

GAME COUNTS IN HARDAP GAME PARK

May 2012

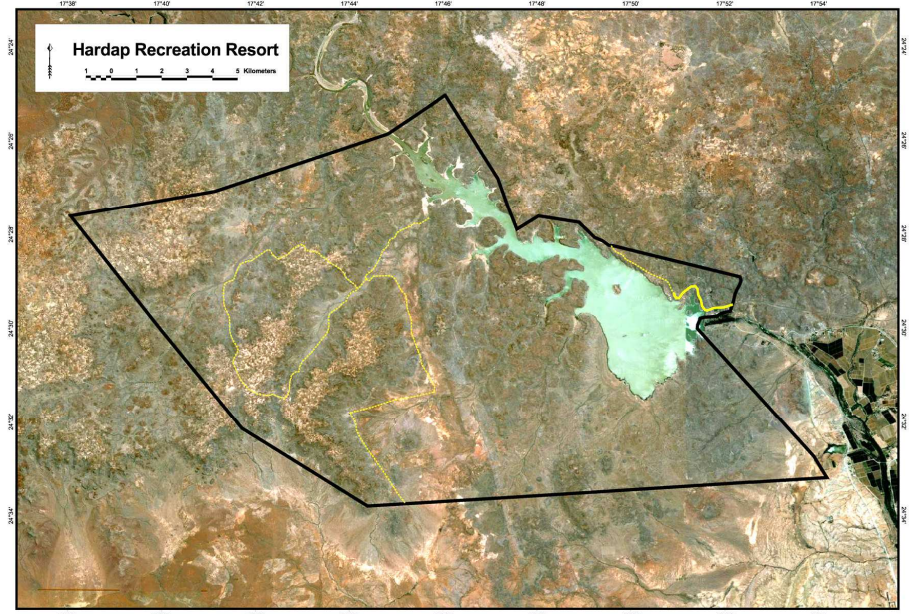
Total Population Estimates

Species	Estimate	Lower 95 % CL	Upper 95% CL
Gemsbok	715	456	1122
Ostrich	154	36	659
Springbok	2660	1912	3702
Kudu	92	46	272
Mountain Zebra	76	24	244

Estimates were calculated using DISTANCE analysis.

Total numbers seen per year

Species	2005	2006	2007	2008	2009	2010	2011	2012
Baboon					16	17		7
Gemsbok	47	129	77	113	237	205	178	225
Jackal	3	6	3	8	7	2	3	11
Klipspringer		2						
Kudu	66	55	34	36	56	18	40	46
Mountain Zebra	6	12	18	16	43	26	108	38
Ostrich	78	160	82	40	48	44	63	51
Rhino	2	3			5	2	1	
Springbok	379	606	322	372	390	581	676	454
Steenbok	16	4	4	4	5	2	4	
Warthog	3	6	9	5	6	4	2	29

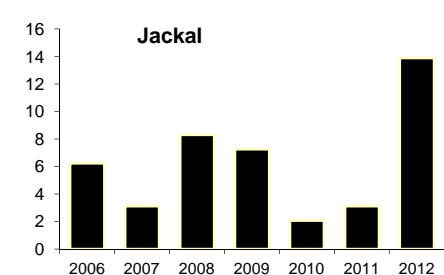
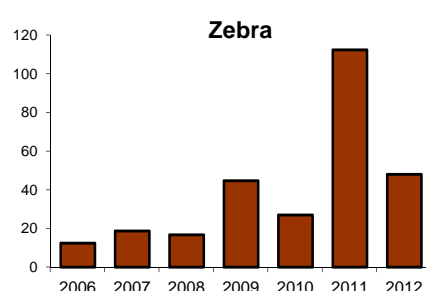
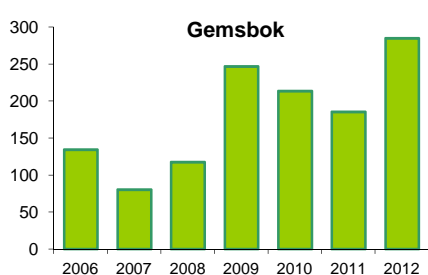
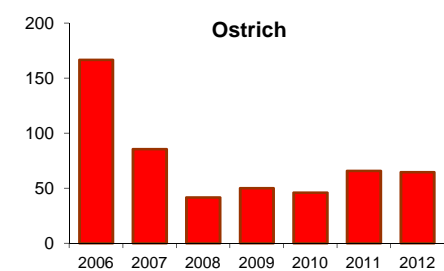
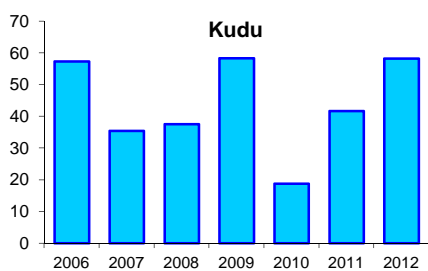
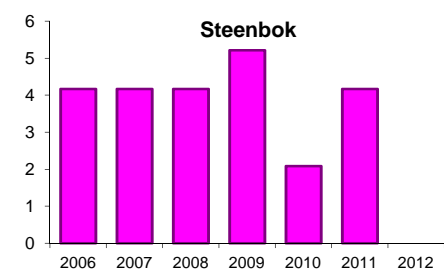
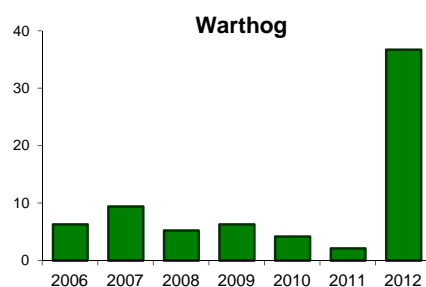
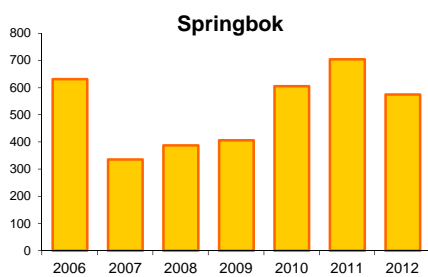


Animals seen during this count:

Total Route km	79
Total area (km ²)	238
Number of routes	2
% area excluded	0

Species	Total	Route 1	Route 2
Baboon	7	7	0
Gemsbok	225	91	134
Jackal	11	11	0
Klipspringer	0	0	0
Kudu	46	29	17
Mountain Zebra	38	5	33
Ostrich	51	15	36
Rhino	0	0	0
Springbok	454	170	284
Steenbok	0	0	0
Warthog	29	14	15

Trends:



Y-axis = Number of animals per 100km