

GAME COUNTS IN HARDAP GAME PARK

MAY 2010

Total Population Estimates

Species	Minimum pop estimate	Likely pop estimate (ESW)
Gemsbok	540	756
Kudu	49	128
Ostrich	115	127
Springbok	1,453	2,325
Steenbok	5	50
Mountain Zebra	62	122

The minimum estimate assumes all animals along a 1km wide transect are seen; the likely estimate corrects for detection using Effective Strip Width (ESW). These are conservative estimates for springbok and gemsbok as large groups have been excluded from extrapolations. All estimates are rough approximations and great care should be taken when using these data.

Animals seen during this count:

Total Route km	96
Total area (km ²)	243
Number of routes	2
% area excluded	2

Species	Route 1	Route 2
Baboon		17
Gemsbok	153	52
Jackal		2
Kudu	17	1
Ostrich	32	12
Rhino	2	
Springbok	275	306
Steenbok	1	1
Warthog		4
Mountain Zebra	6	20

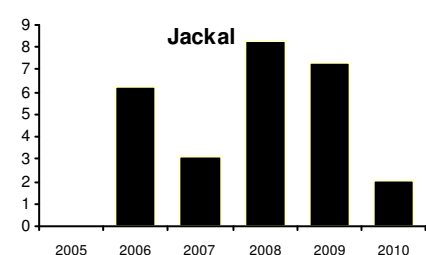
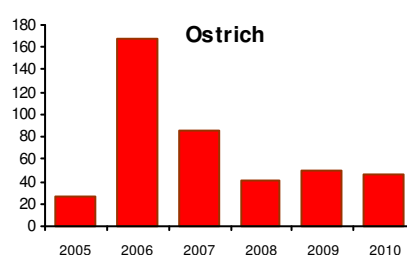
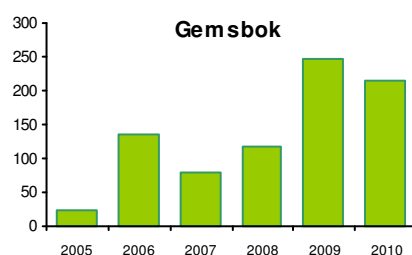
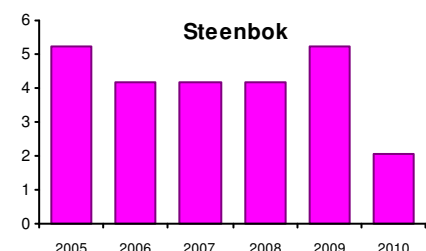
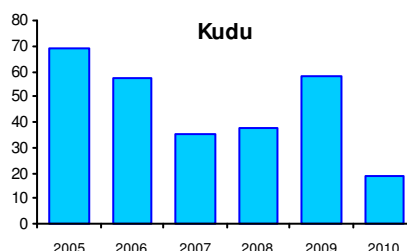
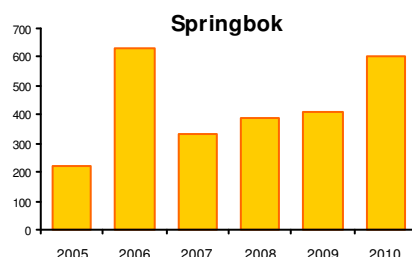
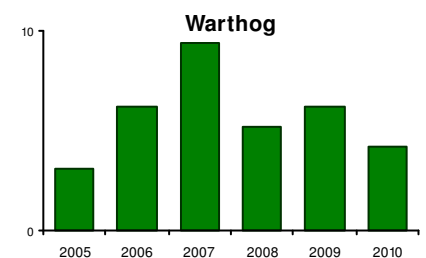
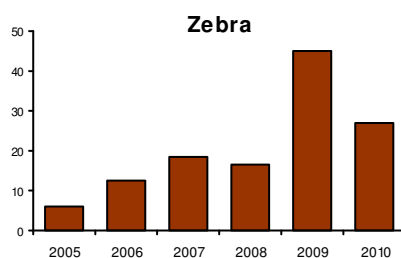
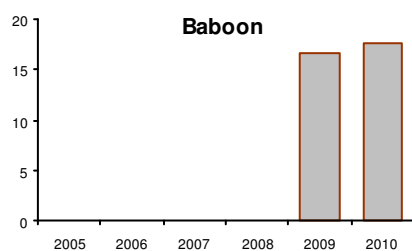


Total numbers seen per year

Species	2005	2006	2007	2008	2009	2010
Baboon					16	17
Gemsbok	47	129	77	113	237	205
Jackal	3	6	3	8	7	2
Klipspringer		2				
Kudu	66	55	34	36	56	18
Ostrich	78	160	82	40	48	44
Rhino	2	3			5	2
Springbok	379	606	322	372	390	581
Steenbok	16	4	4	4	5	2
Warthog	3	6	9	5	6	4
Mountain Zebra	6	12	18	16	43	26



Trends:



Y-axis = Number of animals per 100km