

# Gondwana Kalahari Park

## Game Count 2009



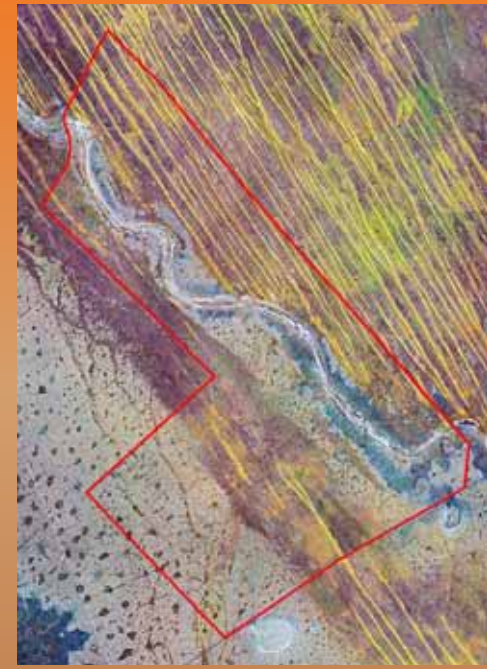
### OBJECTIVES OF COUNTING

Objective	Reasons why information is needed
1. Estimate the <b>Numbers</b> of game  <b>How many?</b>	For: <ul style="list-style-type: none"> <li>estimating biomass to manage the veld conditions and inter-specific competition</li> <li>setting reasonable off-take quotas</li> <li>determining the value of the Park's wildlife</li> <li>providing information to visitors.</li> </ul>
2. Produce wildlife <b>Distribution</b> maps  <b>Where are they?</b>	For: <ul style="list-style-type: none"> <li>land-use planning and zonation;</li> <li>monitoring veld condition in areas of high game concentrations;</li> <li>tracking distribution changes in response to rainfall or human factors such as water distribution, removal of fences etc.</li> </ul>
3. Monitor <b>Population Changes</b>  <b>Is wildlife increasing or decreasing?</b>	For: <ul style="list-style-type: none"> <li>monitoring changes per species;</li> <li>To assist management to achieve its objectives for wildlife management, biodiversity conservation and the protection of rare /vulnerable species.</li> </ul>

### ROUTE & SPECIES PARAMETERS

Route Parameters	ROUTES					Totals
	1	2	3	4	5	
Route Length (km)	19	25.4	30	33	13	120.4
Correction Factor	1.1	1.5	1.0	1.1	1.0	

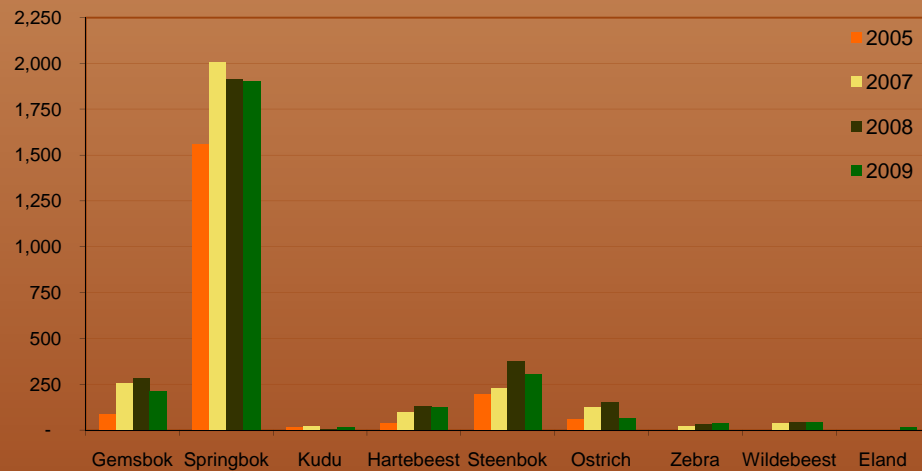
SPECIES	SPECIES CORRECTION FACTORS
Gemsbok	1.2
Springbok	1.6
Kudu	1.2
Red Hartebeest	1.2
Steenbok	10.0
Ostrich	1.2
Zebra	1.2
Wildebeest	1.2
Duiker	4.0



### WILDLIFE POPULATION ESTIMATES

	2005	2007	2008	2009
Gemsbok	88	257	282	124
Springbok	1558	2008	1917	1905
Kudu	13	21	4	16
Red Hartebeest	36	96	132	125
Steenbok	199	226	377	307
Ostrich	61	127	149	68
Zebra (known)		23	30	40
Wildebeest (known)		40	41	44
Eland (known)				16
<b>Total</b>	<b>1955</b>	<b>2799</b>	<b>2933</b>	<b>2718</b>

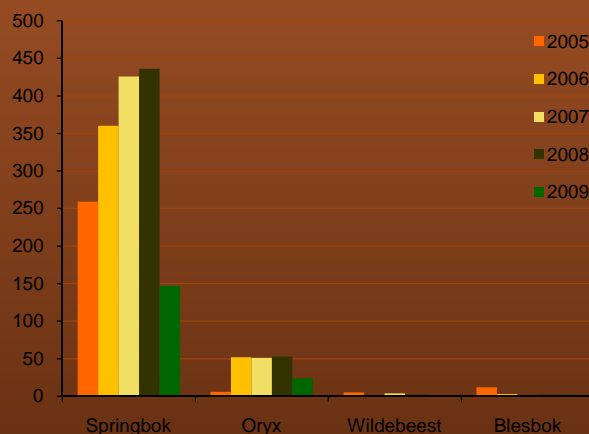
### CHANGES IN POPULATION NUMBERS 2005-2009



### TOTAL ESTIMATED WILDLIFE BIOMASS

Year:	2005	2007	2008	2009	TARGET RANGE
Biomass (kg/ha):	9.8	18.7	20.0	16.3	7 – 23 kg/ha

### Off-takes



Thank You to Everyone!

For more information contact:  
**Rachel & Danie Brand**  
 Park Wardens, Gondwana Cañon Park  
 E-mail: park@gondwana-canyon-park.com