



# Natural Resource Report continued...

## monitoring numbers and trends for a healthy conservancy...

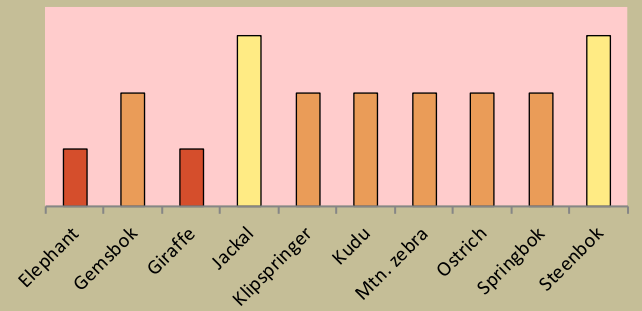
### Current wildlife numbers and status

Species	Animals Seen 2019	Estimated population range	Wildlife Status		
			Count Trend	National Guideline	Desired Status
Elephant					
Gemsbok	3	11 - 30			
Giraffe					
Jackal					
Klipspringer					
Kudu					
Mtn. zebra					
Ostrich					
Springbok	141	540 - 990			
Steenbok	1	5 - 30			

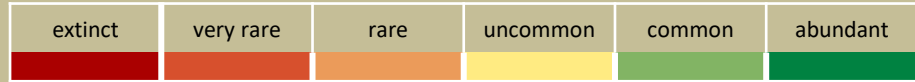
**Desired Number** – gives the species status in the conservancy based on what the conservancy would like to have.

**dark green** (abundant) – reduce a lot;  
**light green** (common) – reduce a little;  
**yellow** (uncommon) – keep numbers the same;  
**light orange** (rare) – double numbers;  
**dark orange** (very rare) – more than double numbers.

#### Wildlife status summary in 2019

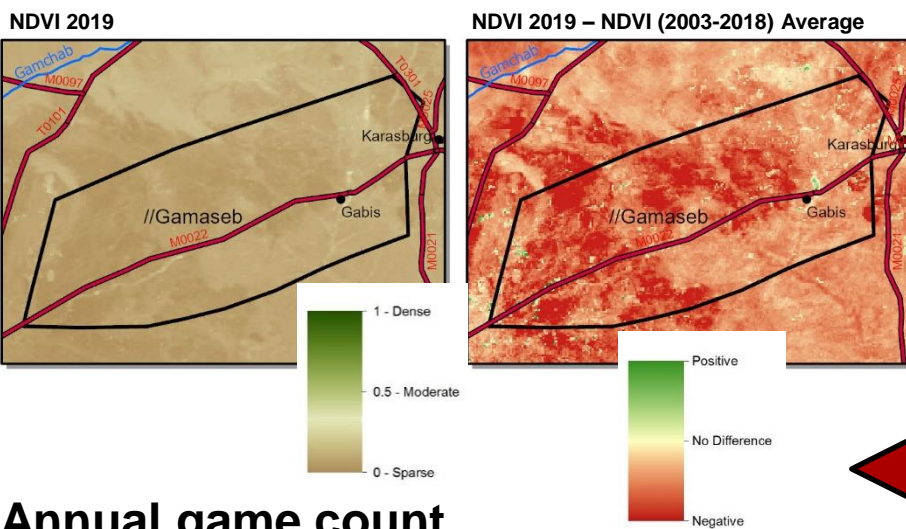


#### Key to wildlife status

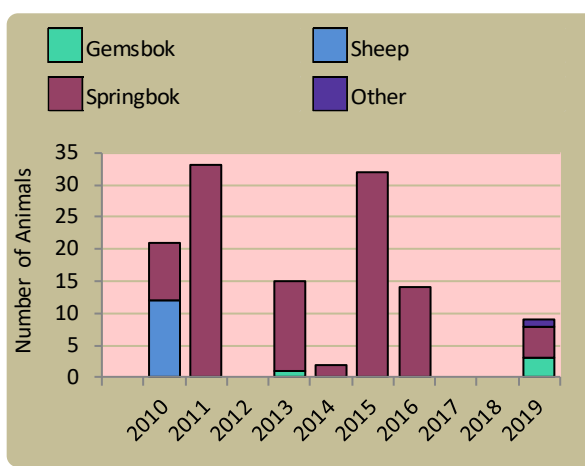


### Vegetation monitoring

Green vegetation index (NDVI). Maps show vegetation cover during Feb-Apr of the current year and the difference between the current year and the long-term average (2003-2018)



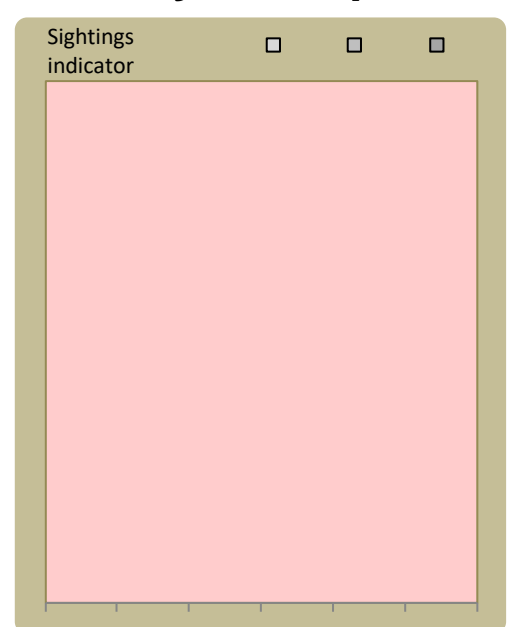
### Wildlife mortalities



#### Flags



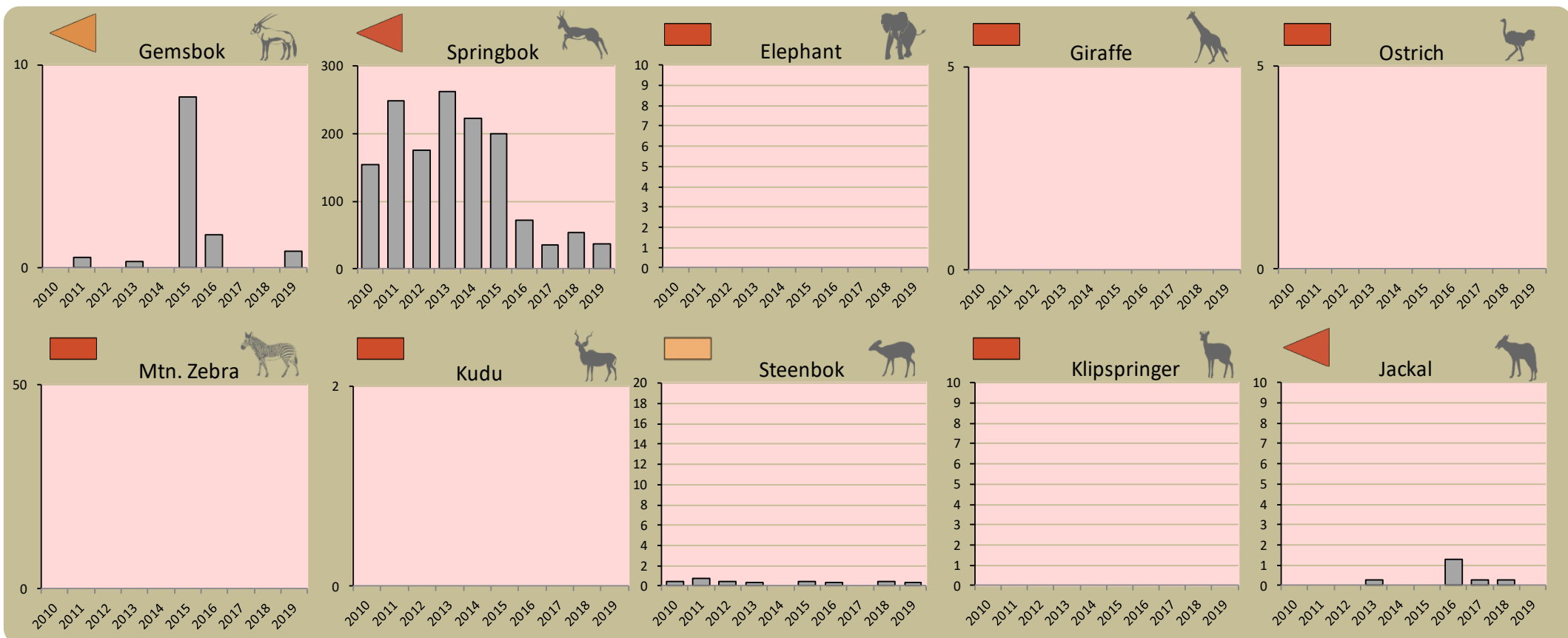
### Locally rare species



**Locally rare species** are not found very often in the conservancy and need special conservation attention.

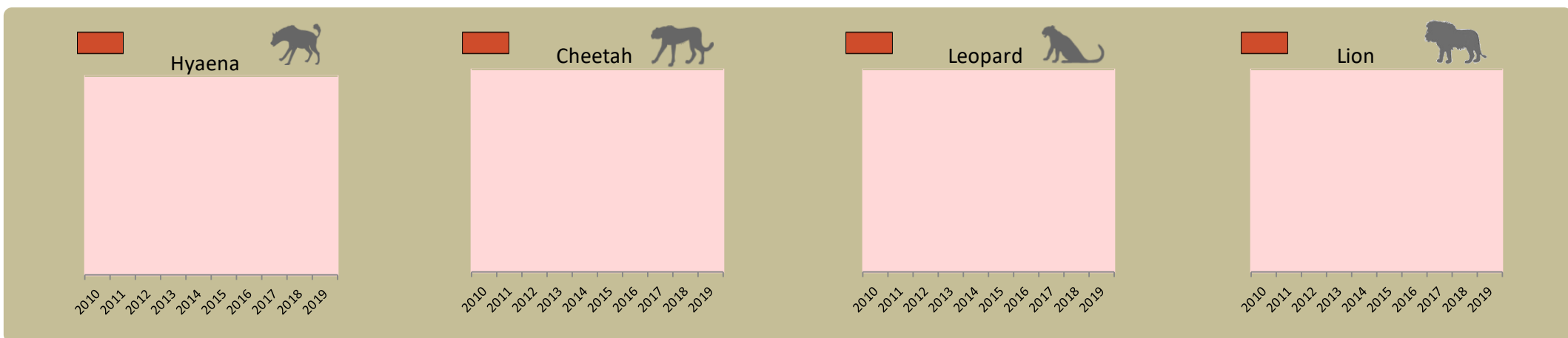
### Annual game count

Charts show the number of animals seen each year per 100 km driven during the game count. As a point of reference the dashed horizontal line represents the combined 10 year average in Palmwag and Etendeka concessions. Status flags reflect the general count trend over the last 5 years.



### Predator monitoring

charts show the average number of animals seen per Event Book each year status barometers reflect the general sightings trend over the last 5 years



Wildlife provides a wide range of benefits. Some wildlife can cause conflicts, but all wildlife is of value to tourism, trophy hunting and a healthy environment.

By using all the available information and adapting and improving activities, threats such as human wildlife conflict, poaching and other issues can be minimised.

### Enabling wise conservancy governance...

#### Conservancy Statistics

Date Registered:	July 2003
Population (2011 census):	1600
Size (square kilometres):	1748
Registered members:	168

#### Key Compliance Requirements

Was an AGM held?	×
Were elections held?	N/A
Were benefits distributed according to the BDP?	×
Is game managed according to the GMUP?	×
Was the financial report presented and approved?	×

#### Conservancy Governance

	Male	Female	Total
Number of management committee members	6	3	9
Attendance at AGM			
Date of the last AGM:			
Date of the next AGM:	15/02/2020		
Other important issues			
Budget approved?			
Work plan approved?	×		
Annual conservancy report approved?			

#### Benefit Distribution

Type	Description	Beneficiary	Number
Meat Distribution	Meat Distributed Only To Conservancy	People	4
	Traditional Authority Funeral	Households	1

#### Employment

	Male	Female	Total
Conservancy staff (Incl. CGG & CRM)	3	1	4
Number of Community Game Guards	3	1	4
Number of Community Resource Monitors			

#### Governance Performance Rating How well did the conservancy perform in the past year?

Performance Category	This Year	Prev. Year	Explanation of performance category
1 Member engagement			The conservancy is adequately engaging its members
2a Benefit planning			The conservancy developed its BDP in a transparent and participatory manner
2b Benefit distribution			The conservancy distributes benefits to its members in a fair, transparent and equitable manner
3 Accountability			Conservancy members are holding the management committee accountable
4 Compliance			The conservancy is compliant with the standard operating procedures (SOPs)
5 Stakeholder engagement			The conservancy maintains relationships with key external stakeholders
6 Financial management			The conservancy is effectively managing its finances

Colour codes:

none

weak

moderate

strong

exceptional

N/A