



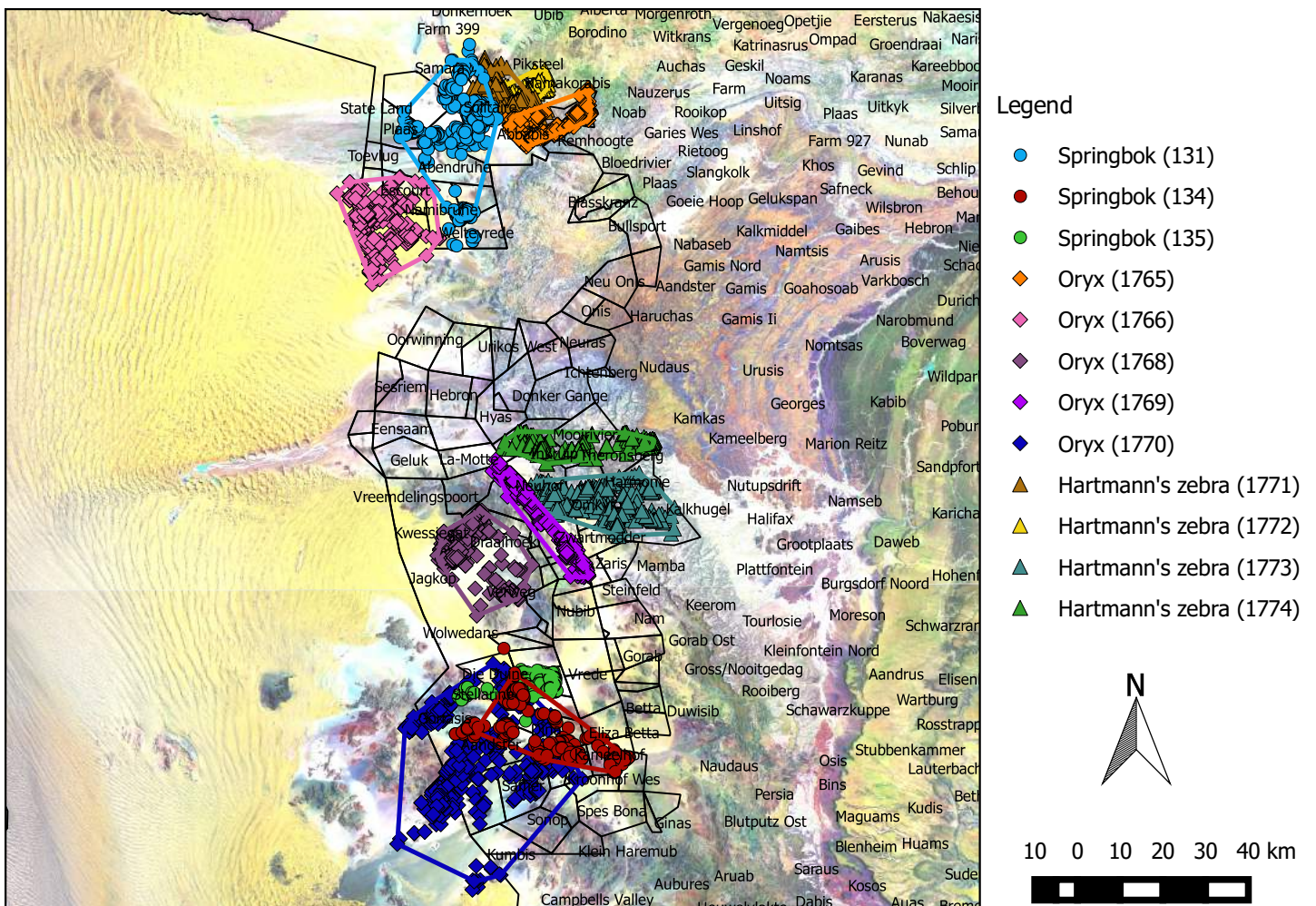
Greater Sossusvlei Namib Landscape: Tracking ungulate movements

11 March - 19 June 2016

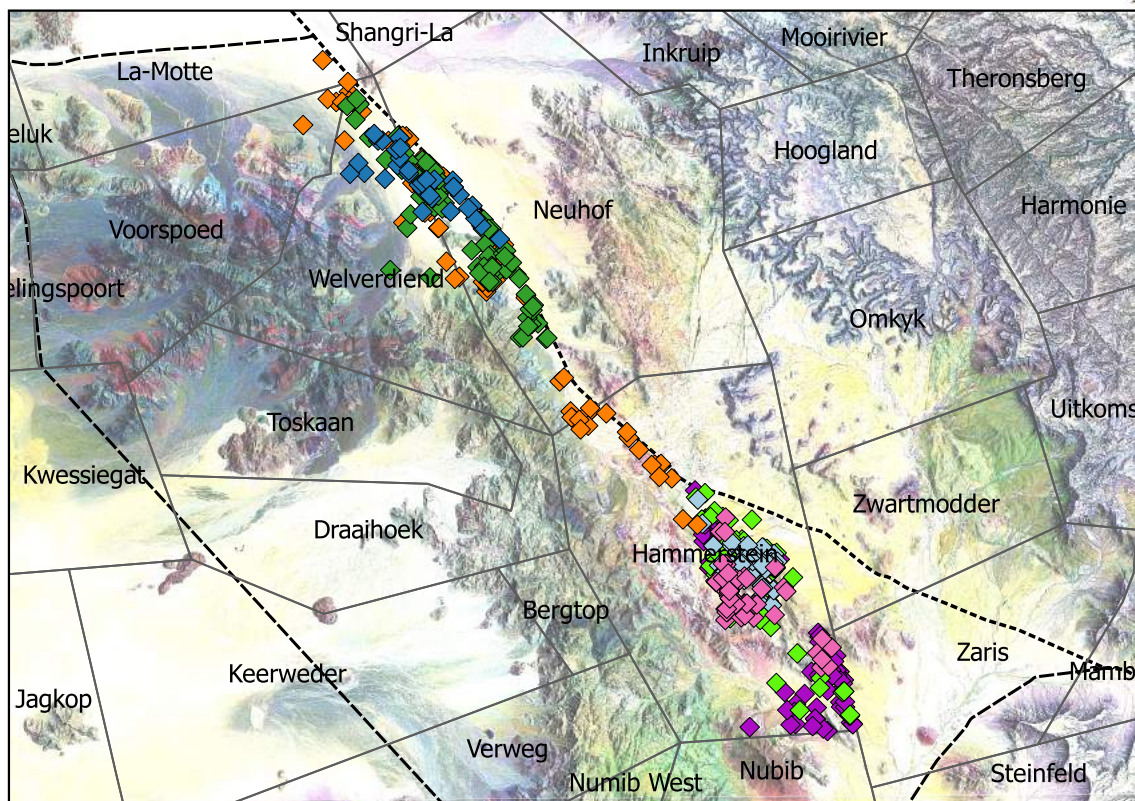
Collar id.	Animal	Collar status	Pings per day	Minimum distance (km)	Mean daily distance (km)	Current location
SAT1771	H. zebra	Active	3	877.36	8.69	Koireb Wes
SAT1772	H. zebra	Active	3	447.33	4.43	Solitaire
SAT1773	H. zebra	Active	3	418.36	4.14	Zwartmodder (Possible mortality)
SAT1774	H. zebra	Active	3	187.48	1.87	Theronsberg
SAT1765	Oryx	Active	3	686.77	6.80	Namakorabis
SAT1766	Oryx	Active	3	427.92	4.24	Namib Naukluft Park
SAT1768	Oryx	Active	3	786.08	7.78	Keerweder
SAT1769	Oryx	Active	3	303.12	3.00	Hammerstein
SAT1770	Oryx	Active	3	921.62	9.12	Namib Naukluft Park
NAN131	Springbok	Active	3	716.12	7.09	Dieprivier
NAN134	Springbok	Active	3	515.89	5.11	Kameelhof
NAN135	Springbok	Active	3	361.68	3.58	Wereldend

Above: Oryx 1770 and Zebra 1771 covered the most distance with 921.62 km and 877.36 km respectively (assuming a straight line between each ping). Mean daily distances have overall increased since the last period, possibly due to isolated rainfall during the period. Zebra 1773 has possibly been killed or the collar fell off, this is currently under investigation. Note: The mean daily distances in the last newsletter were not correct as they were distances between each ping. They should be multiplied by three to get the mean daily distance.

Map of GSNL showing the movements of all collared animals (Points represent 8 hourly positions, polygons represent home ranges)

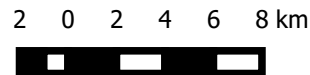


Greater Sossusvlei Namib Landscape: Tracking ungulate movements

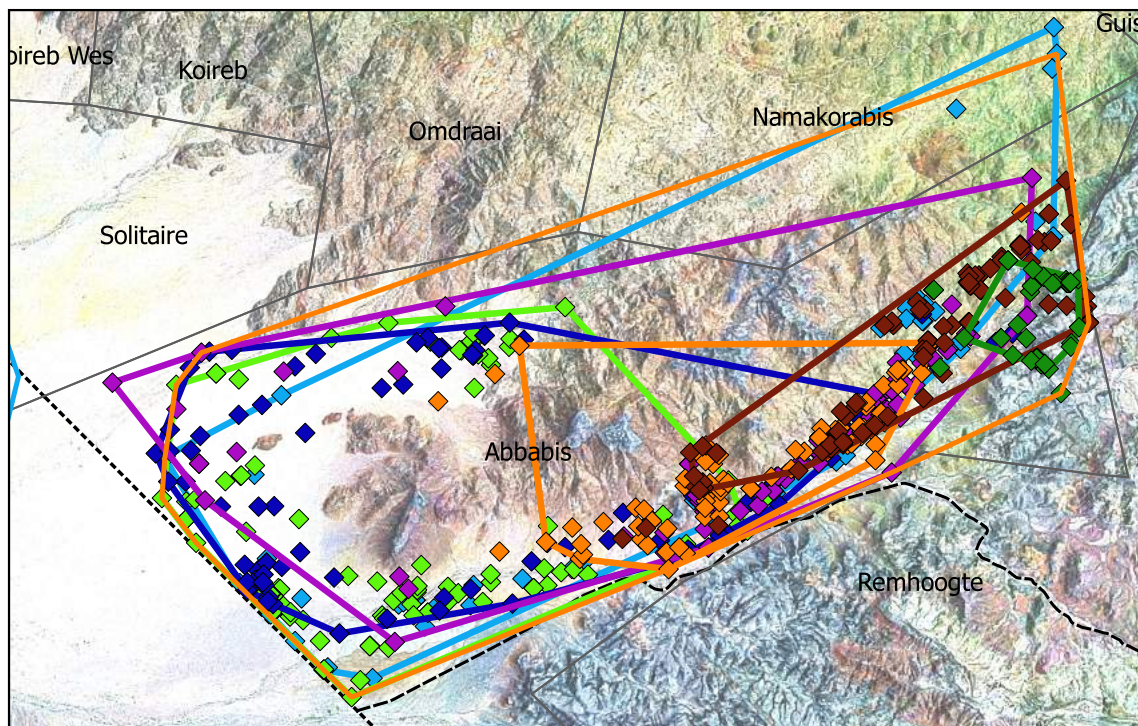


Legend

- ◆ December 2015
- ◆ January 2016
- ◆ February 2016
- ◆ March 2016
- ◆ April 2016
- ◆ May 2016
- ◆ June 2016
- Farm boundaries
- Main road
- - - - District road

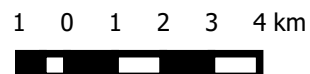


Above: Oryx 1769's movements are still concentrated on the western side of the C19 fence. It moves freely between Wilverdiend, Neuuhof and Hammerstein. It spent some time trying to move southward, but could not cross the Zaris/ Nubib fence line.



Legend

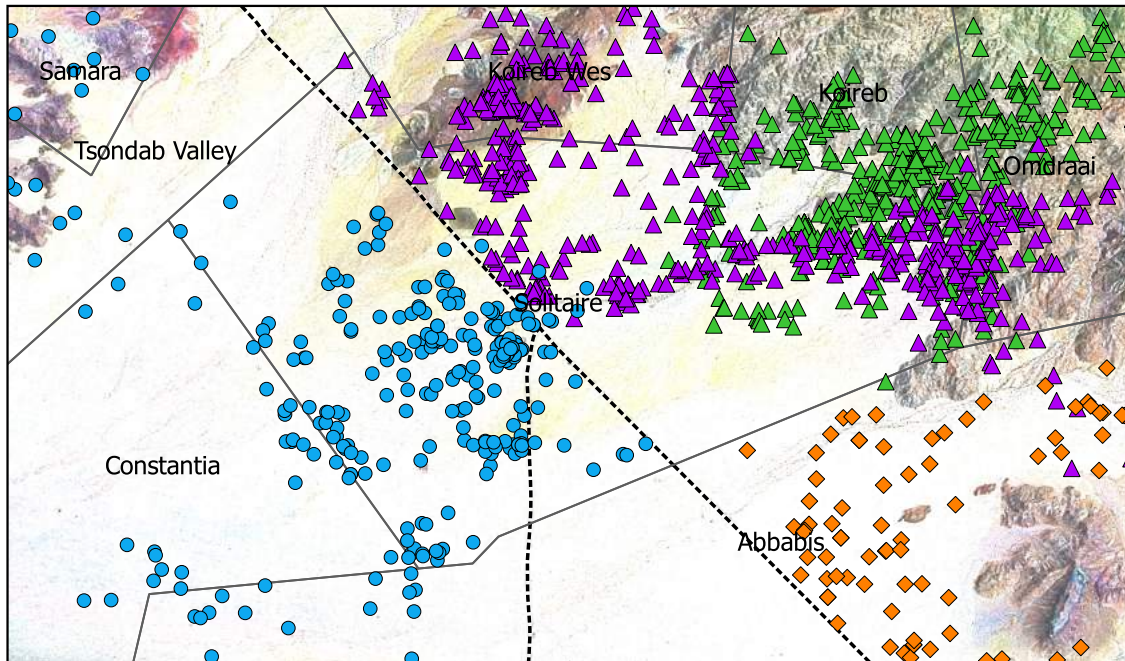
- ◆ December 2015
- ◆ January 2016
- ◆ February 2016
- ◆ March 2016
- ◆ April 2016
- ◆ May 2016
- ◆ June 2016
- Main road
- - - - District road



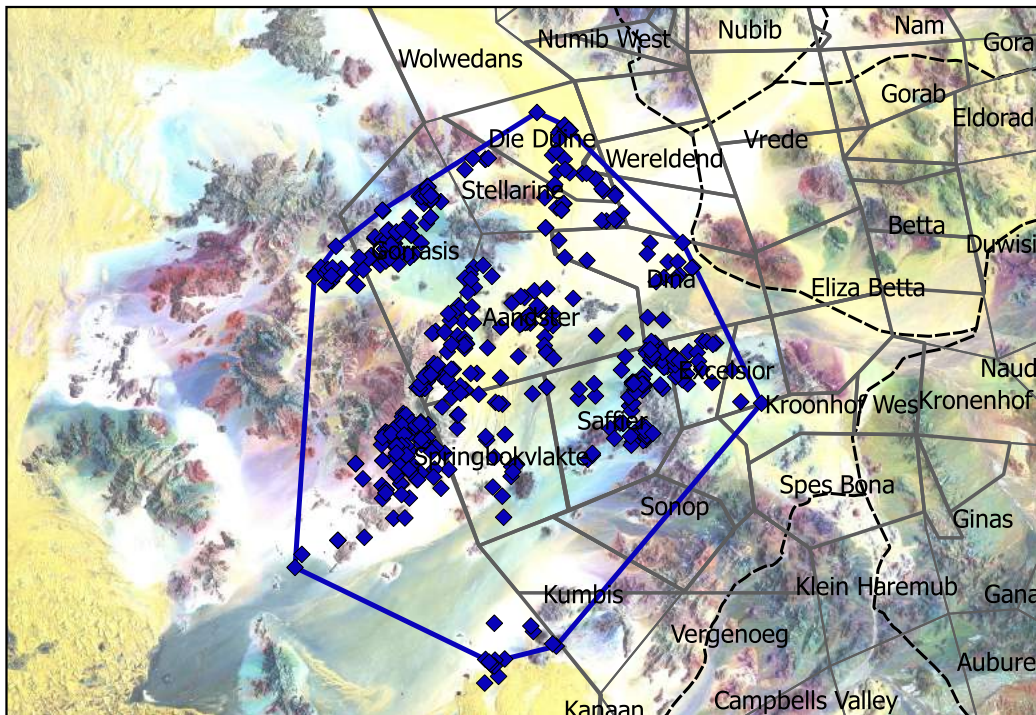
Above: Oryx 1765's movements are restricted to the eastern side of the main road around the mountains on farm Abbabis. Its home range was smallest in December and January with movements concentrated along the southern border of Abbabis. This was possibly due to better food availability but has to be corroborated with rainfall data. In June, it ventured out to Namakorabis, where it is currently located.



Greater Sossusvlei Namib Landscape: Tracking ungulate movements



Above: Springbok 131's is able to move across the main road fence while Hartmann's zebra 1771 and Oryx 1765's movements seem to be restricted to the eastern side of the fence.



Above: Oryx 1770 is the ungulate with the largest home range. Its movements extend into the Namib Naukluft Park.

Feedback and enquiries are welcome:
 Dr. Morgan Hauptfleisch
 081 124 1365
 mhauptfleisch@nust.na

Stefanie Urban
 081 294 4924
 urban.stefanie@yahoo.de