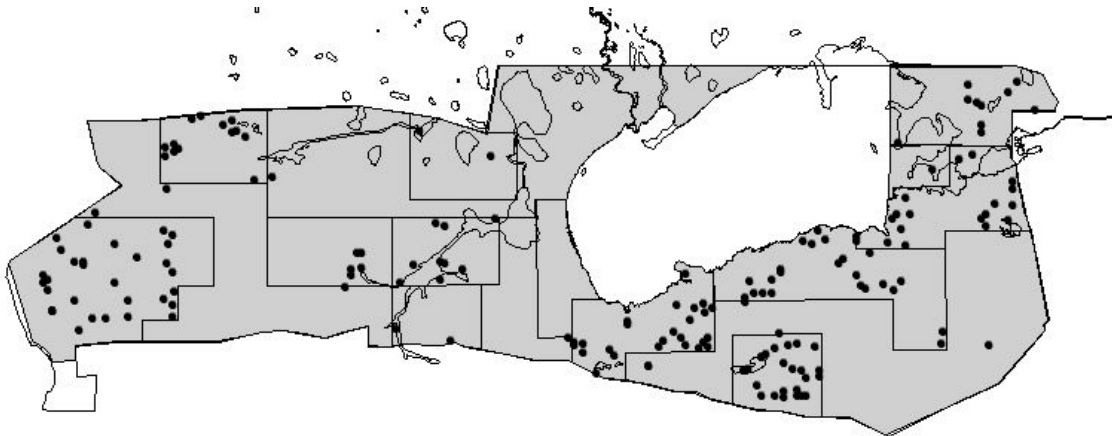


Black rhino estimates and summary data.

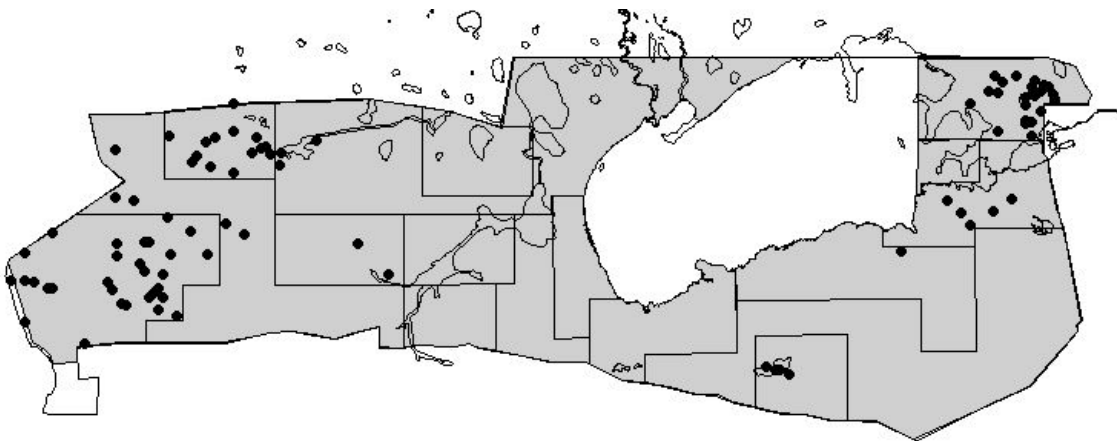
Block	Population estimate	Number seen	Variance	95%ci % estimate	95% range	Density (no/km)
1	119	40	530.4	38.97	73 -166	0.075
2	21	7	42.1	64.94	7-34	0.033
3	18	6	97.9	114.82	6-38	0.026
4	24	9	108.6	89.97	9-46	0.040
5	10	2	39.1	135.53	2-25	0.023
7	80	26	271.9	41.68	47-113	0.061
8	68	23	215.4	44.87	38-99	0.120
9	76	29	154.1	32.68	51-101	0.059
10	64	21	202.9	44.67	36-93	0.060
11	38	13	168.1	68.34	12-65	0.041
12	73	6	1057.2	92.51	6-141	0.032
13	11	1	99.6	185.33	1-31	0.004
14	0	0	0	0	0	0.000
15	21	2	179.5	134.03	2-48	0.007
16	6	1	29.3	200.65	1-18	0.009
Total	629	186	3196.1	19.15	509-749	0.034



Eland estimates and summary data.

Block	Population estimate	Number seen	Variance	95%ci % estimate	95% range	Density (no/km)
1	328	110	9968.8	61.43	127-530	0.207
2	222	75	15268.3	115.42	75-477	0.353
3	0	0	0	0	0	0.000
4	0	0	0	0	0	0.000
5	0	0	0	0	0	0.000
7	0	0	0	0	0	0.000
8	27	9	286.7	132.29	9-62	0.047
9	8	3	36.6	153.9	3-20	0.006
10	104	34	5177.3	139.36	34-250	0.098
11	416	141	14074.1	57.66	176-656	0.454
12	452	37	44772.8	97.62	37-894	0.199
13	110	10	5503.1	137.78	10-262	0.036
14	0	0	0	0	0	0.000
15	0	0	0	0	0	0.000
16	0	0	0	0	0	0.000
Total	1667	419	95087.7	39.42	1010 - 2324	0.090

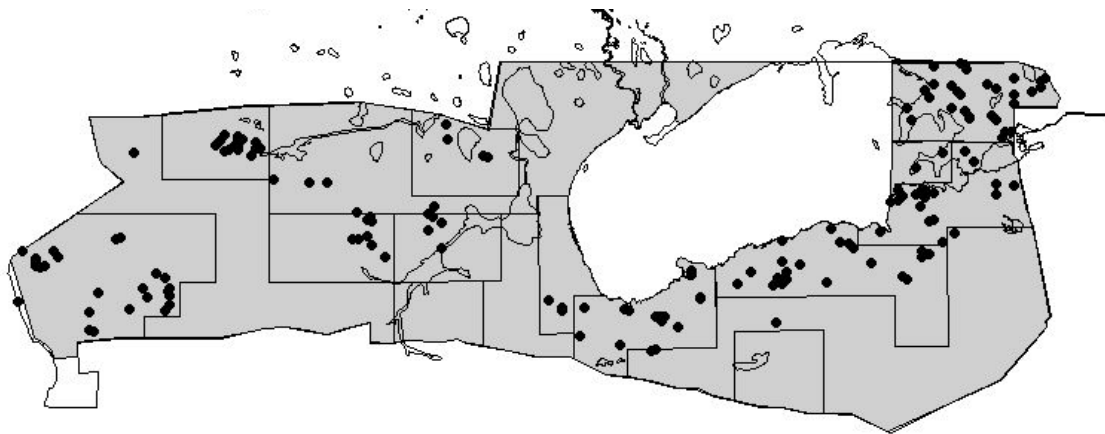
Eland sightings



Elephant estimates and summary data.

Block	Population estimate	Number seen	Variance	95%ci % estimate	95% range	Density (no/km)
1	448	150	20887.6	65.21	156-740	0.282
2	44	15	419.2	95.63	15-87	0.070
3	50	17	648.2	104.23	17-102	0.071
4	112	42	3487.8	109.25	42-234	0.186
5	0	0	0	0	0	0.000
7	320	104	14011.6	74.81	104-559	0.245
8	0	0	0	0	0	0.000
9	346	132	8188	52.34	165-527	0.268
10	190	62	2902.8	57.23	81-299	0.179
11	333	113	7418	52.24	159-507	0.364
12	0	0	0	0	0	0.000
13	308	28	21779.8	97.90	28-610	0.102
14	0	0	0	0	0	0.000
15	248	24	26497.9	135.70	24-585	0.087
16	18	3	268	202.11	3-54	0.027
Total	2417	690	106508.9	26.2	1896-2938	0.131

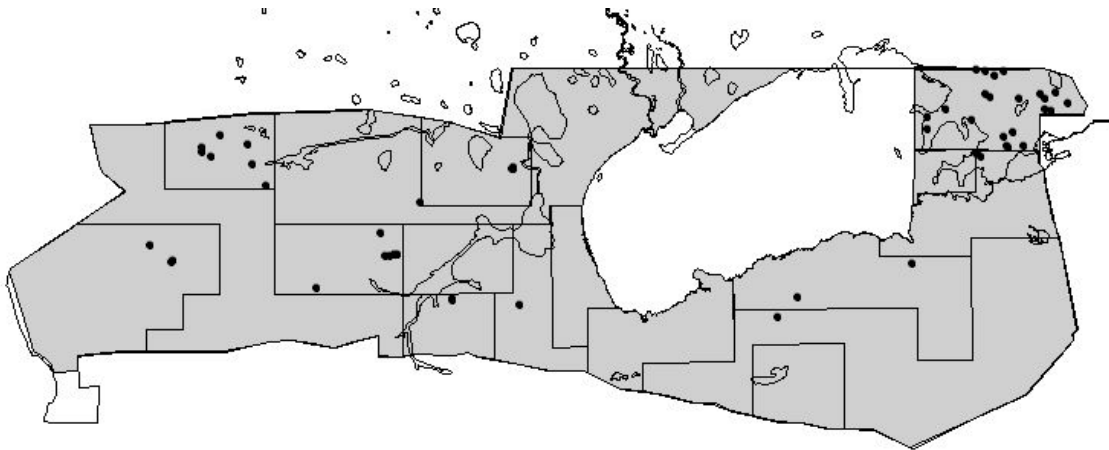
Elephant sightings, ENP 2002



Elephant carcasses estimates and summary data.

Block	Population estimate	Number seen	Variance	95%ci % estimate	95% range	Density (no/km)
1	6	2	9.6	104.99	2-120	0.004
2	18	6	39.1	73.01	6-31	0.029
3	12	4	20.1	78.00	4-21	0.017
4	0	0	0	0	0	0.000
5	5	1	20.0	193.67	1-15	0.011
7	0	0	0	0	0	0.000
8	0	0	0	0	0	0.000
9	0	0	0	0	0	0.000
10	3	1	5.9	159.28	3-8	0.003
11	41	14	99.3	99.3	21-61	0.045
12	0	0	0	0	0	0.000
13	0	0	0	0	0	0.000
14	0	0	0	0	0	0.000
15	31	3	275.8	110.74	3-65	0.011
16	6	1	30.6	204.90	1-18	0.009
Total	122	32	500.4	39.07	74-170	0.007

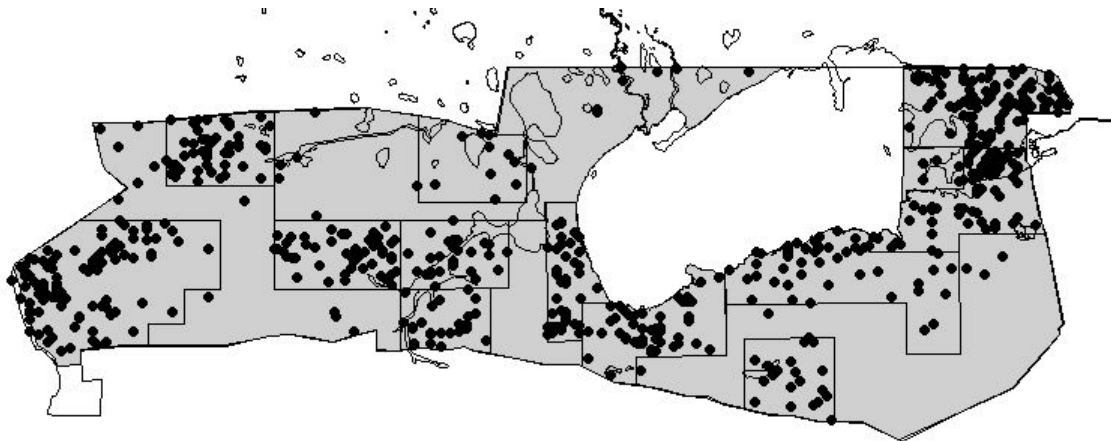
Elephant carcasses sightings



Gembok estimates and summary data.

Block	Population estimate	Number seen	Variance	95%ci % estimate	95% range	Density (no/km)
1	744	249	22227.3	40.52	442-1045	0.469
2	461	156	18882.1	61.71	176-745	0.733
3	333	113	4678.6	42.15	193-473	0.473
4	168	63	3080.7	68.45	63-283	0.279
5	402	77	9178.2	53.9	185-619	0.910
7	1076	350	61257.8	46.48	576-1576	0.823
8	161	54	1048.7	42.17	93-229	0.283
9	445	170	10592.9	46.22	239-651	0.344
10	902	294	128324.6	40.52	294-1626	0.849
11	985	334	29380.5	35.17	639-1331	1.075
12	415	34	20542.8	71.96	116-714	0.183
13	297	27	10032.9	68.9	92-502	0.099
14	90	8	4959.5	216.21	8-286	0.166
15	83	8	2684.4	129.57	8-190	0.029
16	71	12	585.8	74.71	18-125	0.107
Total	6633	1949	327456.8	18.38	5414-7820	0.359

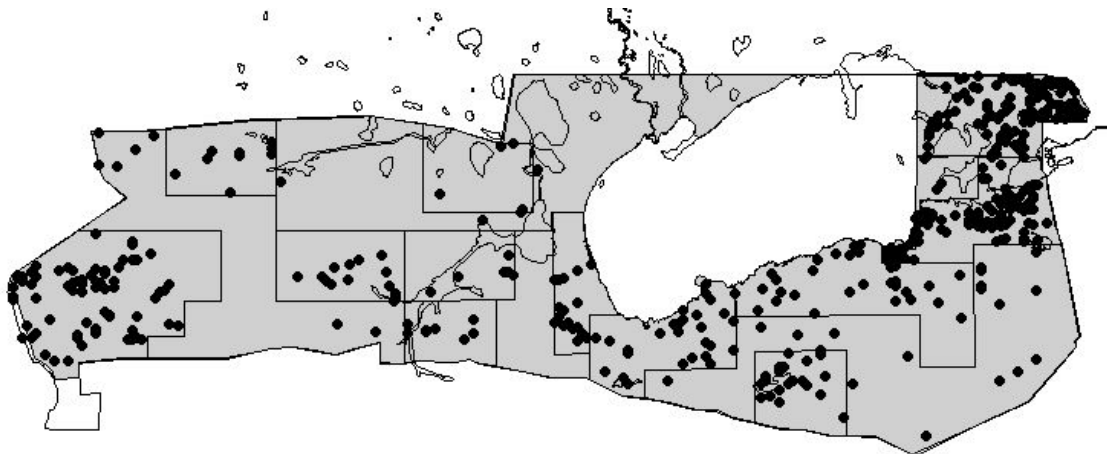
Gembok sightings, ENP 2002



Giraffe estimates and summary data.

Block	Population estimate	Number seen	Variance	95%ci % estimate	95% range	Density (no/km)
1	370	124	1955.8	24.14	281-460	0.233
2	56	19	984	115.65	19-121	0.089
3	62	21	241.6	51.53	30-94	0.088
4	16	6	48.6	90.25	6-30	0.027
5	141	27	3052.4	88.65	27-266	0.319
7	261	85	1911.7	33.81	173-350	0.200
8	101	34	681.3	53.99	47-156	0.178
9	183	70	2217.9	51.36	89-278	0.142
10	598	195	4361.2	22.3	465-732	0.563
11	690	234	8668.8	27.27	502-878	0.753
12	257	21	6729.8	66.69	85-428	0.113
13	99	9	2220.5	97.25	9-195	0.033
14	0	0	0	0	0	0.000
15	176	17	3532	69.94	53-299	0.062
16	53	9	0	122.57	9-119	0.080
Total	3063	871	36605.6	13.31	2655-3398	0.166

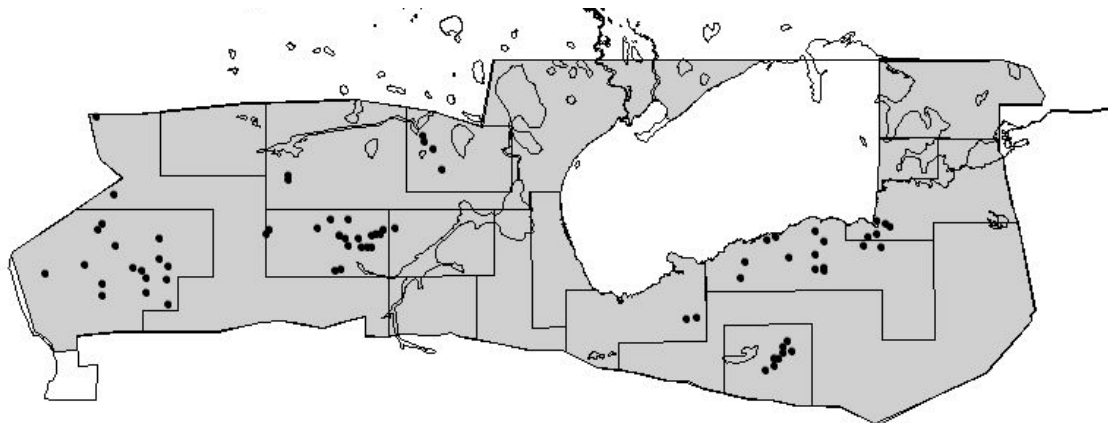
Giraffe sightings, ENP 2002



Hartebeest estimates and summary data.

Block	Population estimate	Number seen	Variance	95%ci % estimate	95% range	Density (no/km)
1	188	63	4030.4	68.2	60-316	0.119
2	0	0	0	0	0	0.000
3	383	130	24273.1	83.45	130-703	0.544
4	0	0	0	0	0	0.000
5	0	0	0	0	0	0.000
7	65	21	1462.2	119.68	21-142	0.050
8	51	17	642.7	104.87	17-104	0.090
9	223	85	5116.9	64.25	85-366	0.172
10	95	31	1838.3	91.08	31-182	0.089
11	0	0	0	0	0	0.000
12	171	14	5286.8	88.66	19-323	0.075
13	132	12	14377.6	185.33	12-377	0.044
14	0	0	0	0	0	0.000
15	0	0	0	0	0	0.000
16	160	27	12916.3	155.92	27-411	0.241
Total	1468	400	69944.3	38.39	904-2032	0.079

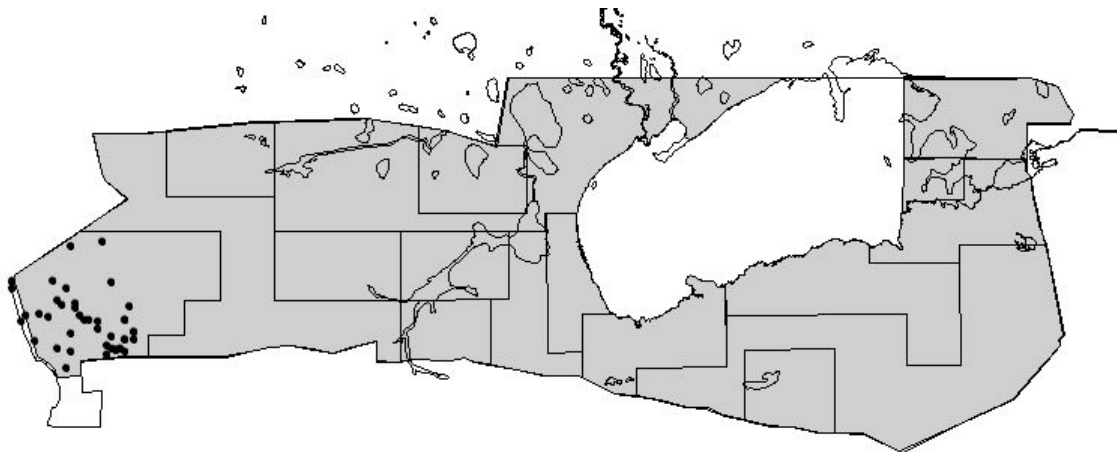
Hartebeest sightings, ENP 2002



Hartmann zebra estimates and summary data, ENP 2002

Block	Population estimate	Number seen	Variance	95%ci % estimate	95% range	Density (no/km ²)
1	693	232	15366.8	36.16	442-943	0.436
2	0	0	0	0	0	0.000
3	0	0	0	0	0	0.000
4	0	0	0	0	0	0.000
5	0	0	0	0	0	0.000
7	0	0	0	0	0	0.000
8	0	0	0	0	0	0.000
9	0	0	0	0	0	0.000
10	0	0	0	0	0	0.000
11	0	0	0	0	0	0.000
12	0	0	0	0	0	0.000
13	0	0	0	0	0	0.000
14	0	0	0	0	0	0.000
15	0	0	0	0	0	0.000
16	0	0	0	0	0	0.000
Total	693	232	15366.8	36.16	442-943	0.038

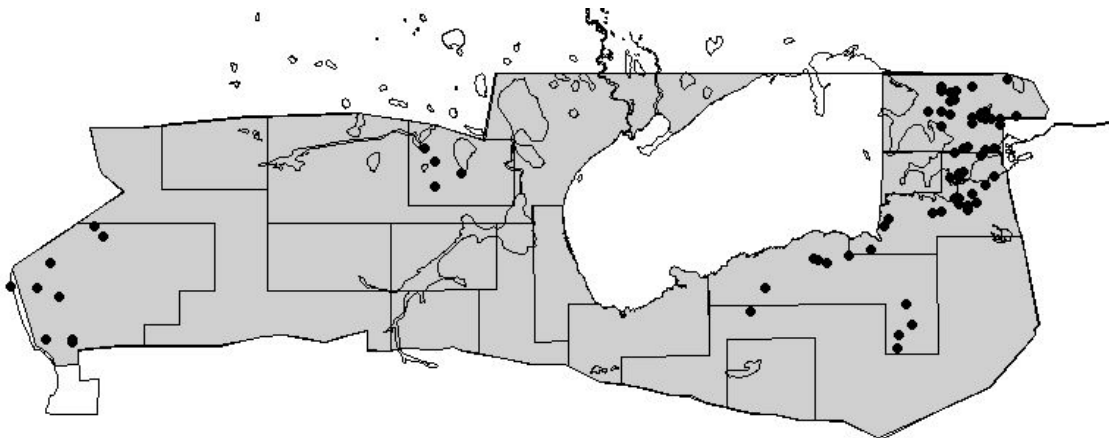
Hartmann zebra sightings, ENP 2002



Kudu estimates and summary data.

Block	Population estimate	Number seen	Variance	95%ci % estimate	95% range	Density (no/km)
1	119	40	1585.4	67.37	40-200	0.075
2	0	0	0	0	0	0.000
3	0	0	0	0	0	0.000
4	0	0	0	0	0	0.000
5	0	0	0	0	0	0.000
7	65	21	239.7	48.45	33-96	0.050
8	86	29	804.9	68.79	29-146	0.151
9	168	64	5620.5	89.43	64-318	0.130
10	196	64	1655.2	41.86	114-279	0.184
11	289	98	5869.7	53.58	134-444	0.316
12	0	0	0	0	0	0.000
13	0	0	0	0	0	0.000
14	0	0	0	0	0	0.000
15	31	3	902.3	200.32	3-93	0.011
16	18	3	71.2	104.19	3-36	0.027
Total	972	322	16749	28.37	696-1248	0.053

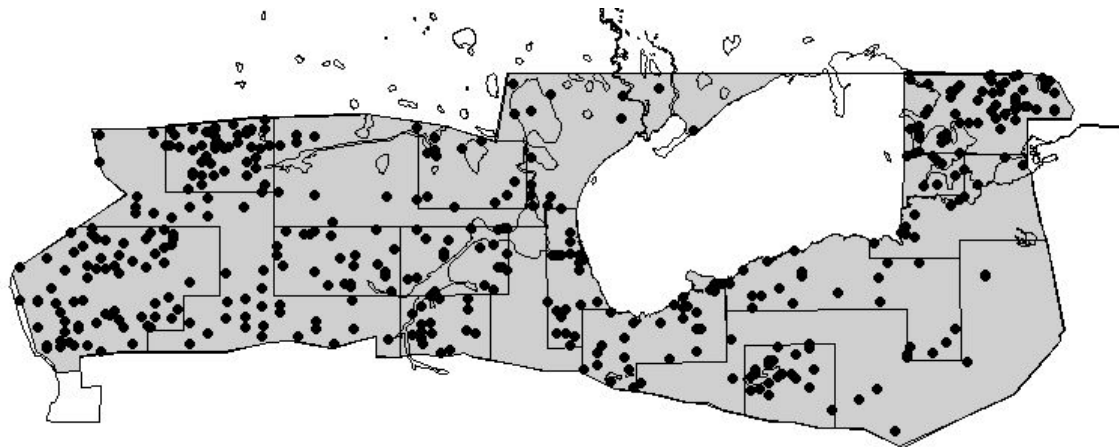
Kudu sightings, ENP 2002



Ostrich estimates and summary data.

Block	Population estimate	Number seen	Variance	95%ci % estimate	95% range	Density (no/km)
1	260	87	1237.4	27.36	189-331	0.164
2	145	49	448.1	30.26	101-189	0.231
3	85	29	614.7	59.53	35-136	0.121
4	101	38	1360.8	75.42	38-178	0.167
5	136	26	2073.9	75.83	33-239	0.308
7	341	111	5351.3	43.32	193-489	0.261
8	101	34	681.3	53.99	47-156	0.178
9	626	239	173012.4	132.87	239-1458	0.484
10	169	55	2598.6	61.04	66-272	0.159
11	233	79	33997.8	50.57	115-351	0.254
12	550	45	10853.6	39.52	333-767	0.242
13	253	23	3881.6	50.31	126-381	0.084
14	66	7	2547.5	211.33	7-206	0.122
15	103	10	976	62.5	39-166	0.036
16	77	13	693.5	75.03	19-135	0.116
Total	3246	845	240328.5	32.18	2201-4291	0.176

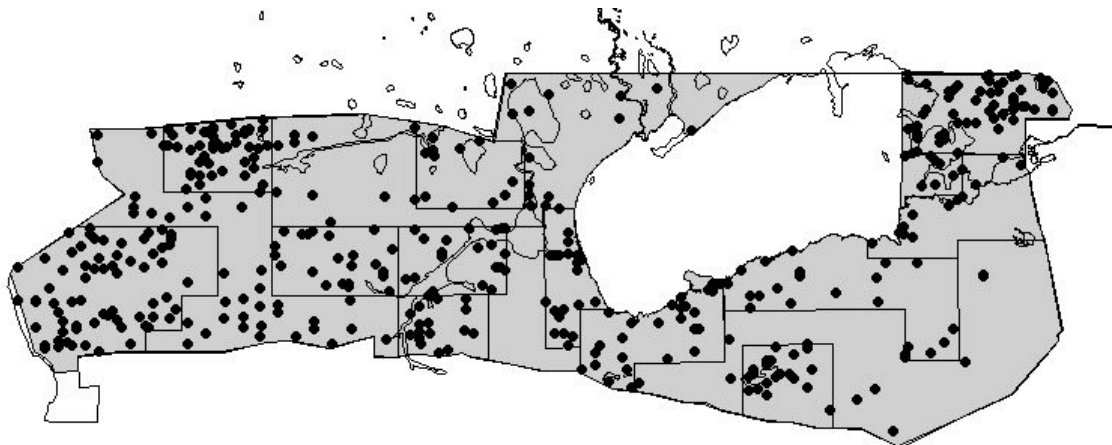
Ostrich sightings, ENP 2002



Plains zebra estimates and summary data.

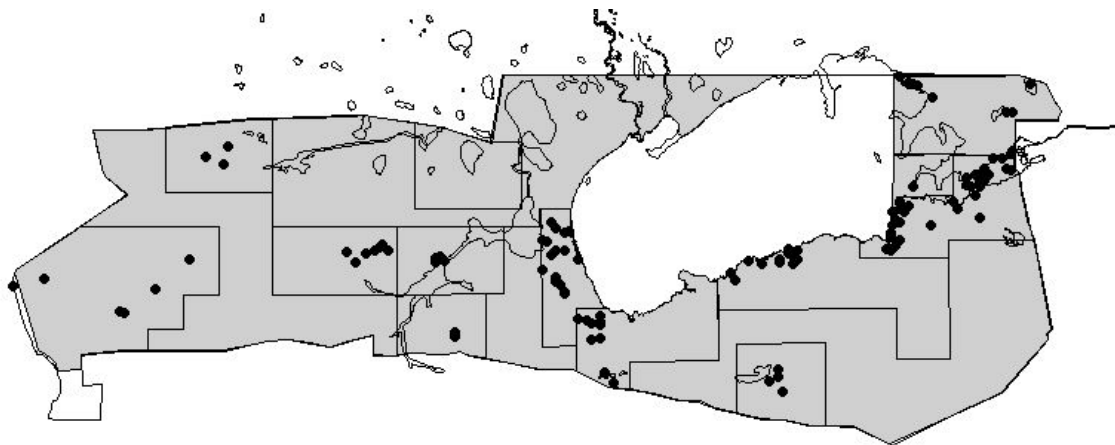
Block	Population estimate	Number seen	Variance	95%ci % estimate	95% range	Density (no/km)
1	2329	780	183136.6	37.13	1464-3194	1.468
2	168	57	5311.2	89.57	57-319	0.267
3	150	51	3550.1	81.35	51-273	0.213
4	290	109	8033.6	63.89	109-476	0.481
5	251	48	15847.7	113.62	48-535	0.568
7	5319	1730	1414171	45.18	2916-7723	4.070
8	1664	559	262916.3	64.5	591-2737	2.924
9	2182	833	124522.8	32.34	1476-2888	1.688
10	3238	1055	322556.6	35.45	2090-4386	3.046
11	1908	647	125710.6	37.56	1191-2624	2.083
12	0	0	0	0	0	0.000
13	308	28	78021.9	185.29	28-880	0.102
14	0	0	0	0	0	0.000
15	93	9	8154.6	200.74	9-280	0.033
16	6	1	29.3	200.65	1-18	0.009
Total	17906	5907	2551962	19.01	14502-21310	0.970

Plains zebra sightings, ENP 2002



Wildebeest estimates and summary data.

Block	Population estimate	Number seen	Variance	95%ci % estimate	95% range	Density (no/km)
1	221	74	9651.1	89.85	74-420	0.139
2	127	43	6778.1	134.13	43-297	0.202
3	286	97	13792.1	84.3	97-527	0.406
4	146	55	6508.2	113.97	55-313	0.242
5	31	6	791.6	203.15	6-95	0.070
7	1039	338	111259.4	64.86	365-1713	0.795
8	149	50	4812.4	97.56	50-294	0.262
9	178	68	5654.5	84.43	68-329	0.138
10	1703	555	168516.3	48.71	874-2533	1.602
11	666	226	198840.3	135.22	226-1588	0.727
12	73	12	1057.2	92.51	12-141	0.032
13	11	1	99.6	185.33	1-31	0.004
14	0	0	0	0	0	0.000
15	21	2	179.5	134.03	2-48	0.007
16	6	1	29.3	200.65	1-18	0.009
Total	4657	1528	527969.6	33.25	3383-5931	0.252



Springbok estimates and summary data.

Block	Population estimate	Number seen	Variance	95%ci % estimate	95% range	Density (no/km)
1	2520	844	193682.2	35.29	1631-3410	1.589
2	493	167	26686.9	68.53	167-831	0.784
3	513	174	43871.7	83.82	174-943	0.729
4	325	122	21334.7	93.02	122-627	0.539
5	585	112	70950.2	103.03	112-1187	1.324
7	5046	1641	490539.8	28.05	3630-6461	3.861
8	152	51	1899.6	60.09	61-243	0.267
9	4409	1683	1359895	52.9	2077-6741	3.410
10	1381	450	92172.8	44.43	767-1995	1.299
11	528	179	19508.4	53.48	246-810	0.576
12	1589	130	609888.6	102.55	130-3218	0.699
13	264	24	25865.7	124.46	24-593	0.088
14	0	0	0	0	0	0.000
15	0	0	0	0	0	0.000
16	6	1	30.2	203.49	1-18	0.009
Total	17811	5578	2956326	20.57	14147-21475	0.965

