

## maximising wildlife returns by minimising threats...

### Performance Indicators

Management performance in 2019		
Category	Performance	
1 Adequate staffing	Good	Good
2 Adequate expenditure	Weak	Weak
3 Audit attendance	Weak	Weak
4 NR management plan	Weak	Weak
5 Zonation	Weak	Weak
6 Leadership	Weak	Weak
7 Display of material	Weak	Weak
8 Event Book modules	Weak	Weak
9 Event Book quality	Weak	Weak
10 Compliance	Weak	Weak
11 Game census	Weak	Weak
12 Reporting & adaptive management	Weak	Weak
13 Law enforcement	Weak	Weak
14 Human Wildlife Conflict	Weak	Weak
15 Harvesting management	Weak	Weak
16 Sources of NR income	Weak	Weak
17 Benefits produced	Weak	Weak
18 Resource trends	Reasonable	Reasonable
19 Resource targets	Weak	Weak

**Key to performance indicators**

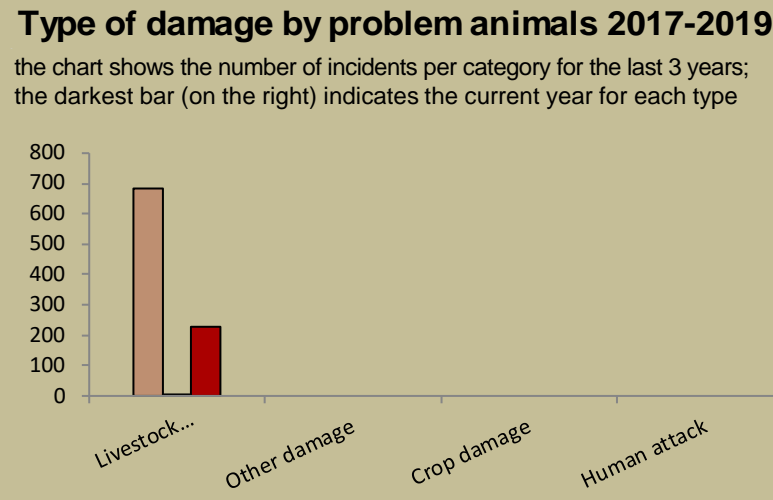
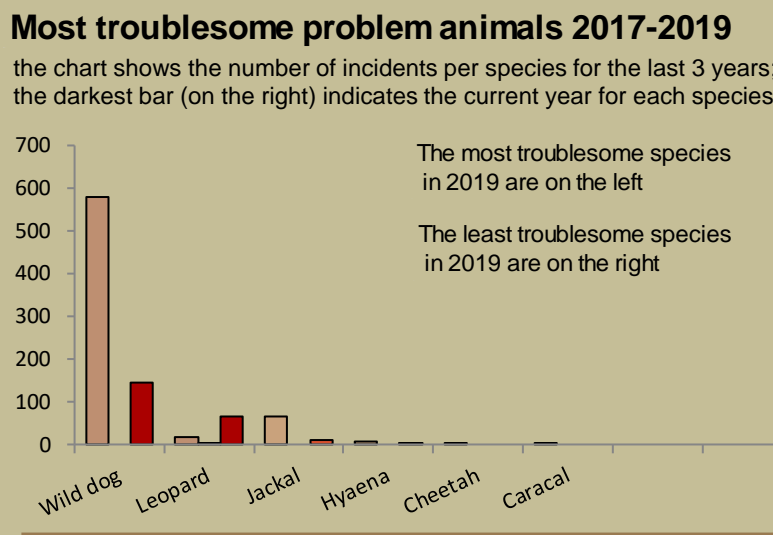
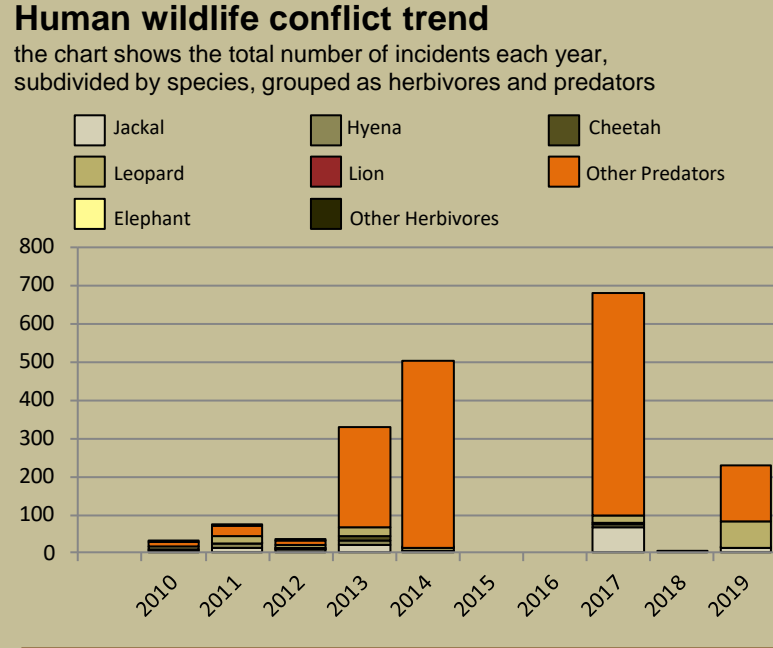
Weak/bad	Reasonable	Good
----------	------------	------

Performance is assessed on a scoring system from zero (none) to a maximum of between 3 and 6 (strong/excellent) depending on the indicator.

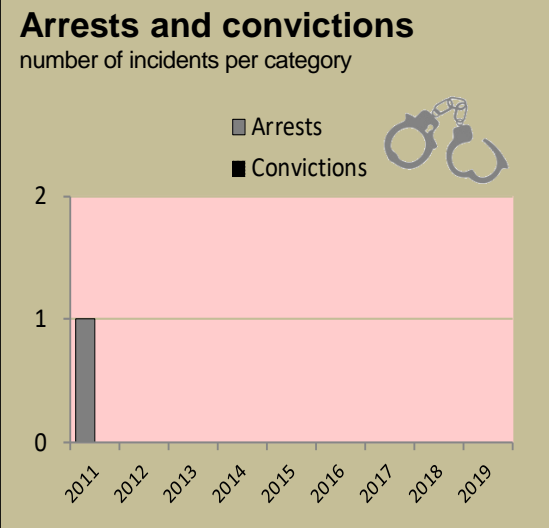
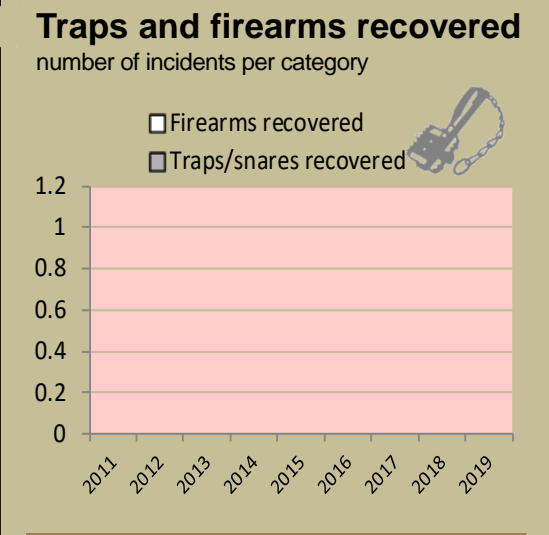
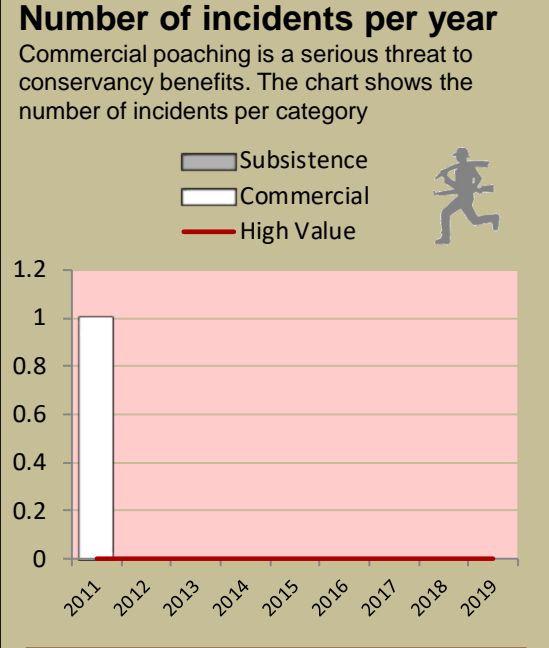
Indicators 1-17 reflect the performance of the management team in place in the conservancy and an efficient team can achieve a good rating in all 17 indicators.

Indicators 18 & 19 are influenced by external factors and are not considered a reflection of conservancy management. They indicate the current status of wildlife in the conservancy in relation to a theoretical optimal situation.

### Human wildlife conflict



### Poaching



### Wildlife removals – quota use and value

Species	Quota 2019			Animals actually used in 2019						Potential Trophy Value N\$	Potential Other use Value N\$
	Total	Trophy	Other Use	Trophy	Own Use & Premium	Shoot & Sell	Capture & Sale	Problem Animal	Total Use		
Duiker	5	1	4							1,900	168
Eland*	4	2	2							12,700	14,565
Gemsbok	4		4								2,592
Kudu*	4	1	3							5,900	38,958
Leopard	1	1								37,900	
Steenbok	10	3	7							3,500	144
Warthog	10	2	8							2,300	480

*Offtake data unavailable*

Effective monitoring is key to understanding the status of wildlife in the conservancy and for the effective management of these resources.

Conservancies reduce environmental costs while increasing environmental returns. Returns from wildlife can far outweigh human wildlife conflict costs.

# monitoring numbers and trends for a healthy conservancy...

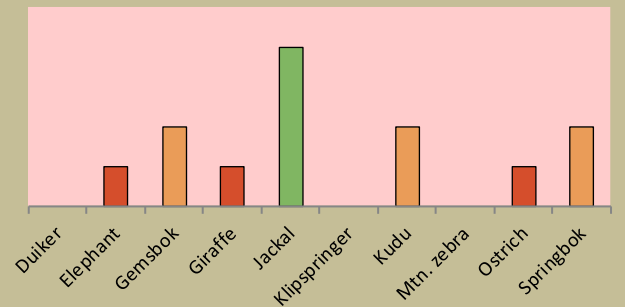
## Current wildlife numbers and status

Species	Animals Seen 2019	Estimated population range	Wildlife Status		
			Count Trend	National Guideline	Desired Status
Duiker				Yellow	
Elephant				Dark Orange	
Gemsbok				Orange	
Giraffe				Dark Orange	
Jackal				Green	
Klipspringer					
Kudu				Orange	
Mtn. zebra					
Ostrich				Dark Orange	
Springbok				Orange	

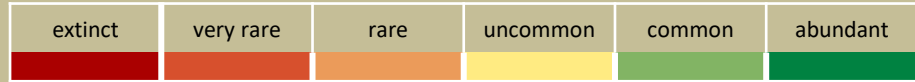
**Desired Number** – gives the species status in the conservancy based on what the conservancy would like to have.

**dark green** (abundant) – reduce a lot;  
**light green** (common) – reduce a little;  
**yellow** (uncommon) – keep numbers the same;  
**light orange** (rare) – double numbers;  
**dark orange** (very rare) – more than double numbers.

### Wildlife status summary in 2019

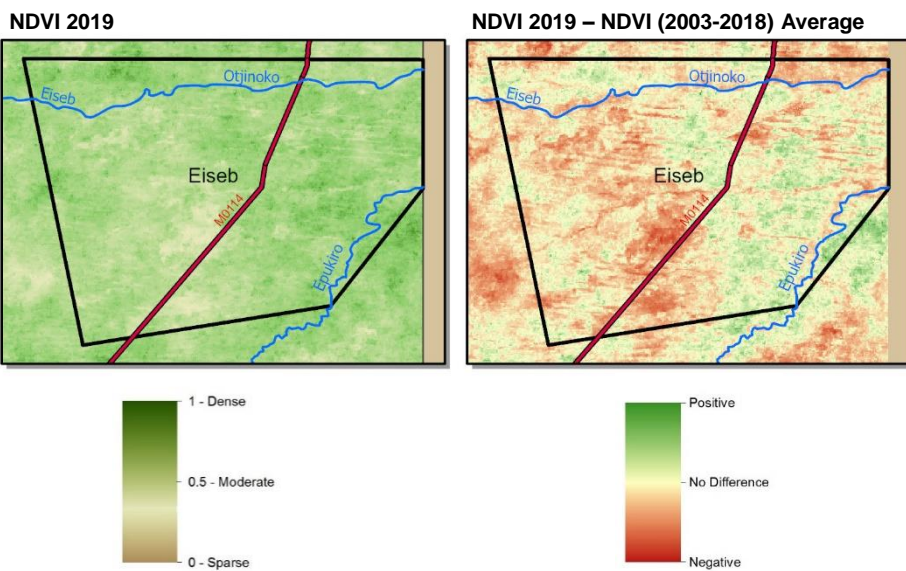


### Key to wildlife status

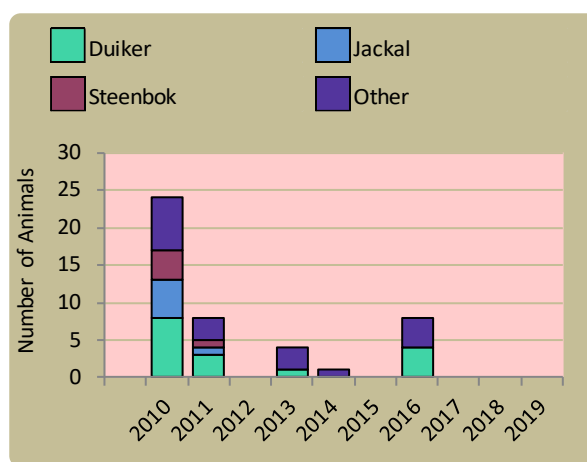


## Vegetation monitoring

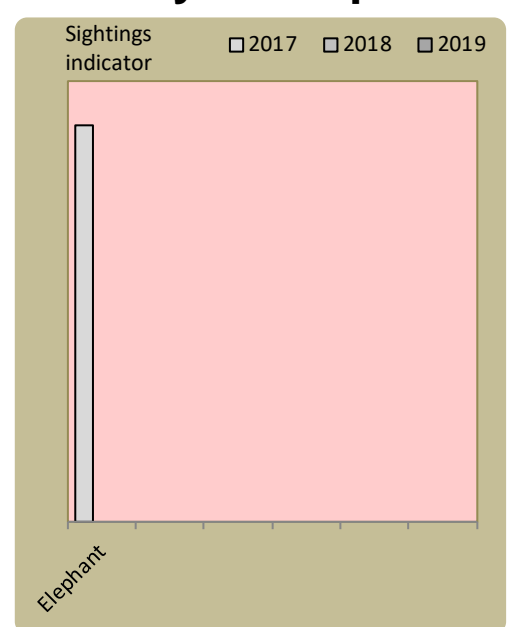
Green vegetation index (NDVI). Maps show vegetation cover during Feb-Apr of the current year and the difference between the current year and the long-term average (2003-2018)



## Wildlife mortalities



## Locally rare species

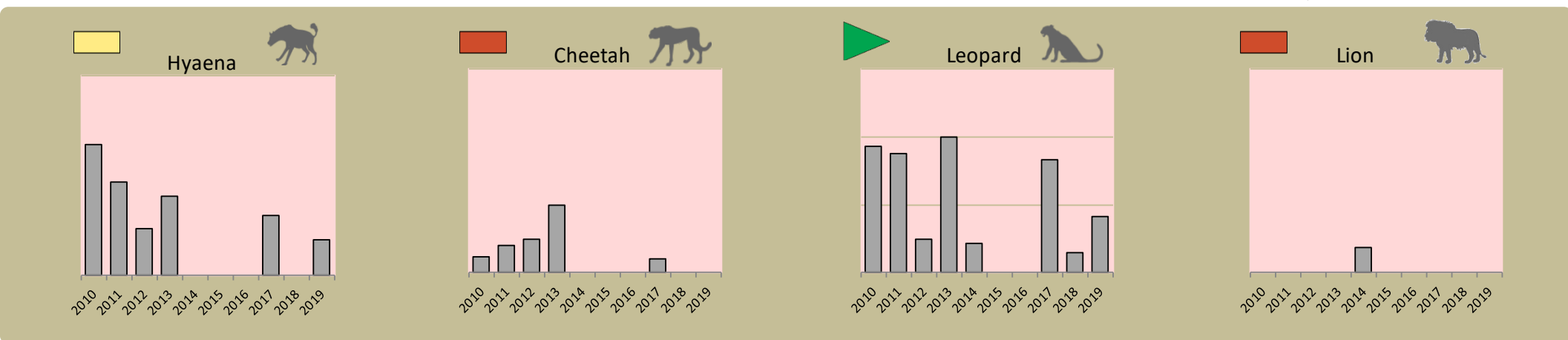
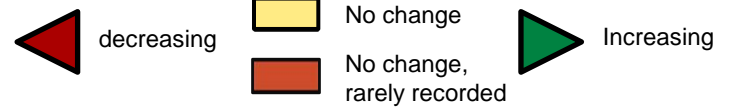


**Locally rare species** are not found very often in the conservancy and need special conservation attention.

## Annual game count – not undertaken in the east

## Predator monitoring

charts show the average number of animals seen per Event Book each year status barometers reflect the general sightings trend over the last 5 years



Wildlife provides a wide range of benefits. Some wildlife can cause conflicts, but all wildlife is of value to tourism, trophy hunting and a healthy environment.

By using all the available information and adapting and improving activities, threats such as human wildlife conflict, poaching and other issues can be minimised.

### Enabling wise conservancy governance...

#### Conservancy Statistics

Date Registered:	March 2009
Population (2011 census):	1360
Size (square kilometres):	6626
Registered members:	113

#### Key Compliance Requirements

Was an AGM held?	✓
Were elections held?	N/A
Were benefits distributed according to the BDP?	✗
Is game managed according to the GMUP?	✓
Was the financial report presented and approved?	✗

#### Conservancy Governance

	Male	Female	Total
Number of management committee members	8	2	10
<b>Attendance at AGM</b>			
Date of the last AGM:	26/10/2019		
Date of the next AGM:			
<b>Other important issues</b>			
Budget approved?	✗		
Work plan approved?	✗		
Annual conservancy report approved?			

#### Benefit Distribution

Type	Description	Beneficiary	Number
------	-------------	-------------	--------

#### Employment

	Male	Female	Total
Conservancy staff (Incl. CGG & CRM)	11	2	13
Number of Community Game Guards	11	2	13
Number of Community Resource Monitors			

#### Governance Performance Rating How well did the conservancy perform in the past year?

Performance Category	This Year	Prev. Year	Explanation of performance category
1 Member engagement	Weak		The conservancy is adequately engaging its members
2a Benefit planning	None		The conservancy developed its BDP in a transparent and participatory manner
2b Benefit distribution	Weak		The conservancy distributes benefits to its members in a fair, transparent and equitable manner
3 Accountability	Moderate		Conservancy members are holding the management committee accountable
4 Compliance	Weak		The conservancy is compliant with the standard operating procedures (SOPs)
5 Stakeholder engagement	None		The conservancy maintains relationships with key external stakeholders
6 Financial management	None		The conservancy is effectively managing its finances

Colour codes:

none

weak

moderate

strong

exceptional

N/A