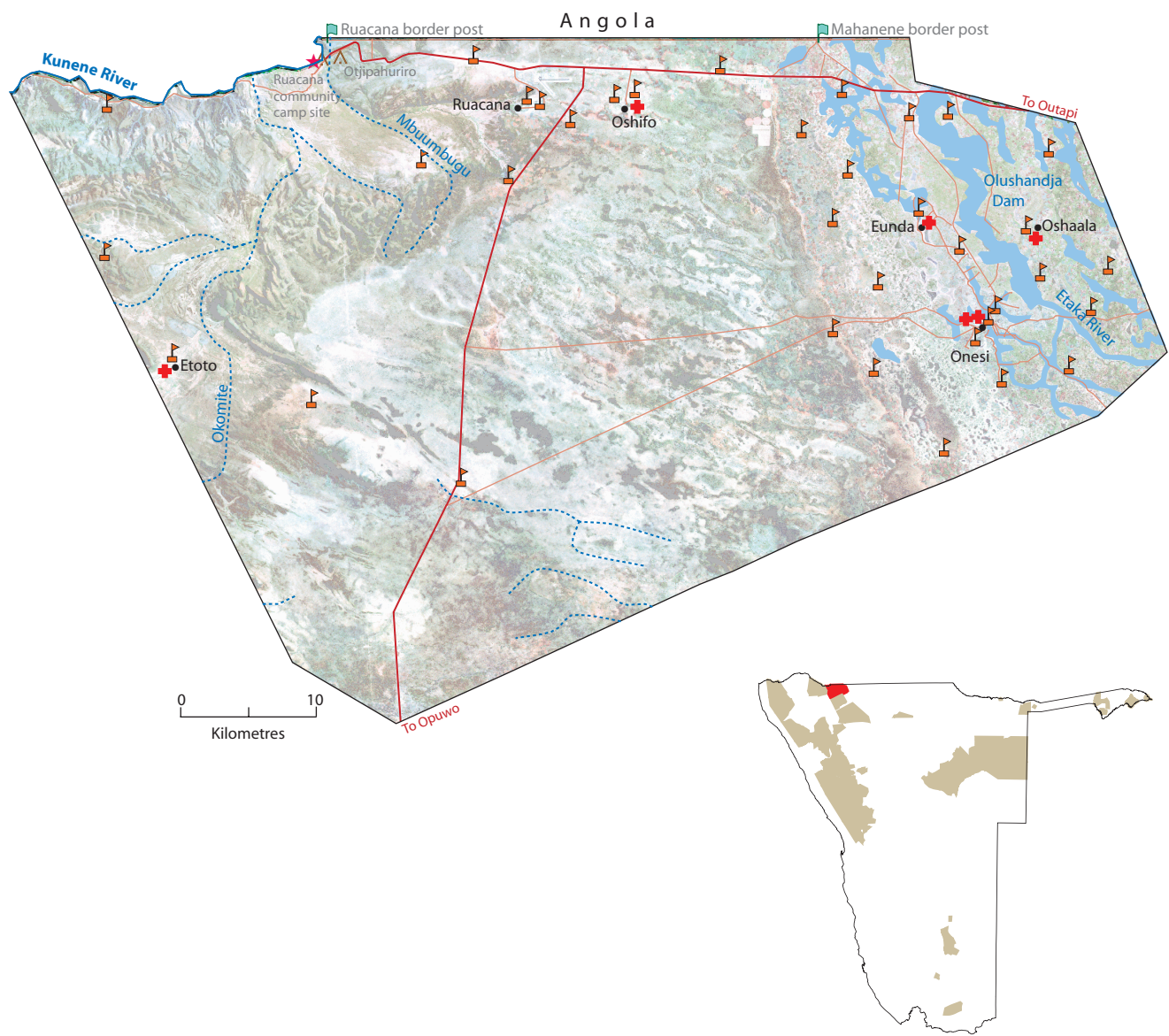


Namibia's communal conservancies



**UUKOLONKADHI-RUACANA**  
(named after a district area)

<b>Registered</b>	September 2005
<b>Address</b>	Uukolonkadhi-Ruacana Conservancy P.O. Box 44, Ruacana Telephone 065-270090 (MET) or 065-258877(TA)
<b>Approximate population</b>	25,000
<b>Main home languages</b>	Oshiwambo, Otjiherero, Otjijimba and Dhemba
<b>Area</b>	2,993 square kilometers
<b>Region</b>	Omusati
<b>Geographical features</b>	Flat to mountainous area with forest and grassland and woodlands. Average annual rainfall of 300-400 mm
<b>Unusual or important features</b>	Ruacana waterfall on the Kunene river, Onguma, permanent river, Olushandja Dam
<b>Major wildlife resources</b>	Elephant, Springbok, Mountain Zebra, Ostrich, Black-faced impala, Hippo, Crocodiles
<b>Management</b>	Twenty one Conservancy committee members, ten men and eleven women. Six Community Game Guards – two volunteers and four paid
<b>Enterprises</b>	Community campsite (Otjipahuriro), onguma (rocks producing ochre powder) and hunting for own use
<b>Support agencies</b>	Rössing Foundation, IRDNC, MET, USAID LIFE Plus Project, WWF, LAC, ICEMA