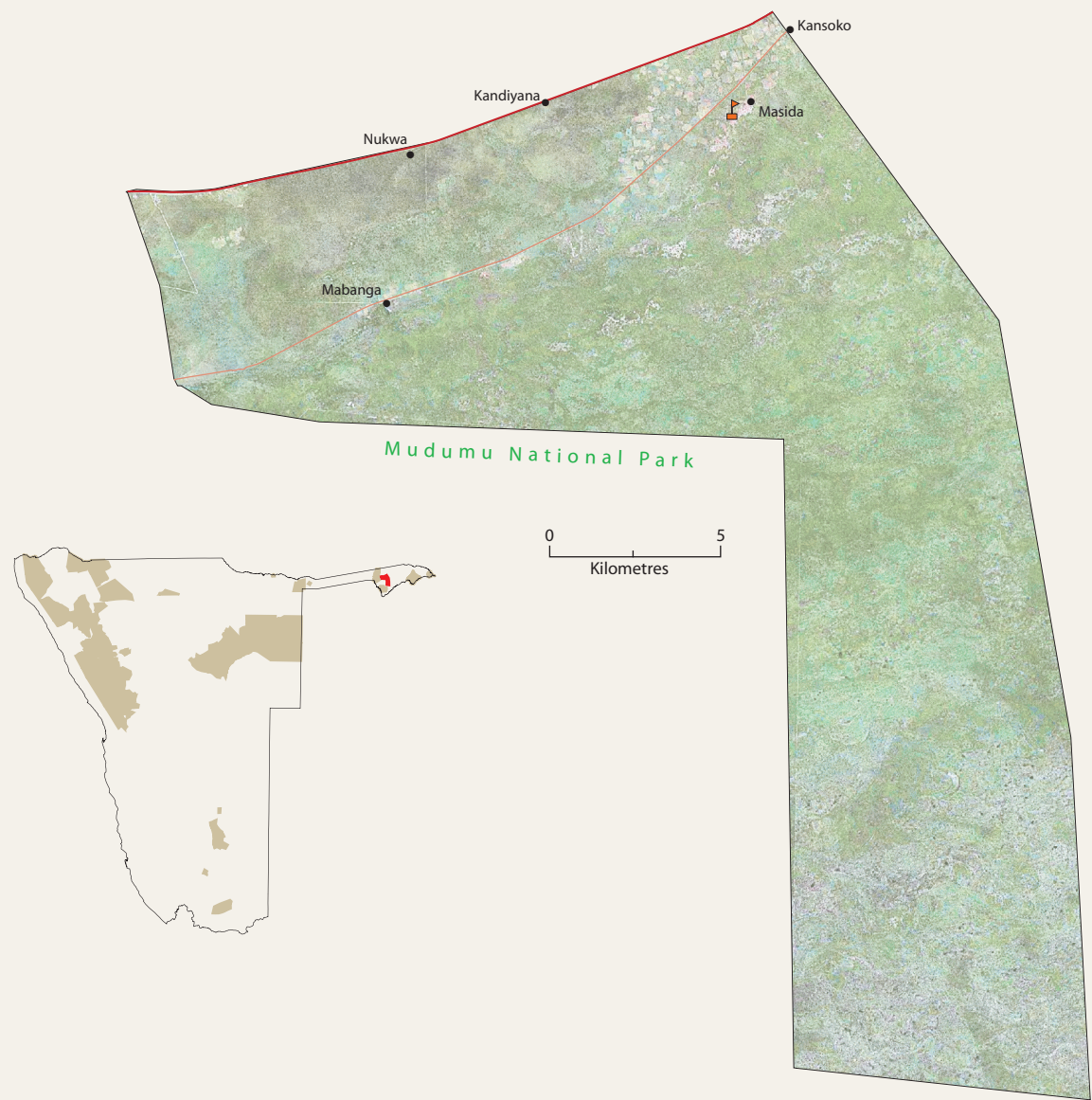


CONSERVANCY PROFILES



SOBBE

(From the Sifwe expression ‘that which one owns cannot be taken away from you’)

Registered	October 2006
Address	Sobbe Conservancy P.O. Box 1981, Ngweze
Telephone	066-252666
Approximate population	2,000
Main home languages	Sifwe
Area	404 square kilometres
Region	Caprivi
Geographical features	Woodland and grassland. Average annual rainfall is 600 mm
Unusual or important features	Adjacent to Mudumu National Park
Major wildlife resources	Kudu, Elephant, Roan, Eland (introduced 2007), Zebra, Warthog, Duiker, Hyena, Black-backed Jackal
Management	Conservancy management committee of seven men and seven women. Twelve staff are employed of which four are women.
Enterprises	Trophy hunting, crafts and hunting for own use
Support agencies	MET, IRDNC (main local NGO), USAID LIFE Plus Project, WWF and ICEMA