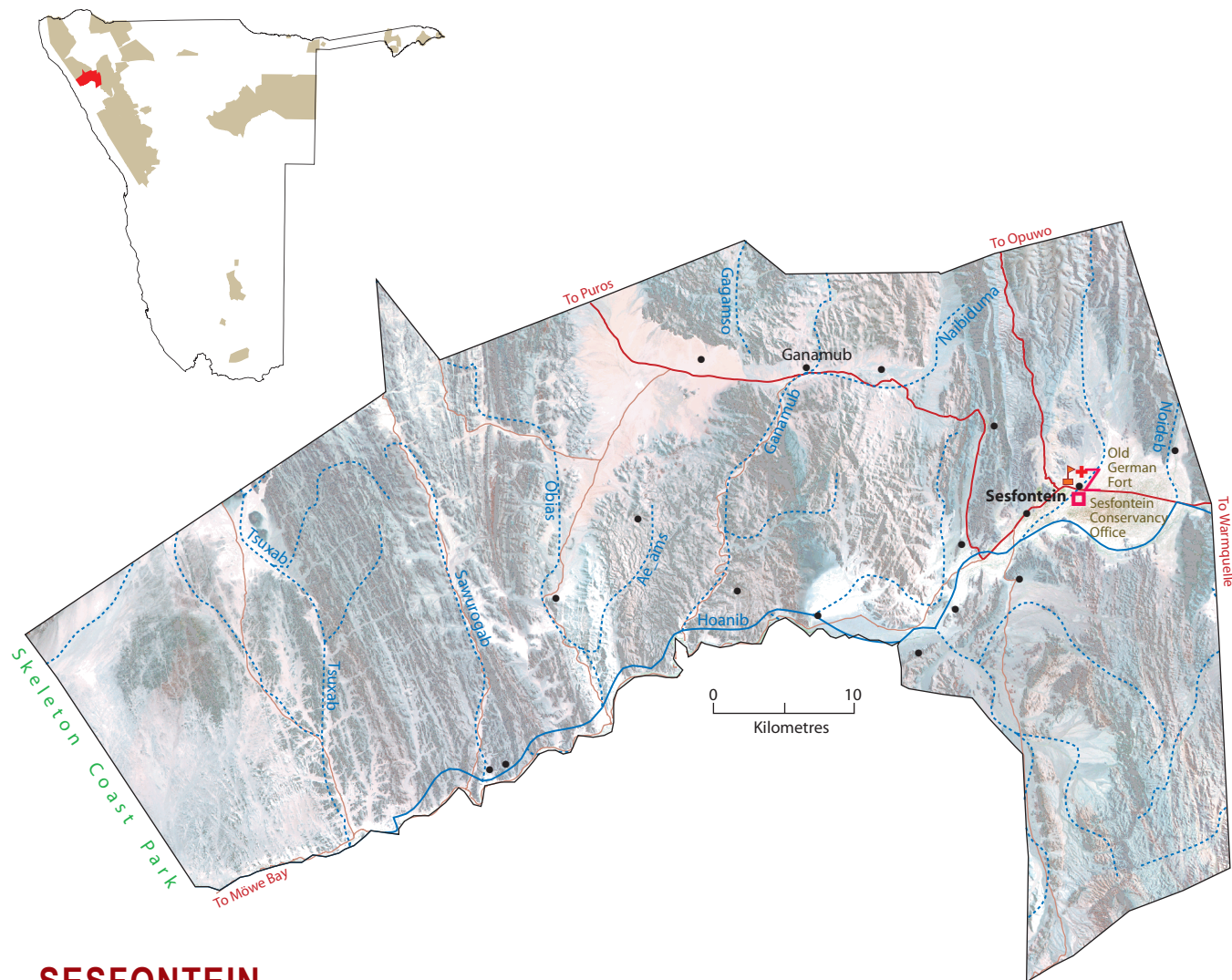


Namibia's communal conservancies



SESFONTEIN

(named after the six local fountains)

Registered	July 2003
Address	Sesfontein Conservancy P.O. Box 123, Khorixas
Telephone	065-275536
Approximate population	2,500
Main home languages	Otjiherero, Khoekhoegowab
Area	2,591 square kilometers
Region	Kunene
Geographical features	Arid with less than 150 mm rain/year. Largely semi-desert and sparse savanna. Landscape is a mix of hills, plains and wooded river valleys
Unusual or important features	Scenic Hoanib Valley, fountains, old German fort
Major wildlife resources	Elephant, Leopard, Lion, Black Rhino, Cheetah, Mountain Zebra, Giraffe, Kudu, Oryx, Springbok, Duiker, Steenbok, Klipspringer, Ostrich
Management	Management Committee of seven men and two women. Five Community Game Guards, one Field Officer, a receptionist, a Financial Administrator and a cleaner are employed. Monitoring using annual vehicle-based counts and event books
Enterprises	Trophy Hunting; joint venture lodge agreements; Joint venture agreement with Palmwag lodge; negotiations pending with Fort Sesfontein; own use hunting; shoot and sell; campsite to be constructed during 2008
Support Agencies	MET, IRDNC (main local NGO), NACOBTA, USAID LIFE Plus, WWF, SRT, LAC