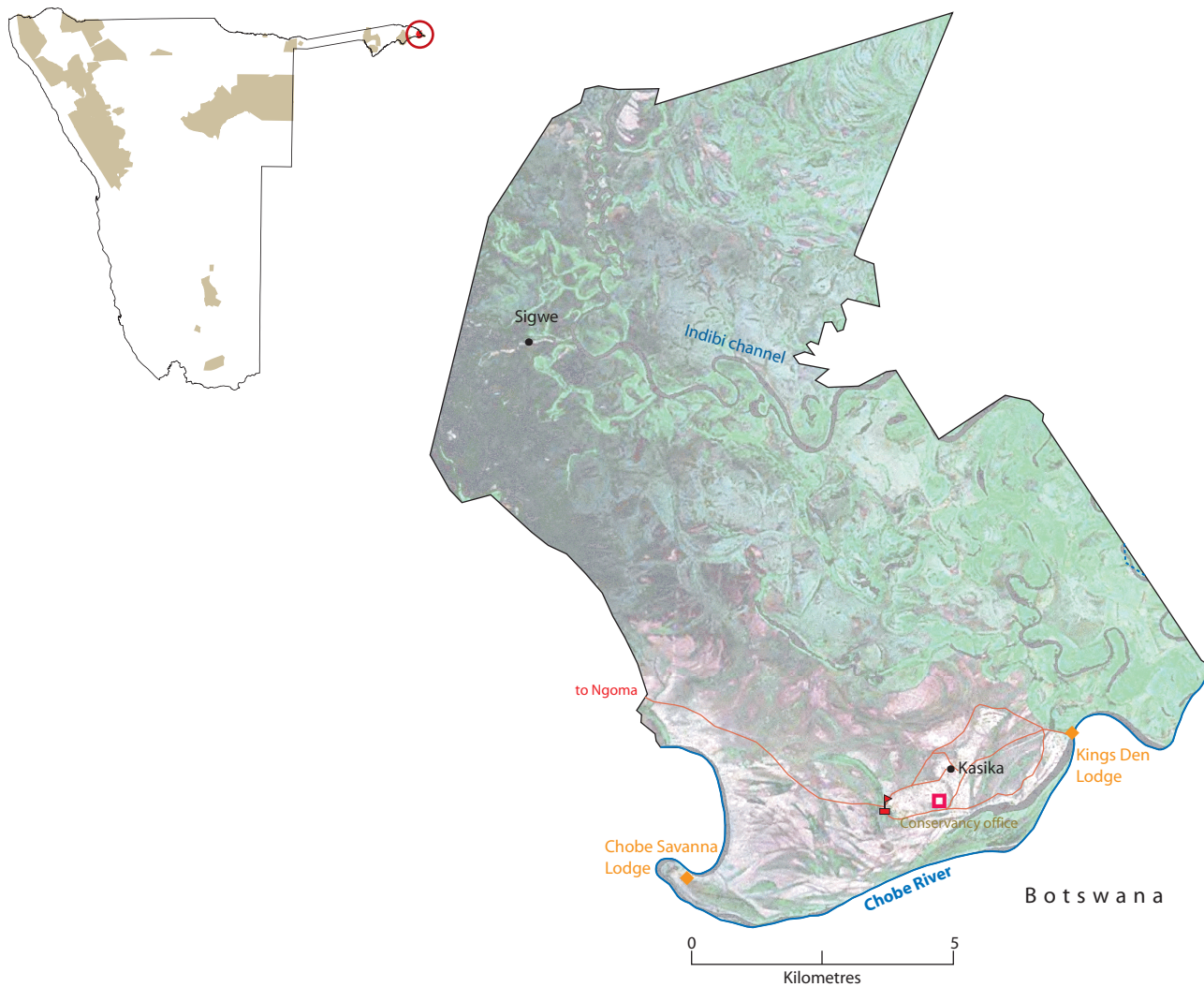


## Namibia's communal conservancies



### KASIKA

(meaning the small Mangosteen tree)

<b>Registered</b>	December 2005
<b>Address</b>	Kasika Conservancy P.O. Box 1020, Katima Mulilo
<b>Telephone</b>	066-252666
<b>Approximate population</b>	1,500
<b>Main home languages</b>	Subia
<b>Area</b>	147 square kilometers
<b>Region</b>	Caprivi
<b>Geographical features</b>	Annual rainfall of over 600 mm. Floodplain area between Chobe and Zambezi Rivers
<b>Unusual or important features</b>	Close to Chobe and Zambezi rivers, with water visible throughout the year. Borders Chobe National Park in Botswana
<b>Major wildlife resources</b>	Elephant, Buffalo, Crocodile, Hippo, Sitatunga, Zebra
<b>Management</b>	Management committee consists of thirty three members, of which six are women. An Executive of eight is formed from this committee, as well as traditional authority representative as advisor Staff consists of several Community Game Guards and Community Resource Monitors
<b>Enterprises</b>	Trophy hunting, joint venture lodge agreements (King's Den and Chobe Savanna Lodge), tourism activities including traditional dancing, birding and fishing trips, craft making and hunting for own use.
<b>Support Agencies</b>	MET, IRDNC (main local NGO), USAID LIFE Plus, WWF, NNF, LAC, Conservation International, ICEMA