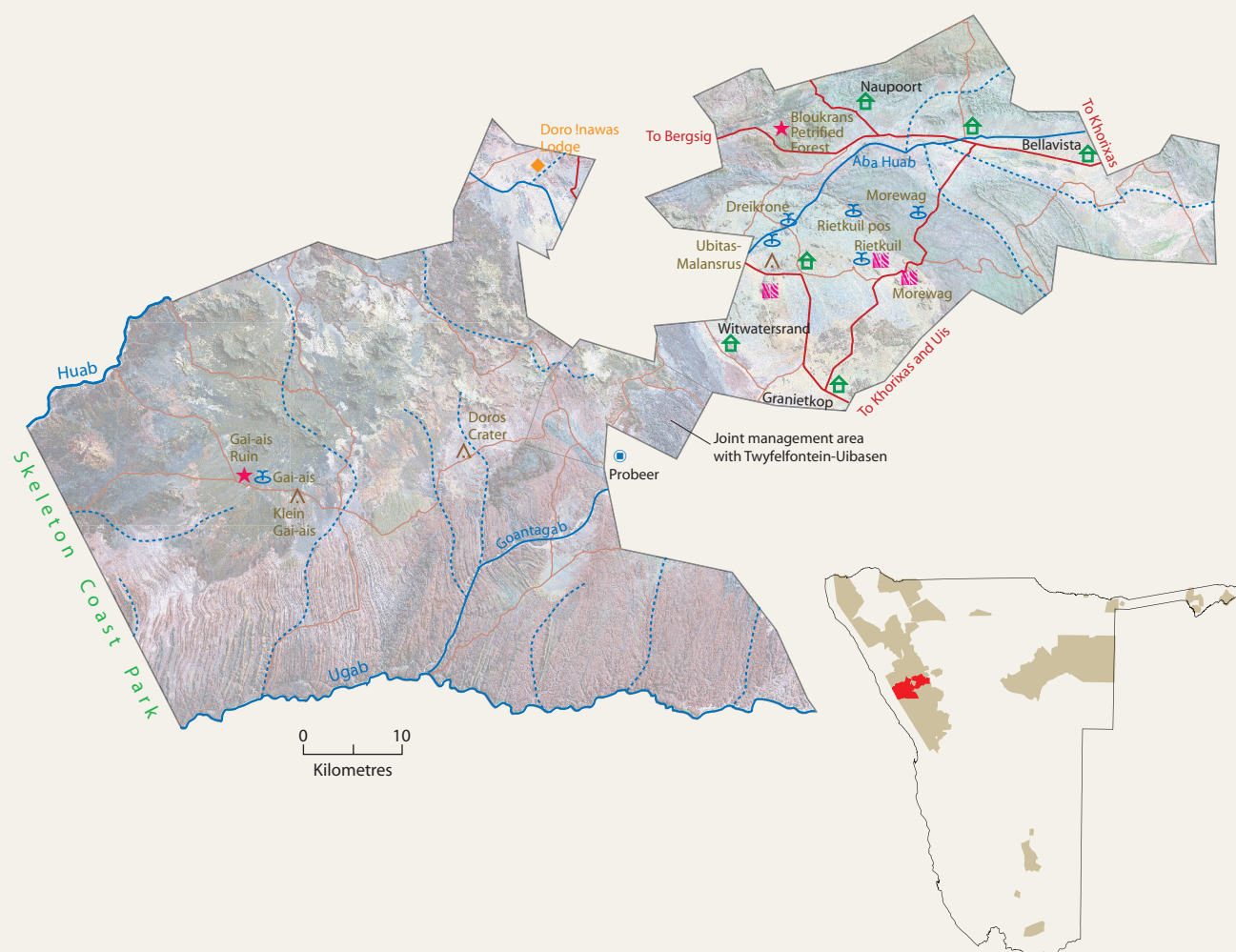


CONSERVANCY PROFILES



DORO !NAWAS

(Named after the Doros Crater which means the place where rhinos roam)

Registered	December 1999
Address	Doro !nawas Conservancy P.O. Box 34, Khorixas
Telephone	067-331940
Approximate population	1,500
Main home languages	Khoekhoegowab
Area	4,073 square kilometers
Region	Kunene
Geographical features	Arid with less than 100 mm rain/year. Largely semi-desert and sparse savanna. Landscape of rugged, folded hills, plains and wooded river valleys
Unusual or important features	Petrified Forest, abundant Welwitschia plants
Major wildlife resources	Elephant, Leopard, Black Rhino, Cheetah, Steenbok, Kudu, Ostrich, Giraffe, Oryx, Mountain Zebra, Springbok, Klipspringer, Duiker
Management	Management Committee of twelve men and five women. Four Community Game Guards and one Office Coordinator, two Conservancy Facilitators and one Secretary are employed Monitoring using annual vehicle-based counts and event books
Enterprises	Trophy hunting contract and joint venture lodge (Wilderness Safaris Namibia), own use hunting, shoot and sell hunting, conservancy campsite (Granietskop), premium hunting
Support agencies	MET, RISE (main local NGO), NNF, NACOBTA, LAC, USAID LIFE Plus, WWF, SRT, ICEMA