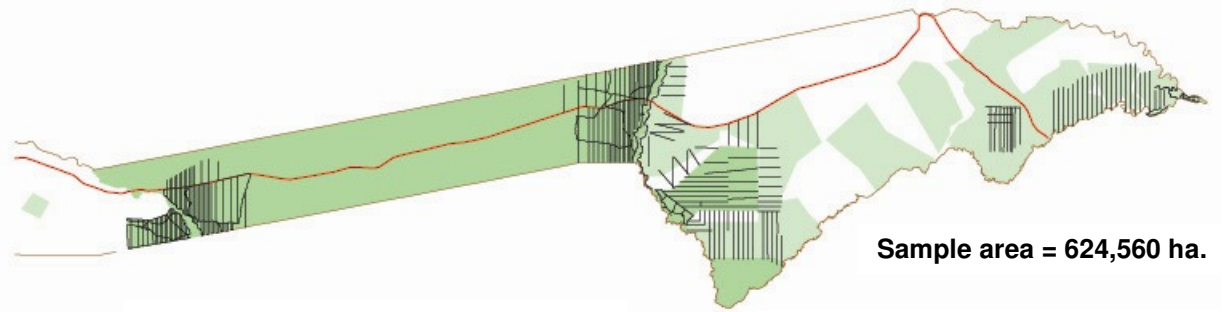


GAME COUNTS IN BWABWATA & CAPRIVI

Dry Season 2009

Live sightings

Numbers seen by conservation area



Sample area = 624,560 ha.

	Parks			Conservancies												
	Bwabwata West - Mahango	Bwabwata West - Buffalo	Bwabwata East	Mudumu	Balyerwa	Dzoti	Impalila	Kabulabula	Kasika	Kwandu	Mashi	Mayuni	Nakoboleiwa	Salambala	Sobbe	Wuparo
Total km	311	548	805	315	92	90	16	22	34	44	94	67	33	173	96	59
No. of routes	22	35	56	23	12	12	4	6	7	6	9	6	8	16	10	5

Numbers seen by habitat

Species	Riverine zone with floodplain grassland	Woodland < 8km from the river	Woodland > 8km from the river	Eastern floodplain and grassland	Riverine forest (Impalila)
Baboon	64	20	0	0	0
Buffalo	1620	265	266	0	0
Bushbuck	6	4	0	0	0
Bushpig	0	0	1	0	0
Crocodile	18	1	0	5	0
Duiker	13	81	144	1	0
Eland	0	0	27	0	0
Elephant	221	729	1373	10	0
Giraffe	1	15	22	0	0
Hippo	34	2	0	7	0
Hyaena	0	0	0	0	0
Impala	620	578	69	55	0
Jackal BB	1	0	1	0	0
Kudu	325	127	237	0	0
Lechwe	178	30	0	3	0
Leopard	0	0	0	0	0
Lion	0	0	0	0	0
Ostrich	1	6	8	0	0
Reedbuck	65	9	0	0	0
Roan	9	47	185	0	0
Sable	42	155	100	0	0
Steenbok	10	13	44	0	0
Tsessebe	25	6	15	0	0
V. Monkey	12	12	19	0	0
Warthog	80	56	94	6	0
Wild dog	0	0	0	0	0
Wildebeest	58	37	133	0	0
Zebra	331	245	332	504	0

Numbers seen - 2009 vs 2008

Species	Animals		Groups	
	2008	2009	2008	2009
Baboon	157	84	8	6
Buffalo	1324	2151	32	57
Bushbuck	14	10	9	7
Bushpig	0	1	0	1
Crocodile	7	24	5	14
Duiker	185	239	173	213
Eland	5	27	3	5
Elephant	2383	2333	152	173
Giraffe	61	38	18	16
Hippo	44	43	12	13
Hyaena	9	0	7	0
Impala	784	1247	83	115
Jackal BB	1	2	1	2
Kudu	605	689	137	161
Lechwe	207	211	10	19
Leopard	3	0	3	0
Lion	2	0	1	0
Ostrich	12	15	8	7
Reedbuck	82	74	22	22
Roan	80	241	24	48
Sable	287	297	46	53
Steenbok	31	67	29	63
Tsessebe	57	46	15	13
V. Monkey	84	43	12	9
Warthog	146	234	56	82
Wild dog	0	0	0	0
Wildebeest	149	228	10	15
Zebra	1538	1412	60	76

Species	Bwabwata West - Mahango	Bwabwata West - Buffalo	Bwabwata East	Mudumu	Balyerwa	Dzoti	Impalila	Kabulabula	Kasika	Kwandu	Mashi	Mayuni	Nakoboleiwa	Salambala	Sobbe	Wuparo
Baboon	12		30	42												
Buffalo	27	597	147	50												
Bushbuck	4	6														
Bushpig																
Crocodile	2	16	1				2		3							
Duiker	20	95	77	9	2	5					10	3		10	8	
Eland			5	1							20					1
Elephant	71	937	865	371	16	40			19			1				13
Giraffe	21		13									4				
Hippo	14	16	3	2					7						1	
Hyaena																
Impala	291	69	607	151						6	23		55	39		
Jackal BB					1										1	
Kudu	131	321	165	16	14					1	12	3		13	13	
Lechwe	116	1	87							2				3		
Leopard																
Lion																
Ostrich	11		4													
Reedbuck	28	31	12		3											
Roan	61	125	4	44	1	1						2				3
Sable	59	150	72	16												
Steenbok	9	23	27	5	1	1										1
Tsessebe	27	4	11	4												
V. Monkey	11	11	9	12												
Warthog	53	32	42	59		4									39	5
Wild dog																
Wildebeest	1	3	60	148												16
Zebra	102		277	205	15	6							3	81	723	

Estimates

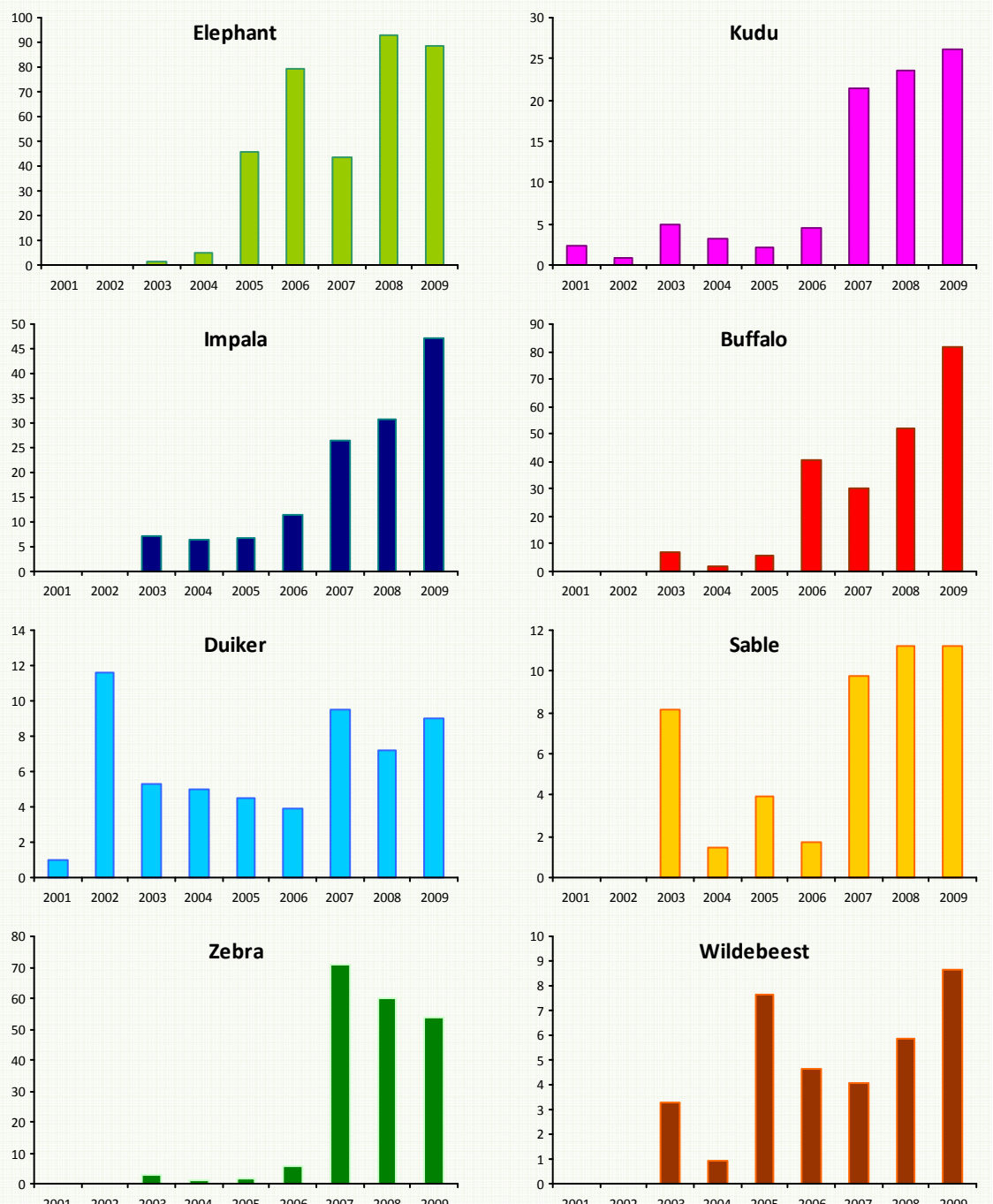
Local estimates were calculated using DISTANCE for all species with sufficient sightings. The estimates were calculated as an average of the current and previous year's counts. The bottom row of (hyphenated) numbers = 95% Confidence Intervals.

Species	Bwabwata West - Mahango	Bwabwata West - Buffalo	Bwabwata East	Kwandu area	Mudumu	Balyerwa area	Salambala	Nakoboleiwa area
Buffalo	42	771	1500 +	0	*	0	0	0
	12-145	286-2080	*	0	*	0	0	0
Duiker	102	605	1328	1239	593	450	254	0
	46-226	407-896	960-1840	738-2080	323-1088	156-1293	146-443	0
Elephant	190	2682	4503	*	3640	549	0	201
	71-520	1640-4383	2207-9253	*	2053-6456	178-1695	0	71-575
Giraffe	43	0	114	*	0	0	0	0
	16-122	0	36-355	*	0	0	0	0
Impala	627	350	1684	*	0	0	430	*
	347-1131	146-839	1046-2713	*	0	0	152-1220	*
Kudu	480	1576	1174	604	*	*	*	0
	295-786	981-2537	714-1931	327-1117	*	*	*	0
Lechwe	97	*	49	*	0	0	0	*
	26-362	*	17-140	*	0	0	0	*
Reedbuck	19	26	46	0	0	0	0	0
	6-62	10-70	19-112	0	0	0	0	0
Roan	151	304	*	*	342	*	0	0
	67-345	130-706	*	*	116-1006	*	0	0
Sable	138	359	297	0	*	0	0	0
	59-330	183-702	84-1268	0	*	0	0	0
Steenbok	*	145	451	0	194	*	0	0
	*	78-269	225-908	0	60-629	*	0	0
Tsessebe	206	*	*	0	*	0	0	0
	83-509	*	*	0	*	0	0	0
Warthog	279	162	375	*	1166	*	162	0
	145-537	79-333	153-942	*	500-2716	*	65-399	0
Zebra	221	0	1707	*	2201	*	*	1423
	102-291	0	919-3180	*	1077-4497	*	*	407-4974

* = too few observations to provide useful local estimates of numbers
0 = no animals seen in counts

Kwandu area: Kwandu, Mashi, Mayuni, Sobbe
Balyerwa area: Balyerwa, Dzoti, Wuparo
Nakoboleiwa area: Nakoboleiwa, Kabulabula, Kasika, Impalila

Trends – Numbers per 100km



Trends were calculated using both dry season and wet season counts for years prior to 2007, and only dry season counts were used from 2007 onwards. Great care should be taken when interpreting the charts prior to, and after 2007 as, in addition to the count season changing, the number of transects increased and their spatial distribution expanded at this time.