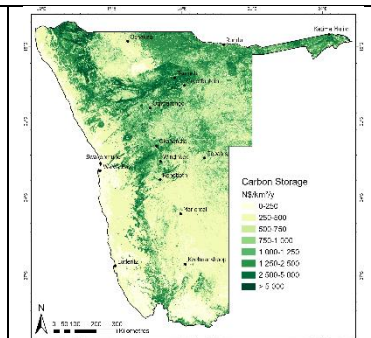


# NNF Atlas 2020 spatial data information

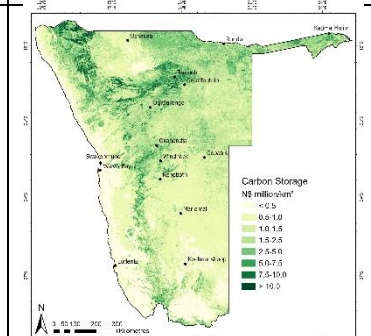
## Carbon storage (annual value)

CarbonStorage\_Annual.tif: GeoTiff with values of carbon storage value in N\$ for 2019 on an annual basis.



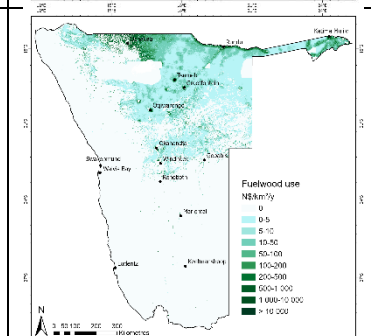
## Carbon storage (asset value)

CarbonStorage\_Asset.tif: GeoTiff with values of carbon storage value in N\$ for 2019 as an asset value.



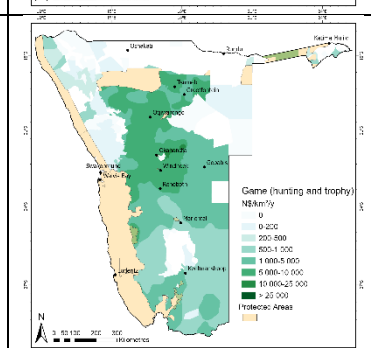
## Fuelwood use

Fuelwood\_use.tif: GeoTIFF with values of firewood use resource rent value per square kilometre for 2019.



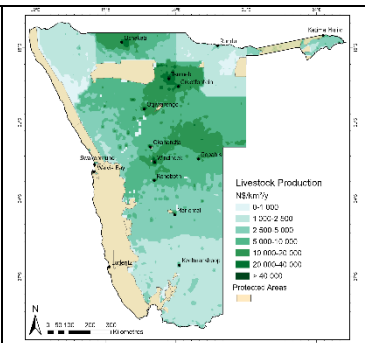
## Game (hunting and trophy)

Game2019.shp: shapefile of the resource rent value of game (meat offtake and trophy) updated to 2019 values in N\$. Single values are given for different regions within conservancies, one national park (where consumptive use is permitted) and privately-owned land.



## Livestock production

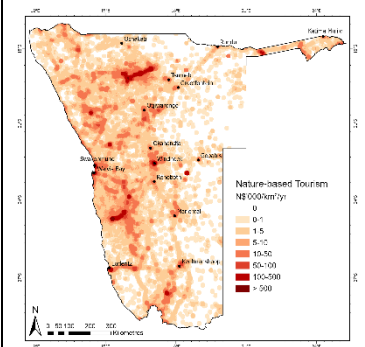
LivestockProduction.tif: GeoTIFF of livestock contribution to GDP (direct value added = gross value - inputs) in 2019 of cattle, sheep and goats combined at 1 km<sup>2</sup> resolution in N\$. Value is per *hectare*. Note raster value is 98.46% of true country value due to resampling of input datasets which intersect across the country's borders.



## Leisure tourism value

Two datasets:

- Tourism\_shapefile: shapefile with 1 km<sup>2</sup> grids with value of nature-based tourism spend value for 2019 in N\$
- Nam\_Tourism\_NatBased\_smoothed.tif: GeoTIFF of smoothed version of tourism shapefile using bilinear resampling. Note the total value is 99.6% of true value due to resampling and smoothing which affects the values at country borders. Shows false positive values due to smoothing and should only be used for display and visual purposes, not analysis.



Project leader contact: Jane Turpie, [jane@anchorenvironmental.co.za](mailto:jane@anchorenvironmental.co.za)

Geospatial data contact: Joshua Weiss, [josh@anchorenvironmental.co.za](mailto:josh@anchorenvironmental.co.za)