

## maximising wildlife returns by minimising threats...

### Performance Indicators

#### Management performance in 2019

Category	Performance
1 Adequate staffing	Good
2 Adequate expenditure	Good
3 Audit attendance	Good
4 NR management plan	Weak/Bad
5 Zonation	Good
6 Leadership	Good
7 Display of material	Weak/Bad
8 Event Book modules	Weak/Bad
9 Event Book quality	Good
10 Compliance	Good
11 Game census	Good
12 Reporting & adaptive management	Good
13 Law enforcement	Good
14 Human Wildlife Conflict	Weak/Bad
15 Harvesting management	Good
16 Sources of NR income	Good
17 Benefits produced	Good
18 Resource trends	Good
19 Resource targets	Good

#### Key to performance indicators



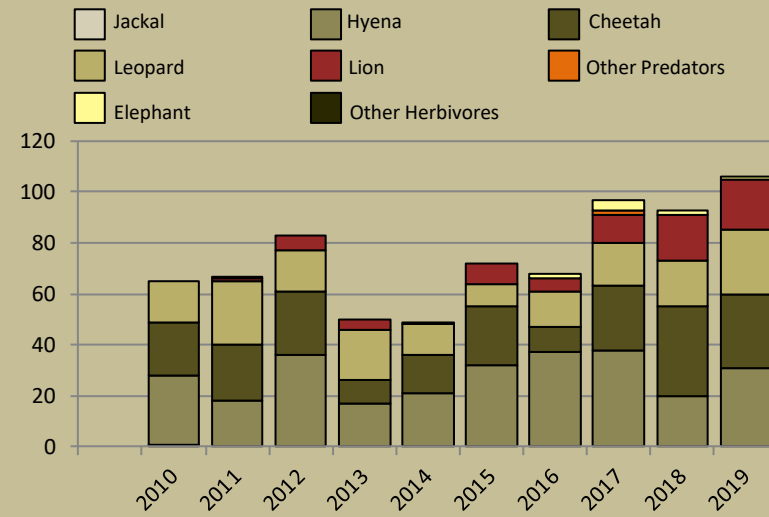
Performance is assessed on a scoring system from zero (none) to a maximum of between 3 and 6 (strong/excellent) depending on the indicator.

Indicators 1-17 reflect the performance of the management team in place in the conservancy and an efficient team can achieve a good rating in all 17 indicators. Indicators 18 & 19 are influenced by external factors and are not considered a reflection of conservancy management. They indicate the current status of wildlife in the conservancy in relation to a theoretical optimal situation.

### Human wildlife conflict

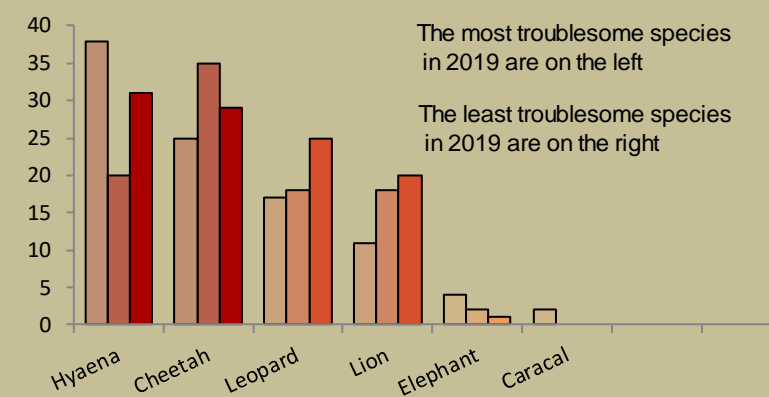
#### Human wildlife conflict trend

the chart shows the total number of incidents each year, subdivided by species, grouped as herbivores and predators



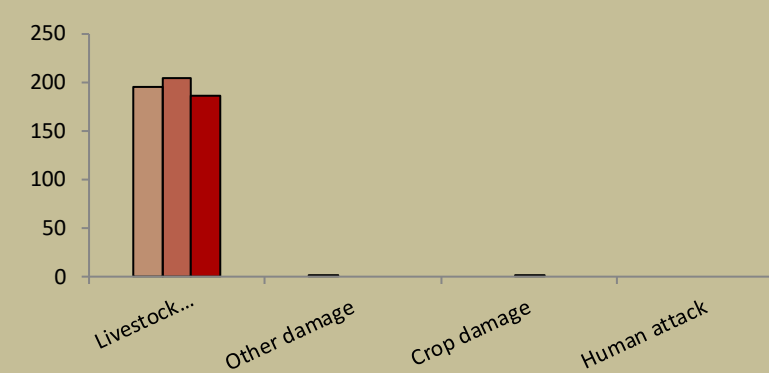
#### Most troublesome problem animals 2017-2019

the chart shows the number of incidents per species for the last 3 years; the darkest bar (on the right) indicates the current year for each species



#### Type of damage by problem animals 2017-2019

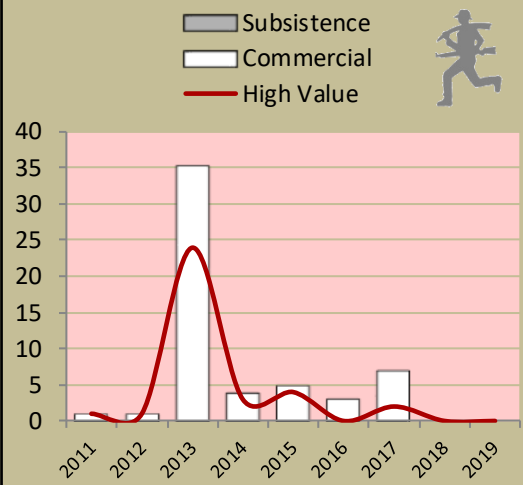
the chart shows the number of incidents per category for the last 3 years; the darkest bar (on the right) indicates the current year for each type



### Poaching

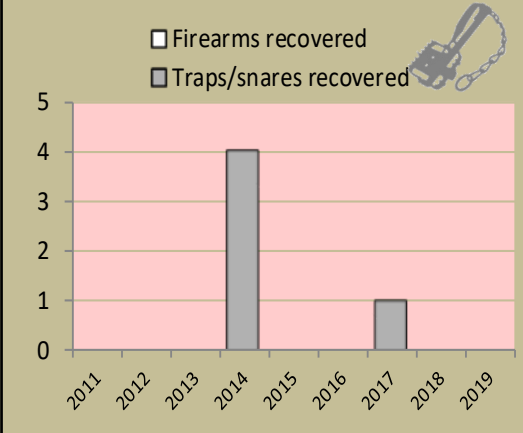
#### Number of incidents per year

Commercial poaching is a serious threat to conservancy benefits. The chart shows the number of incidents per category



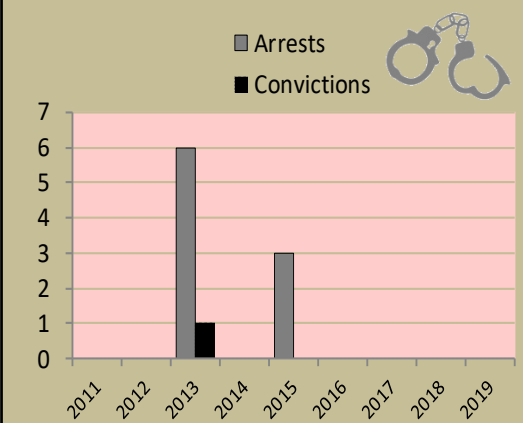
#### Traps and firearms recovered

number of incidents per category



#### Arrests and convictions

number of incidents per category



### Wildlife removals – quota use and value

#### Potential value estimates (N\$) for species are based on:

• **Potential trophy value** - the average trophy value for that species in the conservancy landscape

trophy values vary depending on trophy quality, international recognition of the hunting operator and the hunting area

• **Potential other use value** - the average meat value for common species

or

the average live sale value of each high value species (indicated with an \*). High value species are never used for meat

Fractions of animals indicate that a quota of 1 animal was awarded with conditions i.e. a) over a period of several years and/or b) is shared with other conservancies

Species	Quota 2019			Animals actually used in 2019						Potential Trophy Value N\$	Potential Other use Value N\$
	Total	Trophy	Other Use	Trophy	Own Use & Premium	Shoot & Sell	Capture & Sale	Problem Animal	Total Use		
Baboon	5	5								600	
Caracal	1	1								2,700	
Cheetah	1	1								11,100	
Gemsbok	15	10	5	6					6	4,300	2,592
Giraffe	4	3	1	1					1	10,600	13,440
Jackal	5	5		1					1	400	
Klipspringer	2	2								5,500	
Kudu*	10	7	3							9,900	38,958
Leopard	1	1		1					1	38,900	
Ostrich	15	5	10	4					4	2,000	720
Springbok	120	20	100	7					7	2,700	624
Steenbok	2	2								1,700	
Mtn Zebra	50	16	34	11					11	6,300	3,984

Effective monitoring is key to understanding the status of wildlife in the conservancy and for the effective management of these resources.

Conservancies reduce environmental costs while increasing environmental returns. Returns from wildlife can far outweigh human wildlife conflict costs.

# monitoring numbers and trends for a healthy conservancy...

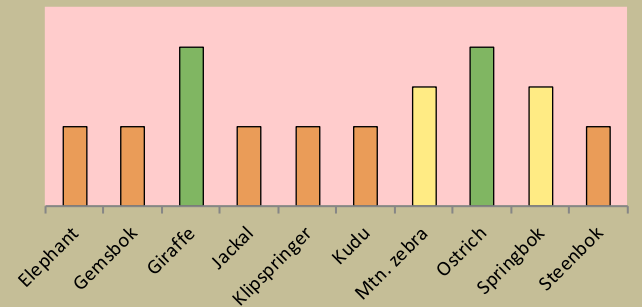
## Current wildlife numbers and status

Species	Animals Seen 2019	Estimated population range	Wildlife Status		
			Count Trend	National Guideline	Desired Status
Elephant			dark orange	yellow	
Gemsbok			dark orange	orange	
Giraffe	21	42 - 60	green	yellow	
Jackal			dark orange	yellow	
Klipspringer			dark orange	orange	
Kudu	5	24 - 80	dark orange	orange	
Mtn. zebra	52	121 - 210	green	orange	
Ostrich	9	19 - 30	yellow	orange	
Springbok	338	653 - 1700	yellow	orange	
Steenbok			dark orange	orange	

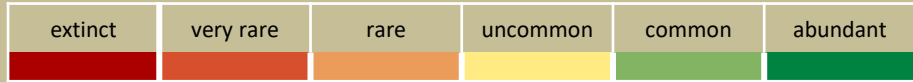
**Desired Number** – gives the species status in the conservancy based on what the conservancy would like to have.

**dark green** (abundant) – reduce a lot;  
**light green** (common) – reduce a little;  
**yellow** (uncommon) – keep numbers the same;  
**light orange** (rare) – double numbers;  
**dark orange** (very rare) – more than double numbers.

### Wildlife status summary in 2019

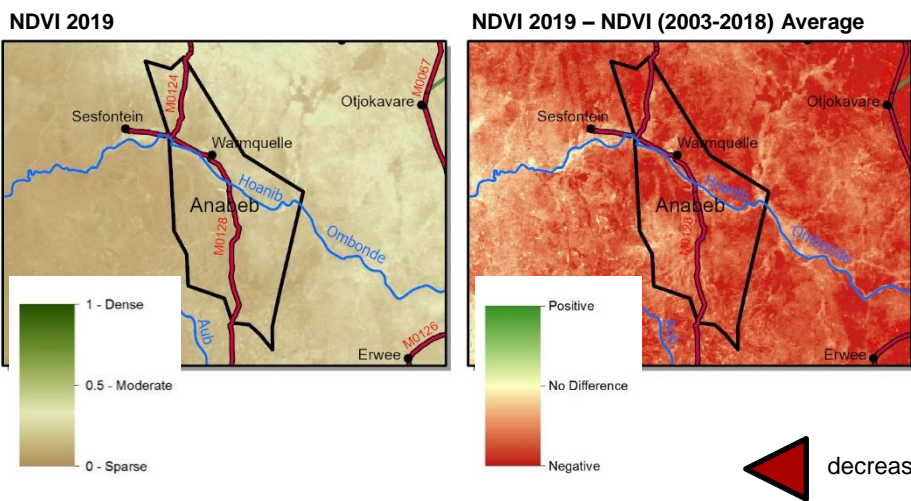


### Key to wildlife status

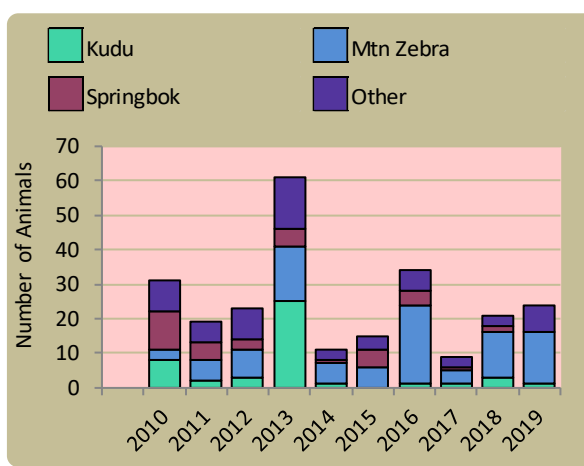


## Vegetation monitoring

Green vegetation index (NDVI). Maps show vegetation cover during Feb-Apr of the current year and the difference between the current year and the long term average (2003-2018)



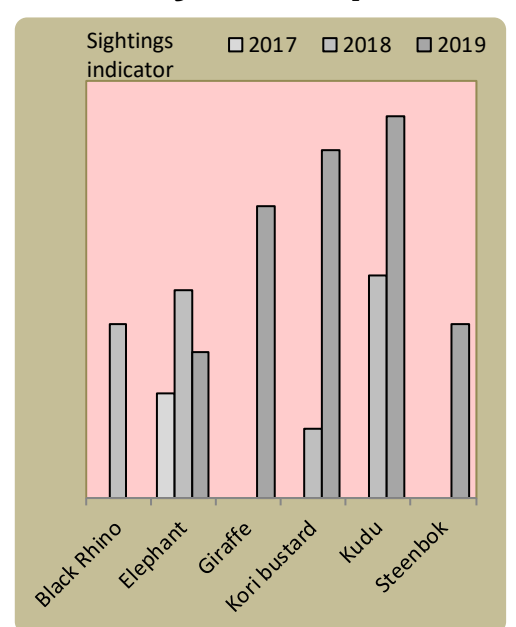
## Wildlife mortalities



### Flags



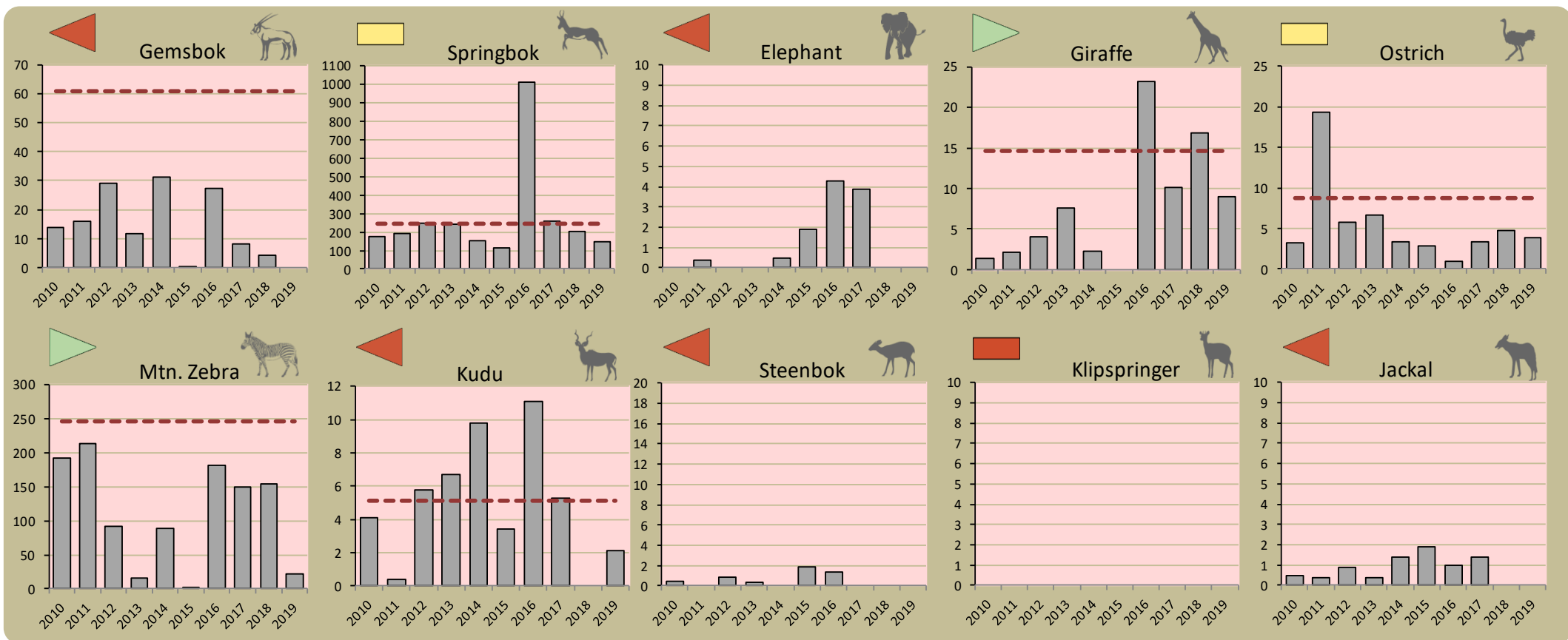
## Locally rare species



**Locally rare species** are not found very often in the conservancy and need special conservation attention.

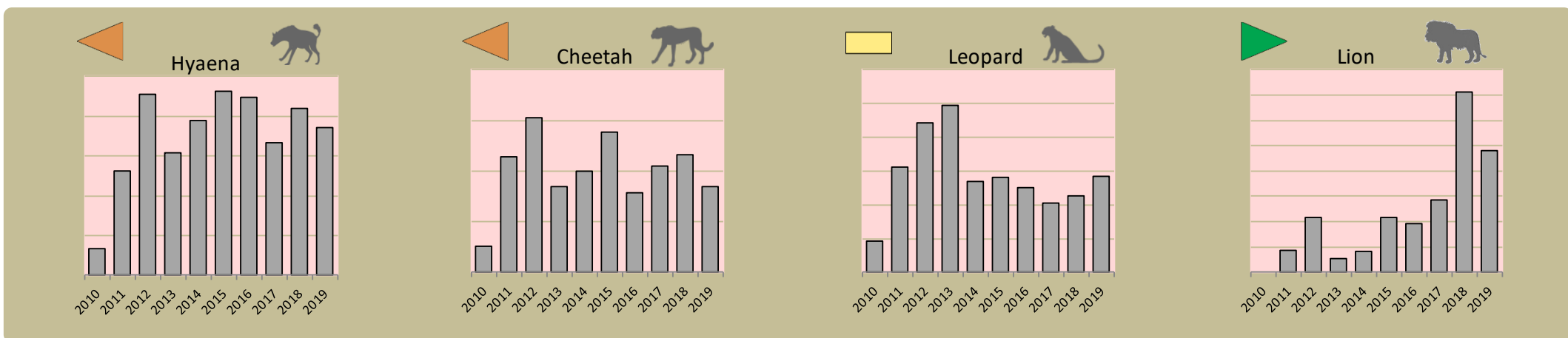
## Annual game count

Charts show the number of animals seen each year per 100 km driven during the game count. As a point of reference the dashed horizontal line represents the combined 10 year average in Palmwag and Etendeka concessions. Status flags reflect the general count trend over the last 5 years.



## Predator monitoring

charts show the average number of animals seen per Event Book each year status barometers reflect the general sightings trend over the last 5 years



Wildlife provides a wide range of benefits. Some wildlife can cause conflicts, but all wildlife is of value to tourism, trophy hunting and a healthy environment.

By using all the available information and adapting and improving activities, threats such as human wildlife conflict, poaching and other issues can be minimised.

### Enabling wise conservancy governance...

#### Conservancy Statistics

Date Registered:	July 2003
Population (2011 census):	1330
Size (square kilometres):	1570
Registered members:	520

#### Key Compliance Requirements

Was an AGM held?	✓
Were elections held?	N/A
Were benefits distributed according to the BDP?	✓
Is game managed according to the GMUP?	✗
Was the financial report presented and approved?	✓

#### Conservancy Governance

	Male	Female	Total
Number of management committee members	7	3	10
Attendance at AGM			
Date of the last AGM:	31/08/2019		
Date of the next AGM:	08/2020		
Other important issues			
Budget approved?	✓		
Work plan approved?	✓		
Annual conservancy report approved?			

#### Benefit Distribution

Type	Description	Beneficiary	Number
Community Devp.	Kindergarten	Children	37
	Water To Households	Households	113
Social Benefits	Funeral Assistance	Households	7
	Hiv Awareness	Households	113
	Scholarships	Students	5
	School Donation		
Meat Distribution	Sports		
	Meat To Members	Households	113
Other Benefits	Hwc Offset		
	Ta Support		

#### Employment

	Male	Female	Total
Conservancy staff (Incl. CGG & CRM)	8		8
Number of Community Game Guards	8		8
Number of Community Resource Monitors			
Lodge staff	26	23	49

#### Governance Performance Rating How well did the conservancy perform in the past year?

Performance Category	This Year	Prev. Year	Explanation of performance category
1 Member engagement	Strong		The conservancy is adequately engaging its members
2a Benefit planning	Exceptional		The conservancy developed its BDP in a transparent and participatory manner
2b Benefit distribution	Strong		The conservancy distributes benefits to its members in a fair, transparent and equitable manner
3 Accountability	Moderate		Conservancy members are holding the management committee accountable
4 Compliance	Moderate		The conservancy is compliant with the standard operating procedures (SOPs)
5 Stakeholder engagement	Moderate		The conservancy maintains relationships with key external stakeholders
6 Financial management	Strong		The conservancy is effectively managing its finances

Colour codes:

none

weak

moderate

strong

exceptional

N/A