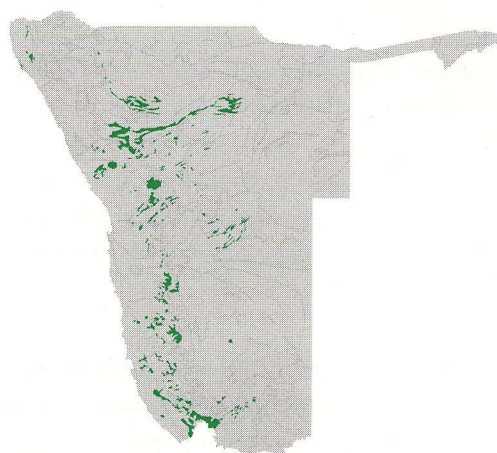


AGRO-ECOLOGICAL ZONE DESCRIPTION

AEZ Code **ROCK**

AEZ Name **Undifferentiated rocky hills and inselberg mountains**

AEZ Area 30 041 km²



Summary of Landform Information

Codes

Landform type	hills and footslopes	[hf]
General altitude range	0 m - 2 000 m	
Regional slope range	>60%	
Relative relief	100 - 300m: high relative relief	
Drainage pattern	strongly oriented, radial	
Geological substrata	Basement complex and Karoo rocks	
SOTER landform	high-gradient hills	[TH]
SOTER lithology	acid igneous	[IA]
	acid metamorphic	[MA]
	clastic sediments	[SC]

Summary of Growing Period Information

Dominant Zone not applicable

Summary of Soils Information - FAO Soils Units and Fertility Capability Classification

Dominant	50 % Lithic Leptosols	very shallow soils, limited in depth by hard rock or cemented material
	50 % Rock	

Agricultural Potential

Ranking not applicable