

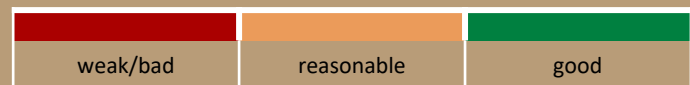
maximising wildlife returns by minimising threats...

Performance Indicators

Management performance in 2019

Category	Performance
1 Adequate staffing	Good
2 Adequate expenditure	Good
3 Audit attendance	Good
4 NR management plan	Good
5 Zonation	Good
6 Leadership	Good
7 Display of material	Good
8 Event Book modules	Good
9 Event Book quality	Good
10 Compliance	Weak/Bad
11 Game census	Weak/Bad
12 Reporting & adaptive management	Good
13 Law enforcement	Weak/Bad
14 Human Wildlife Conflict	Weak/Bad
15 Harvesting management	Weak/Bad
16 Sources of NR income	Good
17 Benefits produced	Weak/Bad
18 Resource trends	Reasonable
19 Resource targets	Weak/Bad

Key to performance indicators



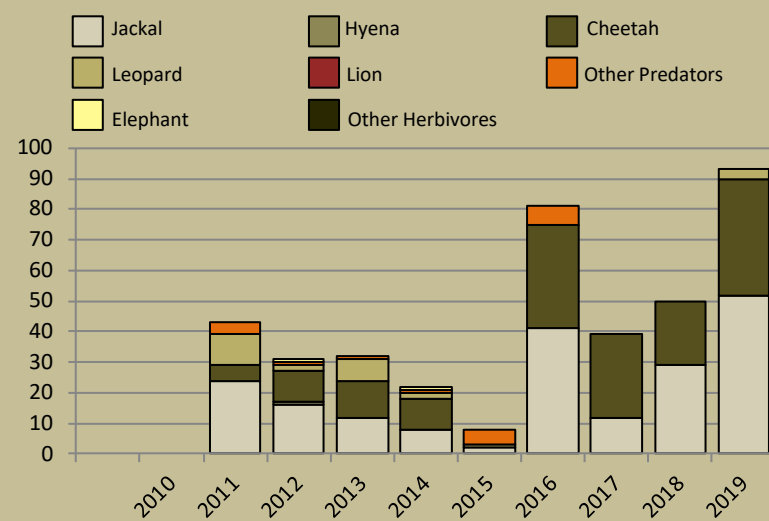
Performance is assessed on a scoring system from zero (none) to a maximum of between 3 and 6 (strong/excellent) depending on the indicator.

Indicators 1-17 reflect the performance of the management team in place in the conservancy and an efficient team can achieve a good rating in all 17 indicators.
Indicators 18 & 19 are influenced by external factors and are not considered a reflection of conservancy management. They indicate the current status of wildlife in the conservancy in relation to a theoretical optimal situation.

Human wildlife conflict

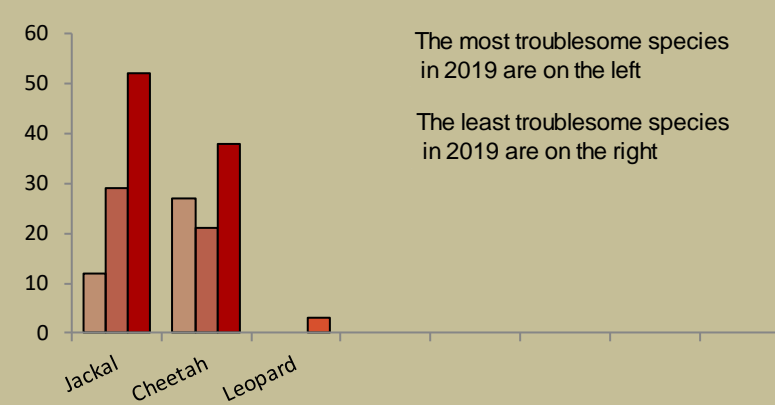
Human wildlife conflict trend

the chart shows the total number of incidents each year, subdivided by species, grouped as herbivores and predators



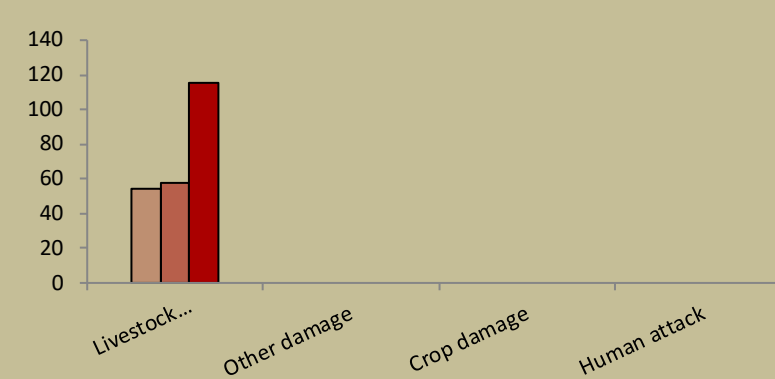
Most troublesome problem animals 2017-2019

the chart shows the number of incidents per species for the last 3 years; the darkest bar (on the right) indicates the current year for each species



Type of damage by problem animals 2017-2019

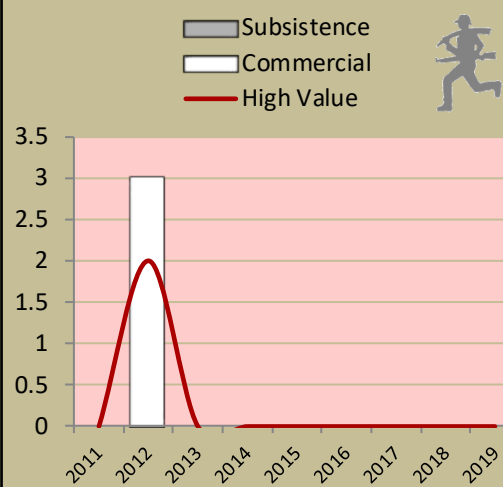
the chart shows the number of incidents per category for the last 3 years; the darkest bar (on the right) indicates the current year for each type



Poaching

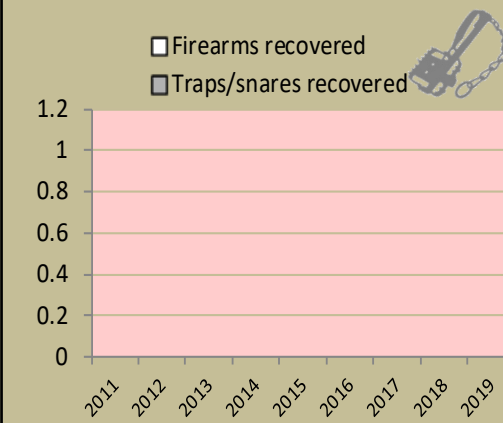
Number of incidents per year

Commercial poaching is a serious threat to conservancy benefits. The chart shows the number of incidents per category



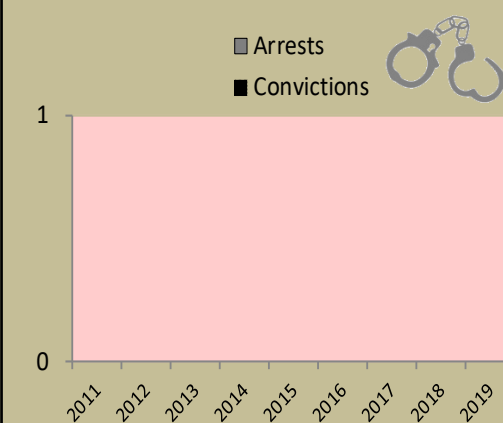
Traps and firearms recovered

number of incidents per category



Arrests and convictions

number of incidents per category



Wildlife removals – quota use and value

Potential value estimates (N\$) for species are based on:

- **Potential trophy value** - the average trophy value for that species in the conservancy landscape
- trophy values vary depending on trophy quality, international recognition of the hunting operator and the hunting area
- **Potential other use value** - the average meat value for common species
- or
- the average live sale value of each high value species (indicated with an *). High value species are never used for meat
- Fractions of animals indicate that a quota of 1 animal was awarded with conditions i.e.
 - over a period of several years and/or
 - is shared with other conservancies

Species	Quota 2019			Animals actually used in 2019						Potential Trophy Value N\$	Potential Other use Value N\$
	Total	Trophy	Other Use	Trophy	Own Use & Premium	Shoot & Sell	Capture & Sale	Problem Animal	Total Use		

monitoring numbers and trends for a healthy conservancy...

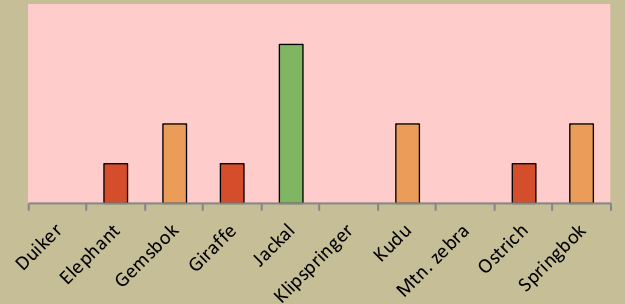
Current wildlife numbers and status

Species	Animals Seen 2019	Estimated population range	Wildlife Status		
			Count Trend	National Guideline	Desired Status
Duiker				Yellow	
Elephant				Dark Orange	
Gemsbok				Orange	
Giraffe				Dark Orange	
Jackal				Green	
Klipspringer					
Kudu				Orange	
Mtn. zebra					
Ostrich				Dark Orange	
Springbok				Orange	

Desired Number – gives the species status in the conservancy based on what the conservancy would like to have.

dark green (abundant) – reduce a lot;
light green (common) – reduce a little;
yellow (uncommon) – keep numbers the same;
light orange (rare) – double numbers;
dark orange (very rare) – more than double numbers.

Wildlife status summary in 2019



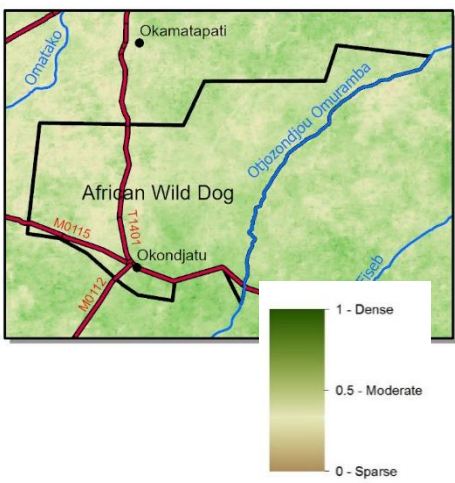
Key to wildlife status



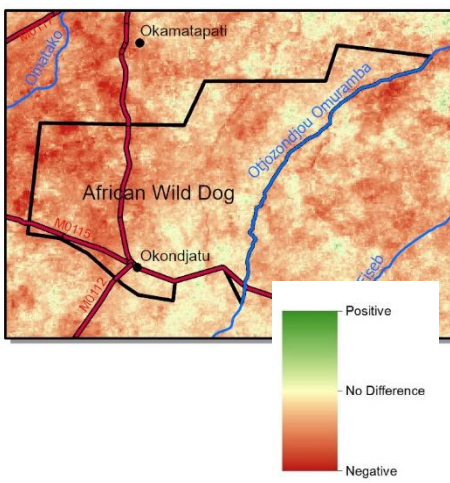
Vegetation monitoring

Green vegetation index (NDVI). Maps show vegetation cover during Feb-Apr of the current year and the difference between the current year and the long-term average (2003-2018)

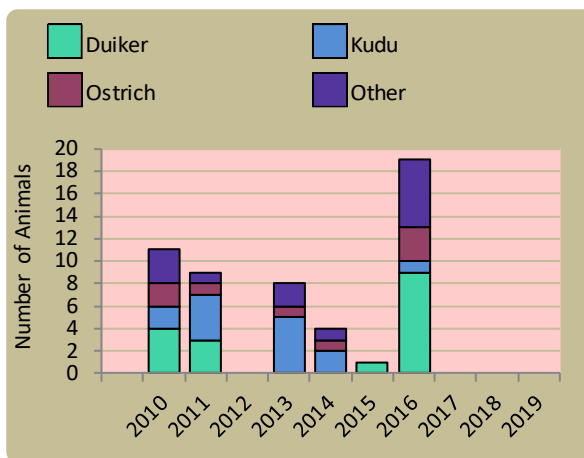
NDVI 2019



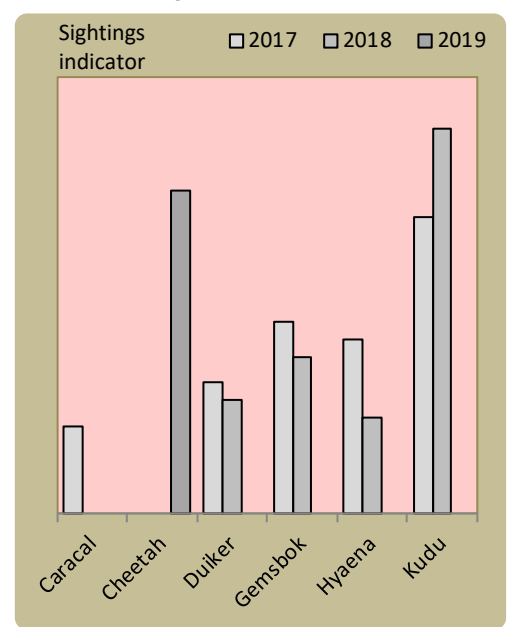
NDVI 2019 – NDVI (2003-2018) Average



Wildlife mortalities



Locally rare species



Locally rare species are not found very often in the conservancy and need special conservation attention.

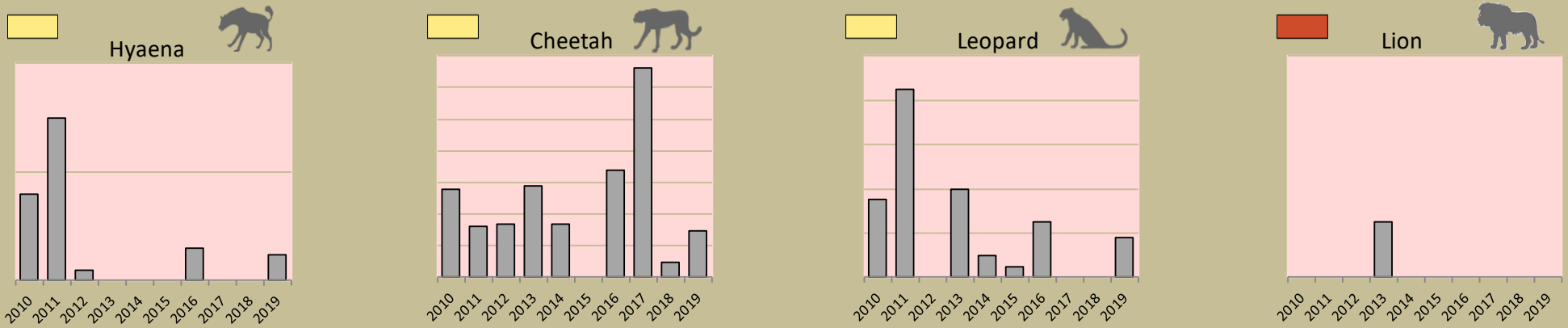
Flags



Annual game count – not undertaken in the east

Predator monitoring

charts show the average number of animals seen per Event Book each year status barometers reflect the general sightings trend over the last 5 years



Wildlife provides a wide range of benefits. Some wildlife can cause conflicts, but all wildlife is of value to tourism, trophy hunting and a healthy environment.

By using all the available information and adapting and improving activities, threats such as human wildlife conflict, poaching and other issues can be minimised.

Enabling wise conservancy governance...

Conservancy Statistics

Date Registered:	September 2005
Population (2011 census):	4370
Size (square kilometres):	3824
Registered members:	500

Key Compliance Requirements

Was an AGM held?	✓
Were elections held?	N/A
Were benefits distributed according to the BDP?	✓
Is game managed according to the GMUP?	✓
Was the financial report presented and approved?	✓

Conservancy Governance

	Male	Female	Total
Number of management committee members	8	2	10
Attendance at AGM	60	50	110
Date of the last AGM:	30/11/2019		
Date of the next AGM:	11/2020		
Other important issues			
Budget approved?	✓		
Work plan approved?	✓		
Annual conservancy report approved?			

Benefit Distribution

Type	Description	Beneficiary	Number
Community Devp.	Bush To Feed Animals	Households	20

Employment

	Male	Female	Total
Conservancy staff (Incl. CGG & CRM)	5	1	6
Number of Community Game Guards	4	1	5
Number of Community Resource Monitors			

Governance Performance Rating How well did the conservancy perform in the past year?

Performance Category	This Year	Prev. Year	Explanation of performance category
1 Member engagement	moderate		The conservancy is adequately engaging its members
2a Benefit planning	strong		The conservancy developed its BDP in a transparent and participatory manner
2b Benefit distribution	weak		The conservancy distributes benefits to its members in a fair, transparent and equitable manner
3 Accountability	moderate		Conservancy members are holding the management committee accountable
4 Compliance	strong		The conservancy is compliant with the standard operating procedures (SOPs)
5 Stakeholder engagement	weak		The conservancy maintains relationships with key external stakeholders
6 Financial management	moderate		The conservancy is effectively managing its finances

Colour codes:

none

weak

moderate

strong

exceptional

N/A