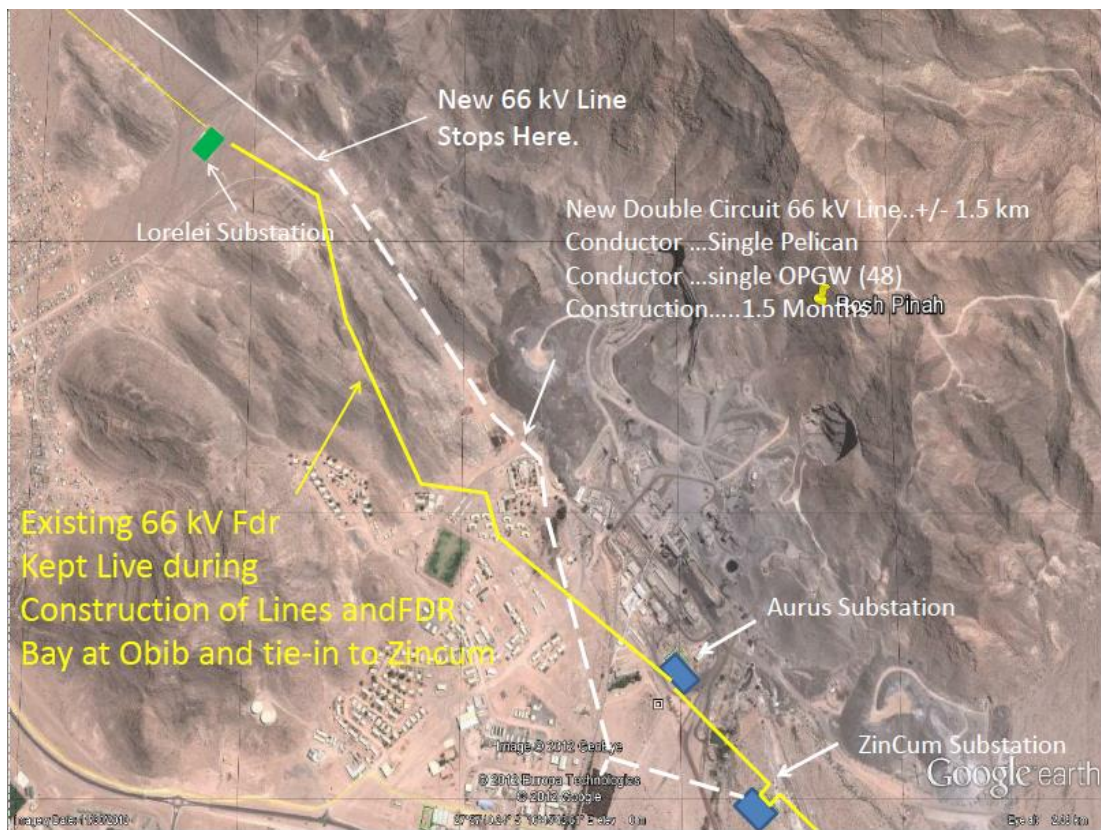


**Project Site Area (map) with clear coordinates**



**Alignment of proposed new 66 kV power line from Obib to Lorelei substation.**



**Alignment of the proposed 66 kV power line from Lorelei to Zincum substation.**

## **Coordinates of main Substations**

Zincum Station: 27.960833 (lat) 16.76722 (long)

Aurus Station: 27.957222 and 16.765

Lorelei Station: 27.9461 and 16.75277

Obib Station: 27.844722 and 16.64444