

Fig. 1. Google maps showing the location of mining claims (70515 & 70516).

Table 1: Coordinate demarcation boundary for MC 70515 & 70516.

Mining claim 70515			Mining claim 70516		
No.	Latitude	Longitude	No.	Latitude	Longitude
1	21° 26' 34.71" S	14° 43' 24.15" E	1	21° 26' 35.02" S	14° 43' 45.78" E
2	21° 26' 35.02" S	14° 43' 45.78" E	2	21° 26' 42.20" S	14° 44' 03.95" E
3	21° 26' 44.49" S	14° 43' 44.74" E	3	21° 26' 51.53" S	14° 44' 03.81" E
4	21° 26' 43.77" S	14° 43' 25.70" E	4	21° 26' 44.49" S	14° 43' 44.74" E
Total Area: 16.6606 Ha			Total Area: 15.8598 Ha		

Centre point for two claims: (21°26'40.26" S , 14°43'45.28"E) (-21.444517°; 14.729244°)

Project area total size: 32.52 Hectares.

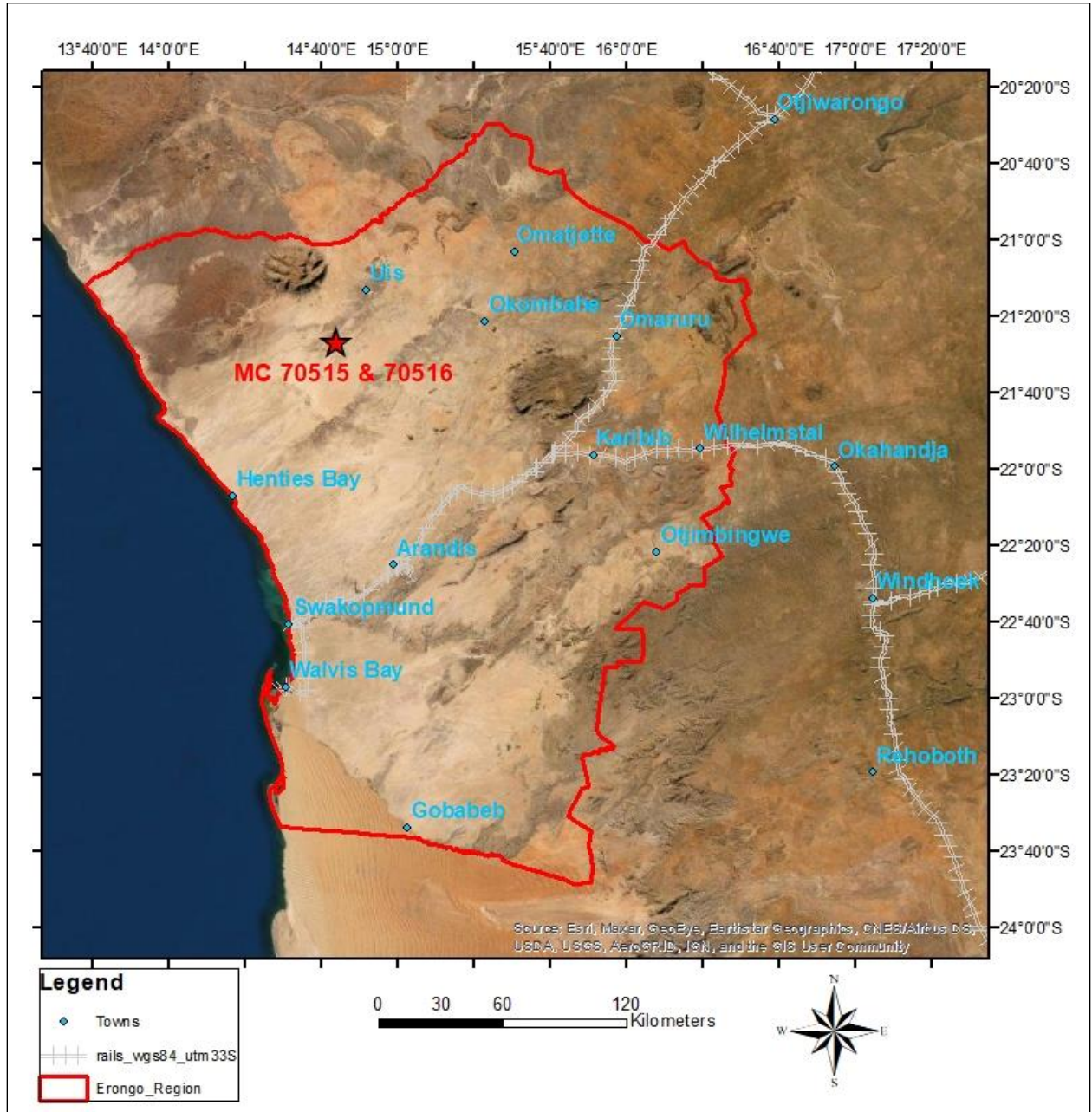


Fig. 2. Location of mining claims (70515 & 70516), Okombahe reserve, Dâures constituency, Erongo Region, Namibia.