

**ENVIRONMENTAL SCOPING ASSESSMENT (ESA) FOR NUCLEAR
FUEL MINERALS ON EXCLUSIVE PROSPECTING LICENCE (EPL) No.
7011 LOCATED SOUTH-EAST OF ARANDIS, ERONGO REGION**

ENVIRONMENTAL ASSESSMENT – FINAL

ECC REFERENCE No.: APP- 00792

<p>Author(s): Ms. Aili lipinge and Mr. Silas David</p> <p>Reviewer: Ms. Rose Mtuleni</p> <p>Company: Excel Dynamic Solutions (Pty) Ltd</p> <p>Telephone: +264 (0) 61 259 530</p> <p>Fax2email: +264 (0) 886 560 836</p> <p>Email: public@edsnamibia.com</p>	<p>Client: PennyWort Investments (Pty) Ltd</p> <p>Contact person: Mr. King Frans Indongo</p> <p>Cellphone: +264 (0) 81 285 1242</p> <p>Email: king.frans.indongo@gmail.com</p>
---	---

EXECUTIVE SUMMARY

PennyWort Investments (Pty) Ltd (herein referred to as the Proponent), has been granted with an Exclusive Prospecting Licence (EPL) No. 7011 by the Ministry of Mines and Energy (MME). The tenure of the EPL is from 12 August 2020 to 14 August 2023. The EPL 7011 is located about 8 km southeast of Arandis, within the //Gaingu Conservancy; and covers a surface area of 2 613.1823 ha. Furthermore, EPL No. 7011 is located within the Accessory Work Area (AWA) of Mining Licence (ML) No. 28, owned by Rossing Uranium Ltd (RUL). The AWA 15 C which is covered by EPL 7011 was granted on the 12th December 1994 by MME, and is operational to date and retains the right to establish accessory works for RUL as per the Minerals (Prospective and Mining) Act, 1992.

The Proponent intends to conduct prospecting and exploration activities for Nuclear Fuel Minerals as a commodity of interest, on the EPL.

According to Section 27 (1) of the Environmental Management Act (EMA), No. 7 of 2007, the proposed prospecting and exploration activities are among listed activities that may not be undertaken without an ECC under the Environmental Impact Assessment (EIA) Regulations. Subsequently, to ensure that the proposed activity is compliant with the national environmental legislation, the Proponent, appointed an independent environmental consultant, Excel Dynamic Solutions (Pty) Ltd to undertake the required Environmental Assessment (EA) process and apply for the ECC on their behalf.

The application for the ECC was compiled and submitted to the Ministry of Environment, Forestry & Tourism (MEFT) on the 8th of August 2022, as a custodian for project registration. Upon submission of an Environmental Scoping Assessment (ESA) Report and Draft Environmental Management Plan (EMP), an ECC for the proposed project may be considered by the Environmental Commissioner at the MEFT's Department of Environmental Affairs and Forestry (DEAF).

Brief Project Description

Planned Activities: Planned Activities: Proposed Exploration

The Proponent intends to adopt a systematic prospecting and exploration approach of the following:

1. Non-invasive Technique:

- **Desktop Study: Geological mapping:** This includes the review of geological maps of the area and on-site ground traverses and observations and an update where relevant, of the information obtained during previous geological studies of the area.
- **Lithology geochemical surveys:** Rock and soil samples may be collected and taken for analytical chemistry laboratories to determine the target commodity content. Soil samples consist of small pits ($\pm 20\text{cm} \times 20\text{cm} \times 30\text{cm}$) where 1kg samples can be extracted and sieved to collect 50g of material for submission to a laboratory.
- **Geophysical surveys:** This will entail data collection of the substrata (in most cases service of a ground geophysical contractor will be sourced), using sensors such as radar, magnetic and electromagnetic techniques to detect underground mineralization. Ground geophysical surveys be conducted by geophysical technicians with handheld instruments.

The Proponent, is therefore, required to ensure that RUL is consulted before the prospecting phase commences, and should ensure that a written consent to conduct prospecting works within RUL's AWA is obtained, and the conditions attached to the consent is adhered too.

2. Invasive Technique

- **Detailed Exploration Drilling:** Should the soil and/or the geophysical results be positive, drilling activities will commence and drill samples will be collected for further analysis. This will determine the grade and volume of the potential mineralization. Two widely used drilling options may be adopted, these are the Reverse Circulation (RC) drilling and/or diamond-core drilling. RC drilling uses a pneumatic hammer, which drives a rotating tungsten-steel bit. The technique produces an uncontaminated large volume sample, comprised of rock chips. It is relatively quicker and cheaper when compared to other techniques like Diamond Drilling. However, diamond drilling may also be considered for this exploration programme, during advanced stages of exploration if large amounts of sample material may be required for analysis and to perform processing trials.

The drilling site will consist of a drill-rig, drill core and geological samples store and a drill equipment parking and maintenance yard (including a fuel and lubricants storage facility).

The Proponent is required to ensure that RUL is consulted before any exploration work commences within the EPL and the mitigation measures stipulated in the Environmental Management Plan (EMP), and the No-go Zone areas outlined for this project is adhered to.

No blasting is planned for this phase.

Public Consultation

Regulation 21 of the EIA Regulations details the steps to be taken during a public consultation process and these have been used in guiding this process. The public consultation process assisted the Environmental Consultant in identifying all potential impacts and aided in the process of identifying possible mitigation measures and alternatives to certain project activities. The communication with I&APs about the proposed prospecting and exploration activities was done through the following means and in this order to ensure that the public is notified and are provided an opportunity to comment on the proposed project:

- A Background Information Document (BID) containing brief information about the proposed facility was compiled and emailed to relevant Authoritative Ministries, and upon request to all new registered Interested and Affected Parties (I&APs).
- Project Environmental Assessment notices were published in the Namibian and New Era Newspapers for two consecutive weeks (8th and 15th August 2022), briefly explaining the activity and its locality, inviting members of the public to register as I&APs and submit their comments/concerns.
- A consultation meeting was scheduled and held with interested parties on the 8th of September 2022 at Arandis Town Council.
- A 2nd consultation meeting was scheduled and held with the technical and management team of RUL on 03rd October 2022 in Arandis.
- The issue and concerns raised during the meetings and site visit assessment/observation, have formed the basis for the ESA Report and EMP.

Potential Impacts identified

The following potential impacts are anticipated:

- **Positive impacts:** Socio-economic development through employment creation (primary, secondary, and tertiary employment) and skills transfer; opens up other investment opportunities and infrastructure-related development benefits; produces a trained workforce and small businesses that can service communities and may initiate related businesses; boosts the local economic growth and regional economic development and; increased support for local businesses through the procurement of consumable items such as Personal Protective Equipment (PPE), machinery spare parts, lubricants, etc.
- **Negative impacts:** Physical land/soil disturbance; Impact on local biodiversity (fauna and flora); habitat disturbance and potential illegal hunting of wildlife in the area; potential impact on water resources (specifically ground water) and soils particularly due to pollution; air quality issue: potential dust generated from the project; potential occupational health and safety risks, vehicular traffic safety and impact on services infrastructure such as local roads, vibrations and noise associated with drilling activities may be a nuisance to locals; environmental pollution (solid waste and wastewater), archaeological and heritage impact and potential social nuisance and conflicts (increase human activity in the area posing exposure to theft & damage of critical infrastructure within the RUL AWA ; this includes pumps , copper wire & pipelines).

The potential negative impacts were assessed, and mitigation measures were provided accordingly.

CONCLUSIONS AND RECOMMENDATIONS

Conclusions

The potential impacts that are anticipated from the proposed project activities were identified, described, and assessed. For the significant adverse (negative) impacts with medium project-related rating, appropriate management and mitigation measures were recommended for implementation by the Proponent, and all project-related employees.

The public was consulted as required by the EMA and its 2012 EIA Regulations (Section 21 to 24). This was done via the two newspapers (New Era and The Namibian) used for this

environmental assessment. A consultation through face-to-face meeting with I&APs at Arandis Town Hall and at Rossing Uranium Ltd (RUL) induction office was conducted, whereby the I&APs raised comments and concerns on the proposed project activities.

The issues and concerns received on the 08th of September 2022 and on the 03rd October 2022 together with the site visit assessment which was conducted on the 08 September 2022 and 03 October 2022 formed the basis of this Report and the Draft EMP. The issues raised were addressed and incorporated into this Report whereby mitigation measures have been provided thereof to avoid and/or minimize their significance on the environmental and social components. Most of the potential impacts were found to be of medium rating significance. With the effective implementation the recommended management and mitigation measures, this will particularly see the reduction in the significance of adverse impacts that cannot be avoided completely (from medium rating to low). To maintain the desirable rating, the implementation of management and mitigation measures should be monitored by the Proponent. The monitoring of this implementation will not only be done to reduce the impacts' rating or maintain low rating but also to ensure that all potential impacts identified in this study and other impacts that might arise during the implementation are properly identified in time and addressed right away too.

It is vital for the Proponent and their contractors to effectively implement the recommended management and mitigation measures to protect both the biophysical and social environment throughout the project duration. All these would be done with the aim of promoting environmental sustainability while ensuring a smooth and harmonious existence and purpose of the project activities in the community and environment at large. However, if an ECC is to be issued, the ECC should be issued on a condition that the provided management measures and action plans are effectively implemented on site and monitored. Most importantly, monitoring of the environmental components described in the impact assessment chapter should be conducted by the Proponent and applicable Competent Authority. This is to ensure that all potential impacts identified in this study and other impacts that might arise during the exploration are properly identified in time and addressed. Lastly, should the ECC be issued, the Proponent will be expected to be compliant with the ECC conditions as well as legal requirements governing the mineral exploration and related activities, including;

- Furnishing the MEFT and MME with an environmental report every six (6) months
- Carrying out and submission of an annual Environmental Audit to the MEFT and MME

Recommendations

The Environmental Consultant is confident that the potential negative impacts associated with the proposed project activities can be managed and mitigated by the effective implementation of the recommended management and mitigation measures and with more effort and commitment put on monitoring the implementation of these measures.

It is therefore, recommended that the proposed prospecting and exploration activities be granted an ECC, and provided that:

- All the management and mitigation measures provided herein are effectively and progressively implemented.
- All required permits, Licenses and approvals for the proposed activities should be obtained as required. These include permits and Licenses for land use access agreements to prospect and explore and ensuring compliance with these specific legal requirements.
- The Proponent and all their project workers or contractors comply with the legal requirements governing their project and its associated activities and ensure that project permits and or approvals required to undertake specific site activities are obtained and renewed as stipulated by the issuing authorities.
- Site areas where exploration activities have ceased are rehabilitated, as far as practicable, to their pre-exploration state.
- Environmental Compliance monitoring reports should be compiled and submitted to the DEAF (MEFT / DEAF).

Disclaimer

EDS warrants that the findings and conclusion contained herein were accomplished in accordance with the methodologies set forth in the Scope of Work and Environmental Management Act (EMA) of 2007. These methodologies are described as representing good customary practice for conducting an Environmental Impact Assessment of a property for the purpose of identifying recognized environmental conditions. There is a possibility that even with the proper application of these methodologies there may exist on the subject property conditions that could not be identified within the scope of the assessment, or which were not reasonably identifiable from the available information. The Consultant believes that the information obtained from the record review and during the public consultation processes concerning the proposed

exploration work is reliable. However, the Consultant cannot and does not warrant or guarantee that the information provided by the other sources is accurate or complete. The conclusions and findings set forth in this report are strictly limited in time and scope to the date of the evaluations. No other warranties are implied or expressed.

Some of the information provided in this report is based upon personal interviews, and research of available documents, records, and maps held by the appropriate government and private agencies. This report is subject to the limitations of historical documentation, availability, and accuracy of pertinent records, and the personal recollections of those persons contacted.

TABLE OF CONTENTS

EXECUTIVE SUMMARY	ii
LIST OF FIGURES.....	xi
LIST OF TABLES.....	xii
LIST OF APPENDICES.....	xiii
LIST OF ABBREVIATIONS	xiii
1. INTRODUCTION.....	18
1.1 Project Background.....	18
1.2 Terms of Reference, Scope of Works and Appointed Environmental Assessment Practitioner	21
1.3 Motivation for the Proposed Project	21
1.4 Namib Ecology Integrity	22
2. PROJECT DESCRIPTION: PROPOSED EXPLORATION ACTIVITY	24
2.1 Prospecting Phase	24
2.2 Exploration (Drilling, Sampling and Analysis) Phase.....	25
2.2.1 Detailed Exploration Drilling.....	25
2.4 Decommissioning and Rehabilitation Phase.....	29
3. PROJECT ALTERNATIVES.....	31
3.1 Types of Alternatives Considered.....	31
3.1.1 The "No-go" Alternative	31
3.1.2 Exploration Location	32
3.1.3 Exploration Methods	33
4. LEGAL FRAMEWORK: LEGISLATION, POLICIES AND GUIDELINES	34
4.1 The Environmental Management Act (No. 7 of 2007).....	34

5.	ENVIRONMENTAL BASELINE.....	47
5.1	Biophysical Environment.....	47
	Climate.....	47
5.1	Topography.....	50
5.2	Geology and Soil.....	51
5.3	Hydrology and Water Resources.....	53
5.4	Flora and Fauna.....	55
5.5	Heritage and Archaeology.....	57
5.6	Surrounding Land Uses.....	59
5.7	Socio-economic condition.....	63
6.	PUBLIC CONSULTATION PROCESS.....	65
6.1	Pre-identified and Registered Interested and Affected Parties (I&APs).....	65
6.2	Communication with I&APs.....	66
7.	IMPACT IDENTIFICATION, ASSESSMENT AND MITIGATION MEASURES.....	70
7.1	Impact Identification.....	70
7.2	Impact Assessment Methodology.....	71
7.2.1	Extent (spatial scale).....	71
7.2.2	Duration.....	72
7.2.3	Intensity, Magnitude / severity.....	72
7.2.4	Probability of occurrence.....	73
7.2.5	Significance.....	74
7.3	Assessment of Potential Negative Impacts.....	76
7.3.1	Land Degradation and Loss of Biodiversity.....	76
7.3.2	Generation of Dust (Air Quality).....	78
7.3.3	Water Usage.....	79

7.3.4	Soil and Water Resources Pollution.....	80
7.3.5	Waste Generation	82
7.3.6	Occupational Health and Safety Risks.....	83
7.3.7	Vehicular Traffic Use and Safety	85
7.3.8	Noise and vibrations	87
7.3.9	Disturbance to Archaeological and Heritage resources	88
7.3.10	Social Nuisance: Local Property intrusion and Disturbance or Damage.....	90
7.4	Cumulative Impacts Associated with Proposed Exploration.....	91
7.5	Mitigations and Recommendations for Rehabilitation	92
8.	CONCLUSIONS AND RECOMMENDATIONS	93
8.1	Conclusion.....	93
8.2	Recommendations	93
9.	REFERENCES	95

LIST OF FIGURES

Figure 1:	Locality map for EPL No. 7011 located near Arandis, Erongo Region	19
Figure 2:	EPL No. 7011 located within the AWA for ML 28.....	20
Figure 3:	Status and location of the EPL on the MME mining cadastre	33
Figure 4:	Shows the direction around the project area (source: Gunhild, 2015).....	49
Figure 5 (a):	Topography of project area.....	50
Figure 6:	A map of the general geology of the project area	52
Figure 7:	Shows the dominant soil types found within the EPL.....	53
Figure 8:	Surface hydrology, aquifers, and ground vulnerability around the EPL.....	54
Figure 9:	shows the water resources for within the EPL 7011.....	55
Figure 10:	Types of typical vegetation type found within EPL 7011.....	56
Figure 11:	EPL 7011 Land Use Map.....	60
Figure 12:	RUL Land use overlaid by EPL 7011	61

Figure 13: Shows the alternative areas for exploration activities within EPL 7011..... 63
 Figure 14: Public notices placed at the Arandis Town Hall, Erongo Region..... 67
 Figure 15: Public meeting held at Arandis Town Council Hall 68

LIST OF TABLES

Table 1: Shows chemical anticipated to be used during drilling activities..... 26
 Table 2: Applicable local, national and international standards, policies and guidelines governing the proposed development..... 34
 Table 3: International Policies, Principles, Standards, Treaties and Convention applicable to the project 41
 Table 4: Identified archaeological significances within EPL 7011 57
 Table 5: Summary of Interested and Affected Parties (I&APs) 65
 Table 6: Summary of main issues and comments received during the public meeting 68
 Table 7: Extent or spatial impact rating 71
 Table 8: Duration impact rating..... 72
 Table 9: Intensity, magnitude or severity impact rating 72
 Table 10: Probability of occurrence impact rating..... 73
 Table 11: Significance rating scale..... 74
 Table 12: Assessment of the impacts of exploration on biodiversity 77
 Table 13: Assessment of the impacts of exploration on air quality 78
 Table 14: Assessment of the project impact on water resource use and availability 79
 Table 15: Assessment of the project impact on soils and water resources (pollution)..... 80
 Table 16: Assessment of waste generation impact 82
 Table 17: Assessment of the impacts of exploration on health and safety 84
 Table 18: Assessment of the impacts of exploration on road use (vehicular traffic) 86
 Table 19: Assessment of the impacts of noise and vibrations from exploration 87
 Table 20: Assessment of the impacts of exploration on archaeological & heritage resources.... 88
 Table 22: Assessment of social impact of community property damage or disturbance 90

LIST OF APPENDICES

Appendix A: Copy of the Environmental Clearance Certificate (ECC) Application Form 1

Appendix B: Draft Environmental Management Plan (EMP)

Appendix C: Curricula Vitae (CV) for the Environmental Assessment Practitioners (EAPs)

Appendix D: Proof of public consultation (Newspaper adverts, meeting minutes and attendance register)

Appendix E: Comments from Interested and affected parties received via email

Appendix F: Archaeology consent letter

Appendix G: Proof of EPL transfer for EPL 7011

LIST OF ABBREVIATIONS

Abbreviation	Meaning
AMSL	Above Mean Sea Level
BID	Background Information Document
CV	Curriculum Vitae
DEA	Department of Environmental Affairs
EA	Environmental Assessment
EAP	Environmental Assessment Practitioner
ECC	Environmental Clearance Certificate
EDS	Excel Dynamic Solutions
ESA	Environmental Scoping Assessment
EMA	Environmental Management Act
EMP	Environmental Management Plan

EPL	Exclusive Prospecting Licence
GG	Government Gazette
GN	Government Notice
I&APs	Interested and Affected Parties
MEFT	Ministry of Environment, Forestry and Tourism
MME	Ministry of Mines and Energy
PPE	Personal Protective Equipment
Reg	Regulation
S	Section
TOR	Terms of Reference
RUL	Rossing Uranium Ltd
AWA	Accessory Works Area

DEFINITION OF TERMS

Alternative	A possible course of action, in place of another that would meet the same purpose and need of the proposal.
Baseline	Work done to collect and interpret information on the condition/trends of the existing environment.
Biophysical	That part of the environment that does not originate with human activities (e.g. biological, physical and chemical processes).
Cumulative Impacts/Effects Assessment	In relation to an activity, means the impact of an activity that in it may not be significant but may become significant when added to the existing and potential impacts eventuating from similar or diverse activities or undertakings in the area.

Decision-maker	The person(s) entrusted with the responsibility for allocating resources or granting approval to a proposal.
Ecological Processes	Processes which play an essential part in maintaining ecosystem integrity. Four fundamental ecological processes are the cycling of water, the cycling of nutrients, the flow of energy and biological diversity (as an expression of evolution).
Environment	As defined in Environmental Management Act - the complex of natural and anthropogenic factors and elements that are mutually interrelated and affect the ecological equilibrium and the quality of life, including – (a) the natural environment that is land, water and air; all organic and inorganic matter and living organisms and (b) the human environment that is the landscape and natural, cultural, historical, aesthetic, economic and social heritage and values.
Environmental Management Plan	As defined in the EIA Regulations (Section 8(j)), a plan that describes how activities that may have significant environments effects are to be mitigated, controlled and monitored.
Exclusive Prospecting Licence	Is a Licences that confers exclusive mineral prospecting rights over land of up to 1000 km ² in size for an initial period of three years, renewable twice for a maximum of two years at a time.

Interested and Affected Party (I&AP)	In relation to the assessment of a listed activity includes - (a) any person, group of persons or organization interested in or affected by an activity; and (b) any organ of state that may have jurisdiction over any aspect of the activity. Mitigate - practical measures to reduce adverse impacts. Proponent – as defined in the Environmental Management Act, a person who proposes to undertake a listed activity. Significant impact - means an impact that by its magnitude, duration, intensity or probability of occurrence may have a notable effect on one or more aspects of the environment.
Fauna	All of the animals found in a given area.
Flora	All of the plants found in a given area.
Mitigation	The purposeful implementation of decisions or activities that are designed to reduce the undesirable impacts of a proposed action on the affected environment.
Monitoring	Activity involving repeated observation, according to a pre-determined schedule, of one or more elements of the environment to detect their characteristics (status and trends).
Nomadic Pastoralism	Nomadic pastoralists live in societies in which the husbandry of grazing animals is viewed as an ideal way of making a living and the regular movement of all or part of the society is considered a normal and natural part of life. Pastoral nomadism is commonly found where climatic conditions produce seasonal pastures but cannot support sustained agriculture.
Proponent	Organization (private or public sector) or individual intending to implement a development proposal.
Public Consultation/Involvement	A range of techniques that can be used to inform, consult or interact with stakeholders affected by the proposed activities.
Protected Area	Refers to a protected area that is proclaimed in the Government Gazette

	according to the Nature Conservation Ordinance number 4 of 1975, as amended
Scoping	An early and open activity to identify the impacts that are most likely to be significant and require specialized investigation during the EIA work. Can, also be used to identify alternative project designs/sites to be assessed, obtain local knowledge of site and surroundings and prepare a plan for public involvement. The results of scoping are frequently used to prepare a Terms of Reference for the specialized input into full EIA.
Terms of Reference (ToR)	Written requirements governing full EIA input and implementation, consultations to be held, data to be produced and form/contents of the EIA report. Often produced as an output from scoping.

1. INTRODUCTION

1.1 Project Background

PennyWort Investments (Pty) Ltd (herein referred to as the Proponent), has been granted with an Exclusive Prospecting Licence (EPL) No. 7011 by the Ministry of Mines and Energy (MME). The EPL is valid between 12 August 2020 and 14 August 2023. EPL 7011 is located about 8 km southeast of Arandis (**Figure 1**), within the //Gaingu Conservancy, and it covers a surface area of 2 613.1823 ha.

The EPL No. 7011 is located within the Accessory Works Area (AWA) for Mining Licence (ML) No. 28 (**Figure 2**), owned by Rossing Uranium Ltd (RUL). The AWA 15 C which covers EPL 7011 was granted on the 12th December 1994 which is still operational to date and retains the right to establish accessory works for RUL as per the Minerals (Prospective and Mining) Act, 1992.

The Proponent intends conduct prospecting and exploration activities for Nuclear Fuel Minerals as a commodity of interest on the EPL.

Section 27 (1) of the Environmental Management Act (EMA) (No. 7 of 2007) and its 2012 Environmental Impact Assessment (EIA) Regulations, provides a list of activities that may not be carried out without an Environmental Impact Assessment (EIA) undertaken and an Environmental Clearance Certificate (ECC) obtained. Prospecting and exploration activities are listed among activities that may not occur without an ECC. Therefore, individuals or organizations may not carry out exploration activities without an EIA undertaken and an ECC awarded.

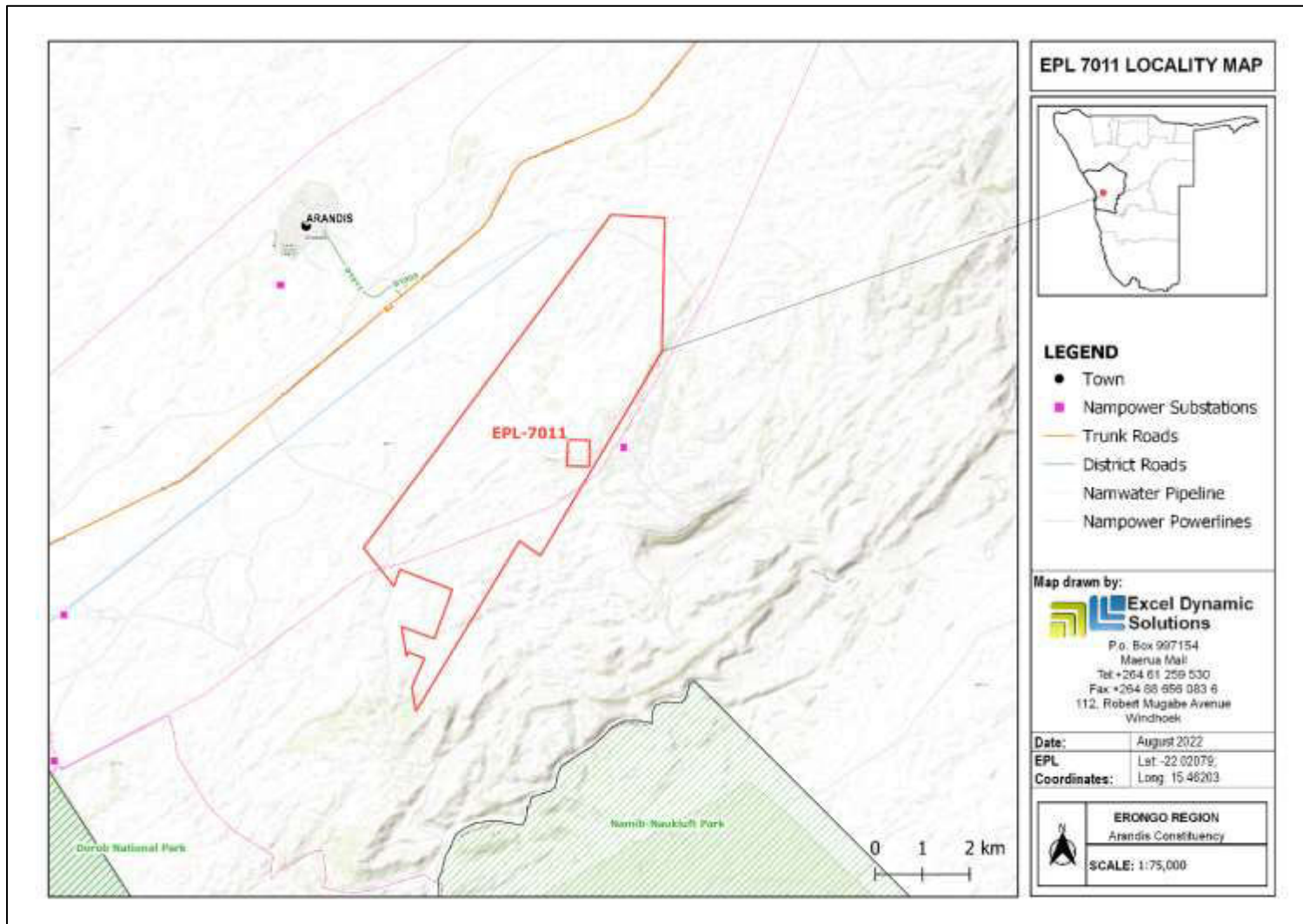


Figure 1: Locality map for EPL No. 7011 located near Arandis, Erongo Region

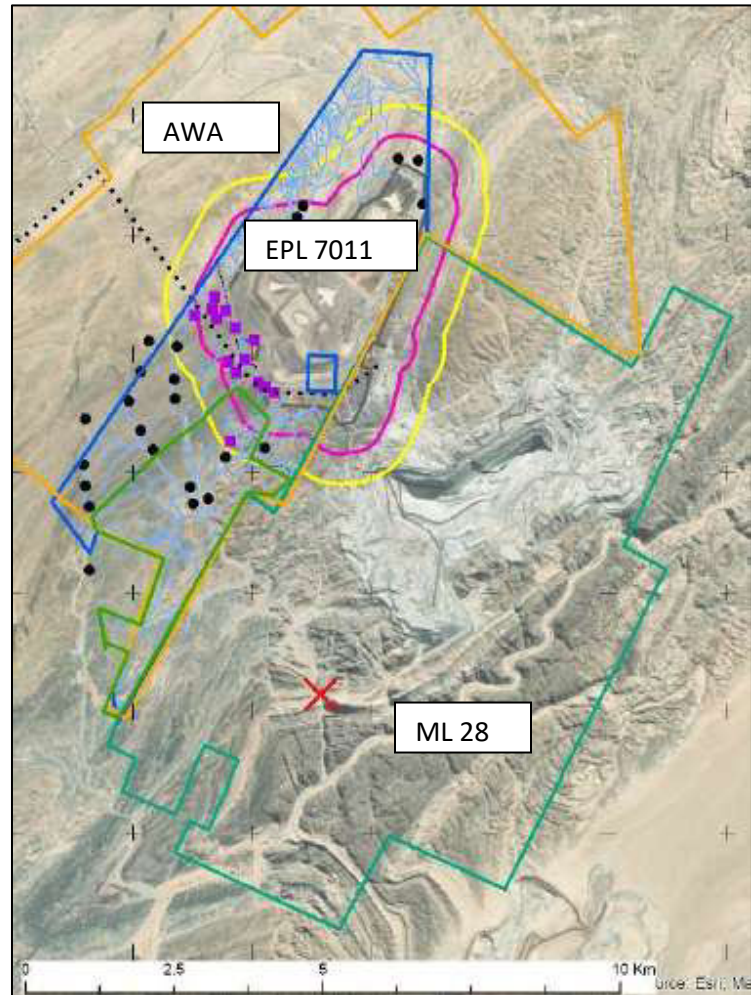


Figure 2: EPL No. 7011 located within the AWA of ML 28

1.2 Terms of Reference, Scope of Works and Appointed Environmental Assessment Practitioner

Excel Dynamic Solutions (Pty) Ltd (EDS) has been appointed by the Proponent to undertake an environmental assessment (EA), and thereafter, apply for an ECC for exploration work on the EPL. There were no formal Terms of Reference (ToR) provided to EDS by the Proponent. The consultant, instead, relied on the requirements of the Environmental Management Act (No. 7 of 2007) (EMA) and its Environmental Impact Assessment (EIA) Regulations (GN. No. 30 of 2012) to conduct the study.

The application for the ECC was compiled and submitted to the Ministry of Environment, Forestry and Tourism (MEFT), the environmental custodian for project registration purposes. Upon submission of an Environmental Scoping Assessment (ESA) Report and Draft Environmental Management Plan (EMP), an ECC for the proposed project will be considered by the Environmental Commissioner at the MEFT's Department of Environmental Affairs and Forestry (DEAF).

The EIA project is headed by Mr. Nerson Tjelos, a qualified and experienced Geoscientist and experienced EAP. The consultation process and reporting were done by Ms. Aili Ipinge and Mr. Silas David, and reviewed by Ms. Rose Mtuleni. EAP CV is presented in **Appendix C**.

1.3 Motivation for the Proposed Project

The mining industry is one of the largest contributors to the Namibian economy. It contributes to the improvement of livelihoods. In Namibia, exploration for minerals is undertaken mainly by the private sector. Mineral exploration has great potential to enhance and contribute to the development of other sectors, and its activities provide temporary employment, as well as taxes that fund social infrastructural development. The minerals sector yields foreign exchange and account for a significant portion of gross domestic product (GDP). Additionally, the industry produces a trained workforce and small businesses that can serve communities and may initiate related businesses. Exploration activities fosters several associated activities such as

manufacturing of exploration and mining equipment, and provision of engineering and environmental services.

The mining sector forms a vital part of some of Namibia's development plans, namely: Vision 2030, National Development Plan 5 (NDP5) and the Harambee Prosperity Plans (HPPs) I and II. Mining of minerals locally is essential to the developmental goals of Namibia in aim of contributing to the ever-increasing global demand for minerals, and for national prosperity. Therefore, successful prospective and exploration on EPL 7011 would lead to the mining of the target commodity, which could contribute towards achieving the goals of the national development plans.

1.4 Namib Ecology Integrity

The ecological integrity and diversity of fauna and flora of the Western Namib is well addressed in the Strategic Environmental Management Plan (SEMP) developed in 2009, as a result of the Strategic Environmental and Socio-Economic Assessment of the Uranium industry "rush". The annual SEMP report (2013) indicated that the integrity and diversity of the Western Namib biodiversity is not compromised by the exploration and mining activities. The report defines ecological integrity to mean that ecological processes are maintained, key habitats are protected, rare and endangered and endemic species are not threatened. The SEMP limits are defined through Environmental Quality Objectives, and aim to;

- Improve Namibia's and the Erongo Region's sustainable socio-economic development and outlook without undermining the growth potential of other sectors;
- Promote local employment and integration of society;
- Ensure that key infrastructure is adequate and well maintained, thus enabling economic development, public convenience and safety;
- Ensure that the integrity of all aquifers remains consistent with the existing natural and operational conditions (baseline). This requires that both the quantity and quality of groundwater are not adversely affected by prospecting and mining activities;
- Ensure workers and the public do not suffer significant increased health risks from the exploration and mining activities;

- Safeguard the natural beauty of the desert and ensure its sense of place are not compromised unduly by the exploration and mining activities.
- Identify ways of avoiding conflicts between the tourism industry and prospecting/mining, so that both industries can coexist in the Western Namib;
- Protect the ecological integrity and diversity of fauna and flora of the Central Namib. All efforts are taken to avoid impacts to the Namib and where this is not possible, disturbed areas are rehabilitated and restored to function after mining / development;
- Maintain and enhance Namibia's international image because of environmentally, socially and financially responsible mining operations;
- Ensure that exploration and mining and all related infrastructure developments will have the least possible negative impact on archaeological and paleontological heritage resources.

2. PROJECT DESCRIPTION: PROPOSED EXPLORATION ACTIVITY

Prospecting and exploration of minerals are the first components of any potential mining related project. This is done to acquire the necessary data required for further decision making and investment options. These activities are anticipated to last for about three years once an ECC has been issued. The exploration process includes three phases - prospecting, exploration, and the decommissioning of works.

2.1 Prospecting Phase

2.1.1 Desktop Study: Geological mapping

This mainly entails a desktop review of geological area maps; study of previous historical geological and mineral exploration works by previous prospectors around the vicinity of the EPL area and attempts to re-evaluate and/or reinterpret these results.

2.1.2 Geophysical surveys

Geophysical surveys entail data collection of the substrate by air or ground, through sensors such as radar, magnetic and/or electromagnetic sensors, to detect and ascertain any mineralization in the area. Ground geophysical surveys shall be conducted, where necessary, using vehicle-mounted sensors or handheld sensors, while in the case of air surveys, the sensors are mounted to an aircraft, which navigates over the target area.

2.1.3 Lithology geochemical surveys

Rock and soil samples are collected and taken for trace element analysis by analytical chemistry laboratories, to determine if sufficient amounts of the target commodities are present. Additionally, trenches or pits may be dug, depending on the commodity (in a controlled environment e.g., fencing off and labelling activity sites), to further investigate the mineral potential.

Soil sampling entails digging of small pits, where 1kg samples can be extracted and sieved to collect about 50g of material. As necessary, and to ensure adequate risk mitigation, all major excavations will be closed immediately after obtaining the needed samples, or the sites will be secured until the trenches or pits are closed. Where necessary, the landowner and other relevant stakeholders will be engaged to obtain authorization.

The Proponent, is therefore required to ensure that RUL is consulted before the prospecting phase commences within the EPL which overlies RUL'S AWA, and the Proponent should obtain written consent to conduct prospecting works from RUL.

2.2 Exploration (Drilling, Sampling and Analysis) Phase

The selection of the potential mineralization model and exploration targets is based on the local geology, trenching, drilling, and assay results of the samples collected. The planned exploration activities are aimed at delineating the mineral deposits and to determine whether the deposits are economically feasible mining resources.

2.2.1 Detailed Exploration Drilling

Should analyses by an analytical laboratory yield positive results, holes are drilled, and drill samples collected for further analysis. This will determine the depth of the potential mineralization. If necessary new access tracks to the drill sites will be created and drill pads in which to set the rig, will be cleared. Two widely used drilling options may be adopted, these are the Reverse Circulation (RC) drilling and/or Diamond (Core) drilling.

RC drilling uses a pneumatic hammer, which drives a rotating tungsten-steel bit. The technique produces an uncontaminated large volume sample, which is composed of rock chips. It is relatively quicker and cheaper when compared to other techniques like Diamond Drilling. However, diamond drilling may also be considered for this exploration programme, during advanced stages of exploration, if large amounts of sample material may be required for analysis and to perform processing trials.

The Proponent is required to ensure RUL is consulted before any exploration activities commences within EPL 7011.

It should be noted that this phase does not plan to perform any blasting activities and the nature of this project only focuses on prospecting and exploration activities within the EPL, which will only commence once an ECC is obtained for this project. The conditions that will be contained in the ECC should be adhered by the Proponent. Deemed economical minerals are discovered in the EPL for a potential mine operation. It should be noted that an Environmental Impact Assessment will be required to be conducted as per the requirement outlined in Environmental Management Act 07 of 2007 for a Mining Licence

(ML). This will be the phase/ stage where the Proponent will be required to conduct geotechnical assessments, to ensure that the mining operation does not affect the stability of the TSF of RUL. The finding and assessments should be shared for public review with RUL.

Drilling fluids

Drilling activities are associated with drilling fluids which are used to enable to drilling activities, the scale used below in an independent parallel scales, the following drilling fluids are anticipated to be used by the Proponent:

Table 1: Shows chemical anticipated to be used during drilling activities

Name of drilling chemical	Hazards identification	Precautionary Statement	Rate (1-5) 1= low hazard; 5= high hazard	Consideration: Y/N
WM PENN JACK FROST ANTIFREEZE	Harmful if swallowed. May cause damage to organs through prolonged or repeated exposure.	Do not allow to enter drainage system, surface or ground water.	4	N
WM PENN VALVE EASE	The product has not been classified as hazardous.	Do not allow to enter drainage system, surface or ground water.	4	N
WM PENN ATF TYPE IID	The product has not been classified as hazardous.	No special measures required	2	Y

TITAN TRUCK PLUS SAE 15W-40	The product is not classified according to the Globally Harmonised System (GHS).	No special measures required	2	Y
Super Luplex M2	The product has not been classified as hazardous	Do not allow to enter drainage system, surface or ground water.	3	N
GRAPHITED ROD GREASE	The product has been classified and labelled as hazardous according to the legislation in force	Do not allow to enter drainage system, surface or ground water	5	N

The above drilling fluids may potential pose pollution to groundwater, drainage and surface water within the proposed development. It is based on this fact that the Proponent is not advised to use the N rated drilling fluids. **However, the Proponent is advised to use the WM PENN ATF TYPE IID and TITAN TRUCK PLUS SAE 15W-40 which have less effect to the groundwater and surface water in the project area.**

It should be noted that no exploration activities will be conducted within rivers as outlined under Section 52 (1), Minerals (Prospecting and Mining) Act (No. 33 of 1992).

2.3 Other aspects of the proposed exploration operations include:

2.3.1 Accessibility to Site

The EPL is accessible via the D1911 road from Arandis, which diverges onto the D1905. The D1905 leads to an existing road that belongs to RUL, located adjacent to the EPL boundaries. The project related vehicles will be using these existing roads to access the EPL upon agreements with RUL as required under Section 52, Minerals (Prospecting and Mining) Act (No. 33 of 1992).

2.3.2 Material and Equipment

The input required for the exploration program in terms of vehicles and equipment includes: 4X4 vehicles, truck, drill rigs, excavator / front-end loader, dozer/s, drilling fluids stored in manufacturers approved containers, air compressors, generator for power supply. Equipment and vehicles will be stored at a designated area near the accommodation site, or a storage site established within the EPL area.

2.3.3 Services and Infrastructure

Water: About 4 000 liters of water will be required per month for exploration activities. This water will be used for cooling down and washing equipment, drilling-related activities, and ablution. Potable water will also be made available for the exploration crew on site. The water will be sourced from elsewhere (Upon acquiring all the required permit and reaching agreement with relevant authorities) and transported to the site.

Power supply: Power required during the operation phase will be provided from diesel-generators. About 2,500 litres of diesel will be used per day, a bunded diesel bowser which will be on site, will be filled 2 – 3 times a week by a diesel bowser.

Fuel (diesel for generators and other equipment): The fuel (diesel) required for exploration equipment will be stored in a tank mounted on a mobile trailer, and drip trays will be readily available on this trailer and monitored to ensure that accidental fuel spills are cleaned up as soon as they have been detected/observed. Fuel may also be stored in jerry cans placed on plastic sheeting to avoid unnecessary contamination of the ground.

2.3.4 Waste Management

The site will be equipped with secured waste bins for each type of waste (i.e., general and hazardous). Depending on the amount generated, waste will be sorted and collected as often as necessary and taken to the nearest certified landfill site. An agreement will need to be reached with different waste management facility operators/owners and authorization or permits will be obtained prior to utilizing these facilities, in the case of production of any hazardous waste.

Sanitation and human waste: Mobile chemical ablation facilities will be provided on-site. The wastewater will be transported offsite to the treatment facility either by the designated/appointed external waste management contractor.

Hazardous waste: Drip trays and spill control kits will be available on site to ensure that oil/fuel spills and leaks from vehicles and equipment are captured on time and contained correctly before polluting the site.

2.3.5 Health and safety

The site has high risk to radiation exposure which comes from the tailing storage facility (TSF) emanating from the RUL operations to the EPL. The Proponent should ensure that adequate and appropriate Personal Protective Equipment (PPE) is provided to every project personnel while working on site.

A minimum of three first aid kits will be readily available on site to attend to potential minor injuries.

2.3.6 Safety and Security

Storage Site: Temporary storage areas for exploration material, equipment and machinery will be required at the campsite and/or exploration sites. Security will be supplied on a 24-hour basis at the delegated sites for storage. A temporary support fence will be constructed around the storage site to ensure animals are not put at risk.

Fire management: A minimum of basic firefighting equipment, i.e., three fire extinguishers will be readily available in vehicles, at the working sites and camps.

2.3.7 Accommodation

The exploration workforce will be accommodated in Arandis, upon reaching written agreement between the Proponent and the respective landowner or custodian (Arandis Town Council) before setting up accommodation structures (tented camps). Exploration activities will take place during daytime only and staff will commute to exploration site(s) from their place of accommodation.

2.4 Decommissioning and Rehabilitation Phase

Once the exploration activities on the EPL come to an end, the Proponent will need to put site rehabilitation measures in place. Decommissioning and rehabilitation are primarily reinforced through a decommissioning and rehabilitation plan, which consists of safety, health,

environmental, and contingency aspects. An unfavorable economic situation or unconvincing exploration results might force the Proponent to cease the exploration program before predicted closure. Therefore, it is of best practice for the Proponent to ensure the project activities cease in an environmentally friendly manner and site is rehabilitated.

3. PROJECT ALTERNATIVES

Alternatives are defined as the “*different means of meeting the general purpose and requirements of the activity*” (EMA, 2007). This section will highlight the different ways in which the project can be undertaken and to identify the alternative that will be the most practical, but least damaging to the environment is identified.

Once the alternatives have been established, these are examined by asking the following three questions:

- What alternatives are technically and economically feasible?
- What are the environmental effects associated with the feasible alternatives?
- What is the rationale for selecting the preferred alternative?

The alternatives considered for the proposed development are discussed in the following subsections.

3.1 Types of Alternatives Considered

3.1.1 The "No-go" Alternative

The “no action” alternative implies that the status quo remains, and no prospecting and exploration activity occur on site. Should the proposal of exploration activities on the EPL be discontinued, none of the potential impacts (positive and negative) identified, would occur. If the proposed project is to be discontinued, the current land use for the proposed site will remain unchanged.

The no-go option was considered and a comparative assessment of the environmental and socio-economic impacts of the “no action” alternative was undertaken to establish what benefits might be lost if the project is not implemented. The key losses that may never be realized if the proposed project does not go ahead include:

- Loss of foreign direct investment.
- About 5 – 10 temporary job opportunities for community members will not come to realization.

- No realization of local businesses supports through the procurement of consumable items such as Personal Protective Equipment (PPE), machinery spare parts, lubricants, etc.
- Loss of potential income to local and national government through land lease fees, Licences lease fees and various tax structures.
- Improved geological understanding of the site area regarding the targeted commodities.
- Socio-economic benefits such as skills acquisition to local community members would be not realized.

Considering the above losses, the “no-action/go” alternative is considered a viable option for the project, although, in the case where parts of the EPL are considered environmentally sensitive and/or protected, one or severally sections of the site may be identified as no-go zones.

3.1.2 Exploration Location

The prospecting/exploration location is dependent on the geological setting (regional and local), the economic geology, and the exploration and mining history of the EPL area. The mineralization of the target commodities is area-specific, and exploration targets are primarily determined by the geology (host rocks) and the tectonic environment of the site (an ore-forming mechanism). Therefore, finding an alternative location for the planned exploration activities is not possible. The tenement has sufficient surface area for related facilities, should an economic mineral deposit be defined.

Furthermore, the potential locations of national mineral resources are mapped and categorized by the Ministry of Mines and Energy on the Namibia Mining Cadastral Map. The mining cadastre contains information on Exclusive Prospecting Licenses, Mining Claims and Licenses, Mineral Deposit Retention Licenses, Reconnaissance Licenses and Exclusive Reconnaissance Licenses. Information on EPL 7011 (**Figure 3**) and other licenses are available on the Namibia Mining Cadastral Map (<https://portals.landfolio.com/namibia/>).

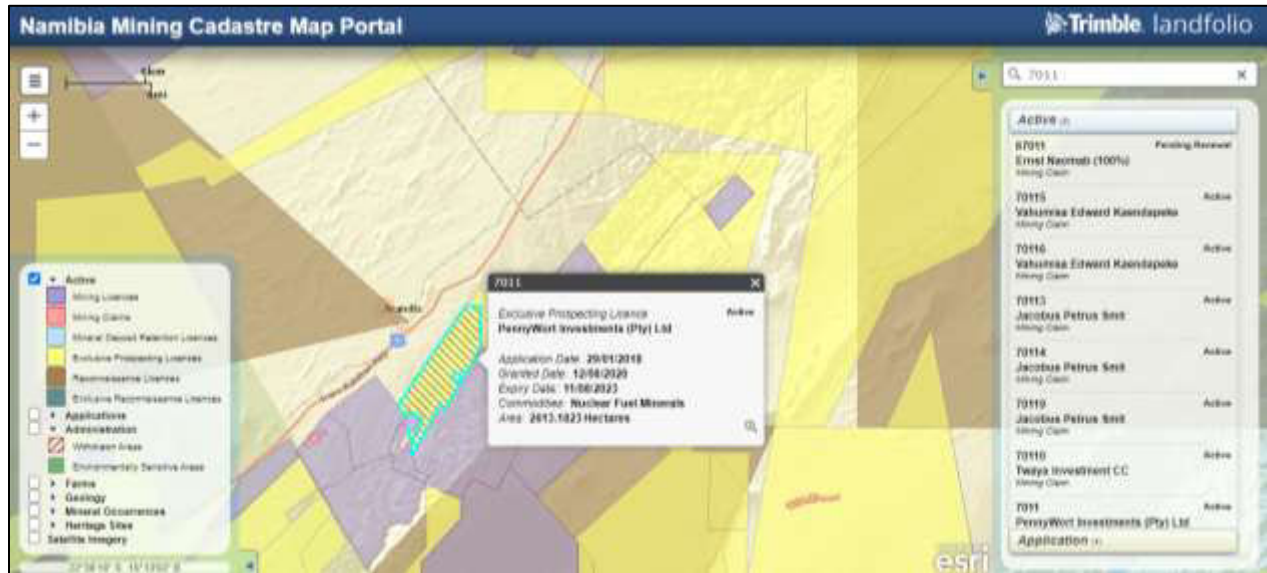


Figure 3: Status and location of the EPL on the MME mining cadastre

3.1.3 Exploration Methods

It is anticipated that the invasive exploration methods will be utilized. If any other alternative viable exploration methods other than those described in this report are found to achieve the purpose more effectively and/or efficiently without aggravating any environmental measures put in place, they be implemented.

No blasting activities is planned for the exploration phase.

4. LEGAL FRAMEWORK: LEGISLATION, POLICIES AND GUIDELINES

Prospecting and exploration activities have legal implications associated to certain applicable legal standards. A summary of applicable and relevant international policies and Namibian legislation, policies and guidelines to the proposed development is given in this section. This summary serves to inform the project Proponent, Interested and Affected Parties and the decision makers at the DEAF, of the requirements and expectations, as laid out in terms of these instruments, to be fulfilled to establish the proposed prospecting and exploration activities.

4.1 The Environmental Management Act (No. 7 of 2007)

This ESA was carried out according to the Environmental Management Act (EMA) (Act No. 7 of 2007) and its Environmental Impact Assessment (EIA) Regulations (GG No. 4878 GN No. 30).

The EMA has stipulated requirements to complete the required documentation to obtain an Environmental Clearance Certificate (ECC) for permission to undertake certain listed activities. These activities are listed under the following Regulations:

3.1 The construction of facilities for any process or activities which requires a Licences, right of other forms of authorization, and the renewal of a Licences, right or other form of authorization, in terms of the Minerals (Prospecting and Mining Act, 1992).

3.2 other forms of mining or extraction of any natural resources whether regulated by law or not.

3.3 Resource extraction, manipulation, conservation and related activities.

Other legal obligations that are relevant to the proposed activities of EPL No. 7011 and related activities are presented in **Table 2**.

Table 2: Applicable local, national and international standards, policies and guidelines governing the proposed development

Legislation/Policy/ Guideline	Relevant Provisions	Implications for this project
<p>The Constitution of the Republic of Namibia, 1990 as amended</p>	<p>The Constitution of the Republic of Namibia (1990 as amended) addresses matters relating to environmental protection and sustainable development. Article 91(c) defines the functions of the Ombudsman to include:</p> <p>“...the duty to investigate complaints concerning the over-utilization of living natural resources, the irrational exploitation of non-renewable resources, the degradation and destruction of ecosystems and failure to protect the beauty and character of Namibia...”</p> <p>Article 95(l) commits the state to actively promote and maintain the welfare of the people by adopting policies aimed at the:</p> <p>“...Natural resources situated in the soil and on the subsoil, the internal waters, in the sea, in the continental shelf, and in the exclusive economic zone are property of the State.”</p>	<p>By implementing the environmental management plan, the establishment will be in conformant to the constitution in terms of environmental management and sustainability.</p> <p>Ecological sustainability will be main priority for the proposed development.</p>
<p>The National Policy on Prospecting and Mining in Protected Areas</p>	<p>Requires that, where necessary a Memorandum of Understanding is developed between prospecting and mining Companies, the MEFT and the MME to set out additional implementation mechanisms.</p>	<p>The Proponent should maintain the integrity of ecosystems and natural resources, and avoiding degradation of areas highly sensitive for their ecological,</p>

Legislation/Policy/ Guideline	Relevant Provisions	Implications for this project
		social and/or cultural heritage value.
Minerals (Prospecting and Mining) Act (No. 33 of 1992)	<p>Section 52 requires mineral Licenses holders to enter into a written agreement with affected landowners before exercising rights conferred upon the Licenses holder.</p> <p>Section 52(1) mineral Licenses holder may not exercise his/her rights in any town or village, on or in a proclaimed road, land utilized for cultivation, within 100m of any water resource (borehole, dam, spring, drinking trough etc.) and boreholes, or no operations in municipal areas, etc.), which should individually be checked to ensure compliance.</p> <p>Section 54 requires written notice to be submitted to the Mining Commissioner in the event that the holder of a mineral Licenses (which includes an EPL) intends to abandon the mineral Licenses area.</p>	<p>The Proponent should enter into a written agreement with landowners before carrying out exploration.</p> <p>The Proponent should carry out an assessment of the impact on the receiving environment.</p> <p>The Proponent should include as part of their application for the EPL, measures by which they will rehabilitate the areas where they intend to carry out mineral exploration activities.</p> <p>The Proponent may not carry out exploration activities within the areas limited by Section 52 (1) of this Act.</p>

Legislation/Policy/ Guideline	Relevant Provisions	Implications for this project
	<p>Section 68 stipulates that an application for an EPL shall contain the particulars of the condition of, and any existing damage to, the environment in the area to which the application relates and an estimate of the effect which the proposed prospecting operations may have on the environment and the proposed steps to be taken in order to prevent or minimize any such effect.</p> <p>Section 91 requires that rehabilitation measures should be included in an application for a mineral Licenses.</p>	
<p>Mine Health & Safety Regulations, 10th Draft</p>	<p>Makes provision for the health and safety of persons employed or otherwise present in mineral Licenses area. These deal with among other matters; clothing and devices; design, use, operation, supervision and control of machinery; fencing and guards; and safety measures during repairs and maintenance.</p>	<p>The Proponent should comply with all these regulations with respect to their employees.</p>
<p>Petroleum Products and Energy Act (No. 13 of 1990) Regulations (2001)</p>	<p>Regulation 3(2)(b) states that “No person shall possess [sic] or store any fuel except under authority of a Licenses or a certificate, excluding a person who possesses or stores such fuel in a quantity of 600 litres or less in any container kept at a place outside a local authority area”</p>	<p>The Proponent should obtain the necessary authorization from the MME for the storage of fuel on-site.</p>

Legislation/Policy/ Guideline	Relevant Provisions	Implications for this project
The Regional Councils Act (No. 22 of 1992)	This Act sets out the conditions under which Regional Councils must be elected and administer each delineated region. From a land use and project planning point of view, their duties include, as described in section 28 “to undertake the planning of the development of the region for which it has been established with a view to physical, social and economic characteristics, urbanisation patterns, natural resources, economic development potential, infrastructure, land utilisation pattern and sensitivity of the natural environment.	The relevant Regional Councils are considered to be I&APs and must be consulted during the Environmental Assessment (EA) process. The project site falls under the Erongo Regional Council; therefore, they should be consulted.
Local Authorities Act No. 23 of 1992	To provide for the determination, for purposes of traditional government, of traditional authority councils; the establishment of such traditional authority councils; and to define the powers, duties and functions of traditional authority councils; and to provide for incidental matters.	The Arandis Town Council is the responsible local Authority of the area therefore they should be consulted.
Water Act 54 of 1956	The Water Resources Management Act 11 of 2013 is presently without regulations; therefore, the Water Act No 54 of 1956 is still in force:	The protection (both quality and quantity/abstraction) of water resources should be a priority.

Legislation/Policy/ Guideline	Relevant Provisions	Implications for this project
	<p>Prohibits the pollution of water and implements the principle that a person disposing of effluent or waste has a duty of care to prevent pollution (S3 (k)).</p> <p>Provides for control and protection of groundwater (S66 (1), (d (ii)).</p> <p>Liability of clean-up costs after closure/abandonment of an activity (S3 (l)). (l)).</p>	
Water Resources Management Act (No 11 of 2013)	<p>The Act provides for the management, protection, development, use and conservation of water resources; and provides for the regulation and monitoring of water services and to provide for incidental matters. The objects of this Act are to:</p> <p>Ensure that the water resources of Namibia are managed, developed, used, conserved and protected in a manner consistent with, or conducive to, the fundamental principles set out in Section 66 - protection of aquifers, Subsection 1 (d) (iii) provide for preventing the contamination of the aquifer and water pollution control (Section 68).</p>	

Legislation/Policy/ Guideline	Relevant Provisions	Implications for this project
National Heritage Act No. 27 of 2004	To provide for the protection and conservation of places and objects of heritage significance and the registration of such places and objects; to establish a National Heritage Council; to establish a National Heritage Register; and to provide for incidental matters.	The Proponent should ensure compliance with these Acts requirements. The necessary management measures and related permitting requirements must be taken. This done by the consulting with the National Heritage Council of Namibia.
The National Monuments Act (No. 28 of 1969)	The Act enables the proclamation of national monuments and protects archaeological sites.	
Soil Conservation Act (No 76 of 1969)	The Act makes provision for the prevention and control of soil erosion and the protection, improvement and conservation of soil, vegetation and water supply sources and resources, through directives declared by the Minister.	Duty of care must be applied to soil conservation and management measures must be included in the EMP.
Public Health Act (No. 36 of 1919)	Section 119 states that “no person shall cause a nuisance or shall suffer to exist on any land or premises owned or occupied by him or of which he is in charge any nuisance or other condition liable to be injurious or dangerous to health.”	The Proponent and all its employees should ensure compliance with the provisions of these legal instruments.
Health and Safety Regulations GN 156/1997 (GG 1617)	Details various requirements regarding health and safety of labours.	

Legislation/Policy/ Guideline	Relevant Provisions	Implications for this project
Road Traffic and Transport Act, No. 22 of 1999	The Act provides for the establishment of the Transportation Commission of Namibia; for the control of traffic on public roads, the licensing of drivers, the registration and licensing of vehicles, the control and regulation of road transport across Namibia's borders; and for matters incidental thereto. Should the Proponent wish to undertake activities involving road transportation or access onto existing roads, the relevant permits will be required.	Mitigation measures should be provided for, if the roads and traffic impact cannot be avoided, the relevant permits must be applied for.
Labour Act (No. 6 of 1992)	Ministry of Labour (MOL) is aimed at ensuring harmonious labours relations through promoting social justice, occupational health and safety and enhanced labours market services for the benefit of all Namibians. This ministry insures effective implementation of the Labour Act no. 6 of 1992.	The Proponent should ensure that the prospecting and exploration activities do not compromise the safety and welfare of workers.

4.2 International Policies, Principles, Standards, Treaties and Conventions

The international policies, principles, standards, treaties, and conventions applicable to the project are as listed in **Table 3** below.

Table 3: International Policies, Principles, Standards, Treaties and Convention applicable to the project

Statute	Provisions	Project Implications
Equator Principles	A financial industry benchmark for determining, assessing, and managing	These principles are an attempt to:

Statute	Provisions	Project Implications
	<p>environmental and social risk in projects (August 2013). The Equator Principles have been developed in conjunction with the International Finance Corporation (IFC), to establish an International Standard with which companies must comply with to apply for approved funding by Equator Principles Financial Institutions (EPFIs). The Principles apply to all new project financings globally across all sectors.</p> <p>Principle 1: Review and Categorization</p> <p>Principle 2: Environmental and Social Assessment</p> <p>Principle 3: Applicable Environmental and Social Standards</p> <p>Principle 4: Environmental and Social Management System and Equator Principles Action Plan</p> <p>Principle 5: Stakeholder Engagement</p> <p>Principle 6: Grievance Mechanism</p> <p>Principle 7: Independent Review</p> <p>Principle 8: Covenants</p> <p>Principle 9: Independent Monitoring and Reporting</p> <p>Principle 10: Reporting and Transparency</p>	<p>'...encourage the development of socially responsible projects, which subscribe to appropriately responsible environmental management practices with a minimum negative impact on project-affected ecosystems and community-based upliftment and empowering interactions.'</p>

Statute	Provisions	Project Implications
<p>The International Finance Corporation (IFC) Performance Standards</p>	<p>The International Finance Corporation's (IFC) Sustainability Framework articulates the Corporation's strategic commitment to sustainable development and is an integral part of IFC's approach to risk management. The Sustainability Framework comprises IFC's Policy and Performance Standards on Environmental and Social Sustainability, and IFC's Access to Information Policy. The Policy on Environmental and Social Sustainability describes IFC's commitments, roles, and responsibilities related to environmental and social sustainability.</p> <p>As of 28 October 2018, there are ten (10) Performance Standards (Performance Standards on Environmental and Social Sustainability) that the IFC requires a project Proponents to meet throughout the life of an investment. These standard requirements are briefly described below:</p> <p>Performance Standard 1: Assessment and Management of Environmental and Social Risks and Impacts.</p> <p>Performance Standard 2: Labour and Working Conditions</p> <p>Performance Standard 3: Resource Efficient and Pollution Prevention and Management.</p>	<p>The Performance Standards are directed towards clients, providing guidance on how to identify risks and impacts, and are designed to help avoid, mitigate, and manage risks and impacts as a way of doing business in a sustainable way, including stakeholder engagement and disclosure obligations of the Client (Borrower) in relation to project-level activities. In the case of its direct investments (including project and corporate finance provided through financial intermediaries), IFC requires its clients to apply the Performance Standards to manage environmental and social risks and impacts so that development opportunities are enhanced. IFC uses the</p>

Statute	Provisions	Project Implications
	<p>Performance Standard 4: Community Health and Safety.</p> <p>Performance Standard 5: Land Acquisition, Restrictions on Land Use, and Involuntary Resettlement.</p> <p>Performance Standard 6: Biodiversity Conservation and Sustainable Management of Living Natural Resources</p> <p>Performance Standard 7: Indigenous Peoples/Sub-Saharan African Historically Underserved Traditional Local Communities.</p> <p>Performance Standard 8: Cultural Heritage.</p> <p>Performance Standard 9: Financial Intermediaries (FIs).</p> <p>Performance Standard 10: Stakeholder Engagement and Information</p> <p>A full description of the IFC Standards can be obtained from</p> <p>http://www.worldbank.org/en/projects-operations/environmental-and-social-framework/brief/environmental-and-social-standards?cq_ck=1522164538151#ess1</p>	<p>Sustainability Framework along with other strategies, policies, and initiatives to direct the business activities of the Corporation to achieve its overall development objectives.</p>
<p>The United Nations Convention to Combat</p>	<p>Addresses land degradation in arid regions with the purpose to contribute to the conservation and sustainable use of</p>	<p>The project activities should not be such that they contribute to desertification.</p>

Statute	Provisions	Project Implications
Desertification (UNCCD) 1992	<p>biodiversity and the mitigation of climate change.</p> <p>The convention objective is to forge a global partnership to reverse and prevent desertification/land degradation and to mitigate the effects of drought in affected areas to support poverty reduction and environmental sustainability United Nation Convention.</p>	
Convention on Biological Diversity 1992	<p>Regulate or manage biological resources important for the conservation of biological diversity whether within or outside protected areas, with a view to ensuring their conservation and sustainable use.</p> <p>Promote the protection of ecosystems, natural habitats, and the maintenance of viable populations of species in natural surroundings.</p>	Removal of vegetation cover and destruction of natural habitats should be avoided and where not possible minimised.
Stockholm Declaration on the Human Environment, Stockholm (1972)	It recognizes the need for: “a common outlook and common principles to inspire and guide the people of the world in the preservation and enhancement of the human environment.	Protection of natural resources and prevention of any form of pollution.

Relevant international Treaties and Protocols ratified by the Namibian Government

- Convention on International Trade and Endangered Species of Wild Fauna and Flora (CITES), 1973.
- Convention on Biological Diversity, 1992.

- World Heritage Convention, 1972.

5. ENVIRONMENTAL BASELINE

The proposed exploration programme will be undertaken in specific environmental and social conditions. Understanding the pre-project conditions of the environment will aid in laying down background "information" of the status quo and future projections of environmental conditions after proposed works on the EPL. This also helps the EAP in identifying the sensitive environmental features that may need to be protected through the recommendations and effective implementation of mitigation measures provided.

The baseline information presented below is sourced from a variety of sources including reports of studies conducted in the Erongo Region. Further information was obtained by the Consultant during the site visit.

5.1 Biophysical Environment

Climate

Climate has a major influence on the exploration activities proposed on the EPL. Understanding of climatic conditions helps to determine the appropriate and/or inappropriate times to conduct exploration activities.

Around Arandis, the summers are short, warm, and mostly clear; the winters are cool, windy, and clear. High temperatures around the project area are mainly experienced between February and June, at an average of 24.08 °C; and the lowest temperatures are experienced at an average of 14.14 °C in September. The highest average rainfall of 29.21 mm is experienced in March, and the lowest average rainfall of 0.34 mm is experienced in July. Moreover, January months experience the highest humidity of 78.61% and low humidity in July at 53.87%. **Figure 3** shows the climatic condition in Arandis.

Month	Jan	Feb	Mar	Apr	May	Jun	Jul	Aug	Sep	Nov	Oct	Dec	Year
Record high °C (°F)	29.31 (84.76)	28.3 (82.94)	36.39 (97.5)	32.35 (90.23)	33.36 (92.05)	30.32 (86.58)	31.33 (88.39)	32.35 (90.23)	31.33 (88.39)	30.32 (86.58)	29.31 (84.76)	26.28 (79.3)	36.39 (97.5)
Average high °C (°F)	22.4 (72.32)	22.94 (73.29)	23.8 (74.84)	24.02 (75.24)	24.08 (75.34)	22.49 (72.48)	22.37 (72.27)	20.75 (69.35)	20.56 (69.01)	20.74 (69.33)	21.35 (70.43)	21.62 (70.92)	22.26 (72.07)
Daily mean °C (°F)	20.91 (69.64)	21.34 (70.41)	22.05 (71.69)	21.98 (71.56)	21.67 (71.01)	19.86 (67.75)	19.6 (67.28)	18.0 (64.4)	18.09 (64.56)	18.64 (65.55)	19.55 (67.19)	20.07 (68.13)	20.15 (68.27)
Average low °C (°F)	18.69 (65.64)	19.06 (66.31)	19.47 (67.05)	19.09 (66.36)	18.44 (65.19)	16.26 (61.27)	15.72 (60.3)	14.17 (57.51)	14.14 (57.45)	14.98 (58.96)	16.23 (61.21)	17.24 (63.03)	16.96 (62.53)
Record low °C (°F)	14.15 (57.47)	16.17 (61.11)	14.15 (57.47)	13.14 (55.65)	13.14 (55.65)	11.12 (52.02)	11.12 (52.02)	10.11 (50.2)	11.12 (52.02)	10.11 (50.2)	12.13 (53.83)	14.15 (57.47)	10.11 (50.2)
Average precipitation mm (inches)	16.66 (0.66)	27.75 (1.09)	29.21 (1.15)	10.38 (0.41)	5.16 (0.2)	0.37 (0.01)	0.34 (0.01)	0.54 (0.02)	3.51 (0.14)	2.9 (0.11)	4.92 (0.19)	12.84 (0.51)	9.55 (0.38)
Average precipitation days (≥ 1.0 mm)	3.49	3.77	3.95	2.48	0.45	0.09	0.09	0.09	0.56	0.65	1.1	2.11	1.57
Average relative humidity (%)	78.61	77.07	71.3	63.8	56.68	55.83	53.87	63.67	69.06	71.81	72.59	76.78	67.59
Mean monthly sunshine hours	11.58	11.59	11.62	11.35	11.13	11.01	11.03	11.28	11.59	11.68	11.69	11.66	11.43

Figure 4: Shows the climate condition around the project area, Arandis (source: Arandis climate: Climate-Data.org)

Wind

The Prevailing wind direction around the project area is averaged out over four seasons (**figure 4**). The highest wind speeds are reached in autumn and winter in a NNE direction, and in autumn in a SWW direction. During spring and summer, the prevailing winds are from westerly directions (Gunhild, 2015).

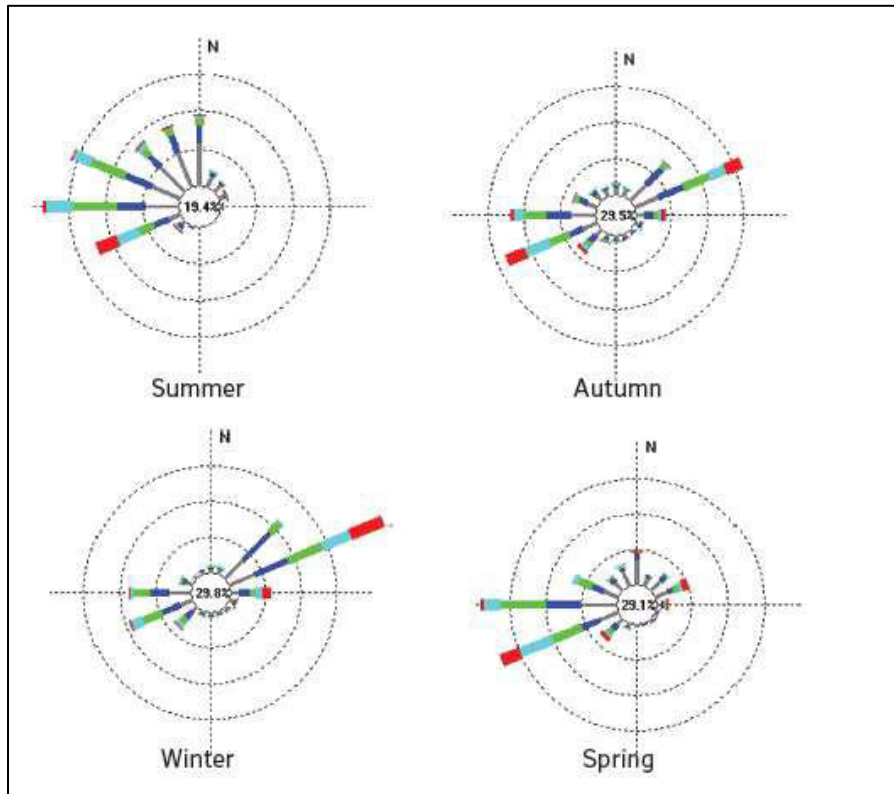


Figure 5: Shows the direction around the project area (source: Gunhild, 2015)

The wind direction is mainly associated with picking up particles from one place to another. Taking into account the nature the proposed development is located near the TSF of RUL, dust particles are potentially transported from the tailing facility in SW direction towards the EPL, these dust particles contains some uranium contents (Gunhild, 2015).

It should be noted that the mitigation measures outlined in the report with respect to the health and safety of workers should be adhered too.

5.1 Topography

The EPL 7011 is located within the Central Western Plain which consist of areas of dissection and erosional cutbacks into higher ground and carving out catchment area of several major rivers such Khan, Omaruru, Swakop and Ugab Rivers. The EPL area is located at approximately 250 - 2350 metres above sea level. **Figures 6 (a)** and **Figure 6 (b)** show the topography map and the general topographic overview of the EPL, respectively.

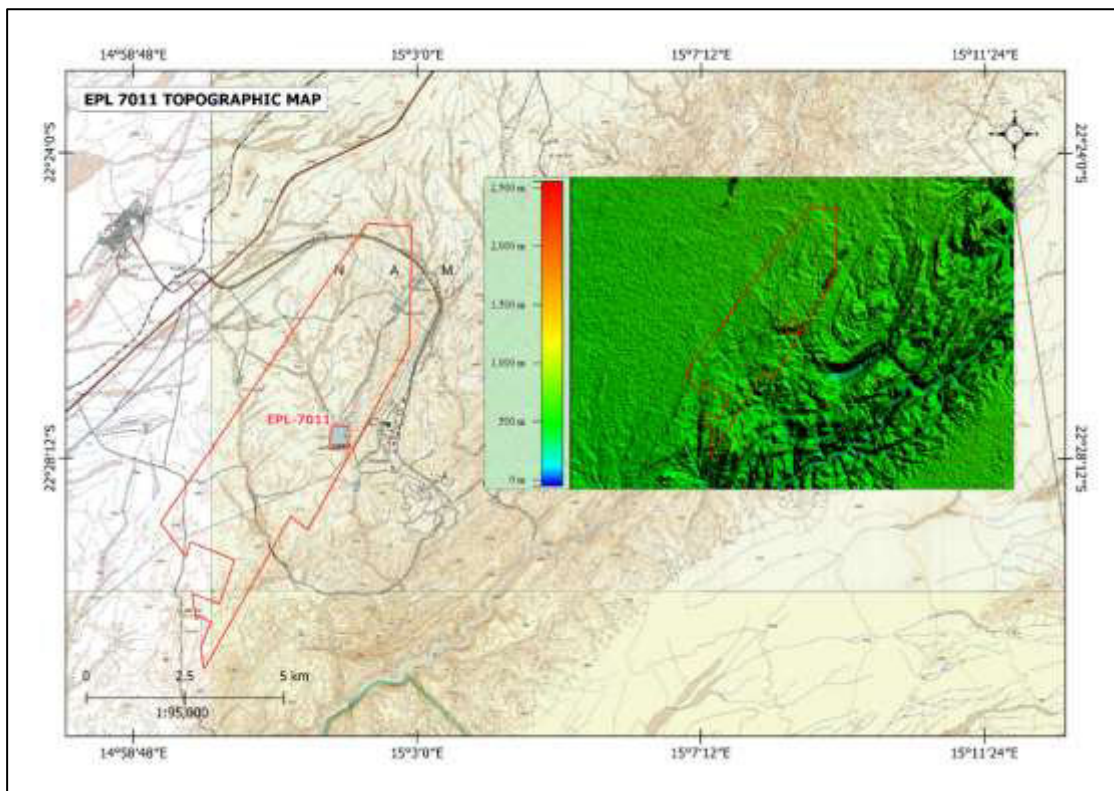


Figure 6 (a): Topography of project area



Figure 6 (b): The general topographic overview of the EPL

5.2 Geology and Soil

Geology

The EPL falls within the Southern Central Zone of the Neo-Proterozoic Damara Orogenic Belt (Mendelsohn, 2003). The EPL is mainly dominated by Calc-silicates, produced by metasomatic alteration of existing rocks, in which calcium silicate minerals such as diopside and wollastonite are produced. Calc-silicate skarn or hornfels occur within impure limestone or dolomite strata adjacent to an intruding igneous rock. The north-eastern part of the EPL is covered by Mica-schists. A portion of sand, gravel and calcrete are dominating the south-eastern part of the EPL. **Figure 7** below shows the general geology map for the project.

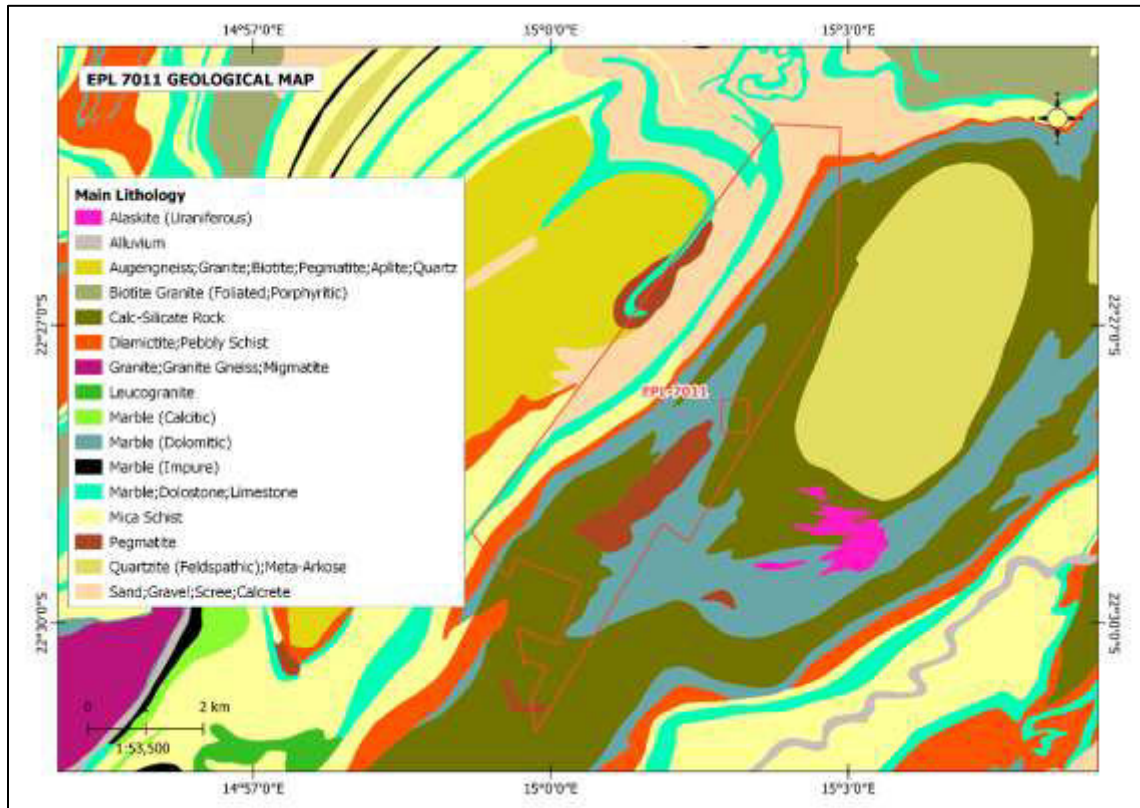


Figure 7: A map of the general geology of the project area

Soil

A large proportion of the EPL area contains Petric Gypsisols, while a smaller portion contains rock outcrops. The Gypsisols are formed because of the accumulation of Calcium Sulphate and they are restricted to the dry central Namib. This type of soil has a low fertility and only hard plants grows in them (Mendelsohn, 2003). **Figure 8** below is a map of the soil types found within the EPL area.

During prospecting phase of the project, soil sampling may be conducted. Therefore, the Soil Conservation Act (No 76 of 1969) should be taken into account to ensure that soils are conserved in way that does not promote soil erosions, which may result in creation of gullies.

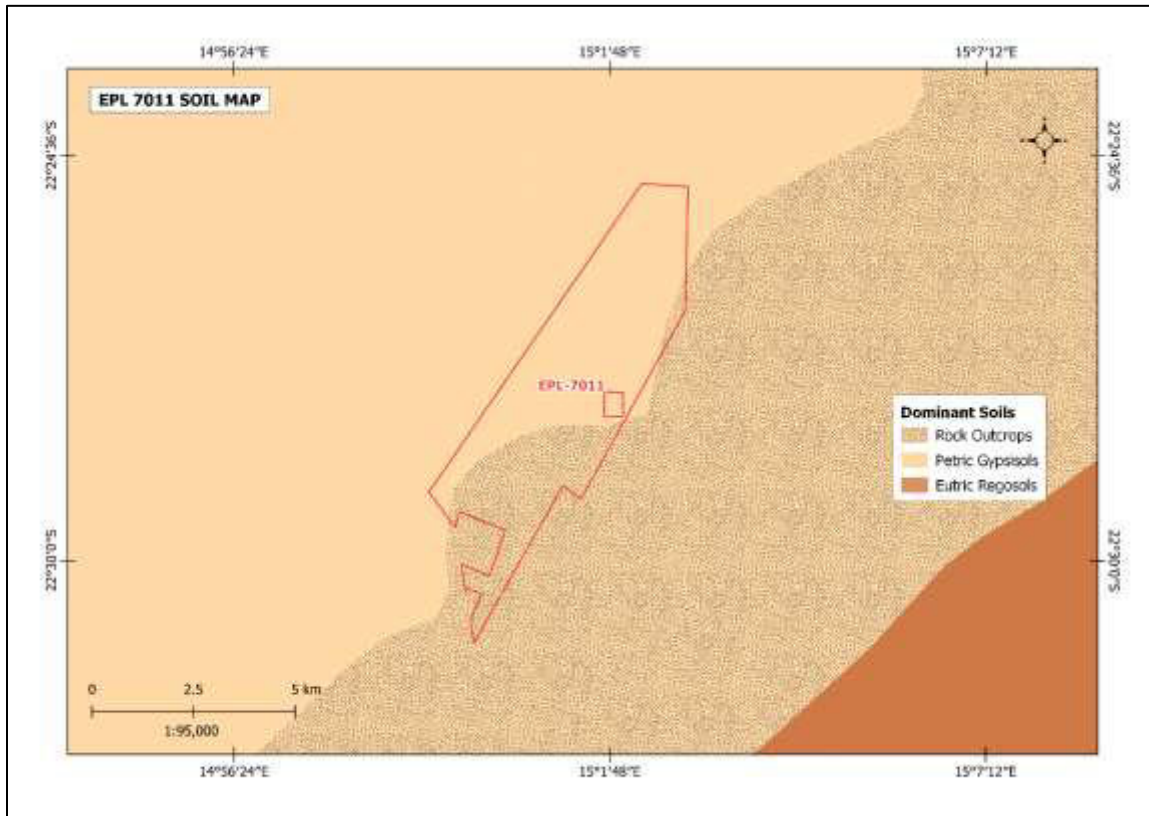


Figure 8: Shows the dominant soil types found within the EPL

5.3 Hydrology and Water Resources

In terms of groundwater, the EPL contains rock bodies with little groundwater potential, which means that the rock bodies are of moderate permeable. The area along the Khan River running further east of the EPL is considered to have a high rate of ground water vulnerability, including a section southeast of the EPL. The mitigation measures outlined in this report should be strictly be adhered too (please refer to section 7.3.4). **Figure 9** shows the groundwater map of the project area.

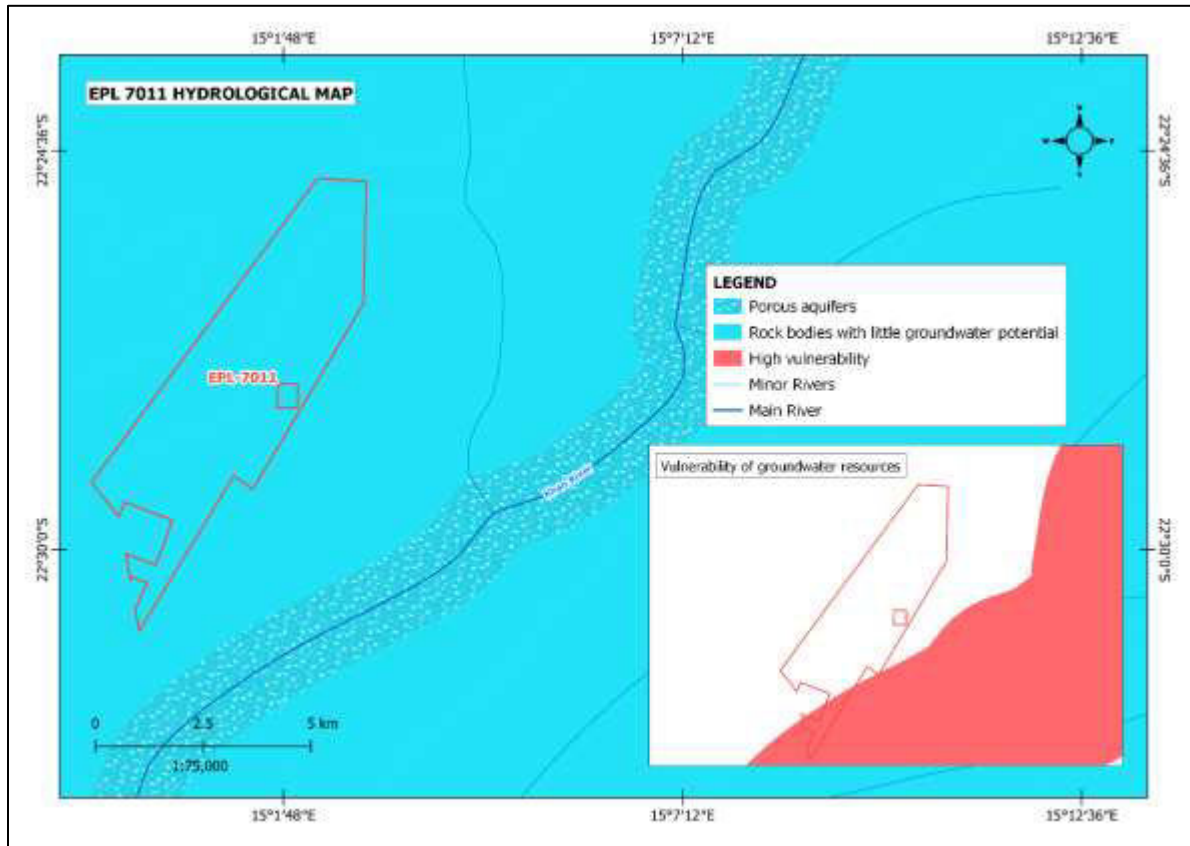


Figure 9: Surface hydrology, aquifers, and ground vulnerability around the EPL

It should be noted that there are existing monitoring boreholes and supporting infrastructures within the EPL which belongs to RUL, and there are existing river streams which run through the EPL area, from the Khan River which is located near the EPL. Thus, these facilities and streams are regarded as no-go zone for exploration activities and the proponent is recommended not to exercise any exploration activities within 100- 150 m of any water resource (monitoring boreholes and river streams) as required by the Minerals (Prospecting and Mining) Act (No. 33 of 1992), Section 52 (1). **Figure 10** shows the water resources for the project area.

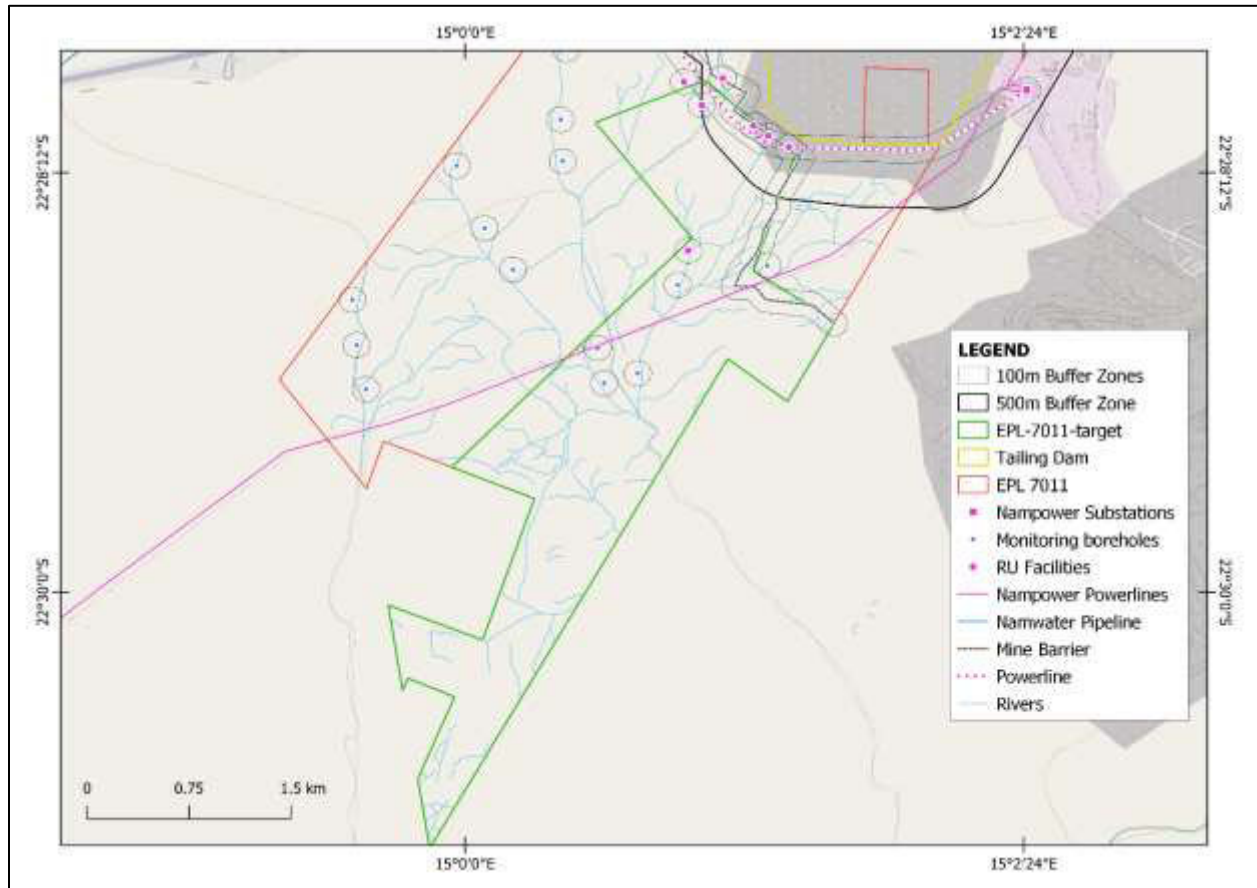


Figure 10: shows the water resources for within the EPL 7011

5.4 Flora and Fauna

Flora

The project area is mainly covered by *Arthroa leubnitziae* (pencil bush), *Aloe asperifolia* (Sand paper aloe) and *Zygophyllum stapfii* (Dollar bush) which are mainly found on the plains, and *Euphorbia Virosa* (Milk Bish) and various *Commiphora* species (Kanniedood) on the hillsides, other common species include; *Aslepias buchenaviana*, *Salsola tuberculata*, *Pelargoium otaviense*, *Adenolobus pechueli*, *Aizoanthemum membrumconnectens*, *Sarcocaulon marlothii*, *Trichocaulon pedicellatum*, *Euphorbia Virosa* and *Hereroa puttkamerana*. Few other tree species are also found around the project area such as the *Acacia erioloba* (Camel thorn), *Acacia reficiens* (Reb umbrella thorn) and *parkinsonian africana* (Green-hair tree) dominate along the drainage

lines while *Faidherbia albida* (Ana boom), *Tamarix usneoides* (Tamarisk) and *Salvadora persica* (Mustard tree) which are mainly common along the Khan river (Burke, 2005).

There are two endemic plants species around the project area which are the *Lithops ruschiorum* and the *Adenia pechueli* (Burke, 2005). **Figure 11** show vegetation observed on the EPL during the site visit.

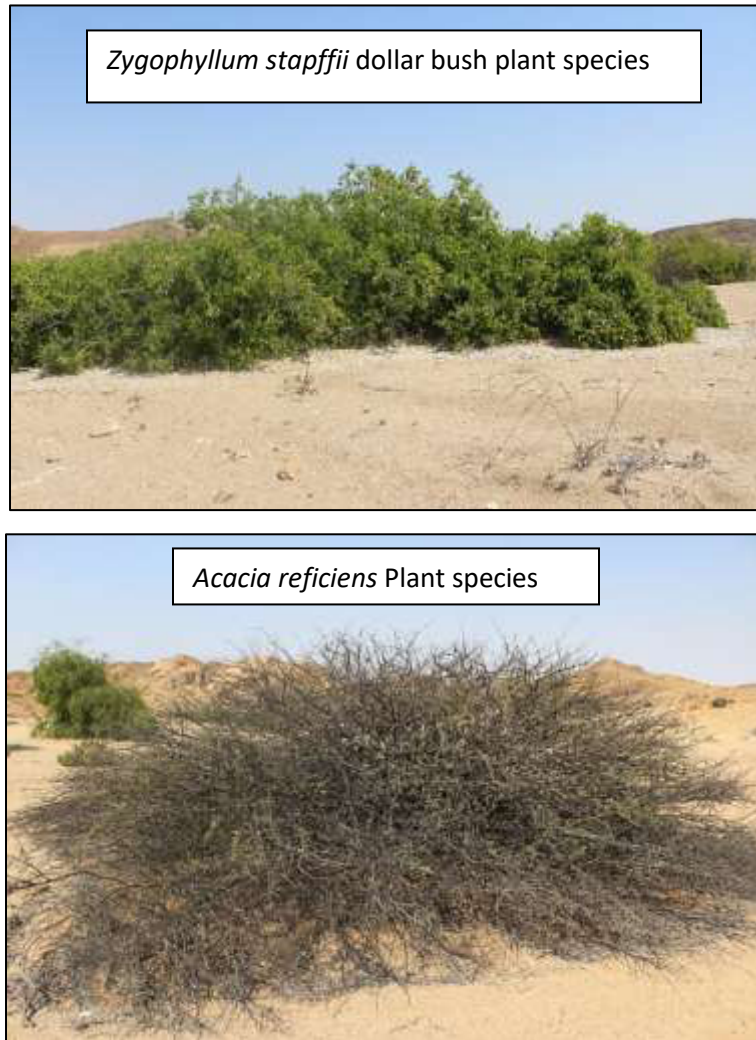


Figure 11: Types of typical vegetation type found within EPL 7011

Fauna

Namibia is a large, semi-arid to arid country in the south-western region of southern Africa. The general Arandis area is regarded as “low” in overall (all terrestrial species) diversity while the overall terrestrial endemism on the other hand is “moderate to high” (Mendelsohn et al. 2002). The overall diversity and abundance of large herbivorous mammals (big game) is viewed as “low” with 1-2 species while the overall diversity of large carnivorous mammals (large predators) is viewed as “average to high” with 4 species important of which brown hyena have “medium” densities (Mendelsohn et al. 2002) Wildlife animals that are found within the area of the EPL include Ostriches, (*Struthio camelus*), the world largest bird and wild cat (leopard or cheetah). However, none of these wild animals were observed during site visit.

5.5 Heritage and Archaeology

Archaeological remains in Namibia are protected under the National Heritage Act (27 of 2004) which makes provision for archaeological impact assessment of propose projects like these. The archaeology of the Central Namib has been greatly studied in some detail for other previous mining and exploration related projects, and the present assessment required only a site inspection as the basis of impact assessment. The site survey for EPL 7011 was undertaken on the 8th of September 2022, and it involved direct observation with archaeological site positions determined in the field by hand-held GPS *etrex 32*, documented and plotted on topographic maps. In the field, identified archaeological sites are assessed as to their significance and vulnerability, using two independent parallel scales devised for archaeological assessment in Namibia. **Table 4** below shows archaeological records which were identified during the site visit.

Table 4: Identified archaeological significances within EPL 7011

Waypoint	Coordinates	Description	Significance	Vulnerability
158	S 22 ^o 02' 33.9" E 14 ^o 23' 27.0"	Remnant of the rail embankment	3	3
159	S 22 ^o 29' 28.3" E 14 ^o 59' 37.0"	Rock shelter on a metamorphosed	3	3

		shale rock type. This shelter seems to be active probably being used by wild animals.		
160	S 22° 29' 28.2" E 14° 59' 37.7	Rock shelter with old Ostrich's poops	3	3
161	S 22° 29' 27.9" E 14° 59' 38.2	Rock shelter/Cave- This shelter is about 6m width and 2m high but looks to be inactive from animal activities etc.	3	3
162	S 22° 29' 54.8" E 14° 00' 14.9	Remnants of slabs for old camping site for miners	2	3
163	S 22° 30' 01.3" E 15° 00' 09.3"	Remnants of slabs for old camping site for miners. They are about 9 places/slabs occurring in the same locality	2	3
164	S 22° 28' 46.4" E 15° 00' 14.6"	Two Rock shelters	3	3

165	S 22° 28' 56.5" E 14° 59' 32.7"	Stone artifacts- A dense concentration of stone tools (a workshop)	3	3
-----	------------------------------------	--	---	---

5.6 Surrounding Land Uses

The EPL area lies within the //Gaingu Conservancy area (**Figure 12**). Therefore, the Proponent must ensure to enhance the conservation of biodiversity and the maintenance of the ecological integrity of the //Gaingu Conservancy. Furthermore, the EPL area lies within the RUL's AWA (**Figure 13**). **The Proponent is required to enter into a written agreement with affected landowners before exercising any rights conferred upon the EPL as per the Section 52 of the Minerals (Prospecting and Mining) Act No. 33 of 1992 and Section 2.2.3 of the Minerals Policy of Namibia.**

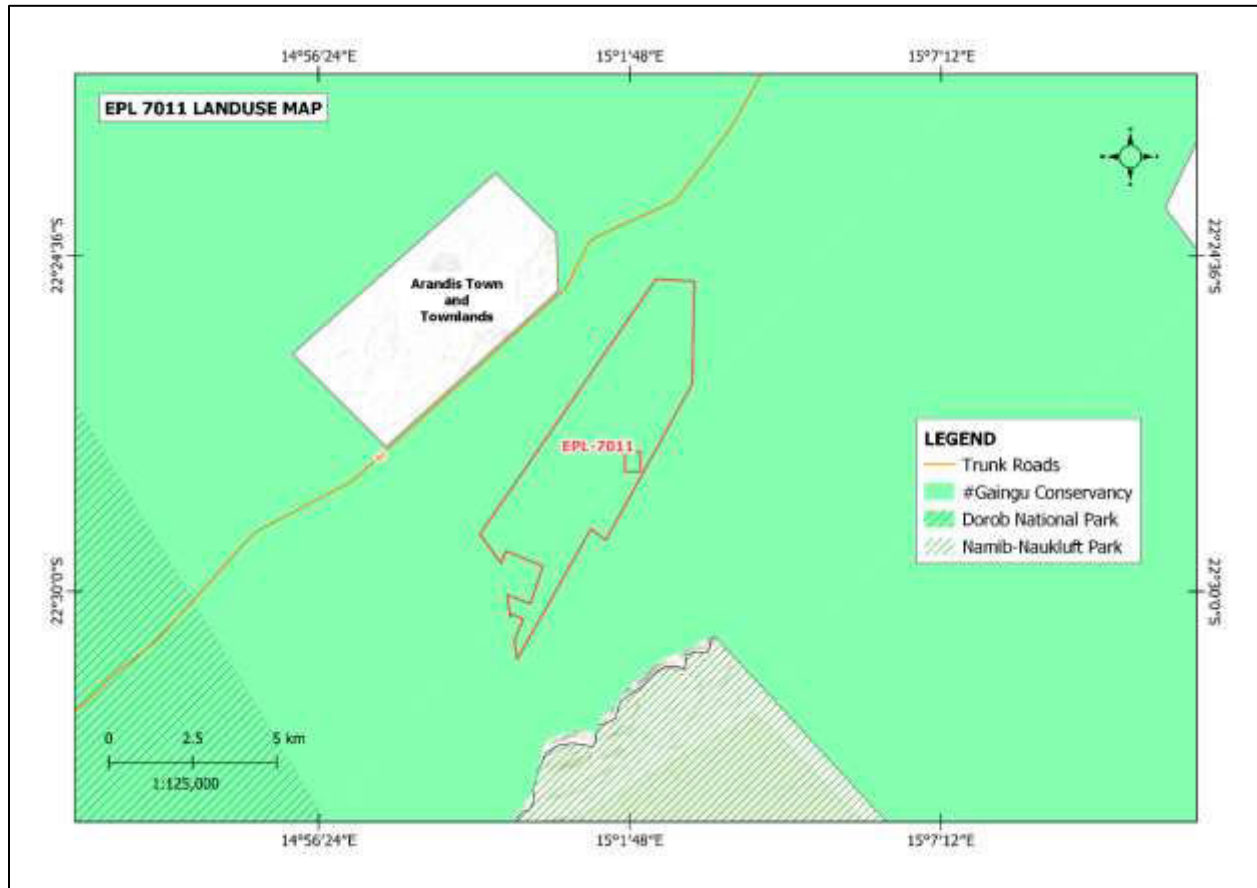


Figure 12: EPL 7011 Land Use Map

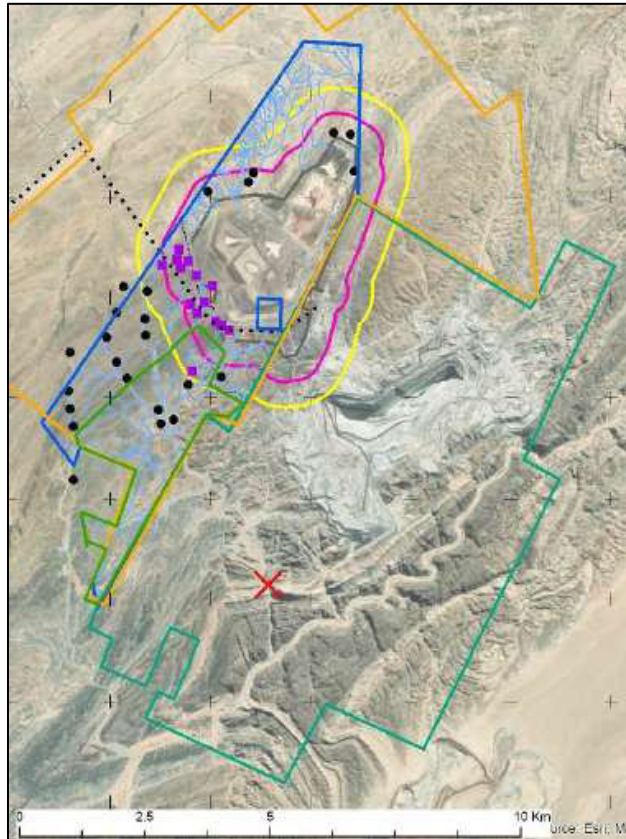


Figure 13: RUL Land use overlaid by EPL 7011

5.7 No-go zone exploration areas

The following aspects within the EPL No. 7011, are recommended that no exploration activities should be conducted:

- **River:** No exploration activities are permitted to be conducted within 100 m of any river within the EPL area. Therefore, the Mineral (Prospecting and Mining) Act (No. 33 of 1992), Section 52(1) should be adhered to.
- **Tailing Storage Facilities (TSF):** No exploration activities are permitted to be conducted within 1 km of the EPL area, Section 52 (1), Mineral (Prospecting and Mining) Act (No. 33 of 1992) must be adhered to.
- **Monitoring Boreholes:** There are monitoring boreholes within EPL 7011, which monitors the groundwater in connection to RUL operations. To avoid the influence of the monitoring

borehole's results, no exploration activities are permitted to be conducted within 100 m as per Section 52 (1), Mineral (Prospecting and Mining) Act (No. 33 of 1992).

- **RUL Mine Barrier:** EPL 7011 overlies the RUL mine barrier, no exploration within the RUL mine barrier is permitted, and no exploration activities must be carried out within 100 m buffer of mine barrier.
- **Archaeological Significant Sites:** To protect the heritage of the area, no exploration activities must be conducted within a radius of 500 m – 1 km of any identified archaeological significance within the EPL area.
- **Pipelines and other Infrastructure:** No exploration activities within 100 m will be permitted, within any pipelines on site, or within other RUL properties without their consent.

Alternative exploration

Taking into consideration the no-go zone areas for exploration activities within the EPL above; alternative areas to consider during the exploration phase has been identified by the consultant, in line with the exploration target area which has been identified by the Proponent (see **figure 14**). The figure below shows alternative areas for exploration activities within the project area (red circle), within the targeted area for EPL 7011.

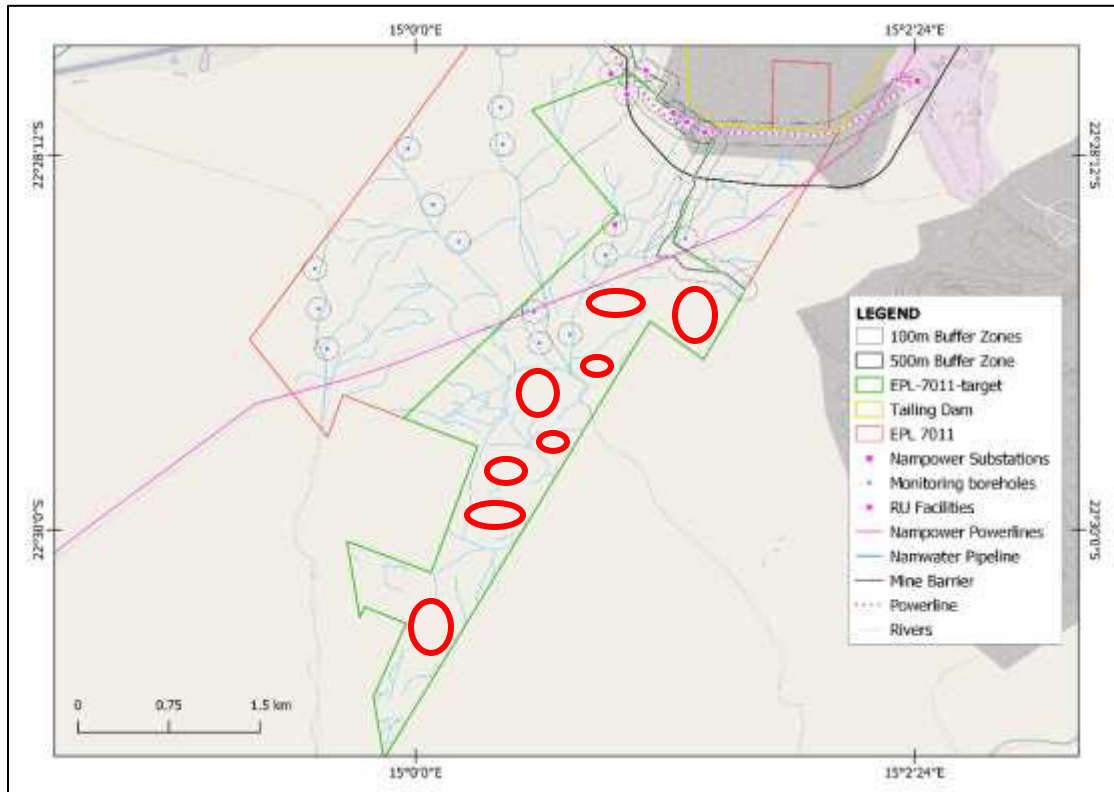


Figure 14: Shows alternative areas for exploration activities within EPL 7011

5.7 Socio-economic condition

Population of the Erongo Region

The Erongo Region covers an area of 63,586 km², which makes up 7.7 per cent of Namibia's total area of about 823,680 km². The population of Erongo Region was 150 809 (approximately 70 986 females and 79 823 males) in 2011, representing a population of 2.4 persons per square kilometer. Arandis population was 4 720 in 2011. (Namibia Statistics Agency, 2011).

Economy and infrastructure

Arandis is a town in the Erongo Region of western central Namibia. It has been called the Uranium Capital of the World as it is located just 15 km outside the world's largest open-pit uranium mine, the Rössing Uranium Mine. Besides Rössing, Arandis also serves the Husab and Trekkopje uranium mines.

Arandis is located about 57 km northeast of the coastal town of Swakopmund, 100 km from the port of Walvis Bay, about 2 km from the B2 main road, and is linked via road and railway to Windhoek, Swakopmund and Walvis Bay. The Arandis Railway Station exist as a crossing loop on the Trans-Namib Railway between Swakopmund and Usakos. Arandis is also linked to the rest of Namibia by air from Arandis Airport.

Services and Opportunities

Services and facilities in Arandis include accommodation facilities such as Bed & Breakfasts, and lodges, tourism cafés and restaurants, supermarkets, healthcare facilities, banking services, and transport infrastructure (road, rail, air). The town is considered safe and clean, with a low crime rate.

Arandis offers ample opportunities in economic growth - Uranium rush status, residential, commercial erven, industrial development (factories, warehouses), various SMEs and farming opportunities. Arandis sources its power supply from Erongo RED and obtain water from NamWater main water supply as well as from a desalination plant in the area.

6. PUBLIC CONSULTATION PROCESS

Public consultation is an important component of an Environmental Assessment (EA) process. It provides potential Interested and Affected Parties (I&APs) with an opportunity to comment on and raise any issues related to the project, for consideration as part of the assessment process. This assists the Environmental Assessment Practitioner (EAP) in identifying all potential impacts and to the extent to which further investigations are necessary. Public consultation can also aid in the process of identifying possible mitigation measures. Public consultation for this scoping study has been done in accordance with the EMA and its EIA Regulations.

6.1 Pre-identified and Registered Interested and Affected Parties (I&APs)

Relevant and applicable national, regional, and local authorities, local leaders, and other interested members of the public were identified. Pre-identified I&APs were contacted directly, while other parties were given a chance to register after project advertisement notices in the newspapers. Newspaper advertisements were placed in two widely-read national newspapers in the region. The project advertisement/announcement ran for two consecutive weeks. The summary of pre-identified and registered I&APs is listed in **Table 5** below and the complete list of I&APs is provided in **Appendix D**.

Table 5: Summary of Interested and Affected Parties (I&APs)

National (Ministries and State-Owned Enterprises)
Ministry of Environment, Forestry and Tourism
Ministry of Mines and Energy
Ministry of Health and Social Services
Regional, Local authorities
Erongo Regional Council
Arandis Town Council
//Gaingu Conservancy
General Public

Interested members of the public

6.2 Communication with I&APs

Regulation 21 of the EIA Regulations details the steps to be taken during a public consultation process and these have been used in guiding this process. Communication with I&APs regarding the proposed development was facilitated through the following means and in this order:

- A Background Information Document (BID) containing brief information about the proposed project was compiled and emailed to relevant Authoritative Ministries, and upon request, to all new registered Interested and Affected parties (I&APs).
- Project Environmental Assessment notices were published in The Namibian and New Era Newspapers (8 August 2022 and 15 August 2022), inviting members of the public to register as I&APs and to submit their comments/concerns.
- The consultation meeting was scheduled and held with interested parties on 8th August 2022 at Arandis Town Council.
- A 2nd consultation meeting was scheduled and held with the technical and management team of RUL on 03rd October 2022 in Arandis.
- The site visit assessment, observation, and comments and issues raised during the consultation meeting formed basis for the ESA Report and EMP.



Figure 15: Public notices placed at the Arandis Town Hall, Erongo Region



Figure 16: Public meeting held at Arandis Town Council Hall

6.3 Feedback from Interested and Affected Parties

Issues were raised by I&APs (from the consultation meeting) and via email. The issues raised have been noted and incorporated in the ESA Report and EMP. The summary of the key issues is presented in **Table 6** below.

Table 6: Summary of main issues and comments received during the public meeting

Issues	Concerns
Tailing Storage Facility (TSF) Stability	RUL is concerned that blasting activities in the vicinity of the TSF during potential future mining activities would likely impact the TSF stability.
Groundwater Quality	RUL is concerned that prospecting and exploration activities could damage the RUL boreholes network and supporting infrastructures.

Air Quality and Radiation Exposure	RUL is concerned that the workers involved with prospecting, exploration and future mining activities would be impacted by the TSF dust- fallout and radiation exposure emanating from the existing RUL operations.
------------------------------------	---

7. IMPACT IDENTIFICATION, ASSESSMENT AND MITIGATION MEASURES

7.1 Impact Identification

Proposed developments/activities are usually associated with different potential positive and/or negative impacts. For an environmental assessment, the focus is placed mainly on the negative impacts. This is done to ensure that these impacts are addressed by providing adequate mitigation measures such that an impact's significance is brought under control, while maximizing the positive impacts of the development. The potential positive and negative impacts that have been identified from the prospecting activities are listed as follow:

Positive impacts:

- Creation of jobs to the locals (primary, secondary and tertiary employment).
- Producing of a trained workforce and small businesses that can service communities and may initiate related businesses
- Boosts local economic growth and regional economic development.
- Opens up other investment opportunities and infrastructure-related development benefits

Negative impacts:

- Physical land/soil disturbance,
- Impact on local biodiversity (fauna and flora) and habitat disturbance,
- Potential impact on water resources and soils particularly due to pollution,
- Air quality issues: potential dust from surface excavation, and drilling,
- Potential occupational health and safety risks associated with the movement/operation of machinery and equipment on site,
- Vehicular traffic safety and impact on services infrastructure such as local roads,
- Vibrations and noise associated with drilling activities may be a nuisance to locals,
- Environmental pollution (waste generation)

- Impact on archaeological or cultural heritage resources,
- Potential social nuisance and conflicts between land owners/users and the Proponent.

7.2 Impact Assessment Methodology

The Environmental Assessment process primarily ensures that potential impacts that may occur from project activity are identified and addressed with environmentally cautious approaches and legal compliance. The impact assessment method used for this project is in accordance with Namibia's Environmental Management Act (No. 7 of 2007) and its Regulations of 2012, as well as the International Finance Corporation (IFC) Performance Standards.

The identified impacts are assessed in terms of scale/extent (spatial scale), duration (temporal scale), magnitude (severity) and probability (likelihood of occurring), as presented in **Table 7**, **Table 8**, **Table 9** and **Table 10**, respectively.

In order to enable a scientific approach to the determination of the environmental significance, a numerical value is linked to each rating scale. This methodology ensures uniformity and that potential impacts can be addressed in a standard manner so that a wide range of impacts are comparable. It is assumed that an assessment of the significance of a potential impact is a good indicator of the risk associated with such an impact. The following process will be applied to each potential impact:

- Provision of a brief explanation of the impact;
- Assessment of the pre-mitigation significance of the impact; and
- Description of recommended mitigation measures.

The recommended mitigation measures prescribed for each of the potential impacts contribute towards the attainment of environmentally sustainable operational conditions of the project for various features of the biophysical and social environment. The following criteria were applied in this impact assessment:

7.2.1 Extent (spatial scale)

Extent is an indication of the physical and spatial scale of the impact. **Table 7** shows rating of impact in terms of extent of spatial scale.

Table 7: Extent or spatial impact rating

Low (1)	Low/Medium (2)	Medium (3)	Medium/High (4)	High (5)
Impact is localized within the site boundary: Site only	Impact is beyond the site boundary: Local	Impacts felt within adjacent biophysical and social environments: Regional	Impact widespread far beyond site boundary: Regional	Impact extend National or over international boundaries

7.2.2 Duration

Duration refers to the timeframe over which the impact is expected to occur, measured in relation to the lifetime of the project. **Table 8** shows the rating of impact in terms of duration.

Table 8: Duration impact rating

Low (1)	Low/Medium (2)	Medium (3)	Medium/High (4)	High (5)
Immediate mitigating measures, immediate progress	Impact is quickly reversible, short term impacts (0-5 years)	Reversible over time; medium term (5-15 years)	Impact is long-term	Long term; beyond closure; permanent; irreplaceable or irretrievable commitment of resources

7.2.3 Intensity, Magnitude / severity

Intensity refers to the degree or magnitude to which the impact alters the functioning of an element of the environment. The magnitude of alteration can either be positive or negative. These ratings were also taken into consideration during the assessment of severity. **Table 9** shows the rating of impact in terms of intensity, magnitude or severity.

Table 9: Intensity, magnitude or severity impact rating

Type of criteria	Negative				
	H- (10)	M/H- (8)	M- (6)	M/L- (4)	L- (2)
Qualitative	Very high deterioration, high quantity of deaths, injury of illness / total loss of habitat, total alteration of ecological processes, extinction of rare species	Substantial deterioration, death, illness or injury, loss of habitat / diversity or resource, severe alteration or disturbance of important processes	Moderate deterioration, discomfort, partial loss of habitat / biodiversity or resource, moderate alteration	Low deterioration, slight noticeable alteration in habitat and biodiversity. Little loss in species numbers	Minor deterioration, nuisance or irritation, minor change in species / habitat / diversity or resource, no or very little quality deterioration.

7.2.4 Probability of occurrence

Probability describes the likelihood of the impacts actually occurring. This determination is based on previous experience with similar projects and/or based on professional judgment. **Table 10** shows impact rating in terms of probability of occurrence.

Table 10: Probability of occurrence impact rating

Low (1)	Medium/Low (2)	Medium (3)	Medium/High (4)	High (5)
Improbable; low likelihood; seldom. No known risk or vulnerability to natural or induced hazards.	Likely to occur from time to time. Low risk or vulnerability to natural or induced hazards	Possible, distinct possibility, frequent. Low to medium risk or vulnerability to natural or induced hazards.	Probable if mitigating measures are not implemented. Medium risk of vulnerability to natural or induced hazards.	Definite (regardless of preventative measures), highly likely, continuous. High risk or vulnerability to natural or induced hazards.

7.2.5 Significance

Impact significance is determined through a synthesis of the above impact characteristics. The significance of the impact “without mitigation” is the main determinant of the nature and degree of mitigation required. As stated in the introduction to this section, for this assessment, the significance of the impact without prescribed mitigation actions is measured.

Once the above factors (**Table 7, Table 8, Table 9** and **Table 10**) have been ranked for each potential impact, the impact significance of each is assessed using the following formula:

$$\text{SIGNIFICANCE POINTS (SP)} = (\text{MAGNITUDE} + \text{DURATION} + \text{SCALE}) \times \text{PROBABILITY}$$

The maximum value per potential impact is 100 significance points (SP). Potential impacts were rated as high, moderate or low significance, based on the following significance rating scale (**Table 11**).

Table 11: Significance rating scale

<i>Significance</i>	<i>Environmental Significance Points</i>	<i>Colour Code</i>
High (positive)	>60	H
Medium (positive)	30 to 60	M

Significance	Environmental Significance Points	Colour Code
Low (positive)	1 to 30	L
Neutral	0	N
Low (negative)	-1 to -30	L
Medium (negative)	-30 to -60	M
High (negative)	<-60	H

Positive (+): Beneficial impact

Negative (-): Deleterious/ adverse + Impact

Neutral: Impacts are neither beneficial nor adverse

For an impact with a significance rating of high (-ve), mitigation measures are recommended to reduce the impact to a medium (-ve) or low (-ve) significance rating, provided that the impact with a medium significance rating can be sufficiently controlled with the recommended mitigation measures. To maintain a low or medium significance rating, monitoring is recommended for a period of time to enable the confirmation of the significance of the impact as low or medium and under control.

The assessment of the exploration phases is done for pre-mitigation and post-mitigation.

The risk/impact assessment is driven by three factors:

Source: The cause or source of the contamination.

Pathway: The route taken by the source to reach a given receptor

Receptor: A person, animal, plant, eco-system, property or a controlled water source. If contamination is to cause harm or impact, it must reach a receptor.

A pollutant linkage occurs when a source, pathway and receptor exist together. Mitigation measures aim firstly, avoid risk and if the risk cannot be avoided, mitigation measures to minimize the impact are recommended. Once mitigation measures have been applied, the identified risk would reduce to lower significance (Booth, 2011).

This assessment focuses on the three project phases namely; prospecting, exploration (and possible analysis) and decommissioning. The potential negative impacts stemming from the proposed activities of the EPL are described, assessed and mitigation measures provided thereof. Further mitigation measures in a form of management action plans are provided in the Draft Environmental Management Plan.

7.3 Assessment of Potential Negative Impacts

The main potential negative impacts associated with the operation and maintenance phase are identified and assessed below:

7.3.1 Land Degradation and Loss of Biodiversity

Fauna: The drilling activities of the exploration project would result in land degradation, which could lead to habitat loss for a diversity of flora and fauna ranging from microorganisms to large animals and trees. Endemic species are most severely affected since even the slightest disruption in their habitat can result in extinction or put them at high risk of being wiped out.

The presence and movement of the exploration workforce and operation of project equipment and heavy vehicles would cause some disturbance on wildlife present on the explored areas. Disturbance, not only due to human and vehicle movements, but also potential illegal hunting of local wildlife by project related workers. This could lead to the loss or a number reduction of specific faunal species, which also impacts tourism in the community.

Un-rehabilitated and/or unfenced boreholes, trenches and exploration pits used for exploration (once they are no longer in use) may have long term impacts on faunal habitats in the area, e.g. wildlife may trip/fall into the holes/pits, causing injuries and potentially mortalities.

Flora: Direct impacts on flora mainly occur through clearing for the exploration access routes and associated infrastructure, and if there really is a need for new road construction, the Proponent should apply for this permit and must consult RUL.

Dust emissions from drilling may affect surrounding vegetation through the fall of dust. Some loss of vegetation is an inevitable consequence on the development.

Under the status, the impact can be of a medium significance rating. With the implementation of appropriate mitigation measures, the rating will be reduced to a low significance rating. The impact is assessed in **Table 12** below.

Table 12: Assessment of the impacts of exploration on biodiversity

Mitigation Status	Extent	Duration	Intensity	Probability	Significance
Pre mitigation	M: -3	M: -3	M: -6	M/H: 4	M: -48
Post mitigation	L/M: -2	L/M: -2	L/M: -4	L/M: 2	L: -16

Mitigations and recommendations to minimize the loss of biodiversity:

- The Proponent must avoid unnecessary removal of vegetation, to promote a balance between biodiversity and their operations.
- Vegetation found on the site, but not in targeted exploration sites must not be removed, but must be left to preserve biodiversity on the site.
- Shrubs or trees found along trenching, drilling, or sampling spots on sites must not be removed unnecessarily.
- Movement of vehicle and machinery must be restricted to existing roads and tracks, to prevent unnecessary damage to vegetation.
- No onsite vegetation must be cut or used for firewood related to the project's operations. The Proponent must provide firewood for his onsite camping workers from authorized firewood producer or seller.
- Design access roads appropriately in a manner that disturbs minimal vegetation as possible.
- Vegetation clearing to be kept to a minimum. The vegetation of the site is largely low and open and therefore vegetation clearing must only be applied where necessary and within the EPL footprint.
- Formulate and implement suitable and appropriate operational management guidelines for the cleared areas, and ensure to incorporate progressive rehabilitation measures within the guidelines.
- Workers must refrain from disturbing, killing or stealing farm animals and killing small soil and rock outcrops' species found on sites.
- Illegal hunting of wildlife from the EPL area is strictly prohibited.

- Environmental awareness on the importance of biodiversity preservation must be provided to the workers.

7.3.2 Generation of Dust (Air Quality)

Dust emanating from site access roads when transporting exploration equipment and supply (water) to and from site (time-to-time) may compromise the air quality in the area. Vehicular movements from heavy vehicles such as trucks could potentially create dust, even though not so severely. The hot and dry environment, hard and sandy nature of the substrate and low vegetation cover causes ambient fugitive dust levels. Additionally, activities carried out as part of the exploration works such as drilling would contribute to the dust levels in the air. The medium significance of this impact can be reduced to a low significance rating by properly implementing mitigation measures. The impact is assessed in **Table 13** below.

Table 13: Assessment of the impacts of exploration on air quality

Mitigation Status	Extent	Duration	Intensity	Probability	Significance
Pre mitigation	M: -3	M: -3	M/L: -4	M/H: 4	M: -40
Post mitigation	L: -1	L: -1	L: -2	L: -1	L: -4

Mitigations and recommendations to minimize dust:

- Exploration vehicles must not drive at a speed more than 40 km/h, in order to avoid dust generation around the area.
- The Proponent must ensure that the exploration schedule is limited to the given number of days of the week, and hours of the day, to keep the vehicle-related dust level minimal in the area.
- If and when the project reaches the advanced stages of exploration producing high levels of dust, a reasonable amount of water must be used on gravel roads, using regular water sprays on gravel routes and near exploration sites to suppress the dust that may be emanating from certain exploration areas on the EPL.

7.3.3 Water Usage

Water resources may be impacted by project developments/activities through pollution (water quality). The impact of the project activities on the resources would be dependent on the water volumes required for each project activity. Commonly exploration activities use a lot of water, mainly for drilling. However, this depends on the target mineral, and the type of drilling methods employed (diamond drilling is more water-consuming compared to reverse circulation drilling).

Reverse Circulation drilling method will be employed for the project drilling activities, and it requires about 4,000 litres/month. Given the low groundwater potential of the project site area, the Proponent might need to cart in water volumes from outside the area and store it in industry standard water reservoirs/tanks on site. The exploration period is temporally limited, therefore, the impact will only last for the duration of the exploration activities and cease upon completion of works.

Without the implementation of any mitigation measures, the impact can be rated as medium, but upon effective implementation of the recommended measures, the impact significance would be reduced to low as presented in **Table 14** below.

Table 14: Assessment of the project impact on water resource use and availability

Mitigation Status	Extent	Duration	Intensity	Probability	Significance
Pre mitigation	M: -3	M/H: -4	L/M: -4	M/H: -4	M: -44
Post mitigation	L/M: -2	L/M: -2	L: -2	L/M: -2	L: -12

Mitigations and recommendations to manage water use:

- Water reuse/recycling methods should be implemented as far as practicable, e.g. water used to cool off exploration equipment can be captured and used for the cleaning of project equipment, if possible.
- Water storage tanks must be inspected daily to ensure that there is no leakage, resulting in wasted water on site.

- Water conservation awareness and training on saving measures must be provided to all the project workers, to ensure accountability and so that they understand the importance of conserving water.

7.3.4 Soil and Water Resources Pollution

The proposed exploration activities are associated with a variety of potential pollution sources (i.e., lubricants, fuel, and wastewater), which may contaminate/pollute soils and eventually surface and groundwater, since the EPL is vulnerable to pollution. The anticipated potential source of pollution to water resources from the project activities would be hydrocarbons (oil) from project vehicles, machinery, and equipment as well as potential wastewater/effluent from exploration related activities.

The spills (depending on volume) from these machinery, vehicles and equipment could infiltrate into the ground and pollute the fractured or faulted aquifers on site, and with time, reach farther groundwater systems. However, it must be noted that the scale and extent/footprint of the activities where potential sources of pollution will be handled is relatively small. Therefore, the impact is moderately low.

Pre-mitigation measure implementation, the impact significance is moderate and upon implementation, the significance will be reduced to low. The impact is assessed in **Table 15** below.

Table 15: Assessment of the project impact on soils and water resources (pollution)

Mitigation Status	Extent	Duration	Intensity	Probability	Significance
Pre mitigation	M: -3	M/H: -4	M: -6	M: -3	M: -39
Post mitigation	L: -1	L: -1	L: -2	L/M: -2	L: -8

Mitigations and recommendations to manage soil and water pollution:

- Spill control preventive measures must be in place on site to management soil contamination, to minimize and/or prevent the contamination from reaching water

resources bodies. Some of the soil control preventive measures that can be implemented include:

- Identification of oil storage locations on site and allocation of drip trays and other tools for removal of polluted soils, suitable for that specific surface (soil or hard rock cover) on the sites.
- Maintain equipment and fuel storage tanks to ensure that they are in good condition to prevent leaks and spills.
- The oil storage and use locations must be visually inspected regularly for container or tank condition and spills.
- All project employees must be sensitized to the impacts of soil pollution and advised to follow appropriate fuel delivery and handling procedures.
- The Proponent must develop and prepare countermeasures to contain, clean up, and mitigate the effects of an oil spill. This includes keeping spill response procedures and a well-stocked cache of supplies easily accessible.
- Ensure employees receive basic Spill Prevention, Control, and Countermeasure (SPCC) Plan training.
- Project machinery and equipment must be equipped with drip trays where possible, to contain possible oil spills during operation on site.
- Polluted soil must be removed immediately and put in a designate waste type container for later disposal.
- Drip trays must be readily available and monitored to ensure that accidental fuel spills along the tank trailer path/route around the exploration sites are cleaned on time (soon after the spill has happened).
- Polluted soils must be collected and transported away from the site to an approved and appropriately classified hazardous waste treatment facility.
- Washing of equipment contaminated hydrocarbons, as well as the washing and servicing of vehicles must take place at a dedicated area, where contaminants are prevented from contaminating soil or water resources.
- The portable chemical toilets must be emptied timeously and treated at a wastewater treatment facility.
- No exploration must be conducted within 100 m within river channels within the EPL area.

- No exploration activities must be conducted within 100 m of the monitoring boreholes or any water sources infrastructure within the EPL area.

7.3.5 Waste Generation

During the prospecting and exploration phase, domestic and general waste is produced on site. If the generated waste is not disposed of in a responsible way, land pollution may occur on the EPL or around the site. Improper handling, storage and disposal of hydrocarbon products and hazardous materials at the site may lead to soil and groundwater contamination, in case of spills and leakages. Any hazardous waste that may have an impact on the animals, vegetation, water resources and the general environment should be handled cautiously. Without any mitigation measures, the general impact of waste generation has a medium significance. The impact rating will decrease to low significance, upon implementing the mitigation measures. The assessment of this impact is given in **Table 16**.

Table 16: Assessment of waste generation impact

Mitigation Status	Extent	Duration	Intensity	Probability	Significance
Pre mitigation	L/M: -2	L/M: -2	M: -6	M: -3	M: -30
Post mitigation	L: -1	L: -1	L: -2	L/M: -2	L: -8

Mitigations and recommendations to waste management:

- Workers must be sensitized to dispose of waste in a responsible manner at areas provided for the purposes and not to litter.
- After each daily works, the Proponent must ensure that there is no waste left on the sites.
- All domestic and general operational waste produced daily must be contained onsite until such that time it will be transported to designated waste sites.

- Biodegradable and non-biodegradable wastes must be stored in separate containers and collected regularly for disposal at a recognized landfill/dump site.
- No waste may be buried or burned on site or anywhere else.
- The exploration site must be equipped with separate waste bins for hazardous and general/domestic waste.
- Sewage waste must be stored as per the portable chemical toilets supplied on site and regularly disposed of at the nearest treatment facility.
- Oil spills must be taken care of by removing and treating soils affected by spills.
- A penalty system for irresponsible disposal of waste on site and anywhere in the area should be implemented.
- Careful storage and handling of hydrocarbons on site is essential.
- Potential contaminants such as hydrocarbons and wastewater must be contained on site and disposed of in accordance with municipal wastewater discharge standards so that they do not contaminate surrounding soils and eventually groundwater.
- An emergency plan must be available for major/minor spills at the site during operation activities (with consideration of air, groundwater, soil, and surface water) and during the transportation of the product(s) to the sites.

7.3.6 Occupational Health and Safety Risks

Project personnel (workers) involved in the exploration activities may be exposed to health and safety risks associated with the dust emanating from the TSF of RUL. This also refers to accidental injury, owing to either minor (i.e., superficial physical injury) or major (i.e., involving heavy machinery or vehicles) accidents. The site safety of all personnel will be the Proponent's responsibility and should be adhered to as per the requirements of the Labour Act (No. 11 of 2007) and the Public Health Act (No. 36 of 1919). The heavy vehicle, equipment and fuel storage area should be properly secured to prevent any harm or injury to the Proponent's personnel or local domestic animals.

The use of heavy equipment, especially during drilling and the presence of hydrocarbons on sites may result in accidental fire outbreaks. This could pose a safety risk to the project personnel and equipment. If machinery and equipment are not properly stored, the safety risk may be a concern for project workers.

The impact is probable and has a medium significance rating. However, with adequate mitigation measures, the impact rating will be reduced to low. This impact is assessed in **Table 17** below and mitigation measures provided.

Table 17: Assessment of the impacts of exploration on health and safety

Mitigation Status	Extent	Duration	Intensity	Probability	Significance
Pre mitigation	M: -3	M: -3	M: -6	M/H: -4	M: -48
Post mitigation	L/M: -2	L/M: -2	L: -2	L/M: -2	L: -12

Mitigations and recommendations to minimize health and safety issues:

- The operations must comply with the Labour Act’s Health and Safety Regulations.
- If necessary, and according to the amount of labour required for works, the Proponent must commit to and make provision for medical check-up for all the workers at site to monitor the impact of project related activities on the health of workers.
- As part of their induction, the project workers must be provided with an awareness training of the risks of mishandling equipment and materials on site as well as health and safety risk associated with their respective jobs.
- When working on site, employees must be properly equipped with adequate personal protective equipment (PPE) such as coveralls, gloves, safety boots, earplugs, dust masks, safety glasses, and hard hats.
- Heavy vehicle, equipment and fuel storage site must be properly secured, and appropriate warning signage placed where visible.
- Drilled boreholes that are no longer in use after being drilling should be properly marked for visibility and capped/closed off.
- Ensure that after completion of exploration holes and trenches, drill cuttings are put back into the hole and the holes filled and levelled, and trenches backfilled.
- An emergency preparedness plan must be compiled, and all personnel appropriately trained.

- Workers must not be allowed to drink alcohol prior to and during working hours nor allowed on site when under the influence of alcohol as this may lead to mishandling of equipment which results into injuries and other health and safety risks.
- The site areas that are considered temporary risks must be equipped with cautionary signs.
- When working on the exploration site, all exploration personnel will be outfitted with the necessary respiratory gear. This includes wearing a dust mask.
- Only employees who are wearing personal protective equipment (PPE) are permitted to visit the exploration site. This includes the overall, safety boots, protective hat and glasses;
- The exploration team will receive hygiene training / induction, as it is crucial to prevent ingesting radioactive elements. This must include a training on how to wash their hands on regular base; encouraging them to dine in a sanitary environment;
- Warning signs must be posted all around the exploration site.
- Employees must be kitted with Dosimeters to ensure that no harmful doses of radiation are received over a given period of time.
- Employees must be kitted with respiratory protective equipment and general protective equipment to protect against dust.

7.3.7 Vehicular Traffic Use and Safety

The district roads are the main transportation routes for all vehicular movement in the area and provide access to the EPL and connect the project area to other towns such as Swakopmund, Walvis Bay and Arandis Town. Therefore, traffic volume will increase on these district roads during exploration as the project would need a delivery of supplies and services on site. These service and supplies will include but are not limited to water, waste removal, procurement of exploration machinery, equipment, and others.

Depending on the project needs, trucks, and medium and small vehicles will be frequenting the area to and from exploration sites on the EPL. This would potentially increase slow moving heavy vehicular traffic along these roads. The impact would be felt by the local road users such as those accessing farms (via local access gravel and single-track roads). This would add additional pressure on the roads.

However, the exploration related heavy trucks will only be transporting materials and equipment to and from site, limited number of times a month during exploration. Therefore, the risk is anticipated to be short-term, not frequent, and therefore of medium significance. Pre-mitigation, the impact can be rated medium and with the implementation of mitigation measures, the significance will be low as assessed in **Table 18** below.

Table 18: Assessment of the impacts of exploration on road use (vehicular traffic)

Mitigation Status	Extent	Duration	Intensity	Probability	Significance
Pre mitigation	M: -3	M/H: -4	L/M: -4	M/H: -4	M: -44
Post mitigation	L/M: -2	L/M: -2	L: -2	L/M: -2	L: -12

Mitigations and recommendations to minimize impact on road safety and related vehicular traffic issues:

- The transportation of exploration materials, equipment and machinery must be limited, in order to reduce the pressure on local roads.
- Heavy truck loads must comply with the maximum allowed speed limit for respective vehicles while transporting material and equipment/machinery on the public and access roads.
- Any water carting schedules must be set up efficiently to ensure the number of water-carting vehicles on local roads is limited.
- Drivers of all project vehicles must be in possession of valid and appropriate driving Licenses and adhere to road safety rules.
- Drivers must drive slowly (40km/hour or less) and be on the lookout for wildlife as well as residents/travelers.
- The Proponent must ensure that the site access roads are well equipped with temporary road signs to cater for vehicles travelling to and from site throughout the project's life cycle.
- Project vehicles must be in a road worthy condition and serviced regularly to avoid accidents owing to mechanical faults.
- Vehicle drivers must only make use of designated site access roads as provided and agreed.

- Vehicle’s drivers must not be allowed to operate vehicles while under the influence of any intoxicants.
- No heavy trucks or project related vehicles must be parked outside the project site boundary or demarcated areas for such purpose.
- To control traffic movement on site, deliveries from and to site should be carefully scheduled. This must optimally be during weekdays and between the hours of 8am and 5pm.
- The site access road(s) must be upgraded to an unacceptable standard to be able to accommodate project related vehicles.

7.3.8 Noise and vibrations

Prospecting and exploration work (especially drilling) may be a nuisance to surrounding communities due to the noise produced by the activity. Excessive noise and vibrations can be a health risk to workers on site. The exploration equipment used for drilling on site is of medium size and the noise level is bound to be limited to the site only, therefore, the impact likelihood is minimal. Without any mitigation, the impact is rated as of medium significance. To change the impact significance from the pre-mitigation significance to low rating, the mitigation measures should be implemented. This impact is assessed in **Table 19** below.

Table 19: Assessment of the impacts of noise and vibrations from exploration

Mitigation Status	Extent	Duration	Intensity	Probability	Significance
Pre mitigation	L/M: -2	L/M: -2	M: -6	M/H: -3	M: -30
Post mitigation	L: -1	L/M: -2	L: -2	L/M: -2	L: -10

Mitigations and recommendations to minimize noise:

- Noise from operations’ vehicles and equipment on the sites must be at acceptable levels.
- The exploration operational times must be set such that no exploration activity is carried out during the night or very early in the mornings.

- Exploration hours must be restricted to between 08h00 and 17h00, or the hours agreed upon by the Proponent and landowner, to avoid noise and vibrations generated by exploration equipment and the movement of vehicles before or after hours.
- When operating the drilling machinery onsite, workers must be equipped with personal protective equipment (PPE) such as earplugs to reduce exposure to excessive noise.

7.3.9 Disturbance to Archaeological and Heritage resources

The archaeological site visit conducted on 08 August 2022 revealed that there are historical buildings and objects from historical exploration/mining activity conducted with the EPL. In the unlikely event that archaeological traces are exposed during site works, the expected nature of impact would be in the form of direct physical disturbance or destruction. The expected magnitude of this impact would be low. Due to the fact that impacts on archaeological sites are irreversible, these would be medium, with a local spatial scale. The consequence of the impact would be localized, and its significance would be low. The interpretation of this assessment would indicate a low significance, indicating that the risk of archaeological impact is so low as to have no influence on the project decision. The impact is assessed in **Table 20**.

Table 20: Assessment of the impacts of exploration on archaeological & heritage resources

Mitigation Status	Extent	Duration	Intensity	Probability	Significance
Pre mitigation	M: -3	M: -3	M: -6	M/H: -4	M: -48
Post mitigation	L/M: -2	L/M: -2	L: -2	L/M: -2	L: -12

Mitigations and recommendations to minimize impact on archaeological and heritage resources:

- If any archaeological material or human burials are uncovered during the course of prospecting or exploration activities, then work in the immediate area must be halted, the find would need to be reported to the heritage authorities and may require inspection by an archaeologist.
- A “No-Go-Area” must be put in place where there is evidence of sub-surface archaeological materials, archaeological site, historical, rock paintings, cave/rock shelter

or past human dwellings. It can be a demarcation by fencing off or avoiding the site completely by not working closely or near the known site. The ‘No-Go Option’ might have a neutral impact significance.

- On-site personnel (s) and contractor crews must be sensitized to exercise and recognize “chance finds heritage” in the course of their work.
- During the prospecting and exploration works, it is important to take note and recognize any significant material being unearthed, and making the correct judgment on which actions should be taken.
- If there is a possibility of encountering or unearthing of archaeological materials, then it is better to change the layout design so as to avoid the destruction that can occur.
- Direct damage to archaeological or heritage sites should be avoided as far as possible and, where some damage to significant sites is unavoidable, scientific/historical data should be rescued.
- All ground works must be monitored and where any stratigraphic profiles in context with archaeological material are exposed, these must be recorded, photographed and coordinates taken.
- The footprint impact of the proposed prospecting and exploration activities must be kept to minimal to limit the possibility of encountering chance finds within the EPL boundaries.
- A landscape approach of the site management must consider culture and heritage features in the overall planning of exploration infrastructures within and beyond the License/EPL boundaries;
- An archaeologist, Heritage specialist or a trained site manager must be on-site to monitor all significant earth moving activities that may be implemented as part of the proposed project activities.
- When there is removal of topsoil and subsoil on the site for exploration purposes, the site must be monitored for subsurface archaeological materials by a qualified Archaeologist or site manager.
- Show overall commitment and compliance by adapting “minimalistic or zero damage approach” throughout the exploration activities.
- In addition to these recommendations above, there must be a controlled movement of the people i.e. a contractor, exploration crews, equipment, setting up of camps and everyone else involved in the prospecting and exploration activities. This is recommended to limit

the proliferation of informal pathways, gully erosion and disturbance to surface and sub-surface artifacts such as stone tools and other buried materials, etc.

- There must be a controlled movements of heavy loads such as abnormal vehicles and kinds of heavy duty machineries within the EPL. This means avoiding chances of crossing paths that may lead to the destruction of on and sub-surface archaeological materials.
- It is essential that cognizance be taken of the larger historical landscape of the area to avoid the destruction of previously undetected heritage sites. Should any previously undetected heritage or archaeological resources be exposed or uncovered during exploration phases of the proposed project, these should immediately be reported to the heritage specialist or heritage authority (National Heritage Council of Namibia).
- The Proponent and Contractors must adhere to the provisions of Section 55 of the National Heritage Act in event significant heritage and culture features are discovered in the course of exploration works.
- Whoever is going to be in charge of mitigation and monitoring measures must have the authority to stop any exploration or construction activities that is in contravention with the National Heritage Act of 2004 and National Heritage Guidelines as well as the overall project EMP.

7.3.10 Social Nuisance: Local Property intrusion and Disturbance or Damage

The presence of project personnel in the area may lead to social annoyance to the local community. This could particularly be a concern if some workers enter or damage local private or public property. The private property could be houses, fences, vegetation, or wildlife, or any properties of economic or cultural value to the local land owners/users. The unpermitted and unauthorized entry to private property may cause clashes between the affected property (land) owners and the Proponent.

Pre-implementation of mitigation measures, the impact is rated as of medium significance. However, upon mitigation (post-mitigation), the significance will change from medium to low rating. The impact is assessed below (**Table 22**).

Table 21: Assessment of social impact of community property damage or disturbance

Mitigation Status	Extent	Duration	Intensity	Probability	Significance
--------------------------	---------------	-----------------	------------------	--------------------	---------------------

Pre mitigation	M: -3	M: -3	M: -6	M/H: -4	M: -48
Post mitigation	L: -1	L: -1	M/L: -4	M/L: -2	L: -12

Mitigations and recommendation to minimize the issue of damage to or intrusion of properties:

- The Proponent must inform their workers on the importance of respecting property by refraining from property intrusion or vandalism, and poaching or snaring of wildlife.
- Any workers or site employees found guilty of intruding private property must have dealt with as per their employer' (Proponent)'s code of employment conduct.
- The project workers must be advised to respect the community and local's private property, values, and norms.
- No worker must be allowed to wander or loiter on private property without permission.
- The cutting down or damaging of vegetation belonging to the affected I&APs or neighbours is strictly prohibited.
- Conducting exploration activities with the Mine barrier of RUL is prohibited.
- No exploration activities are permitted to be conducted within a radius of 100 m of RUL properties (water sources and related infrastructure).
- No exploration activities are permitted to be conducted within 1 km of the TSF for RUL.

7.4 Cumulative Impacts Associated with Proposed Exploration

According to the International Finance Corporation (2013), cumulative impacts are defined as “those that result from the successive, incremental, and/or combined effects of an action, project, or activity (collectively referred to in this document as “developments”) when added to other existing, planned, and/or reasonably anticipated future ones”.

Similar to many other exploration projects, cumulative impacts to which the proposed project and associated activities potentially contribute are:

- **Impact on road infrastructure:** The proposed exploration activity contributes cumulatively to various activities such as existing prospecting and mining activities and travelling associated with tourism and local daily routines. The contribution of the proposed project to this impact is however not considered significant given the short duration, and local extent (site-specific) of the intended mineral exploration activities.
- **The use of water:** While the contribution of this project will not be significant, mitigation measures to reduce water consumption during exploration are essential.

7.5 Mitigations and Recommendations for Rehabilitation

The rehabilitation of explored (disturbed) sites will include but not be limited to the following:

- Backfilling of trenches and/or pits in such a way that subsoil is replaced first, and topsoil is replaced last.
- Levelling of stockpiled topsoil. This will be done to ensure that the disturbed sites are left as close to their original state as much as possible.
- Closing off and capping of all exploration drilling boreholes to ensure that they do not pose a risk to people and animals in the area. The boreholes should not only be filled with sand alone, as wind will scour the sand and re-establish the holes.
- Removal of exploration equipment and vehicles from the site. Transporting all machinery and equipment as well as vehicles to designated offsite storage facilities.
- Clean up of site work areas and transporting the recently generated waste to the nearby approved waste management facility (as per agreement with the facility operator/owner).

8. CONCLUSIONS AND RECOMMENDATIONS

8.1 Conclusions

It is crucial for the Proponent and their contractors to effectively implement the recommended management and mitigation measures, in order to protect both the biophysical and social environment throughout the project duration. All these would be done with the aim of promoting environmental sustainability while ensuring a smooth and harmonious existence of the project activities in the host community and environment at large. This is to ensure that all potential impacts identified in this study and other impacts that might arise during implementation, are properly identified in time and addressed. Lastly, may the ECC be issued, the Proponent will be expected to be compliant with the ECC conditions as well as legal requirements governing mineral exploration and related activities.

8.2 Recommendations

The potential positive and negative impacts of the proposed exploration activities on EPL No. 7011 were identified, assessed and appropriate management and mitigation measures (to negative impacts) made thereof, for implementation by the Proponent, their contractors and all project employees.

Most of the potential impacts were found to be of medium rating significance. With the effective implementation of the recommended management and mitigation measures, this will particularly see the reduction in the significance of adverse impacts that cannot be avoided completely (from medium rating to low). To maintain the desirable rating, the implementation of management and mitigation measures should be monitored by the Proponent directly, or by a project Environmental Health and Safety Officer (EHS). The monitoring of this implementation will be carried out to maintain a low significance rating, and also ensure that all potential impacts identified in this study and other impacts that might arise during implementation are properly identified in time and addressed right away.

The Environmental Consultant is confident that the potential negative impacts associated with the proposed project activities can be managed and mitigated by the effective implementation of the recommended management and mitigation measures, and with more effort and commitment directed towards monitoring the implementation of these measures.

It is therefore, recommended that in the event of ECC issuance, the proposed prospecting and exploration activities may be granted an Environmental Clearance Certificate, provided that:

- All the management and mitigation measures provided herein are effectively and progressively implemented.
- All required permits, Licenses and approvals for the proposed activities should be obtained as required. These include permits and Licenses for land use access agreements to explore and ensuring compliance with these specific legal requirements.
- The Proponent and all their project workers or contractors comply with the legal requirements governing their project and its associated activities and ensure that project permits and or approvals required to undertake specific site activities are obtained and renewed as stipulated by the issuing authorities.
- Sites where exploration activity has ceased are rehabilitated, as far as practicable, to their pre-exploration state.

9. REFERENCES

Booth, P. (2011). Environmental Conceptual Site Model Exercise: Source – pathway – receptor. WSP Global: Semantic Scholar.

Burke, A. (2005) Biotope mapping, reconstruction of the pre-mining situation and assessment of biodiversity value. Report for Rössing Uranium Ltd, EnviroScience Windhoek

Cunningham, P.L. (2022). Vertebrate fauna and flora expected in the EPL- 8531 – Arandis area Unpublished Report, Excel Dynamic Solutions (Ltd) Pty, Windhoek.

Geological Survey of Namibia (2015). Strategic Environmental Management Plan (SEMP) for the Central Namib Uranium Mining Province, 2013 Annual Report. Ministry of Mines and Energy, Windhoek, Republic of Namibia

Gunhild von Oertzen (2015). Risk assessment on Rössing Uranium mine's tailings dust (technical report)

Mendelsohn, J. (2003). Atlas of Namibia: A Portrait of the Land and its People. Windhoek: The Ministry of Environment and Tourism of Namibia.

NSA. (2011). Retrieved from <https://digitalnamibia.nsa.org.na/>

NSA. (2011). Digital Namibia: Namibia statistics of Namibia. Retrieved February 17, 2022, from <https://digitalnamibia.nsa.org.na/>

Rössing Uranium Limited (RUL) (2021). Environmental Management Plan (EMP), Retrieved 17 September 2022 from [Microsoft Word - JE20MMP011 Environmental Management Plan 2020 \(minedocs.com\)](https://minedocs.com/)