


Project Name:	<p align="center"><b>BACKGROUND INFORMATION DOCUMENT FOR THE PROPOSED CONSTRUCTION OF FACILITIES AND STORAGE AND HANDLING OF OIL AND PETROLEUM PRODUCTS IN ARIAMSVLEI, KARAS DISTRICT</b></p>
The Proponent:	<p align="center"><b>XBFS (Extreme Bulk Fuel Services) P.O. Box 4152 Walvis Bay</b></p>
Prepared by:	<div data-bbox="555 860 1445 1200" style="border: 1px solid black; padding: 10px;">  <p data-bbox="721 967 983 1057"><b>Green Earth</b> ENVIRONMENTAL CONSULTANTS</p> <p data-bbox="571 1124 1445 1191">1<sup>st</sup> floor Bridgeview Offices &amp; Apartments, No. 4 Dr Kwame Nkrumah Avenue, Klein Windhoek, Namibia PO Box 6871, Ausspannplatz, Windhoek</p> </div>
Release Date:	<p align="center">October 2019</p>
Consultant:	<p align="center">C. Du Toit C. Van Der Walt Cell: 081 127 3145 Fax: 061 248 608 Email: <a href="mailto:charlie@greenearthnamibia.com">charlie@greenearthnamibia.com</a></p>

## **Table of Contents**

1. Introduction .....	3
2. Project location and description.....	3
3. Project Proposal.....	9
4. Bulk Services and Infrastructure Provision .....	10
4.1. Access Road .....	10
4.2. Water supply .....	10
4.3. Electricity reticulation .....	10
4.4. Sewage disposal.....	11
4.5. Solid waste disposal/refuse removal .....	11
5. National Legislation .....	11
6. Purpose of the Environmental Assessment Project .....	11
7. Aims of the Impact Process .....	12
8. Methodology .....	12
9. Environmental and Planning Issues Identified .....	12
10. Public Involvement Program .....	13
11. Public Notices .....	14

## **List of Figures**

<i>Figure 1: Location of Ariamsvlei .....</i>	<i>4</i>
<i>Figure 2: Locality Plan of Project Site.....</i>	<i>5</i>
<i>Figure 3: Locality Plan of Project Site on Photo.....</i>	<i>6</i>
<i>Figure 4: Project Site Map .....</i>	<i>7</i>
<i>Figure 5: Project Site Map on Photo .....</i>	<i>8</i>

**THE FOLLOWING IS A BACKGROUND INFORMATION DOCUMENT FOR THE ENVIRONMENTAL IMPACT ASSESSMENT AND ENVIRONMENTAL MANAGEMENT PLAN TO OBTAIN AN ENVIRONMENTAL CLEARANCE FOR THE PROPOSED CONSTRUCTION OF FACILITIES AND STORAGE AND HANDLING OF OIL AND PETROLEUM PRODUCTS IN ARIAMSVLEI, KARAS DISTRICT**

**1. Introduction**

**Green Earth Environmental Consultants** have been appointed by XBFS (Extreme Bulk Fuel Services) to attend to and complete an Environmental Impact Assessment (EIA) and Environmental Management Plan (EMP) in order to obtain an Environmental Clearance Certificate for the proposed construction of facilities and storage and handling of oil and petroleum products in Ariamsvlei, Karas District as per the requirements of the Environmental Management Act (No. 7 of 2007) and the Environmental Impact Assessment Regulations (GN 30 in GG 4878 of 6 February 2012).

The Background Information Document (BID) serves to convey information regarding the proposed project to Interested and Affected Parties (I&APs) to allow them the opportunity to comment on the proposed project.

This document contains the following information:

- A brief background on the proposed project
- The approach to the environmental assessment process

**2. Project location and description**

It is the intension of XBFS to construct and operate a fuel station on Portion 1 of the Remainder of Portion 36 of the Farm Ukumas, located in the Village of Ariamsvlei, Karas District. The project site is located next to the B3 Road leading from Karasburg to Upington. The project site is ±3.1 hectares in extent. See below locality of project site:



Figure 1: Location of Ariamsvlei

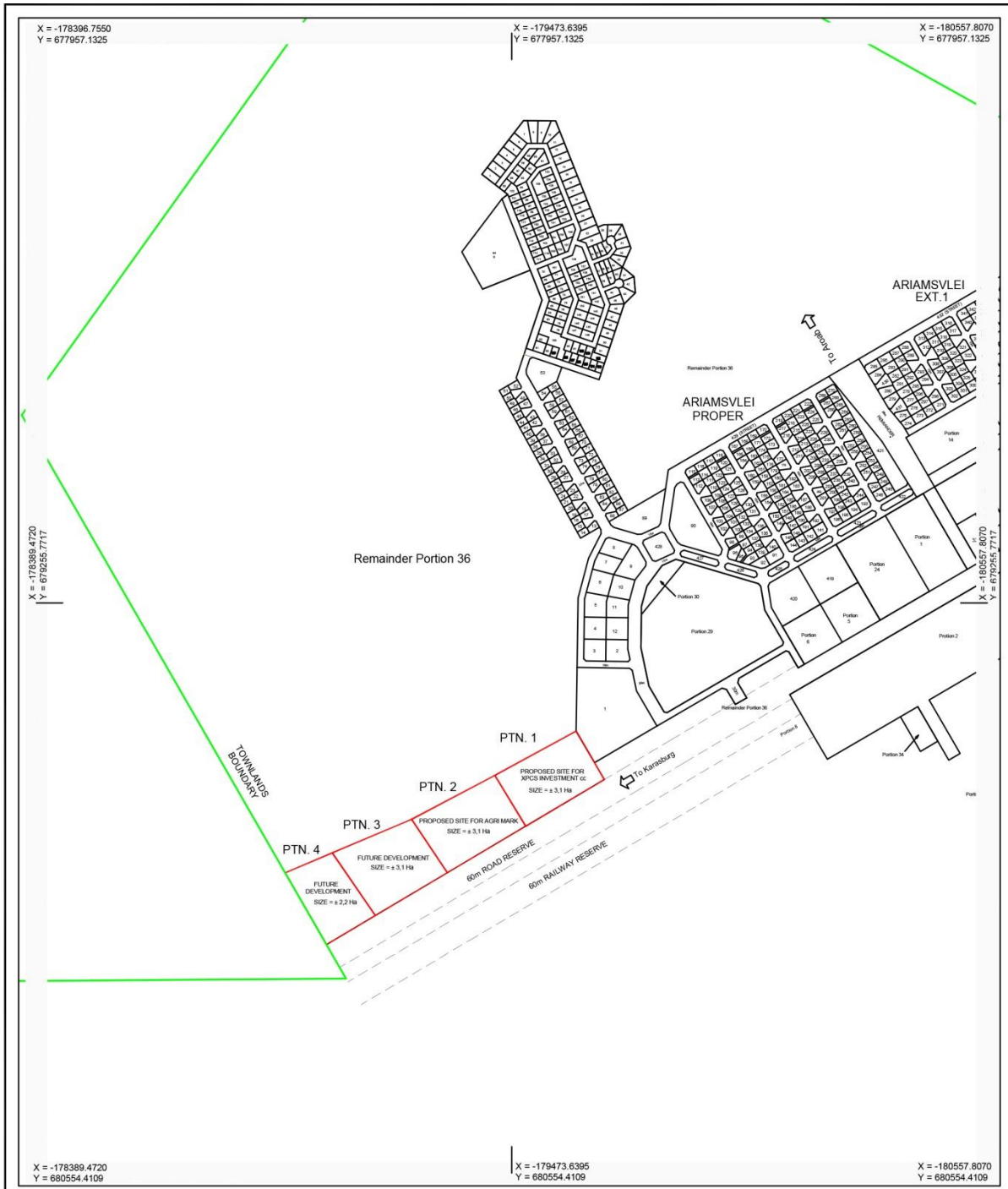


Figure 2: Locality Plan of Project Site





<p>Scale: 1/12 000</p> <p>DATE: SEPT. 2019</p> <p>PLAN NO. ARIAMSVLEI</p> 	<p>LOCALITY PLAN OF PORTIONS 1, 2, 3 &amp; 4 ARIAMSVLEI KARAS DISTRICT</p>	
---	--	---

Figure 3: Locality Plan of Project Site on Photo

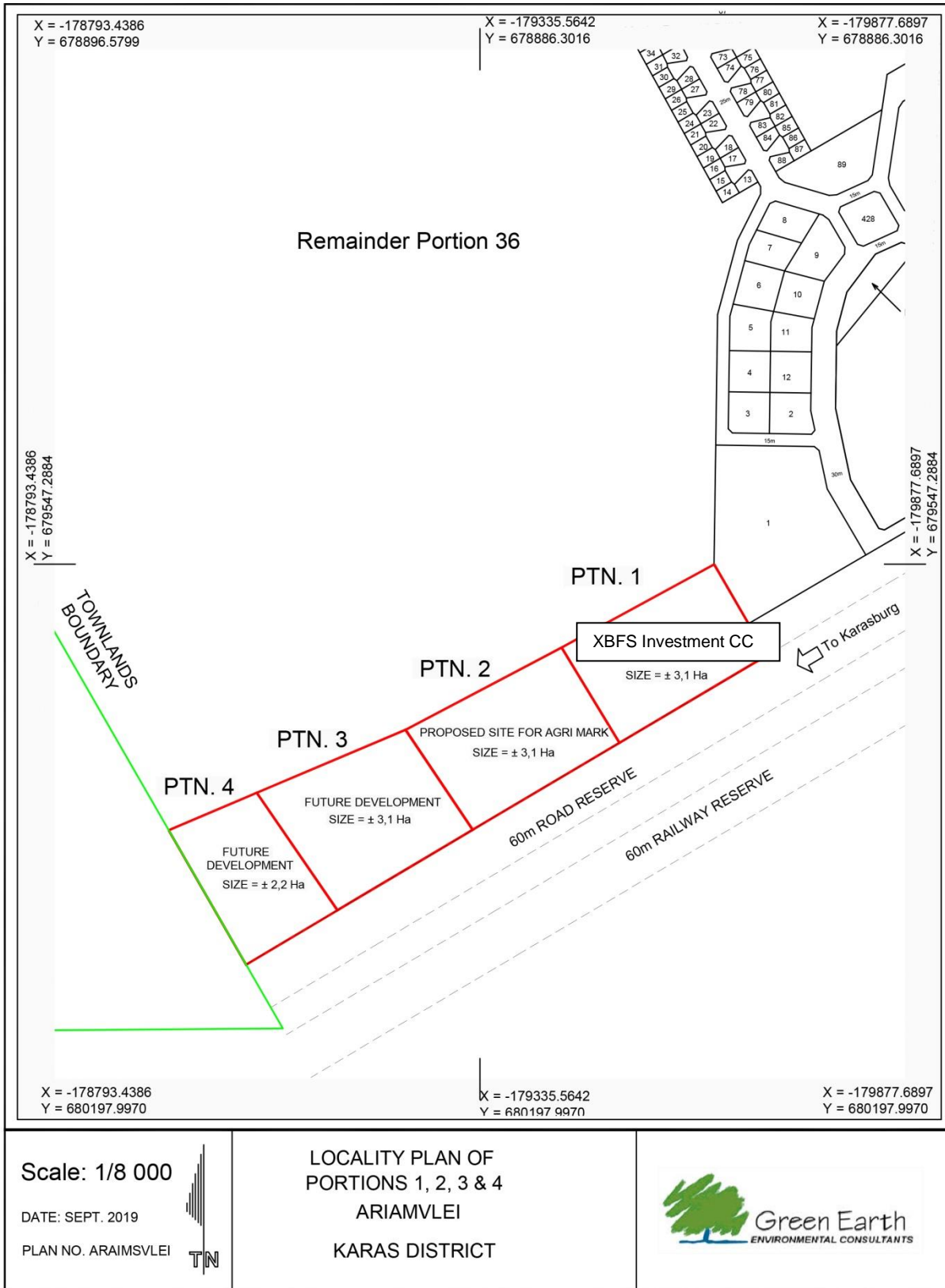
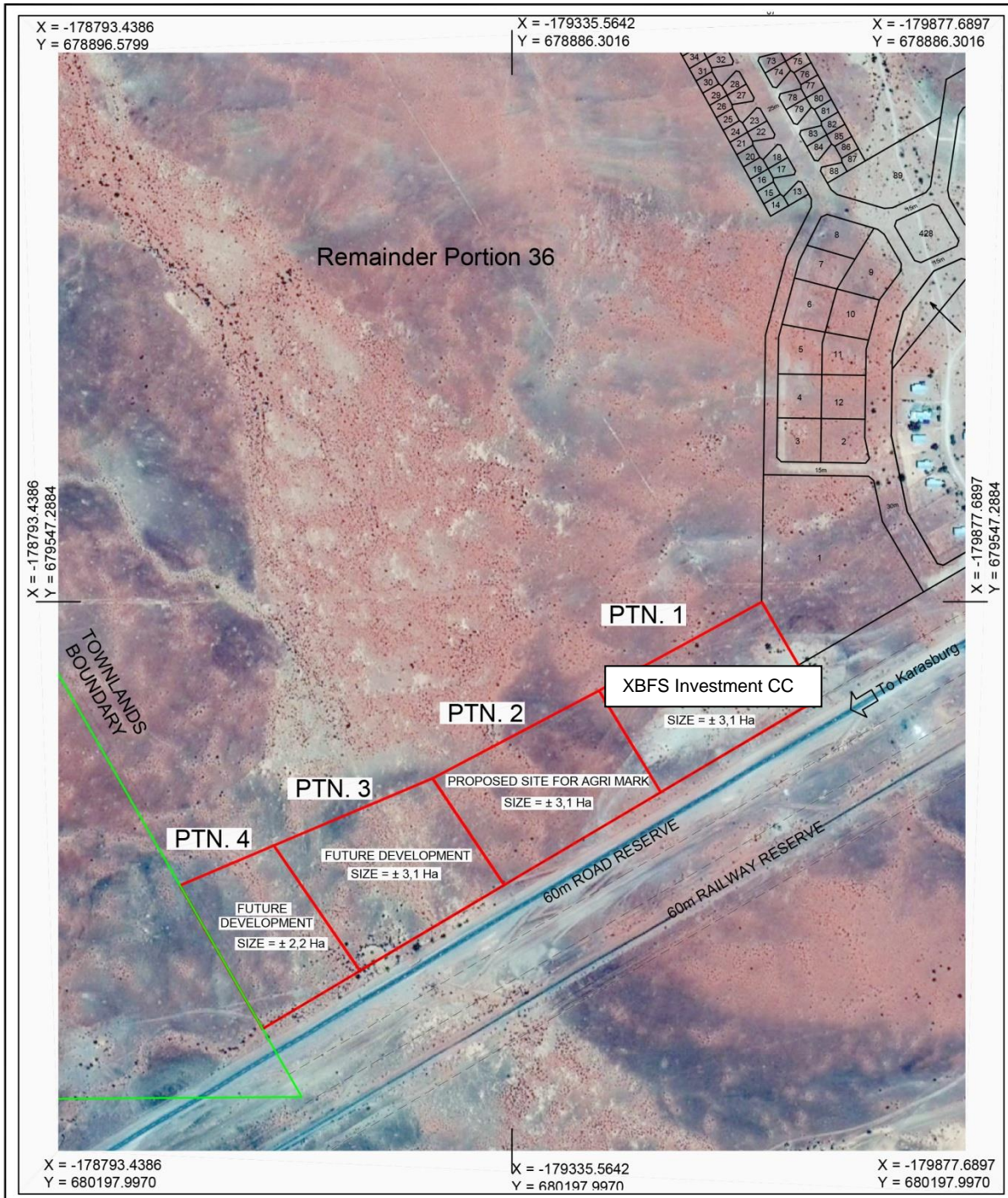


Figure 4: Project Site Map





<p>Scale: 1/8 000</p> <p>DATE: SEPT. 2019</p> <p>PLAN NO. ARAIMSVLEI</p> 	<p>LOCALITY PLAN OF PORTIONS 1, 2, 3 &amp; 4 ARIAMVLEI KARAS DISTRICT</p>	
--	---	---

Figure 5: Project Site Map on Photo



### 3. Project Proposal

A fuel outlet will be constructed on the project site. The project site is 3.1 hectares in extent. To be able to store and sell fuel from the site, XBFS must install the facilities required for the handling and storage of the fuel. The construction of the site will only commence once an environmental clearance is obtained and the necessary permits have been issued by the Ministry of Mines and Energy (MME). The site will be constructed in accordance with the requirements of the MME.

The proposed Service Station will dispense petrol as well as diesel for vehicles and trucks traveling through or visiting the Village. The Service Station will eventually also incorporate a “convenience shop” which will provide off the shelf consumables and take-away foods. A kiosk and male and female ablution facilities will be provided. Fuels will be stored in composite, underground storage tanks, with related infrastructure. Each of these tanks will be linked via underground pipes to the relevant fuel dispenser points on the Service Station forecourts. The tanks will be supplied with fuel by road tankers, operated by duly licensed and specialized transport companies, which will discharge via filler points. Filling of the tanks will be carried out on an “as and when required” basis, but it is envisaged that tanks will require filling on average once a week.

The proposed fuel retail/wholesale facility will consist of the following:

- Facilities for the storage, handling and selling of Unleaded Petrol (ULP) and Diesel 50ppm;
- The total tank capacity proposed for the site is ±96000 L;
- Underground tanks with the following capacities will be installed:
  - 1 X 43 000 Diesel
  - 1 X 43 000 L ULP
- There will be 2 – 6 dispensing points;
- The facility will initially only operate during normal business hours and pending on demand on a 24-hour basis;
- Double wall Tanks with 2 or 3 compartments 47 m<sup>3</sup> (max capacity) (30+10+7) EN12285 standards;
- Spill containment infrastructure, with an oil/water separator will be installed to protect against spillages in accordance with the Ministry of Mines and Energy’s Requirements;
- The proposed facility will include bund walls and floors with traps to contain spillages which might happen during the handling of diesel;
- The tanks will be linked via underground pipes to the relevant fuel dispenser points (curbside pump);
- The curbside pump will be installed over a spill slab with a trap to prevent any spilled diesel from leaching into the soil. The trap sump will be linked to a 3-chamber separator which will collect any spilled diesel for proper disposal;
- The driveway areas will be paved. The tanks will be supplied with fuel by road tankers (operated by properly licensed operators and drivers) which will discharge via filler

points. Filling of the tanks will be carried out on an “as and when required” basis, but it is envisaged that tanks will require filling on average two times per month;

- A concrete slab will be constructed around the island, under the canopy (around pumps), over the tank and around the filler point;
- The refuelling area is covered by an overhead canopy;
- The entire driveway area, the area surrounding the dispensing points and area below the canopy will be raised by land infill and sloped and landscaped and provided with proper drainage in order not to be subject to storm water damage/flooding.

Below is a summary of the typical operational activities on this site:

- Entrance and exit of heavy and light vehicles to and from the service station;
- Circulation and parking of vehicles on the site, at the filling points, shop, yard and offices;
- Movement of people on the site, including pedestrians visiting the shop, yard and offices;
- Filling of vehicles with fuel (both light and heavy-duty vehicles);
- Filling of fuel into the aboveground tanks by direct closed transfer;
- Delivery of supplies for the shop, yard and offices;
- Administrative activities related to the businesses.

#### **4. Bulk Services and Infrastructure Provision**

The Project Site has not been developed. No infrastructure is present on site. The land is generally flat consisting of a few scattered shrubs and the surface area is covered with loose stones. The soil type present on the site is characterized by Leptosols that contain gravel.

##### **4.1. Access Road**

Portion 1 of the Remainder of Portion 36 of Farm Ukumas in the Village of Ariamsvlei, Karas District is located next to the B3 Road leading from Karasburg to Upington. The project site will obtain access from the south eastern side of the site. Access will be obtained from the B3 Road. The approval to take access from the Trunk Road will be obtained from the Roads Authority and the Karas Regional Council.

##### **4.2. Water supply**

The project site will obtain water from the water reticulation system in the village. The area has an average rainfall of 0-99 mm. Water should therefore be used sparingly in the construction and operational phase.

##### **4.3. Electricity reticulation**

The project will obtain electricity from the local network servicing the Village of Ariamsvlei. The Proponent will also install a silent backup generator to provide electricity in case of power failures on the local network.

#### **4.4. Sewage disposal**

Only household sewer will be generated on site from the toilet facilities for the staff and clients. This sewer will be connected to the sewer system of the Ariamvlei Village.

#### **4.5. Solid waste disposal/refuse removal**

The solid waste generated on the site will be collected by the proponent and be disposed of at an approved landfill site of the Village Council. Hazardous Waste which might be generated on the site will be dealt with in accordance with the MME's municipal waste procedures for hazardous waste.

### **5. National Legislation**

In accordance to the Environmental Impact Assessment Regulations (GN 30 in GG 4878 of 6 February 2012) of the Environmental Management Act (No. 7 of 2007) the activities listed below, which forms part of the planning, construction and operation of the project, may not be undertaken without an Environmental Clearance:

#### ***ENERGY GENERATION, TRANSMISSION AND STORAGE ACTIVITIES***

- *The construction of facilities for the refining of gas, oil and petroleum products;*

#### ***HAZARDOUS SUBSTANCE TREATMENT, HANDLING AND STORAGE***

- *The storage and handling of dangerous goods, including petrol, diesel, liquid petroleum gas or paraffin, in containers with a combined capacity of more than 30 cubic meters at any one location.*
- *Construction of filling stations or any other facility for the underground and aboveground storage of dangerous goods, including petrol, diesel, liquid, petroleum, gas or paraffin.*

Other Acts, Policies and guidelines will also be consulted to ensure that the project is constructed and operated in accordance with Namibian and International Legislation and guidelines.

### **6. Purpose of the Environmental Assessment Project**

The purpose of the Environmental Impact Assessment is to consider social, ecological, legal and institutional issues related to the intended use of the land, guided by the principles and stipulations of the Namibian Environmental Assessment Policy (1995) and Namibia's Environmental Management Act (2007), to determine the desirability of the proposed activities on the suggested area and to develop an Environmental Management Plan (EMP) to mitigate and manage environmental issues identified in the process.

In order to accomplish the above, the impact study will be undertaken and based on the outcome of the findings; further specialists' investigation might be required to fully assess all impacts.

## **7. Aims of the Impact Process**

- To comply with Namibia's Environmental Management Act (2007) and its regulations (2012);
- To ascertain existing environmental conditions on the site in order to determine its environmental sensitivity;
- To inform I&APs and relevant authorities of the details of the proposed activities and to provide them with an opportunity to raise issues and concerns;
- To assess the significance of issues and concerns raised;
- To compile an impact report detailing all identified issues and possible impacts, stipulating the way forward and identify specialist investigations required;
- To outline management guidelines in an Environmental Management Plan (EMP) to minimize and/or mitigate potentially negative impacts.

## **8. Methodology**

### a) Desktop sensitivity assessment

Literature available on the area will be reviewed in order to determine potential environmental issues and concerns.

### b) Site assessment (site visit)

This involves investigating the environmental parameters on site in order to enable further understanding of the potential impacts on site.

### c) Impact process

Local stakeholders will be given the opportunity to comment on the proposed activities and engage in the planning process. The findings of the assessment process will be incorporated in the environmental impact assessment report.

## **9. Environmental and Planning Issues Identified**

From previous experience with developments of this nature and comments received from Affected Parties, the proposed project will have the following possible impacts on the receiving environment:

### **Biophysical impacts:**

- On ground and surface water (water quality, water tables and sustainable water supply on consumers who rely on this water source)
- Surface drainage systems (flow of surface draining systems)
- Possibility of air pollution (dust during construction)
- Effect on vegetation (grass, trees and shrubs directly in on areas to be cleared for construction of services and buildings)
- Effect on wild and bird life
- Effect on natural and general ambiance of the area and surroundings
- Concerns if the area can be restored/rehabilitated to an acceptable status once the bulk services have been constructed.

### **Socio-economic impacts:**

- Additional employment will be created
- Additional products/services will be provided
- Stock theft and illegal hunting might increase during construction
- Noise and dust pollution from construction operations
- Community health issues - transmission of diseases from construction team and support staff to local community
- Increase in criminal activities
- Cultural/heritage impacts

These impacts and others which will be identified during the environmental scoping procedures and the engagement of the interested and affected parties will be evaluated in order to determine the significance of impact and if and how these impacts can be mitigated.

### **10. Public Involvement Program**

As an important part of the Environmental Impact Assessment process you as stakeholder or interested member of the public are invited to find out more about what is being proposed, the implications thereof on the environment and/or to raise any issues or concerns.

Should you have any questions regarding the project, please contact **GREEN EARTH Environmental Consultants** at the contact details provided on *Page 1* of this document. The closing date for any questions, comments, inputs or information is 15 November 2019.

# 'This is not over'

...furious Catalan separatists warn as Spain jails leaders

**B**ARCELONA - "I feel fury and a sense of powerlessness," said Joan Guich, one of thousands of people who took to the streets of Barcelona after Spain's Supreme Court jailed nine Catalan leaders over a failed independence bid.

"They have been convicted for an ideology which I agree with," said this 19-year-old student, who gave voice to a sentiment felt by many.

For supporters of Catalan independence, Monday's verdict, which saw their leaders handed heavy prison terms, was like a red rag to a bull.

And the anger was palpable: in their thousands, they blocked access to Barcelona airport, they brought train lines grinding to a halt and blocked roads in the city and across the region, in some places even engaging in running battles with the police.

"We are going to make ourselves heard, they should know that this is not over," said Jordi, 44-year-old shopkeeper.

"Until now, we have been waiting to see what would happen with the sentence. And the Spanish state, as ever, does not disappoint."

Worst hit was the airport, where under a light drizzle, hundreds of protesters hurled stones, rubbish bins, plastic bottles and other objects at the police.



The police responded by repeatedly charging them and firing rounds of foam bullets into the crowd, and the regional emergency services said they treated 53 people for injuries.

"We have always chosen peaceful ways (of fighting for what we believe in) but nobody listens. Now we are forced to go down the route of civil disobedience," said Carles Navarro, a 49-year-old IT consultant.

"The indignation is just too much" and "affects too many people. What they don't realise is that we are very angry and we will not stop."

Although the sentence was widely expected to be harsh, it

still caused a lot of anguish among pro-independence supporters who within minutes had begun to fill the streets of Barcelona.

"Today is going to be historic, you can feel it in the atmosphere. Serious things are happening, we can't stay home," said Oscar Quiles, a 47-year-old real estate entrepreneur and one of some 25 000 people who by 1.00 pm had packed into Plaza Catalunya in the centre of Barcelona.

"People are really wound up," he warned.

The tension had been palpable since the early morning as the city awoke to a helicopter flying overhead and heavy police presence in potential flashpoint

areas around the court, the main train station and the airport.

But focus quickly turned to Barcelona's El Prat airport with supporters directed there by a group called Democratic Tsunami which

Tense... Protesters hold a banner reading 'Free political prisoners El Prat airport in Barcelona.'

Photo: Nampal/AFP

has more than 150 000 followers on Telegram.

"The time has come to make voice felt around the world, goal: stop the activity of Barcelona airport," the group said in a message to supporters.

Thousands of them went on foot or by metro, taxi, train or car to the airport where they paralyse transport links although a massive police presence stopped them from entering the terminal itself.

A huge tailback of hundreds of stationary cars could be seen on road leading to the airport, with some people getting out to fit the journey on foot. And airport passengers were also stranded, with no taxis and trains and metro working intermittently. -Nampal/

## China urges Turkey to 'stop military action' in Syria

**BEIJING** - China yesterday called on Turkey to stop its military action in northern Syria and "return to the correct way of political resolution", with Ankara's operation against Kurdish militants in its seventh day.

Turkey launched an assault last week against the Syrian Kurdish People's Protection Units (YPG), which it sees as a "terrorist" offshoot of Kurdish insurgents in its own territory.

The United States imposed sanctions on Turkey, its NATO ally, in a bid to stop an assault that its own troop withdrawal from the area had triggered but Ankara has shown no sign of relenting.

"The sovereignty, independence, unification, and territorial integrity of Syria should be respected and upheld," Chinese foreign ministry spokesman Geng Shuang said at a regular press briefing.

"We call on Turkey to stop military action, and return to the correct way of political resolution."

Turkish President Recep Tayyip Erdogan said Tuesday that the operation would not stop until "our objectives have been achieved".

He said 1 000 square kilometres of Syrian territory had so far been "liberated from the separatist terrorist organisation".

Turkey plans to establish a safe zone stretching across northern Syria, to which it can repatriate many of the 3.6 million Syrian conflict refugees that it is hosting.

Geng warned that the operation "may result in terrorists fleeing out, and the Islamic State may attempt to take the opportunity to stage a comeback."

"We urge the Turkish side to take responsibility and be sided with the international community and jointly fight terrorism." -Nampal/AFP



No end in sight... Smoke rises from the Syrian town of Ras al-Ain, from the Turkish side of the border at Ceylanpinar district in Sanliurfa.

Photo: Nampal/AFP

**Green Earth Environmental Consultants**

**CALL FOR PUBLIC PARTICIPATION/COMMENTS**

**ENVIRONMENTAL IMPACT ASSESSMENT FOR THE PROPOSED CONSTRUCTION OF A MEGAWATT PHOTOVOLTAIC PLANT AND OVERHEAD LINES ON A PORTION OF PORTION 7 OF FARM KLEIN OKAPUKA NO. 51, KHOMAS REGION**

Green Earth Environmental Consultants have been appointed to attend to and complete an Environmental Impact Assessment and Environmental Management Plan (EMP) in order to obtain an Environmental Clearance Certificate as per the requirements of the Environmental Management Act (No. 7 of 2007) and the Environmental Impact Assessment Regulations (GN 50 in GG 4878 of 6 February 2012) for the proposed construction of a 2 Megawatt Photovoltaic Plant and Overhead Power Lines on a Portion of Portion 7 of Farm Klein Okapuka No. 51, Khomas Region.

**Name of proponent:** Namdi Poultry Industries (Pty) Ltd (NP)

**Project location and description:** The Photovoltaic Plant (PV) will be located on a portion of Portion 7 of Farm Klein Okapuka No. 51, Khomas Region, located 500km to the north of Windhoek, to the west of the B1 National Road. The PV Plant is required to supplement the electricity requirements of NP's operations. The PV Plant will be linked to the various NP operations by 23km of 11kV overhead powerlines. An area of approximately 15ha will be cleared from vegetation to accommodate the PV Plant and transformer station. A locality plan of the site is available at the offices of Green Earth Environmental Consultants at Bridgeview Offices, No. 4 Dr. Kwame Ninsin Avenue, Klein Windhoek.

Interested and affected parties are hereby invited to register in terms of the assessment process to give input, comments and opinions regarding the proposed project. A Background Information Document is available to all I&APs who registered. A public meeting will be held on Thursday the 7th of November 2019 at 15:00 at the Board Room of the NP Processing Plant.

The last date for comments and/or registration is 12 November 2019.

Contact details for registration and further information:  
Green Earth Environmental Consultants  
Contact Persons: Charlie Du Toit  
Carlien van der Walt, Tel: 0811273145  
E-mail: charlie@greenearthambisa.com and carlien@greenearthambisa.com

**Green Earth Environmental Consultants**

**CALL FOR PUBLIC PARTICIPATION/COMMENTS**

**ENVIRONMENTAL IMPACT ASSESSMENT FOR THE PROPOSED CONSTRUCTION OF FACILITIES AND STORAGE AND HANDLING OF OIL AND PETROLEUM PRODUCTS IN ARIANSVLEI, KARAS DISTRICT**

Green Earth Environmental Consultants have been appointed to attend to and complete an Environmental Impact Assessment and Environmental Management Plan (EMP) in order to obtain an Environmental Clearance Certificate as per the requirements of the Environmental Management Act (No. 7 of 2007) and the Environmental Impact Assessment Regulations (GN 50 in GG 4878 of 6 February 2012) for the proposed construction of facilities and storage and handling of oil and petroleum products in Ariansvlei, Karas District.

**Name of proponent:** XBFS (Extreme Bulk Fuel Services)

**Project location and description:** It is the intention of XBFS to construct and operate a fuel station on Portion 1 of the Remainder of Portion 36 of the Farm Ukuma, located in the Village of Ariansvlei, Karas District. The project site is located next to the B3 Road leading from Karasburg to Uptington. The project site is 21.1 hectares in extent. A locality plan of the site is available at the offices of Green Earth Environmental Consultants at Bridgeview Offices, No. 4 Dr. Kwame Ninsin Avenue, Klein Windhoek.

Interested and affected parties are hereby invited to register in terms of the assessment process to give input, comments and opinions regarding the proposed project. A public meeting will be held only if there is enough public interest. Only I&APs that registered will be notified of the possible public meeting to be held.

The last date for comments and/or registration is 12 November 2019.

Contact details for registration and further information:  
Green Earth Environmental Consultants  
Contact Persons:  
Charlie Du Toit/Carlien van der Walt  
Tel: 0811273145

