

Environmental Impact Assessment (EIA) for the Proposed ELSH Crematorium, Windhoek

Site maps

The proposed ELSH Crematorium will be situated on Plot 11, Nubu Industrial Park, in Nubuamis, the area loosely known as ‘Brakwater’ immediately north of the Windhoek built-up area (Figure Error! No text of specified style in document.-1, Figure Error! No text of specified style in document.-2). Nubu Industrial Park is situated on Portion 108, a Portion of the Remaining Extent of Portion 15, of the Farm Nubuamis No. 37.

Coordinates

22.470478S, 17.076596E

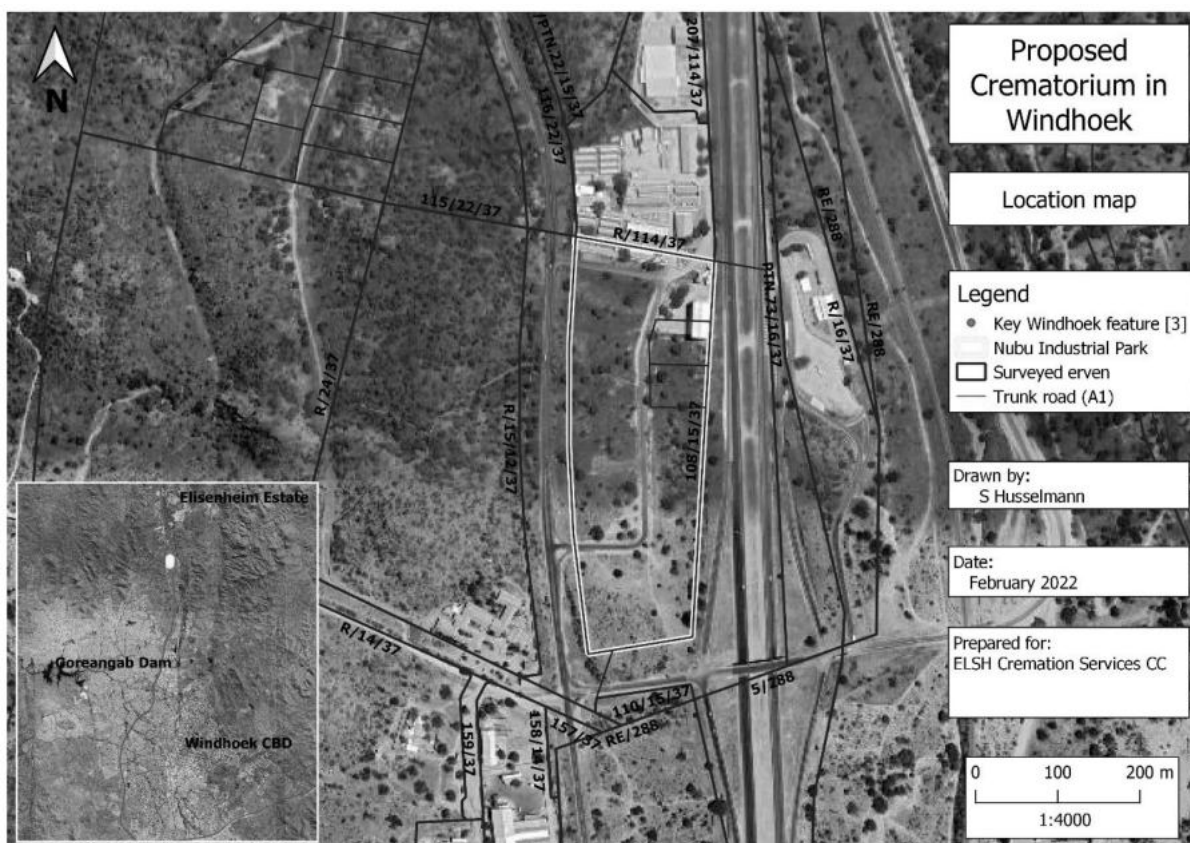


Figure Error! No text of specified style in document.-1: Location of Nubu Industrial Park, Nubuamis, Windhoek.

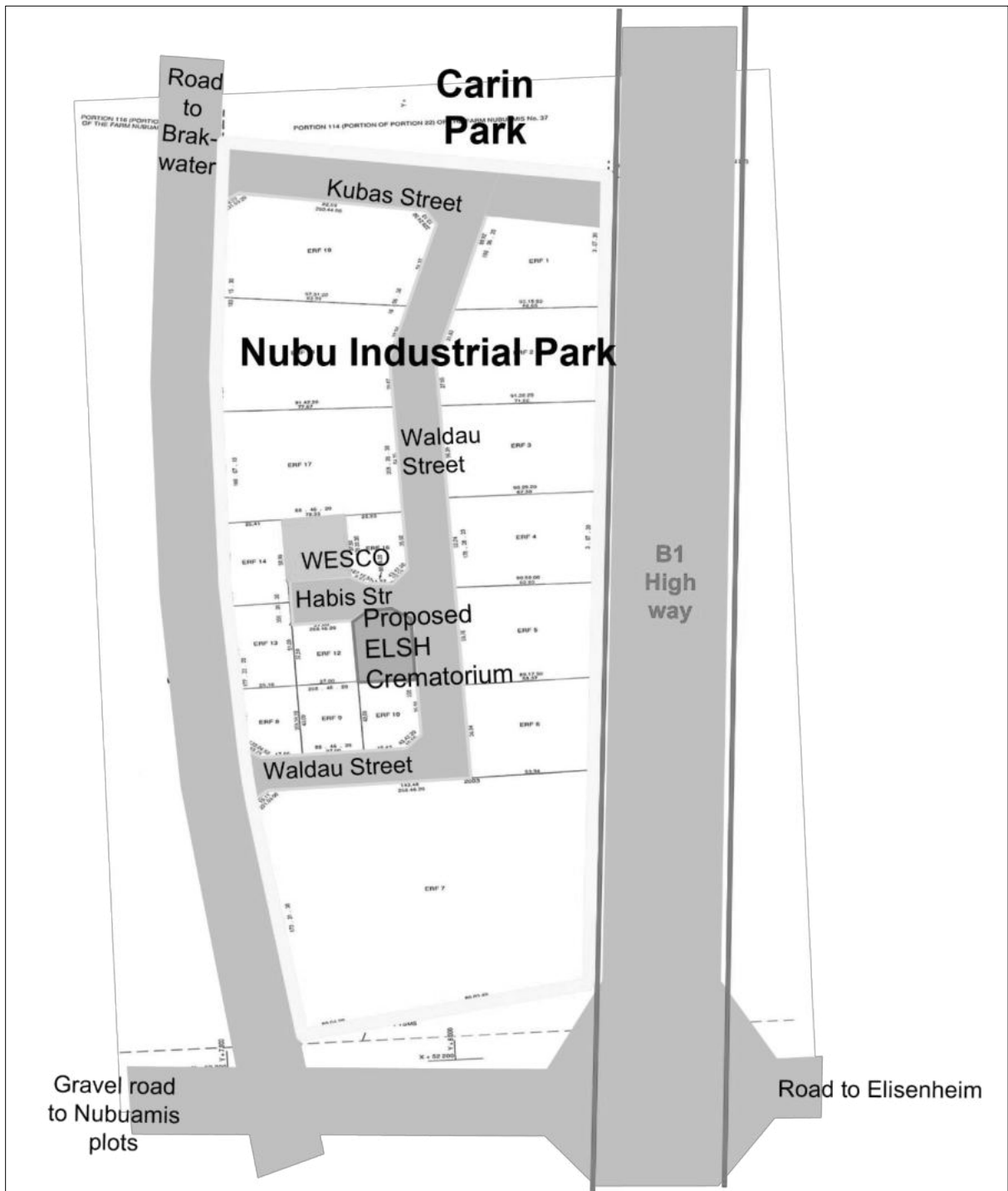


Figure Error! No text of specified style in document.-2: Location of proposed ELSH Crematorium in relation to Nubu Industrial Park and surroundings, Nubuamis, Windhoek.