

Figure 4: Locality map of the proposed exploration activity's site or area in the Erongo Regions

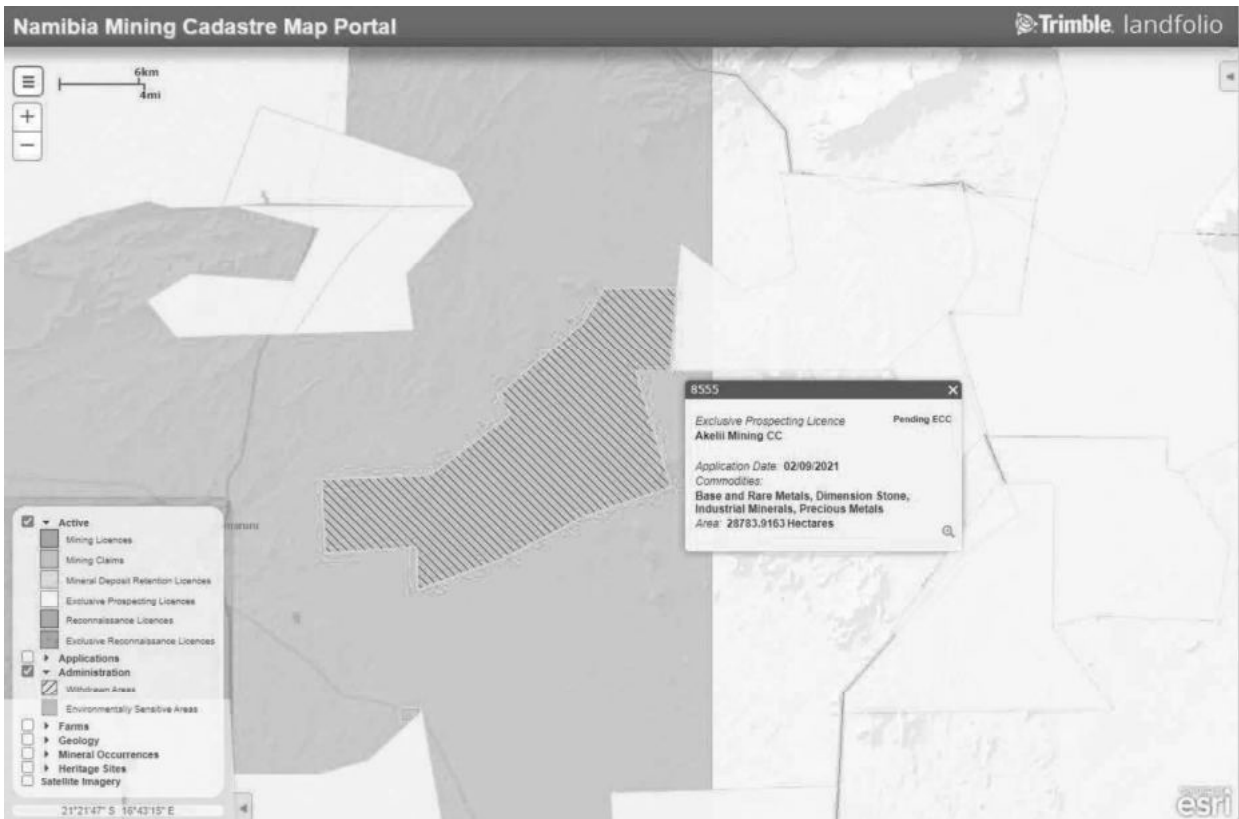


Figure 3: Evidence of the proposed EPL application on the Ministry of Mine's cadastre (MME, 2022)

Table 3: Corner coordinates of the proposed development site

Corner point	Latitude	Longitude
A – EPL 8555 Point 1	21°14'52.00"S	16°18'13.00"E
B – EPL 8555 Point 2	21°18'17.00"S	16°18'1.00"E
C – EPL 8555 Point 3	21°18'19.00"S	16°16'22.00"E
D – EPL 8555 Point 4	21°23'12.00"S	16°17'58.00"E
E – EPL 8555 Point 5	21°24'21.00"S	16°14'8.00"E
F – EPL 8555 Point 6	21°26'4.00"S	16°10'33.00"E
G – EPL 8555 Point 7	21°26'59.00"S	16° 6'48.00"E
H – EPL 8555 Point 8	21°25'39.00"S	16° 6'34.00"E
I – EPL 8555 Point 9	21°25'50.00"S	16° 2'29.00"E
J – EPL 8555 Point 10	21°22'48.00"S	16° 2'21.00"E
K – EPL 8555 Point 11	21°22'37.00"S	16° 7'11.00"E
L – EPL 8555 Point 12	21°20'7.00"S	16°10'46.00"E
M – EPL 8555 Point 13	21°19'19.00"S	16°10'14.00"E
N – EPL 8555 Point 14	21°16'10.00"S	16°14'3.00"E
O – EPL 8555 Point 15	21°14'52.00"S	16°15'0.00"E

2.4. SUPPORTING INFRASTRUCTURE

2.4.1 Basecamp

Given the location of the EPL and that it is situated in an area predominantly surrounded with commercial farmlands (**Figure 4**) and where tourism activity only occur to a limited degree, base-camp is necessary. Therefore, any suitable site for lodging purpose or for base-camp must be identified in collaboration and or with consent of the property owner and all other relevant authorities including the local and competent authorities.

Where practical and possible, it is strictly recommended that for unskilled labour, local community members are employed and thus accommodated at their existing homestead to mitigate and reduce potential conflict with the conservancy wildlife and livestock management protocols.

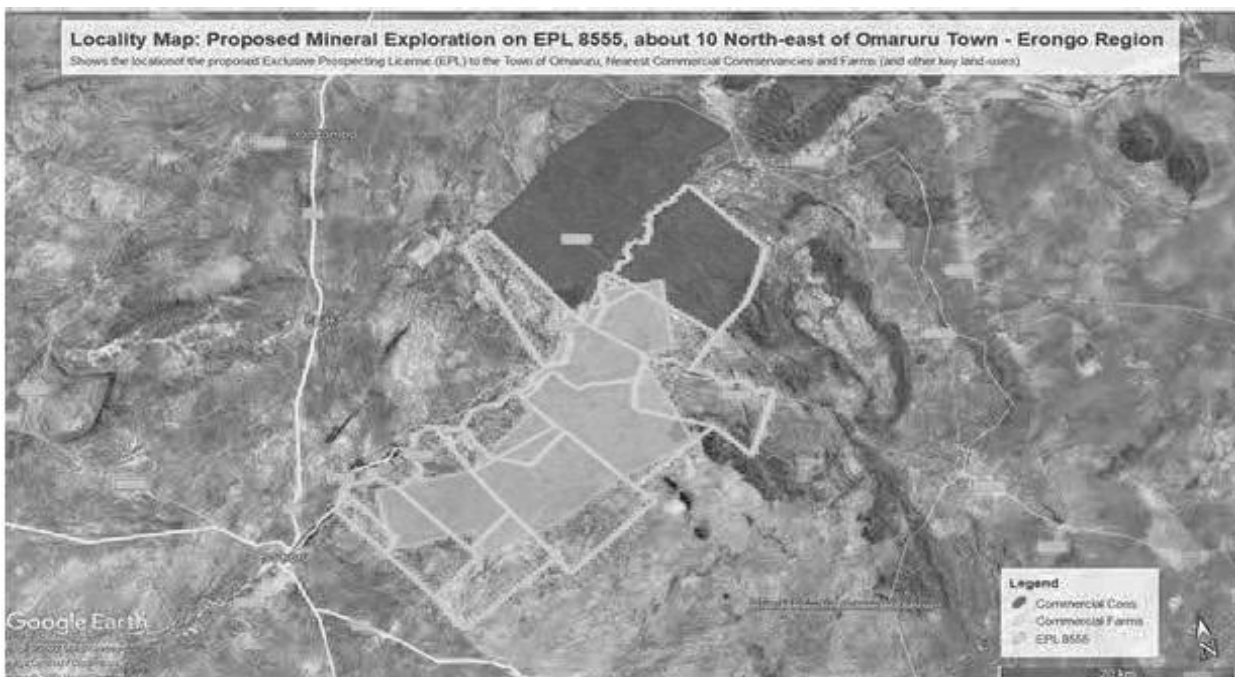


Figure 4: Land-use map of the proposed exploration activity's site or area in the Erongo Regions