

Appendix A: Public Consultation Documents

- 1. Newspaper adverts**
- 2. Consultation Register**
- 3. Questionnaire**
- 4. Communiques**



**NOTIFICATION AND CALL FOR PUBLIC PARTICIPATION
ENVIRONMENTAL IMPACT ASSESSMENT (EIA) PROCESS FOR THE PROPOSED DEVELOPMENT OF 22
TELECOMMUNICATION BASE-TRANSCIVER STATION (BTS) TOWERS ON SELECTED SITES COUNTRYWIDE, NAMIBIA**

D & P Engineers and Environmental Consultants hereby gives notice to all potentially Interested and Affected Parties (I&AP) that an application will be made to the Environmental Commissioner in terms of the Environmental Management Act (No 7 of 2007) and the Environmental Impact Assessment Regulations (SN 30 of 6 February 2012) for the proposed development of twenty two (22) base transceiver station (BTS) towers.

Powercom (PTY) LTD herein referred to as the proponent has identified different areas that needs improved communication alternatives, in Namibia due to growth in population and economic activities. To achieve the objective of improved telecommunication connectivity, Powercom has been appointed by Telecom Namibia its sister company to establish telecommunication towers across the identified different locations. In this respect, Powercom has identified sites to construct and operate 22 telecommunication base transceiver station towers across the country.

Powercom the proponent has appointed D&P Engineers and Environmental Consultants to conduct the EIA process for these proposed BTS tower developments. The EIA is being conducted to satisfy the Namibian environmental legislative requirements. The general public as well as any interested and Affected Parties (I&AP) are hereby invited to register their concerns and notify the consultant of any potential environmental and social impacts that may be triggered by the project.

The proposed projects for which the Environmental Clearance Certificates will be applied for are as follows:

<p>1. Project Title: Environmental Impact Assessment (EIA) Study for the Proposed Construction and Operation of a Telecommunication Base Transceiver Station (BTS) Tower at Seheim Settlement in Karas Region.</p> <p>Location: Seheim Settlement, Karas Region - Namibia</p> <p>Coordinates: 26°49'02.8"S, 17°48'11.5"E</p>	<p>2. Project Title: Environmental Impact Assessment (EIA) Study for the Proposed Construction and Operation of a Telecommunication Base Transceiver Station (BTS) Tower at Lhongo Village in Oshana Region.</p> <p>Location: Lhongo Village, Oshana Region - Namibia</p> <p>Coordinates: 18°02'31.8"S 16°10'24.7"E</p>	<p>Project Title: Environmental Impact Assessment (EIA) Study for the Proposed Construction and Operation of a Telecommunication Base Transceiver Station (BTS) Tower at Otshandja Village in Oshana Region - Namibia</p> <p>Location: Otshandja Village in Oshana Region - Namibia</p> <p>Coordinates: 17°49'28.0"S 15°58'17.1"E</p>	<p>Project Title: Environmental Impact Assessment (EIA) Study for the Proposed Construction and Operation of a Telecommunication Base Transceiver Station (BTS) Tower at Oshokole Village in, Omusati Region.</p> <p>Location: Oshokole Village in, Omusati Region - Namibia</p> <p>Coordinates: 17°32'15.3"S 15°07'42.2"E</p>
<p>Project Title: Environmental Impact Assessment (EIA) Study for the Proposed Construction and Operation of a Telecommunication Base Transceiver Station (BTS) Tower at Omahenehe Border Post, Omusati Region.</p> <p>Location: Omahenehe Border Post, Omusati Region - Namibia</p> <p>Coordinates: 17°25'05.0"S 14°34'07.8"E</p>	<p>Project Title: Environmental Impact Assessment (EIA) Study for the Proposed Construction and Operation of a Telecommunication Base Transceiver Station (BTS) Tower at Epinga village, Oshana Region.</p> <p>Location: Epinga village, Oshana Region - Namibia</p> <p>Coordinates: 17°24'39.5"S 16°26'14.7"E</p>	<p>Project Title: Environmental Impact Assessment (EIA) Study for the Proposed Construction and Operation of a Telecommunication Base Transceiver Station (BTS) Tower at Mupini Village in, Kavango West Region - Namibia</p> <p>Location: Mupini Village in, Kavango West Region - Namibia</p> <p>Coordinates: 17°52'43.8"S 15°37'52.4"E</p>	<p>Project Title: Environmental Impact Assessment (EIA) Study for the Proposed Construction and Operation of a Telecommunication Base Transceiver Station (BTS) Tower at Kango Village in, Kavango East Region.</p> <p>Location: Kango Village in, Kavango East Region - Namibia</p> <p>Coordinates: 17°57'01.7"S 21°09'52.5"E</p>
<p>Project Title: Environmental Impact Assessment (EIA) Study for the Proposed Construction and Operation of a Telecommunication Base Transceiver Station (BTS) Tower at Gains, Oshana Region.</p> <p>Location: Gains, Oshana Region - Namibia</p> <p>Coordinates: 18°24'32.4"S 17°20'35.3"E</p>	<p>Project Title: Environmental Impact Assessment (EIA) Study for the Proposed Construction and Operation of a Telecommunication Base Transceiver Station (BTS) Tower at Ilumwe Village in, Zambezi Region.</p> <p>Location: Ilumwe Village, Zambezi Region - Namibia</p> <p>Coordinates: 17°47'38.3"S 24°36'56.9"E</p>	<p>Project Title: Environmental Impact Assessment (EIA) Study for the Proposed Construction and Operation of a Telecommunication Base Transceiver Station (BTS) Tower at Doba Brakwater in, Erongo Region.</p> <p>Location: Doba Brakwater in, Erongo Region - Namibia</p> <p>Coordinates: 22°25'07.1"S 17°05'37.6"E</p>	<p>Project Title: Environmental Impact Assessment (EIA) Study for the Proposed Construction and Operation of a Telecommunication Base Transceiver Station (BTS) Tower at Howobes S1 in, Erongo Region.</p> <p>Location: Howobes Settlement, Karas Region - Namibia</p> <p>Coordinates: 26°49'02.8"S, 17°48'11.5"E</p>
<p>Project Title: Environmental Impact Assessment (EIA) Study for the Proposed Construction and Operation of a Telecommunication Base Transceiver Station (BTS) Tower at Uuyeka village, Oshana Region.</p> <p>Location: Uuyeka village, Oshana Region - Namibia</p> <p>Coordinates: 17°57'24.7"S 18°18'39.1"E</p>	<p>Project Title: Environmental Impact Assessment (EIA) Study for the Proposed Construction and Operation of a Telecommunication Base Transceiver Station (BTS) Tower at Uuvuvya Village in, Oshana Region.</p> <p>Location: Uuvuvya Village in, Oshana Region - Namibia</p> <p>Coordinates: 18°08'05.7"S 15°27'55.3"E</p>	<p>Project Title: Environmental Impact Assessment (EIA) Study for the Proposed Construction and Operation of a Telecommunication Base Transceiver Station (BTS) Tower at Nakayale Anamulenge Village in, Omusati Region.</p> <p>Location: Nakayale Anamulenge Village in, Omusati Region - Namibia</p> <p>Coordinates: 17°29'41.0"S 15°00'51.0"E</p>	<p>Project Title: Environmental Impact Assessment (EIA) Study for the Proposed Construction and Operation of a Telecommunication Base Transceiver Station (BTS) Tower at Okuandu Village in, Omusati Region.</p> <p>Location: Okuandu Village in, Omusati Region - Namibia</p> <p>Coordinates: 17°54'05.6"S 15°36'55.6"E</p>
<p>Project Title: Environmental Impact Assessment (EIA) Study for the Proposed Construction and Operation of a Telecommunication Base Transceiver Station (BTS) Tower at Tandoro Settlement in Kavango West Region.</p> <p>Location: Tandoro Settlement in, Kavango West Region - Namibia</p> <p>Coordinates: 17°46'17.6"S 18°47'28.5"E</p>	<p>Project Title: Environmental Impact Assessment (EIA) Study for the Proposed Construction and Operation of a Telecommunication Base Transceiver Station (BTS) Tower at Ndonga Usena Settlement in Kavango East Region.</p> <p>Location: Ndonga Usena Settlement in Kavango East Region - Namibia</p> <p>Coordinates: 17°57'06.8"S 20°28'12.6"E</p>	<p>Project Title: Environmental Impact Assessment (EIA) Study for the Proposed Construction and Operation of a Telecommunication Base Transceiver Station (BTS) Tower at Diyogha Settlement in, Kavango East Region.</p> <p>Location: Diyogha Settlement in, Kavango East Region - Namibia</p> <p>Coordinates: 18°05'14.6"S 15°28'15.4"E</p>	<p>Project Title: Environmental Impact Assessment (EIA) Study for the Proposed Construction and Operation of a Telecommunication Base Transceiver Station (BTS) Tower at Nalaboleloha Village in, Zambezi Region.</p> <p>Location: Nalaboleloha Village in, Zambezi Region - Namibia</p> <p>Coordinates: 17°48'23.7"S 24°30'11.0"E</p>
<p>Project Title: Environmental Impact Assessment (EIA) Study for the Proposed Construction and Operation of a Telecommunication Base Transceiver Station (BTS) Tower at Muliikila Village in Zambezi Region.</p> <p>Location: Muliikila Village in Zambezi Region - Namibia</p> <p>Coordinates: 17°55'40.4"S 24°37'42.0"E</p>	<p>Project Title: Environmental Impact Assessment (EIA) Study for the Proposed Construction and Operation of a Telecommunication Base Transceiver Station (BTS) Tower at Weidi Bay Extension 17 in, Erongo Region.</p> <p>Location: Weidi Bay Extension 17 in, Erongo Region - Namibia</p> <p>Coordinates: To be Confirmed</p>		

Contact Details D&P Engineers and Environmental Consultants
Attention: Mr. I Kasigameli
PO Box 8401, Windhoek, Namibia
Email: info@dapeng.com.na
Tel: +264 61 302672

Interested & Affected Parties (I&AP) Registration and submission of comments: To comment or receive further information on the project, please register with the consultant (contact details below) as an I&AP before end of business on 25 September 2022. A Background Information Document (BID) has been compiled for the project and is available upon request to the consultant, contact below.

All registered I&APs will be informed throughout the assessment process and will be provided with further opportunities for review and submission of comments. Comments can also be lodged via the online form given:

<https://forms.gle/PNCoobQPa8u8866>

Adopt, Don't Shop!

HELLO!

They call me **RAFIKI**
10 WEEKS OLD FEMALE DOG

Playful, energetic, and curious!



Rafiki, is a 10 months old female dog. My name means friend, in Kiswahili and best believe I live up to my name, once I've grown fond of my human and have built a bond, I enjoy average physical exercise, and I have a short easy-care coat. I know how to sit, and I walk really well on a leash. I am partially house trained. I would appreciate a home that allows me to sleep indoors for that is what I am accustomed too.

HELLO!



They call me **HUNTER**
2 YEAR OLD MALE CAT

Playful, energetic, and affectionate!



Hunter is a 2-year-old male cat looking for his purrfect home. He is an easy-going cat, that enjoys the attention and affection he gets from humans. Hunter will thrive in a home with other cats.

SPCA Windhoek
145 Robert Mugabe Avenue, Windhoek
Tel: 061-238 654
Emergency Call: 081-324 4520 (After Hours Only)
Email: info@spcawindhoek.org.na

NOTIFICATION AND CALL FOR PUBLIC PARTICIPATION ENVIRONMENTAL IMPACT ASSESSMENT (EIA) PROCESS FOR THE PROPOSED DEVELOPMENT OF 22 TELECOMMUNICATION BASE-TRANSCIVER STATION (BTS) TOWERS ON SELECTED SITES COUNTRYWIDE, NAMIBIA

D & P Engineers and Environmental Consultants hereby give notice to all potentially interested and Affected Parties (I&AP) that an application will be made to the Environmental Commissioner in terms of the Environmental Management Act No 7 of 2007 and the Environmental Impact Assessment Regulations (EA 30 of 6 February 2012) for the proposed development of twenty two (22) base transceiver station (BTS) towers.

Powercom (PTY) LTD herein referred to as the proponent has identified different areas that needs improved communication alternatives in Namibia due to growth in population and economic activities. To achieve the objective of improved telecommunication services, Powercom has been appointed by Telecom Namibia its sister company to establish telecommunication towers across the identified different locations. In this respect, Powercom has identified sites to construct and operate 22 telecommunication base transceiver station towers across the country.

Powercom (the proponent) has appointed D&P Engineers and Environmental Consultants to conduct the EIA processes for these proposed BTS tower developments. The EIA is being conducted to satisfy the Namibian environmental legislative requirements. The general public as well as any interested and Affected Parties (I&APs) are hereby invited to register their concerns and notify the consultant of any potential environmental and social impacts that may be triggered by the project.

The proposed projects for which the Environmental Clearance Certificates will be applied for are as follows:

<p>1. Project Title: Environmental Impact Assessment (EIA) Study for the Proposed Construction and Operation of a Telecommunication Base Transceiver Station (BTS) Tower at Sechem Settlements, Karas Region.</p> <p>Location: Sechem Settlement, Karas Region - Namibia</p> <p>Coordinates: 26°49'02.3"S, 17°48'11.5"E</p>	<p>2. Project Title: Environmental Impact Assessment (EIA) Study for the Proposed Construction and Operation of a Telecommunication Base Transceiver Station (BTS) Tower at Lihongo Village in, Oshana Region.</p> <p>Location: Lihongo Village, Oshana Region - Namibia</p> <p>Coordinates: 18°02'1.8"S 10°10'14.7"E</p>	<p>Project Title: Environmental Impact Assessment (EIA) Study for the Proposed Construction and Operation of a Telecommunication Base Transceiver Station (BTS) Tower at Otshandjo Village in Oshana Region.</p> <p>Location: Otshandjo Village in Oshana Region - Namibia</p> <p>Coordinates: 17°49'28.0"S 15°38'17.1"E</p>	<p>Project Title: Environmental Impact Assessment (EIA) Study for the Proposed Construction and Operation of a Telecommunication Base Transceiver Station (BTS) Tower at Ontokob Village in, Omusati Region.</p> <p>Location: Ontokob Village in, Omusati Region - Namibia</p> <p>Coordinates: 17°32'15.3"S 15°07'42.2"E</p>
<p>Project Title: Environmental Impact Assessment (EIA) Study for the Proposed Construction and Operation of a Telecommunication Base Transceiver Station (BTS) Tower at Omahene Border Post, Omsati Region - Namibia</p> <p>Location: Omahene Border Post, Omsati Region - Namibia</p> <p>Coordinates: 17°25'05.0"S 14°34'07.8"E</p>	<p>Project Title: Environmental Impact Assessment (EIA) Study for the Proposed Construction and Operation of a Telecommunication Base Transceiver Station (BTS) Tower at Epanga village, Oshana Region.</p> <p>Location: Epanga Village, Oshana Region - Namibia</p> <p>Coordinates: 17°29'37.9"S 16°26'14.7"E</p>	<p>Project Title: Environmental Impact Assessment (EIA) Study for the Proposed Construction and Operation of a Telecommunication Base Transceiver Station (BTS) Tower at Mupini Village in, Erongo West Region - Namibia</p> <p>Location: Mupini Village in, Erongo West Region - Namibia</p> <p>Coordinates: 17°52'43.8"S 19°37'52.4"E</p>	<p>Project Title: Environmental Impact Assessment (EIA) Study for the Proposed Construction and Operation of a Telecommunication Base Transceiver Station (BTS) Tower at Kangongo Village in, Karungu East Region - Namibia</p> <p>Location: Kangongo Village in, Karungu East Region - Namibia</p> <p>Coordinates: 17°57'01.7"S 21°09'32.3"E</p>
<p>Project Title: Environmental Impact Assessment (EIA) Study for the Proposed Construction and Operation of a Telecommunication Base Transceiver Station (BTS) Tower at Gumbas, Oshana Region.</p> <p>Location: Gumbas, Oshana Region - Namibia</p> <p>Coordinates: 19°14'52.4"S 17°20'55.3"E</p>	<p>Project Title: Environmental Impact Assessment (EIA) Study for the Proposed Construction and Operation of a Telecommunication Base Transceiver Station (BTS) Tower at Isamat Village in, Zambezi Region.</p> <p>Location: Isamat Village, Zambezi Region - Namibia</p> <p>Coordinates: 17°47'28.3"S 24°36'56.9"E</p>	<p>Project Title: Environmental Impact Assessment (EIA) Study for the Proposed Construction and Operation of a Telecommunication Base Transceiver Station (BTS) Tower at Dobra Brabauer in, Karas Region - Namibia</p> <p>Location: Dobra Brabauer in, Karas Region - Namibia</p> <p>Coordinates: 22°07'01.1"S 17°05'37.8"E</p>	<p>Project Title: Environmental Impact Assessment (EIA) Study for the Proposed Construction and Operation of a Telecommunication Base Transceiver Station (BTS) Tower at Howabebes 51 in, Karas Region.</p> <p>Location: Howabebes Settlement, Karas Region - Namibia</p> <p>Coordinates: 26°49'02.3"S, 17°48'11.5"E</p>
<p>Project Title: Environmental Impact Assessment (EIA) Study for the Proposed Construction and Operation of a Telecommunication Base Transceiver Station (BTS) Tower at Uvovka village, Oshana Region.</p> <p>Location: Uvovka village, Oshana Region - Namibia</p> <p>Coordinates: 17°57'34.7"S 16°16'39.1"E</p>	<p>Project Title: Environmental Impact Assessment (EIA) Study for the Proposed Construction and Operation of a Telecommunication Base Transceiver Station (BTS) Tower at Muvoviki Village in, Oshana Region.</p> <p>Location: Muvoviki Village in, Oshana Region - Namibia</p> <p>Coordinates: 18°08'05.7"S 15°27'55.9"E</p>	<p>Project Title: Environmental Impact Assessment (EIA) Study for the Proposed Construction and Operation of a Telecommunication Base Transceiver Station (BTS) Tower at Namulunge Village in, Omsati Region.</p> <p>Location: Namulunge Village in, Omsati Region - Namibia</p> <p>Coordinates: 17°29'41.0"S 15°00'51.0"E</p>	<p>Project Title: Environmental Impact Assessment (EIA) Study for the Proposed Construction and Operation of a Telecommunication Base Transceiver Station (BTS) Tower at Oupandu Village in, Omsati Region.</p> <p>Location: Oupandu Village in, Omsati Region - Namibia</p> <p>Coordinates: 17°34'05.9"S 15°36'35.6"E</p>
<p>Project Title: Environmental Impact Assessment (EIA) Study for the Proposed Construction and Operation of a Telecommunication Base Transceiver Station (BTS) Tower at Tandoro Settlements in, Karungu West Region.</p> <p>Location: Tandoro Settlements in, Karungu West Region - Namibia</p> <p>Coordinates: 17°46'17.6"S 18°47'28.5"E</p>	<p>Project Title: Environmental Impact Assessment (EIA) Study for the Proposed Construction and Operation of a Telecommunication Base Transceiver Station (BTS) Tower at Katenge-Livene Settlements in Karungu East Region.</p> <p>Location: Katenge Livene Settlements in Karungu East Region - Namibia</p> <p>Coordinates: 17°05'06.8"S 20°28'12.5"E</p>	<p>Project Title: Environmental Impact Assessment (EIA) Study for the Proposed Construction and Operation of a Telecommunication Base Transceiver Station (BTS) Tower at Doynga Settlement in, Karungu East Region.</p> <p>Location: Doynga Settlement in, Karungu East Region - Namibia</p> <p>Coordinates: 18°05'14.8"S 21°28'15.4"E</p>	<p>Project Title: Environmental Impact Assessment (EIA) Study for the Proposed Construction and Operation of a Telecommunication Base Transceiver Station (BTS) Tower at Nambobela Village in, Zambezi Region.</p> <p>Location: Nambobela Village in, Zambezi Region - Namibia</p> <p>Coordinates: 17°49'23.7"S 24°50'11.0"E</p>
<p>Project Title: Environmental Impact Assessment (EIA) Study for the Proposed Construction and Operation of a Telecommunication Base Transceiver Station (BTS) Tower at Muthibia Village in Zambezi Region - Namibia</p> <p>Location: Muthibia Village in Zambezi Region - Namibia</p> <p>Coordinates: 17°55'40.4"S 24°37'42.0"E</p>	<p>Project Title: Environmental Impact Assessment (EIA) Study for the Proposed Construction and Operation of a Telecommunication Base Transceiver Station (BTS) Tower at Walvis Bay Extension 17 in, Erongo Region - Namibia</p> <p>Location: Walvis Bay Extension 17 in, Erongo Region - Namibia</p> <p>Coordinates: To be Confirmed</p>		

Contact Details D&P Engineers and Environmental Consultants
Attention: Mr. T Kaugonde
PO Box 8421, Windhoek, Namibia
Email: tkaugonde@dep.com.na
Tel: +264 61 302822

Interested & Affected Parties (I&AP) Registration and submission of comments: To comment or request further information on the project, please register with the consultant (contact details below) as an I&AP before end of business on 25 September 2022. A Background Information Document (BID) has been compiled for the project and is available upon requests to the consultant, contact below.

As registered I&APs will be informed throughout the assessment process and will be provided with further opportunities for review and submission of comments. Comments can also be lodged via the online form given:
<https://forms.gle/7HvEz8nQ2nd6a66>



HOME LOAN INVESTMENT CC
Reg. cc: 20080449

P.O. BOX 2036, Grootfontein
Tel: 067-240 210
Cell: +264 81 249 1823
Email: home loan@mlas.com.na

NB: We are inviting our new clients to register and qualify to be given loans within a period of 48 working hours, we offer the minimum loan amount of N\$5,000.00 to maximum amount N\$250,000.00 to private individuals, both employed and unemployed persons are welcome to register for a loan, in order to register clients should have the following documents:

- Membership registration fee of N\$1,000.00 (COMPULSORY) advance;
 - A valid document, name card, passport, driver's license;
 - Latest pay slip, 3 months bank statement;
- NOTE: Approval of all mortgage loans is subject to credit check by the bank between 11-18 months.
- Please take note: Backlog of clients on EIC, need an approval on reasonable creditable condition.

Home Loan Investment CC, is pleased to advise our valuable clients that telephonically consultation, applicant or clients are acceptable and conversations will be recorded by Home Loan Investment CC and certificate before approval of the mortgage and professional services.

CONTACT THE DIRECTOR
Mr. Muan at Government main branch at Oppenlands Mall Complex
Office Hours: MON-FRI 08H00 to 16H30
TELE: 067 240 210 / CELL: 081 249 1823
FAX: 067 241 5414 | Email: home loan@mlas.com.na

WANT TO ADVERTISE?

**Email: sales@observer.com.na
marketing@observer.com.na**

CLASSIFIEDS

Adopt, Don't Shop!



HELLO!
They call me **RAFIKI** I'm 10 WEEKS OLD FEMALE DOG.
I'm happy, energetic, and friendly!

Rafiki, is a 10 months old female dog. My name means friend, in Kiswahili and best believe I live up to my name, once I've grown fond of my human and have built a bond, I enjoy average physical exercise, and I have a short easy-care coat. I know how to sit, and I walk really well on a leash. I am partially house trained. I would appreciate a home that allows me to sleep indoors for that is what I am accustomed to.



HELLO!
They call me **HUNTER** I'm 1 YEAR OLD MALE CAT.
I'm happy, energetic, and friendly!

Hunter a 2-year-old male cat looking for his purrfect home. He is an easy-going cat, that enjoys the attention and affection he gets from humans. Hunter will thrive in a home with other cats.

SPCA Windhoek
145 Robert Mugabe Avenue,
Windhoek
Tel: 061-238 654
Emergency Cell: 081-124 4520
(After Hours Only)
Email: info@spcawindhoek.org.na



NOTIFICATION AND CALL FOR PUBLIC PARTICIPATION ENVIRONMENTAL IMPACT ASSESSMENT (EIA) PROCESS FOR THE PROPOSED DEVELOPMENT OF 22 TELECOMMUNICATION BASE-TRANSCIVER STATION (BTS) TOWERS ON SELECTED SITES COUNTRYWIDE, NAMIBIA

D & P Engineers and Environmental Consultants hereby gives notice to all potentially interested and Affected Parties (I&APs) that an application will be made to the Environmental Commissioner in terms of the Environmental Management Act (No 7 of 2007) and the Environmental Impact Assessment Regulations (GN 30 of 6 February 2012) for the proposed development of twenty two (22) base transceiver station (BTS) towers.

Powercom (PTY) LTD herein referred to as the proponent has identified different areas that needs improved communication alternatives in Namibia due to growth in population and economic activities. To achieve the objective of improved telecommunication connectivity, Powercom has been appointed by Telkom Namibia its sister company to establish telecommunication towers across the identified different locations. In this respect, Powercom has identified sites to construct and operate 22 telecommunication base transceiver station towers across the country.

Powercom (the proponent) has appointed D&P Engineers and Environmental Consultants to conduct the EIA processes for these proposed BTS tower developments. The EIA is being conducted to satisfy the Namibian environmental legislative requirements. The general public as well as any interested and affected Parties (I&APs) are hereby invited to register their concerns and notify the consultant of any potential environmental and social impacts that may be triggered by the project.

The proposed projects for which the Environmental Clearance Certificates will be applied for are as follows:

<p>1. Project Title: Environmental Impact Assessment (EIA) Study for the Proposed Construction and Operation of a Telecommunication Base Transceiver Station (BTS) Tower at Seeloh Settlement in, Karas Region.</p> <p>Location: Seeloh Settlement, Karas Region - Namibia</p> <p>Coordinates: 26°49'02.3"S, 17°48'11.5"E</p>	<p>2. Project Title: Environmental Impact Assessment (EIA) Study for the Proposed Construction and Operation of a Telecommunication Base Transceiver Station (BTS) Tower at Lihongo Village in, Oshana Region.</p> <p>Location: Lihongo Village, Oshana Region - Namibia</p> <p>Coordinates: 18°02'11.8"S 18°30'24.7"E</p>	<p>Project Title: Environmental Impact Assessment (EIA) Study for the Proposed Construction and Operation of a Telecommunication Base Transceiver Station (BTS) Tower at Otshanda Village in Oshana Region.</p> <p>Location: Otshanda Village in Oshana Region - Namibia</p> <p>Coordinates: 17°49'28.0"S 15°38'17.1"E</p>	<p>Project Title: Environmental Impact Assessment (EIA) Study for the Proposed Construction and Operation of a Telecommunication Base Transceiver Station (BTS) Tower at Otshelo Village in, Omusati Region.</p> <p>Location: Otshelo Village in, Omusati Region - Namibia</p> <p>Coordinates: 17°52'35.3"S 15°07'42.2"E</p>
<p>Project Title: Environmental Impact Assessment (EIA) Study for the Proposed Construction and Operation of a Telecommunication Base Transceiver Station (BTS) Tower at Onkwenene Border Post, Omusati Region.</p> <p>Location: Onkwenene Border Post, Omusati Region - Namibia</p> <p>Coordinates: 17°25'05.0"S 14°54'07.8"E</p>	<p>Project Title: Environmental Impact Assessment (EIA) Study for the Proposed Construction and Operation of a Telecommunication Base Transceiver Station (BTS) Tower at Epanga Village, Oshana Region.</p> <p>Location: Epanga Village, Oshana Region - Namibia</p> <p>Coordinates: 17°24'37.9"S 18°26'34.7"E</p>	<p>Project Title: Environmental Impact Assessment (EIA) Study for the Proposed Construction and Operation of a Telecommunication Base Transceiver Station (BTS) Tower at Mujaji Village in, Karoo West Region.</p> <p>Location: Mujaji Village in, Karoo West Region - Namibia</p> <p>Coordinates: 17°52'40.8"S 19°35'52.4"E</p>	<p>Project Title: Environmental Impact Assessment (EIA) Study for the Proposed Construction and Operation of a Telecommunication Base Transceiver Station (BTS) Tower at Kwango Village in, Kwango East Region.</p> <p>Location: Kwango Village in, Kwango East Region - Namibia</p> <p>Coordinates: 17°57'01.7"S 23°08'52.5"E</p>
<p>Project Title: Environmental Impact Assessment (EIA) Study for the Proposed Construction and Operation of a Telecommunication Base Transceiver Station (BTS) Tower at Gurus, Oshana Region.</p> <p>Location: Gurus, Oshana Region - Namibia</p> <p>Coordinates: 19°14'52.4"S 17°07'55.3"E</p>	<p>Project Title: Environmental Impact Assessment (EIA) Study for the Proposed Construction and Operation of a Telecommunication Base Transceiver Station (BTS) Tower at Ikumbe Village in, Zambezi Region.</p> <p>Location: Ikumbe Village, Zambezi Region - Namibia</p> <p>Coordinates: 17°47'28.3"S 24°36'56.9"E</p>	<p>Project Title: Environmental Impact Assessment (EIA) Study for the Proposed Construction and Operation of a Telecommunication Base Transceiver Station (BTS) Tower at Dolra Braakwater in, Khomas Region - Namibia</p> <p>Location: Dolra Braakwater in, Khomas Region - Namibia</p> <p>Coordinates: 22°25'42.1"S 17°05'37.6"E</p>	<p>Project Title: Environmental Impact Assessment (EIA) Study for the Proposed Construction and Operation of a Telecommunication Base Transceiver Station (BTS) Tower at Houdbees 51 in, Karas Region.</p> <p>Location: Houdbees Settlement, Karas Region - Namibia</p> <p>Coordinates: 16°49'02.3"S, 17°48'11.5"E</p>
<p>Project Title: Environmental Impact Assessment (EIA) Study for the Proposed Construction and Operation of a Telecommunication Base Transceiver Station (BTS) Tower at Uuyika village, Oshana Region.</p> <p>Location: Uuyika Village, Oshana Region - Namibia</p> <p>Coordinates: 17°57'24.7"S 18°28'39.1"E</p>	<p>Project Title: Environmental Impact Assessment (EIA) Study for the Proposed Construction and Operation of a Telecommunication Base Transceiver Station (BTS) Tower at Ukoufipa Village in, Oshana Region.</p> <p>Location: Ukoufipa Village in, Oshana Region - Namibia</p> <p>Coordinates: 18°08'05.7"S 15°27'55.3"E</p>	<p>Project Title: Environmental Impact Assessment (EIA) Study for the Proposed Construction and Operation of a Telecommunication Base Transceiver Station (BTS) Tower at Nankwale Anamungu Village in, Omusati Region.</p> <p>Location: Nankwale Anamungu Village in, Omusati Region - Namibia</p> <p>Coordinates: 17°29'41.0"S 15°05'51.0"E</p>	<p>Project Title: Environmental Impact Assessment (EIA) Study for the Proposed Construction and Operation of a Telecommunication Base Transceiver Station (BTS) Tower at Orupandu Village in, Omusati Region.</p> <p>Location: Orupandu Village in, Omusati Region - Namibia</p> <p>Coordinates: 17°54'05.3"S 15°08'23.8"E</p>
<p>Project Title: Environmental Impact Assessment (EIA) Study for the Proposed Construction and Operation of a Telecommunication Base Transceiver Station (BTS) Tower at Tondoro Settlement in, Kwango West Region.</p> <p>Location: Tondoro Settlement in, Kwango West Region - Namibia</p> <p>Coordinates: 17°46'17.6"S 18°17'28.5"E</p>	<p>Project Title: Environmental Impact Assessment (EIA) Study for the Proposed Construction and Operation of a Telecommunication Base Transceiver Station (BTS) Tower at Ndongo-Lyena Settlement in Kwango East Region.</p> <p>Location: Ndongo Lyena Settlement in Kwango East Region - Namibia</p> <p>Coordinates: 17°57'06.8"S 20°28'12.8"E</p>	<p>Project Title: Environmental Impact Assessment (EIA) Study for the Proposed Construction and Operation of a Telecommunication Base Transceiver Station (BTS) Tower at Dvughu Settlement in, Kwango East Region.</p> <p>Location: Dvughu Settlement in, Kwango East Region - Namibia</p> <p>Coordinates: 18°05'11.8"S 21°28'15.4"E</p>	<p>Project Title: Environmental Impact Assessment (EIA) Study for the Proposed Construction and Operation of a Telecommunication Base Transceiver Station (BTS) Tower at Nankwale Village in, Zambezi Region.</p> <p>Location: Nankwale Village in, Zambezi Region - Namibia</p> <p>Coordinates: 17°49'28.7"S 24°50'11.0"E</p>
<p>Project Title: Environmental Impact Assessment (EIA) Study for the Proposed Construction and Operation of a Telecommunication Base Transceiver Station (BTS) Tower at Mutikile Village in Zambezi Region.</p> <p>Location: Mutikile Village in Zambezi Region - Namibia</p> <p>Coordinates: 17°55'40.4"S 24°37'42.0"E</p>	<p>Project Title: Environmental Impact Assessment (EIA) Study for the Proposed Construction and Operation of a Telecommunication Base Transceiver Station (BTS) Tower at Walvis Bay Extension 17 in, Erongo Region.</p> <p>Location: Walvis Bay Extension 17 in, Erongo Region - Namibia</p> <p>Coordinates: To be confirmed</p>		

Contact Details: D&P Engineers and Environmental Consultants
Attention: M. T. Keshingani
PO Box 8401, Windhoek, Namibia
Email: info@dpeng.com.na
Tel: +264 51 303012

Interested & Affected Parties (I&APs) Registration and submission of comments to comment or receive further information on the project, please register with the consultant (contact details below) as an I&AP before end of business on 25 September 2022. A Background Information Document (BID) has been compiled for the project and is available upon request to the consultant, contact below.

All registered I&APs will be informed throughout the assessment process and will be provided with further opportunities for review and submission of comments. Comments can also be lodged via the online form given.

<https://forms.gle/7PFCeohGPhJdUc0d>

INFORMATION AND COMMUNICATION TECHNOLOGY FOCUS - 30 SEPTEMBER 2022

TECHNOLOGY ENHANCEMENTS
ARTIFICIAL INTELLIGENCE
BOARDROOM SOLUTIONS
PAYMENT SOLUTIONS
DATA MANAGEMENT
COMMUNICATION
GAMING
MORE...

BOOK YOUR
ADVERTISING
AND EDITORIAL
SPACE TODAY!



CONTACT PETER ON 085 750 6616 OR advertise@observer.com.na



SITE INCEPTION REGISTER:

**ENVIRONMENTAL AND SOCIAL MANAGEMENT PLAN: THE PROPOSED TELECOMMUNICATION
BASE TRANSCIVER STATION (BTS) TOWER AT UUVUDIYA VILLAGE IN, OSHANA REGION -
NAMIBIA.**

VENUE: UUVUDIYA

TIME: 13:02

DATE: 24/Sept/2022

NAME	Organisation/ Location	PHONE NUMBER	SIGNATURE
Ekundu	Uuvudhiya	085 2377496	
Leonard	Uuvudhiya	081 078 6000	
Elindi	Uuvudhiya	081 7725509	
Jonias	Uuvudhiya	081 6628494	
Killeome	Uuvudhiya	0814021529	
Paulina	Uuvudhiya	0812395628	
Emilia	Uuvudhiya	0817725533	



NAME	Organisation/ Location	PHONE NUMBER	SIGNATURE
Raeel' Haulero		0812050900	<i>[Signature]</i>
Monika Dsef	uvvudhaya	0814049738	<i>[Signature]</i>
Seblon Mupps	uvvudhaya	0513433805	<i>[Signature]</i>
Simon Eton Lukag	uvvudhaya	0512894864	<i>[Signature]</i>
Silvanus Johannes	Ondjungleme	—	<i>[Signature]</i>
Andreas William	uvvudhaya	0818552072496	<i>[Signature]</i>
Paulus Pavyus	uvvudhaya uvvudhaya	08123445628	<i>[Signature]</i>
Jason Jason	uvvudhaya	0812655227	<i>[Signature]</i>
Imrand Willem	Ondjungleme	0817589695	<i>[Signature]</i>
Fanuel Konesho	oludhalewegele	0817709131	<i>[Signature]</i>
Amuchel Thomas	Ondjungleme	0815756018	<i>[Signature]</i>
Amukwaga	Ondjungleme	0816377720	<i>[Signature]</i>
Shidlo	Ondjungleme	0817083479	<i>[Signature]</i>
Abongo Thomas	Ondjungleme	0813146648	<i>[Signature]</i>
David Abnel	uvvudhaya	0812711732	<i>[Signature]</i>

REGISTRATION AND COMMENTS FORM

ENVIRONMENTAL AND SOCIAL MANAGEMENT PLAN: THE PROPOSED
TELECOMMUNICATION BASE TRANSCIEVER STATION (BTS) TOWER ~~LOT SHAANDA~~
~~OMUSATI REGION~~ NAMIBIA.

KINDLY COMPLETE THIS FORM IN DETAIL AND RETURN TO:

D&P Engineers and environmental consultants
Environmental Consultant: Tendai E. Kasinganeti
Phone: +264813634904
Fax: +264 61 255 207
Email: tkasinganeti@dpe.com.na

PERSONAL DETAILS

Name & Surname *Amusile J. Frimister*
Postal Address *Caprivi* Email
Town.....

What is your main area of interest regarding the proposed developments?

Good communication

Do you have any points of concern or support regarding the proposed projects?
If "yes", please briefly list these in point format:

..... YES NO
.....
.....
.....
.....
.....

Do you wish this project to proceed?

YES NO

STAMP/SIGNATURE
[Signature]

REGISTRATION AND COMMENTS FORM

ENVIRONMENTAL AND SOCIAL MANAGEMENT PLAN: THE PROPOSED TELECOMMUNICATION BASE TRANSCIVER STATION (BTS) TOWER ~~OTSHANDA~~ *uruchinga*
~~OTSHANDA REGION~~ NAMIBIA.

OTSHANDA

KINDLY COMPLETE THIS FORM IN DETAIL AND RETURN TO:

D&P Engineers and environmental consultants
Environmental Consultant: Tendai E. Kasinganeti
Phone: +264813634904
Fax: +264 61 255 207
Email: tkasinganeti@dpe.com.na

PERSONAL DETAILS

Name & Surname *AUGUST DANIEL*
Postal Address *URUCHINGA* Email *N/A*
Town *OTSHANDA*

What is your main area of interest regarding the proposed developments?
- GOOD COMMUNICATION NETWORK

Do you have any points of concern or support regarding the proposed projects?
If "yes", please briefly list these in point format:

YES / NO

Do you wish this project to proceed?

YES / NO

STAMP/SIGNATURE

[Handwritten Signature]

REGISTRATION AND COMMENTS FORM

ENVIRONMENTAL AND SOCIAL MANAGEMENT PLAN: THE PROPOSED
TELECOMMUNICATION BASE TRANSCIVER STATION (BTS) TOWER ~~YUYUWIYA~~
~~MUSATI REGION~~ NAMIBIA.

KINDLY COMPLETE THIS FORM IN DETAIL AND RETURN TO:

D&P Engineers and environmental consultants
Environmental Consultant: Tendai E. Kasinganeti
Phone: +264813634904
Fax: +264 61 255 207
Email: tkasinganeti@dpe.com.na

PERSONAL DETAILS

Name & Surname Karpus Ekandjo
Postal Address 179
Town YUYUWIYA / OSHAKATI Email NIA
0812060900

What is your main area of interest regarding the proposed developments?
- Good communication
- Good network

Do you have any points of concern or support regarding the proposed projects?
If "yes", please briefly list these in point format:

NO YES / NO

Do you wish this project to proceed?

YES / NO

STAMP/SIGNATURE



REGISTRATION AND COMMENTS FORM

ENVIRONMENTAL AND SOCIAL MANAGEMENT PLAN: THE PROPOSED TELECOMMUNICATION BASE TRANSCIVER STATION (BTS) TOWER AT OS hana Uusud hite ~~OS hana~~ ~~MUSATI REGION~~ -NAMIBIA.

KINDLY COMPLETE THIS FORM IN DETAIL AND RETURN TO:

D&P Engineers and environmental consultants
Environmental Consultant: Tendai E. Kasinganeti
Phone: +264813634904
Fax: +264 61 255 207
Email: tkasinganeti@dpe.com.na

PERSONAL DETAILS

Name & Surname Shilongo Stefanus
Postal Address Uusud hite Email _____
Town Os hana

What is your main area of interest regarding the proposed developments?

Good Communication and
good Network for us.

Do you have any points of concern or support regarding the proposed projects?
If "yes", please briefly list these in point format:

YES / NO

Do you wish this project to proceed?

YES / NO

STAMP/SIGNATURE

Shilongo Stefanus

REGISTRATION AND COMMENTS FORM

ENVIRONMENTAL AND SOCIAL MANAGEMENT PLAN: THE PROPOSED
TELECOMMUNICATION BASE TRANSCIEVER STATION (BTS) TOWER AT ~~ASHANA~~ ^{Uyuvudhiya}
~~OMUSATI REGION~~ ^{ASHANA} NAMIBIA.

KINDLY COMPLETE THIS FORM IN DETAIL AND RETURN TO:

D&P Engineers and environmental consultants
Environmental Consultant: Tendai E. Kasinganeti
Phone: +264813634904
Fax: +264 61 255 207
Email: tkasinganeti@dpe.com.na

PERSONAL DETAILS

Name & Surname Paulina Ellipus
Postal Address Uyuvudhiya Email _____
Town Ashana

What is your main area of interest regarding the proposed developments?

Good communication and
good Network

Do you have any points of concern or support regarding the proposed projects?
If "yes", please briefly list these in point format:

YES / NO

Do you wish this project to proceed?

YES / NO

STAMP/SIGNATURE

P.F.

REGISTRATION AND COMMENTS FORM

ENVIRONMENTAL AND SOCIAL MANAGEMENT PLAN: THE PROPOSED *Uunudhya*
TELECOMMUNICATION BASE TRANSCIVER STATION (BTS) TOWER AT *Uunudhya*
oshana (NAMULENGE VILLAGE IN OMUSATI REGION) - NAMIBIA

KINDLY COMPLETE THIS FORM IN DETAIL AND RETURN TO:

D&P Engineers and environmental consultants
Environmental Consultant: Tendai E. Kasinganeti
Phone: +264813634904
Fax: +264 61 255 207
Email: tkasinganeti@dpe.com.na

PERSONAL DETAILS

Name & Surname *Sebron mupupa*
Postal Address *Uunudhya*
Town *oshana* Email *0812433808*

What is your main area of interest regarding the proposed developments?

Good Communication
Good Network

Do you have any points of concern or support regarding the proposed projects?
If "yes", please briefly list these in point format:

.....
.....
.....
.....
.....
.....
.....

YES / NO

Do you wish this project to proceed?

YES / NO

STAMP/SIGNATURE
S. M

REGISTRATION AND COMMENTS FORM

ENVIRONMENTAL AND SOCIAL MANAGEMENT PLAN: THE PROPOSED
TELECOMMUNICATION BASE TRANSCIEVER STATION (BTS) TOWER **ENAKAYALE**
NAMULENGE VILLAGE IN, OMUSATI REGION, NAMIBIA

KINDLY COMPLETE THIS FORM IN DETAIL AND RETURN TO:

D&P Engineers and environmental consultants
Environmental Consultant: Tendai E. Kasinganeti
Phone: +264813634904
Fax: +264 61 255 207
Email: tkasinganeti@dpe.com.na

PERSONAL DETAILS

Name & Surname: Simon Etono Uulcango
Postal Address: Uvudhwa Email: 0812894864
Town: Oshakati

What is your main area of interest regarding the proposed developments?

Good Communication
Good Network

Do you have any points of concern or support regarding the proposed projects?
If "yes", please briefly list these in point format:

.....
.....
.....
.....
.....
.....

YES / NO

Do you wish this project to proceed?

YES / NO

STAMP/SIGNATURE
E. Uulcango

REGISTRATION AND COMMENTS FORM

ENVIRONMENTAL AND SOCIAL MANAGEMENT PLAN: THE PROPOSED
TELECOMMUNICATION BASE TRANSCIVER STATION (BTS) TOWER AT OTSHAANDA
OMUSATI REGION, NAMIBIA.

KINDLY COMPLETE THIS FORM IN DETAIL AND RETURN TO:

D&P Engineers and environmental consultants
Environmental Consultant: Tendai E. Kasinganeti
Phone: +264813634904
Fax: +264 61 255 207
Email: tkasinganeti@dpe.com.na

PERSONAL DETAILS

Name & Surname: Leonard Iiyambo
Postal Address: P.O. Box 95909 Email: liiyamboleonard@gmail.com
Town: Swakopmund, Windhoek

What is your main area of interest regarding the proposed developments?

It help people communicate people to people
Good network

Do you have any points of concern or support regarding the proposed projects?
If "yes", please briefly list these in point format:

None

YES/ NO

Do you wish this project to proceed?

YES/ NO

STAMP/SIGNATURE
Leonard Iiyambo

REGISTRATION AND COMMENTS FORM

ENVIRONMENTAL AND SOCIAL MANAGEMENT PLAN: THE PROPOSED
TELECOMMUNICATION BASE TRANSCEIVER STATION (BTS) TOWER **OTSHAANDA**
OMUSATI REGION, NAMIBIA.

KINDLY COMPLETE THIS FORM IN DETAIL AND RETURN TO:

D&P Engineers and environmental consultants
Environmental Consultant: Tendai E. Kasinganeti
Phone: +264813634904
Fax: +264 61 255 207
Email: tkasinganeti@dpe.com.na

PERSONAL DETAILS

Name & Surname... *E. Lindi Festus*
Postal Address... *17/* Email
Town.....

What is your main area of interest regarding the proposed developments?

*It help people to communicate
Good network*

Do you have any points of concern or support regarding the proposed projects?
If "yes", please briefly list these in point format:

None YES NO

Do you wish this project to proceed?

YES NO

STAMP/SIGNATURE
E. Lindi

REGISTRATION AND COMMENTS FORM

ENVIRONMENTAL AND SOCIAL MANAGEMENT PLAN: THE PROPOSED
TELECOMMUNICATION BASE TRANSCIVER STATION (BTS) TOWER **OTSHAANDA**
MUSATI REGION NAMIBIA.

KINDLY COMPLETE THIS FORM IN DETAIL AND RETURN TO:

D&P Engineers and environmental consultants
Environmental Consultant: Tendai E. Kasinganeti
Phone: +264813634904
Fax: +264 61 255 207
Email: tkasinganeti@dpe.com.na

PERSONAL DETAILS

Name & Surname Fanuel Komesho
Postal Address Email os1
Town uu Nduhira

What is your main area of interest regarding the proposed developments?

⇒ good connection
⇒

Do you have any points of concern or support regarding the proposed projects?
If "yes", please briefly list these in point format:

..... YES / NO
.....
.....
.....
.....
.....

Do you wish this project to proceed?

YES / NO

STAMP/SIGNATURE

Tendai E. Kasinganeti

REGISTRATION AND COMMENTS FORM

ENVIRONMENTAL AND SOCIAL MANAGEMENT PLAN: THE PROPOSED
TELECOMMUNICATION BASE TRANSCIEVER STATION (BTS) TOWER [REDACTED],
[REDACTED] NAMIBIA.

KINDLY COMPLETE THIS FORM IN DETAIL AND RETURN TO:

D&P Engineers and environmental consultants
Environmental Consultant: Tendai E. Kasinganeti
Phone: +264813634904
Fax: +264 61 255 207
Email: tkasinganeti@dpe.com.na

PERSONAL DETAILS

Name & Surname: monika Alweendo
Postal Address: Uuyudhiya Email: _____
Town: Dshakati

What is your main area of interest regarding the proposed developments?

1.0. Communicate our nation from
different place to place and good
network for us.

Do you have any points of concern or support regarding the proposed projects?
If "yes", please briefly list these in point format:

NO YES NO

Do you wish this project to proceed?

YES NO

STAMP/SIGNATURE

Alweendo

081 4049 735

REGISTRATION AND COMMENTS FORM

ENVIRONMENTAL AND SOCIAL MANAGEMENT PLAN: THE PROPOSED
TELECOMMUNICATION BASE TRANSCIVER STATION (BTS) TOWER **OTSHAANDA**
MUSATI REGION, NAMIBIA.

KINDLY COMPLETE THIS FORM IN DETAIL AND RETURN TO:

D&P Engineers and environmental consultants
Environmental Consultant: Tendai E. Kasinganeti
Phone: +264813634904
Fax: +264 61 255 207
Email: tkasinganeti@dpe.com.na

PERSONAL DETAILS

Name & Surname..... *Natanqwe umwalula*
Postal Address.....
Town..... *uu Tuduhiya* Email.....

What is your main area of interest regarding the proposed developments?

good connection

Do you have any points of concern or support regarding the proposed projects?
If "yes", please briefly list these in point format:

YES / NO

Do you wish this project to proceed?

YES / NO

STAMP/SIGNATURE

Tendai E. Kasinganeti

REGISTRATION AND COMMENTS FORM

ENVIRONMENTAL AND SOCIAL MANAGEMENT PLAN: THE PROPOSED
TELECOMMUNICATION BASE TRANSCIEVER STATION (BTS) TOWER AT OTSHAANDA
OMUSATI REGION, NAMIBIA.

KINDLY COMPLETE THIS FORM IN DETAIL AND RETURN TO:

D&P Engineers and environmental consultants
Environmental Consultant: Tendai E. Kasinganeti
Phone: +264813634904
Fax: +264 61 255 207
Email: tkasinganeti@dpe.com.na

PERSONAL DETAILS

Name & Surname... Andreas Wilheam
Postal Address... 065 Oshakati Email... NO
Town... Oshakati

What is your main area of interest regarding the proposed developments?

No good Net work

Do you have any points of concern or support regarding the proposed projects?
If "yes", please briefly list these in point format:

yes

YES / NO

Do you wish this project to proceed?

YES / NO

STAMP/SIGNATURE
Andreas

REGISTRATION AND COMMENTS FORM

ENVIRONMENTAL AND SOCIAL MANAGEMENT PLAN: THE PROPOSED
TELECOMMUNICATION BASE TRANSCIVER STATION (BTS) TOWER AT ~~OTSHAANDA~~
~~OMUSATI REGION~~ NAMIBIA.

KINDLY COMPLETE THIS FORM IN DETAIL AND RETURN TO:

D&P Engineers and environmental consultants
Environmental Consultant: Tendai E. Kasinganeti
Phone: +264813634904
Fax: +264 61 255 207
Email: tkasinganeti@dpe.com.na

PERSONAL DETAILS

Name & Surname... *David Abner*
Postal Address.....
Town.....
Email *abner46@gmail.com*

What is your main area of interest regarding the proposed developments?

for good communication

Do you have any points of concern or support regarding the proposed projects?
If "yes", please briefly list these in point format:

YES / NO

Do you wish this project to proceed?

YES / NO

STAMP/SIGNATURE

David Abner

REGISTRATION AND COMMENTS FORM

ENVIRONMENTAL AND SOCIAL MANAGEMENT PLAN: THE PROPOSED
TELECOMMUNICATION BASE TRANSCIEVER STATION (BTS) TOWER AT OTSHAANDA
OMUSATI REGION, NAMIBIA.

KINDLY COMPLETE THIS FORM IN DETAIL AND RETURN TO:

D&P Engineers and environmental consultants
Environmental Consultant: Tendai E. Kasinganeti
Phone: +264813634904
Fax: +264 61 255 207
Email: tkasinganeti@dpe.com.na

PERSONAL DETAILS

Name & Surname Musiku Vaino
Postal Address Email
Town

What is your main area of interest regarding the proposed developments?

Good Communication
.....
.....
.....

Do you have any points of concern or support regarding the proposed projects?
If "yes", please briefly list these in point format:

.....
.....
.....
.....
.....
.....
.....
.....
.....

YES / NO

Do you wish this project to proceed?

YES / NO

STAMP/SIGNATURE
[Signature]

REGISTRATION AND COMMENTS FORM

ENVIRONMENTAL AND SOCIAL MANAGEMENT PLAN: THE PROPOSED
TELECOMMUNICATION BASE TRANSCIVER STATION (BTS) TOWER AT OTSHAANDA
OMUSATI REGION, NAMIBIA.

KINDLY COMPLETE THIS FORM IN DETAIL AND RETURN TO:

D&P Engineers and environmental consultants
Environmental Consultant: Tendai E. Kasinganeti
Phone: +264813634904
Fax: +264 61 255 207
Email: tkasinganeti@dpe.com.na

PERSONAL DETAILS

Name & Surname Silivanus Johannes
Postal Address Uuyudhiya Email
Town Uuyudhiya

What is your main area of interest regarding the proposed developments?

⇒ God connection.

Do you have any points of concern or support regarding the proposed projects?
If "yes", please briefly list these in point format:

YES / NO

Do you wish this project to proceed?

YES / NO

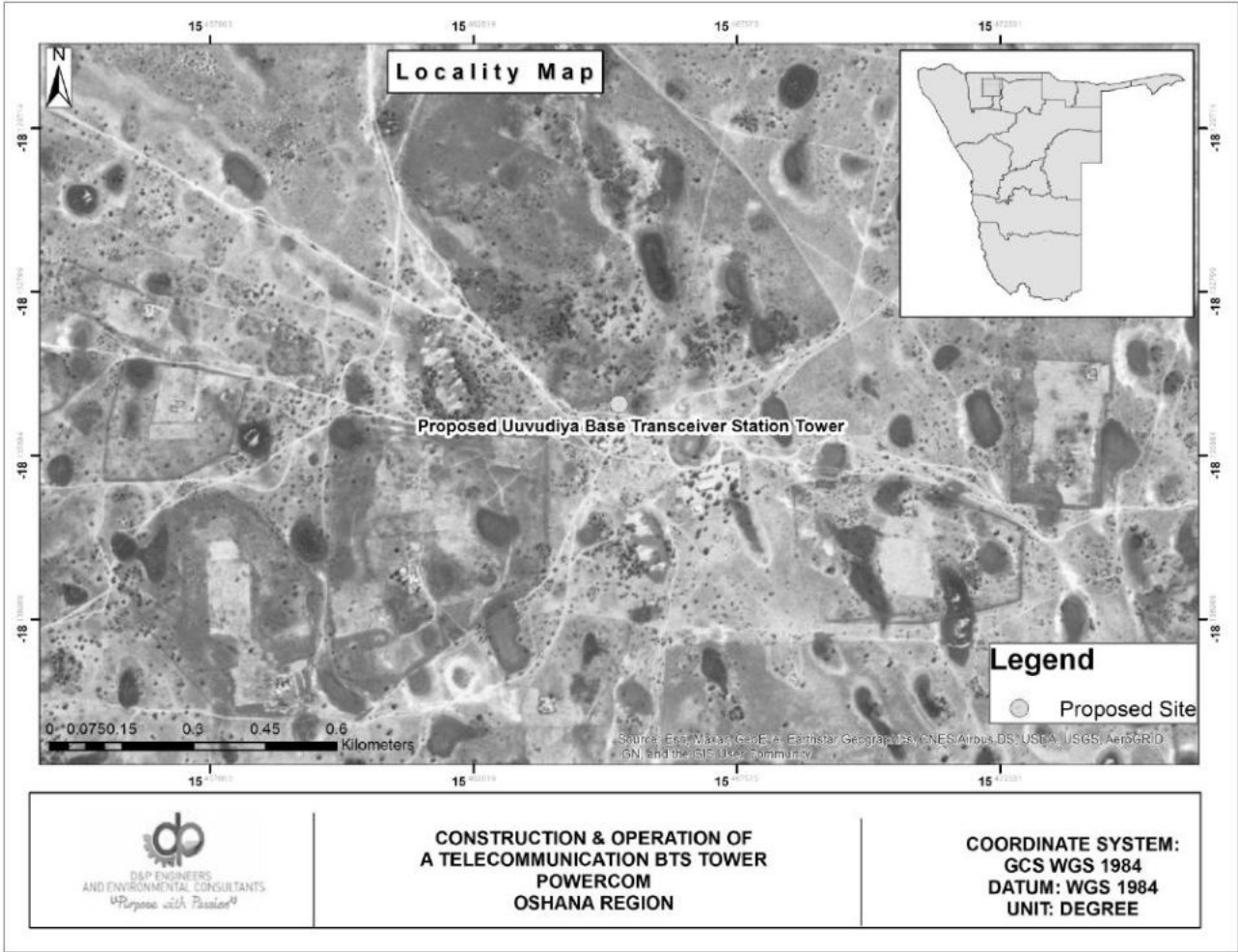
STAMP/SIGNATURE

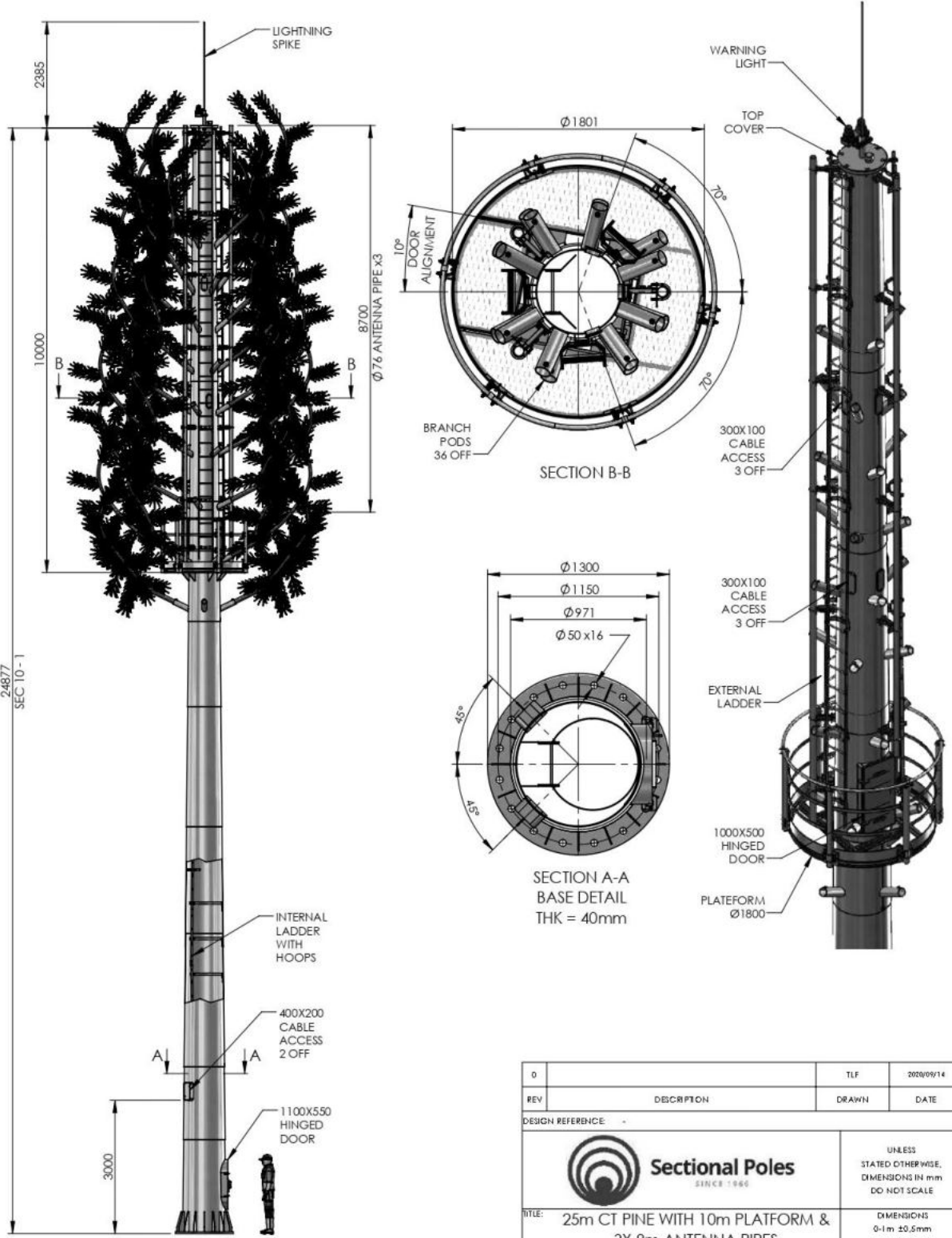
Mk Tendai


Appendix B:

Maps and Layouts

- 1. Locality Map**
- 2. Layout Plan**





0		TLF	2020/09/14
REV	DESCRIPTION	DRAWN	DATE
DESIGN REFERENCE			
 Sectional Poles <small>SINCE 1960</small>		UNLESS STATED OTHERWISE, DIMENSIONS IN mm DO NOT SCALE	
TITLE: 25m CT PINE WITH 10m PLATFORM & 3X 8m ANTENNA PIPES		DIMENSIONS 0-1m ±0.5mm 1-3m ±1.0mm	
DRW NO: ILG25PI-10PL-TV10B-UNV-R0		ANGLES ±2°	
CLIENT:		SHEET: 1 OF 1	

Appendix C:

Land Tenure, Approvals and Licenses

- 1. Proof of Land Ownership/
Authorisation for
development/ Consent for
Development**



REPUBLIC OF NAMIBIA

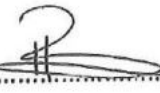
UUKWAMBI	TRADITIONAL	AUTHORITY
Tel: 065 - 225313		P/Bag x5514
Fax: 065 - 225313		Oshakati
		Uukwangula
Your Ref		
Our Ref.		

RECOMMENDATION LETTER

I, Iipumbu H. Iipumbu, Chief of Uukwambi Traditional Authority hereby testify that Uukwambi Traditional Authority has given Power Com a portion of land in Uuvudhiya Village to erect a Tour in order to deliver service to the community around the village.

The Uukwambi Traditional Authority does not have any objection to the allocation of the piece of land to the Company in question.

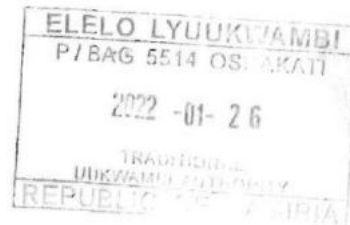
Yours Truly

Signature: P.P. 

Name: Iipumbu H. Iipumbu

King/ Chief/ Chairperson/ TA Councillor/ Secretary

Date: 26-01-2022



All correspondence should be address to the Chief of Uukwambi Traditional Authority

Appendix D:

EIA Team Resumes

- 1. Mr. Tendai E. Kasinganeti**
- 2. Ms. Shiwayu Kristian NN**

Curriculum Vitae (CV) for Tendai. Kasinganeti

1. **Proposed Position:** Environmental Assessment Practitioner
2. **Name of Firm** D&P Engineers and Environmental consultants
3. **Name of Staff** Evidence Tendai Kasinganeti
4. **Date of Birth:** 27 November 1991 **Nationality:** Zimbabwean
5. **Education:**

Name of University or institution, location, dates attended (year from – year to)	Degree(s)/diploma(s) obtained
Midlands State University, Zimbabwe (11/12/2011 – 05/2015)	BSc Hons. Geography and Environmental Science Thesis „Spatial and temporal analysis of base transceiver stations development and associated environmental impacts (Zimbabwe)
National University of Science and Technology 2018-2020 (Ongoing)	Master of Geoinformation Science and Earth Observation (Natural Resources Management)

6. **Membership of Professional Associations:**
 - Environmental Assessment Professionals of Namibia (EAPAN)
 - International Association for Impact Assessment (IAIA)

7. Other Training:

Further education:

- Certificate on Going Green for Social Entrepreneurs (Young African Leaders Initiative Network, USA, 2016)
- Fundamentals of Health and Safety in the Workplace (Allison International, Ireland, 2016)
- Introduction to Ecosystem Service Valuation and Policy Design (RESMOB Namibia, 2018)

8. Countries of Work Experience:

- Namibia
- Zimbabwe
- Mozambique

9. Languages:

Language	Reading	Speaking	Writing
English	excellent	excellent	Excellent

10. Employment Record:

Employment record relevant to the assignment:		
Period	Employing organization and your title/position. Contact info for references	Summary of activities performed relevant to the Assignment

CURRICULUM VITAE Tendai E. Kasinganeti (Environmental Expert (Backstopper))

April 2018 to date	<p>Environmental Practitioner and Consultant</p> <p>Mr. Timo David Director: Project Management D&P Engineers and Environmental Consultants E: tdavid@dpe.com.na</p>	<ul style="list-style-type: none"> ▪ GIS mapping and Environmental Sensitivity mapping. ▪ Providing professional consulting services to clients in Namibia with focus on EIAs, EMPs reporting and compliance advisory. ▪ Conducting Environmental Scoping Assessments and Environmental Management Plans ▪ Application for Environmental Clearance Certificates ▪ Environmental Control for projects during construction and operation. ▪ Environmental Quarterly and Biannual reporting ▪ Environmental monitoring and compliance auditing.
January 2016 to April 2018	<p>Environmental Planner</p> <p>Mr. Henry Krohne Director-Plan Africa Consulting E: pafrica@mweb.com.na</p>	<ul style="list-style-type: none"> ▪ Coordinating and managing Environmental Impact Assessment Studies: ▪ Environmental Reports writing. ▪ Conducting Bio-Physical studies. ▪ Stakeholder engagement and consultation ▪ Environmental Monitoring and Auditing ▪ Land use Mapping and GIS
July 2013 to December 2015	<p>-Student intern -Junior Environmental and Spatial Consultant</p> <p>Mr. Anesu Mudiwa Director: NWAS Environmental Consulting E: anesu@nwas.co.zw W: www.nwas.co.zw</p>	<ul style="list-style-type: none"> ▪ Occupational Health, Safety and Environmental Management ▪ Baseline surveys for EIA projects (Social, ecological, economic and political impact Assessment) ▪ Compiling Environmental and Social Impact Assessment Reports for different projects ▪ Public and Stakeholder consultation ▪ Environmental Compliance Auditing and Quarterly Reports ▪ Soil and water samples processing (Sample collecting, sending for lab tests and interpretation of results) ▪ Emissions testing

<p>11. Detailed Tasks Assigned</p> <ul style="list-style-type: none"> • Stakeholders Engagement • Legislative Frameworks Review • Environmental Compliance Manual and Guidelines Development • Team Leader Backstopper 	<p>12. Work Undertaken that Best Illustrates Capability to Handle the Tasks Assigned</p> <p><i>[Among the assignments in which the staff has been involved, indicate the following information for those assignments that best illustrate staff capability to handle the tasks listed under point 11.]</i></p> <p>Name of assignment or project: Environmental Management Plans development</p> <p>Year: 2017/18</p> <p>Location: Namibia (All Regions) -56 Fuel Retail facilities</p> <p>Client: Engen Namibia/ Nam-Geo Enviro Solutions</p> <p>Main project features:</p> <ul style="list-style-type: none"> • EHS Auditing • Environmental Management Plans Development • Application for Environmental Clearance Certificates for service stations (New application/ Renewals) • Develop EHS monitoring and compliance schedule • Conduct site risk assessment and recommend corrective action plan <hr/> <p>Name of assignment or project: Namibia Water Support Programme</p>
---	---

CURRICULUM VITAE **Tendai E. Kasinganeti** (*Environmental Expert (Backstopper)*)

	<p>Year: 2019</p> <p>Location: Namibia (All Regions)</p> <p>Client: Ministry of Agriculture Water and Forestry/ African Development Bank</p> <p>Main project features:</p> <ul style="list-style-type: none"> • Strategic Environmental and Social Assessment/ Strategic Environmental and Social Management Framework • Environmental Compliance Guidelines for implementing the Namibia Water Sector Support Programme <p>Positions held: Environmental and Social Assessment Expert_</p> <p>Activities performed:</p> <ul style="list-style-type: none"> • Stakeholders Consultation • Regional Workshops • Baseline Environmental Scoping Assessment • Institutional Capability and Needs Assessment for Environmental Compliance • Strategic Environmental and Social Assessment Development (SESA) • Strategic Environmental and Social Management Framework (ESMF) • ESMF Workshop and Compliance Training
	<p>Name of assignment or project: Etunda Feedlot</p> <p>Year: 2019</p> <p>Location: Etunda, Omusati Region-Namibia</p> <p>Client: Ministry of Agriculture Water and Forestry/ European Union</p> <p>Main project features:</p> <ul style="list-style-type: none"> • Environmental and Social Impact Assessment (ESIA)/ Environmental and Social Management Plan (ESMP) <p>Positions held: Environmental and Social Assessment Expert_</p> <p>Activities performed:</p> <ul style="list-style-type: none"> • Environmental Scoping Assessment • National, Regional and International Legal Frameworks Review • Public and Stakeholders Consultation • Groundwater Impact Assessment • Sensitivity Mapping • Environmental and Social Management Plan Development
	<p>Name of assignment or project: Le'Monte Village Development (Township Establishment and Incorporation)</p> <p>Year: 2018</p> <p>Location: Grootfontein, Otjozondjupa Region-Namibia</p> <p>Client: Singleton Commercial Pty Ltd</p>

CURRICULUM VITAE **Tendai E. Kasinganeti** (*Environmental Expert (Backstopper)*)

	<p>Main project features:</p> <ul style="list-style-type: none"> • Environmental and Social Impact Assessment (ESIA)/ Environmental and Social Management Plan (ESMP) <p>Positions held: Environmental and Social Assessment Expert_</p> <p>Activities performed:</p> <ul style="list-style-type: none"> • Environmental Scoping Assessment • National, Regional and International Legal Frameworks Review • Public and Stakeholders Consultation • Groundwater Impact Assessment • Sensitivity Mapping • Environmental and Social Management Plan Development
--	---

ADDITIONAL PROJECTS EXPERIENCES

Client, Year and Country	Project Name and Deliverable
GIZ and Ministry of Agriculture Water and Land Reform, 200-21-Namibia	Flexible Land Tenure System: Environmental and Social Management and Compliance Guideline Manual for the Flexible Land Tenure Implementation
Centre for Natural Resources Governance, 2020-21- Zimbabwe and Zambia	Coal mining and thermal power generation in Sengwa-Kariba areas Zimbabwe: Environmental and Social Impact Assessment-Focus on Environmental Rights and Gender impacts
European Union and Ministry of Agriculture, Water and Forestry, 2020-Namibia	Program to improve livestock efficiency and marketability in the Northern Communal Areas (NCAs) of Namibia: Various Environmental and Social Impact Assessments for specific projects
UNDP Namibia and Ministry of Mines and Energy, 2020-Namibia	Supporting livelihoods through small-scale mining of semi-precious stones, metals and minerals: Environmental, Health, Safety and Social Guidelines for Small Scale Miners in Namibia
AfDB and Ministry of Agriculture, Water and Forestry, 2019-Namibia	Namibia Water Sector Support Programme: Strategic Environmental and Social Assessment and Environmental and Social Management Framework
Keetmanshoop Medical Practice, 2018-Namibia	Keetmanshoop Private Hospital: Environmental and Social Impact Assessment.
Anpro Hides and Skins, 2018-Namibia	Anpro animal rendering plant and tannery: Environmental Impact Assessment

13. Certification:

I, the undersigned, certify that to the best of my knowledge and belief, this CV correctly describes myself, my qualifications, and my experience. I understand that any wilful misstatement described herein may lead to my disqualification or dismissal, if engaged.



_____ Date: 19-May-21
[Signature of staff member or authorized representative of the staff] *Day/Month/Year*

Full name of authorized representative: Evidence Tendai Kasinganeti

KRISTIAN NDIIPANDA NDEKUPANDA SHIWAYU
ENVIRONMENTAL SCIENTIST
KRISTIAN SHIWAYU | LINKEDIN
LICENSE: LEARNER'S LICENSE

Name of Expert:	Shiwayu Kristian NN
Date of Birth:	03/01/1993
Country of Citizenship/Residence	Namibian Residence

1. Education:

ACADEMIC QUALIFICATIONS		
Name of Course	Institution	Year conferred
International General Certificate in Occupational Health and Safety Practice	NEBOSH	Ongoing
BSc Hons. Integrated Environmental Science	University of Namibia	2019
Master of Science in Integrated Environmental Science and Sustainable Development	The International University of Management	Ongoing

3. Employment Record:

Period	Employing organization and your title/position. Contact info for references	Country	Summary of activities performed relevant to the Assignment
Sept 2022 to date	<p>-Intern: Environmental & Sustainability Consultant</p> <p>Mr. Timo David</p> <p>Director: Project Management</p> <p>D&P Engineers and Environmental Consultants</p> <p>E: tdavid@dpe.com.na</p>	Namibia	<ul style="list-style-type: none"> ▪ Providing professional consulting services to clients in Namibia with focus on EIAs, EMPs reporting and compliance advisory. ▪ Conducting Environmental Scoping Assessments and Environmental Management Plans ▪ Application for Environmental Clearance Certificates

Jan 2021 to May 2022	<p>-Student Employment: Centre for Environmental Studies</p> <p>Mr Sioni Iikela</p> <p>Director: CES, IUM</p> <p>E: s.iikela@ium.edu.na</p> <p>W: 061 433 6412</p>	Namibia	<ul style="list-style-type: none"> ▪ Customer Service ▪ To assist the Centre director, and lecturing staff with all related functions and relevant logistical matters. ▪ Administrative functions ▪ Research
Oct 2020 to Jan 2021	<p>-Graduate Intern: Wildlife and National Parks Division</p> <p>Mr. J Amutenya</p> <p>Chief Warden (Central)</p> <p>Ministry of Environmental, forestry & Tourism (Windhoek)</p> <p>E: jeremia.amutenya@gmail.com</p> <p>W: +26481 0415182</p>	Namibia	<ul style="list-style-type: none"> ▪ Office administrative functions ▪ Law enforcement ▪ Human Wildlife Management ▪ CBNRM (Community Based Natural Resource Management) ▪ Research and Monitoring ▪ Ensure the sustainable utilization of wildlife within central areas of Namibia.
July 2020 to Sept 2020	<p>-Researcher</p> <p>Namibia Research Institution (Gobabeb)</p>	Namibia	<ul style="list-style-type: none"> ▪ Data processing and analyses ▪ Survey techniques ▪ Scientific presentations, while emphasizing teamwork ▪ Critical thinking ▪ Problem-solving skills
Aug 2019 to Sept 2019	<p>-Researcher/Enumerator</p> <p>Namibia agricultural Mechanisation and Seed Improvement Project (NAMSIP)</p>	Namibia	<ul style="list-style-type: none"> ▪ Interviewed farmers in Oshikoto Region ▪ Data collection ▪ Enter data collection in Microsoft Excel for data analyses.
Dec 2017 to Jan 2018	<p>-Field Attachment: Wildlife and National Parks Division</p> <p>Ministry of Environmental, forestry & Tourism (Windhoek)</p>	Namibia	<ul style="list-style-type: none"> ▪ Office administrative functions ▪ Law enforcement ▪ Human Wildlife Management ▪ CBNRM (Community Based Natural Resource Management) ▪ Research and Monitoring ▪ Ensure the sustainable utilization of wildlife within central areas of Namibia.
Dec 2016 to Jan 2017	<p>-Field Attachment: Environmental Officer</p> <p>Tschudi Copper Mine</p>	Namibia	<ul style="list-style-type: none"> ▪ Administration functions ▪ Conducted air quality monitoring ▪ Environmental inspection ▪ Data capturing ▪ Minute taking at the interested and affected parties.

4. Membership of Professional Associations:

- Recycle Namibia Forum

5. Countries of Work Experience: Namibia (SADC Region)

6. Languages:

	<u>Speaking</u>	<u>Reading</u>	<u>Writing</u>
English	Good	Good	Good

7. Projects Conducted

Tasks Assigned	Work Undertaken
Biodiversity Report	<p>Name of Assignment or Project: Biodiversity Report for Namibia Uranium (PTY) LTD, EPL 7297.</p> <p>Year: 2021</p> <p>Location: Erongo Region</p> <p>Client: Uranium (PTY) LTD</p> <p>Main project features: Environmental and Biodiversity Impact Assessment</p> <p>Position Held: Biodiversity Specialist</p> <p>Activities performed: Biodiversity Assessment.</p>
D1-Inception Report & Workplan D2-Scoping Report D3-DESIA & ESMP Report D4-ECC Application	<p>Name of Assignment or Project: Biodiversity report for the proposed Erongo substation and associate infrastructure in Karibib Erongo Region, Namibia.</p> <p>Year: 2021</p> <p>Location: Karibib Erongo Region</p> <p>Client: Nampower</p> <p>Main project features: Environmental and Biodiversity Impact Assessment</p> <p>Position Held: Biodiversity Specialist</p> <p>Activities performed: Biodiversity Assessment.</p>

Tasks Assigned	Work Undertaken
D1-Inception Report & Workplan D2-Scoping Report D3-DESIA & ESMP Report D4-ECC Application	<p>Name of Assignment or Project: The Proposed Construction And Operation Of 22 Telecommunication Base Transceiver Station (Bts) Towers Countrywide-Namibia.</p> <p>Year: 2022</p> <p>Location: Country-wide</p> <p>Client: POWERCOM</p> <p>Main project features: Environmental and Social Impact Assessment and Environmental and Social Management Plan.</p> <p>Position Held: Environmentalist</p> <p>Activities performed: Environmental Impact Assessment, Environmental Management plan, Public and Stakeholders Consultation, Reports Drafting and Client liaison</p>