

**Locality Map: Shows the 40 Hectares (Ha) Site for the Proposed 40MW Solar Park at Gibeon, Hardap Region**

Shows the priority site and area extent (40 Ha) in proximity to other key infrastructure i.e. Gibeon Village CBD, 33 kV Powerline and complementary sub-station, and the access road (D1089)

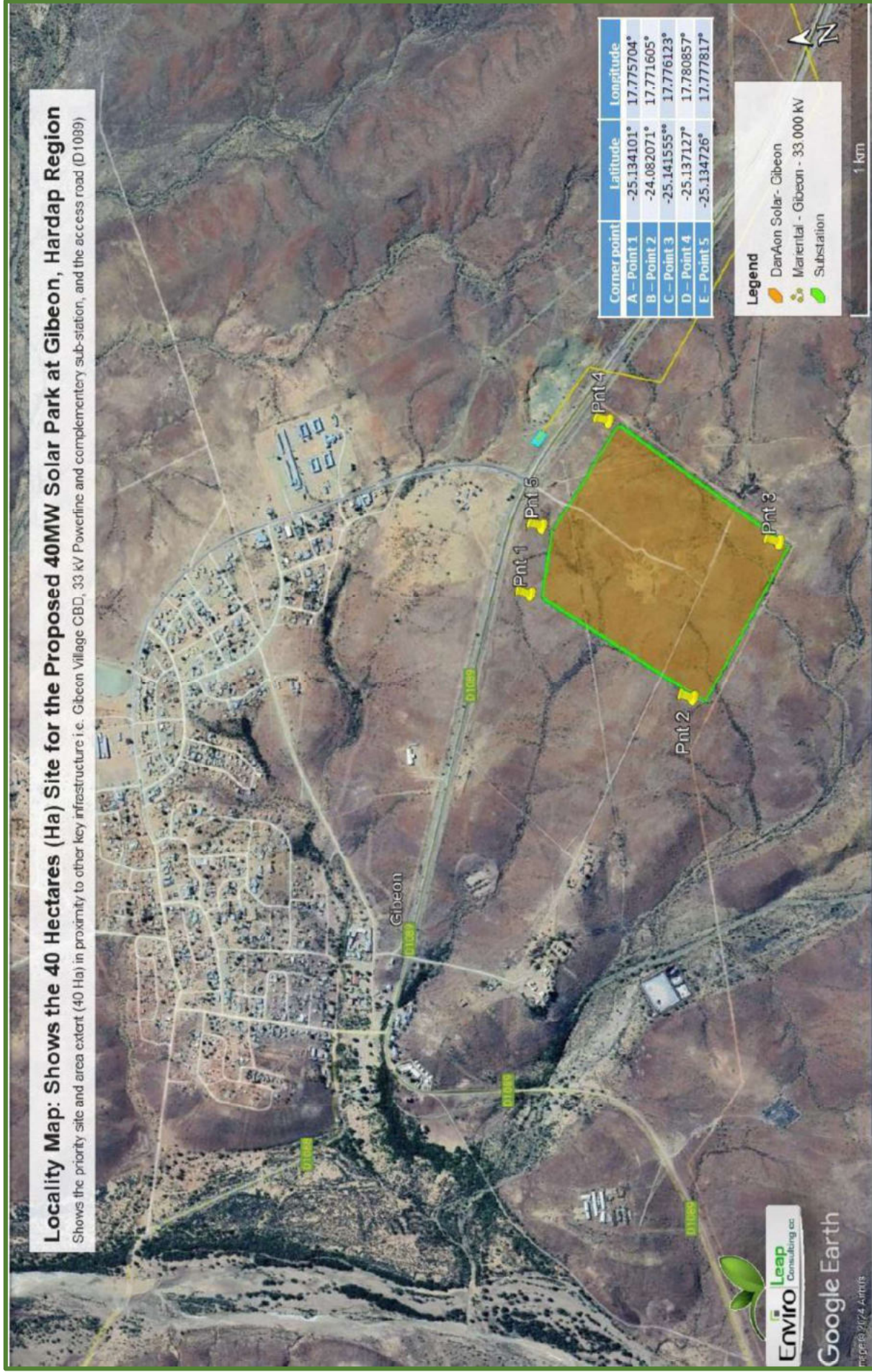


Figure 4: Shows the location and extent (40 Hectares) of the proposed DanAon PV Solar Park at Gibeon, Hardap Region