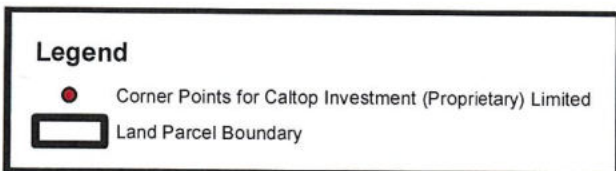
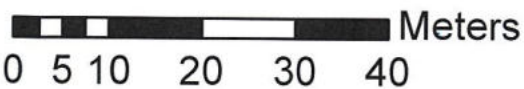
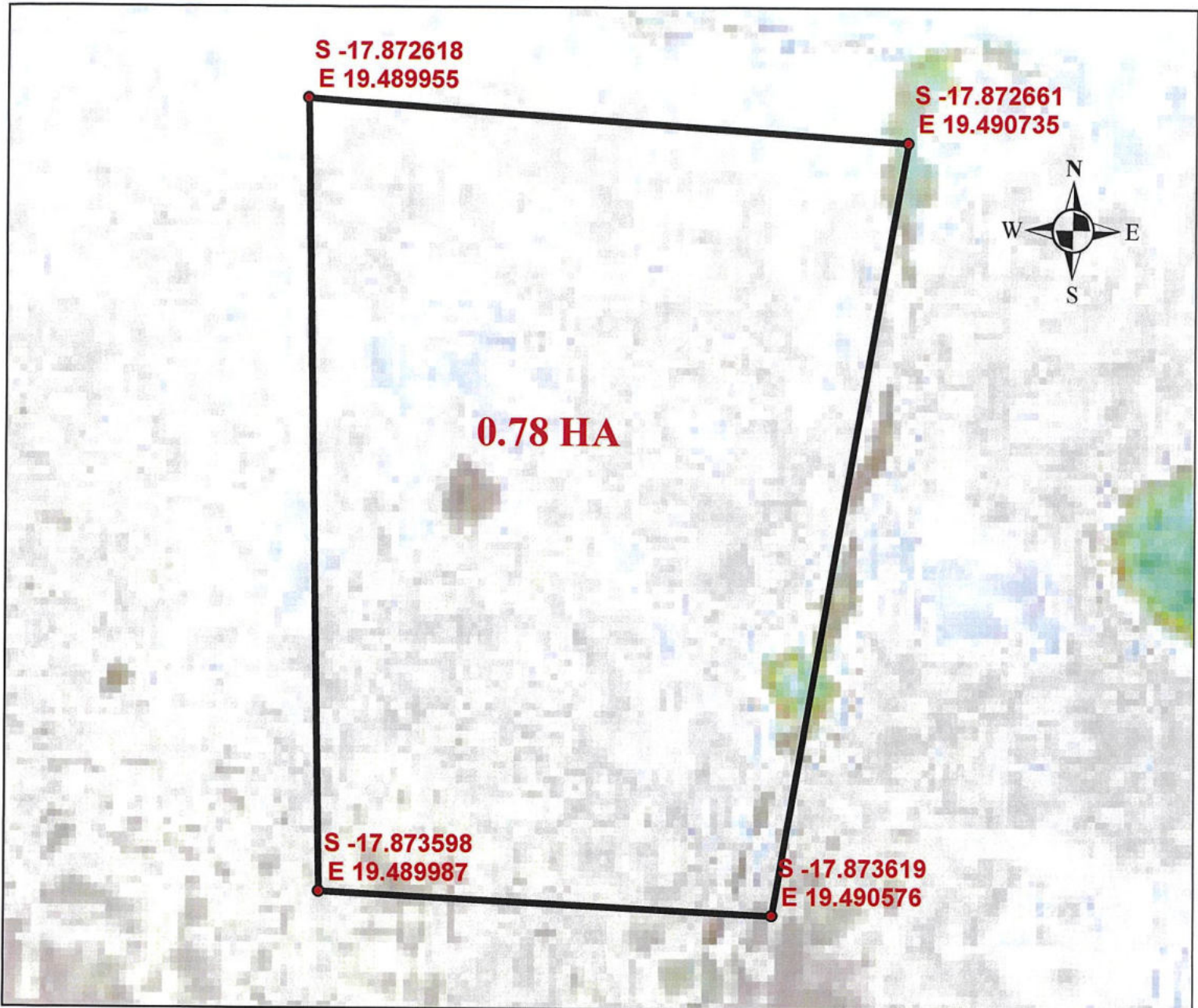




<p>Title: Locality Map for Caltop Investment (Pty) LTD Including Road and River</p>	<p>Drawing NO: LOC/SUB/GCAMADE Date: 2022-08-20 SCALE: NTS</p>	<p>DATA SOURCE: GOOGLE EARTH URL: https://earth.google.com/web/search/kavango+east/@-17.87261751,19.48999287</p>	<p>CONSULTANT: HEH URBAN NEST CREATIONS NO. 77 SIXTH STREET, WALVIS BAY P. O. BOX 4453 TEL: +264 64 220275 EMAIL: info@urbannest-na.com</p> 
---	--	---	--

Sketch Map For Caltop Investment (Proprietary) Limited

Mbunza TA



Published: 13 December 2021

Cartography: Protasius Someno

Projection: New Namibian Transverse Mercator

Map Units: Meter

Datum: WGS84

Data Source: 1. GPS Use

2. Accuracy level: 5-10 Meters



Ministry of Agriculture, Water & Land Reform

Regional Office, Rundu

P.O BOX 723, Rundu, Tel. (066) 255401



TITLE:

LOCALITY MAP FOR CALTOP INVESTMENT (PTY) LTD MIBUNZA TA

DRAWING NO: LOC/RUNDU
 DATE: 1/6/2022
 SCALE: NTS



URBAN NEST
 CONSULTANTS

