

PROPOSED DEVELOPMENT AND OPERATION OF A CAMPSITE AT FARM ARBEIT ADELT AND OPERATION OF SOSSUSVLEI SHUTTLE SERVICES AT NAMIB NAUKLUFT NATIONAL PARK IN MALTAHOHE DISTRICT IN HARDDAP REGION, NAMIBIA

PROPONENT: ABOUT ADELT SOSSUSVLEI CONCESSION MANAGEMENT (PTY) LTD

ENVIRONMENTAL IMPACT ASSESSMENT-MAY 2024

INTRODUCTION

About Adelt Sossusvlei Concession, management (Pty) Ltd was awarded the exclusive right to develop and manage a campsite at Farm Adelt located in Solitaire area, and operation of Sossusvlei shuttle services at Namib Naukluft national park. The proposed developed includes conducting hiking trails, develop and operation of a kiosk.

In this respect Junior Baiano Industrial Consultants (JBIC) cc have been appointed to carry out an Environmental Assessment study to obtain an environmental clearance certificate as per the requirements of the Ministry of Environment, Forestry and Tourism in terms of infrastructure development.

The study will incorporate biophysical, ecological and socio-economic baseline investigations relating to the proposed project.

In terms of the Namibian environmental Impact Assessment Regulations of 2012, an Environmental Clearance Certificate is to be obtained before the project can proceed.

This is because under the Government Notice 29 of 2008, Section 6 **TOURISM DEVELOPMENT ACTIVITIES** that states:

6. The construction of resorts, lodges, hotels or other tourism and hospitality facilities.

AIMS & OBJECTIVES OF THIS EIA PROCESS

The aims of this EIA:

- To comply with Namibia's Environmental Assessment Policy, Environmental Management Act (No. 7 of 2007) with its 2012 EIA Regulations and;
- Consult all interested and affected parties such as local residents, town council and regional council to ensure that their inputs are taken into account;
- To assess the significance of issues and concerns raised;
- Review the legal and policy framework and its relevance to this project;
- Describe general and socio-economic environment of the project to determine impacts and suitability to the project site.
- Identify and assess impacts related to the continued operations.
- Compile an Assessment Report and Management Plan (EMP) which includes recommendations and methods to minimize the identified negative environmental impacts of the proposed project.
- To identify existing environmental conditions and associated environmental sensitivities within and adjacent to the project area that may potentially be affected, i.e. Environmental sensitivity and monitoring procedures.

THE PUBLIC PARTICIPATION PROCESS

The Public Participation Process (PPP) is an integral part of the EIA process whereby it allows the public to obtain information about the proposed project, to view documentation, to provide input and voice any concerns concerning the project. The Public Participation Processes that will be undertaken will include consultation with the local authority, line ministries, government extension offices, owners of neighboring properties and other I&AP's living around the proposed area.

During the meeting participants will be availed an opportunity to comment, ask questions and raise any concerns be it environmental or social regarding the proposed project. Comments will be recorded and considered in the Environmental Assessment report that will be submitted to the Ministry of Environment for review

PROJECT DESCRIPTION

The proponent was awarded the exclusive right to develop, manage and operate a campsite at Farm Arbeit Adelt and operation of Sossusvlei shuttle services at Namib Naukluft National Park. The develop includes the necessary support infrastructure.

A. Farm Arbeit Adelt:

1. Campsite
2. Upgrade and renovation of the existing farm house to the reception area, mini shop
3. Manager accommodation, Lounge and dining area
4. Hiking trails

B. Sossusvlei Shuttle services

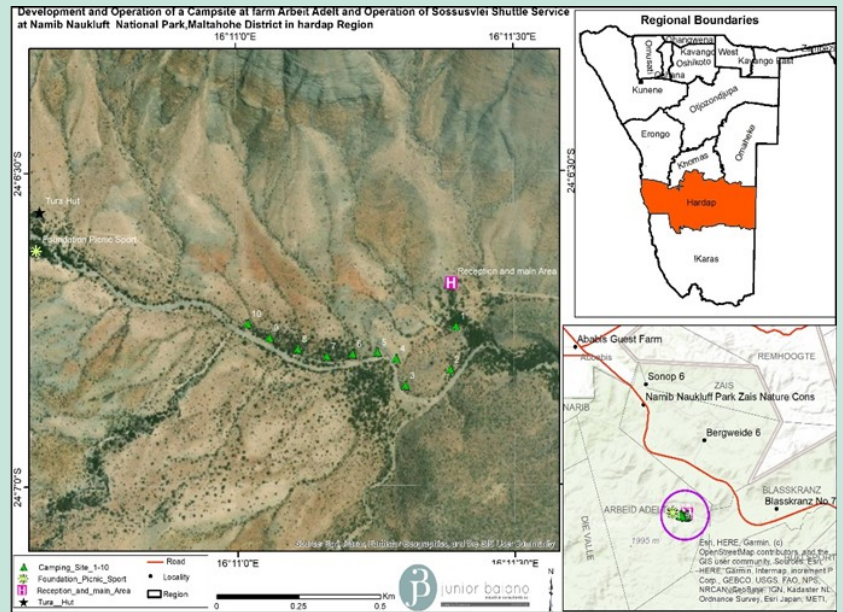
1. Procurement of new vehicles
Develop kiosk and information centre
2. Ablution facilities, Parking lot, kiosk

The operations will ensure compliance to all necessary statutory requirements

PROJECT LOCATION

The project site is located at Farm Arbeit Adelt, Solitaire are, Maltahohe district, Hardap region

Figure1: Site Locality table



ANTICIPATED PROJECT IMPACTS

Potential Impacts	Assessment to be Undertaken
Negative Impacts	
Land use Change (Aesthetic value)	baseline assessment
Impacts on fauna and Flora	JBIC EIA Team baseline assessment and If there is need for specialist Assessment, the consultation process will Inform.
Impacts on surface and groundwater resources	JBIC EIA Team baseline assessment
Health and Safety hazards	JBIC EIA Team baseline assessment
Cumulative impacts of the project Operation	JBIC EIA Team baseline assessment
Positive Impacts	
Revenue generation	JBIC EIA Team baseline assessment
Enhance Tourism activities and tourists	JBIC EIA Team baseline assessment
Employment creation	JBIC EIA Team baseline assessment

HOW TO PARTICIPATE?

This Public Consultation process forms an important component of the Environmental Assessment process. It is defined in the EIA Regulations (2012), as a “process in which potential interested and affected parties are given an opportunity to comment on, or raise issues relevant to, specific matters” (S1).

You can participate through the following:

- Responding to the newspaper adverts for public meeting, availability of scoping report and decision made by MET.
- **A public meeting will be held on Tuesday, 21st of May 2024 at Rockstock Ritz Desert Lodge, at 13h00.**

OUR CONTACT DETAILS.....

You can send all your comments and enquiries to the following:

Mr. Nghiyolwa, Fredrich
Tel: +264 (0) 81 147 2029
Email: JuniorB200581@gmail.com



Registration and Comments Form

**PROPOSED DEVELOPMENT AND OPERATION OF A CAMPSITE AT FARM ARBEIT
ADELT AND OPERATION OF SOSSUSVLEI SHUTTLE SERVICES AT NAMIB NAUKLUFT
NATIONAL PARK, MALTAHOHE DISTRICT, HARDAP REGION, NAMIBIA**

KINDLY COMPLETE THIS FORM IN DETAIL AND RETURN TO:

Junior Baiano Industrial Consultants cc
PO Box 23537
Windhoek
Tel: 061 219 773
Cell: 0811472029
Email Address: JuniorB200581@gmail.com

Personal Details

Name & Surname.....
Postal Address..... Email
Town.....

What is your main area of interest regarding the proposed development?
.....
.....
.....
.....
.....

Do you have any points of concern or support regarding the proposed project? If "yes", please briefly list these in point format:

YES / NO

.....
.....
.....
.....
.....

Should this project go ahead? If no please specify reasons below:

YES / NO

.....
.....
.....
.....