

1 PROJECT LOCATION

The brick manufacturing project will be established at Omundaungilo Community Forest, GPS coordinates -17.449859° S, 16.698448° E on a two (2) hectares (Ha) piece of land in Omundaungilo Constituency of Ohangwena Region at about 2.7 kilometres from Omundaungilo Settlement (**Figure 1**). The land parcel is allocated to the Omundaungilo Community Forest by the Traditional Authority.

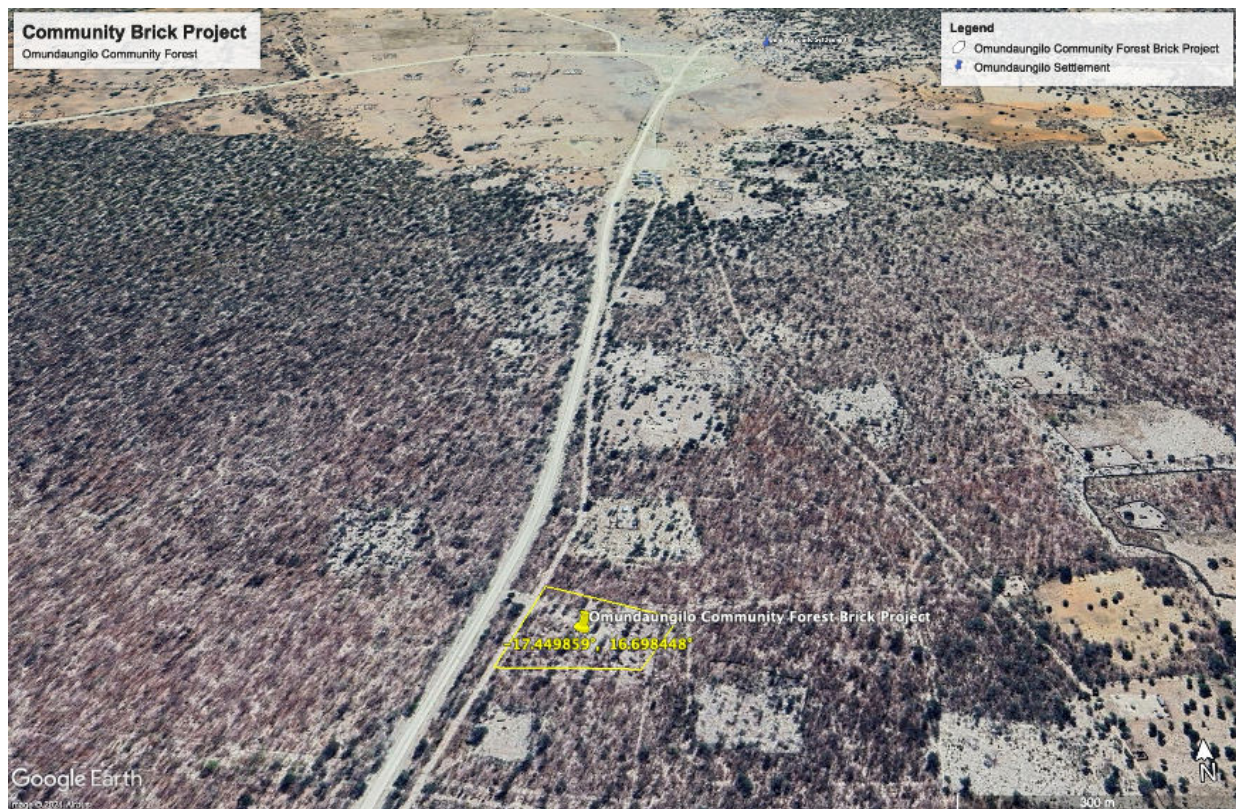


Figure 1. Project Locality