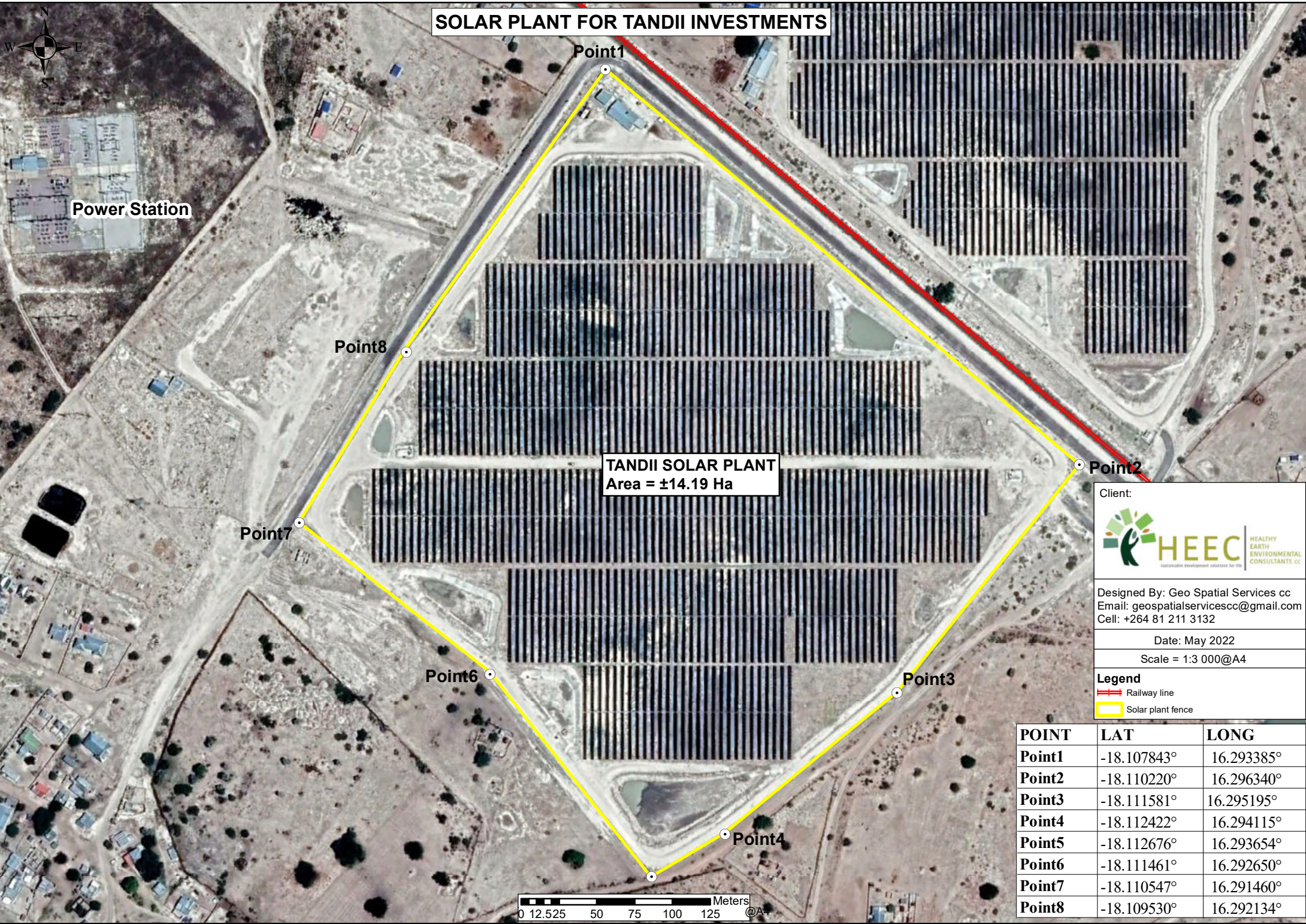


# SOLAR PLANT FOR TANDII INVESTMENTS



Power Station

Point1

Point8

Point7

Point6

Point4

Point3

Point2

TANDII SOLAR PLANT  
Area = ±14.19 Ha

Client:

HEEC  
HEALTHY EARTH ENVIRONMENTAL CONSULTANTS CC  
Sustainable development solutions for life

Designed By: Geo Spatial Services cc  
Email: [geospatialservicescc@gmail.com](mailto:geospatialservicescc@gmail.com)  
Cell: +264 81 211 3132

Date: May 2022  
Scale = 1:3 000@A4

**Legend**

- Railway line
- Solar plant fence

| POINT  | LAT         | LONG       |
|--------|-------------|------------|
| Point1 | -18.107843° | 16.293385° |
| Point2 | -18.110220° | 16.296340° |
| Point3 | -18.111581° | 16.295195° |
| Point4 | -18.112422° | 16.294115° |
| Point5 | -18.112676° | 16.293654° |
| Point6 | -18.111461° | 16.292650° |
| Point7 | -18.110547° | 16.291460° |
| Point8 | -18.109530° | 16.292134° |

