

## **PROJECT LOCATION**

The mining claims 72445 and 72446 are situated at Oundombo Village approximately 60 Km South of Opuwo when using the D3705 which branch out from the C43 road from Opuwo to Sesfontein as shown in **Figure 1**. The mining claim 72445 covers an area of 18.0104 Ha while mining claim 72446 covers an area of 17.5127 Ha.



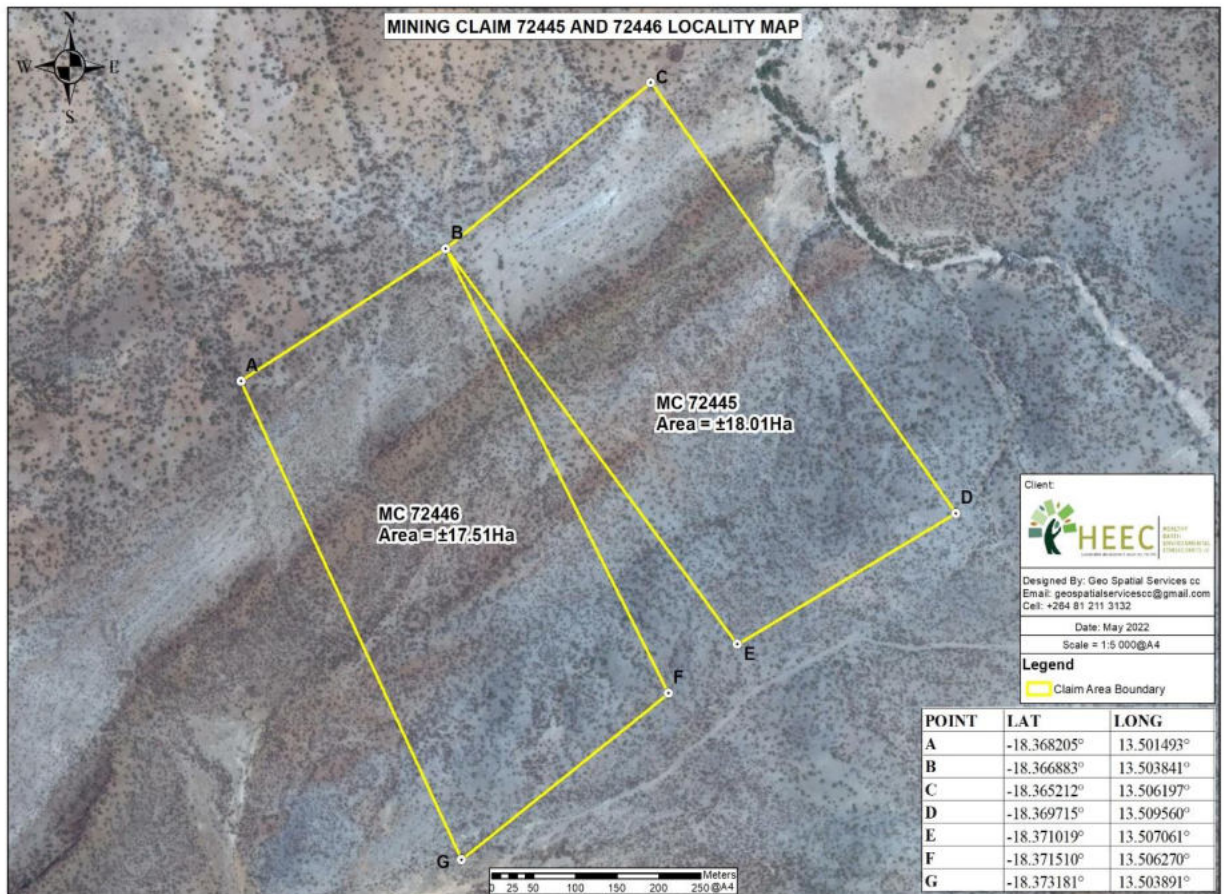


Figure 2: The geo-physical location of mining claims; 72445 and 72446 at Oundombo Village, Opuwo Rural Constituency, Kunene Region (Shown by the yellow quadrants) covering a total area of 35.52 Ha (HEEC, 2022).