

**INTERESTED AND AFFECTED PARTIES LIST - BIGENKUUMBA PORT SERVICES**

	<b>Name</b>	<b>Organisation</b>	<b>E-Mail</b>	<b>Telephone/mobile</b>
1	Dr Anja Kreiner	National Information and Research Center: Subdivision Environment	<a href="mailto:akreiner@mfmr.gov.na">akreiner@mfmr.gov.na</a> ; <a href="mailto:a_kreiner_2000@yahoo.com">a_kreiner_2000@yahoo.com</a>	064-404385
2	Fessor Mbango	Erongo Red - CEO	<a href="mailto:fmbango@erongored.com.na">fmbango@erongored.com.na</a>	064 - 201 9000
3	Mr Rudolf Eiseb	Erongo Red	<a href="mailto:rouseb@erongored.com.na">rouseb@erongored.com.na</a>	064 - 217600
4	Peter Bridgeford,	Coastal Environmental Trust of Namibia.	<a href="mailto:pmbridge@iway.na">pmbridge@iway.na</a>	081 260 7375
5	Ms LH Doeses	Erongo Regional Council - CRO	<a href="mailto:cro@erongorc.gov.na">cro@erongorc.gov.na</a>	064 - 410 5729
6	Deriou Benson	Walvis Bay Urban Constituency Councillor	<a href="mailto:dbenson@erongorc.gov.na">dbenson@erongorc.gov.na</a>	064 - 200763
7	Trevino Forbes	Walvis Bay - Mayor	<a href="mailto:mayorsec@walvisbaycc.org.na">mayorsec@walvisbaycc.org.na</a>	064 - 201 3268
8	Andrew Kanime	Namport - CEO	<a href="mailto:a.kanime@namport.com.na">a.kanime@namport.com.na</a>	064 208 2111
9	Muronga Haingura	Walvis Bay Municipality - CEO	<a href="mailto:mhaingura@walvisbaycc.org.na">mhaingura@walvisbaycc.org.na</a>	064 201 3201
10	Andre Burger	Walvis Bay Municipality - Engineer	<a href="mailto:aburger@walvisbaycc.org.na">aburger@walvisbaycc.org.na</a>	064 - 201 3111
11	David Uushona	Walvis Bay Municipality - Environment Manager	<a href="mailto:duushona@walvisbaycc.org.na">duushona@walvisbaycc.org.na</a>	064-214304
12	Susan Roux	CETN	<a href="mailto:cetn@iafrica.com.na">cetn@iafrica.com.na</a>	0811294995
13	H Hitula	Walvis Bay Municipality - Town Planner	<a href="mailto:hhitula@walvisbaycc.org.na">hhitula@walvisbaycc.org.na</a>	064-2013339
14	Ephraim Nambahu	Walvis Bay Town Council - Town Planner	<a href="mailto:enambahu@walvisbaycc.org.na">enambahu@walvisbaycc.org.na</a>	064 - 2013111

15	Jack Manale	Walvis Bay Municipality - Manager: Housing	<a href="mailto:JManale@walvisbaycc.org.na">JManale@walvisbaycc.org.na</a>	064 - 201 3111
16	Jamie-Lee Lawrence	Walvis Bay Municipality	<a href="mailto:JLawrence@walvisbaycc.org.na">JLawrence@walvisbaycc.org.na</a>	064 - 201 3111
17	Durith Tjarokua	Walvis Bay Municipality	<a href="mailto:DTjarokua@walvisbaycc.org.na">DTjarokua@walvisbaycc.org.na</a>	064 - 201 3111
18	Lovisa Hailaula	Walvis Bay Municipality - Environmental Officer	<a href="mailto:LHailaula@walvisbaycc.org.na">LHailaula@walvisbaycc.org.na</a>	064 - 201 3111
19	Nangula Amutenya	Walvis Bay Municipality - Environmental Coordinator	<a href="mailto:NAmutenya@walvisbaycc.org.na">NAmutenya@walvisbaycc.org.na</a>	064 - 201 3111
21	Elzevir Gelderbloem	Namport - Port Engineer	<a href="mailto:elzevir@namport.com.na">elzevir@namport.com.na</a>	064 208 2111
23	Timoteus Mufeti	Environmental Commisioner	<a href="mailto:Timoteus.Mufeti@met.gov.na">Timoteus.Mufeti@met.gov.na</a>	061 - 284 2701
26	Simeon Negumbo	MME PS	<a href="mailto:Johanna.Ambata@mme.gov.na">Johanna.Ambata@mme.gov.na</a>	061 284 8111
27	John Titus	MME - Director Energy	<a href="mailto:John.Titus@mme.gov.na">John.Titus@mme.gov.na</a>	061 284 8322
28	Percy W. Misika	MAWF - Executive Director	<a href="mailto:nehemiaa@mawf.gov.na">nehemiaa@mawf.gov.na</a>	061 20807111
29	M. Amakali	MAWF - Director of Water Resource Management	<a href="mailto:Maria.Amakali@mawf.gov.na">Maria.Amakali@mawf.gov.na</a> ; <a href="mailto:gwamakali@gmail.com">gwamakali@gmail.com</a>	061 208 7266
30	Cynthia Orthman	MAWF - Deputy Director of Water Environment	<a href="mailto:Cynthia.Ortmann@mawf.gov.na">Cynthia.Ortmann@mawf.gov.na</a>	061 208 7158
31	P. Mufeti	MAWF - Deputy Director of Hydrology	<a href="mailto:Paulina.Mufeti@mawf.gov.na">Paulina.Mufeti@mawf.gov.na</a>	061 205 7191
32	A Nehemia	CEO - Namwater	<a href="mailto:NehemiaA@namwater.com.na">NehemiaA@namwater.com.na</a>	061 71 0000
33	Willem Venter	NamWater - Senior Manager: Fixed Asset Management	<a href="mailto:venterw@namwater.com.na">venterw@namwater.com.na</a>	061 712 039
34	S Haulofu	MD - Nampower	<a href="mailto:simson.haulofu@nampower.com.na">simson.haulofu@nampower.com.na</a>	061 205 4111
35	Gert Fourie	Nampower - Engineering, Planning and Design	<a href="mailto:gert.fourie@nampower.com.na">gert.fourie@nampower.com.na</a>	061 205 4111
36	Elina Hamatwi- Lumbu	Roads Authority - Senior Specialist: Roads Legislations Compliance & Advise	<a href="mailto:lumbue@ra.org.na">lumbue@ra.org.na</a>	061 284 7427
37	Victor Miti Libuku	Ministry of Fisheries and Marine Resources - Biologist	<a href="mailto:Victor.Libuku@mfmr.gov.na">Victor.Libuku@mfmr.gov.na</a> ; <a href="mailto:Victor.Libuku@gmail.com">Victor.Libuku@gmail.com</a>	064 410 1000

38	Fillemon Aupokolo	Namwater - Environmentalist	<a href="mailto:AupokoloF@namwater.com.na">AupokoloF@namwater.com.na</a>	061 712 095
39	Dr Grant Muller	Nampower - Head: Generation Capital Projects	<a href="mailto:Grant.Muller@nampower.com">Grant.Muller@nampower.com</a>	061 205 2393

File Message Help Acrobat Tell me what you want to do

Ignore Delete Archive Reply Reply All Forward Meeting Move to: ? To Manager Rules Team Email Reply & Delete Move Actions Mark Unread Follow Up Translate Find Related Select Read Aloud Immersive Reader Zoom

Delete Respond Quick Steps Move Tags Editing Immersive Zoom

CP Colin P Namene <colin@environam.com> 'akreiner@mfmr.gov.na'; 'a\_kreiner\_2000@yahoo.com'; 'fmbango@erongored.com.na'; 'rouseb@erongored.com.na'; 'pmbridge@iway.na'; + 31 10:40 PM

**PROPOSED TERMINAL AT NAMPORT FOR STORAGE AND HANDLING OF INDUSTRIAL MINERALS, BASE AND RARE METALS, WALVIS BAY, ERONGO REGION.**

Bigenkuumba Port Services BID.pdf 517 KB

Open PDFs in Adobe Acrobat

Dear Potential Interested and Affected Party

Environam Consultants Trading is a wholly Namibian owned environmental management consultancy providing an array of environmental services to our clients including: Strategic Environmental Assessments; Environmental Assessments; Strategic Environmental Management Plans; Environmental Management Plans; Environmental Management Systems; Environmental Auditing, Monitoring and Evaluation; Solid Waste Management; and Project Management. Our daily activities are underpinned by excellent environmental outcomes aimed at achieving a symbiotic relationship between development and the environment.

We have been appointed to undertake the environmental assessment and apply for an environmental clearance certificate from the Environmental Commissioner for the project below:

**Proposed Terminal at Namport for Storage and Handling of Industrial Minerals, Base and Rare Metals, Walvis Bay, Erongo Region.**

Any activity entailing a scheduled process referred to in the Atmospheric Pollution Prevention Ordinance, 1976; The manufacturing, storage, handling or processing of a hazardous substance defined in the Hazardous Substances Ordinance, 1974; Any process or activity which requires a permit, licence or other form of authorisation, or the modification of or changes to existing facilities for any process or activity which requires an amendment of an existing permit, licence or authorisation or which requires a new permit, licence or authorisation in terms of a law governing the generation or release of emissions, pollution, effluent or waste; The bulk transportation of dangerous goods using pipeline, funiculars or conveyors with a throughout capacity of 50 tons or 50 cubic meters or more per day; and the storage and handling of a dangerous goods, including petrol, diesel, liquid petroleum gas or paraffin, in containers with a combined capacity of more than 30 cubic meters at any one location, are listed activities as per the List of Activities requiring Environmental Clearance (Government Notice 29 of 6 February 2012) and accordingly require an Environmental Impact Assessment (EIA) to be conducted.

In line with Regulation 21(2) of the mentioned EIA Regulations, a Background Information Document (BID) is distributed to pre-identified Interested and Affected Parties as part of the public consultation process for this Environmental Impact Assessment.

An Environmental assessment will be undertaken to determine the potential impact of the development on the environment and to determine all safety, health and social impacts associated with the proposed development activities.

Kindly provide us with any input by contacting us at Mobile: +264 81 458 4297, Fax: +264 61 258 470 or E-Mail: [colin@environam.com](mailto:colin@environam.com); P.O. Box 24056, Windhoek, on or before **12 November 2021**.

We look forward to hear from you soon. Please do not hesitate to contact us for any further information.

File Message Help Acrobat Tell me what you want to do

Ignore Delete Archive Reply Reply All Forward Meeting Move to: ? To Manager Team Email Reply & Delete Create New Move Actions Mark Unread Follow Up Translate Find Related Select Read Aloud Immersive Reader Zoom

CP Colin P Namene <colin@environam.com> 'akreiner@mfmr.gov.na'; 'a\_kreiner\_2000@yahoo.com'; 'fmbango@erongored.com.na'; 'rouseb@erongored.com.na'; 'pmbridge@iway.na'; + 31 10:40 PM

**PROPOSED TERMINAL AT NAMPORT FOR STORAGE AND HANDLING OF INDUSTRIAL MINERALS, BASE AND RARE METALS, WALVIS BAY, ERONGO REGION.**

Bigenkuumba Port Services BID.pdf 517 KB Open PDFs in Adobe Acrobat

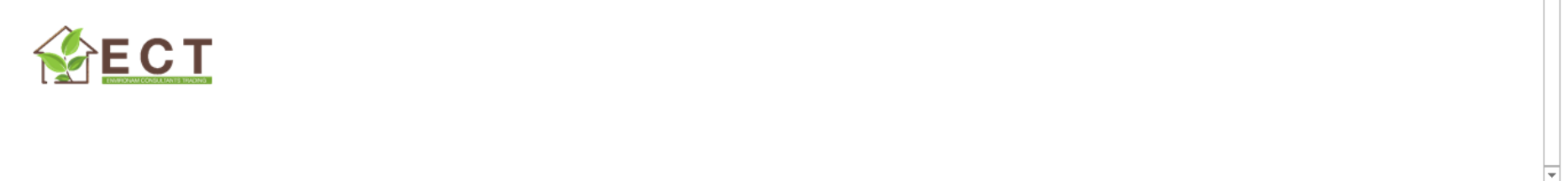
An Environmental assessment will be undertaken to determine the potential impact of the development on the environment and to determine on safety, health and social impacts associated with the proposed development activities.

Kindly provide us with any input by contacting us at Mobile: +264 81 458 4297, Fax: +264 61 258 470 or E-Mail: [colin@environam.com](mailto:colin@environam.com); P.O. Box 24056, Windhoek, on or before **12 November 2021**.

We look forward to hear from you soon. Please do not hesitate to contact us for any further information.

**Regards,**

**Colin P Namene**  
Managing Director: Environam Consultants Trading  
Phone +264 61 258 394 Mobile +264 81 458 4297  
Email [colin@environam.com](mailto:colin@environam.com)  
14 Barleo Park, Kudugas Street, Northern Industry, Windhoek



FW: PROPOSED TERMINAL AT NAMPORT FOR STORAGE AND HANDLING OF INDUSTRIAL MINERALS, BASE AND RARE METALS, WALVIS BAY, ERONGO REGION. - Message (HTML)

File Message Help Acrobat Tell me what you want to do

Ignore Delete Archive Reply Reply All Forward Meeting Move to: ? To Manager Rules Move Actions Mark Unread Follow Up Translate Find Related Select Read Aloud Immersive Reader Zoom

Delete Respond Quick Steps Move Tags Editing Immersive Zoom

Mon 01/11/2021 7:25 PM  
 Colin P Namene <colin@environam.com>  
 FW: PROPOSED TERMINAL AT NAMPORT FOR STORAGE AND HANDLING OF INDUSTRIAL MINERALS, BASE AND RARE METALS, WALVIS BAY, ERONGO REGION.  
 To 'elzevir@namport.com.na'

 Bigenkuumba Port Services BID.pdf  
 517 KB

 Open PDFs in Adobe Acrobat

Dear Potential Interested and Affected Party

Environam Consultants Trading is a wholly Namibian owned environmental management consultancy providing an array of environmental services to our clients including: Strategic Environmental Assessments; Environmental Assessments; Strategic Environmental Management Plans; Environmental Management Systems; Environmental Auditing, Monitoring and Evaluation; Solid Waste Management; and Project Management. Our daily activities are underpinned by excellent environmental outcomes aimed at achieving a symbiotic relationship between development and the environment.

We have been appointed to undertake the environmental assessment and apply for an environmental clearance certificate from the Environmental Commissioner for the project below:

**Proposed Terminal at Namport for Storage and Handling of Industrial Minerals, Base and Rare Metals, Walvis Bay, Erongo Region.**

Any activity entailing a scheduled process referred to in the Atmospheric Pollution Prevention Ordinance, 1976; The manufacturing, storage, handling or processing of a hazardous substance defined in the Hazardous Substances Ordinance, 1974; Any process or activity which requires a permit, licence or other form of authorisation, or the modification of or changes to existing facilities for any process or activity which requires an amendment of an existing permit, licence or authorisation or which requires a new permit, licence or authorisation in terms of a law governing the generation or release of emissions, pollution, effluent or waste; The bulk transportation of dangerous goods using pipeline, funiculars or conveyors with a throughout capacity of 50 tons or 50 cubic meters or more per day; and the storage and handling of a dangerous goods, including petrol, diesel, liquid petroleum gas or paraffin, in containers with a combined capacity of more than 30 cubic meters at any one location, are listed activities as per the List of Activities requiring Environmental Clearance (Government Notice 29 of 6 February 2012) and accordingly require an Environmental Impact Assessment (EIA) to be conducted.

In line with Regulation 21(2) of the mentioned EIA Regulations, a Background Information Document (BID) is distributed to pre-identified Interested and Affected Parties as part of the public consultation process for this Environmental Impact Assessment.

An Environmental assessment will be undertaken to determine the potential impact of the development on the environment and to determine all safety, health and social impacts associated with the proposed development activities.

Kindly provide us with any input by contacting us at Mobile: +264 81 458 4297, Fax: +264 61 258 470 or E-Mail: [colin@environam.com](mailto:colin@environam.com); P.O. Box 24056, Windhoek, on or before **12 November 2021**.

Type here to search

26°C 7:27 PM 01/11/2021

File Message Help Acrobat Tell me what you want to do

Ignore Delete Archive Reply Reply All Forward Meeting Move to: ? To Manager Rules Team Email Reply & Delete Move Actions Mark Unread Follow Up Translate Find Related Select Read Aloud Immersive Reader Zoom

Delete Respond Quick Steps Move Tags Editing Immersive Zoom

Mon 01/11/2021 7:25 PM  
Colin P Namene <colin@environam.com>  
FW: PROPOSED TERMINAL AT NAMPORT FOR STORAGE AND HANDLING OF INDUSTRIAL MINERALS, BASE AND RARE METALS, WALVIS BAY, ERONGO REGION.  
To 'elzevir@namport.com.na'

 Bigenkuumba Port Services BID.pdf  
517 KB

 Open PDFs in Adobe Acrobat

An Environmental assessment will be undertaken to determine the potential impact of the development on the environment and to determine all safety, health and social impacts associated with the proposed development activities.

Kindly provide us with any input by contacting us at Mobile: +264 81 458 4297, Fax: +264 61 258 470 or E-Mail: [colin@environam.com](mailto:colin@environam.com); P.O. Box 24056, Windhoek, on or before **12 November 2021**.

We look forward to hear from you soon. Please do not hesitate to contact us for any further information.

**Regards,**

**Colin P Namene**  
Managing Director: Environam Consultants Trading  
Phone +264 61 258 394 Mobile +264 81 458 4297  
Email [colin@environam.com](mailto:colin@environam.com)  
14 Barleo Park, Kudugas Street, Northern Industry, Windhoek



File Message Help Acrobat Tell me what you want to do

Ignore Delete Archive Reply Reply All Forward Meeting Move to: ? To Manager Rules Move Actions Mark Unread Follow Up Translate Find Related Select Read Aloud Immersive Reader Zoom

Mon 01/11/2021 6:28 PM  
CP Colin P Namene <colin@environam.com>  
FW: PROPOSED TERMINAL AT NAMPORT FOR STORAGE AND HANDLING OF INDUSTRIAL MINERALS, BASE AND RARE METALS, WALVIS BAY, ERONGO REGION.  
To 'mhaingura@walvisbaycc.org.na'

Bigenkuumba Port Services BID.pdf 517 KB

Open PDFs in Adobe Acrobat

Dear Potential Interested and Affected Party

Environam Consultants Trading is a wholly Namibian owned environmental management consultancy providing an array of environmental services to our clients including: Strategic Environmental Assessments; Environmental Assessments; Strategic Environmental Management Plans; Environmental Management Systems; Environmental Auditing, Monitoring and Evaluation; Solid Waste Management; and Project Management. Our daily activities are underpinned by excellent environmental outcomes aimed at achieving a symbiotic relationship between development and the environment.

We have been appointed to undertake the environmental assessment and apply for an environmental clearance certificate from the Environmental Commissioner for the project below:

**Proposed Terminal at Namport for Storage and Handling of Industrial Minerals, Base and Rare Metals, Walvis Bay, Erongo Region.**

Any activity entailing a scheduled process referred to in the Atmospheric Pollution Prevention Ordinance, 1976; The manufacturing, storage, handling or processing of a hazardous substance defined in the Hazardous Substances Ordinance, 1974; Any process or activity which requires a permit, licence or other form of authorisation, or the modification of or changes to existing facilities for any process or activity which requires an amendment of an existing permit, licence or authorisation or which requires a new permit, licence or authorisation in terms of a law governing the generation or release of emissions, pollution, effluent or waste; The bulk transportation of dangerous goods using pipeline, funiculars or conveyors with a throughout capacity of 50 tons or 50 cubic meters or more per day; and the storage and handling of a dangerous goods, including petrol, diesel, liquid petroleum gas or paraffin, in containers with a combined capacity of more than 30 cubic meters at any one location, are listed activities as per the List of Activities requiring Environmental Clearance (Government Notice 29 of 6 February 2012) and accordingly require an Environmental Impact Assessment (EIA) to be conducted.

In line with Regulation 21(2) of the mentioned EIA Regulations, a Background Information Document (BID) is distributed to pre-identified Interested and Affected Parties as part of the public consultation process for this Environmental Impact Assessment.

An Environmental assessment will be undertaken to determine the potential impact of the development on the environment and to determine all safety, health and social impacts associated with the proposed development activities.

Kindly provide us with any input by contacting us at Mobile: +264 81 458 4297, Fax: +264 61 258 470 or E-Mail: [colin@environam.com](mailto:colin@environam.com); P.O. Box 24056, Windhoek, on or before **12 November 2021**.



File Message Help Acrobat Tell me what you want to do

Ignore Delete Archive Reply Reply All Forward Meeting Move to: ? To Manager Team Email Reply & Delete Create New Rules Move Actions Mark Unread Follow Up Translate Find Related Select Read Aloud Immersive Reader Zoom

Mon 01/11/2021 6:28 PM  
Colin P Namene <colin@environam.com>  
FW: PROPOSED TERMINAL AT NAMPORT FOR STORAGE AND HANDLING OF INDUSTRIAL MINERALS, BASE AND RARE METALS, WALVIS BAY, ERONGO REGION.  
To 'mhaingura@walvisbaycc.org.na'

 Bigenkuumba Port Services BID.pdf  
517 KB

 Open PDFs in Adobe Acrobat

An Environmental assessment will be undertaken to determine the potential impact of the development on the environment and to determine all safety, health and social impacts associated with the proposed development activities.

Kindly provide us with any input by contacting us at Mobile: +264 81 458 4297, Fax: +264 61 258 470 or E-Mail: [colin@environam.com](mailto:colin@environam.com); P.O. Box 24056, Windhoek, on or before **12 November 2021**.

We look forward to hear from you soon. Please do not hesitate to contact us for any further information.

**Regards,**

**Colin P Namene**

Managing Director: Environam Consultants Trading

Phone +264 61 258 394 Mobile +264 81 458 4297

Email [colin@environam.com](mailto:colin@environam.com)

14 Barleo Park, Kudugas Street, Northern Industry, Windhoek



File Message Help Acrobat Tell me what you want to do

Ignore Delete Archive Reply Reply All Forward Meeting Move to: ? To Manager Team Email Reply & Delete Create New Rules Move Actions Mark Unread Follow Up Translate Find Related Select Read Aloud Immersive Reader Zoom

Delete Respond Quick Steps Move Tags Editing Immersive Zoom

Fri 12/11/2021 1:21 PM  
CP Colin P Namene <colin@environam.com>  
PROPOSED TERMINAL AT NAMPORT FOR STORAGE AND HANDLING OF INDUSTRIAL MINERALS, BASE AND RARE METALS, WALVIS BAY, ERONGO REGION  
To 'elzevir@namport.com.na'

Good day Mr Gelderbloem

Further to our communication earlier on the above, we plan to undertake a consultation visit to Walvis Bay on Thursday 18 November 2021. As a key stakeholder we would like to have a moment to speak to you with the aim of soliciting your input on the proposed project. Kindly indicate if you will be able to accommodate us in your schedule or to refer us to any suitable official in your company. We don't foresee this going beyond an hour.

Regards,

**Colin P Namene**

Managing Director: Environam Consultants Trading

Phone +264 61 258 394 Mobile +264 81 458 4297

Email [colin@environam.com](mailto:colin@environam.com)

14 Barleo Park, Kudugas Street, Northern Industry, Windhoek



File Message Help Acrobat Tell me what you want to do

Ignore Delete Archive Reply Reply All Forward Meeting Move to: ? To Manager Team Email Reply & Delete Create New Move Actions Mark Unread Follow Up Translate Find Related Select Read Aloud Immersive Reader Zoom

Delete Respond Quick Steps Move Tags Editing Immersive Zoom

Fri 12/11/2021 1:30 PM  
Colin P Namene <colin@environam.com>  
PROPOSED TERMINAL AT NAMPORT FOR STORAGE AND HANDLING OF INDUSTRIAL MINERALS, BASE AND RARE METALS, WALVIS BAY, ERONGO REGION  
To 'mhaingura@walvisbaycc.org.na'  
Bcc 'duushona@walvisbaycc.org.na'; 'LHailaula@walvisbaycc.org.na'

Dear Mr Haingura

Further to our communication earlier on the above, we plan to undertake a consultation visit to Walvis Bay on Thursday 18 November 2021. As a key stakeholder we would like to have a moment to speak to you with the aim of soliciting your input on the proposed project. Kindly indicate if you will be able to accommodate us in your schedule or to refer us to any suitable official/s in your organisation. These could be colleagues in the environment and Traffic divisions. We don't foresee this going beyond an hour.

Regards,

**Colin P Namene**  
Managing Director: Environam Consultants Trading  
Phone +264 61 258 394 Mobile +264 81 458 4297  
Email [colin@environam.com](mailto:colin@environam.com)  
14 Barleo Park, Kudugas Street, Northern Industry, Windhoek



File Message Acrobat Tell me what you want to do...

Ignore Delete Reply Reply All Forward More Meeting

Move to: ? To Manager Team Email Reply & Delete

Rules OneNote

Move Actions

Mark Unread Follow Up

Tags

Translate

Find Related Select

Zoom



Fri 29/04/2022 3:17 PM  
Colin P Namene <colin@environam.com>

PROPOSED TERMINAL AT NAMPORT FOR STORAGE AND HANDLING OF INDUSTRIAL MINERALS, BASE AND RARE METALS, WALVIS BAY, ERONGO REGION

To

Bcc 'Stefanus Gariseb (Namport)'; 'titusn@icloud.com'; 'Elzevir@namport.com'



Dear Interested and Affected Party

We have the pleasure to inform you that the draft Environmental Scoping Report (DESR) and draft Environmental Management Plan (EMP) for the abovementioned project have been completed. We herewith notify all registered Interested and Affected Parties that the document is available for public comment from **28 April 2022 to 13 May 2022**.

Kindly provide your written comments and input to Environam Consultants Trading on or before **13 May 2022**, using any of the following methods:

**P.O. Box 24056, Windhoek**  
**Email:** [colin@environam.com](mailto:colin@environam.com)  
**Cell:** +264 814 584 297  
**Fax:** +264 61 258 470

Input received during the comment period will be incorporated into the Final Environmental Scoping Report that will be submitted to the Office of the Environmental Commissioner in the Ministry of Environment, Forestry and Tourism for consideration and decision making.

Kindly feel free to contact us for any further information.

Regards,

File Message Acrobat Tell me what you want to do...

Ignore Delete Reply Reply All Forward More Meeting

Move to: ? To Manager Reply & Delete

Team Email

Create New

Rules OneNote

Move Actions

Mark Unread Follow Up

Tags

Translate

Find Related Select

Zoom

Delete Respond Quick Steps Move Tags Editing Zoom



Fri 29/04/2022 3:17 PM

Colin P Namene <colin@environam.com>

PROPOSED TERMINAL AT NAMPORT FOR STORAGE AND HANDLING OF INDUSTRIAL MINERALS, BASE AND RARE METALS, WALVIS BAY, ERONGO REGION

To

Bcc 'Stefanus Gariseb (Namport)'; 'titusn@icloud.com'; 'Elzevir@namport.com'



Kindly feel free to contact us for any further information.

Regards,

**Colin P Namene**

Managing Director: Environam Consultants Trading

Phone +264 61 258 394 Mobile +264 81 458 4297

Email [colin@environam.com](mailto:colin@environam.com)

14 Barleo Park, Kudugas Street, Northern Industry, Windhoek



PROPOSED TERMINAL AT NAMPORT FOR STORAGE AND HANDLING OF INDUSTRIAL MINERALS, BASE AND RARE METALS, WALVIS BAY, ERONGO REGION - Message...

File Message Acrobat Tell me what you want to do...

Ignore Delete Reply Reply All Forward More Message Tracking Move To Manager Reply & Delete Create New Move Actions Mark Unread Follow Up Translate Find Related Select Zoom



Thu 28/04/2022 4:24 PM

Colin P Namene <colin@environam.com>

PROPOSED TERMINAL AT NAMPORT FOR STORAGE AND HANDLING OF INDUSTRIAL MINERALS, BASE AND RARE METALS, WALVIS BAY, ERONGO REGION

To

Bcc 'akreiner@mfmr.gov.na'; 'a\_kreiner\_2000@yahoo.com'; 'fmbango@erongored.com.na'; 'rouseb@erongored.com.na'; 'pmbridge@iway.na'; 'cro@erongorc.gov.na'; 'dbenson@erongorc.gov.na'; 'mayorsec@walvisbaycc.org.na'; 'mhaingura@walvisbaycc.org.na'; 'aburger@walvisbaycc.org.na'; 'duushona@walvisbaycc.org.na'; 'ceth@iafrica.com.na'; 'hhitula@walvisbaycc.org.na'; 'enambahu@walvisbaycc.org.na'; 'JManale@walvisbaycc.org.na'; 'JLawrence@walvisbaycc.org.na'; 'DTjarokua@walvisbaycc.org.na'; 'Hailaula@walvisbaycc.org.na'; 'NAmutenya@walvisbaycc.org.na'; 'Timoteus.Mufeti@met.gov.na'; 'hehemiaa@mawf.gov.na'; 'Maria.Amakali@mawf.gov.na'; 'gwamakali@gmail.com'; 'Cynthia.Ortmann@mawf.gov.na'; 'Paulina.Mufeti@mawf.gov.na'; 'NehemiaA@namwater.com.na'; 'venterw@namwater.com.na'; 'simson.haulofu@nampower.com.na'; 'gert.fourie@nampower.com.na'; 'Victor.Libuku@mfmr.gov.na'; 'Victor.Libuku@gmail.com'; 'AupokoloF@namwater.com.na'; 'Grant.Muller@nampower.com'



Dear Interested and Affected Party

We have the pleasure to inform you that the draft Environmental Scoping Report (DESR) and draft Environmental Management Plan (EMP) for the abovementioned project have been completed. We herewith notify all registered Interested and Affected Parties that the document is available for public comment from **28 April 2022 to 13 May 2022**.

Kindly provide your written comments and input to Environam Consultants Trading on or before **13 May 2022**, using any of the following methods:

**P.O. Box 24056, Windhoek**  
**Email: [colin@environam.com](mailto:colin@environam.com)**  
**Cell: +264 814 584 297**  
**Fax: +264 61 258 470**

Input received during the comment period will be incorporated into the Final Environmental Scoping Report that will be submitted to the Office of the Environmental Commissioner in the Ministry of Environment, Forestry and Tourism for consideration and decision making.

Kindly feel free to contact us for any further information.

Type here to search

Taskbar icons: File Explorer, Calendar, Edge, Mail, Firefox, Teams, Word, System tray: 21°C, Network, Sound, ENG INTL, 7:21 PM, 12/05/2022, 23

PROPOSED TERMINAL AT NAMPORT FOR STORAGE AND HANDLING OF INDUSTRIAL MINERALS, BASE AND RARE METALS, WALVIS BAY, ERONGO REGION - Message...

File Message Acrobat Tell me what you want to do...

Ignore Delete Reply Reply All Forward Meeting Message Tracking

Move to: ? To Manager Team Email Reply & Delete Create New

Move Actions Mark Unread Follow Up Translate Find Related Select Zoom



Thu 28/04/2022 4:24 PM  
Colin P Namene <colin@environam.com>

PROPOSED TERMINAL AT NAMPORT FOR STORAGE AND HANDLING OF INDUSTRIAL MINERALS, BASE AND RARE METALS, WALVIS BAY, ERONGO REGION

To

Bcc 'akreiner@mfmr.gov.na'; 'a\_kreiner\_2000@yahoo.com'; 'fmbango@erongored.com.na'; 'rouseb@erongored.com.na'; 'pmbridge@iway.na'; 'cro@erongorc.gov.na'; 'dbenson@erongorc.gov.na'; 'mayorsec@walvisbaycc.org.na'; 'mhaingura@walvisbaycc.org.na'; 'aburger@walvisbaycc.org.na'; 'duushona@walvisbaycc.org.na'; 'ceth@iafrica.com.na'; 'hhitula@walvisbaycc.org.na'; 'enambahu@walvisbaycc.org.na'; 'JManale@walvisbaycc.org.na'; 'JLawrence@walvisbaycc.org.na'; 'DTjarokua@walvisbaycc.org.na'; 'LHalaula@walvisbaycc.org.na'; 'NAmutenya@walvisbaycc.org.na'; 'Timoteus.Mufeti@met.gov.na'; 'hehemiaa@mawf.gov.na'; 'Maria.Amakali@mawf.gov.na'; 'gwamakali@gmail.com'; 'Cynthia.Ortmann@mawf.gov.na'; 'Paulina.Mufeti@mawf.gov.na'; 'NehemiaA@namwater.com.na'; 'venterw@namwater.com.na'; 'simson.haulofu@nampower.com.na'; 'gert.fourie@nampower.com.na'; 'Victor.Libuku@mfmr.gov.na'; 'Victor.Libuku@gmail.com'; 'AupokoloF@namwater.com.na'; 'Grant.Muller@nampower.com'



Kindly feel free to contact us for any further information.

Regards,

**Colin P Namene**  
Managing Director: Environam Consultants Trading  
Phone +264 61 258 394 Mobile +264 81 458 4297  
Email [colin@environam.com](mailto:colin@environam.com)  
14 Barleo Park, Kudugas Street, Northern Industry, Windhoek



Type here to search

Taskbar: File Explorer, Calendar, Edge, Mail, Firefox, Teams, Word, System tray: 21°C, ENG INTL, 7:21 PM, 12/05/2022, 23

- New Email
- Favorites
- colin@environam.com
  - Inbox 1667
  - Drafts
  - Sent Items
  - Deleted Items
  - Junk Email [1]
  - Outbox
  - RSS Feeds
  - Search Folders
- colin@environam.com (1)
  - Inbox 219**
  - Drafts [50]
  - Sent
  - Trash 2
  - Infected Items
  - Outbox
  - Sent Items
  - Spam [6]
  - Search Folders

Search Current Mailbox (Current Mailbox)

All Unread By Date Newest

Mail Delivery System Undelivered Mail Returned ... This is the mail system at	29/04/2022
David Uushona Read: PROPOSED TERMINA... Your message	29/04/2022
Fessor Mbango Read: PROPOSED TERMINA... Your message	29/04/2022
Cynthia Ortmann Read: PROPOSED TERMINA... Your message	29/04/2022
<b>Colin P Namene</b> Fwd: Proposed Developme... ----- Forwarded message	28/04/2022
Haulofu, Simson Read: PROPOSED TERMINA... -----	28/04/2022
Andre Burger Read: PROPOSED TERMINA... Your message	28/04/2022
Timoteus Mufeti Read: PROPOSED TERMINA... Your message	28/04/2022
Anja Kreiner Read: PROPOSED TERMINA... Your message	28/04/2022
Aupokolo Fillemon	

Reply Reply All Forward

Thu 28/04/2022 10:10 PM  
Colin P Namene <namenec@gmail.com>  
Fwd: Proposed Development of !Nara Namib Free Economic Industrial Zone on a Portion of Farm 58, Walvis Bay, Erongo Region.

To: Colin P Namene

You replied to this message on 28/04/2022 10:24 PM.

Comments - Proposed... 55 KB

----- Forwarded message -----  
From: **Lumbu, Elina** <lumbue@ra.org.na>  
Date: Wed, 20 Apr 2022 at 15:18  
Subject: RE: Proposed Development of !Nara Namib Free Economic Industrial Zone on a Portion of Farm 58, Walvis Bay, Erongo Region.  
To: Colin P Namene <colin@environam.com>

Good day

Please find the attached.

Regards

From: Colin P Namene <colin@environam.com>  
Sent: Wednesday, March 30, 2022 9:45 PM



11 REGISTRATION AND COMMENTS

Participant Name: Eling Hamatwi - Lumbu	Organization/Affiliations: Roads Authority
Position: Senior Specialist Roads Legislations Compliance	Telephone:
Fax: 061 284 7427	E-Mail: lumbue@ra.org.na
Postal Address: P/Bag 12030, AussPannPlaz	
Comments/Suggestions and Questions: • Please Provide Roads Authority with info on how the development will be accessed. • No direct access should to the Freeway will be supported. • The development's boundary should be positioned at at least 45m from the edge of the road the proclaimed national roads, both Trunk & Main roads.	

Please complete the form and return document to be registered as an Interested & Affected Party (I&AP) to:

File Message Acrobat Tell me what you want to do...

Ignore Delete Reply Reply All Forward More Meeting

Move to: ? To Manager Reply & Delete

Team Email

Create New

Rules OneNote

Move Actions

Mark Unread Follow Up

Tags

Translate

Find Related Select

Zoom



Thu 28/04/2022 10:24 PM  
Colin P Namene <colin@environam.com>

RE: Proposed Development of !Nara Namib Free Economic Industrial Zone on a Portion of Farm 58, Walvis Bay, Erongo Region.

To 'lumbue@ra.org.na'



Dear Ms Lumbu

Access is planned to initially be obtained from the road towards the Walvis Bay International Airport in the short term. A rail and road servitude has been provided for along the northern border of Portion 3 of Farm 58, as well as another one further north along Portion 8 of Farm 58. These will make it possible for long term access to this and other developments in Farm 58 once the road interchange is completed. The red arrows in the attached image indicates the short-term access into portion 4 of Farm 58 from the Walvis Bay International Airport road and the long-term access north of Portions 3 and 8 of Farm 58.

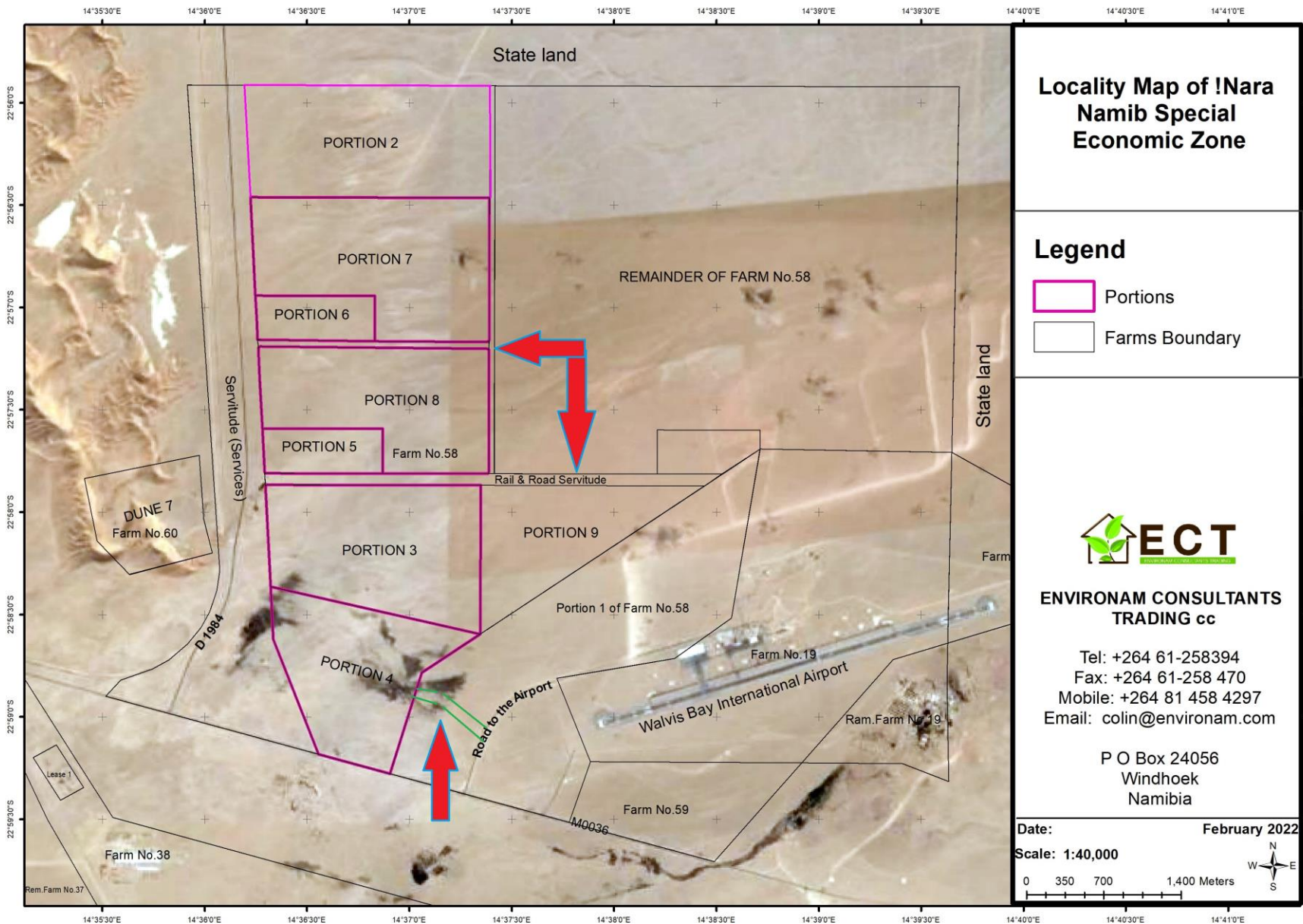
We trust that you find this in order.

Regards,

Colin

----- Forwarded message -----

From: **Lumbu, Elina** <lumbue@ra.org.na>  
Date: Wed, 20 Apr 2022 at 15:18  
Subject: RE: Proposed Development of !Nara Namib Free Economic Industrial Zone on a Portion of Farm 58, Walvis Bay, Erongo Region.  
To: Colin P Namene <colin@environam.com>



**MINUTES OF THE MEETING BETWEEN WALVIS BAY MUNICIPALITY SENIOR OFFICIALS AND ENVIRONAM CONSULTANTS TRADING, HELD ON 15 DECEMBER 2021, REGARDING THE ENVIRONMENTAL ASSESSMENT FOR THE: PROPOSED BIGENKUUMBA PORT SERVICES TERMINAL AT NAMPORT FOR STORAGE AND HANDLING OF INDUSTRIAL MINERALS, BASE AND RARE METALS, WALVIS BAY, ERONGO REGION.**

**VENUE: VIRTUAL ZOOM MEETING**

**TIME: 11H00**

**PRESENT:**

C.P. Namene – Environam Consultants Trading (ECT)

V. Nangolo – Viromind

**INTRODUCTION**

In terms of Section 21 of the EIA Regulations a call for open consultation with all I&APs at defined stages of the EIA process is required. This entails participatory consultation with key stakeholders to provide an opportunity to comment on the proposed project. A meeting was convened for this purpose and was attended by representatives of the Municipality of Walvis Bay Senior Officials across various departments, and Environam Consultants Trading (CP Namene), and Viromind (V Nangolo).

**WELCOMING**

Mr. Namene welcomed everyone to the meeting and introduced the ECT team and Ms Nangolo of Viromind, the Air Quality Specialist on the project.

**ENVIRONMENTAL ASSESSMENT**

Mr. Namene provided a background on the proposed BigenKuumba Port Services Terminal at Namport for Storage and Handling of Industrial Minerals, Base and Rare Metals, and that an environmental clearance is required before such a development can proceed. He further explained the environmental assessment (EA) process and the reasons why EAs are carried out.

The officials were also informed about the public participation process that has taken place so far, including newspaper advertisements, public notices on site, and communication to other pre-identified Interested and Affected Parties. Information was given on the components of the development touching on aspects such as the locality, engineering services and access. After the presentation the floor was opened for questions and input from the officials.

## **INPUT**

Below is a summary of the input from the Walvis Bay Municipality officials:

### **Mr D Uushona – Environment Department**

Mr Burger raised a few pertinent issues related to the transportation route, key stakeholders, traffic, previous studies etc.

- He wanted to know which route will be used for the transportation of the products. I was explained that the proposed route is the one along the new Walvis Bay interchange into the C14, over the circle and onto Hanna Mupetami Street to the port.
- Key stakeholders have to be consulted such as Namport and the adjacent owners. For reaching out to nearby communities one could distribute information brochures to the residents by hand. Advice was given to make contact with Mr Burger, a resident of that community.
- Is the EIA only focussing on the area allocated to the proponent? The answer was in the affirmative.
- There is a potential impact on traffic into and out of town. It is strongly recommended to engage the municipal traffic division, led by Ebben Platt.
- Other EIA's have been carried out for developments in the vicinity, for example the one for the Botswana Dry Port. It is advisable for the consultants to familiarise themselves with the content of these studies.

### **L Hailaula – Environment Department**

- Emphasis on consulting previous studies done in the port area as part of literature review.
- On indication that the consultant will require a "consent letter" from the municipality to accompany the application for an Environmental Clearance Certificate from the municipality, it was indicated that the municipality will be in a better position to consider that once the report is ready and the issues raised during this consultation have been addressed.

### **Mr Dreyer – Health Department**

- It is critical to engage the municipal traffic department to determine the most appropriate and safe route to avoid experiences of the effects of mishandling hazardous substances such as the Ammonia Nitrate incident.
- Will all commodities be transported in bulk bags? The products will be stored in bulk bags as well as containerized storage.
- It is advisable that activities are restricted to normal working hours.

## **CONCLUSION**

After the interactive session information on the way forward was shared with the attendees, in terms of the timeframe left for additional input before the comment period ends.

The meeting was closed off and officially adjourned.

**MINUTES OF THE MEETING BETWEEN WALVIS BAY MUNICIPALITY SENIOR TRAFFIC OFFICERS AND ENVIRONAM CONSULTANTS TRADING, HELD ON 27 JANUARY 2022, REGARDING THE ENVIRONMENTAL ASSESSMENT FOR THE: PROPOSED BIGENKUUMBA PORT SERVICES TERMINAL AT NAMPORT FOR STORAGE AND HANDLING OF INDUSTRIAL MINERALS, BASE AND RARE METALS, WALVIS BAY, ERONGO REGION.**

**VENUE: MUNICIPAL TRAFFIC OFFICES**

**PRESENT:**

C.P. Namene – Environam Consultants Trading (ECT)  
C. Ita – Environam Consultants Trading (ECT)  
Ebben Platt – Walvis Bay Municipality Traffic Department  
Asser Shikuniva - Walvis Bay Municipality Traffic Department  
Clifton Jacob - Walvis Bay Municipality Traffic Department

**INTRODUCTION**

In terms of Section 21 of the EIA Regulations a call for open consultation with all I&APs at defined stages of the EIA process is required. This entails participatory consultation with key stakeholders to provide an opportunity to comment on the proposed project. A meeting was convened for this purpose and was attended by representatives of the Municipality of Walvis Bay Senior Traffic Officers and Environam Consultants Trading.

**WELCOMING**

Mr. Namene welcomed everyone to the meeting and introduced the ECT team.

**ENVIRONMENTAL ASSESSMENT**

Mr. Namene provided a background on the proposed BigenKuumba Port Services Terminal at Namport for Storage and Handling of Industrial Minerals, Base and Rare Metals, and that an environmental clearance is required before such a development can proceed. He further explained the environmental assessment (EA) process and the reasons why EAs are carried out.

The officers were also informed about the public participation process that has taken place so far, including newspaper advertisements, public notices on site, and communication to other pre-identified Interested and Affected Parties. Information was given on the components of the development touching on aspects such as the locality, engineering services and access. After the presentation the floor was opened for questions and input from the officers.

## **INPUT**

Below is a summary of the input from the Walvis Bay Municipality Traffic Officers:

- Walvis Bay is a harbour town and therefore the large movement of cargo is inevitable, as it is an important part of the Walvis Bay economy. The port is thus a very busy area.
- A question was asked about the type of trucks and frequency of movement. The response was that we are looking at approximately 4 super link trucks per day.
- The B2 is overwhelmed by the movement of trucks therefore the C14 is the only viable preferred entrance into Walvis Bay town for cargo trucks, where it crosses the circle into Hannah Mupetami Street towards the harbour.
- There is no waiting area at the harbour as trucks are pulling up, this leads to an overflow into the streets, causing great inconvenience.
- The truck operators have to consider where their drivers will overnight as there are no formal overnight facilities available although some companies have their own yards.
- It will be a challenge if the development is going to operate for 24hours, as was the case with the Botswana Dry Port.
- Drivers that convey dangerous good have to have their licences endorsed.
- Drivers have to comply to local traffic laws and regulations. Past experiences have shown that foreign drivers come with their passports into town, commit offences and then leave without facing the law. Therefore, it's important to know how long the drivers will be based here.

## **CONCLUSION**

After the interactive session information on the way forward was shared with the Officers, in terms of the timeframe left for additional input before the comment period ends.

The meeting was closed off and officially adjourned.





# NSFAF appeals against Nghiwete's reinstatement

• BY TRACY TAFIRENYIKA

THE embattled Namibia Student Financial Assistance Fund (NSFAF) has appealed against the court's decision to reinstate its CEO Hilya Nghiwete, who was found to have been unfairly dismissed.

The student fund, has however acceded to pay the N\$2.2 million dollars in damages and over N\$160 000 monthly income she is entitled to from this month onwards.

Nghiwete got marching orders amidst allegations of

maladministration at the helm of the parastatal in February last year, following a lengthy suspension since April 2018.

According to the Office of the Labour Commissioner, they ordered Nghiwete's reinstatement on September 1 and that she be offered about N\$2,7 million after a labour arbitrator found that she was unfairly dismissed from her position as NSFAF CEO. When Nghiwete was suspended in 2018, the board told her in a letter: "This is on account of serious allegations that have come to the

attention of the board.

"The concerned allegations border on the centrality of maladministration and/or administrative corruption, amongst other misconducts, which upon preliminary review by the board presented prima facie reasons justifying that in the interest of the institution and the public at large, certain disciplinary action be considered against her".

In order to find an insight on whether she has been paid the money and reinstated back to her position Nghiwete told *Confidente* that she is

not aware of what is on the ground and she is out of the country.

"I am currently out of the country, you have to consult NSFAF for this information that is the best way. I really don't know what is going on with them I think the best is that you have to contact them. I can also not comment on this matter please talk to my legal advisor Sisa Namandje," she stated.

*Confidente* could not get hold of Namandje until the day for printing.

NSFAF board chairperson, Klemens /Awarab stated that, the

institution has however appealed to the labour commissioner against Nghiwete's reinstatement.

"NSFAF appealed the decision and the case is with the courts and I cannot comment."

The Office of the Labour Commissioner ordered NSFAF to reinstate her by September 1 and this has remained unfulfilled pending the outcome of the appeal.

Nghiwete, who earned N\$2 million annually, was suspended on full pay for 21 months before she was fired after a protracted legal battle.

## Churches against abortion law being revised

• BY HERTTA-MARIA AMUTENJA

SECRETARY General of the Council of Churches in Namibia, Ludwig Beukes has expressed that the Christian community does not concur with the government's stance of supporting to review the current abortion law.

"Christian churches are guided by the Bible and the Bible does not condone abortion. It is considered as murder, which is a sin. We do not agree at all with the government looking to legalise abortion. It is totally against the Christian Bible" said Beukes.

Beukes revealed this to *Confidente* this week, after

the Ministry of Health and Social Services executive director Ben Nangombe said the ministry supports reviewing the current apartheid law, referring to it as 'outdated'.

Subsequent to pro-choicers' last year June calling to legalise abortion in Namibia, the health ministry is finally supporting their call.

Nangombe said this at the ongoing public hearing of the parliamentary standing committee on gender equality, social development and family on the possible legalisation of abortion.

The law to be revised is the Abortion and Sterilisation Act of 1975, which the country inherited from South Africa's

apartheid government at independence.

The recommendation to review the law comes after pro-choicers' calls to legalise abortion in Namibia intensified in June last year.

The group's petition to amend the law garnered over 60 000 signatures by September 2020.

Beukes further went on to say lawmakers should find the grassroot problem rather than listen to the minority of the county that is seeking abortion legalisation and not feel pressured by other countries.

"Lawmakers and leaders should listen to wishes and aspirations of the majority. More than half of the Namibian people are Christians and they

make up the majority. As Christians, abortion is illegal and should not be legalised at all.

"Leaders need to look at it holistically and first find the root problem and not just do as other countries are doing. Although South Africa has legalised abortion, there are still so many people doing illegal and backstreet abortions so meaning whether it is legal or not people will still do it backyard. Namibia should not feel forced by petitions and neighbouring countries that have legalised abortion," he added.

President of Namibian Islamic Judicial Council Muhamed Negumbo told *Confidente* this week that the local Muslim community is also not in favour of legalising abortion unless it is life threatening to the pregnant woman.

"The Qu'ran will never allow us to accept legalisation of abortion, however if it comes to a time where it's a choice between the mother or the fetus or unborn baby then only maybe could one abort. Otherwise abortion cannot be legalised for the mere fact of just legalising it generally," he said

In June 2020, about 250 people from different churches in Windhoek marched to parliament to object to the legalisation of abortion in Namibia. Pastor Zeldia van der Colff launched a petition calling to reject the legalisation of abortion.

Speaking on behalf of the group at the time, Haruna Goroh, pastor of Jesus Centre Family Church, said the future of the nation is at stake and Namibia should reject the legalisation of abortion.



CDV president Gotthard Kandume with Deputy Bishop Abraham Kheibeb, Bishop Sageus /Keib and CDV treasurer Pastor Ignatius Vries at the donation of the food parcels in Windhoek

• BY JEREMIAH NDJOZE

AS the impact of the Covid-19 pandemic continues to ravage the economic welfare of Namibians from all walks of life, men and women of the cloth have not been spared and recently their plight caught the attention of the leadership at the Christian Democratic Voice (CDV) political formation.

This week the party donated food parcels to the Evangelical Lutheran Church in Namibia's (ELCIN) presiding Bishop Sageus /Keib and his deputy Abraham Kheibeb. It has emerged that due to limited resources the ELCIN bishops are yet to receive any form of payment from the church, for the past five months.

Handing over the donation CDV president, Gotthard Kandume maintained that the donation was born out of the political formation's desire to reach out to some of the overlooked nooks of Namibian society with the much needed assistance during these trying times, albeit in limited measures.

"The party's National Executive Committee (NEC) decided to meet the church halfway in order to promote - in limited measures - the welfare of the custodians of the church. This is because we see the church as a noble institution upon which the future of our nation is dependent," Kandume said adding that, this move should not be viewed as a political one but a noble duty built on the same Christian values on which the CDV's moral compass is underpinned.

He further maintained that the party's assistance to the church in Namibia is not dictated by doctrines and remains non-denominational, as they have also assisted Pentecostal

movements and other congregations during this time of need.

CDV secretary general, Fiona Geirises reiterated the party's commitment to ensuring that Christians in particular are not ignorant to the politics of the day.

She maintained that the donation should not only serve as a kind gesture from the party, but as a step towards a greater relationship between the church and the political spheres, reminiscent of the liberation struggle era.

"Let this be the beginning of greater things between the two institutions," she said.

CDV treasurer Ignatius Vries as well as party vice president Dr Shaama Nicodemus reiterated the church's role as the backbone of society and the positive impact that a unity of purpose between the church and the country's political formations can have on the populace.

Bishop /Keib welcomed the donation and maintained that it goes a long way into assisting them in the execution of their duties.

Upon enquiry, he confirmed that ELCIN has been hard hit by financial difficulties since the emergence of the Covid-19 pandemic as many of the parishioners from whom the church derives an income were equally affected.

"As a church, we do not generate an income but depend on the goodwill of our parishioners. Covid brought everything to a standstill and so did the little that we used to get," /Keib said.

He however maintained that with the lifting of some of the stringent regulations, various parishes are now looking at activating their respective fundraising in order to weather the storm.



### NOTICE FOR PUBLIC PARTICIPATION ENVIRONMENTAL IMPACT ASSESSMENT

Environam Consultants Trading cc (ECT) hereby gives notice to all potentially Interested and Affected Parties (I&APs) that an application will be made to the Environmental Commissioner in terms of the Environmental Management Act (No 7 of 2007) and the Environmental Impact Assessment Regulations (GN 30 of 6 February 2012) for the following:

**PROJECT NAME:** Proposed Terminal at Namport for Storage and Handling of Industrial Minerals, Base and Rare Metals

**PROJECT LOCATION:** Portion of Erf 1920 within the Walvis Bay Port

**PROJECT DESCRIPTION:** The project is composed of the following amenities:

- Storage and Handling of Industrial Minerals, Base and Rare Metals.

**PROPOSER:** BigenKuumba Terminal

**REGISTRATION OF I&APs AND SUBMISSION OF COMMENTS:** All Interested and Affected Parties (I&APs) are hereby invited to register and submit their comments, concerns or questions in writing, kindly contact:

Email: colin@environam.com

Fax: 061 258 470 or

Mobile: 0814584297 on or before **04 November 2021**.

**Date and venue of public meeting will be communicated to registered I&APs.**

### Contact us:

Windhoek  
•Tel: (061) 246136  
•PO Box 5033, Ausspannplatz, Windhoek  
•Email: editor@confidentenamibia.com  
•Website: www.confidentenamibia.com



Editor in Chief  
Max Hamata  
max@confidentenamibia.com

News Editor  
Hilary Mare  
hilary@confidentenamibia.com

Entertainment Journalist  
Rosalia David  
rosalia@confidentenamibia.com

Head of Marketing and Business Development  
Kenneth Karamata  
kenneth@confidentenamibia.com

Sports Journalist  
Michael Uugwanga  
michael@confidentenamibia.com

Distribution  
Natasha Kandombo  
natasha@confidentenamibia.com

Production  
Nicodemus Nairenge  
nico@confidentenamibia.com

Finance/ Debtors  
Loide Moses  
loide.moses@confidentenamibia.com

Follow us on



The Confidente

Find us on



The Confidente

**PUBLIC NOTICE****ENVIRONMENTAL IMPACT ASSESSMENT (EIA)**

Notice is hereby given that an application for Environmental Clearance Certificate (ECC) will be made to the Ministry of Environment, Forestry & Tourism (MEFT) in terms of the Environmental Management Act (Act 7 of 2007) and applicable Regulations with respect to the following listed activity:

**ACTIVITY:** Construction and Operation of a New Fuel Filling Station and Auxiliary Services

**LOCATION:** Erf 1206, Off C46 Highway, Outapi Townlands, OUTAPI, Omusati Region

**PROPONENT:** SFACFT Properties PTY Ltd

**PUBLIC MEETING:** No public meeting will be held, but Interested and Affected Parties (IAPs) are hereby invited to request a copy of the Background Information Document (BID) and to submit their inputs and/or concerns in writing to the contact details provided below.

**CLOSING DATE:** 12 November 2021

**EIA CONSULTANT:**

Ekwao Consulting  
Cell: 081 418 3125  
Fax: 088 645 026  
Email: [ekwao@iway.na](mailto:ekwao@iway.na)  
Inquiries: Joel Shafashike

**NOTICE FOR PUBLIC PARTICIPATION  
ENVIRONMENTAL IMPACT ASSESSMENT**

Environam Consultants Trading cc (ECT) hereby gives notice to all potentially Interested and Affected Parties (I&APs) that an application will be made to the Environmental Commissioner in terms of the Environmental Management Act (No 7 of 2007) and the Environmental Impact Assessment Regulations (GN 30 of 6 February 2012) for the following:

**PROJECT NAME:** Proposed Terminal at Namport for Storage and Handling of Industrial Minerals, Base and Rare Metals

**PROJECT LOCATION:** Portion of Erf 1920 within the Walvis Bay Port

**PROJECT DESCRIPTION:** The project is composed of the following amenities:

- Storage and Handling of Industrial Minerals, Base and Rare Metals.

**PROPONENT:** BigenKuumba Terminal

**REGISTRATION OF I&APs AND SUBMISSION OF COMMENTS:** All Interested and Affected Parties (I&APs) are hereby invited to register and submit their comments, concerns or questions in writing, kindly contact:

Email: [colin@environam.com](mailto:colin@environam.com)

Fax: 061 258 470 or

Mobile: 0814584297 on or before **04 November 2021**.

**Date and venue of public meeting will be communicated to registered I&APs.**

**NOTICE**

Take notice that **HARMONIC TOWN PLANNING CONSULTANTS CC, TOWN AND REGIONAL PLANNERS**, on behalf of the owner of the respective erven, intends to apply to the **Divundu Village Council and Urban and Regional Planning Board** for the:

- Consolidation of Erf 508 and Erf 534 into Consolidated Erf A;**
- Consolidation of Erf 510, Erf 511 and Erf 512 into Consolidated Erf B;**
- Amendment of Title Conditions of Erven 508, 510, 511, 512 and 534 from "Industrial" to "Business".**

Erf No. 508, 509, 510, 511, 512 and 534 Extension 2, Divundu measure approximately  $\pm 2.9937$  Ha in extent. The owners of Erf No. 508, 509, 510, 511, 512 and 534 Extension 2, Divundu intend to consolidate and change title conditions for their erven for the purposes of a shopping mall development. Additionally, parking to the development will be provided in accordance with the requirements of the Divundu Village Council.

Further take notice that the plan of the Erf lies for inspection on the town planning notice board at the **Divundu Village Council** and at **Harmonic Town Planning Offices, 76B Pasteur Street, Windhoek West**.

Further take notice that any person objecting to the proposed use of the land as set out above may lodge such objection together with the grounds thereof, with the **Divundu Village Council** and with the Applicant in writing within 14 days of the last publication of this notice (**final date for objections is Friday, 19 November 2021**).



Contact: Harold Kisting  
**Harmonic Town Planning Consultants CC**  
Town and Regional Planners  
P.O. Box 3216 Windhoek  
Cell 081 127 5879  
Fax 088646401  
Email: [hkisting@namibnet.com](mailto:hkisting@namibnet.com)

**PUBLIC NOTICE****ENVIRONMENTAL IMPACT ASSESSMENT FOR A PROPOSED GAS CYLINDERS' WAREHOUSE AT ERF 3236 IN WALVIS BAY**

Candy Consultancy cc hereby give notice to all potentially Interested and Affected Parties (I&APs) that an application will be made to Environmental Commissioner in terms of the Environmental Management Act (No 7 of 2007) and the Environmental Impact Assessment Regulations (GN 30 of 6 February 2012) for the following activity:

**PROJECT NAME:** Construction of a Gas cylinders' warehouse at Erf 3236 in Walvis Bay.

**PROJECT LOCATION:** Erf 3236 at the corner of Rooikop road and 18<sup>th</sup> Road, Industrial area, Walvis Bay

**PROPONENT:** Industrial Gas Namibia

**ENVIRONMENTAL CONSULTANT:** Candy Consultancy cc

**PROJECT DESCRIPTION:** The project activities will include the construction work and installation of the warehouse to store and distribute industrial gas cylinders.

**Public Meeting:**

**Date:** 30 October 2021

**Time:** 11h00

**Venue:** Sunnyside Guesthouse and Conference, 15<sup>th</sup> Rd, Walvis Bay

**REGISTRATION OF I&APs AND SUBMISSION OF COMMENTS:**

In line with Namibia's Environmental Management Act (No. 7 of 2007) and EIA regulations (GN 30 of 6 February 2012), all I&APs are hereby invited to register and submit their comments, concerns or questions. All I&APs will be provided with a Background Information Document (BID) consisting of descriptive information about the development activity. Should you wish to register as an I&AP, kindly contact Candy Consultancy cc on the contact details below. All prevention measures related to COVID-19 will be considered.

**Lilian Ondigo, Tel:** +264 (0) 81 826 8996

Email: [lilianondigo@gmail.com](mailto:lilianondigo@gmail.com) or [candyconsultancy@gmail.com](mailto:candyconsultancy@gmail.com)

**CLOSING DATE FOR COMMENTS:** 15 November 2021



Candy Consultancy Cc  
- Serving the Environment -

**MEDICAL AND HEALTH CARE COLLEGE**

**2022  
JANUARY INTAKE  
REGISTRATION  
NOW OPEN**

**REQUIREMENTS:**

- ID COPY
- 2 PASSPORT PHOTOS
- GRADE: 10, 11, 12
- REGISTRATION FEE: NS 500
- DURATION: 6 MONTHS

**HEALTH ASSISTANCE COURSE**

CONTACT US:

Cell: 0818714441



**MEDICAL AND HEALTH CARE COLLEGE**



[medicalandhealthcc@gmail.com](mailto:medicalandhealthcc@gmail.com)



**THEORY**

**PRACTICAL**

**HAPPY END**

**SHAPING THE YOUTH INTO HEALTH PROFESSIONALS  
(PRACTICAL ATTACHMENT DONE AT HOSPITALS)**

# Port of Walvis Bay pivotal in Zambia-US copper trade

A shipment of 8 500 metric tons of break-bulk copper cathodes was exported through the port of Walvis Bay recently, destined for the United States. According to the Namibia Ports Authority (Namport) this is the second of its kind export through Walvis Bay.

The bulk carrier vessel Unisea loaded the copper cathode. Break-bulk cargo shipments are on the increase as there is a global shortage of cargo containers. The copper cathodes were produced at the Mopani Copper Mine in Zambia and transported to Walvis Bay by road.

“Due to the ongoing global shortage in containers, it has become a phenomenon for shippers to opt for their consignments to be carried by bulk vessels to ensure continuity of operations and less dependency on containers”, Namport explained in a statement.

With Namibia's ports being strategically located along the West Coast of Africa, and supplemented by the country's excellent road infrastructure which is rated number one in Africa, the country continues to play a leading role in the facilitation of trade via our transport corridors serving hinterland markets

within SADC, further reads the statement.

Namibia has four transport corridors that connects it to other SADC countries namely; Trans Kunene connecting Namibia to Angola, the Walvis Bay Ndola Lubumbashi Development Corridor connecting to Zambia and southern Democratic Republic of Congo, Trans Kalahari Corridor connecting Namibia to Botswana and lastly the Trans-Oranje Corridor responsible for connecting Namibia to the Republic of South Africa.

The Namibian ports are not only strategically located, but the Ports Authority has furthered this advantage by investing into state-of-the-art infrastructure and equipment in order to provide a superior customer service experience to everyone making use of its facilities at both ports.



**MOUNT SINAI RECOVERY CENTRE**  
ROAD TO RECOVERY

**Drug & Alcohol Addiction Treatment Centre**

For more info contact Arno Engels  
Cell: 081 860 8326  
email:  
[mountsinainamibia@gmail.com](mailto:mountsinainamibia@gmail.com)

**ECT**  
Environmental Consultants Trading cc

**NOTICE FOR PUBLIC PARTICIPATION ENVIRONMENTAL IMPACT ASSESSMENT**

Environam Consultants Trading cc (ECT) hereby gives notice to all potentially Interested and Affected Parties (I&APs) that an application will be made to the Environmental Commissioner in terms of the Environmental Management Act (No 7 of 2007) and the Environmental Impact Assessment Regulations (GN 30 of 6 February 2012) for the following:

**PROJECT NAME:** Proposed Terminal at Namport for Storage and Handling of Industrial Minerals, Base and Rare Metals  
**PROJECT LOCATION:** Portion of Erf 1920 within the Walvis Bay Port  
**PROJECT DESCRIPTION:** The project is composed of the following amenities:  
· Storage and Handling of Industrial Minerals, Base and Rare Metals.  
**PROPONENT:** BigenKuumba Terminal

**REGISTRATION OF I&APs AND SUBMISSION OF COMMENTS:** All Interested and Affected Parties (I&APs) are hereby invited to register and submit their comments, concerns or questions in writing, kindly contact: Email: [colin@environam.com](mailto:colin@environam.com)  
Fax: 061258470 or  
Mobile: 0814584297 on or before **04 November 2021**.  
**Date and venue of public meeting will be communicated to registered I&APs.**

**WALVIS BAY**  
YOUR OPPORTUNITIES

**PERMANENT CLOSURE OF PORTION A OF ERF 3127 KUISEBMOND AS PUBLIC OPEN SPACE**

Notice is hereby given in terms of Section 50(3)(a)(i) of the Local Authorities Act, 1992 (Act No. 23 of 1992), as amended, that the Municipality of Walvis Bay proposes to permanently close Portion A (a Portion of Erf 3127) Kuisebmond, situated at the corner of Johanna Benson and Ongulumbashe Streets, as "Public Open Space."

There is already an informal road over Portion A of Erf 3127 Kuisebmond. Therefore, the proposed closure will regularise the existing situation and will subsequently turn the informal road into a formal road. In particular, the proposed Portion A of Erf 3127 Kuisebmond will enable the formal extension of Ongulumbashe Street (over Johanna Benson Street) to intersect with Kluisestrand Street.

The plans showing the locality and nature of the permanent closure lie open for inspection during office hours at the Municipality of Walvis Bay's noticeboard as well as at the Town Planning Office, Room 102, First Floor, Civic Centre.

Further take note that any person having objection to the proposed closure as set out above, may lodge such objection together with grounds therefor, with the Chief Executive Officer, Municipality of Walvis Bay, Private Bag 5017, Walvis Bay, in writing, before or on Friday, 29 October 2021 in accordance with Section 50(3)(a)(v) of the Local Authorities Act, 1992 (Act No. 23 of 1992), as amended.

**Applicant:** Municipality of Walvis Bay  
Private Bag 5017  
Walvis Bay  
0664 201 3348  
[townplanning@walvisbaycc.org.na](mailto:townplanning@walvisbaycc.org.na)

## Port Log

DAILY ARRIVALS						21-Oct
DATE	TIME	NAME	GRT	LOA	TYPE	AGENCY
21-Oct	11:00	GH MELTEMI	35878	213M	CONTAINER	MSC NAM
21-Oct	16:30	KYPARISSIA	48338	255M	CONTAINER	SHARAF
21-Oct	12:00	BOKA PEGASUS	7534	91M	TUG	LSS
21-Oct	19:30	ELENI T	40030	261M	CONTAINER	CMA CGM
21-Oct	17:00	TELIRI	8345	112M	CABLE SHIP	EXPRESS
22-Oct	13:00	MERAY GLYFADA	17431	170M	BULK	SGM
22-Oct	10:00	SEI WHALE	3835	94M	F/V	TRADE OCEAN
22-Oct	4:00	FOREVER CONFIDENCE	29063	180M	TANKER	SGM
22-Oct	1:00	MEDIVA STAR	2125	74M	F/V	TRADE OCEAN
23-Oct	6:00	ORITSELAJU 20	489	32M	TUG	NOVASHIP
23-Oct	12:00	NORTHERN JUPITER	94407	333M	CONTAINER	CMA CGM
24-Oct	5:00	CAVEMA STAR	2624	94M	F/V	TRADE OCEAN
24-Oct	6:00	VENUS I	4407	105M	F/V	TRADE OCEAN
24-Oct	6:00	MARIA DA PAZ	3978	101M	GENERAL CARGO	OLS
25-Oct	6:00	GREY WHALE	3840	94M	F/V	TRADE OCEAN
25-Oct	4:00	AFRICAN LILLY	19213	175M	BULK	OLS

**2021 Population & Housing PILOT CENSUS**  
(Selected Households Only)

**17 - 29 October 2021**

**CENSUS, What's Next?**

- Pilot Census** (17-29 October 2021)
- Pilot Post Enumeration Survey** (08 November - 17 December 2021)
- Population & Housing Census** (August 2022)

# Court

## Swakopmund Court Report



### Magistrate Court

**Paulus Tupuleni (31)**, appeared on a charge of theft. The matter was postponed to 2 February for continuation of trial. The accused is on bail.

**Lionel Sydney Kaffer (35)**, appeared on charges of attempted murder and assault with intent to do grievous bodily harm. The matter was postponed to 7 March 2022 for legal aid. The accused remain in custody.

**Sam Halupe (53)**, appeared on a charge of failure to pay maintenance. The matter was postponed to 25 November for other reasons. The accused have been warned.

**Martin Sebastian Ngoy (22)**, appeared on a charge of dealing in dependence producing substance and cocaine. The matter was postponed to 4 November for bail application continuation. The accused remain in custody.

**Showen Van Wyk (26)**, appeared on charged of attempted murder and assault on a member of the police. The matter was postponed to 5 November to be heard in the regional court. The accused remain in custody.

**Pieter Moses (38) and Jonas Amunyela Palema (54)**, appeared on a charge of housebreaking with intent to steal and theft. The matter was postponed to 2 February for further investigation. The accused remains in custody.

**Rigen Hoa-Khaob (30)**, appeared on a charge of rape. The matter was postponed to 29 November for legal aid. The accused remain in custody.

**Lazarus Daniel (28) and Ndilimeke Kadila (31)**, appeared on a charge of dealing in potentially dangerous producing substance. The matter was postponed to 19 January

2022 for further investigation. The accused remain in custody.

**Ebson Tjiwiyu (39)**, appeared on a charge of displaying a licence number not applicable to the vehicle. The accused was found guilty and sentenced to pay a fine of N\$1 000 or six months imprisonment term.

**Lotto Paulus (35)**, appeared on a charge of housebreaking with intent to steal and theft. The matter was postponed to 24 November for further investigation. The accused remain in custody.

**Paulus Tupuleni (34)**, appeared on a charge of theft. The matter was postponed to 5 November for judgement. The accused is on bail.

**Richard Fredericks (24) and Fillemon Kuwa (19)**, appeared on a charge of robbery. The matter was postponed to 18 January 2022 for plea and trial. The accused remain in custody.

**Samuel Gom-Khaiseb (34)**, appeared on a charge of robbery. The matter was postponed to 3 November for fixing of trial date. Accused is on bail.

**Iita Matias and Silas Sakaria (26)**, appeared on a charge of housebreaking with intent to steal and theft. The accused are at large, and a warrant of arrest was issued.

**Ricardo So Oabeb (27)**, appeared on a charge of robbery. The matter was postponed to 24 November for legal aid. The accused remain in custody.

**Andreas Sikindo Nguvu (23)**, appeared on a charge of housebreaking with intent to steal and theft. The matter was postponed to 26 October for plea. The accused remain in custody.

**Eugene Owoseb (28)**, appeared on charges of rape and combating an immoral act with a girl under sixteen. The matter was postponed to 8 November because the docket was not at court. The accused is on bail.

# Walvis Bay Court Report

**Michael Michael (28)**, Three counts of Housebreaking with the intent to commit the offence of rape (October 2021) The matter is postponed to 7 December 2021. Plea in terms of section 119

**Lulu Zhou (38)**, Removing minerals without a permit (April 2021) The matter is postponed to 15 February 2022. Plea and Trial.

**Mark Isaacs (29)**, Housebreaking with the intent to steal and theft (May 2021), The matter is postponed to 3 February 2022. Plea and Trial.

**Absalom Elias Joshua (40)**, Theft and Housebreaking with the intent to steal and theft (July 2021) The matter is postponed to 18 January 2022. Further investigation (Final Remand)

**Heinrich Smith (38), Nkuvi Engelberth (29)**, Housebreaking with the intent to steal and theft (July 2021) The matter is postponed to 17 February 2022. Plea and Trial.

**Efraim Hatutale (33)**, Possession of suspected stolen property, Assault common (August 2021) A warrant of arrest was issued. At large.

**Underaged boy (17)**, Possession of drugs and Crimen Injuria (September 2021) The matter is postponed to 7 December 2021. Plea.

**Frans Shiningajambwe (29)**, Refusal to provide breath specimen (October 2021) The matter is postponed to 6 December 2021. Plea.

**Chester Richards (27)**, Possession of drugs (October 2021) Sentenced.

**Leonard Martin (27)**, Housebreaking with the intent to steal and theft (October 2021) The matter is postponed to 2 December 2021. Further investigation.

**Jessica Okamaru (30)**, Assault common read with the Provisions of the Domestic Violence Act 4 of 2003. (October 2021) The matter is postponed to 1 December 2021. Further investigation.

**Jade Lee Moses (32)**, Assault by threat read with the Provisions of the Domestic Violence Act, Act 4 of 2003. (October 2021) The matter is postponed to 15 December 2021. Plea and Trial.

**Jessica Okamaru (30)**, Assault common read with the Provisions of the Domestic Violence Act 4 of 2003 (October 2021) The matter is postponed to 1 December 2021. Further Investigation.

**Jade-Lee Moses (32)**, Assault read with the Provisions of the Domestic Violence Act, Act 4 of 2003 (October 2021)

**Johannes Fillimon (27)**, Reckless of negligent driving (August 2019) The accused was found not guilty and was discharged.

**Geriseb Melton (25), Arnold Amporo (29)**, Housebreaking with the intent to steal and theft (October 2020) The matter is postponed to 30 November 2021. Trial partly heard. Continuation of trial.

**Virimunje Patjinda (23)**, Assault Common (February 2021) The matter is postponed to 25 November 2021. Legal Aid.

**Erastus Shatumbu (49), John Ndala (41)**, Theft (May 2021) The matter is postponed to 10 February 2022. Plea and Trial.

**Ashly Tanises (29)**, Assault by threat read with the Combating of the Domestic Violence Act (July 2021) The matter is postponed to 20 January 2022. Plea and Trial.

**Namibia Community Affairs  
and Human Rights Advocacy**  
CC/2018/05540

Find us at Langer Heinrich Crescent, Industrial Area,  
Walvis Bay, Namibia or  
Call us at 081 783 0786 / 081 669 5006 /  
081 211 5082 / 081 624 3410

**We offer the following:**

- \* Human Rights Advocacy
- \* Community Affairs Solutions
- \* Conflict Counselling
- \* Court Matters
- \* Labour Domestic Violence
- \* Translation
- \* Interpretation
- \* Consultancy
- \* Debt settlement and collection



### NOTICE FOR PUBLIC PARTICIPATION ENVIRONMENTAL IMPACT ASSESSMENT

Environam Consultants Trading cc (ECT) hereby gives notice to all potentially Interested and Affected Parties (I&APs) that an application will be made to the Environmental Commissioner in terms of the Environmental Management Act (No 7 of 2007) and the Environmental Impact Assessment Regulations (GN 30 of 6 February 2012) for the following:

**PROJECT NAME:** Proposed Terminal at Namport for Storage and Handling of Industrial Minerals, Base and Rare Metals

**PROJECT LOCATION:** Portion of Erf 1920 within the Walvis Bay Port

#### PROJECT DESCRIPTION:

The project is composed of the following amenities:  
· Storage and Handling of Industrial Minerals, Base and Rare Metals.

**PROPONENT:** BigenKuumba Terminal

#### REGISTRATION OF I&APs AND SUBMISSION OF COMMENTS:

All Interested and Affected Parties (I&APs) are hereby invited to register and submit their comments, concerns or questions in writing, kindly contact: Email: colin@environam.com

Fax: 061 258 470 or

Mobile: 0814584297 on or before **04 November 2021**.

**Date and venue of public meeting will be communicated to registered I&APs.**

**EAR-NOSE AND THROAT  
SPECIALIST... at the Coast**

**DR PIETER TROOST**  
M.B.,Ch.B.(University of Pretoria) FCS  
(SA)ORL (University of Cape Town) LMCC (Canada)

**DO YOU SUFFER FROM: ?**

- Chronic Sinus Problems
- Blocked Nose
- Ongoing Tonsil Problems
- Snoring
- Stop breathing while sleeping
- Ear Problems

**LET US HELP : Book a consultation...**  
061224349

**SWAKOPMUND: Cottage Mediclinic**  
**WALVIS BAY: Welwitchia Private Hospital**

**DR PIETER TROOST**

**facebook** [WWW.ENTNAMIBIA.COM](http://WWW.ENTNAMIBIA.COM)

**INVESTMENT OPTIONS  
THAT COST YOU LESS.  
COUNT ON OUR ADVICE.**

**RETIREMENT | INVESTMENTS | ADMINISTRATION**

**ALEXANDERFORBES**  
Securing your financial well-being

061 293 7000 | [IACNamibia@forbes.com](mailto:IACNamibia@forbes.com)

The following businesses are licensed financial services providers:

Alexander Forbes Investments Namibia Ltd (registration number 992228, NAMFISA Registration number 01A31100)

Alexander Forbes Financial Detention Namibia (Pty) Ltd Company (registration number 03/204, NAMFISA Registration number 99A/B/35)

**MINUTES OF THE MEETING BETWEEN WALVIS BAY MUNICIPALITY SENIOR OFFICIALS AND ENVIRONAM CONSULTANTS TRADING, HELD ON 15 DECEMBER 2021, REGARDING THE ENVIRONMENTAL ASSESSMENT FOR THE: PROPOSED BIGENKUUMBA PORT SERVICES TERMINAL AT NAMPORT FOR STORAGE AND HANDLING OF INDUSTRIAL MINERALS, BASE AND RARE METALS, WALVIS BAY, ERONGO REGION.**

**VENUE: VIRTUAL ZOOM MEETING**

**TIME: 11H00**

**PRESENT:**

C.P. Namene – Environam Consultants Trading (ECT)

V. Nangolo – Viromind

**INTRODUCTION**

In terms of Section 21 of the EIA Regulations a call for open consultation with all I&APs at defined stages of the EIA process is required. This entails participatory consultation with key stakeholders to provide an opportunity to comment on the proposed project. A meeting was convened for this purpose and was attended by representatives of the Municipality of Walvis Bay Senior Officials across various departments, and Environam Consultants Trading (CP Namene), and Viromind (V Nangolo).

**WELCOMING**

Mr. Namene welcomed everyone to the meeting and introduced the ECT team and Ms Nangolo of Viromind, the Air Quality Specialist on the project.

**ENVIRONMENTAL ASSESSMENT**

Mr. Namene provided a background on the proposed BigenKuumba Port Services Terminal at Namport for Storage and Handling of Industrial Minerals, Base and Rare Metals, and that an environmental clearance is required before such a development can proceed. He further explained the environmental assessment (EA) process and the reasons why EAs are carried out.

The officials were also informed about the public participation process that has taken place so far, including newspaper advertisements, public notices on site, and communication to other pre-identified Interested and Affected Parties. Information was given on the components of the development touching on aspects such as the locality, engineering services and access. After the presentation the floor was opened for questions and input from the officials.

## **INPUT**

Below is a summary of the input from the Walvis Bay Municipality officials:

### **Mr D Uushona – Environment Department**

Mr Burger raised a few pertinent issues related to the transportation route, key stakeholders, traffic, previous studies etc.

- He wanted to know which route will be used for the transportation of the products. I was explained that the proposed route is the one along the new Walvis Bay interchange into the C14, over the circle and onto Hanna Mupetami Street to the port.
- Key stakeholders have to be consulted such as Namport and the adjacent owners. For reaching out to nearby communities one could distribute information brochures to the residents by hand. Advice was given to make contact with Mr Burger, a resident of that community.
- Is the EIA only focussing on the area allocated to the proponent? The answer was in the affirmative.
- There is a potential impact on traffic into and out of town. It is strongly recommended to engage the municipal traffic division, led by Ebben Platt.
- Other EIA's have been carried out for developments in the vicinity, for example the one for the Botswana Dry Port. It is advisable for the consultants to familiarise themselves with the content of these studies.

### **L Hailaula – Environment Department**

- Emphasis on consulting previous studies done in the port area as part of literature review.
- On indication that the consultant will require a "consent letter" from the municipality to accompany the application for an Environmental Clearance Certificate from the municipality, it was indicated that the municipality will be in a better position to consider that once the report is ready and the issues raised during this consultation have been addressed.

### **Mr Dreyer – Health Department**

- It is critical to engage the municipal traffic department to determine the most appropriate and safe route to avoid experiences of the effects of mishandling hazardous substances such as the Ammonia Nitrate incident.
- Will all commodities be transported in bulk bags? The products will be stored in bulk bags as well as containerized storage.
- It is advisable that activities are restricted to normal working hours.

## **CONCLUSION**

After the interactive session information on the way forward was shared with the attendees, in terms of the timeframe left for additional input before the comment period ends.

The meeting was closed off and officially adjourned.



**MINUTES OF THE MEETING BETWEEN WALVIS BAY MUNICIPALITY SENIOR TRAFFIC OFFICERS AND ENVIRONAM CONSULTANTS TRADING, HELD ON 27 JANUARY 2022, REGARDING THE ENVIRONMENTAL ASSESSMENT FOR THE: PROPOSED BIGENKUUMBA PORT SERVICES TERMINAL AT NAMPORT FOR STORAGE AND HANDLING OF INDUSTRIAL MINERALS, BASE AND RARE METALS, WALVIS BAY, ERONGO REGION.**

**VENUE: MUNICIPAL TRAFFIC OFFICES**

**PRESENT:**

C.P. Namene – Environam Consultants Trading (ECT)  
C. Ita – Environam Consultants Trading (ECT)  
Ebben Platt – Walvis Bay Municipality Traffic Department  
Asser Shikuniva - Walvis Bay Municipality Traffic Department  
Clifton Jacob - Walvis Bay Municipality Traffic Department

**INTRODUCTION**

In terms of Section 21 of the EIA Regulations a call for open consultation with all I&APs at defined stages of the EIA process is required. This entails participatory consultation with key stakeholders to provide an opportunity to comment on the proposed project. A meeting was convened for this purpose and was attended by representatives of the Municipality of Walvis Bay Senior Traffic Officers and Environam Consultants Trading.

**WELCOMING**

Mr. Namene welcomed everyone to the meeting and introduced the ECT team.

**ENVIRONMENTAL ASSESSMENT**

Mr. Namene provided a background on the proposed BigenKuumba Port Services Terminal at Namport for Storage and Handling of Industrial Minerals, Base and Rare Metals, and that an environmental clearance is required before such a development can proceed. He further explained the environmental assessment (EA) process and the reasons why EAs are carried out.

The officers were also informed about the public participation process that has taken place so far, including newspaper advertisements, public notices on site, and communication to other pre-identified Interested and Affected Parties. Information was given on the components of the development touching on aspects such as the locality, engineering services and access. After the presentation the floor was opened for questions and input from the officers.

## **INPUT**

Below is a summary of the input from the Walvis Bay Municipality Traffic Officers:

- Walvis Bay is a harbour town and therefore the large movement of cargo is inevitable, as it is an important part of the Walvis Bay economy. The port is thus a very busy area.
- A question was asked about the type of trucks and frequency of movement. The response was that we are looking at approximately 4 super link trucks per day.
- The B2 is overwhelmed by the movement of trucks therefore the C14 is the only viable preferred entrance into Walvis Bay town for cargo trucks, where it crosses the circle into Hannah Mupetami Street towards the harbour.
- There is no waiting area at the harbour as trucks are pulling up, this leads to an overflow into the streets, causing great inconvenience.
- The truck operators have to consider where their drivers will overnight as there are no formal overnight facilities available although some companies have their own yards.
- It will be a challenge if the development is going to operate for 24hours, as was the case with the Botswana Dry Port.
- Drivers that convey dangerous good have to have their licences endorsed.
- Drivers have to comply to local traffic laws and regulations. Past experiences have shown that foreign drivers come with their passports into town, commit offences and then leave without facing the law. Therefore, it's important to know how long the drivers will be based here.

## **CONCLUSION**

After the interactive session information on the way forward was shared with the Officers, in terms of the timeframe left for additional input before the comment period ends.

The meeting was closed off and officially adjourned.