



REPUBLIC OF NAMIBIA
MINISTRY OF ENVIRONMENT, FORESTRY AND TOURISM
OFFICE OF THE ENVIRONMENTAL COMMISSIONER

ENVIRONMENTAL CLEARANCE CERTIFICATE
ISSUED

In accordance with Section 37(2) of the Environmental
Management Act (Act No. 7 of 2007)

TO

Okorusu Fluorspar (Pty) Ltd
P O Box 81307, Windhoek

TO UNDERTAKE THE FOLLOWING LISTED ACTIVITY

**PROPOSED EXPLORATION ACTIVITIES ON EXCLUSIVE PROSPECTING
LICENSE (EPL) 5046, OTJOZONDJUPA REGION**

[Signature]
25 JUN 2021
ENVIRONMENTAL COMMISSIONER
PUBLIC OF NAMIBIA

Issued on the date: 2021-06-22
Expires on this date: 2024-06-22

(See conditions printed over leaf)

This certificate is printed without erasures or alterations



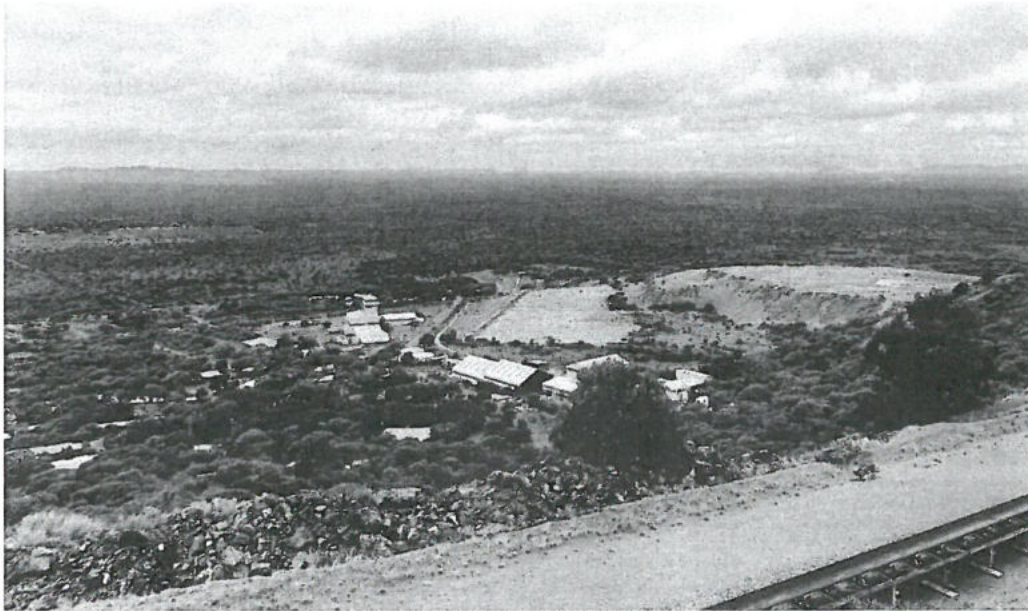
CONDITIONS OF APPROVAL

1. This environmental clearance is valid for a period of 3 (three) years, from the date of issue unless withdrawn by this office
2. This certificate does not in any way hold the Ministry of Environment and Tourism accountable for misleading information, nor any adverse effects that may arise from these activities. Instead, full accountability rests with the proponent and its consultants
3. This Ministry reserves the right to attach further legislative and regulatory conditions during the operational phase of the project
4. All applicable and required permits are obtained and mitigation measures stipulated in the EMP are applied particularly with respect to management of ecological impacts.
5. Strict compliance with national heritage guidelines and regulations is expected throughout the life-span of the proposed activity, therefore any new archaeological finds must be reported to the National Heritage Council for appropriate handling of such.
6. A six monthly report on project progress and environmental management profile, starting from date of commencement of operations, must be submitted by the Proponent to Office of Environmental Commissioner.

COPY
COPY

BI-ANNUAL ENVIRONMENTAL REPORT FOR OKORUSU FLUORSPAR (PTY) LTD

MINING LICENCE (ML) 90 & EPL 5046



Okorusu Mine village, tailings (15.02.2022)

PERIOD:

JULY TO DECEMBER 2021

Submitted to:

The Executive Director
Ministry of Environment, Forestry
and Tourism
Private Bag 13306
Windhoek

Prepared by:

Geokey on behalf of
Okorusu Fluorspar
P.O. Box 1236
Otjiwarongo

MINISTRY OF ENVIRONMENT, FORESTRY AND TOURISM
DIRECTORATE OF ENVIRONMENTAL AFFAIRS

24 FEB 2022

A handwritten signature in blue ink, appearing to be 'J. L. L. L.', is written over a blue rectangular stamp. The stamp contains the text 'MINISTRY OF ENVIRONMENT, FORESTRY AND TOURISM' and 'DIRECTORATE OF ENVIRONMENTAL AFFAIRS'.

Table of Contents

1. SUMMARY.....	3
2. CONTACT DETAILS.....	3
3. PROGRESS REPORT ON CURRENT ACTIVITIES.....	3
3.1 Metallurgical Research and Development.....	3
3.2 Construction Materials, Industrial Minerals and Exploration.....	3
3.3 Environmental Impact Assessment (EIA) Report & Environmental Management Plan (EMP).....	5
3.4 Monitoring & Auditing.....	5
3.5 Maintenance.....	5
3.6 Baseline Studies.....	6
3.7 Mining.....	6
3.8 Processing Activities.....	6
3.9 New Graphite Tailings Storage Facility.....	6
3.10 Infrastructure Development.....	7
4. ENVIRONMENTAL PROGRAMMES.....	7
4.1 Stakeholder Consultation / Communication Management Programme.....	7
4.2 Safety & Security Management Programme.....	8
4.3 Surface Water Management Programme.....	8
4.4 Groundwater Management Programme.....	9
4.5 Air Quality Management Programme.....	9
4.6 Noise & Vibration Management Programme.....	9
4.7 Biodiversity Management Programme.....	10
4.8 Visual Management Programme.....	10
4.9 Archaeology Management Programme.....	10
4.10 Traffic Management Programme.....	10
4.11 Social & Economic Management Programme.....	10
4.12 Resource Management Programme.....	11
4.13 Soil Management Programme.....	11
4.14 Waste Management Programme.....	12

Table of Figures

Figure 1. Images the aggregate and magnetite sources and stockpiling.....	4
Figure 2. The graphite tailings facility – no additional have been added since December 2018	7
Figure 3. Division of areas for dedicated use by the JV (referred to here as Gecko Graphite), Okorusu, and shared infrastructure	8
Figure 4. Images of surface water containment and diversion.	9
Figure 5. Images of water supply and monitoring points at Okorusu wellfield.	11

**BI-ANNUAL ENVIRONMENTAL REPORT FOR OKORUSU FLUORSPAR (PTY) LTD:
ACTIVITIES ON MINING LICENCE (ML) 90 & EPL 5046**

1. SUMMARY

This report covers the environmental aspects of the activities pertaining to the operations of Okorusu Fluorspar (Pty) Ltd on ML 90 and EPL 5046 for the period July to December 2021.

2. CONTACT DETAILS

Table 1. Details of ML / EPL holder

ML 90 and EPL 5046	Licence Holder Details
Name of Holder	Okorusu Fluorspar (Pty) Ltd.
Chief Operations Officer	Mr Michael Gibson
Contact Details	Tel: 067 - 305 404 Fax: 067 - 305 403 E-mail Address: mike.gibson@genet.co.za
Postal / Registered Address	Okorusu Fluorspar (Pty) Ltd, P.O. Box 1236, Otjiwarongo

3. PROGRESS REPORT ON CURRENT ACTIVITIES

3.1 Metallurgical Research and Development

Metallurgical Research & Development (R & D) continues as follows:

Otjitanga Rare Earth Element Project:

A pilot plant for testing the processes for concentrating bastnaesite rare earths mineralisation from Gecko Namibia's Otjitanga project has been established during 2020. The plant comprises crushing, screening and a magnetic separation. Only limited test work on the material has been conducted to date. No test work was done during this reporting period.

3.2 Construction Materials, Industrial Minerals and Exploration

Magnetite:

No magnetite exploration work was carried out during the 2nd semester of 2021. No magnetite was extracted or processed during this period. Magnetite stocks remain as per figures reported in the end of 2019. Please refer to Figure 1 below.

Aggregates:

Okorusu has repaired and re-commissioned the static crushing plant on top of the mountain. Fenite waste rock from the rock dumps is used for crushing and screening to produce aggregate material. (See Figure 1 below). During the reporting period no production of aggregate has taken place.

Fluorspar:

The exploration, mining and processing of fluorspar (including metspar) has still not resumed at the site.

COPY

BI-ANNUAL ENVIRONMENTAL REPORT FOR OKORUSU FLUORSPAR (PTY) LTD

MINING LICENCE (ML) 90 & EPL 5046



Okorusu Mine village, tailings (15.02.2022)

PERIOD:

JANUARY TO JUNE 2022

Submitted to:

The Environmental Commissioner
Ministry of Environment, Forestry and Tourism
Private Bag 13306
Windhoek

Prepared by:

Geokey on behalf of
Okorusu Fluorspar
P.O. Box 1236
Otjiwarongo

MINISTRY OF ENVIRONMENT, FORESTRY AND TOURISM
DIRECTORATE OF ENVIRONMENTAL AFFAIRS
03 AUG 2022
Tel: 061 284 2701
RECEIVED 2
Signature:.....

COPY

BI-ANNUAL ENVIRONMENTAL REPORT FOR OKORUSU FLUORSPAR (PTY) LTD

MINING LICENCE (ML) 90 & EPL 5046



Okorusu Mine village, tailings (15.02.2022)

PERIOD:
JULY TO DECEMBER 2022

MINISTRY OF ENVIRONMENT, FORESTRY AND TOURISM
DIRECTORATE OF ENVIRONMENTAL AFFAIRS
31 JAN 2023
TEL: 061 263 2701
RECEIVED 2
Signature: <i>[Handwritten Signature]</i>

Submitted to:

The Environmental Commissioner
Ministry of Environment, Forestry and Tourism
Private Bag 13306
Windhoek

Prepared by:

Geokey on behalf of
Okorusu Fluorspar
P.O. Box 1236
Otjiwarongo

TABLE OF CONTENTS

1. SUMMARY	3
2. CONTACT DETAILS	3
3. PROGRESS REPORT ON CURRENT ACTIVITIES	3
3.1 Metallurgical Research and Development	3
3.2 Construction Materials, Industrial Minerals and Exploration	4
3.3 Environmental Impact Assessment (EIA) Report & Environmental Management Plan (EMP).....	6
3.4 Monitoring & Auditing	6
3.5 Maintenance	6
3.6 Baseline Studies	7
3.7 Mining	7
3.8 Processing Activities	7
3.9 New Graphite Tailings Storage Facility.....	7
3.10 Infrastructure Development.....	9
4. ENVIRONMENTAL PROGRAMMES	9
4.1 Stakeholder Consultation / Communication Management Programme.....	9
4.2 Safety & Security Management Programme.....	10
4.3 Surface Water Management Programme	10
4.4 Groundwater Management Programme	11
4.5 Air Quality Management Programme.	11
4.6 Noise & Vibration Management Programme	12
4.7 Biodiversity Management Programme.....	12
4.8 Visual Management Programme	12
4.9 Archaeology Management Programme	13
4.10 Traffic Management Programme	13
4.11 Social & Economic Management Programme.....	13
4.12 Resource Management Programme	13
4.13 Soil Management Programme	14
4.14 Waste Management Programme	14

COPY

BI-ANNUAL ENVIRONMENTAL REPORT FOR OKORUSU FLUORSPAR (PTY) LTD

MINING LICENCE (ML) 90 & EPL 5046



Okorusu Mine

PERIOD:

JANUARY TO JUNE 2023

Submitted to:

The Environmental Commissioner
Ministry of Environment, Forestry and Tourism
Private Bag 13306
Windhoek

Prepared by:

Geokey on behalf of
Okorusu Fluorspar
P.O. Box 1236
Otjiwarongo



COPY

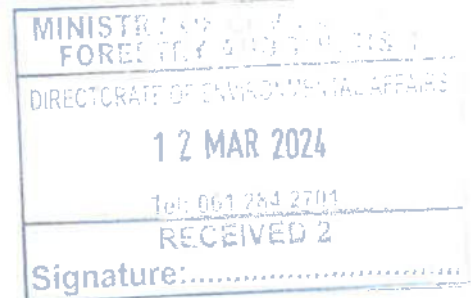
BI-ANNUAL ENVIRONMENTAL REPORT FOR OKORUSU FLUORSPAR (PTY) LTD

MINING LICENCE (ML) 90 & EPL 5046



Okorusu Mine

PERIOD:
JULY TO DECEMBER 2023



Submitted to: The Environmental Commissioner
Ministry of Environment, Forestry and Tourism
Private Bag 13306
Windhoek

Prepared by: Geokey on behalf of
Okorusu Fluorspar
P.O. Box 1236
Otjiwarongo

TABLE OF CONTENTS

- 1. SUMMARY 3**
- 2. CONTACT DETAILS 3**
- 3. PROGRESS REPORT ON CURRENT ACTIVITIES 4**
 - 3.1 Metallurgical Research and Development..... 4
 - 3.2 Construction Materials, Industrial Minerals and Exploration 4
 - 3.3 Environmental Impact Assessment (EIA) Report & Environmental Management Plan (EMP)..... 6
 - 3.4 Monitoring & Auditing..... 6
 - 3.5 Maintenance 6
 - 3.6 Baseline Studies 7
 - 3.7 Processing Activities 7
 - 3.8 Graphite Tailings Storage Facility 8
 - 3.9 Infrastructure Development..... 9
- 4. ENVIRONMENTAL PROGRAMMES 10**
 - 4.1 Stakeholder Consultation / Communication Management Programme 10
 - 4.2 Safety & Security Management Programme 10
 - 4.3 Surface Water Management Programme..... 10
 - 4.4 Groundwater Management Programme..... 11
 - 4.5 Air Quality Management Programme 11
 - 4.6 Noise & Vibration Management Programme 11
 - 4.7 Biodiversity Management Programme 11
 - 4.8 Visual Management Programme..... 12
 - 4.9 Archaeology Management Programme..... 12
 - 4.10 Traffic Management Programme..... 12
 - 4.11 Social & Economic Management Programme 13
 - 4.12 Resource Management Programme 13
 - 4.13 Soil Management Programme 14
 - 4.14 Waste Management Programme 14