

Although mineral exploration is very costly and risky, environmentally friendly exploration is a cornerstone, yet the mineral exploration process must never be at the expense of people or the environment. Nami Geological Techniques (Pty) Ltd believes that social and environmental responsibility is a prerequisite for providing a conducive environment for mineral exploration and future mining activities. Impala Consulting cc was appointed by the proponent to undertake an Environmental Assessment (EA) and Environmental Management Plan (EMP) for the mineral exploration project. Figure 2 below shows the mineral occurrences within the area.

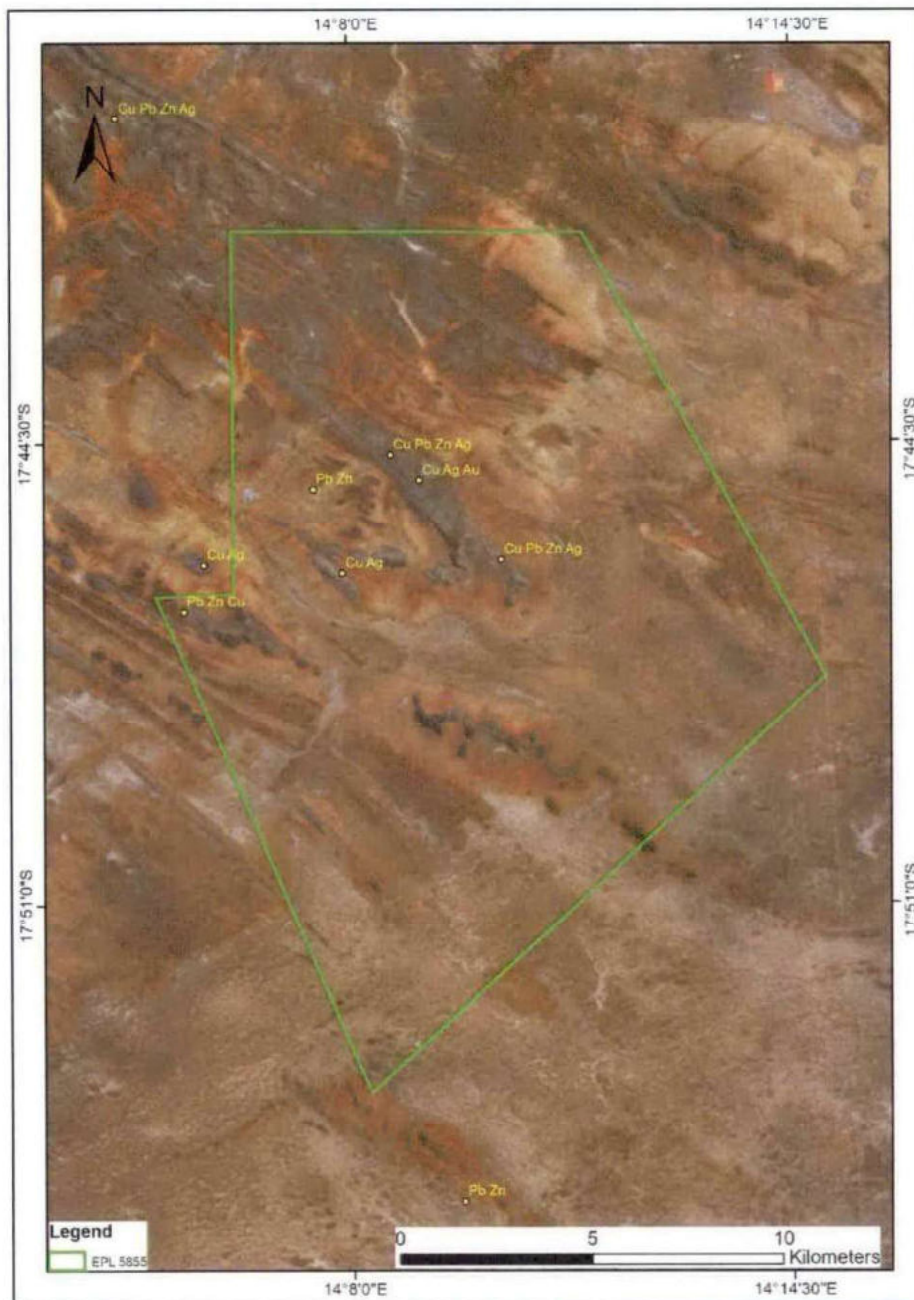


Figure 2 A map showing the mineral occurrences within the exploration licence.

## 1.2 Project Location

The mineral licence is located 43 km northeast of Opuwo and occurs on stateland within the Kunene Region. The coordinates for the centre of the licence are 14°9'22,191"E and 17°46'46,109"S.

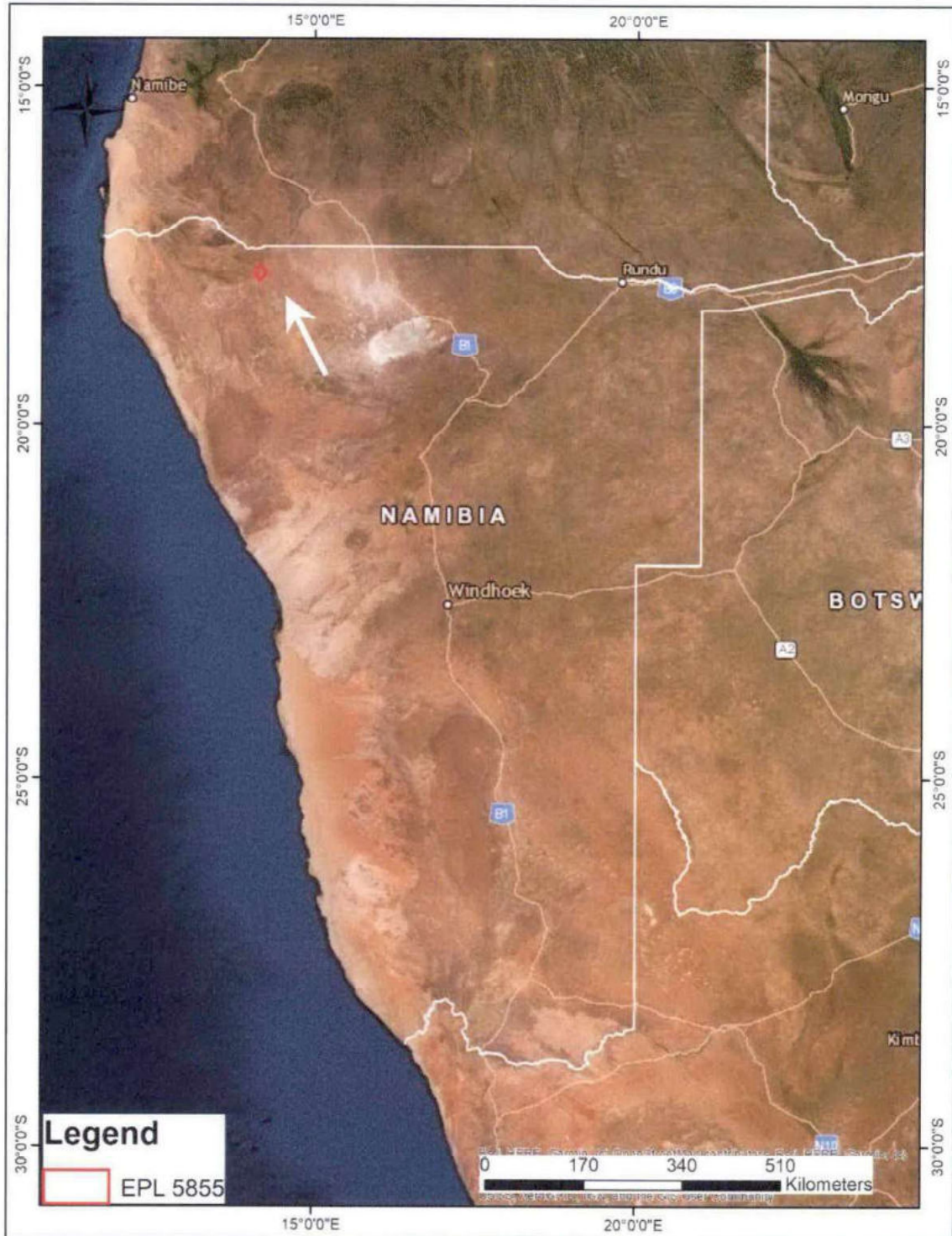


Figure 3 Locality map of the exclusive prospecting licence area