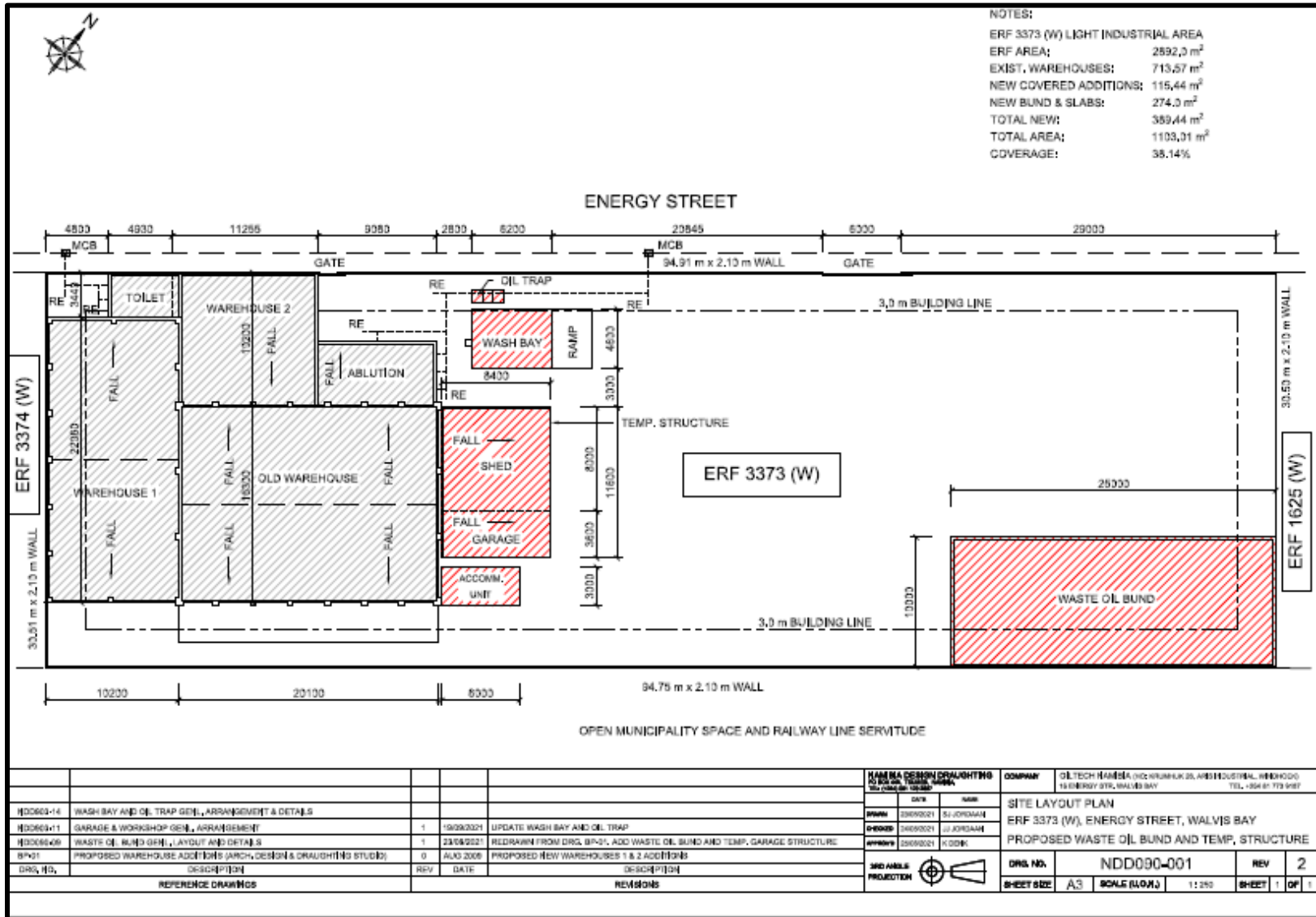


LOCALITY MAP – ERF 3373



PROPOSED SITE LAYOUT (WASTE OIL STORAGE FACILITY)



				HANDELA DESIGN DRAUGHTING <small>15 BLOEMFONTEIN, 12000, 08004</small>		COMPANY <small>OLTECH HANDELA (Pty) LTD INDUSTRIAL, HENKODD 15 ENERGY STG, WALVIS BAY TEL: +264 07 773 997</small>	
				DATE	NAME	SITE LAYOUT PLAN	
#02603-14	WASH BAY AND OIL TRAP GENL. ARRANGEMENT & DETAILS					ERF 3373 (W), ENERGY STREET, WALVIS BAY	
#02603-11	GARAGE & WORKSHOP GENL. ARRANGEMENT	1	19/09/2021	UPDATE WASH BAY AND OIL TRAP	SI JORDAAN	PROPOSED WASTE OIL BUND AND TEMP. STRUCTURE	
#02604-09	WASTE OIL BUND GENL. LAYOUT AND DETAILS	1	23/09/2021	REDRAWN FROM DRG. B/F-01, ADD WASTE OIL BUND AND TEMP. GARAGE STRUCTURE	SI JORDAAN		
B/F-01	PROPOSED WAREHOUSE ADDITIONS (ARCH. DESIGN & DRAUGHTING STUDY)	0	AUG 2008	PROPOSED NEW WAREHOUSES 1 & 2 ADDITIONS	KODDE		
DRG. NO.	DESCRIPTION	REV	DATE	DESCRIPTION			
REFERENCE DRAWINGS				REVISIONS			
						DRG. NO.	NDD090-001
						REV	2
						SHEET SIZE	A3
						SCALE (LOW.)	1:250
						SHEET	1 OF 1