

Maps of Mining Claim 68945

Location

The Mining Claim (MC) 68945 is located about 80 km northeast of Swakopmund, 50 km southeast of Henties Bay, approximately 65 km northwest of Arandis (**Figure 1**). It lies on communal land, within the #Gaingu Communal Conservancy in the Daures Constituency, and about 20 km northwest of the Trekkopje Mine as seen in **Figure 2**. The mining claim is on the part of the constituency which has no human occupation. The closest community is in Marenica, located about 20 km to the east, and the Farms Hakskeen, Sukses and Trekkopje all in excess of 20 km as seen in **Figure 3**. The approximate coordinates of the mining claim are shown in **Table 1** below.

Table 1: Approximate GPS Coordinates of the corners of Mining Claim 68945.

Mining Claim	Latitude	Longitude
68945	-22.022863°	14.717340°
	-22.018967°	14.722520°
	-22.020849°	14.724181°
	-22.024582°	14.720124°

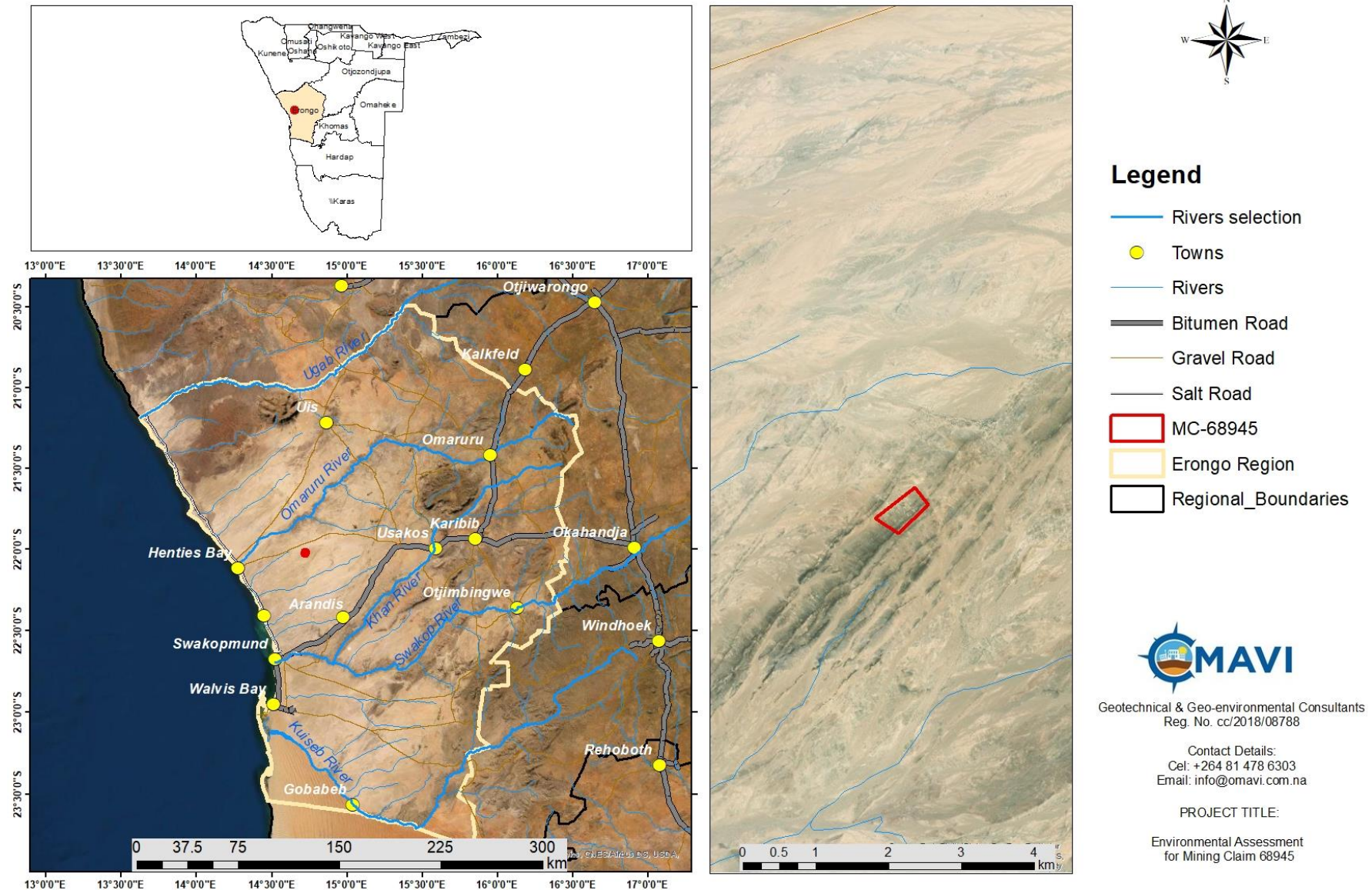


Figure 1: The location of Mining Claim 68945, relative to neighbouring major towns of Swakopmund, Henties Bay, and Arandis in the Erongo Region

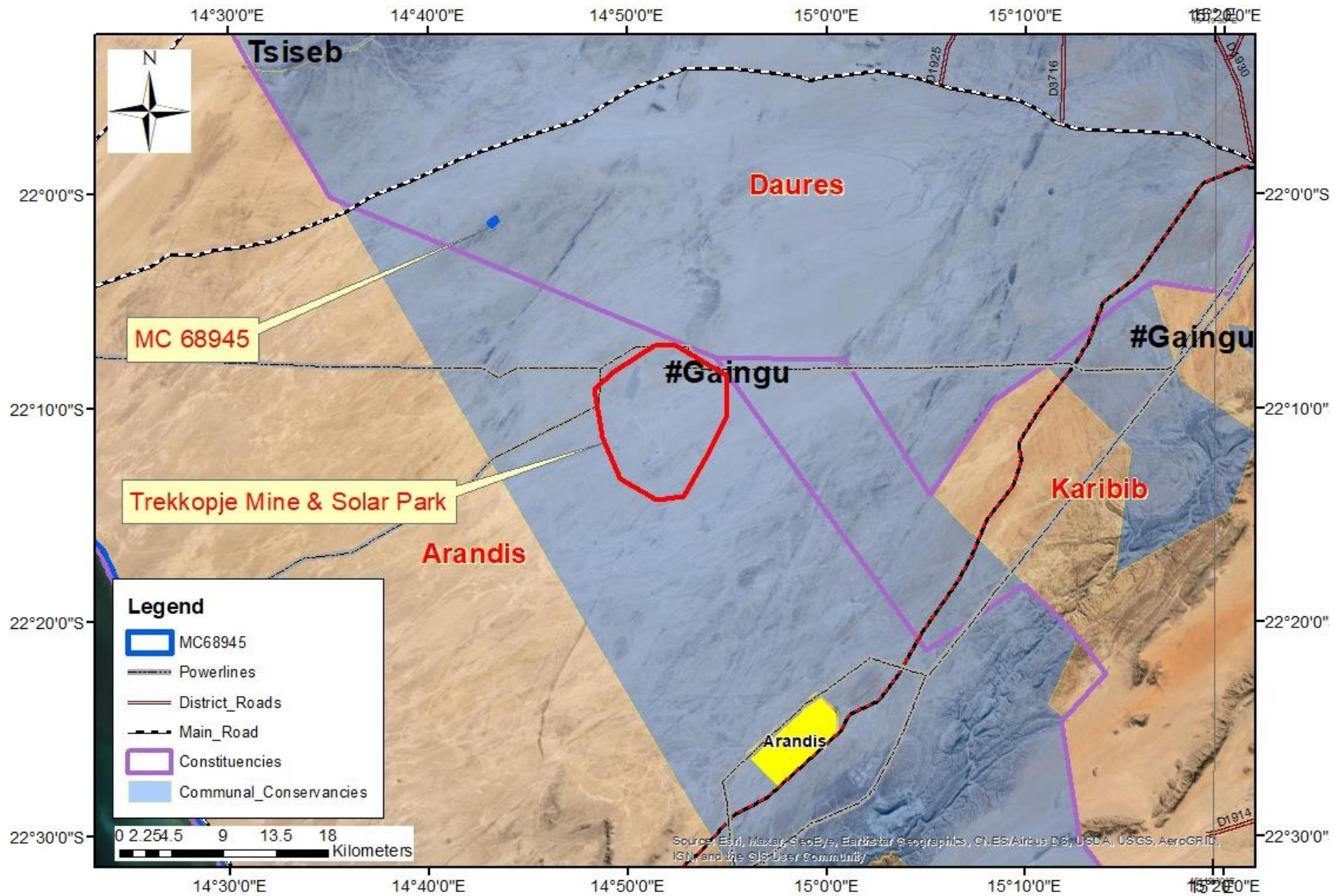


Figure 2: The location of MC 68945 on communal land, within the #Gaingu Communal Conservancy in the Daures Constituency, about 20 km northwest of the Trekkopje Mine and Solar Farm.

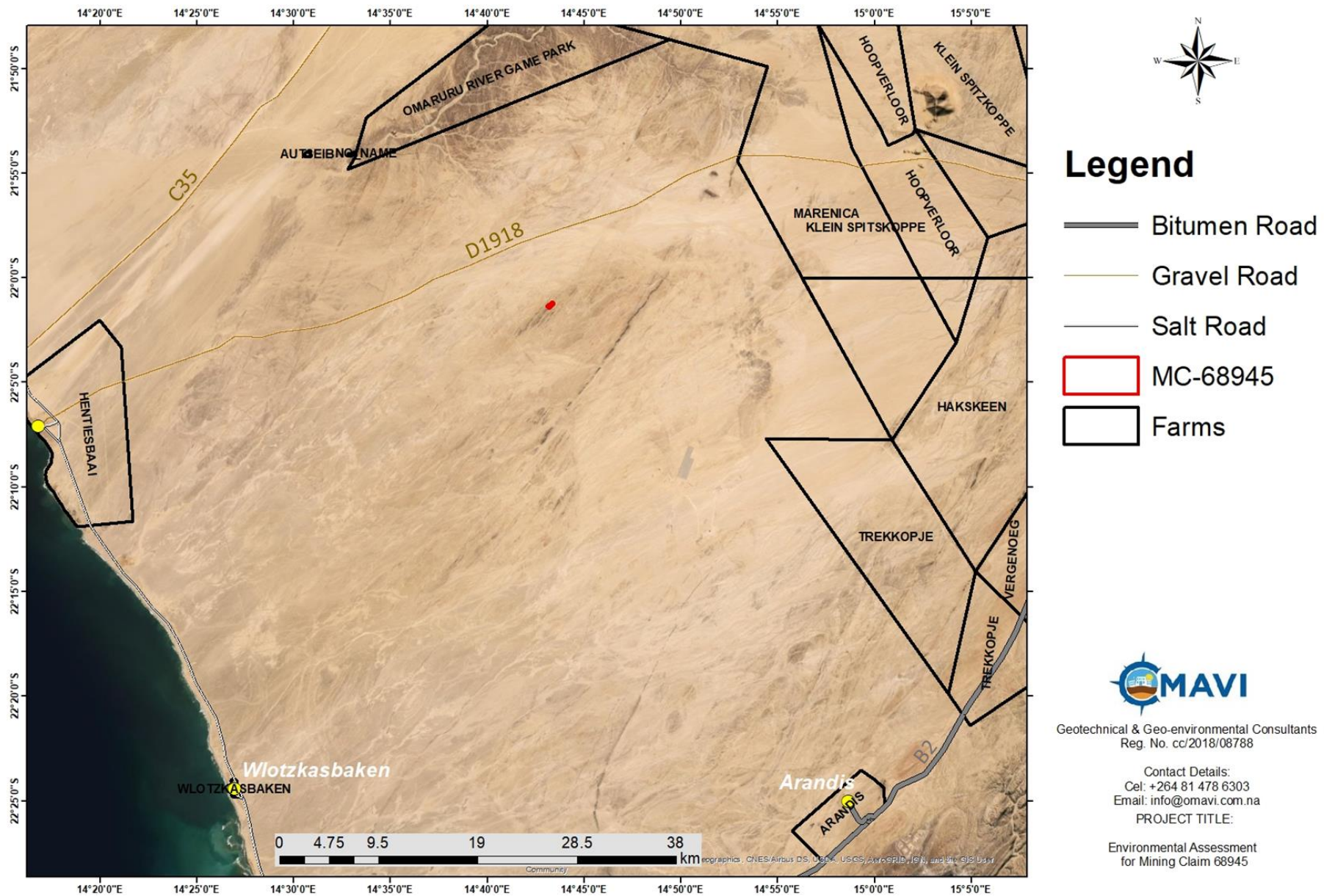


Figure 3: The location of MC-68945 relative to the closest farms and communities.