

**A BACKGROUND INFORMATION
DOCUMENT ON THE ENVIRONMENTAL
IMPACT ASSESSMENT FOR MINING
ACTIVITIES ON MINING CLAIM 73434**



Impala Environmental Consulting cc

Unit 89 Auas Hill Village
Auas Blick, Windhoek

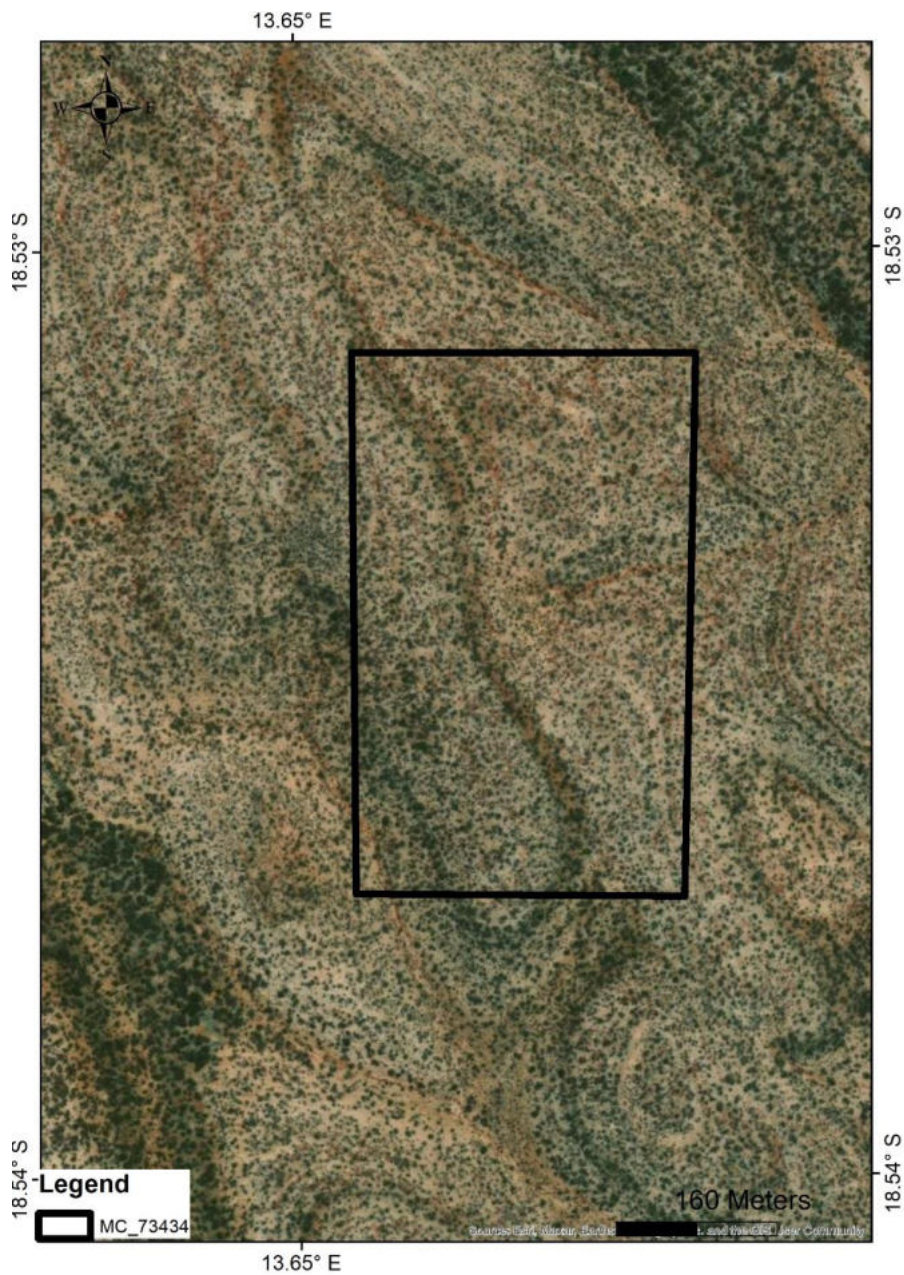
0856630598
public@impalac.com



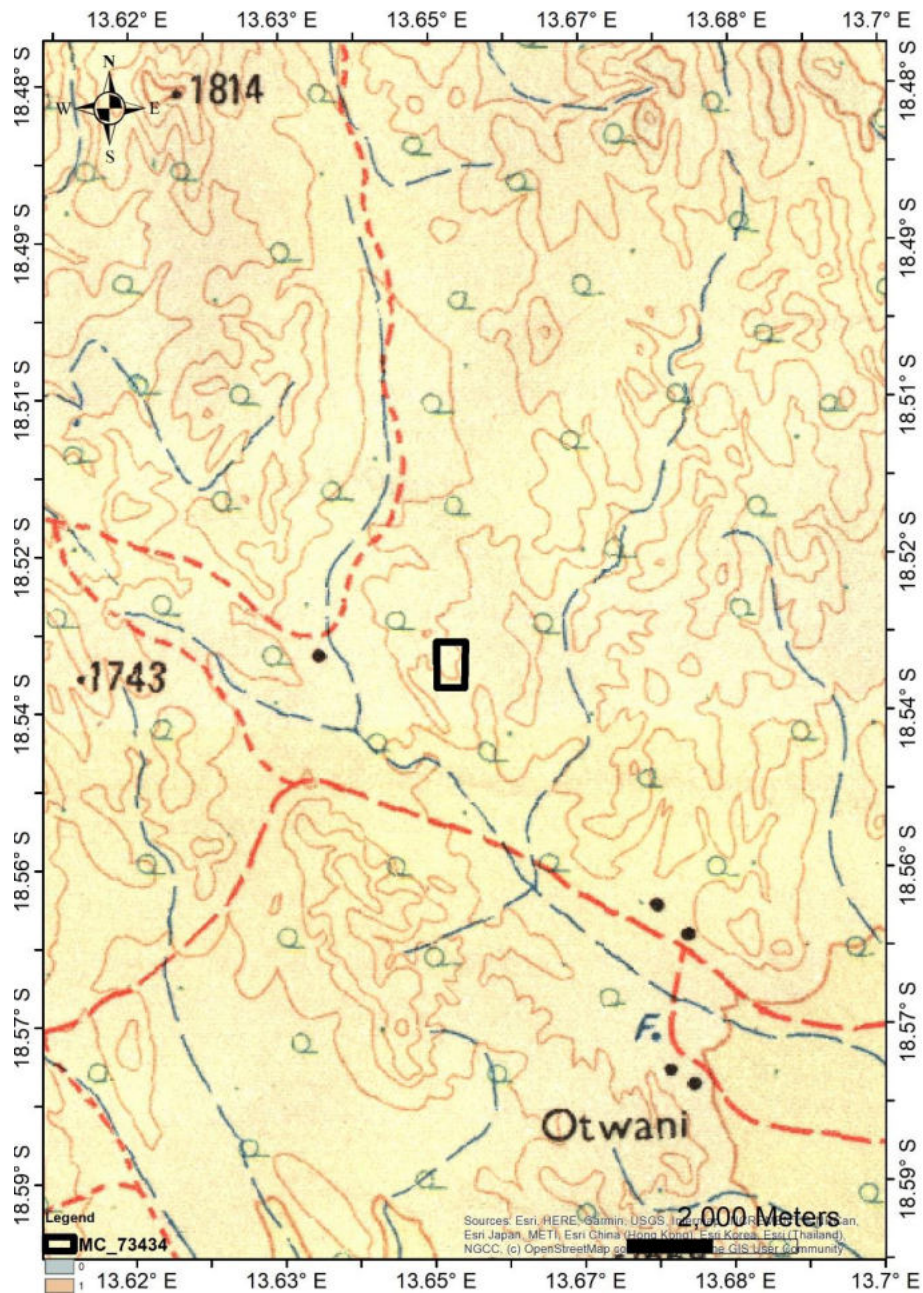
1. Introduction

1.1 Purpose of this document

The purpose of this Background Information Document (BID) is to provide Interested and Affected Parties (IAPs) with background information about the proposed project and introduce the Environmental Impact Assessment (EIA) process to be followed. It also aims to inform IAPs on how to fully participate in the EIA and encourages response to documents distributed for review and active attendance at meetings.



1.2 Overview



The proponent, Elizabeth Uaningira Nderura, has applied for a mining claim, namely 73434 with the Ministry of Mines and Energy. The applicant intends to mine Base and Rare Metals and Semi-Precious Stones. Impala Environmental Consulting cc was appointed by the proponent to undertake an Environmental Assessment (EA) and Environmental Management Plan (EMP) for the tenement. The map above shows the localities of the mining claim.

1.3 Location

The mining claim is located about 62 km southwest of Opuwo within the Kunene Region. The coordinates for the centre of the mining claim is 13.653429 and -18.536251. The mining claim is 17.9983 hectares in size.

1.4 Need for the Project

The proponent has identified the need to provide Base and Rare Metals and Semi-Precious Stones for both local and the international market. The surrounding area consists of many pegmatite rock units which can be mined for financial gain, employment creation and for developing the local community. An alternative to the proposed mining activity would be to allocate the land-usage to other income generating activities such as tourism and farming.

1.5 Potential Impacts

- Impacts on Socio-Economic
- Visual Impacts
- Impacts on Flora and Fauna
- Use of Natural Resources
- Generation of Solid Waste
- Noise
- Dust Generation

1.6 Environmental Assessment Requirements

The Environmental Regulations procedure (GN 30 of 2012) stipulates that no mining and quarrying activities may be undertaken without an environmental clearance certificate. As such, an environmental clearance certificate must be applied for in accordance with regulation 6 of the 2012 environmental regulations. It is imperative that the environmental proponent must conduct a public consultation process in accordance with regulation 21 of the 2012

environmental procedure, produce an environmental scoping report and submit an Environmental Management Plan for the proposed quarrying activities.

1.7 Public Participation Process

The PPP aims to inform a wide range of IAPs about the proposed development and the environmental process to be followed.

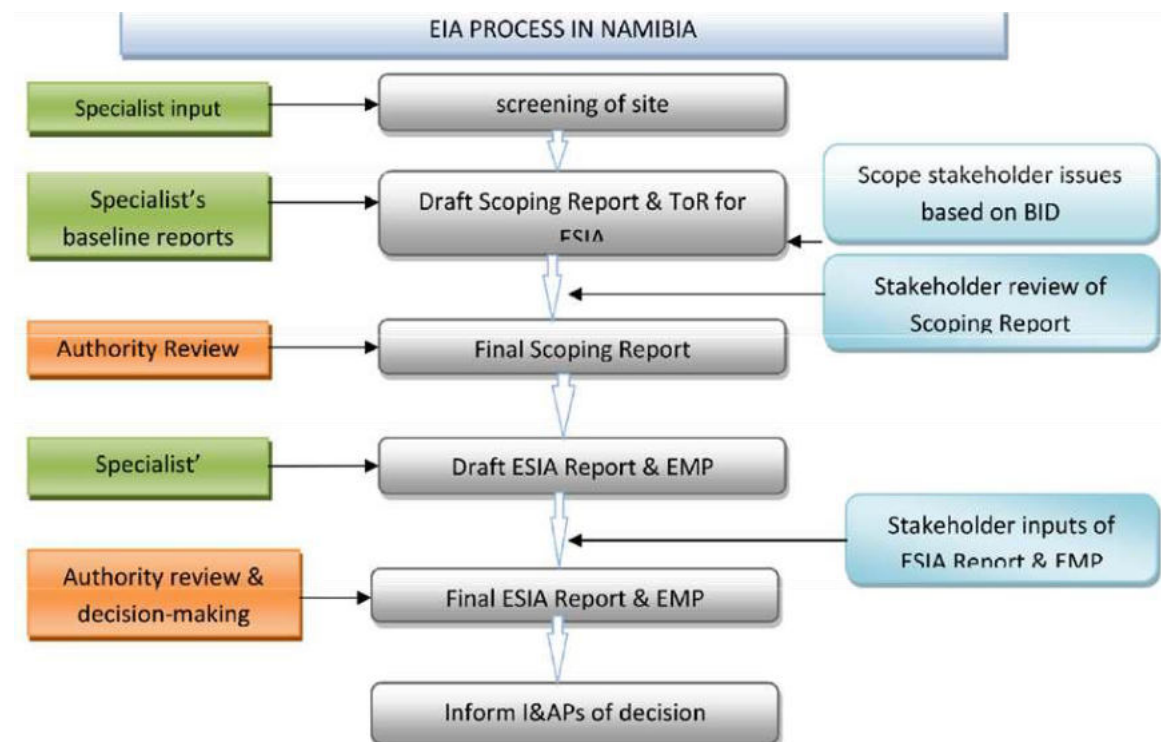


Figure 1 EIA process flow diagram

It is a tool to allow the public to exchange Information and to express their views and concerns on the proposed development for which the EIA is being conducted. The PPP assists in identifying potential issues and concerns that need to be addressed in the impact assessment by highlighting relevant information to be included in the assessment. PPP enables more accurate and descriptive analysis and helps to focus and enhance decision-making. The EIA will be open and transparent to the public through this process with all registered IAPs

continuously updated on events throughout the process. All contributions from IAPs must be fully documented, evaluated and responded to in the EIA.

1.8 How to get involved as an Interested and Affected Party

The public is invited to register as an IAP and take part in the PPP through:

- Media Notices placed in newspapers
- Distribution of the BID Site notice boards at the Kunene Regional Council Office.
- Public meeting, if necessary
- Submission of comments on the media notices, BID and Draft Scoping and Impact Assessment Reports.

IAPs may forward their written comments along with their name, contact details and an indication of any direct business, financial, personal or other interest which they have in the application by post or email to:

Mr Severinus Andjamba

Impala Environmental Consulting cc

Email: public@impalac.com

Address: Unit 89, Avas Hill Village, Avas Blick

Postal Address: P.O Box 29532, Windhoek

Tel: 0856630598

Website: www.impalac.com