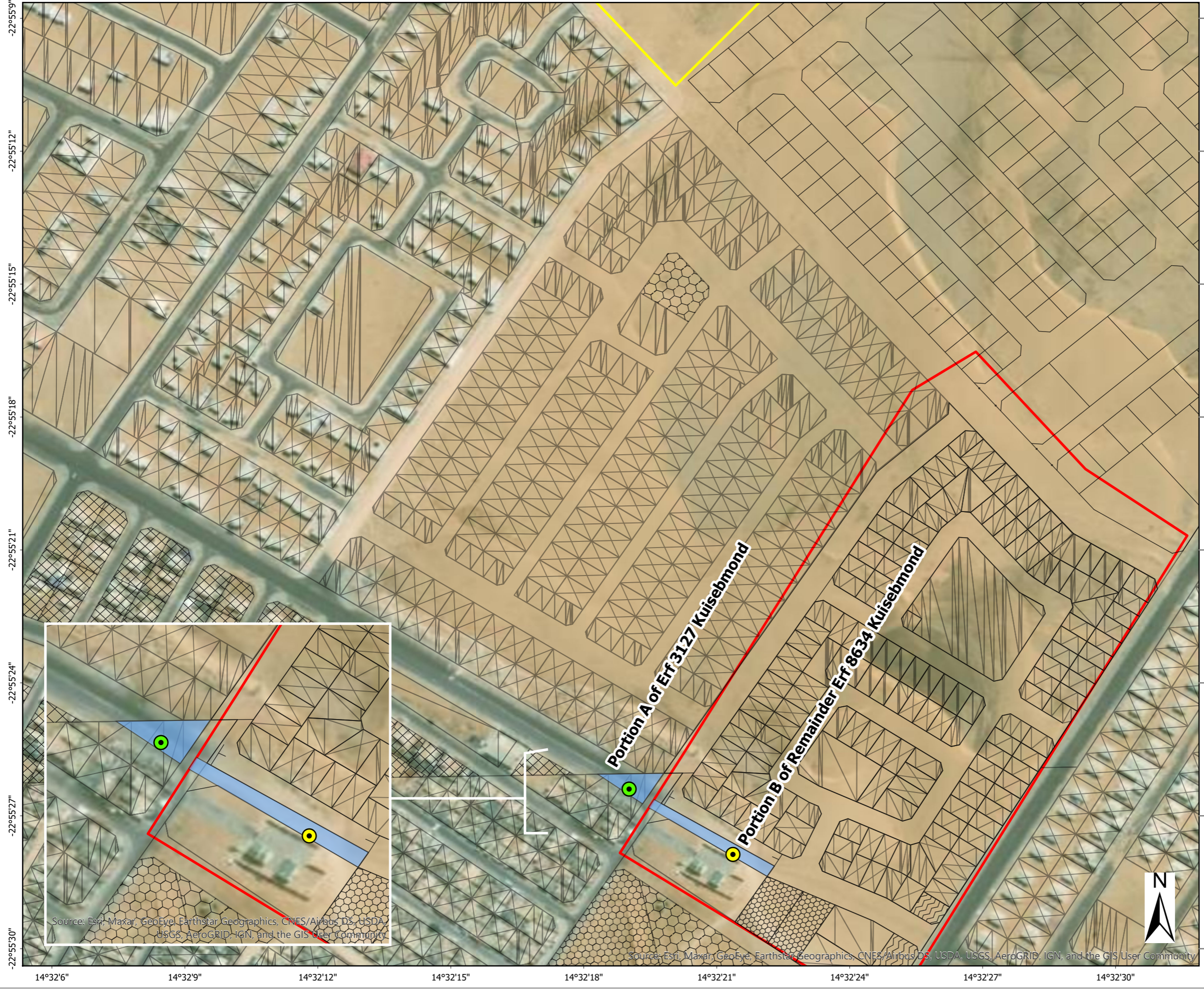


# PORTION A OF 3127 KUISEBMOND AND PORTION B OF THE REMAINDER OF ERF 8634 KUISEBMOND : LOCALITY MAP



- Legend**
- Portion A of Erf 3127 Kuisebmond
  - Portion B of Remainder Erf 8634 Kuisebmond
  - Kuisebmond Ext 14
  - Kuisebmond Ext 15
  - Development
  - Area of Interest



Esri, HERE, Garmin, (c) OpenStreetMap contributors, and the GIS user community

Data Sources:  
Esri World Imagery Basemap  
Development layout provided by specialist

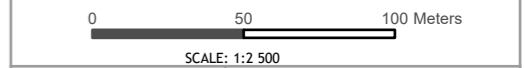


FIGURE NO.:	-	MAP NUMBER:	21-0304-07-V4
DRAWN BY:	N MBOKAZI GIS INTERN	REVIEWED BY:	T DOMINY GIS ANALYST
DATUM:	WGS84	DATE:	19 JANUARY 2022
PROJECTION:	GEOGRAPHIC		
PROJECT:	ENVIRONMENTAL IMPACT ASSESSMENT FOR TOWNSHIPS IN WALVIS BAY		
CLIENT:	MUNICIPALITY OF WALVIS BAY (NAMIBIA)		

**GCS**  
Water & Environmental Consultants

Credits: 63 Wessel Road Woodmead  
PO Box 2597 Rivonia 2128  
South Africa  
Tel: +27 (0) 11 803 5726  
Fax: +27 (0) 11 803 5745  
E-mail: jhb@gcs-sa.biz  
www.gcs-sa.biz

Source: Esri, Maxar, GeoEye, Earthstar Geographics, CNES/Airbus DS, USDA, USGS, AeroGRID, IGN, and the GIS User Community

Source: Esri, Maxar, GeoEye, Earthstar Geographics, CNES/Airbus DS, USDA, USGS, AeroGRID, IGN, and the GIS User Community

-22°55'9"  
-22°55'12"  
-22°55'15"  
-22°55'18"  
-22°55'21"  
-22°55'24"  
-22°55'27"  
-22°55'30"

14°32'6"    14°32'9"    14°32'12"    14°32'15"    14°32'18"    14°32'21"    14°32'24"    14°32'27"    14°32'30"

