

Environmental Scoping Assessment (ESA) for Base and Rare Metal on Exclusive Prospecting License (EPL) No. 5851 located east of Klein Aub in the Hardap Region

ENVIRONMENTAL ASSESSMENT FINAL REPORT

ECC Application Reference: APP- 003458

Author(s): Mr. Silas David	Client: Unique Capital Investment (Pty) Ltd
Reviewer: Ms. Rose Mtuleni	Contact person: Mr. Ewald Kajovi
Company: Excel Dynamic Solutions (Pty) Ltd	Telephone: +264 814152533/ +264811247228
Telephone: +264 (0) 61 259 530	Postal Address: P. O Box 11135, Klein Windhoek
Fax2email: +264 (0) 886 560 836	Email: ehkkajovi@gmail.com
Email: info@edsnamibia.com	



Excel Dynamic Solutions (Pty) Ltd

EXECUTIVE SUMMARY

Unique Capital Investment (Pty) Ltd (The Proponent), has applied to the Ministry of Mines and Energy (MME) for the Exclusive Prospecting Licence (EPL) No. 5851. The Licence was granted to The Proponent on the 11th December 2018 and expired on the 10th December 2021. Thus, a renewal application has been lodged. The area of the EPL is 1801. 0745 ha, and is located within Klein Aub (east) in the Hardap Region. The EPL has potential for commodities such as Base & Rare Metals, Industrial Minerals and Precious Metals. However, the target commodity of this project is: **Base & Rare Metals (Copper) only.**

Prospecting, and exploration related activities are among listed activities that may not be undertaken without an ECC under the Environmental Impact Assessment (EIA) Regulations. Subsequently, to ensure that the proposed activity is compliant with the national environmental legislation, the project Proponent, appointed an independent environmental consultant, Excel Dynamic Solutions (Pty) Ltd to undertake the required Environmental Assessment (EA) process and apply for the ECC on their behalf.

The application for the ECC was compiled and submitted to the competent Authority (Ministry of Mines and Energy (MME)). The date stamped (02 February 2022) copy of the ECC by MME was also uploaded on the online ECC Portal for the Ministry of Environment, Forestry and Tourism (MEFT) as the environmental custodian for project registration purposes. Upon submission of an Environmental Scoping Assessment (ESA) Report and Draft Environmental Management Plan (EMP), and ECC for the proposed project will be considered by the Environmental Commissioner at the MEFT's Department of Environmental Affairs and Forestry (DEAF).

Brief Project Description

Planned Activities: Proposed Exploration Methods

The Proponent intends to adopt a systematic prospecting and exploration approach of the following:



Excel Dynamic Solutions (Pty) Ltd

- A. Desktop Study: Geological mapping (Non-invasive Technique):** This mainly entails a desktop review of geological area maps and ground observations. This includes the review of geological maps of the area and on-site ground traverses and observations and an update where relevant, of the information obtained during previous geological studies of the area.
- B. Lithology geochemical surveys:** Rock and soil samples shall be collected and taken for trace element analysis to be conducted by analytical chemistry laboratories to determine if enough Base and Rare Metals are present. Also, trenches or pits may be dug depending on the commodity (in a controlled environment e.g., fencing off and labelling activity sites) adopting manual or excavator to further investigate the mineral potential. Soil sampling consists of small pits ($\pm 20\text{cm} \times 20\text{cm} \times 30\text{cm}$) being dug where 1kg samples can be extracted and sieved to collect 50g of material. As necessary, and to ensure adequate risks mitigation, all major excavations will either be opened and closed immediately after obtaining the needed samples or the sites will be secured until the trenches or pits are closed. At all times, the farm owners and other relevant stakeholder will be engaged to obtain authorisation where necessary.
- C. Geophysical surveys:** This will entail data collection of the substrata (in most cases service of an aero-geophysical contractor will be sourced), by air or ground, through sensors such as radar, magnetic and electromagnetic to detect any mineralization in the area and are conducted to ascertain the mineralisation. Ground geophysical surveys shall be conducted, where necessary using vehicle-mounted sensors or handheld by staff members, while in the case of air surveys the sensors will be mounted to an aircraft, which then flies over the target area.



Excel Dynamic Solutions (Pty) Ltd

D. Detailed Exploration Drilling (Invasive Technique): Should analyses by an analytical laboratory be positive, holes are drilled, and drill samples collected for further analysis. This will determine the depth of the potential mineralization. If necessary new access tracks to the drill sites will be created and drill pads will be cleared in which to set up the rig. Two widely used drilling options may be adopted, these are either Reverse Circulation (RC) drilling and/or diamond-core drilling. RC drilling uses a pneumatic hammer, which drives a rotating tungsten-steel bit. The technique produces an uncontaminated large volume sample, which is comprised of rock chips. It is relatively quicker and cheaper when compared to other techniques like Diamond Drilling. However, diamond drilling may also be considered for this exploration programme, for better geological control and to perform processing trials. A typical drilling site will consist of a drill-rig, and support vehicles as well as a drill core and geological samples store. A drill core equipment parking and maintenance yard may be set up (including a fuel and lubricants storage facility).

Public Consultation

Public Consultation Activities

Regulation 21 of the EIA Regulations details steps to be taken during a public consultation process and these have been used in guiding this process. The public consultation process assisted the Environmental Consultant in identifying all potential impacts and aided in the process of identifying possible mitigation measures and alternatives to certain project activities. The communication with I&APs about the proposed prospecting and exploration activities was done through the following means and in this order to ensure that the public is notified and afforded an opportunity to comment on the proposed project:

- A Background Information Document (BID) containing brief information about the proposed facility was compiled and hand delivered to relevant Authoritative Ministries, and upon request to all new registered Interested and Affected parties (I&APs).
- Project Environmental Assessment notices were published in *The Namibian* (17 January 2022 and 24 January 2022) and *New Era* Newspapers (17 January 2022 and 24 January 2022), briefly explaining the activity and its locality, inviting members of the public to register as I&APs and submit their comments/concerns.



Excel Dynamic Solutions (Pty) Ltd

- A consultation meeting was scheduled and held with the affected landowners on the 15th of February 2022 at Klein Aub Community Hall at 12h30. The consultation meeting minutes were recorded.
- The issues and concerns raised were noted and used to form a basis for the ESA Report and EMP.

Potential Impacts identified

The following potential negative impacts are anticipated:

- **Positive impacts:** Socio-economic development through employment creation (primary, secondary, and tertiary employment) and skills transfer; Opens up other investment opportunities and infrastructure-related development benefits; Produces a trained workforce and small businesses that can service communities and may initiate related businesses; Boosts the local economic growth and regional economic development and; Increased support for local businesses through the procurement of consumable items such as Personal Protective Equipment (PPE), machinery spare parts, lubricants, etc.
- **Negative impacts:** Potential disturbance of existing pastoral systems; Physical land/soil disturbance; Impact on local biodiversity (fauna and flora); Habitat disturbance and potential illegal wildlife and domestic hunting in the area; Potential impact on water resources and soils particularly due to pollution; Air quality issue: potential dust generated from the project; Potential occupational health and safety risks, Vehicular traffic safety and impact on services infrastructure such as local roads, Vibrations and noise associated with drilling activities may be a nuisance to locals; Environmental pollution (solid waste and wastewater), Archaeological and heritage impact and Potential social nuisance and conflicts (theft, damage to properties, etc.).

The potential negative impacts were assessed, and mitigation measures provided accordingly.

RECOMMENDATIONS AND CONCLUSIONS

The potential impacts that are anticipated from the proposed project activities were identified, described, and assessed. For the significant adverse (negative) impacts with medium rating,

appropriate management and mitigation measures were recommended for implementation by the Proponent, their contractors and project related employees.

The public was consulted as required by the EMA and its 2012 EIA Regulations (Section 21 to 24). This was done via the two newspapers (*New Era* and *The Namibian*) used for this environmental assessment. A consultation through face-to-face meeting with directly affected landowners at Klein Aub Community Hall in Klein Aub was conducted, whereby they raised comments and concerns on the proposed project activities.

The issues and concern raised by the registered I&APs formed the basis for this Report and the Draft EMP. The issues were addressed and incorporated into this Report whereby mitigation measures have been provided thereof to avoid and/or minimize their significance on the environmental and social components. Most of the potential impacts were found to be of medium rating significance. With the effective implementation the recommended management and mitigation measures, this will particularly see the reduction in the significance of adverse impacts that cannot be avoided completely (from medium rating to low). To maintain the desirable rating, the implementation of management and mitigation measures should be monitored by the Proponent directly, or their Environmental Control Officer (ECO) is highly recommended. The monitoring of this implementation will not only be done to maintain the reduce impacts' rating or maintain low rating but to also ensure that all potential impacts identified in this study and other impacts that might arise during implementation are properly identified in time and addressed right away too.

An Archaeological & Heritage Impact Assessment (AHIA) was done by a specialist for this ESA Study. The findings of this AHIA and the Scoping assessment (ESA) were deemed sufficient and conclude that no further detailed assessments are required to the ECC application.

Recommendations

The Environmental Consultant is confident that the potential negative impacts associated with the proposed project activities can be managed and mitigated by the effective implementation of the recommended management and mitigation measures and with more effort and commitment put on monitoring the implementation of these measures.

It is therefore, recommended that the proposed prospecting and exploration activities be granted an ECC, provided that:



Excel Dynamic Solutions (Pty) Ltd

- All the management and mitigation measures provided herein are effectively and progressively implemented.
- All required permits, licenses and approvals for the proposed activities should be obtained as required. These include permits and licenses for land use access agreements to explore and ensuring compliance with these specific legal requirements.
- The Proponent and all their project workers or contractors comply with the legal requirements governing their project and its associated activities and ensure that project permits and or approvals required to undertake specific site activities are obtained and renewed as stipulated by the issuing authorities.
- Site areas where exploration activities have ceased are rehabilitated, as far as practicable, to their pre-exploration state.
- Environmental Compliance monitoring reports should be compiled and submitted to the DEAF Portal as per provision made on the MEFT/DEAF's portal.

Conclusions

In conclusion, with that being done, it is crucial for the Proponent and their contractors as well as to effectively implementation of the recommended management and mitigation measures to protect both the biophysical and social environment throughout the project duration. All these would be done with the aim of promoting environmental sustainability while ensuring a smooth and harmonious existence and purpose of the project activities in the community and environment at large.

Disclaimer

EDS warrants that the findings and conclusion contained herein were accomplished in accordance with the methodologies set forth in the Scope of Work and Environmental Management Act (EMA) of 2007. These methodologies are described as representing good customary practice for conducting an Environmental Impact Assessment of a property for the purpose of identifying recognized environmental conditions. There is a possibility that even with the proper application of these methodologies there may exist on the subject property conditions that could not be identified within the scope of the assessment, or which were not reasonably identifiable from the available information. The Consultant believes that the information obtained



Excel Dynamic Solutions (Pty) Ltd

from the record review and during the public consultation processes concerning the proposed exploration work is reliable. However, the Consultant cannot and does not warrant or guarantee that the information provided by the other sources is accurate or complete. The conclusions and findings set forth in this report are strictly limited in time and scope to the date of the evaluations. No other warranties are implied or expressed.

Some of the information provided in this report is based upon personal interviews, and research of available documents, records, and maps held by the appropriate government and private agencies. This report is subject to the limitations of historical documentation, availability, and accuracy of pertinent records and the personal recollections of those persons contacted.

TABLE OF CONTENTS

EXECUTIVE SUMMARY	ii
LIST OF FIGURES	xi
LIST OF TABLES	xi
LIST OF APPENDICES	xii
LIST OF ABBREVIATIONS	xiv
1 INTRODUCTION.....	18
1.1 Project Background	18
1.2 Terms of Reference and Scope of Works	19
1.3 Appointed Environmental Assessment Practitioner	20
1.4 The Need for the Proposed Project	20
2 PROJECT DESCRIPTION: PROPOSED EXPLORATION ACTIVITY.....	21
2.1 Pre-development Phase (Prospecting).....	21
2.4 Decommissioning and Rehabilitation Phase.....	26
3 PROJECT ALTERNATIVES	27
3.1 Types of Alternatives Considered	27
3.1.1 The "No-go" Alternative.....	27
3.1.2 Exploration Location	28
3.1.3 Exploration Methods.....	29
4 LEGAL FRAMEWORK: LEGISLATION, POLICIES AND GUIDELINES	29
4.1 The Environmental Management Act (No. 7 of 2007)	30
5 ENVIRONMENTAL BASELINE	45
5.1 Biophysical Environment.....	45
5.2 Climate	45
5.2.1 Rainfall.....	45
5.2.2 Temperature.....	46
5.2.3 Winds	47
5.2.4 Relative Humidity.....	48
5.3 Topography	49
5.4 Geology and Soil	51



5.5	Hydrology and Water Resources	54
5.6	Flora and Fauna	54
5.7	Heritage and Archaeology	57
5.7.1	Local Level and Archaeological Findings	57
5.8	Surrounding Land Uses	58
5.9	Socio-Economic conditions.....	59
6	PUBLIC CONSULTATION PROCESS	62
6.1	Pre-identified and Registered Interested and Affected Parties (I&APs)	62
6.2	Communication with I&APs	63
7	IMPACT IDENTIFICATION, ASSESSMENT AND MITIGATION MEASURES	67
7.1	Impact Identification	67
7.2	Impact Assessment Methodology	68
7.2.1	Extent (spatial scale)	68
7.2.2	Duration	69
7.2.3	Intensity, Magnitude / severity	69
7.2.4	Probability of occurrence.....	70
7.2.5	Significance	70
7.3	Assessment of Potential Negative Impacts.....	72
7.3.1	Disturbance to the grazing areas	72
7.3.2	Land Degradation and Loss of Biodiversity.....	73
7.3.3	Generation of Dust (Air Quality)	75
7.3.4	Water Resources Use	76
7.3.5	Soil and Water Resources Pollution.....	78
7.3.6	Waste Generation.....	79
7.3.7	Occupational Health and Safety Risks.....	81
7.3.8	Vehicular Traffic Use and Safety.....	82
7.3.9	Noise and vibrations	84
7.3.10	Disturbance to Archaeological and Heritage resources	85
7.3.11	Impact on Local Roads.....	88
7.3.12	Social Nuisance: Local Property intrusion and Disturbance or Damage	89
7.3.13	Social Nuisance: Job seeking and Differing Norms, Culture and Values	90



Excel Dynamic Solutions (Pty) Ltd

7.4	Cumulative Impacts Associated with Proposed Exploration.....	91
7.5	Mitigations and Recommendations for Rehabilitation	91
8	CONCLUSIONS AND RECOMMENDATIONS	92
8.1	Conclusion.....	92
8.2	Recommendations.....	92
9	REFERENCES.....	95

LIST OF FIGURES

Figure 1:	Locality map for EPL No. 5851 located near Klein Aub, Hardap Region.	19
Figure 2:	The mineral exploration cycle (after, Savannah Resources, 2019)	22
Figure 3:	The location of EPL 5851 on the National Mining Cadastre	29
Figure 4:	A graph showing monthly average rainfall patterns for the project area (Source: https://en.climate-data.org/).	46
Figure 5:	A graph showing monthly average temperature patterns for the project area (Source: https://en.climate-data.org/).	47
Figure 6:	A graph showing average monthly wind speed in the project area (Source: https://en.climate-data.org/).	48
Figure 7:	A graph showing relative humidity patterns in the project area (Source: https://en.climate-data.org/).	49
Figure 8:	8a: Landscape of project area; 8b: Elevation 3D Model of project area & 8c: Cross Section graph.....	51
Figure 9:	A map of the general geology of the project area.....	52
Figure 10:	shows the dominant soil types found within the EPL	53
Figure 11:	Eutric Leptosols soil with visible hard-rocks around the project area.	53
Figure 12:	shows the hydrology map of the project area	54
Figure 13:	Vegetation map around the EPL 5851	55
Figure 14:	Acacia Hereroensis Vegetation cover (red rectangle) with the EPL area.	56
Figure 15:	Animal dug (donkey dug) observed during the site visit on 15th February 2022.	57
Figure 16:	Map showing mapped areas of 1.5 km buffer zone created for located historical sites	58
Figure 18:	Map showing land use within and surrounding the EPL	59
Figure 18:	Services and Infrastructures around the project area (source: NSA, 2022).....	60
Figure 19:	Public notices placed at Klein Aub Settlement Office, Klein Aub, Hardap Region	64
Figure 21:	Public meeting scheduled on 15 February 2022 at Klein Aub Community Hall, Klein Aub.....	66

LIST OF TABLES



Table 1: Applicable local, national and international standards, policies and guidelines governing the proposed development	30
Table 2: International Policies, Principles, Standards, Treaties and Convention applicable to the project.....	40
Table 3: Summary of Interested and Affected Parties (I&APs)	63
Table 4: Summary of main issues and comments received during the first public meeting engagements	66
Table 5: Extent or spatial impact rating	68
Table 6: Duration impact rating	69
Table 7: Intensity, magnitude or severity impact rating.....	69
Table 8: Probability of occurrence impact rating.....	70
Table 9: Significance rating scale	71
Table 10: Assessment of the impacts of exploration on grazing areas	73
Table 11: Assessment of the impacts of exploration on biodiversity	74
Table 12: Assessment of the impacts of exploration on air quality	76
Table 13: Assessment of the project impact on water resource use and availability	77
Table 14: Assessment of the project impact on soils and water resources (pollution).....	78
Table 15: Assessment of waste generation impact	80
Table 16: Assessment of the impacts of exploration on health and safety	81
Table 17: Assessment of the impacts of exploration on road use (vehicular traffic)	83
Table 18: Assessment of the impacts of noise and vibrations from exploration	84
Table 19: Assessment of the impacts of exploration on archaeological & heritage resources....	85
Table 20: Assessment of exploration on local services (roads and water).....	88
Table 21: Assessment of social impact of community property damage or disturbance	89
Table 22: Social impact assessment of outsiders' influx into the area (job seeking related).....	90

LIST OF APPENDICES

Appendix A: Copy of the Environmental Clearance Certificate (ECC) Application Form 1

Appendix B: Draft Environmental Management Plan (EMP)

Appendix C: Curricula Vitae (CV) for the Environmental Assessment Practitioner (EAP)

Appendix D: List of Interested and Affected Parties (I&APs) - ***uploaded separately on the Portal as required (under the "Proof of Public Consultation" file)***

Appendix E: Background Information Document (BID) - ***uploaded separately on the Portal as required (under the "Proof of Public Consultation" file)***



Excel Dynamic Solutions (Pty) Ltd

Appendix F: EIA Notification in the newspapers (*New Era* and the *Namibian*) - ***uploaded separately on the Portal as required (under the "Proof of Public Consultation" file)***

Appendix G: Farmers' Consultation Meeting Minutes - ***uploaded separately on the Portal as required (under the "Proof of Public Consultation" file)***

Appendix H: Original Issues and Concerns received from the I&APs - ***uploaded separately on the Portal as required (under the "Proof of Public Consultation" file)***

Appendix I: Archaeological and Heritage Impact Assessment Report



Excel Dynamic Solutions (Pty) Ltd

LIST OF ABBREVIATIONS

Abbreviation	Meaning
AMSL	Above Mean Sea Level
BID	Background Information Document
CV	Curriculum Vitae
DEA	Department of Environmental Affairs
EA	Environmental Assessment
EAP	Environmental Assessment Practitioner
ECC	Environmental Clearance Certificate
EDS	Excel Dynamic Solutions
ESA	Environmental Scoping Assessment
EMA	Environmental Management Act
EMP	Environmental Management Plan
EPL	Exclusive Prospecting Licence
GG	Government Gazette
GN	Government Notice
I&APs	Interested and Affected Parties
MEFT	Ministry of Environment, Forestry and Tourism
MME	Ministry of Mines and Energy
PPE	Personal Protective Equipment
Reg	Regulation
S	Section
TOR	Terms of Reference

DEFINATION OF TERMS

Alternative	A possible course of action, in place of another that would meet the same purpose and need of the proposal.
Baseline	Work done to collect and interpret information on the condition/trends of the existing environment.
Biophysical	That part of the environment that does not originate with human activities (e.g. biological, physical and chemical processes).
Cumulative Impacts/Effects Assessment	In relation to an activity, means the impact of an activity that in it may not be significant but may become significant when added to the existing and potential impacts eventuating from similar or diverse activities or undertakings in the area.
Decision-maker	The person(s) entrusted with the responsibility for allocating resources or granting approval to a proposal.
Ecological Processes	Processes which play an essential part in maintaining ecosystem integrity. Four fundamental ecological processes are the cycling of water, the cycling of nutrients, the flow of energy and biological diversity (as an expression of evolution).
Environment	As defined in Environmental Management Act - the complex of natural and anthropogenic factors and elements that are mutually interrelated and affect the ecological equilibrium and the quality of life, including – (a) the natural environment that is land, water and air; all organic and inorganic matter and living organisms and (b) the human environment that is the landscape and natural, cultural, historical, aesthetic, economic and social heritage and values.



Environmental Management Plan	As defined in the EIA Regulations (Section 8(j)), a plan that describes how activities that may have significant environments effects are to be mitigated, controlled and monitored.
Exclusive Prospecting Licence	Is a license that confers exclusive mineral prospecting rights over land of up to 1000 km ² in size for an initial period of three years, renewable twice for a maximum of two years at a time
Interested and Affected Party (I&AP)	In relation to the assessment of a listed activity includes - (a) any person, group of persons or organization interested in or affected by an activity; and (b) any organ of state that may have jurisdiction over any aspect of the activity. Mitigate - practical measures to reduce adverse impacts. Proponent – as defined in the Environmental Management Act, a person who proposes to undertake a listed activity. Significant impact - means an impact that by its magnitude, duration, intensity or probability of occurrence may have a notable effect on one or more aspects of the environment.
Fauna	All of the animals found in a given area.
Flora	All of the plants found in a given area.
Mitigation	The purposeful implementation of decisions or activities that are designed to reduce the undesirable impacts of a proposed action on the affected environment.
Monitoring	Activity involving repeated observation, according to a pre-determined schedule, of one or more elements of the environment to detect their characteristics (status and trends).



Nomadic Pastoralism	Nomadic pastoralists live in societies in which the husbandry of grazing animals is viewed as an ideal way of making a living and the regular movement of all or part of the society is considered a normal and natural part of life. Pastoral nomadism is commonly found where climatic conditions produce seasonal pastures but cannot support sustained agriculture.
Proponent	Organization (private or public sector) or individual intending to implement a development proposal.
Public Consultation/Involvement	A range of techniques that can be used to inform, consult or interact with stakeholders affected by the proposed activities.
Protected Area	Refers to a protected area that is proclaimed in the Government Gazette according to the Nature Conservation Ordinance number 4 of 1975, as amended
Scoping	An early and open activity to identify the impacts that are most likely to be significant and require specialized investigation during the EIA work. Can, also be used to identify alternative project designs/sites to be assessed, obtain local knowledge of site and surroundings and prepare a plan for public involvement. The results of scoping are frequently used to prepare a Terms of Reference for the specialized input into full EIA.
Terms of Reference (ToR)	Written requirements governing full EIA input and implementation, consultations to be held, data to be produced and form/contents of the EIA report. Often produced as an output from scoping.

1 INTRODUCTION

1.1 Project Background

Unique Capital Investment (Pty) Ltd (hereinafter referred to as The Proponent), has applied to the Ministry of Mines and Energy (MME) to be granted the Exclusive Prospecting Licence (EPL) No. 5851. The licence was granted to The Proponent on the 11th December 2018 and expired on the 10th December 2021. Thus, a renewal application has been lodged. The area of the EPL is 1801.0745 ha, and is located within Klein Aub in the Hardap Region (**Figure 1**). The EPL has potential for commodities such as Base & Rare Metals, Industrial Minerals and Precious Metals. However, the target commodities of this project are: Base & Rare Metals only.

Section 27 (1) of the Environmental Management Act (EMA) (No. 7 of 2007) and its 2012 Environmental Impact Assessment (EIA) regulations, provides a list of activities that may not be carried out without an Environmental Impact Assessment (EIA) undertaken and an Environmental Clearance Certificate (ECC) obtained. Exploration activities are listed among activities that may not occur without an ECC. Therefore, individuals or organizations may not carry out exploration activities without an EIA undertaken and an ECC awarded.

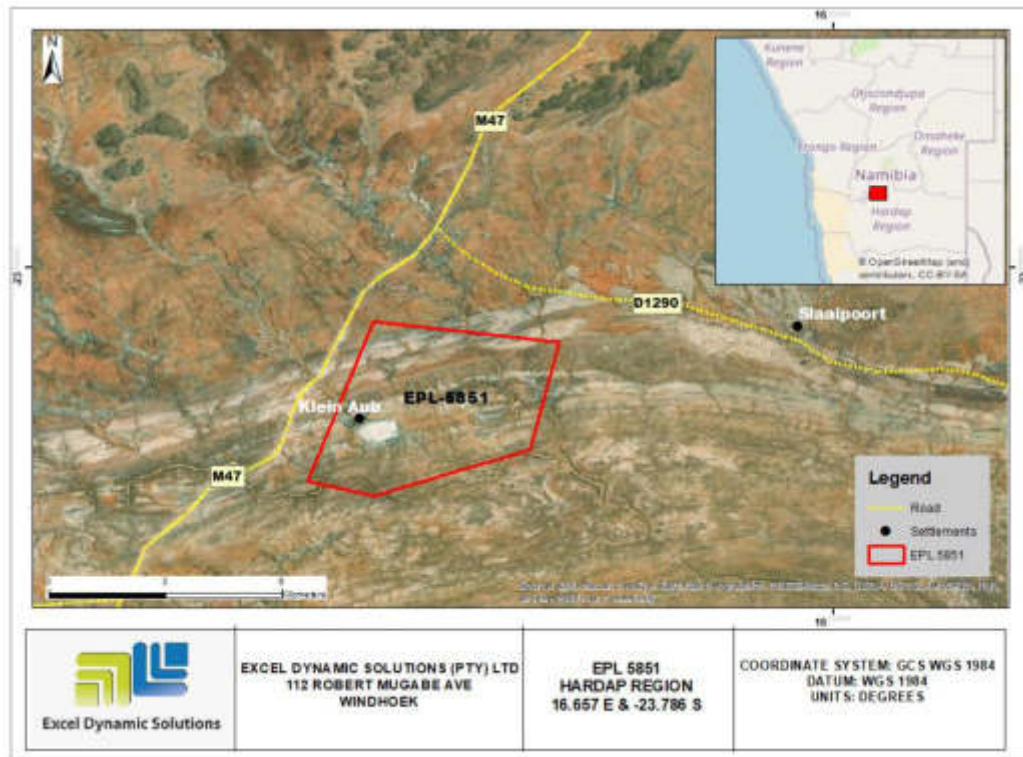


Figure 1: Locality map for EPL No. 5851 located near Klein Aub, Hardap Region.

1.2 Terms of Reference and Scope of Works

Excel Dynamic Solutions (Pty) Ltd (EDS) has been appointed by the Proponent to undertake an environmental assessment (EA), and thereafter, apply for an ECC for exploration works on the EPL. There were no formal Terms of Reference (ToR) provided to EDS by the Proponent. The consultant, instead, relied on the requirements of the Environmental Management Act (No. 7 of 2007) (EMA) and its Environmental Impact Assessment (EIA) Regulations (GN. No. 30 of 2012) to conduct the study.

The application for the ECC was compiled and submitted to the Competent Authority (Ministry of Mines and Energy (MME)). The date stamped (02 February 2022) copy of the ECC by MME (**Appendix A**) was also uploaded on the online ECC Portal for the Ministry of Environment, Forestry and Tourism (MEFT) as the environmental custodian for project registration purposes. Upon submission of an Environmental Scoping Assessment (ESA) Report and Draft

Environmental Management Plan (EMP), an ECC for the proposed project will be considered by the Environmental Commissioner at the MEFT's Department of Environmental Affairs and Forestry (DEAF).

1.3 Appointed Environmental Assessment Practitioner

To satisfy the requirements of the EMA and its 2012 EIA Regulations, The Proponent appointed EDS, to conduct the required EA process on their (Proponent's) behalf. The findings of the EA are incorporated into this report and the draft EMP – (**Appendix B**). These documents will be submitted as part of the ECC application to the Environmental Commissioner at the DEAF.

The EIA project is headed by Mr. Nerson Tjelos, a qualified and experienced Geoscientist and experienced EAP. The consultation process and reporting are done by Mr. Silas David and Reviewed by Ms. Rose Mtuleni. Mr. Nerson Tjelos CV is presented in **Appendix C**.

1.4 The Need for the Proposed Project

The mining industry is one of the largest contributors to the Namibian economy; therefore, it contributes to the improvement of livelihoods. In Namibia, exploration for minerals is done mainly by the private sector. Exploration activities have a great potential to enhance and contribute to the development of other sectors and its activities do provide temporary employment, and taxes that fund social infrastructural development. The minerals sector yields foreign exchange and account for a significant portion of gross domestic product (GDP). Additionally, the industry produces a trained workforce and small businesses that can serve communities and may initiate related businesses. Exploration activity fosters several associated activities such as manufacturing of exploration and mining equipment, and provision of engineering and environmental services. The mining sector forms the vital part of some of Namibia's development plans, namely: Vision 2030, National Development Plan 5 (NDP5) and Harambee Prosperity Plans (HPPs) I and II. Thus, mining is essential to the development goals of Namibia in contributing to meeting the ever-increasing global demand for minerals, and for national prosperity. Therefore, successful exploration on EPL 5851 would lead to the mining of Base and



Excel Dynamic Solutions (Pty) Ltd

Rare Metals which could contribute towards achieving the goals of the national development plans; hence the need to undertake the proposed exploration activities on the EPL.

2 PROJECT DESCRIPTION: PROPOSED EXPLORATION ACTIVITY

The prospecting and exploration of minerals are the first components of any potential mining project (development and eventual mining). This is done to acquire the necessary data required for further decision making and investment options. These activities are anticipated to last for about three years, with ground geophysical surveys done in stages on different parts of the EPL, lasting several weeks. The exploration process includes three phases, namely: prospecting, exploration, and the decommissioning of works.

2.1 Pre-development Phase (Prospecting)

During the prospecting and exploration phase, reviewing existing reports and composite stratigraphic lithological-geochemical maps of the targeted areas to identify prospective lithostratigraphic packages will be vital. In addition to the literature review, fieldwork (lithological (soil/rock) mapping and sampling) will be conducted to verify desktop work. Up to this point, no physical disturbance is required. Prospecting during the advanced exploration phase will require the Proponent to assess the EPL area through detailed geological mapping, geophysical and geochemical surveys, to define targets for test pitting, trenching, and drilling. Upon issuance of an ECC, the exploration program will commence with ground geophysical surveys. These surveys and associated activities are part of the exploration cycle illustrated in **Figure 2** below.



Figure 2: The mineral exploration cycle (after, Savannah Resources, 2019)

2.2 Exploration: Drilling, Sampling and Analysis) Phase

The selection of the potential mineralization model and exploration targets will be based on the local geology, trenching, drilling, and assay results of the samples collected. The planned exploration activities are aimed at delineating the mineral deposits and determining whether the deposits are economically feasible mining resources. No explosives will be used during the exploration phase.

2.3 Planned Activities: Proposed Exploration Methods

The Proponent intends to adopt a systematic prospecting and exploration approach of the following:



Excel Dynamic Solutions (Pty) Ltd

2.3.1 Desktop Study: Geological mapping (Non-invasive Technique)

This mainly entails a desktop review of geological area maps and ground observations. This includes the review of geological maps of the area and on-site ground traverses and observations and an update where relevant, of the information obtained during previous geological studies of the area.

2.3.2 Lithology geochemical surveys

Rock and soil samples shall be collected and taken for trace element analysis to be conducted by analytical chemistry laboratories to determine if enough Base and Rare Metals are present. Additionally, trenches or pits may be dug depending on the commodity (in a controlled environment e.g., fencing off and labelling activity sites) adopting manual or excavator to further investigate the mineral potential.

Soil sampling consists of small pits ($\pm 20\text{cm} \times 20\text{cm} \times 30\text{cm}$) being dug where 1kg samples can be extracted and sieved to collect 50g of material. As necessary, and to ensure adequate risks mitigation, all major excavations will either be opened and closed immediately after obtaining the needed samples or the sites will be secured until the trenches or pits are closed. At all times, the landowner and other relevant stakeholder will be engaged to obtain authorization where necessary.

2.3.3 Geophysical surveys

This will entail data collection of the substrata (in most cases service of an aero-geophysical contractor will be sourced), by air or ground, through sensors such as radar, magnetic and electromagnetic to detect any mineralization in the area and are conducted to ascertain the mineralization.

Ground geophysical surveys shall be conducted, where necessary, using vehicle-mounted sensors or handheld by staff members, while in the case of air surveys the sensors will be mounted to an aircraft, which then navigates over the target area.

2.3.4 Detailed Exploration Drilling (Invasive Technique)



Excel Dynamic Solutions (Pty) Ltd

Should analyses by an analytical laboratory be positive, holes are drilled, and drill samples collected for further analysis. This will determine the depth of the potential mineralization. If necessary new access tracks to the drill sites will be created and drill pads will be cleared in which to set up the rig. Two widely used drilling options may be adopted, these are the Reverse Circulation (RC) drilling method and/or the Diamond (Core) drilling method. The RC drilling method uses a pneumatic hammer, which drives a rotating tungsten-steel bit. The technique produces an uncontaminated large volume sample, which comprises rock chips. It is relatively quicker and cheaper when compared to other techniques like Diamond Drilling. However, Diamond drilling may also be considered for this exploration programme, for better geological control and to perform processing trials.

A typical drilling site will consist of a drill-rig and support vehicles as well as a drill core and geological samples store. A drill equipment parking and maintenance yard may be set up (including a fuel and lubricants storage facility).

Other aspects of the exploration operations include:

2.3.5 Accessibility to Site

The EPL is accessible via C24 road from Klein Aub which connects to gravel roads leading to the EPL. Therefore, project related vehicles will be using these existing roads to access the EPL. It is also anticipated that, if necessary, onsite new tracks to the different targeted exploration sites within the EPL will be created. The Proponent may need to do some upgrade on the site access road to ensure that it is fit to accommodate project related vehicles, such as heavy trucks.

2.2.2 Material and Equipment

The input required for the exploration program in terms of vehicles and equipment includes: (4X4) vehicles, a truck, water tanks, drill rigs and drilling machines, and a power generator. Equipment and vehicles will be stored at a designated area near the accommodation site or a storage site established within the EPL area.

2.2.3 Services and Infrastructure

Water: Water for the exploration operations on the EPL will be obtained from the nearest existing boreholes at in Klein Aub. Estimated monthly water consumptions are at \pm 3000 liters, but will not



Excel Dynamic Solutions (Pty) Ltd

exceed 80 000 liters, which includes water for drinking, sanitation, cooking, dust control, drilling, as well as washing of equipment.

Power supply: Power required during the operation phase will be provided from diesel-generators. About 2000 litres of diesel will be used per day, a bunded diesel bowser which will be on site, will be filled 2 – 3 times a week by a diesel bowser.

Fuel (diesel for generators and other equipment): The fuel (diesel) required for exploration equipment will be stored in a tank mounted on a mobile trailer, and drip trays will be readily available on this trailer and monitored to ensure that accidental fuel spills are cleaned up as soon as they have been detected/observed. Fuel may also be stored in jerry cans placed on plastic sheeting to avoid unnecessary contamination of the ground.

2.2.4 Waste Management

The site will be equipped with secured waste bins for each type of waste (i.e., domestic, hazardous, and recyclable). Depending on the amount generated, waste will be sorted and collected weekly or monthly and taken to the nearest certified landfill site. An agreement will need to be reached with different waste management facility operators/owners and authorization or permits will be obtained prior to utilizing these facilities, in the case of production of any hazardous waste.

Sanitation and human waste: Flush toilet facilities will be used and the sewage will be disposed of as according to the approved disposal or treatment methods of the product

Hazardous waste: Drip trays and spill control kits will be available on site to ensure that oil/fuel spills and leaks from vehicles and equipment are captured on time and contained correctly before polluting the site.

The waste produced on-site can also be categorized as mineral or non-mineral waste:

Mineral Waste: Consists of solid products of exploration and mineral concentration to acquire the targeted minerals. Mineral waste will potentially be produced throughout the project exploration phase. This waste will be stripped and dumped in allocated areas as stipulated in the EMP.



Excel Dynamic Solutions (Pty) Ltd

Non-mineral Waste: Consists primarily of auxiliary materials that will support the exploration phase. This includes but is not limited to items such as empty containers, plastic etc., and other domestic waste. This waste will be collected, sorted and taken to the dumpsite weekly, bi-weekly or as regularly as necessary.

2.2.8 Health and safety

Adequate and appropriate Personal Protective Equipment (PPE) will be provided to every project personnel while on and working at site. A minimum of two first aid kits will be readily available on site to attend to potential minor injuries.

2.2.9 Safety and Security

Storage Site: Temporary storage areas for exploration material, equipment and machinery will be required at the campsite and/or exploration sites. Security will be supplied on a 24-hour basis at the delegated sites for storage. A temporary support fence surrounding the storage site will be constructed to ensure people and domestic animals are not put at risk.

Fire management: A minimum of basic firefighting equipment, i.e., two fire extinguishers will be readily available in vehicles, at the working sites and camps.

On-site Workers' Safety: Adequate and appropriate Personal Protective Equipment (PPE) will be provided to every project personnel while on and working at site. A minimum of two first aid kits will be readily available on site to attend to potential minor injuries.

2.2.2 Accommodation

The exploration crew will be accommodated in Klein Aub, or a campsite will be set up for the exploration crew near the exploration sites. If the accommodation camp is to be set up on a farm, necessary arrangements will be made with the farm owner/s. Exploration activities will take place during daytime only and staff will commute to exploration site (s) from their place of accommodation.

2.4 Decommissioning and Rehabilitation Phase

Once the exploration activities on the EPL come to an end, the Proponent will need to put site rehabilitation measures in place. Decommissioning and rehabilitation are primarily reinforced



Excel Dynamic Solutions (Pty) Ltd

through a decommissioning and rehabilitation plan, which consists of safety, health, environmental, and contingency aspects. The economic situation or unconvincing exploration results might force the Proponent to cease the exploration program before predicted closure. Therefore, it is of best practice for the Proponent to ensure the project activities are ceased in an environmentally friendly manner and site is rehabilitated.

3 PROJECT ALTERNATIVES

Alternatives are defined as the “*different means of meeting the general purpose and requirements of the activity*” (EMA, 2007). This section will highlight the different ways in which the project can be undertaken and to identify the alternative that will be the most practical, but least damaging to the environment is identified.

Once the alternatives have been established, these are examined by asking the following three questions:

- What alternatives are technically and economically feasible?
- What are the environmental effects associated with the feasible alternatives?
- What is the rationale for selecting the preferred alternative?

The alternatives considered for the proposed development are discussed in the following subsections.

3.1 Types of Alternatives Considered

3.1.1 The "No-go" Alternative

The “no action” alternative implies that the status quo remains, and nothing happens. Should the proposal of exploration activities on the EPL, be discontinued, none of the potential impacts (positive and negative) identified would occur. If the proposed project is to be discontinued, the current land use for the proposed site will remain unchanged.

This no-go option was considered and a comparative assessment of the environmental and socio-economic impacts of the “no action” alternative was undertaken to establish what benefits might be lost if the project is not implemented. The key losses that may never be realized if the proposed project does not go ahead include:



Excel Dynamic Solutions (Pty) Ltd

- Loss of foreign direct investment.
- About ten (10) temporary job opportunities for community members will not be realized.
- No realization of local businesses supports through the procurement of consumable items such as Personal Protective Equipment (PPE), machinery spare parts, lubricants, etc.
- Loss of potential income to local and national government through land lease fees, license lease fees and various tax structures.
- Improved geological understanding of the site area regarding the targeted commodities.
- Socio-economic benefits such as skills acquisition to local community members would be not realized.

Considering the above losses, the “no-action/go” alternative was not considered a viable option for this project, although, in the case where parts of the project site are considered environmentally sensitive and/or protected, one or severally sections of the site may be identified as no-go zones.

3.1.2 Exploration Location

The prospecting/exploration location is dependent on the geological setting (regional and local), the economic geology, and the exploration and mining history of the EPL area. Therefore, finding an alternative location for the planned exploration activities is not possible. This means that the mineralization of the target commodities (Base and Rare Metals (i.e. copper)) is area-specific, and exploration targets are primarily determined by the geology (host rocks) and the tectonic environment of the site (an ore-forming mechanism). The tenement has sufficient surface area for future related facilities, should an economic mineral deposit be defined.

Furthermore, the national mineral resources’ potential locations are also mapped and categorized by the Ministry of Mines and Energy, on exclusive prospecting licenses, mining licenses and claims, mineral deposit retention licenses, reconnaissance licenses and exclusive reconnaissance licenses. Available information on EPL 5851 (**Figure 3**) and other licenses are available on the Namibia Mining Cadastral Map here <https://portals.landfolio.com/namibia/>.

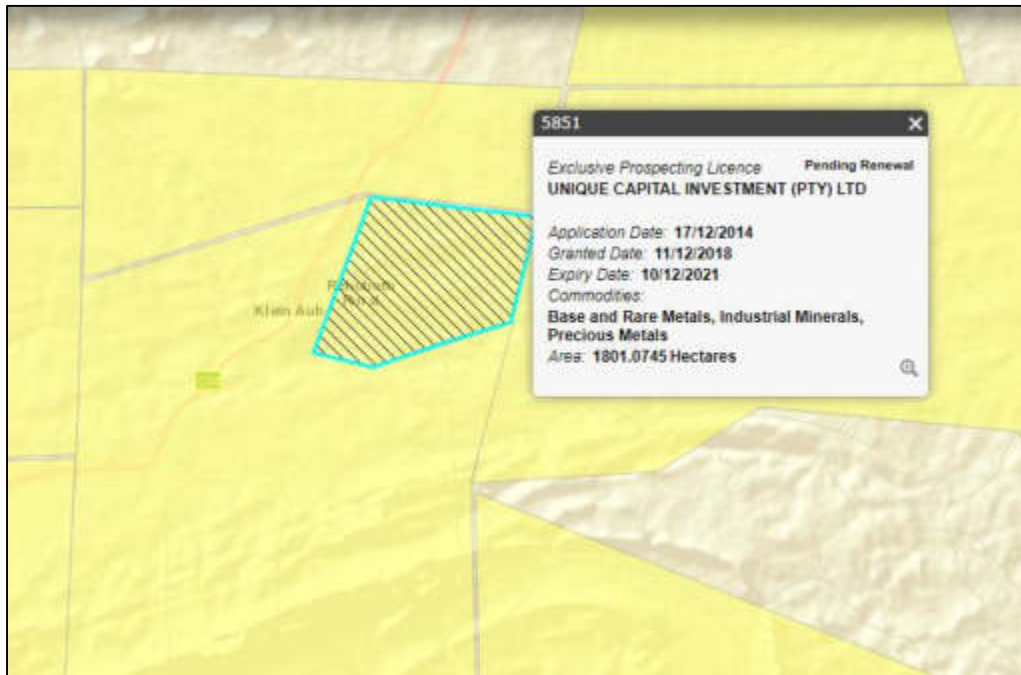


Figure 3: The location of EPL 5851 on the National Mining Cadastre

3.1.3 Exploration Methods

Both invasive and non-invasive exploration activities as indicated under the project description chapter are expected to take place. If an economically viable discovery is made, the project will proceed to the mining phase upon approval of a mining EIA and issuance of a mining license. If any other alternative viable exploration methods are found to achieve the purpose more effectively and/or efficiently without aggravating any environmental measures put in place, it can be implemented.

4 LEGAL FRAMEWORK: LEGISLATION, POLICIES AND GUIDELINES

Prospecting and exploration activities have legal implications associated to certain applicable legal standards. A summary of applicable and relevant international policies and Namibian legislation, policies and guidelines to the proposed development is given in this section (**Table 1**). This summary serves to inform the project Proponent, Interested and Affected Parties and the decision makers at the DEAF, of the requirements and expectations, as laid out in terms of these instruments, to be fulfilled to establish the proposed prospecting and exploration activities.



Excel Dynamic Solutions (Pty) Ltd

4.1 The Environmental Management Act (No. 7 of 2007)

This EIA was carried out according to the Environmental Management Act (EMA) and its Environmental Impact Assessment (EIA) Regulations (GG No. 4878 GN No. 30).

The EMA has stipulated requirements to complete the required documentation to obtain an Environmental Clearance Certificate (ECC) for permission to undertake certain listed activities.

These activities are listed under the following Regulations:

- 3.1 The construction of facilities for any process or activities which requires a license, right of other forms of authorization, and the renewal of a license, right or other form of authorization, in terms of the Minerals (Prospecting and Mining Act, 1992).
- 3.2 other forms of mining or extraction of any natural resources whether regulated by law or not.
- 3.3 Resource extraction, manipulation, conservation and related activities.

The Environmental Impact Assessment (EIA) Regulations GN 28-30 (GG 4878) detail requirements for public consultation within a given environmental assessment process (GN 30 S21). The EIA regulations also outline the required details of a Scoping Report (GN 30 S8) and an Assessment Report (GN 30 S15).

Other legal obligations that are relevant to the proposed activities of EPL No. 5851 and related activities are presented in Error! Reference source not found..

Table 1: Applicable local, national and international standards, policies and guidelines governing the proposed development



Legislation/Policy/ Guideline	Relevant Provisions	Implications for this project
<p>The Constitution of the Republic of Namibia, 1990 as amended</p>	<p>The Constitution of the Republic of Namibia (1990 as amended) addresses matters relating to environmental protection and sustainable development. Article 91(c) defines the functions of the Ombudsman to include:</p> <p>“...the duty to investigate complaints concerning the over-utilisation of living natural resources, the irrational exploitation of non-renewable resources, the degradation and destruction of ecosystems and failure to protect the beauty and character of Namibia...”</p> <p>Article 95(l) commits the state to actively promoting and maintaining the welfare of the people by adopting policies aimed at the:</p> <p>“...Natural resources situated in the soil and on the subsoil, the internal waters, in the sea, in the continental shelf, and in the exclusive economic zone are property of the State.”</p>	<p>By implementing the environmental management plan, the establishment will be in conformant to the constitution in terms of environmental management and sustainability.</p> <p>Ecological sustainability will be main priority for the proposed development.</p>



Legislation/Policy/ Guideline	Relevant Provisions	Implications for this project
Nature Conservation Amendment Act, No. 3 of 2017	National Parks are established and gazetted in accordance with the Nature Conservation Ordinance, 1975 (4 of 1975), as amended. The Ordinance provides a legal framework with regards to the permission of entering a state protected area, as well as requirements for individuals damaging objects (geological, ethnological, archaeological and historical) within a protected area. Though the Ordinance does not specifically refer to mining as an activity within a protected area (PA) or recreational area (RA), it does restrict access to PA's and prohibits certain acts therein as well as the purposes for which permission to enter game parks and nature reserves may be granted.	The Proponent will be required to enhance the conservation of biodiversity and the maintenance of the ecological integrity of protected areas and other State land
The Parks and Wildlife Management Bill of 2008	Aims to provide a regulatory framework for the protection, conservation, and rehabilitation of species and ecosystems, the sustainable use and sustainable management of indigenous biological resources, and the management of protected areas, in order to conserve biodiversity and in order to contribute to national development.	



Legislation/Policy/ Guideline	Relevant Provisions	Implications for this project
<p>Minerals (Prospecting and Mining) Act (No. 33 of 1992)</p>	<p>Section 52 requires mineral license holders to enter into a written agreement with affected landowners before exercising rights conferred upon the license holder.</p> <p>Section 52(1) mineral license holder may not exercise his/her rights in any town or village, on or in a proclaimed road, land utilized for cultivation, within 100m of any water resource (borehole, dam, spring, drinking trough etc.) and boreholes, or no operations in municipal areas, etc.), which should individually be checked to ensure compliance.</p> <p>Section 54 requires written notice to be submitted to the Mining Commissioner in the event that the holder of a mineral license (which includes and EPL) intends to abandon the mineral license area.</p>	<p>The Proponent should enter into a written agreement with landowners before carrying out exploration on their land.</p> <p>The Proponent should carry out an assessment of the impact on the receiving environment.</p> <p>The Proponent should include as part of their application for the EPL, measures by which they will rehabilitate the areas where they intend to carry out mineral exploration activities.</p> <p>The Proponent may not carry out exploration activities within the areas limited by Section 52 (1) of this Act.</p>



Legislation/Policy/ Guideline	Relevant Provisions	Implications for this project
	<p>Section 68 stipulates that an application for an EPL shall contain the particulars of the condition of, and any existing damage to, the environment in the area to which the application relates and an estimate of the effect which the proposed prospecting operations may have on the environment and the proposed steps to be taken in order to prevent or minimize any such effect.</p> <p>Section 91 requires that rehabilitation measures should be included in an application for a mineral license.</p>	
<p>Mine Health & Safety Regulations, 10th Draft</p>	<p>Makes provision for the health and safety of persons employed or otherwise present in mineral licenses area. These deal with among other matters; clothing and devices; design, use, operation, supervision and control of machinery; fencing and guards; and safety measures during repairs and maintenance.</p>	<p>The Proponent should comply with all these regulations with respect to their employees.</p>



Legislation/Policy/ Guideline	Relevant Provisions	Implications for this project
Petroleum Products and Energy Act (No. 13 of 1990) Regulations (2001)	Regulation 3(2)(b) states that “No person shall possess [sic] or store any fuel except under authority of a license or a certificate, excluding a person who possesses or stores such fuel in a quantity of 600 litres or less in any container kept at a place outside a local authority area”	The Proponent should obtain the necessary authorization from the MME for the storage of fuel on-site.
The Regional Councils Act (No. 22 of 1992)	. This Act sets out the conditions under which Regional Councils must be elected and administer each delineated region. From a land use and project planning point of view, their duties include, as described in section 28 “to undertake the planning of the development of the region for which it has been established with a view to physical, social and economic characteristics, urbanisation patterns, natural resources, economic development potential, infrastructure, land utilisation pattern and sensitivity of the natural environment.	The relevant Regional Councils are considered to be I&APs and must be consulted during the Environmental Assessment (EA) process. The project site falls under the Hardap Regional Council; therefore, they should be consulted.



Legislation/Policy/ Guideline	Relevant Provisions	Implications for this project
Local Authorities Act No. 23 of 1992	To provide for the determination, for purposes of traditional government, of traditional authority councils; the establishment of such traditional authority councils; and to define the powers, duties and functions of traditional authority councils; and to provide for incidental matters.	The Klein Aub Settlement is the responsible local Authority of the area therefore they should be consulted.
Water Act 54 of 1956	<p>The Water Resources Management Act 11 of 2013 is presently without regulations; therefore, the Water Act No 54 of 1956 is still in force:</p> <p>Prohibits the pollution of water and implements the principle that a person disposing of effluent or waste has a duty of care to prevent pollution (S3 (k)).</p> <p>Provides for control and protection of groundwater (S66 (1), (d (ii))).</p> <p>Liability of clean-up costs after closure/abandonment of an activity (S3 (l)). (l)).</p>	The protection (both quality and quantity/abstraction) of water resources should be a priority.
Water Resources Management Act (No 11 of 2013)	The Act provides for the management, protection, development, use and conservation of water resources; and provides for the regulation and monitoring of water services and to provide for incidental matters. The objects of this Act are to:	



Legislation/Policy/ Guideline	Relevant Provisions	Implications for this project
	<p>Ensure that the water resources of Namibia are managed, developed, used, conserved and protected in a manner consistent with, or conducive to, the fundamental principles set out in Section 66 - protection of aquifers, Subsection 1 (d) (iii) provide for preventing the contamination of the aquifer and water pollution control (Section 68).</p>	
<p>National Heritage Act No. 27 of 2004</p>	<p>To provide for the protection and conservation of places and objects of heritage significance and the registration of such places and objects; to establish a National Heritage Council; to establish a National Heritage Register; and to provide for incidental matters.</p>	<p>The Proponent should ensure compliance with these Acts requirements. The necessary management measures and related permitting requirements must be taken. This done by the consulting with the National Heritage Council of Namibia.</p>
<p>The National Monuments Act (No. 28 of 1969)</p>	<p>The Act enables the proclamation of national monuments and protects archaeological sites.</p>	<p>The National Heritage Council of Namibia.</p>
<p>Soil Conservation Act (No 76 of 1969)</p>	<p>The Act makes provision for the prevention and control of soil erosion and the protection, improvement and conservation of soil, vegetation and water supply sources and resources, through directives declared by the Minister.</p>	<p>Duty of care must be applied to soil conservation and management measures must be included in the EMP.</p>



Legislation/Policy/ Guideline	Relevant Provisions	Implications for this project
Public Health Act (No. 36 of 1919)	Section 119 states that “no person shall cause a nuisance or shall suffer to exist on any land or premises owned or occupied by him or of which he is in charge any nuisance or other condition liable to be injurious or dangerous to health.”	The Proponent and all its employees should ensure compliance with the provisions of these legal instruments.
Health and Safety Regulations GN 156/1997 (GG 1617)	Details various requirements regarding health and safety of labours.	
Road Traffic and Transport Act, No. 22 of 1999	The Act provides for the establishment of the Transportation Commission of Namibia; for the control of traffic on public roads, the licensing of drivers, the registration and licensing of vehicles, the control and regulation of road transport across Namibia's borders; and for matters incidental thereto. Should the Proponent wish to undertake activities involving road transportation or access onto existing roads, the relevant permits will be required.	Mitigation measures should be provided for, if the roads and traffic impact cannot be avoided, the relevant permits must be applied for.



Legislation/Policy/ Guideline	Relevant Provisions	Implications for this project
Labour Act (No. 6 of 1992)	Ministry of Labour (MOL) is aimed at ensuring harmonious labour relations through promoting social justice, occupational health and safety and enhanced labour market services for the benefit of all Namibians. This ministry insures effective implementation of the Labour Act no. 6 of 1992.	The Proponent should ensure that the prospecting and exploration activities do not compromise the safety and welfare of workers.
The United Nations Convention to Combat Desertification (UNCCD) 1992	Addresses land degradation in arid regions with the purpose to contribute to the conservation and sustainable use of biodiversity and the mitigation of climate change. The convention objective is to forge a global partnership to reverse and prevent desertification/land degradation and to mitigate the effects of drought in affected areas to support poverty reduction and environmental sustainability.	The project activities should not be such that they contribute to desertification.



Legislation/Policy/ Guideline	Relevant Provisions	Implications for this project
The International Finance Corporation (IFC) Performance Standards	The International Finance Corporation's (IFC) Sustainability Framework articulates the Corporation's strategic commitment to sustainable development and is an integral part of IFC's approach to risk management. The Sustainability Framework comprises IFC's Policy and Performance Standards on Environmental and Social Sustainability, and IFC's Access to Information Policy. The Policy on Environmental and Social Sustainability describes IFC's commitments, roles, and responsibilities related to environmental and social sustainability.	The Performance Standards are directed towards clients, providing guidance on how to identify risks and impacts, and are designed to help avoid, mitigate, and manage risks and impacts as a way of doing business in a sustainable way, including stakeholder engagement and disclosure obligations of the Client (Borrower) in relation to project-level activities.

4.2 International Policies, Principles, Standards, Treaties and Conventions

The international policies, principles, standards, treaties, and conventions applicable to the project are as listed in **Table 2** below.

Table 2: International Policies, Principles, Standards, Treaties and Convention applicable to the project

Statute	Provisions	Project Implications
Equator Principles	A financial industry benchmark for determining, assessing, and managing environmental and social risk in projects (August 2013). The Equator Principles have been developed in conjunction with the International Finance Corporation	These principles are an attempt to: ‘...encourage the development of socially responsible projects, which subscribe to



Statute	Provisions	Project Implications
	<p>(IFC), to establish an International Standard with which companies must comply with to apply for approved funding by Equator Principles Financial Institutions (EPFIs). The Principles apply to all new project financings globally across all sectors.</p> <p>Principle 1: Review and Categorization</p> <p>Principle 2: Environmental and Social Assessment</p> <p>Principle 3: Applicable Environmental and Social Standards</p> <p>Principle 4: Environmental and Social Management System and Equator Principles Action Plan</p> <p>Principle 5: Stakeholder Engagement</p> <p>Principle 6: Grievance Mechanism</p> <p>Principle 7: Independent Review</p> <p>Principle 8: Covenants</p> <p>Principle 9: Independent Monitoring and Reporting</p> <p>Principle 10: Reporting and Transparency</p>	<p>appropriately responsible environmental management practices with a minimum negative impact on project-affected ecosystems and community-based upliftment and empowering interactions.'</p>
<p>The International Finance Corporation (IFC) Performance Standards</p>	<p>The International Finance Corporation's (IFC) Sustainability Framework articulates the Corporation's strategic commitment to sustainable development and is an integral part of IFC's approach to risk</p>	<p>The Performance Standards are directed towards clients, providing guidance on how to identify risks and</p>



Statute	Provisions	Project Implications
	<p>management. The Sustainability Framework comprises IFC's Policy and Performance Standards on Environmental and Social Sustainability, and IFC's Access to Information Policy. The Policy on Environmental and Social Sustainability describes IFC's commitments, roles, and responsibilities related to environmental and social sustainability.</p> <p>As of 28 October 2018, there are ten (10) Performance Standards (Performance Standards on Environmental and Social Sustainability) that the IFC requires a project Proponents to meet throughout the life of an investment. These standard requirements are briefly described below.</p> <p>Performance Standard 1: Assessment and Management of Environmental and Social Risks and Impacts</p> <p>Performance Standard 2: Labour and Working Conditions</p> <p>Performance Standard 3: Resource Efficient and Pollution Prevention and Management</p> <p>Performance Standard 4: Community Health and Safety</p>	<p>impacts, and are designed to help avoid, mitigate, and manage risks and impacts as a way of doing business in a sustainable way, including stakeholder engagement and disclosure obligations of the Client (Borrower) in relation to project-level activities. In the case of its direct investments (including project and corporate finance provided through financial intermediaries), IFC requires its clients to apply the Performance Standards to manage environmental and social risks and impacts so that development opportunities are enhanced. IFC uses the Sustainability Framework along with other strategies, policies, and initiatives to direct the business</p>



Statute	Provisions	Project Implications
	<p>Performance Standard 5: Land Acquisition, Restrictions on Land Use, and Involuntary Resettlement</p> <p>Performance Standard 6: Biodiversity Conservation and Sustainable Management of Living Natural Resources</p> <p>Performance Standard 7: Indigenous Peoples/Sub-Saharan African Historically Underserved Traditional Local Communities</p> <p>Performance Standard 8: Cultural Heritage</p> <p>Performance Standard 9: Financial Intermediaries (FIs)</p> <p>Performance Standard 10: Stakeholder Engagement and Information</p> <p>A full description of the IFC Standards can be obtained from</p> <p>http://www.worldbank.org/en/projects-operations/environmental-and-social-framework/brief/environmental-and-social-standards?cq_ck=1522164538151#ess1</p>	<p>activities of the Corporation to achieve its overall development objectives.</p>
<p>The United Nations Convention to Combat Desertification (UNCCD) 1992</p>	<p>Addresses land degradation in arid regions with the purpose to contribute to the conservation and sustainable use of biodiversity and the mitigation of climate change.</p>	<p>The project activities should not be such that they contribute to desertification.</p>



Statute	Provisions	Project Implications
	<p>The convention objective is to forge a global partnership to reverse and prevent desertification/land degradation and to mitigate the effects of drought in affected areas to support poverty reduction and environmental sustainability United Nation Convention</p>	
<p>Convention on Biological Diversity 1992</p>	<p>Regulate or manage biological resources important for the conservation of biological diversity whether within or outside protected areas, with a view to ensuring their conservation and sustainable use.</p> <p>Promote the protection of ecosystems, natural habitats, and the maintenance of viable populations of species in natural surroundings</p>	<p>Removal of vegetation cover and destruction of natural habitats should be avoided and where not possible minimised</p>
<p>Stockholm Declaration on the Human Environment, Stockholm (1972)</p>	<p>It recognizes the need for: “a common outlook and common principles to inspire and guide the people of the world in the preservation and enhancement of the human environment.</p>	<p>Protection of natural resources and prevention of any form of pollution.</p>

Relevant international Treaties and Protocols ratified by the Namibian Government

- Convention on International Trade and Endangered Species of Wild Fauna and Flora (CITES), 1973.
- Convention on Biological Diversity, 1992.
- World Heritage Convention, 1972.



Excel Dynamic Solutions (Pty) Ltd

5 ENVIRONMENTAL BASELINE

The proposed exploration programme will be undertaken in specific environmental and social conditions. Understanding the pre-project conditions of the environment will aid in laying down background "information" of the status quo and future projections of environmental conditions after proposed works on the EPL. This also helps the EAP in identifying the sensitive environmental features that may need to be protected through the recommendations and effective implementation of mitigation measures provided.

The baseline information presented below is sourced from a variety of sources including reports of studies conducted in the Hardap Region. Further information was obtained by the Consultant during the site visit.

5.1 Biophysical Environment

5.2 Climate

Climate has a major influence on the exploration activities proposed on the EPL. Understanding of climatic conditions helps to determine the appropriate and/or inappropriate times to conduct exploration activities.

5.2.1 Rainfall

The highest amount of rainfall in the Klein Aub area is usually experienced in January which may reach an average of approximately 406.1 mm. Little to no rainfall periods are recorded from April to December with an average of 2.5 – 3.1 mm as indicated in **Figure 4**.



Excel Dynamic Solutions (Pty) Ltd

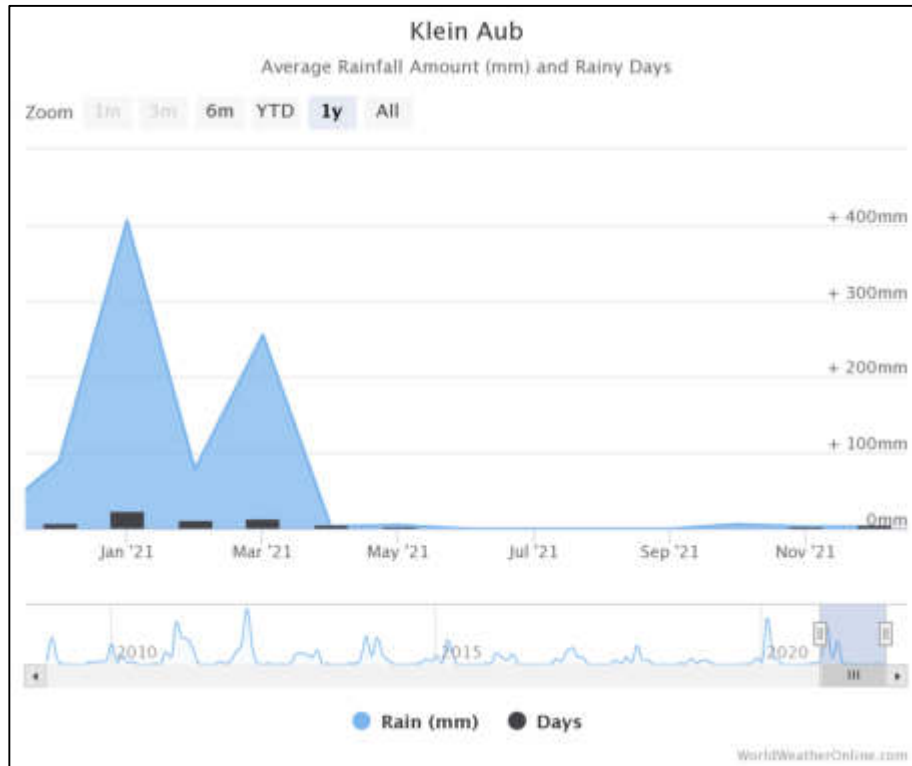


Figure 4: A graph showing monthly average rainfall patterns for the project area (Source: <https://en.climate-data.org/>).

5.2.2 Temperature

Klein Aub has a distinct temperature seasons and the temperature varies during the year. The month of November is the warmest with an average temperature of 33 °C. June is the coldest month with an average temperature of 8 °C at night. **Figure 5.**

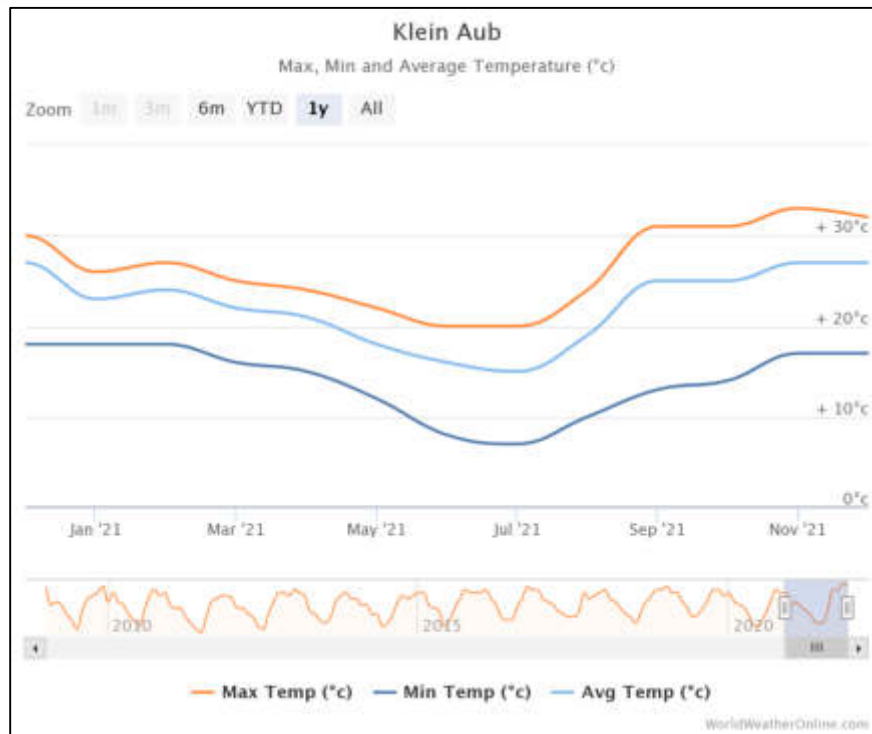


Figure 5: A graph showing monthly average temperature patterns for the project area (Source: <https://en.climate-data.org/>).

5.2.3 Winds

Strong winds in the Klein Aub area is usually experienced in October which may reach an average of approximately 16.3 kmph. weak winds are recorded in March with an average of 9.7 kmph as indicated in **Figure 6**.

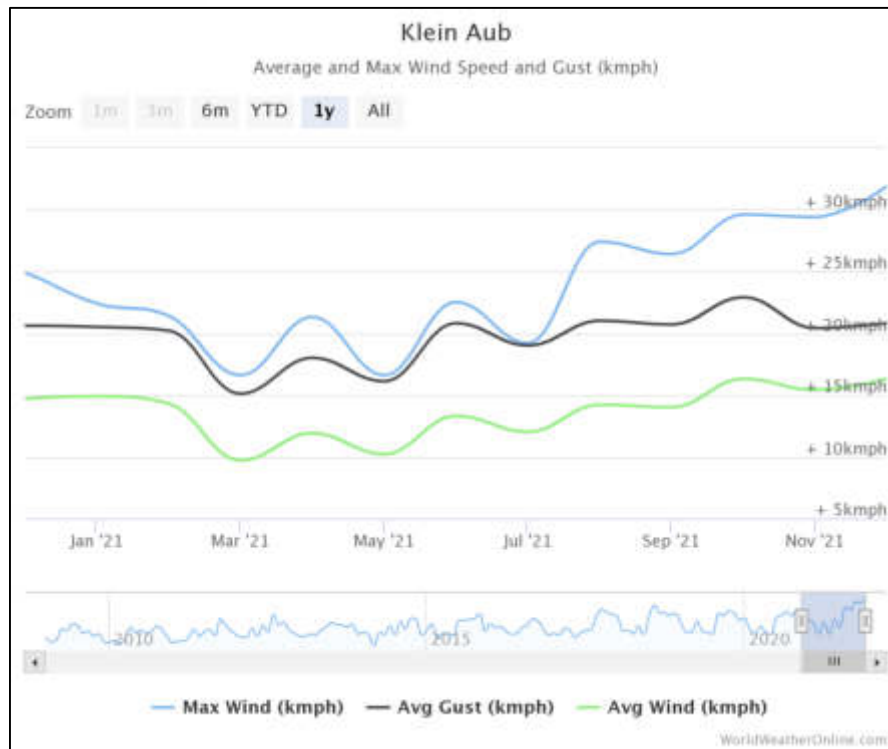


Figure 6: A graph showing average monthly wind speed in the project area (Source: <https://en.climate-data.org/>).

5.2.4 Relative Humidity

The relative humidity during the least humid months of the year, i.e. September, is at around 16% and the most humid month is January with about 59% humidity. Namibia has a low humidity in general, and the lack of moisture in the air has a major impact on its climate by reducing cloud cover and rain increases the rate of evaporation (Mendelsohn, 2002). **Figure 7** depicts the humidity patterns in the Klein Aub area.

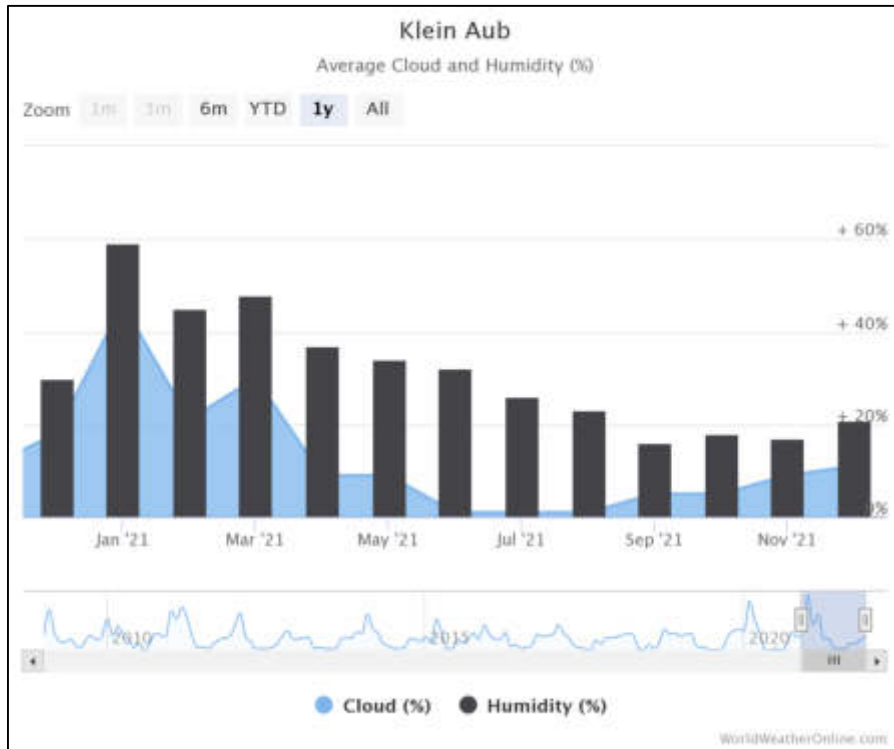


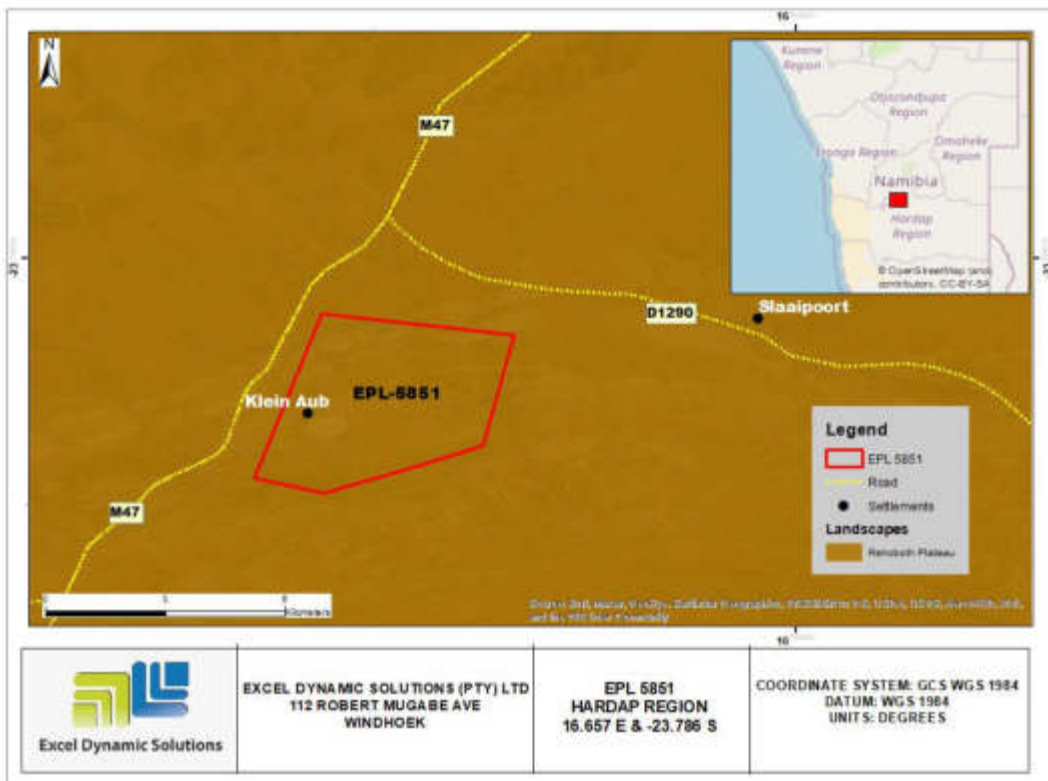
Figure 7: A graph showing relative humidity patterns in the project area (Source: <https://en.climate-data.org/>).

5.3 Topography

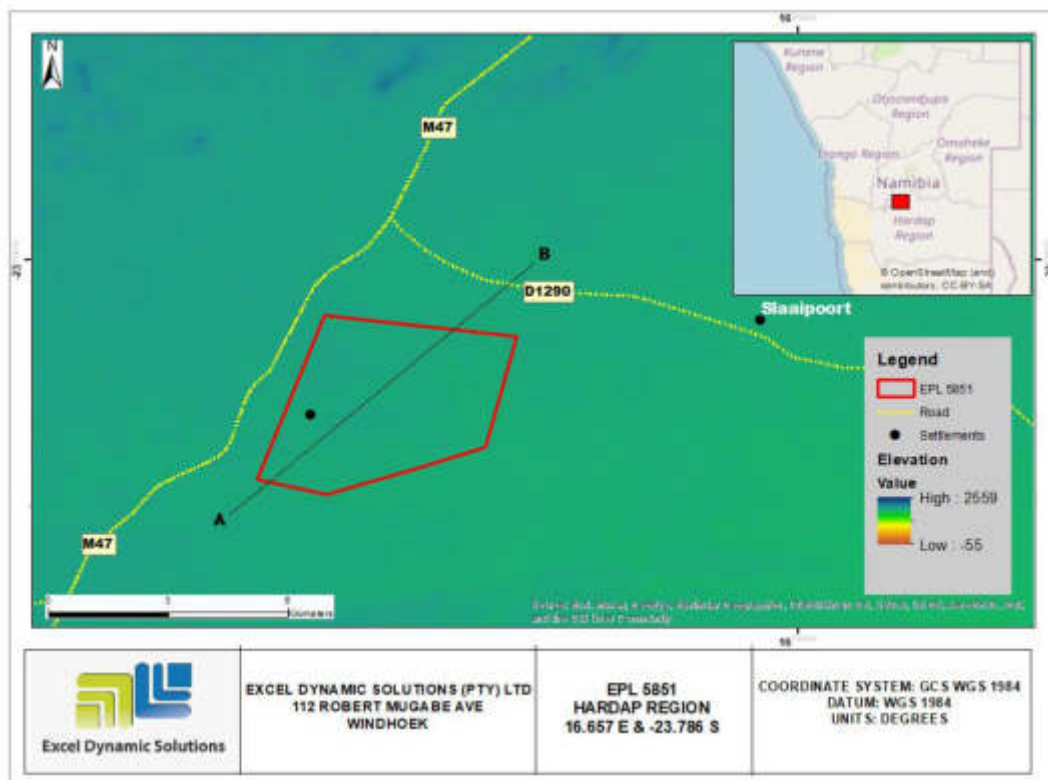
The EPL 5851 is located within the Rehoboth Plateau where many inselbergs are found. The altitudes ranges between 1, 500 m and 1, 700 m above sea level, are slightly higher in the north and west of the region. Granites and complexes of metamorphic rocks underlie the plateau in most areas, (Mendelsohn, 2003). **Figures 8a, 8b** and **8c** below show the landscape map, Elevation Model and the cross-section graph SW to NE direction.



Excel Dynamic Solutions (Pty) Ltd



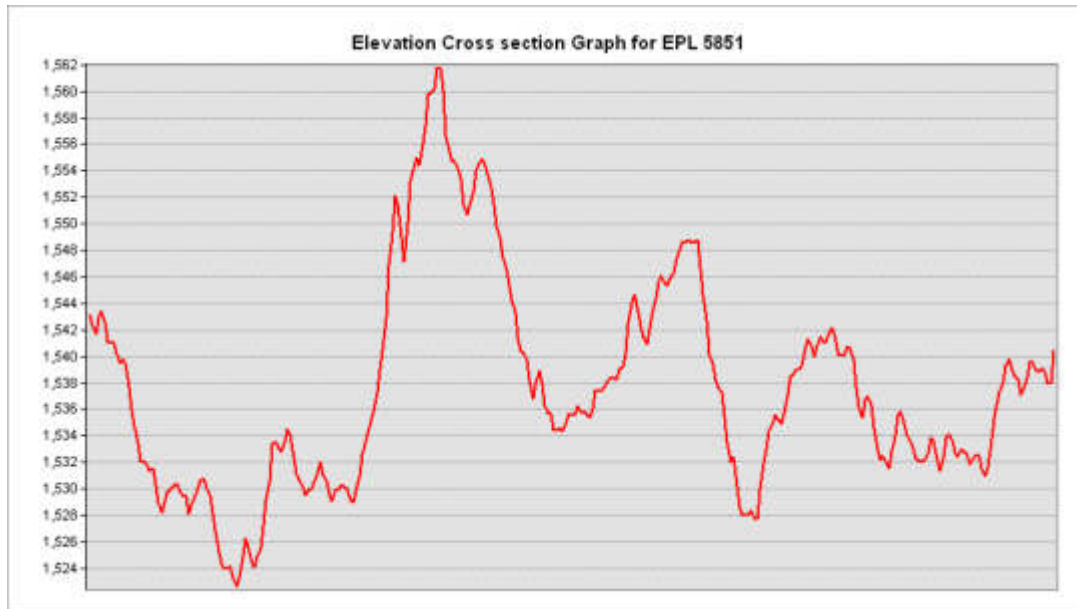
(a)



(b)



Excel Dynamic Solutions (Pty) Ltd



(C)

Figure 8: 8a: Landscape of project area; 8b: Elevation 3D Model of project area & 8c: Cross Section graph

5.4 Geology and Soil

Geology

Geologically, the EPL area is hosted by strata of the Kagas Member of the Klein Aub Formation. The absolute age of this unit is uncertain. It is assigned to the Tsumis Group, which unconformably overlies Paleoproterozoic to Mesoproterozoic rocks of the Rehoboth Inlier and is disconformably overlain by Neoproterozoic strata of the Damara sequence (Kent and SACS, eds., 19030; Hoffman, 1989; Becker and Schalk, 2008).

The Klein Aub Formation consisting mainly of medium to fine clastic sedimentary rocks and subordinate carbonates, represents a sag phase of basin development. The Kagas Member consists of quartzite and green slate, overlain by argillite, sandstone, marl, and limestone, with beds of dark-coloured dolomitic argillite which potential host the copper-silver deposits in the area.

Figure 9 below shows the general geology map for the project.

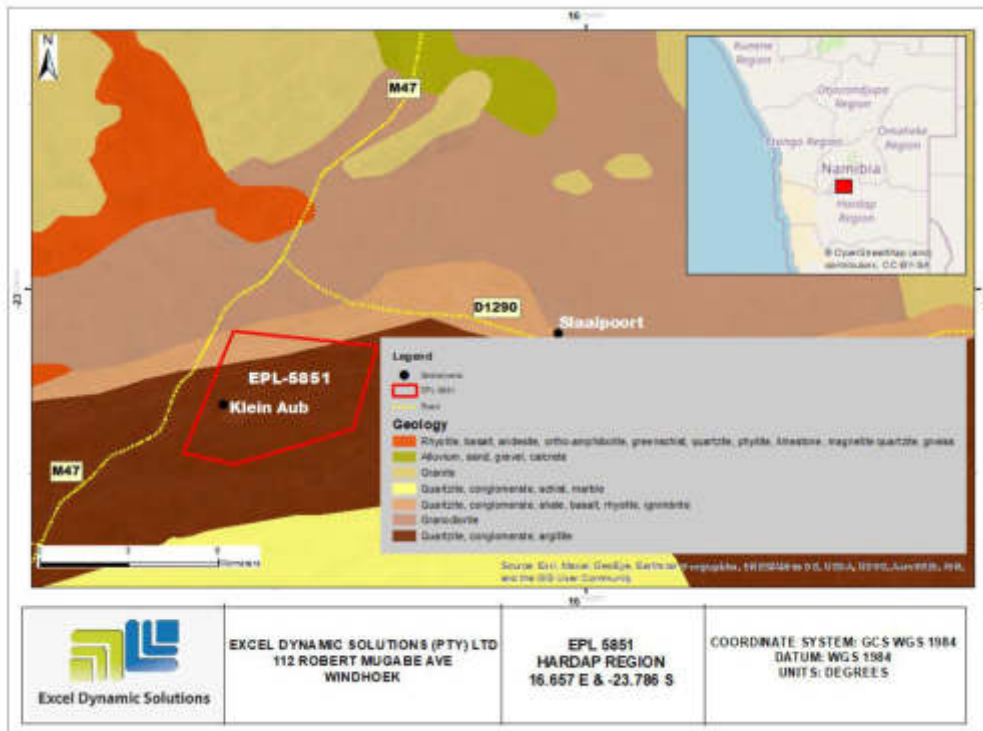


Figure 9: A map of the general geology of the project area

Soil

The EPL lies within the Eutric Leptosols soil which typically form in an actively eroding landscapes, especially in the hilly or undulating areas that cover much of the EPL area. These coarse-textured soils are characterized by their limited depth caused by the presence of a continuous hard-rock, highly calcareous or cemented layer within 30 cm of the surface. The Eutric Leptosols are, therefore, the shallowest soils to be found in Namibia and they often contain much gravel, (Mendelsohn, 2003). **Figure 10** below shows the soil types found within the EPL area.



Excel Dynamic Solutions (Pty) Ltd

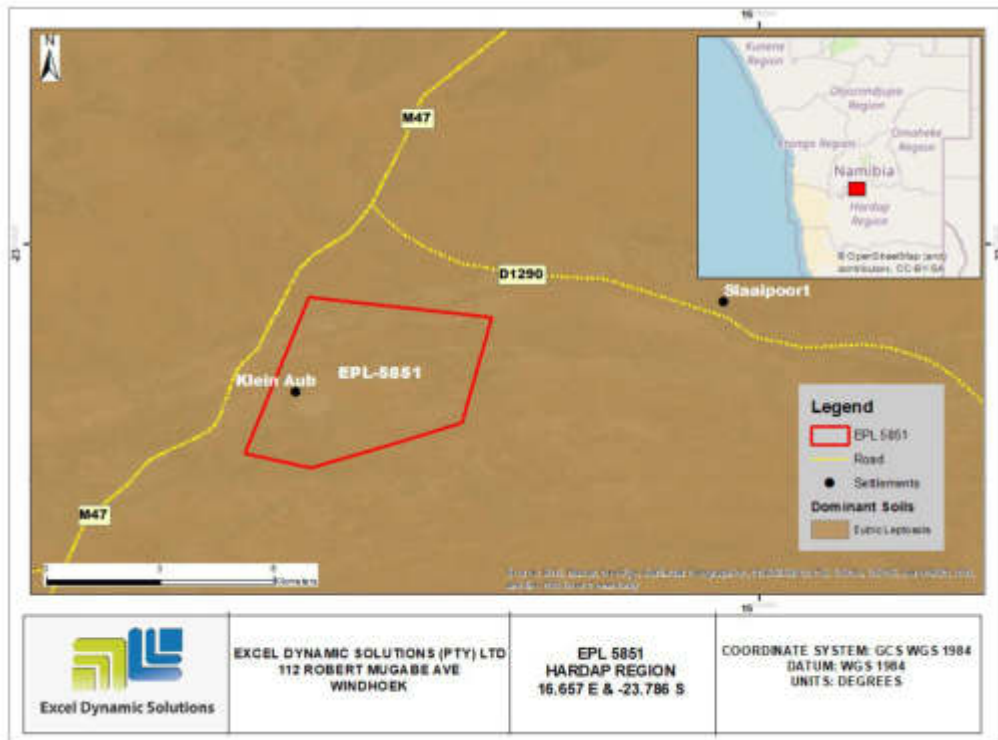


Figure 10: shows the dominant soil types found within the EPL



Figure 11: Eutric Leptosols soil with visible hard-rocks around the project area.

5.5 Hydrology and Water Resources

In terms of surface water/ hydrology, the Kam River cuts the EPL on its far south- west section. With regards to groundwater (hydrogeology), the EPL is mainly covered by rock bodies with little groundwater potential aquifer, and their fractured nature potentially allow the storage, transmission and flow of groundwater. Therefore, the rocks are good aquifers. **Figure 12** shows the hydrology map of the EPL area.

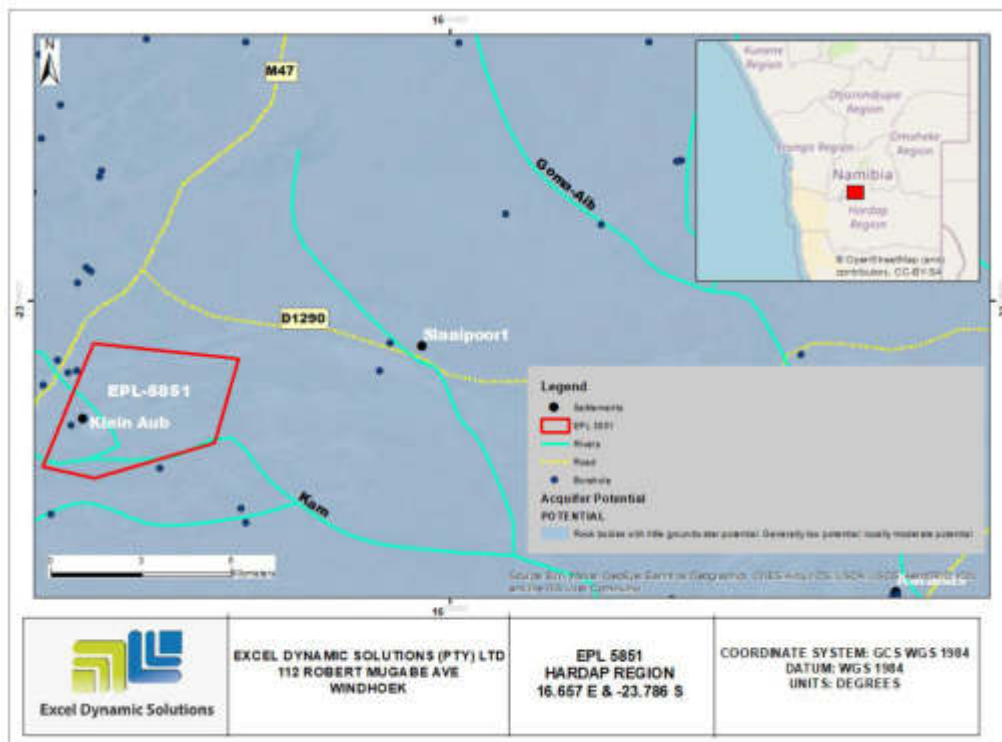


Figure 12: shows the hydrology map of the project area

5.6 Flora and Fauna

Flora



Excel Dynamic Solutions (Pty) Ltd

The EPL area lies with an areas dominated by the Acacia Hereroensis plant species, also commonly known as the Mountain thorn. The Acacia Hereroensis is a wispy tree or shrub with an open airy canopy; occasionally a large tree with dark, fissured bark and a rounded canopy. Thorns are fine, hooked, in pairs, single or sometimes absent, may appear scattered. Their leaves are long, narrow, with small compact leaflets, (Mannheimer, 2005). **Figure 13** below shows the vegetation map and **Figure 14** shows vegetation observed during site visit.

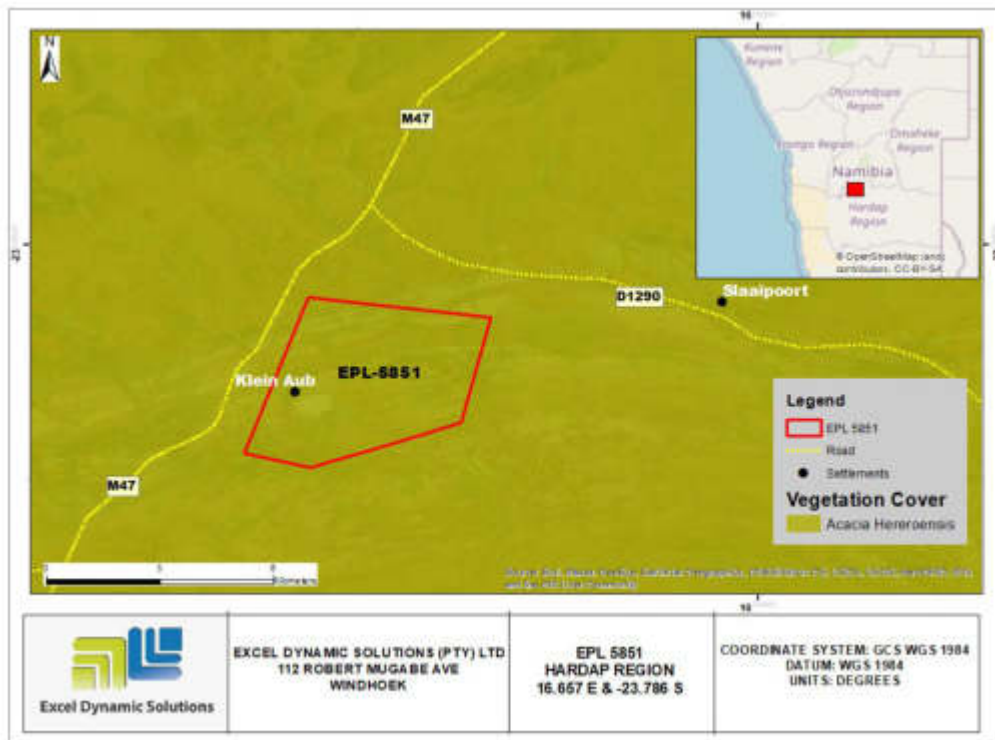


Figure 13: Vegetation map around the EPL 5851



Figure 14: Acacia Hereroensis Vegetation cover (red rectangle) with the EPL area.

In terms of fauna, during the public consultation conducted on the 15th February 2022. Generally, the EPL area is mostly surrounded by animals such as donkey, goats and horses.



Figure 15: Animal dug (donkey dug) observed during the site visit on 15th February 2022.

5.7 Heritage and Archaeology

5.7.1 Local Level and Archaeological Findings

It should be noted that Klein Aub derives most of its historical and heritage from the late 1950's to early 1960's when copper mining started flourishing. According to Melanie Bothers who owns a family farm # 350 within the EPL, most people began to move in the area 50 years ago due to the presence of copper mine activities and works. Her own family (ancestors) moved in to Klein Aub over 50 years ago, and established themselves here. Therefore, most of the findings in the area are deemed to be part of historical and heritage of Klein Aub.

The field survey involved direct observation (site surface or field walking), with historical and heritage sites positions determined in the field by hand-held Garmin *etrex* 30x GPS, and the coordinates plotted on topographic map to create a buffer-zone (**Figure 16**). The archaeological sites are documented according to conventional criteria of type, physical setting and spatial extent. In the field, all identified historical sites are assessed as to their significance, grading them



accordingly and vulnerability, using two independent parallel scales devised for archaeological assessment in Namibia. The historical sites and built heritage structures within this EPL 5851 are of heritage significance at a local and regional level according to the locals, and thus vulnerability rating can be classified as having probable threat from inadvertent disturbance due to proximity of development.

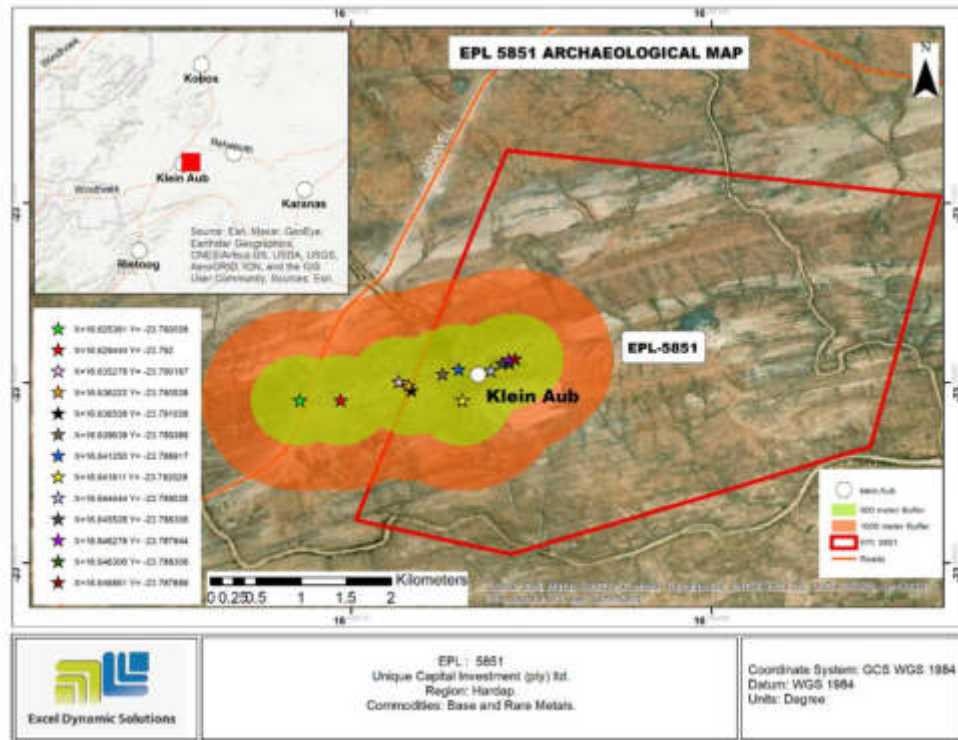


Figure 16: Map showing mapped areas of 1.5 km buffer zone created for located historical sites

5.8 Surrounding Land Uses

The EPL falls within 100% of Klein Aub Settlement boundary as shown in **Figure 17**. The Proponent is required to secure a signed agreement from the affected landowners and farmers to gain access to the areas of interest for prospecting and exploration investigations as per the Section 52 of the Minerals (Prospecting and Mining) Act No. 33 of 1992 and Section 2.2.3 of the Minerals Policy of Namibia.

1. *Section 52 (1) The holder of mineral licence shall not exercise any rights conferred upon such holder by this Act or under any terms and conditions of such mineral licence –*



Excel Dynamic Solutions (Pty) Ltd

(a) In, on or under any and until such time as such holder has entered into an agreement in writing with the owner of such land containing terms and conditions relating to the payment of compensation, or the owner of such land has in writing waked any right to such compensation and has submitted a copy of such agreement or waiver to the Commissioner.

Section 2.2.3 of the Draft Minerals Policy of Namibia states that the Licence Holder and/or mineral explorers currently have to negotiate a contract with landowners to gain access for or mining purposes.

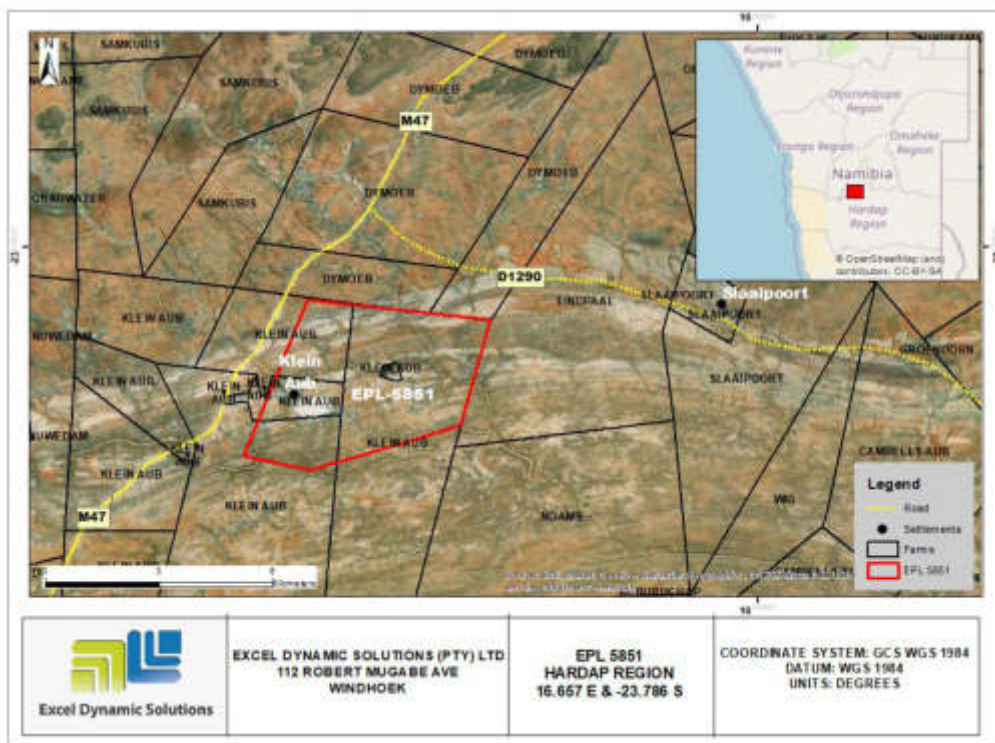


Figure 17: Map showing land use within and surrounding the EPL

5.9 Socio-Economic conditions

Approximately 3, 000 people reside permanently in Klein Aub. Klein Aub could be considered for developing into a village as the settlement is having growth potentials. These settlement has a permanent clinic, special education school, post and telecommunication offices, a couple of

general dealers, churches, a police officer and various dwelling structures for the local inhabitants. With mineral resources found within the vicinity of the settlement, a mine used to operate on the site, extracting silver, copper and gold until its closure in 1987. This was one the major sources of income for the settlement.

Water and electricity infrastructures are in satisfactory condition as the water reticulation system has been updated and the settlement has been connected to the main electricity network as part of rural electrification programme. Income is predominantly derived from local officials, surrounding small farmers and dependents working in Rehoboth and Windhoek (HRC, 2022), **Figure 18** below shows some services and Infrastructures around the vicinity of the project which contributes to the socio- economic condition of Klein Aub.



Figure 18: Services and Infrastructures around the project area (source: NSA, 2022).

Other Infrastructures with the EPL 5851:



Excel Dynamic Solutions (Pty) Ltd



Old transformers that used to provide electricity for copper mine



Some derelict buildings



Excel Dynamic Solutions (Pty) Ltd



(Left) Vandalized underground tunnel at waypoint 179. (Right) A remnant of a structure used for electrical facility.

6 PUBLIC CONSULTATION PROCESS

Public consultation forms an important component of an Environmental Assessment (EA) process. It provides potential Interested and Affected Parties (I&APs) with an opportunity to comment on and raise any issues relevant to the project for consideration as part of the assessment process, thus assisting the Environmental Assessment Practitioner (EAP) in identifying all potential impacts and to what extent further investigations are necessary. Public consultation can also aid in the process of identifying possible mitigation measures. Public consultation for this scoping study has been done in accordance with the EMA and its EIA Regulations.

6.1 Pre-identified and Registered Interested and Affected Parties (I&APs)

Relevant and applicable national, regional, and local authorities, local leaders, and other interested members of the public were identified. Pre-identified I&APs were contacted directly,



Excel Dynamic Solutions (Pty) Ltd

while other parties who contacted the Consultant after project advertisement notices in the newspapers, were registered as I&APs upon their request. Newspaper advertisements of the proposed exploration activities were placed in two widely-read national newspapers in the region (*The Namibian Newspaper* and *New Era Newspaper*). The project advertisement/announcement ran for two consecutive weeks inviting members of the public to register as I&APs and submit their comments. The summary of pre-identified and registered I&APs is listed in **Table 3** below and the complete list of I&APs is provided in **Appendix D**.

Table 3: Summary of Interested and Affected Parties (I&APs)

National (Ministries and State-Owned Enterprises)
Ministry of Environment, Forestry and Tourism
Ministry of Mines and Energy
Ministry of Health and Social Services
Regional, Local and Traditional Authorities
Hardap Regional Council
Klein Aub Local Authority
General Public
land owners /Interested members of the public
Namibia Community Based Tourism Association

6.2 Communication with I&APs

Regulation 21 of the EIA Regulations details the steps to be taken during a public consultation process and these have been used in guiding this process. Communication with I&APs with regards to the proposed development was facilitated through the following means and in this order:



Excel Dynamic Solutions (Pty) Ltd

- A Background Information Document (BID) containing brief information about the proposed facility was compiled (**Appendix E**) and hand delivered to relevant Authoritative Ministries, and upon request to all new registered Interested and Affected Parties (I&APs);
- Project Environmental Assessment notices were published in *The Namibian newspaper* (**17 January 2022** and **24 January 2022**) and *New Era* (**17 January 2022** and **24 January 2022**) (**Appendix F**), briefly explaining the activity and its locality, inviting members of the public to register as I&APs and submit their comments/concerns;
- Public notices were placed at frequented places at Klein Aub Settlement Office (**Figure 19**) to inform members of the public of the EIA process and register as I&APs, as well as submit comments.
- A public meeting was scheduled and held on **15 February 2022**, at Klein Aub Community Hall in Klein Aub at 12:15.



Figure 19: Public notices placed at Klein Aub Settlement Office, Klein Aub, Hardap Region



Excel Dynamic Solutions (Pty) Ltd



Unique Capital Investment (Pty) Ltd: EPL No. 5851

Figure 20: Public meeting scheduled on 15 February 2022 at Klein Aub Community Hall, Klein Aub

Issues were raised by affected and interested parties and these issues have been recorded and incorporated in the environmental report and EMP. The summarized issues raised during the public meeting are presented in **Table 4** below. The issues raised and responses by EDS are attached under **Appendix G** and **H**

Table 4: Summary of main issues and comments received during the first public meeting engagements

Issue	Concern
Water Scarcity	The Area has very limited groundwater. Thus, abstraction should be limited in the area.
Groundwater Pollution	Klein Aub has poor water quality and groundwater pollution during exploration should strongly be enforced.
Livestock theft	Livestock theft is very high in the area and strong mitigation measures to avoid livestock theft should be enforced.
Rehabilitation	Non-rehabilitation drilling holes is common in Klein Aub. Therefore, rehabilitation should be taken serious as animals tend to fall in the drilling holes and die.



Excel Dynamic Solutions (Pty) Ltd

7 IMPACT IDENTIFICATION, ASSESSMENT AND MITIGATION MEASURES

7.1 Impact Identification

Proposed developments/activities are usually associated with different potential positive and/or negative impacts. For an environmental assessment, the focus is placed mainly on the negative impacts. This is done to ensure that these impacts are addressed by providing adequate mitigation measures such that an impact's significance is brought under control, while maximizing the positive impacts of the development. The potential positive and negative impacts that have been identified from the prospecting activities are listed as follow:

Positive impacts:

- Creation of jobs to the locals (primary, secondary and tertiary employment).
- Producing of a trained workforce and small businesses that can service communities and may initiate related businesses
- Boosting of the local economic growth and regional economic development.
- Open up other investment opportunities and infrastructure-related development benefits

Negative impacts:

- Disturbance to the grazing area
- Land degradation and Biodiversity Loss.
- Generation of dust
- Water Resources Use
- Soil & Water Resources Pollution
- Waste Generation
- Occupational Health & Safety risks
- Vehicular Traffic Use & Safety
- Noise & Vibrations
- Disturbance to Archaeological & Heritage Resources
- Impacts on local Roads
- Social Nuisance: local property intrusion & disturbance
- Social Nuisance: Job seeking & differing Norms, Culture & values

- Impacts associate with closure and decommissioning of exploration works

7.2 Impact Assessment Methodology

The Environmental Assessment process primarily ensures that potential impacts that may occur from project activity are identified, and addressed with environmentally cautious approaches and legal compliance. The impact assessment method used for this project is in accordance with Namibia's Environmental Management Act (No. 7 of 2007) and its Regulations of 2012, as well as the International Finance Corporation (IFC) Performance Standards.

The identified impacts were assessed in terms of scale/extent (spatial scale), duration (temporal scale), magnitude (severity) and probability (likelihood of occurring), as presented in **Table 5**, **Table 6**, **Table 7** and **Table 8**, respectively.

In order to enable a scientific approach to the determination of the environmental significance, a numerical value is linked to each rating scale. This methodology ensures uniformity and that potential impacts can be addressed in a standard manner so that a wide range of impacts are comparable. It is assumed that an assessment of the significance of a potential impact is a good indicator of the risk associated with such an impact. The following process will be applied to each potential impact:

- Provision of a brief explanation of the impact;
- Assessment of the pre-mitigation significance of the impact; and
- Description of recommended mitigation measures.

The recommended mitigation measures prescribed for each of the potential impacts contribute towards the attainment of environmentally sustainable operational conditions of the project for various features of the biophysical and social environment. The following criteria were applied in this impact assessment:

7.2.1 Extent (spatial scale)

Extent is an indication of the physical and spatial scale of the impact. **Table 5** shows rating of impact in terms of extent of spatial scale.

Table 5: Extent or spatial impact rating



Low (1)	Low/Medium (2)	Medium (3)	Medium/High (4)	High (5)
Impact is localized within the site boundary: Site only	Impact is beyond the site boundary: Local	Impacts felt within adjacent biophysical and social environments: Regional	Impact widespread far beyond site boundary: Regional	Impact extend National or over international boundaries

7.2.2 Duration

Duration refers to the timeframe over which the impact is expected to occur, measured in relation to the lifetime of the project. **Table 6** shows the rating of impact in terms of duration.

Table 6: Duration impact rating

Low (1)	Low/Medium (2)	Medium (3)	Medium/High (4)	High (5)
Immediate mitigating measures, immediate progress	Impact is quickly reversible, short term impacts (0-5 years)	Reversible over time; medium term (5-15 years)	Impact is long-term	Long term; beyond closure; permanent; irreplaceable or irretrievable commitment of resources

7.2.3 Intensity, Magnitude / severity

Intensity refers to the degree or magnitude to which the impact alters the functioning of an element of the environment. The magnitude of alteration can either be positive or negative. These ratings were also taken into consideration during the assessment of severity. **Table 7** shows the rating of impact in terms of intensity, magnitude or severity.

Table 7: Intensity, magnitude or severity impact rating

Type of criteria	Negative				
	H- (10)	M/H- (8)	M- (6)	M/L- (4)	L- (2)
Qualitative	Very high deterioration, high quantity	Substantial deterioration, death, illness	Moderate deterioration, discomfort,	Low deterioration, slight	Minor deterioration, nuisance or



Type of criteria	Negative				
	H- (10)	M/H- (8)	M- (6)	M/L- (4)	L- (2)
	of deaths, injury of illness / total loss of habitat, total alteration of ecological processes, extinction of rare species	or injury, loss of habitat / diversity or resource, severe alteration or disturbance of important processes	partial loss of habitat / biodiversity or resource, moderate alteration	noticeable alteration in habitat and biodiversity. Little loss in species numbers	irritation, minor change in species / habitat / diversity or resource, no or very little quality deterioration.

7.2.4 Probability of occurrence

Probability describes the likelihood of the impacts actually occurring. This determination is based on previous experience with similar projects and/or based on professional judgment. **Table 8** shows impact rating in terms of probability of occurrence.

Table 8: Probability of occurrence impact rating

Low (1)	Medium/Low (2)	Medium (3)	Medium/High (4)	High (5)
Improbable; low likelihood; seldom. No known risk or vulnerability to natural or induced hazards.	Likely to occur from time to time. Low risk or vulnerability to natural or induced hazards	Possible, distinct possibility, frequent. Low to medium risk or vulnerability to natural or induced hazards.	Probable if mitigating measures are not implemented. Medium risk of vulnerability to natural or induced hazards.	Definite (regardless of preventative measures), highly likely, continuous. High risk or vulnerability to natural or induced hazards.

7.2.5 Significance

Impact significance is determined through a synthesis of the above impact characteristics. The significance of the impact “without mitigation” is the main determinant of the nature and degree of mitigation required. As stated in the introduction to this section, for this assessment, the significance of the impact without prescribed mitigation actions is measured.

Once the above factors (**Table 5**, **Table 6**, **Table 7** and **Table 8**) have been ranked for each potential impact, the impact significance of each is assessed using the following formula:

SIGNIFICANCE POINTS (SP) = (MAGNITUDE + DURATION + SCALE) X PROBABILITY

The maximum value per potential impact is 100 significance points (SP). Potential impacts were rated as high, moderate or low significance, based on the following significance rating scale (Table 9).

Table 9: Significance rating scale

<i>Significance</i>	<i>Environmental Significance Points</i>	<i>Colour Code</i>
High (positive)	>60	H
Medium (positive)	30 to 60	M
Low (positive)	1 to 30	L
Neutral	0	N
Low (negative)	-1 to -30	L
Medium (negative)	-30 to -60	M
High (negative)	<-60	H

Positive (+) – Beneficial impact

Negative (-) – Deleterious/ adverse+ Impact

Neutral – Impacts are neither beneficial nor adverse

For an impact with a significance rating of high (-ve), mitigation measures are recommended to reduce the impact to a medium (-ve) or low (-ve) significance rating, provided that the impact with a medium significance rating can be sufficiently controlled with the recommended mitigation measures. To maintain a low or medium significance rating, monitoring is recommended for a period of time to enable the confirmation of the significance of the impact as low or medium and under control.



Excel Dynamic Solutions (Pty) Ltd

The assessment of the exploration phases is done for pre-mitigation and post-mitigation.

The risk/impact assessment is driven by three factors:

Source: The cause or source of the contamination.

Pathway: The route taken by the source to reach a given receptor

Receptor: A person, animal, plant, eco-system, property or a controlled water source. If contamination is to cause harm or impact, it must reach a receptor.

A pollutant linkage occurs when a source, pathway and receptor exist together. Mitigation measures aim firstly, avoid risk and if the risk cannot be avoided, mitigation measures to minimize the impact are recommended. Once mitigation measures have been applied, the identified risk would reduce to lower significance (Booth, 2011).

This assessment focuses on the three project phases namely; the prospecting, exploration (and possible analysis) and decommissioning. The potential negative impacts stemming from the proposed activities of the EPL are described, assessed and mitigation measures provided thereof. Further mitigation measures in a form of management action plans are provided in the Draft Environmental Management Plan.

7.3 Assessment of Potential Negative Impacts

The main potential negative impacts associated with the operation and maintenance phase are identified and assessed below:

7.3.1 Disturbance to the grazing areas

The EPL is overlying commercial farms that practice livestock and game farming, the invasive exploration activities such as site clearing, trenching, and drilling can potentially lead to the disturbance of grazing land. This will potentially affect the grazing areas available to the farms' livestock and wildlife, and since the farmers greatly depend on these types of farming for subsistence and commercial purposes, this would have an impact on their livelihood through potential feeding/grazing for animals and eventual losses.

The effect of exploration work on the land (when done over a wider spatial extent), if not mitigated, may hinder animal husbandry in the area and its surrounding. The project area might experience loss of its pastoral system over time. Losing grazing pastures for livestock and wildlife minimizes the number of animals on the farms and overall farming activity in the area, and lead to loss of



livelihoods. Under the status quo, the impact can be of a medium significance rating. With the implementation of appropriate mitigation measures, the rating will be reduced to a lower significance. The impact is assessed in **Table 10** below.

Table 10: Assessment of the impacts of exploration on grazing areas

Mitigation Status	Extent	Duration	Intensity	Probability	Significance
Pre mitigation	M: -3	M: -3	M/L: -4	M/H: 4	M: -40
Post mitigation	L/M: -2	L/M: -2	L/M: -4	L/M: 2	L: -16

Mitigations and recommendation to lower the possibility of disturbance and loss of the Pastoral system

- Any unnecessary removal or destruction of grazing land, due to exploration activities should be avoided.
- Vegetation found on the site, but not in the targeted exploration areas should not be removed but left to preserve biodiversity and grazing land.
- Workers should refrain from driving off road and creating unnecessary tracks that may contribute to the loss of grazing land.
- Environmental awareness on the importance of the preservation of grazing land for local livestock should be provided to the workers.

7.3.2 Land Degradation and Loss of Biodiversity

Fauna: The trenching, pitting and drilling activities done for detailed exploration would result in land degradation, leading to habitat loss for a diversity of flora and fauna ranging from microorganisms to large animals and vegetation. Endemic species are most severely affected since even the slightest disruption in their habitat can results in extinction or put them at high risk of being wiped out.

The presence and movement of the exploration workforce and operation of project equipment and heavy vehicles would disturb not only the domestic animals (livestock) grazing at the explored sites of the EPL, but also the wildlife present on the explored farms. Not only the disturbance due



to human and vehicle movements, but also potential illegal hunting (poaching) of local wildlife by project related workers. This could lead to loss or number reduction of specific faunal species which also impacts tourism in the community (for tourists who are interested in wildlife seeing when driving through the area).

Another potential activity that will impact the faunal community is the un-rehabilitated and/or unfenced boreholes, trenches and pits used for exploration (once they are no longer in use). If these holes and pits/trenches are not fenced off or closed off by rehabilitating them, they could pose a high risk of site domestic and wild animals falling into these holes and pits, causing injuries and potentially mortalities.

Flora: According to Kanime and Kamwi (2021), the direct impacts on flora and vegetation communities will mainly occur through clearing for the exploration access roads and associated infrastructure. The dust emissions from drilling may affect surrounding vegetation through the fall of dust. Some loss of vegetation is an inevitable consequence of the development. However, given the abundance of the shrubs and site-specific areas of exploration on the EPL, the impact will be localized, therefore manageable.

Under the status, the impact can be of a medium significance rating. With the implementation of appropriate mitigation measures, the rating will be reduced to a low significance rating. The impact is assessed in **Table 11** below.

Table 11: Assessment of the impacts of exploration on biodiversity

Mitigation Status	Extent	Duration	Intensity	Probability	Significance
Pre mitigation	M: -3	M: -3	M: -6	M/H: 4	M: -48
Post mitigation	L/M: -2	L/M: -2	L/M: -4	L/M: 2	L: -16

Mitigations and recommendation to minimize the loss of biodiversity

- The Proponent should avoid unnecessary removal of vegetation, thus promoting a balance between biodiversity and their operations.
- Vegetation found on the site, but not in the targeted exploration site areas should not be removed but left to preserve biodiversity on the site.



Excel Dynamic Solutions (Pty) Ltd

- Shrubs or trees found along trenching, drilling, or sampling spots on sites should not be unnecessarily removed.
- Movement of vehicle and machinery should be restricted to existing roads and tracks to prevent unnecessary damage to the vegetation.
- No onsite vegetation should be cut or used for firewood related to the project's operations. The Proponent should provide firewood for his onsite camping workers from authorized firewood producer or seller.
- Even if a certain shrub or tree is found along exploration sites, this does not mean that it should be removed. Therefore, care should be taken when exploring without destroying the site vegetation.
- Design access roads appropriately in a manner that disturbs minimal land areas as possible.
- Vegetation clearing to be kept to a minimum. The vegetation of the site is largely low and open and therefore whole-sale vegetation clearing should only be applied where necessary and within the EPL footprint.
- Formulate and implement suitable and appropriate operational management guidelines for the cleared areas. Incorporated in the guidelines are the progressive rehabilitation measures.
- Workers should refrain from disturbing, killing or stealing farm animals and killing small soil and rock outcrops' species found on sites.
- Poaching (illegal hunting) of wildlife from the area is strictly prohibited.
- Environmental awareness on the importance of biodiversity preservation should be provided to the workers.

7.3.3 Generation of Dust (Air Quality)

Dust emanating from site access roads when transporting exploration equipment and supply (water) to and from site (time-to-time) may compromise the air quality in the area. Vehicular movements from heavy vehicles such as trucks would potentially create dust even though it is not always so severe. The hot and dry environment, loose and sandy nature of the substrate and low vegetation cover causes ambient fugitive dust levels. Additionally, activities carried out as part of the exploration works such as drilling would contribute to the dust levels in the air. The medium

significance of this impact can be reduced to a low significance rating by properly implementing mitigation measures. The impact is assessed in **Table 12** below.

Table 12: Assessment of the impacts of exploration on air quality

Mitigation Status	Extent	Duration	Intensity	Probability	Significance
Pre mitigation	M: -3	M: -3	M/L: -4	M/H: 4	M: -40
Post mitigation	L - 1	L - 1	L- 2	L - 1	L - 4

Mitigations and recommendation to minimize dust

- Exploration vehicles should not drive at a speed more than 40 km/h to avoid dust generation around the area.
- The Proponent should ensure that the exploration schedule is limited to the given number of days of the week, and not every day. This will keep the vehicle-related dust level minimal in the area.
- When and if the project reaches the advanced stages of exploration, a reasonable amount of water should be used on gravel roads, using regular water sprays on gravel routes and near exploration sites to suppress the dust that may be emanating from certain exploration areas on the EPL.

7.3.4 Water Resources Use

Water resources is impacted by project developments/activities in two ways, namely through pollution (water quality) or over-abstraction (water quantity) or at times both.

The abstraction of more water than it can be replenished would negatively affect the local communities (communal farmers and livestock) that depend on the same low potential groundwater resource (aquifer).

The impact of the project activities on the resources would be dependent on the water volumes required by each project activity. Commonly exploration activities use a lot of water, mainly drilling. However, this depends on the type of drilling methods employed (diamond drilling is more water-consuming compared to drilling methods such as reverse circulation for instance) and the type of mineral being explored for.



The drilling method to be employed for this project's exploration activities is Reverse Circulation. The required water for exploration is about 2,000 litres per month. This water will be used for drilling purposes such cooling and washing drilling equipment, drinking and other domestic purposes. Given the low to medium groundwater potential of the project site area, the Proponent may consider carting some of the water volumes from outside the area and store it in industry standard water reservoirs/tanks on site. Although exploration may be requiring this much water, this would also be dependent on the duration of the exploration works and number of exploration boreholes required to make reliable interpretation on the commodities explored for. The exploration period is limited time wise, therefore, the impact will only last for the duration of the exploration activities and ceases upon their completion.

Without the implementation of any mitigation measures, the impact can be rated as medium, but upon effective implementation of the recommended measures, the impact significance would be reduced to low as presented in the **Table 13** below.

Table 13: Assessment of the project impact on water resource use and availability

Mitigation Status	Extent	Duration	Intensity	Probability	Significance
Pre mitigation	M - 3	M/H - 4	L/M - 4	M/H - 4	M - 44
Post mitigation	L/M - 2	L/M - 2	L - 2	L/M - 2	L - 12

Mitigations and recommendation to manage water use

- Drinking water abstracted from boreholes or supplied by carting should be used efficiently, and recycling and re-using of water on certain site activities should be encouraged, where necessary and possible.
- Water reuse/recycling methods should be implemented as far as practicable such that the water used to cool off exploration equipment should be captured and used for the cleaning of project equipment, if possible.
- Water storage tanks should be inspected daily to ensure that there is no leakage, resulting in wasted water on site.
- Water conservation awareness and saving measures training should be provided to all the project workers in both phases so that they understand the importance of conserving water and become accountable.



7.3.5 Soil and Water Resources Pollution

The proposed exploration activities are associated with a variety of potential pollution sources (i.e., lubricants, fuel, and wastewater) that may contaminate/pollute soils and eventually groundwater and surface water. The anticipated potential source of pollution to water resources from the project activities would be hydrocarbons (oil) from project vehicles, machinery, and equipment as well as potential wastewater/effluent from exploration related activities.

The spills (depending on volumes spilled on the soils) from these machinery, vehicles and equipment could infiltrate into the ground and pollute the fractured or faulted aquifers on site, and with time reach further groundwater systems in the area. However, it should be noted that the scale and extent/footprint of the activities where potential sources of pollution will be handled is relatively small. Therefore, the impact will be moderately low.

Pre-mitigation measure implementation, the impact significance is low to moderate and upon implementation, the significance will be reduced to low. The impact is assessed in **Table 14** below.

Table 14: Assessment of the project impact on soils and water resources (pollution)

Mitigation Status	Extent	Duration	Intensity	Probability	Significance
Pre mitigation	M - 3	M/H - 4	M - 6	M - 3	M - 39
Post mitigation	L - 1	L - 1	L - 2	L/M - 2	L - 8

Mitigations and recommendation to manage soil and water pollution

- Spill control preventive measures should be in place on site to management soil contamination, thus preventing and or minimizing the contamination from reaching water resources bodies. Some of the soil control preventive measures that can be implemented include:
 - Identification of oil storage and use locations on site and allocate drip trays and polluted soil removal tools suitable for that specific surface (soil or hard rock cover) on the sites.
 - Maintain equipment and fuel storage tanks to ensure that they are in good condition thus preventing leaks and spills.



Excel Dynamic Solutions (Pty) Ltd

- The oil storage and use locations should be visually inspected for container or tank condition and spills.
- All project employees should be sensitized about the impacts of soil pollution and advised to follow appropriate fuel delivery and handling procedures.
- The Proponent should develop and prepare countermeasures to contain, clean up, and mitigate the effects of an oil spill. This includes keeping spill response procedures and a well-stocked cache of supplies easily accessible.
- Ensure employees receive basic Spill Prevention, Control, and Countermeasure (SPCC) Plan training and mentor new workers as they get hired.
- Project machines and equipment should be equipped with drip trays to contain possible oil spills when operated on site.
- Polluted soil should be removed immediately and put in a designate waste type container for later disposal.
- Drip trays must be readily available on this trailer and monitored to ensure that accidental fuel spills along the tank trailer path/route around the exploration sites are cleaned on time (soon after the spill has happened).
- Polluted soil must be collected and transported away from the site to an approved and appropriately classified hazardous waste treatment facility.
- Washing of equipment contaminated hydrocarbons, as well as the washing and servicing of vehicles should take place at a dedicated area, where contaminants are prevented from contaminating soil or water resources.
- Toilet water should be treated using chemical portable toilets and periodically emptied out before reaching capacity and transported to a wastewater treatment facility.

7.3.6 Waste Generation

During the prospecting and exploration phase, domestic and general waste is produced on site. If the generated waste is not disposed of in a responsible way, land pollution may occur on the EPL or around the site. The EPL is in an area of moderate sensitivity to pollution. Improper handling, storage and disposal of hydrocarbon products and hazardous materials at the site may lead to soil and groundwater contamination, in case of spills and leakages. Therefore, the exploration programme needs to have appropriate waste management for the site. To prevent



these issues, biodegradable and non-biodegradable wastes must be stored in separate containers and collected regularly for disposal at a recognized landfill/dump site. Any hazardous waste that may have an impact on the animals, vegetation, water resources and the general environment should be handled cautiously. Without any mitigation measures, the general impact of waste generation has a medium significance. The impact will reduce to low significance, upon implementing the mitigation measures. The assessment of this impact is given in **Table 15**.

Table 15: Assessment of waste generation impact

Mitigation Status	Extent	Duration	Intensity	Probability	Significance
Pre mitigation	L/M - 2	L/M - 2	M - 6	M - 3	M - 30
Post mitigation	L - 1	L - 1	L - 2	L/M - 2	L - 8

Mitigations and recommendation to waste management

- Workers should be sensitized to dispose of waste in a responsible manner and not to litter.
- After each daily works, the Proponent should ensure that there are no wastes left on the sites.
- All domestic and general operational waste produced daily should be contained onsite until such that time it will be transported to designated waste sites.
- No waste may be buried or burned on site or anywhere else.
- The exploration site should be equipped with separate waste bins for hazardous and general/domestic waste.
- Sewage waste should be stored as per the portable chemical toilets supplied on site and regularly disposed of at the nearest treatment facility
- Oil spills should be taken care of by removing and treating soils affected by the spill.
- A penalty system for irresponsible disposal of waste on site and anywhere in the area should be implemented.
- Careful storage and handling of hydrocarbons on site is essential.
- Potential contaminants such as hydrocarbons and wastewater should be contained on site and disposed of in accordance with municipal wastewater discharge standards so that they do not contaminate surrounding soils and eventually groundwater.



- An emergency plan should be available for major/minor spills at the site during operation activities (with consideration of air, groundwater, soil, and surface water) and during the transportation of the product(s) to the sites.

7.3.7 Occupational Health and Safety Risks

Project personnel (workers) involved in the exploration activities may be exposed to health and safety risks. These are in terms of accidental injury, owing to either minor (i.e., superficial physical injury) or major (i.e., involving heavy machinery or vehicles) accidents. The site safety of all personnel will be the Proponent’s responsibility and should be adhered to as per the requirements of the Labour Act (No. 11 of 2007) and the Public Health Act (No. 36 of 1919). The heavy vehicle, equipment and fuel storage area should be properly secured to prevent any harm or injury to the Proponent’s personnel or local domestic animals.

The use of heavy equipment, especially during drilling and the presence of hydrocarbons on sites may result in accidental fire outbreaks. This could pose a safety risk to the project personnel and equipment and vehicles too.

If machinery and equipment are not properly stored and packed, the safety risk may not only be a concern for project workers but residents too, especially children, given the fact that the project sites are within farms, where children reside too. This is true because, the local children may try to access the active site areas and play with dangerous materials and equipment.

The impact is probable and has a medium significance rating. However, with adequate mitigation measures, the impact rating will be reduced to low. This impact is assessed in **Table 16** below and mitigation measures provided.

Table 16: Assessment of the impacts of exploration on health and safety

Mitigation Status	Extent	Duration	Intensity	Probability	Significance
Pre mitigation	M - 3	M - 3	M - 6	M/H - 4	M – 48
Post mitigation	L/M - 2	L/M - 2	L - 2	L/M - 2	L - 12

Mitigations and recommendation to minimize health and safety issues



Excel Dynamic Solutions (Pty) Ltd

- The Labour Act's Health and Safety Regulations should be complied with.
- The Proponent should commit to and make provision for bi-annual full medical check-up for all the workers at site to monitor the impact of project related activities on them (workers).
- As part of their induction, the project workers should be provided with an awareness training of the risks of mishandling equipment and materials on site as well as health and safety risk associated with their respective jobs.
- When working on site, employees should be properly equipped with adequate personal protective equipment (PPE) such as coveralls, gloves, safety boots, earplugs, dust masks, safety glasses, etc.
- Heavy vehicle, equipment and fuel storage site should be properly secured, and appropriate warning signage placed where visible.
- Drilled boreholes that will no longer be in use or to be used later after being drilled should be properly marked for visibility and capped/closed off.
- Ensure that after completion of exploration holes and trenches, drill cuttings are put back into the hole and the holes filled and levelled, and trenches backfilled respectively.
- An emergency preparedness plan should be compiled, and all personnel appropriately trained.
- Workers should not be allowed to drink alcohol prior to and during working hours nor allowed on site when under the influence of alcohol as this may lead to mishandling of equipment which results into injuries and other health and safety risks.
- The site areas that are considered temporary risks should be equipped with "danger" or "cautionary" signs.

7.3.8 Vehicular Traffic Use and Safety

The district roads are the main transportation routes for all vehicular movement in the area and provide access to the EPL and connect the project area to other towns such as Rehoboth. Therefore, traffic volume will increase on these district roads during exploration as the project would need a delivery of supplies and services on site. These service and supplies will include but not limited to water, waste removal, procurement of exploration machinery, equipment, and others.



Depending on the project needs, trucks, medium and small vehicles will be frequenting the area to and from exploration sites on the EPL. This would potentially increase slow moving heavy vehicular traffic along these roads. The impact would not only be felt by the district road users but also the local road users such as farms (via local access gravel and single-track roads). This would add additional pressure on the roads.

However, only so many times a week or even monthly that the exploration related heavy trucks will be transporting materials and equipment from and to site during exploration. Therefore, the risk is anticipated to be short-term, not frequent, and therefore of medium significance. Pre-mitigation, the impact can be rated medium and with the implementation of mitigation measures, the significance will be low as assessed in **Table 17** below.

Table 17: Assessment of the impacts of exploration on road use (vehicular traffic)

Mitigation Status	Extent	Duration	Intensity	Probability	Significance
Pre mitigation	M - 3	M/H - 4	L/M - 4	M/H - 4	M - 44
Post mitigation	L/M - 2	L/M - 2	L - 2	L/M - 2	L - 12

Mitigations and recommendation to minimize impact on road safety and related vehicular traffic issues.

- The transportation of exploration materials, equipment and machinery should be limited to once or twice a week only, but not every day to reduce the pressure on local roads.
- The heavy truck loads should comply with the maximum allowed speed limit for respective vehicles while transporting materials and equipment/machinery on the public and access roads (40km/h).
- The potential carted water to the site (from other source of water supply) should be done once or twice a week in container that can supply and store water for most of the week, thus reducing the number of water-carting trucks on the road daily.
- Drivers of all project phases' vehicles should be in possession of valid and appropriate driving licenses and adhere to the road safety rules.
- Drivers should drive slowly (40km/hour or less) and be on the lookout for livestock and wildlife as well as residents/travelers.



- The Proponent should ensure that the site access roads are well equipped with temporary road signs conditions to cater for vehicles travelling to and from site throughout the project's life cycle.
- Project vehicles should be in a road worthy condition and serviced regularly to avoid accidents owing to mechanical faults.
- Vehicle drivers should only make use of designated site access roads provided and as agreed.
- Vehicle's drivers should not be allowed to operate vehicles while under the influence of alcohol.
- No heavy trucks or project related vehicles should be parked outside the project site boundary or demarcated areas for such purpose.
- To control traffic movement on site, deliveries from and to site should be carefully scheduled. This should optimally be during weekdays and between the hours of 8am and 5pm.
- The site access road(s) should be upgraded to an unacceptable standard to be able to accommodate project related vehicles as well as farm vehicles.

7.3.9 Noise and vibrations

Prospecting and exploration work (especially drilling) may be a nuisance to surrounding communities due to the noise produced by the activity. Excessive noise and vibrations can be a health risk to workers on site. The exploration equipment used for drilling on site is of medium size and the noise level is bound to be limited to the site only, therefore, the impact likelihood is minimal. Without any mitigation, the impact is rated as of medium significance. To change the impact significance from the pre-mitigation significance to low rating, the mitigation measures should be implemented. This impact is assessed in **Table 18** below.

Table 18: Assessment of the impacts of noise and vibrations from exploration

Mitigation Status	Extent	Duration	Intensity	Probability	Significance
Pre mitigation	L/M - 2	L/M - 2	M - 6	M/H - 3	M – 30
Post mitigation	L - 1	L/M - 2	L - 2	L/M -2	L - 10

Mitigations and recommendation to minimize noise



- Noise from operations' vehicles and equipment on the sites should be at acceptable levels.
- The exploration operational times should be set such that no exploration activity is carried out during the night or very early in the mornings.
- Exploration hours should be restricted to between 08h00 and 17h00 to avoid noise and vibrations generated by exploration equipment and the movement of vehicles before or after hours.
- When operating the drilling machinery onsite, workers should be equipped with personal protective equipment (PPE) such as earplugs to reduce exposure to excessive noise.

7.3.10 Disturbance to Archaeological and Heritage resources

According to Mushi (2021), the specialist archaeological assessment, and field-based survey which was conducted, indicates that some sections and within the boundaries of the proposed project site area are highly sensitive and archaeologically significant in terms of heritage resources that characterizes the need of a detailed investigation of any other existing archaeological cultural materials in the areas. This area was mapped out, and coordinates taken to establish “No-Go-Area”, due to their sensitivity the areas were documented, and they should be protected either by fencing them off or demarcation for preservation purposes or excluded from any development i.e., no exploration activities should be conducted near these recorded areas through establishment of buffer zones.

Therefore, this impact can be rated as medium significance if there are no mitigation measures in place. Upon implementation of the necessary measures, the impact significance will be reduced to a lower rating. The impact is assessed in **Table 19**.

Table 19: Assessment of the impacts of exploration on archaeological & heritage resources

Mitigation Status	Extent	Duration	Intensity	Probability	Significance
Pre mitigation	M - 3	M - 3	M - 6	M/H - 4	M – 48
Post mitigation	L/M - 2	L/M - 2	L - 2	L/M - 2	L - 12

Mitigations and recommendation to minimize impact on archaeological and heritage resources



- If any archaeological material or human burials are uncovered during the course of prospecting or exploration activities, then work in the immediate area should be halted, the find would need to be reported to the heritage authorities and may require inspection by an archaeologist.
- Buffer zones should be maintained around known significant archaeological, historical or cultural heritage sites as far as possible.
- A “No-Go-Area” should be put in place where there is evidence of sub-surface archaeological materials, archaeological site, historical, rock paintings, cave/rock shelter or past human dwellings. It can be a demarcation by fencing off or avoiding the site completely by not working closely or near the known site. The ‘No-Go Option’ might have a NEUTRAL impact significance.
- On-site personnel (s) and contractor crews must be sensitized to exercise and recognize “chance finds heritage” in the course of their work.
- During the prospecting and exploration works, it is important to take note and recognize any significant material being unearthed, and making the correct judgment on which actions should be taken (*refer to CFP Appendix 1 below*).
- If there is a possibility of encountering or unearthing of archaeological materials, then it is better to change the layout design so as to avoid the destruction that can occur.
- Direct damage to archaeological or heritage sites should be avoided as far as possible and, where some damage to significant sites is unavoidable, scientific/historical data should be rescued.
- All ground works should be monitored and where any stratigraphic profiles in context with archaeological material are exposed, these should be recorded, photographed and coordinates taken.
- The footprint impact of the proposed prospecting and exploration activities should be kept to minimal to limit the possibility of encountering chance finds within the EPL boundaries.
- A landscape approach of the site management must consider culture and heritage features in the overall planning of exploration infrastructures within and beyond the licenses’ / EPL boundaries;
- Subject to the recommendations herein made and the implementation of the mitigation measures, adoption of the project HMP/EMP should be complied.



Excel Dynamic Solutions (Pty) Ltd

- An archaeologist, Heritage specialist or a trained Site manager should be on-site to monitor all significant earth moving activities that may be implemented as part of the proposed project activities.
- When there is removal of topsoil and subsoil on the site for exploration purposes, the site should be monitored for subsurface archaeological materials by a qualified Archaeologist or Site manager.
- Show overall commitment and compliance by adapting “minimalistic or zero damage approach” throughout the exploration activities.
- In addition to these recommendations above, there should be a controlled movement of the people i.e. a contractor, exploration crews, equipment, setting up of camps and everyone else involved in the prospecting and exploration activities. This is recommended to limit the proliferation of informal pathways, gully erosion and disturbance to surface and sub-surface artifacts such as stone tools and other buried materials, etc.
- There should be a controlled movements of heavy loads such as abnormal vehicles and kinds of heavy duty machineries within the EPL. This means avoiding chances of crossing paths that may lead to the destruction of on and sub-surface archaeological materials
- It is essential that cognizance be taken of the larger historical landscape of the area to avoid the destruction of previously undetected heritage sites. Should any previously undetected heritage or archaeological resources be exposed or uncovered during exploration phases of the proposed project, these should immediately be reported to the heritage specialist or heritage authority (National Heritage Council of Namibia).
- The Proponent and Contractors should adhere to the provisions of Section 55 of the National Heritage Act in event significant heritage and culture features are discovered in the course of exploration works.
- Whoever is going to be in charge of mitigation and monitoring measures should have the authority to stop any exploration or construction activities that is in contravention with the National Heritage Act of 2004 and National Heritage Guidelines as well as the overall project EMP.

7.3.11 Impact on Local Roads/Routes

These types of projects are usually associated with movements of heavy trucks and equipment or machinery that use locals frequently. The heavy trucks travelling on the local roads and exert more pressure on them. These local roads in remote areas are normally not in a good condition already for light vehicles, and the additional vehicles such as heavy ones may make it worse and difficult to be used by small (vehicles) that already struggled on the roads before they got worse. This will be a concern if maintenance and care is not done during the exploration phase. The impact would be short-term (during exploration only) and therefore, manageable.

Without any management and or mitigation measures, the impact can be rated as medium and to reduce this rating to low, the measures will need to be effectively implemented. The assessment of this impact is presented in **Table 20**.

Table 20: Assessment of exploration on local services (roads and water)

Mitigation Status	Extent	Duration	Intensity	Probability	Significance
Pre mitigation	M/H - 4	M - 3	M - 6	M - 3	M - 39
Post mitigation	L - 1	L - 1	M/L - 4	M/L - 2	L - 12

Mitigations and recommendation to minimize the impact on local services

- The heavy trucks transporting materials and services to site should be scheduled to travel at least twice or thrice a week to avoid daily travelling to site, unless on cases of emergencies.
- The Proponent should consider frequent maintenance of local roads on the farms to ensure that the roads are in a good condition for other roads users such as farmers, and travelers from and outside the area.



7.3.12 Social Nuisance: Local Property intrusion and Disturbance or Damage

The presence of some out-of-area workers may lead to social annoyance to the local community. This could particularly be a concern when they or some of those workers enter or damage properties of the locals. The private properties of the locals (farmers) could be houses, fences, vegetation, or domestic and wild animals (livestock and wildlife) or any properties of economic or cultural value to the farm/landowners or occupiers of the land. The damage or disturbance to properties may not only be private but local public properties. The unpermitted and unauthorized entry to private properties may cause clashes between the affected property (land) owners and the Proponent.

Pre-implementation of mitigation measures, the impact is rated as of medium significance. However, upon mitigation (post-mitigation), the significance will change from medium to low rating. The impact is assessed below (**Table 21**).

Table 21: Assessment of social impact of community property damage or disturbance

Mitigation Status	Extent	Duration	Intensity	Probability	Significance
Pre mitigation	M - 3	M - 3	M - 6	M/H - 4	M – 48
Post mitigation	L - 1	L - 1	M/L - 4	M/L -2	L - 12

Mitigations and recommendation to minimize the issue of damage to or intrusion of properties

- The Proponent should inform their workers on the importance of respecting the farmers' properties by not intruding or damage their houses, fences or snaring and killing their livestock and wildlife.
- Any workers or site employees that will be found guilty of intruding peoples 'privately owned properties should be called in for disciplinary hearing and/or dealt with as per their employer' (Proponent)'s code of employment conduct
- The project workers should be advised to respect the community and local's private properties, values, and norms.
- No worker should be allowed to wander in people's private yards or fences without permission.



- The project workers are not allowed to kill or in any way disturb local livestock and wildlife on farms.
- The cutting down or damaging of vegetation belonging to the affected farmers or neighbouring farms is strictly prohibited.

7.3.13 Social Nuisance: Job seeking and Differing Norms, Culture and Values

The proposed project activities could attract a potential influx of people from outside the project area in search of job opportunities. Such influxes during the exploration phase may lead to social annoyance to the local community as well as conflicts. This is generally considered a concern, given the current unemployment rate of youth in Namibia. People from other areas/regions may learn of the project intentions through EIA notices in the newspapers and be forced to go look for work opportunities in the area. Different people may come with different ways of living to the area, which could interfere with the local norms, culture, and values. This could potentially lead to social clashes between the locals and outsiders (out-of-area job seekers).

Pre-implementation of mitigation measures, the impact is rated as of medium significance. However, upon mitigation (post-mitigation) – see mitigation measures below, the significance will change from medium to low rating. The impact is assessed in **Table 22** below.

Table 22: Social impact assessment of outsiders' influx into the area (job seeking related)

Mitigation Status	Extent	Duration	Intensity	Probability	Significance
Pre mitigation	M - 3	M - 3	M - 6	M/H - 4	M – 48
Post mitigation	L/M - 2	L/M - 2	L - 2	L/M - 2	L - 12

Mitigations and recommendation measure to reduce the influx of outsiders into the area

- The Proponent should prioritize the employment of more local people, and only if necessary and due to lack of skills in the area, out-of-area people can be given some of the work. This is to avoid the influx of outsiders into the area for works that can be done the locals.



Excel Dynamic Solutions (Pty) Ltd

- The locals employed during exploration should be provided with the necessary training of skills required for the project to avoid bringing in many out-of-area employees. This way, skills development and transfer is ensured in the local community.
- The workers should be engaged in health talks and training about the dangers of engaging in unprotected sexual relations which results in contracting HIV/AIDS and other sexual related infections.
- Out-of-area workers that may be employed (due to their unique work skills) on site should be sensitized on the importance of respecting the local values and norms, so that they can co-live-in harmony with the local communities during the duration of their employment period on site.

7.4 Cumulative Impacts Associated with Proposed Exploration

According to the International Finance Corporation (2013), cumulative impacts are defined as “those that result from the successive, incremental, and/or combined effects of an action, project, or activity (collectively referred to in this document as “developments”) when added to other existing, planned, and/or reasonably anticipated future ones”.

Similarly, to many other exploration projects, one cumulative impact to which the proposed project and associated activities potentially contribute is the:

- **impact on road infrastructure:** The proposed exploration activity contributes cumulatively to various activities such as farming activities and travelling associated with tourism and local daily routines. The contribution of the proposed project to this cumulative impact is however not considered significant given the short duration, and local extent (site-specific) of the intended mineral exploration activities.
- **The use of water:** While the contribution of this project will not be significant, mitigation measures to reduce water consumption during exploration are essential.

7.5 Mitigations and Recommendations for Rehabilitation

The rehabilitation of explored (disturbed) sites will include but not limited to the following:

- Backfilling of trenches and or pits in such a way that subsoil is replaced first, and topsoil replaces last.
- Levelling of stockpiled topsoil. This will be done to ensure that the disturbed land sites are left as close to their original state as much as possible.



Excel Dynamic Solutions (Pty) Ltd

- Closing off and capping of all exploration drilling boreholes to ensure that they do not pose a risk to both people and animals in the area. The boreholes should not only be filled with sand alone, as wind will scour the sand and re-establish the holes.
- Removal of exploration equipment and vehicles from the site. Transporting all machinery and equipment as well as vehicles to designated offsite storage facilities.
- Clean up of site working areas and transporting the recently generated waste to the nearby approved waste management facility (as per agreement with the facility operator/owner).

8 CONCLUSIONS AND RECOMMENDATIONS

8.1 Conclusion

In conclusion, it is crucial for the Proponent and their contractors to effectively implement the recommended management and mitigation measures, in order to protect both the biophysical and social environment throughout the project duration. All these would be done with the aim of promoting environmental sustainability while ensuring a smooth and harmonious existence and purpose of the project activities in the host community and environment at large. This is to ensure that all potential impacts identified in this study and other impacts that might arise during implementation are properly identified in time and addressed. Lastly, should the ECC be issued, the Proponent will be expected to be compliant with the ECC conditions as well as legal requirements governing the mineral exploration and related activities.

8.2 Recommendations

The potential positive and negative impacts stemming from the proposed exploration activities on EPL No. 5851 were identified, assessed and appropriate management and mitigation measures (to negative impacts) made thereof for implementation by the Proponent, their contractors and project related employees.

The public was consulted as required by the EMA and its 2012 EIA Regulations (Section 21 to 24). This was done via the two newspapers (*New Era* and *The Namibian*) used for this



Excel Dynamic Solutions (Pty) Ltd

environmental assessment. A consultation face-to-face meeting with directly affected parties was conducted, whereby they raised comments and concerns on the proposed project activities.

The issues and concern raised by the registered I&APs formed the basis for this Report and the Draft EMP. The issues were addressed and incorporated into this Report, and mitigation measures provided thereof, to avoid and/or minimize their significance on the environmental and social components. Most of the potential impacts were found to be of medium rating significance. With the effective implementation the recommended management and mitigation measures, this will particularly see the reduction in the significance of adverse impacts that cannot be avoided completely (from medium rating to low). To maintain the desirable rating, the implementation of management and mitigation measures should be monitored by the Proponent directly, or a project Environmental Control Officer (ECO) is highly recommended. The monitoring of this implementation will not only be done to maintain the reduce impacts' rating or maintain low rating but to also ensure that all potential impacts identified in this study and other impacts that might arise during implementation are properly identified in time and addressed right away too.

An Archaeological & Heritage Impact Assessment (AHIA) was done by a specialist for this ESA Study. The findings of this AHIA and the Scoping assessment (ESA) were deemed sufficient and concluded that no further detailed assessments are required to the ECC application.

The Environmental Consultant is confident that the potential negative impacts associated with the proposed project activities can be managed and mitigated by the effective implementation of the recommended management and mitigation measures and with more effort and commitment put on monitoring the implementation of these measures.

It is therefore, recommended that the proposed prospecting and exploration activities be granted an Environmental Clearance Certificate, provided that:

- All the management and mitigation measures provided herein are effectively and progressively implemented.
- All required permits, licenses and approvals for the proposed activities should be obtained as required. These include permits and licenses for land use access agreements to explore and ensuring compliance with these specific legal requirements.
- The Proponent and all their project workers or contractors comply with the legal requirements governing their project and its associated activities and ensure that project



Excel Dynamic Solutions (Pty) Ltd

permits and or approvals required to undertake specific site activities are obtained and renewed as stipulated by the issuing authorities.

- Site areas where exploration activities have ceased are rehabilitated, as far as practicable, to their pre-exploration state.

9 REFERENCES

- Booth, P. (2011). Environmental Conceptual Site Model Exercise: Source – pathway – receptor. WSP Global: Semantic Scholar.
- Kinahan, J. (2001) The presence of the past: archaeology, environment and land rights on the lower Cunene River. *Cimbebasia* 17: 23-39.
- Kinahan, J. (1997) Epupa Hydropower Feasibility Study. Phase 2, Archaeological Survey. Commissioned by Burmeister & Partners on behalf of NAMANG. QRS Project Report No. 8
- Manheimer. (2018). Retrieved from Tree Atlas of Namibia:
<http://treetlas.biodiversity.org.na/viewspec.php?nr=20>
- Mendelsohn. (2006). A digest of information on key aspect of Otjozondjupa and Omaheke geography. Namibia: Research and Information Services of Namibia.
- Mendelsohn. (2003). *The Atlas of Namibia: A Portrait of the land and its people*. pg 14 -18
- Mendelsohn, J. (2003). Atlas of Namibia: A Portrait of the Land and its People. Windhoek: The Ministry of Environment and Tourism of Namibia.
- Miller, R. McG. 1983a. The Pan-African Damara Orogen of South West Africa/Namibia, 431-515. In: Miller, R.McG. (Ed.) Evolution of the Damara Orogen of South West Africa/Namibia. Spec. Publ. geol. Soc. S. Afr., 11, 515 pp.
- NSA. (2011). Retrieved from <https://digitalnamibia.nsa.org.na/>
- NSA. (2011). Digital Namibia: Namibia statistics of Namibia. Retrieved February 17, 2021, from <https://digitalnamibia.nsa.org.na/>
- SASSCAL WeatherNet, 2020. http://www.sasscalweathernet.org/weatherstat_monthly_we.php
- Vigne. P (2000). Options for Livelihoods Diversification in Omaheke Region. A Report on a semi-structured interview Survey conducted by Oxfam Canada in Collaboration with the Ministry of Agriculture, Water and Rural Development. Windhoek: Oxfam Canada