



Figure 1: The location of Kulala Desert Lodge



Figure 2: Map of the Kulala Wilderness reserve and location of the lodge



Figure 3: Google earth image of the lodge and support structures

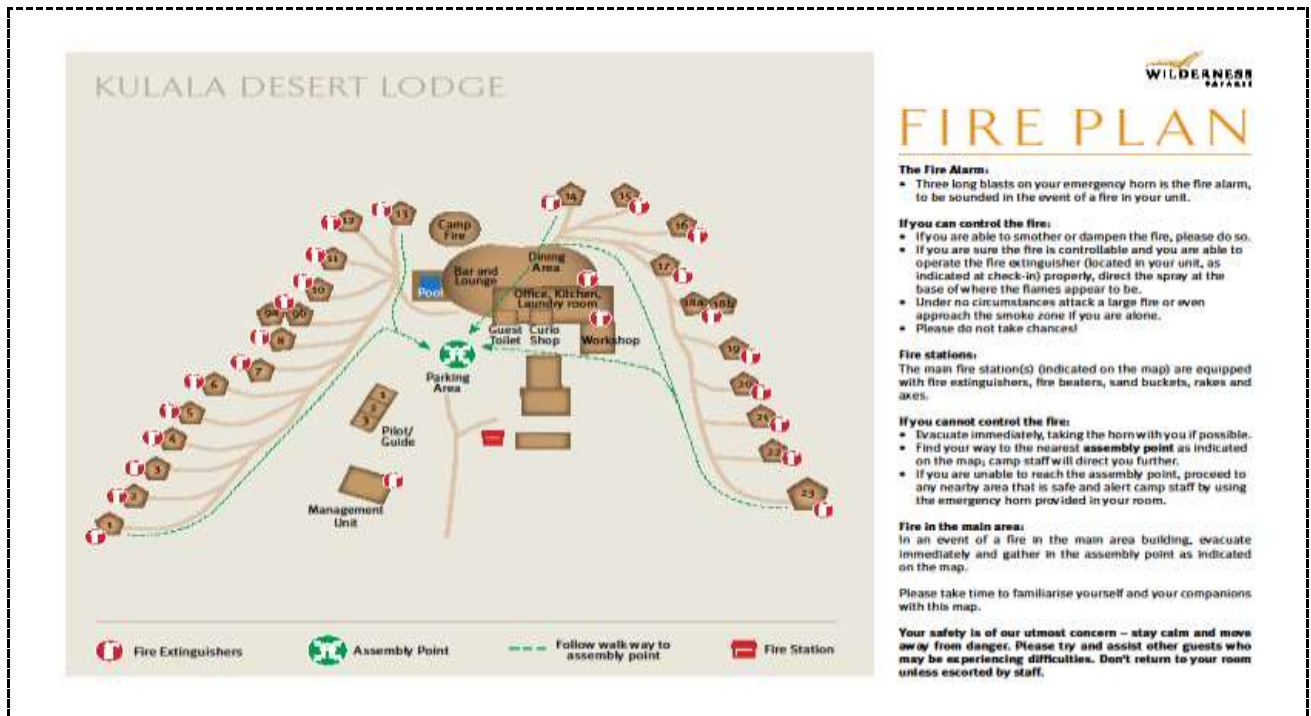


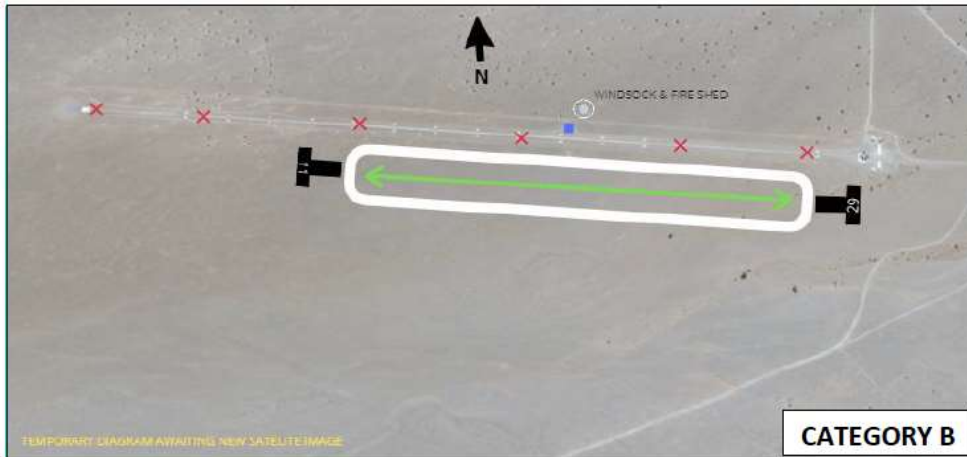
Figure 4: Layout of the lodge and fire plan

1.3 Airstrip

Kulala Wilderness Reserve airstrip (Geluk Airstrip) is located south east, about 7 km from the lodge. The specifications of the airstrip are, Length: 1200m; Elevation: 731 m; Co-ordinates: S24:40:24 E15:47:36. The infrastructure at the airstrip include 2 flush toilets, water tank and a fuel storage area, a fire shed, a waiting area and a fence around the airstrip to prevent wildlife on the runway. The airstrip serves both Kulala Desert Lodge and Little Kulala Lodge.

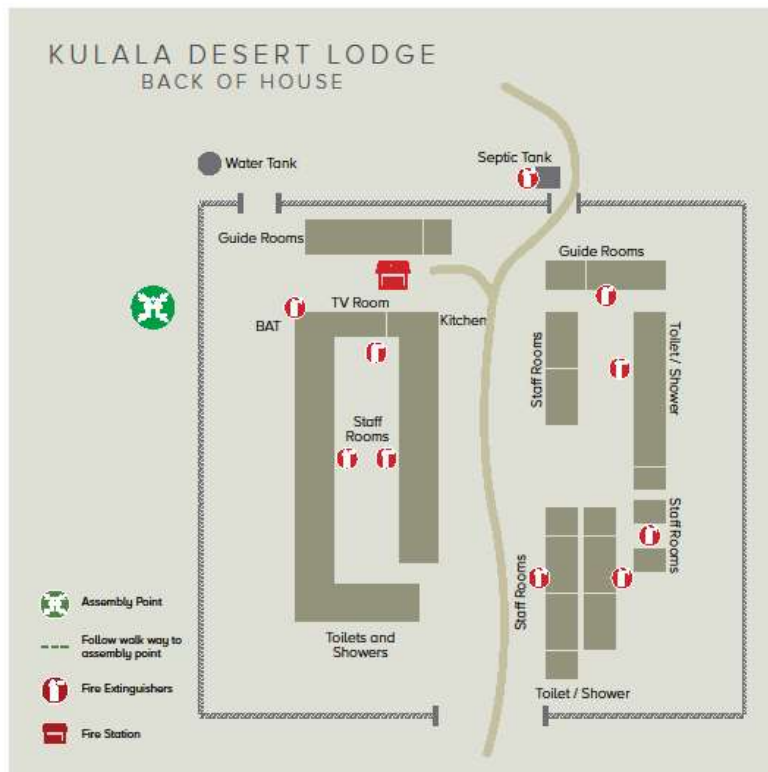
NO turn arounds on the run way and no low flying is permitted. Aircrafts are only allowed to turn around at each ends of the runway. The apron/parking is in the middle of the runway on the north-western side of the airstrip. The aircrafts are only permitted to park in this apron on the blocks for overnights as well as for drop-offs/pick-ups.

FYGK
GELUK / GLU
 S 24:40:24 | E 015:47:36



ELEVATION: 2400 FT
LENGTH: 1200 M LDA | 1320 M TODA
RWY DIR: 11 / 29
SLOPE: 11 UPSLOPE
SURFACE: GRAVEL
FREQ: 124.8 TIBA | 123.8 WDH INFO SOUTH

Figure 5: The aerial view of the geluk airstrip



FIREPLAN

THE FIRE ALARM:

- Three long blasts on the emergency horn (if you have one) is the fire alarm, to be sounded in the event of a fire. If you don't have access to an emergency horn, alert your next door neighbour immediately and inform them to spread the news.

IF YOU CAN CONTROL THE FIRE:

- If you are able to smother or dampen the fire (i.e. with a blanket or water), please do so.
- If you are sure the fire is controllable and you are able to operate the nearest fire extinguisher (indicated on the map) properly, direct the spray at the base of where the flames appear to be.
- Under no circumstances attack a large fire or even approach the smoke zone if you are alone.
- Please do not take chances!

FIRE STATIONS:
 The main fire station(s) (indicated on the map) are equipped with fire extinguishers, fire beaters, sand buckets, rakes and axes.

IF YOU CANNOT CONTROL THE FIRE:

- Evacuate immediately, taking the horn and a torch with you if possible.
- Find your way to the assembly area/meeting point as indicated on the map.
- If you are unable to reach the assembly area, proceed to any nearby area that is safe and alert fellow staff by using the emergency horn or yelling.

FIRE IN THE MAIN AREA:
 In an event of a fire in the main area building, evacuate immediately and gather in the assembly area/master point as indicated on the map.

Please take time to familiarise yourself and your companions with this map.

Your safety is of our utmost concern – stay calm and move away from danger. Please try and assist other staff and guests who may be experiencing difficulties.



Figure 6: Layout of the staff village and its fire plan