

**THE ONLY JAMME & DJ DASIVA**  
-Penduka no Shipi FM

**Bby Gal Marina & DJ Sebbi**  
-The eye opener with Shipi FM

**DJ Eddy**  
-The Youth zone with Shipi FM

**DJ Gee**  
-The sunset with Shipi FM

**OUR DAILY NEWS**  
@ 14H00 &  
@ 20H30

**Divu Gal Tania**  
-Relax with Shipi FM

**DJ Quality & DJ Wafresha**  
-Lungama no Shipi FM

**DJ Maggy**  
-Eluwa lyatenda

**FREQUENCY**  
✓ North103.6  
✓ Walvis Bay 104.0  
✓ Swakopmund 96.5  
✓ Otjiwarongo 99.6  
✓ Oshivelo, Grootfontein  
Tsumeb & Otavi 96.3  
065 241 421  
065 241 451  
SMS LINE 343  
Shipi FM  
Radio Garden  
313 846  
www.shipifm.com.na

**MONDAY TO FRIDAY SHOWS**  
06H00 - 10H00 PENDUKA NO SHIPI FM  
10H00 - 14H00 THE EYE OPENER WITH SHIPIFM  
14H00 - 18H00 THE YOUTH ZONE WITH SHIPI FM  
18H00 - 21H00 THE SUNSET WITH SHIP FM  
21H00 - 00H00 RELAX WITH SHIPI FM  
00H00 - 03H00 LUNGAMA NO SHIPI FM  
03H00 - 06H00 ELUWA LYA TENDA NO SHIPI FM

**Maria Namugala**  
-Your NEWS anchor

**Patrick Kenanye**  
-Your NEWS Anchor

**The Black Gem**  
-The Producer

**THE WINNING TEAM**

# SOLD

IS YOUR PROPERTY  
WHEN YOU LIST WITH US!

We treat your property different,  
the difference is in the way we list,  
passionately and professionally  
we get it **SOLD !!**

**TWAHAFA REAL ESTATES**  
CLIENT FOCUSED • URBANE DIVINE

**BUY | SELL | RENT**  
CONTACT US TODAY +264 81 653 4437  
www.twahafagroup.com | info@twahafagroup.com

Follow Us: [Social Media Icons]

**NOTICE FOR PUBLIC PARTICIPATION ENVIRONMENTAL IMPACT ASSESSMENT**

Environam Consultants Trading cc (ECT) hereby gives notice to all potentially Interested and Affected Parties (I&APs) that an application will be made to the Environmental Commissioner in terms of the Environmental Management Act (No 7 of 2007) and the Environmental Impact Assessment Regulations (GN 30 of 6 February 2012) for the following:

**PROJECT NAME:** Construction and Operation of a Fuel Retail Service Station on Portion 158 of Portion 143 of Gobabis Town and Townlands No. 114, Nossobville, Gobabis

**PROJECT LOCATION:** Nossobville, Gobabis, Omaheke Region

**PROJECT DESCRIPTION:** The infrastructure will consist amongst other things of: underground tanks for ULP, Diesel 500 ppm and Diesel 50 ppm; underground tank for paraffin; dispenser pumps; compressor and generator room; store with fast food amenities; vents etc.

**PROPONENT:** Kanduu Designing and Construction

**ENVIRONMENTAL ASSESSMENT PRACTITIONER (EAP):** Environam Consultants Trading cc (ECT)

**REGISTRATION OF I&APs AND SUBMISSION OF COMMENTS:** In line with Namibia's Environmental Management Act (No. 7 of 2007) and EIA regulations (GN 30 of 6 February 2012), all I&APs are hereby invited to register and submit their comments, concerns or questions in writing. Kindly contact:

Colin P Namene  
Email: colin@environam.com  
Fax: 061 258 470 or  
Tel: 061 258 394  
Mobile: 0814 584 297 on or before **07 January 2022**.

Owing to Interest, Registered Interested and Affected Parties Will be Informed in the Month of January 2022 of Any Public Meeting to be Held.

## CALL FOR PUBLIC PARTICIPATION

### ENVIRONMENTAL IMPACT ASSESSMENT FOR THE PROPOSED ESTABLISHMENT OF LITHIUM MINE

Minera-Xplore Consultancy CC hereby gives notice to all potentially Interested and Affected Parties (I&APs) that an application will be made to the Environmental Commissioner in terms of the Environmental Management Act (No.7 of 2007) and the Environmental Impact Assessment Regulations (GN 30 of 6 February 2012) for the proposed activity:

**Project description:** Environmental Impact Assessment (EIA) for the establishment of Lithium mine on EPL 7228.

**Location:** The project is situated approximately 45 km west-northwest (WNW) of the Town of Omaruru. Project area covers: farm Kohero 113, Goedehoop 157, Gross Okombahe 193, Ehuuro 120, Okarundu Nord West 118, Okarundu North 121 in Erongo Region.

**Proponent:** Xinfeng Investments (Pty) Ltd  
**Environmental Assessment Practitioner (EAP):** Minera-Xplore Consultancy CC

In accordance with Namibia's Environmental Management Act (No. 7 of 2007) and EIA regulations (GN 30 of 6 February 2012), all interested and affected parties (I&APs) are invited to register and submit comments, concerns or questions in writing via email: [info@minera-xplore.com](mailto:info@minera-xplore.com) or [frontdesk@minera-xplore.com](mailto:frontdesk@minera-xplore.com) on or before Friday **31st December 2021**. A public meeting will be based on the interest expressed by the public and stakeholders. Should a public meeting be held all registered I&APs will be informed accordingly.

**Minera-Xplore Consultancy**  
Tel: +264 85 761 4750

## CALL FOR PUBLIC PARTICIPATION

### ENVIRONMENTAL IMPACT ASSESSMENT FOR THE PROPOSED ESTABLISHMENT OF LITHIUM MINE

Minera-Xplore Consultancy CC hereby gives notice to all potentially Interested and Affected Parties (I&APs) that an application will be made to the Environmental Commissioner in terms of the Environmental Management Act (No.7 of 2007) and the Environmental Impact Assessment Regulations (GN 30 of 6 February 2012) for the proposed activity:

**Project description:** Environmental Impact Assessment (EIA) for the establishment of Lithium mine on EPL 7228.

**Location:** The project is situated approximately 45 km west-northwest (WNW) of the Town of Omaruru. Project area covers: farm Kohero 113, Goedehoop 157, Gross Okombahe 193, Okarundu Nord West 118, Kawab 117, Okombahe 112 and Dâures constituency in Erongo Region.

**Proponent:** Xinfeng Investments (Pty) Ltd  
**Environmental Assessment Practitioner (EAP):** Minera-Xplore Consultancy CC

In accordance with Namibia's Environmental Management Act (No. 7 of 2007) and EIA regulations (GN 30 of 6 February 2012), all interested and affected parties (I&APs) are invited to register and submit comments, concerns or questions in writing via email: [info@minera-xplore.com](mailto:info@minera-xplore.com) or [frontdesk@minera-xplore.com](mailto:frontdesk@minera-xplore.com) on or before Friday **31st December 2021**. A public meeting will be based on the interest expressed by the public and stakeholders. Should a public meeting be held all registered I&APs will be informed accordingly.

**Minera-Xplore Consultancy**  
Tel: +264 85 761 4750



# Classifieds

2 Bachelor flats each with its own toilet and shower in Suiderhof behind Shell garage. Available immediately or 1 January 2022. N\$4 500 each, water and electricity included. Tight security. Swimming pool available on special conditions. Plenty of parking space. Contact 0813216699/+264813818403

## CALL FOR PUBLIC PARTICIPATION

### ENVIRONMENTAL IMPACT ASSESSMENT FOR THE PROPOSED ESTABLISHMENT OF LITHIUM MINE

Minera-Xplore Consultancy CC hereby gives notice to all potentially Interested and Affected Parties (I&APs) that an application will be made to the Environmental Commissioner in terms of the Environmental Management Act (No.7 of 2007) and the Environmental Impact Assessment Regulations (GN 30 of 6 February 2012) for the proposed activity:

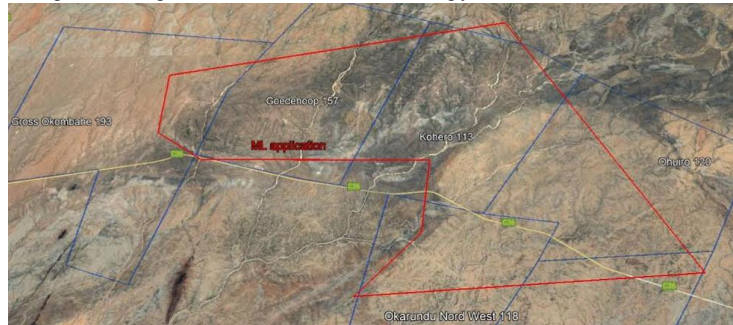
**Project description:** Environmental Impact Assessment (EIA) for the establishment of Lithium mine on EPL 7228.

**Location:** The project is situated approximately 45 km west-northwest (WNW) of the Town of Omaruru. Project area covers: farm Kohero 113, Goedehoop 157, Gross Okombahe 193, Ehuru 120, Okarundu Nord West 118, Okarundu North 121 in Erongo Region.

**Proponent:** Xinfeng Investments (Pty) Ltd

**Environmental Assessment Practitioner (EAP):** Minera-Xplore Consultancy CC

In accordance with Namibia's Environmental Management Act (No. 7 of 2007) and EIA regulations (GN 30 of 6 February 2012), all interested and affected parties (I&APs) are invited to register and submit comments, concerns or questions in writing via email: [info@minera-xplore.com](mailto:info@minera-xplore.com) or [frontdesk@minera-xplore.com](mailto:frontdesk@minera-xplore.com) on or before Friday 31<sup>st</sup> December 2021. A public meeting will be based on the interest expressed by the public and stakeholders. Should a public meeting be held all registered I&APs will be informed accordingly.



**Minera-Xplore Consultancy**

Tel: +264 85 761 4750

## CALL FOR PUBLIC PARTICIPATION

### ENVIRONMENTAL IMPACT ASSESSMENT FOR THE PROPOSED ESTABLISHMENT OF LITHIUM MINE

Minera-Xplore Consultancy CC hereby gives notice to all potentially Interested and Affected Parties (I&APs) that an application will be made to the Environmental Commissioner in terms of the Environmental Management Act (No.7 of 2007) and the Environmental Impact Assessment Regulations (GN 30 of 6 February 2012) for the proposed activity:

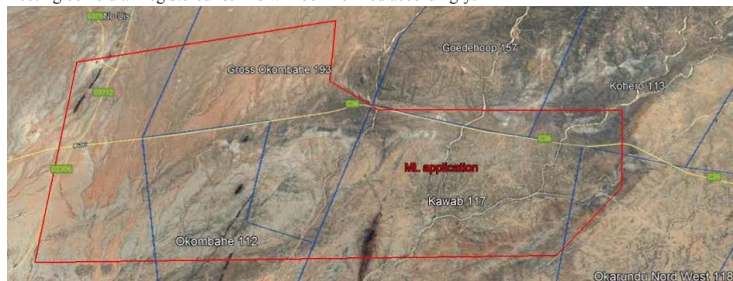
**Project description:** Environmental Impact Assessment (EIA) for the establishment of Lithium mine on EPL 7228.

**Location:** The project is situated approximately 45 km west-northwest (WNW) of the Town of Omaruru. Project area covers: farm Kohero 113, Goedehoop 157, Gross Okombahe 193, Okarundu Nord West 118, Kawab 117, Okombahe 112 and Däures constituency in Erongo Region.

**Proponent:** Xinfeng Investments (Pty) Ltd

**Environmental Assessment Practitioner (EAP):** Minera-Xplore Consultancy CC

In accordance with Namibia's Environmental Management Act (No. 7 of 2007) and EIA regulations (GN 30 of 6 February 2012), all interested and affected parties (I&APs) are invited to register and submit comments, concerns or questions in writing via email: [info@minera-xplore.com](mailto:info@minera-xplore.com) or [frontdesk@minera-xplore.com](mailto:frontdesk@minera-xplore.com) on or before Friday 31<sup>st</sup> December 2021. A public meeting will be based on the interest expressed by the public and stakeholders. Should a public meeting be held all registered I&APs will be informed accordingly.



**Minera-Xplore Consultancy**

Tel: +264 85 761 4750

Contact: Mandy

• T: 061 24 6136 • C: 081 895 8296 • E: [mandy@confidentenamibia.com](mailto:mandy@confidentenamibia.com)

## CALL FOR REGISTRATION AS INTERESTED AND AFFECTED PARTIES

### PROPOSED INSTALLATION AND OPERATION OF A DIESEL STORAGE FACILITY AT THE AUS TRANSNAMIB STATION, KARAS REGION

#### 1. PROJECT SITE AND DESCRIPTION

TradePort Namibia proposes to install an aboveground diesel (50 ppm) fuel storage (AST) within the TransNamib Station premises at Aus Settlement. The facility will consist of three (3) tanks with a cumulative storing capacity of 249 cubic meters. Subsequently, intend to apply and obtain an environmental clearance certificate from the Department of Environmental Affairs and Forestry, thus undertaking an environmental assessment process.

#### 2. PUBLIC PARTICIPATION PROCESS

Enviro-Leap Consulting invites all Interested and Affected Party (I & AP) to register and receive Environmental Assessment (EIA, Scoping and EMP) documents relating to the proposed project for their comments and input.

#### 3. COMMENTS AND QUERIES

Interested and Affected Parties are herewith request to register by writing to us at the address below no later than **31 DECEMBER 2021**.

#### 3. COMMENTS AND QUERIES

Please register and direct all comments, queries to:  
Mr. Vilho Mtuleni, Environmental Assessment Practitioner  
Email: [eap.trigen@gmail.com](mailto:eap.trigen@gmail.com) - Cell: +264 81 232 6843



### NOTICE FOR PUBLIC PARTICIPATION ENVIRONMENTAL IMPACT ASSESSMENT

Environam Consultants Trading cc (ECT) hereby gives notice to all potentially Interested and Affected Parties (I&APs) that an application will be made to the Environmental Commissioner in terms of the Environmental Management Act (No 7 of 2007) and the Environmental Impact Assessment Regulations (GN 30 of 6 February 2012) for the following:

**PROJECT NAME:** Construction and Operation of a Fuel Retail Service Station on Portion 158 of Portion 143 of Gobabis Town and Townlands No. 114, Nossobville, Gobabis

**PROJECT LOCATION:** Nossobville, Gobabis, Omaheke Region

**PROJECT DESCRIPTION:** The infrastructure will consist amongst other things of: underground tanks for ULP, Diesel 500 ppm and Diesel 50 ppm; underground tank for paraffin; dispenser pumps; compressor and generator room; store with fast food amenities; vents etc.

**PROPOSER:** Kanduu Designing and Construction

**ENVIRONMENTAL ASSESSMENT PRACTITIONER (EAP):** Environam Consultants Trading cc (ECT)

**REGISTRATION OF I&APs AND SUBMISSION OF COMMENTS:** In line with Namibia's Environmental Management Act (No. 7 of 2007) and EIA regulations (GN 30 of 6 February 2012), all I&APs are hereby invited to register and submit their comments, concerns or questions in writing, Kindly contact:

Colin P Namene  
Email: [colin@environam.com](mailto:colin@environam.com)  
Fax: 061 258 470 or  
Tel: 061 258 394  
Mobile: 0814 584 297 on or before **07 January 2022**.

Owing to Interest, Registered Interested and Affected Parties Will be Informed in the Month of January 2022 of Any Public Meeting to be Held.

## PROPERTY

### TWAHAF REAL ESTATE

#### FOR SALE

Sole mandate specialist OKAHANDJA : Serviced Industrial Plot 21 893 sqm, N\$ 8 100 000

ONDANGWA: Business Plot, B1 road, serviced 5442 sqm, N\$ 3 300 000

ARANDIS: Brand new House, 4 bedrooms with a 2 bedroom backyard flat N\$ 945 000

ELISENHEIM: Beautiful family house, 3 bedrooms, 2 bathrooms, double garage, 450sqm N\$2.2 million

KATUTURA: Neat House 3 bedrooms, 3 bathrooms, garage, electrical fence,

Entertainment area built in braai N\$ 1350 000

SOWETO: Townhouse 2bedrooms, renovated, own yard N\$ 740 000 cost incl.

WINDHOEK NORTH: Townhouse 2 bedrooms, full bathroom, courtyard N\$ 850 000 cost incl

FREEDOMLAND: Flat 2 bedroom, big courtyard N\$650 000 cost incl

WANAHEDA : Townhouse, 2bedrooms, Neat, Safe big courtyard N\$780 000cost incl

OTJOMUISE: Flat 2 big bedrooms, courtyard N\$ 689 000 cost incl

EROS: 3 bedroom House, pool, Erf size 1166 (Business Location) N\$2 900 000

LUXURY HILL KAT: Flat 2 bedroom, big courtyard N\$ 720 000 cost incl

FREEDOMLAND: Flat 2bedrooms Courtyard N\$710 000 cost incl

WANAHEDA : Flat 2bedrooms, balcony N\$ 740 000 cost incl

WHK CBD: flat 1 bedroom, located a central family practice, great investment N\$ 820 000

Klein Whk: Urban space - 1 bedroom, full bathroom, 2 aircons N\$ 820 000

**0816534437**  
[info@twahafagroup.com](mailto:info@twahafagroup.com)

**Advertise**  
Your  
**Business**  
Here

#### CONTACT US

Tel: (061) 246 136

Fax: (061) 271 782

Email: [kenneth@confidentenamibia.com.na](mailto:kenneth@confidentenamibia.com.na)

PO Box 5033,

Ausspannplatz,

Windhoek


[www.confidente.com.na](http://www.confidente.com.na)



**CLASSIFIEDS**

**EnviroPlan Consulting cc**  
Innovative planning for sustainability

**NOTICE OF ENVIRONMENTAL AND SOCIAL IMPACT ASSESSMENT AND PUBLIC PARTICIPATION PROCESS:**  
**THE UPGRADE TO LOW VOLUME BITUMINOUS SEAL STANDARD OF THE DR 3633 TSANDI-ONGULUMBASHE ROAD (22KM) IN OMUSATI REGION NAMIBIA.**



EnviroPlan Consulting cc hereby gives notice to all potentially Interested and Affected Parties (I&APs), that an application for Environmental Clearance certificate will be made to the Environmental Commissioner in terms of the Environmental Management Act (No. 7 of 2007) as follows;

**Proponent:** Roads Authority Namibia  
**Environmental Assessment Practitioner:** EnviroPlan Consulting cc

**Project Description:** Roads Authority Namibia intends to obtain an Environmental Clearance Certificate (ECC) for the design and upgrade of DR3633 road from gravel to bitumen standard, including abstraction of road construction materials from identified borrow pits in proximity to the road.

**Project Location:** DR 3633 is currently a gravel road stretching from Tsandi Village to Ongulumbashe Settlement/ Memorial.

**Public participation process:** Interested and affected parties are hereby notified that public participation meetings will be held as follows:

Date and Time	Activity	Venue/Place
09.12.21, 09:30 AM	Consultative Meeting	Tsandi Traditional Authority Hall
09.12.21, 14:00 PM	Consultative Meeting	Ongulumbashe Settlement- Otunana Meeting Tree

The participation and commenting period is effective until 21 January 2022.

To register or request for documents submit your details in writing to the Environmental Consultant or alternatively fill the online form, link and contact details given; <https://forms.gle/wed37nc4umk2w1H4>

**EnviroPlan Consulting:** Tendai E. Kasinani  
Phone: +264813634904  
Email: [tendai@enviroplanconsult.com](mailto:tendai@enviroplanconsult.com)

**NOTICE FOR ENVIRONMENTAL IMPACT ASSESSMENT**

Healthy Earth Environmental Consultants CC (HEEC) hereby gives notice to all potentially Interested and Affected Parties (I&APs) that an application will be made to the Environmental Commissioner in terms of the Environmental Management Act (No 7 of 2007) and Environmental Impact Assessment Regulations (GN 30 of 6 February 2012) for the following:


**PROJECT NAME:**  
Environmental Impact Assessment (EIA) for the establishment of exploration activities for Base and Rare metals, Dimension stone, Industrial Minerals, Non-nuclear Fuel Minerals, Precious metals and Precious stones within the EPL 7209 covering a total area of 19 970 Hectares in the Kunene Region, Namibia.

**PROJECTS LOCATION:**  
The EPL 7209 is situated at Otjikondavirongo Village, Sesfontein Constituency in Kunene Region.

**PROJECT DESCRIPTION:**  
The project involves conducting an Environmental Impact Assessments (EIAs) for the establishment of exploration activities for Base and Rare metals, Dimension stone, Industrial Minerals, Non-nuclear Fuel Minerals, Precious metals and Precious stones within the EPL 7209 at Otjikondavirongo Village, Sesfontein Constituency in Kunene Region.

**PROJECT INVOLVEMENT:**  
**Proponent:** Sunset Investment CC  
**Environmental Assessment Practitioner (EAP):** Healthy Earth Environmental Consultants CC (HEEC)

**REGISTRATION OF I&APs AND SUBMISSION OF COMMENTS:** In line with Namibia's Environmental Management Act (No. 7 of 2007) and EIA regulations (GN 30 of 6 February 2012), all I&APs are hereby invited to register and submit their comments, concerns or questions in writing via: Email: [askheec@gmail.com](mailto:askheec@gmail.com) on or before Monday 13<sup>th</sup> December 2021. Should a public meeting be held all registered I&APs will be informed accordingly. Communication with stakeholders & I&APs is preferred via email.



**NOTICE OF ENVIRONMENTAL ASSESSMENT AND PUBLIC PARTICIPATION PROCESS**

Junior Balano Industrial Consultants cc hereby gives notice to all potentially Interested and Affected Parties (I&APs) that an application will be made to Environmental Commissioner in terms of the Environmental Management Act (No 7 of 2007) and the Environmental Impact Assessment Regulations (GN 30 of 6 February 2012) for the following activity:

**Project Title:** Environmental assessment on the area covered on EPL 7986 and Mineral Exploration Activities, in Arandis

**Project Description:** Proposed prospecting of Base and Rare Metals, Industrial Minerals, Nuclear Fuel Minerals, Dimension stones, Precious Metals and Precious Stones Groups of minerals

**Project Location:** The EPL is located 6km East of Arandis town and 2km to the North of Rossing Uranium Mine, Erongo Region Namibia.

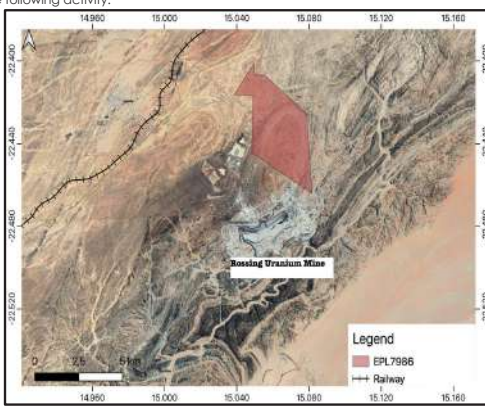

**Proponent:** Onaminda Investments cc

I&APs are invited to register with the consultant and give their comments and concerns in writing. Please note the public meeting details as follows:

**Date:** 17 December 2021  
**Venue:** Arandis Community Hall  
**Time:** 13H00 AM

To register or request for documents please submit your name, contact information and interest in the project, in writing to:

Mr. Fredrich Nghiyolwa  
Tel: +264 (0) 81 147 2029  
Email: [JuniorB200581@gmail.com](mailto:JuniorB200581@gmail.com)

**NOTICE OF ENVIRONMENTAL ASSESSMENT AND PUBLIC PARTICIPATION PROCESS**

Junior Balano Industrial Consultants cc hereby gives notice to all potentially Interested and Affected Parties (I&APs) that an application will be made to Environmental Commissioner in terms of the Environmental Management Act (No 7 of 2007) and the Environmental Impact Assessment Regulations (GN 30 of 6 February 2012) for the following activity:

**Project Title:** Proposed Chemical and Minerals Storage Warehouse

**Project Description:** The Upgrade and operation of a Chemical and Minerals Storage Warehouse at Transnamb Storage Warehouse in Aus, Karas Region-Namibia

**Project Location:** The proposed project site is located in Aus at the Transnamb warehouse and storage facility sited about 2.5km South-East of Aus proper along the C13 road in Karas Region-Namibia.



**Proponent:** Coleman Transport (PTY) Ltd

I&APs are invited to register with the consultant and give their comments and concerns in writing. Please take note of the following:

**PUBLIC MEETING**  
**Date:** 14 December 2021  
**Venue:** Aus Community Hall  
**Time:** 12h00

To register or request for documents please submit your name, contact information and interest in the project, in writing to:

Mr. Fredrich Nghiyolwa  
Tel: +264 (0) 81 147 2029  
Email: [JuniorB200581@gmail.com](mailto:JuniorB200581@gmail.com)

**CALL FOR PUBLIC PARTICIPATION**

**ENVIRONMENTAL IMPACT ASSESSMENT FOR THE PROPOSED ESTABLISHMENT OF LITHIUM MINE**

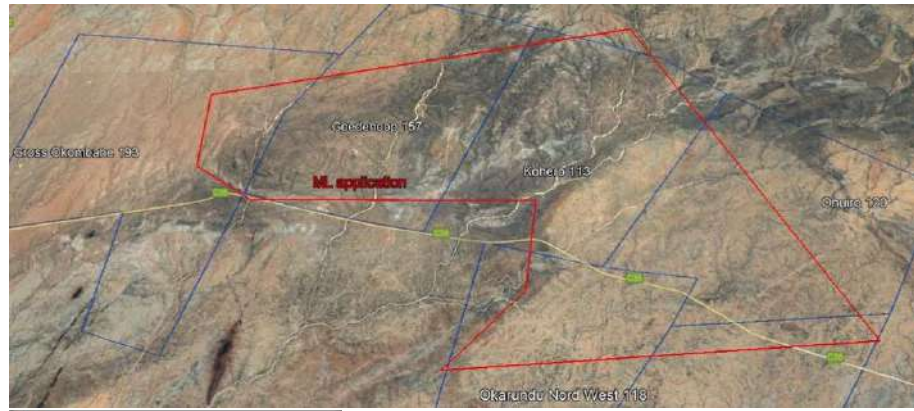
Minera-Xplore Consultancy CC hereby gives notice to all potentially Interested and Affected Parties (I&APs) that an application will be made to the Environmental Commissioner in terms of the Environmental Management Act (No.7 of 2007) and the Environmental Impact Assessment Regulations (GN 30 of 6 February 2012) for the proposed activity:

**Project description:** Environmental Impact Assessment (EIA) for the establishment of Lithium mine on EPL 7228.

**Location:** The project is situated approximately 45 km west-northwest (WNW) of the Town of Omaruru. Project area covers: farm Kohero 113, Goedehoop 157, Gross Okombahe 193, Ehuiru 120, Okarundu Nord West 118, Okarundu North 121 in Erongo Region.

**Proponent:** Xinfeng Investments (Pty) Ltd  
**Environmental Assessment Practitioner (EAP):** Minera-Xplore Consultancy CC

In accordance with Namibia's Environmental Management Act (No. 7 of 2007) and EIA regulations (GN 30 of 6 February 2012), all interested and affected parties (I&APs) are invited to register and submit comments, concerns or questions in writing via email: [info@minera-xplore.com](mailto:info@minera-xplore.com) or [frontdesk@minera-xplore.com](mailto:frontdesk@minera-xplore.com) on or before Friday 31<sup>st</sup> December 2021. A public meeting will be based on the interest expressed by the public and stakeholders. Should a public meeting be held all registered I&APs will be informed accordingly.



**Minera-Xplore Consultancy**  
Tel: +264 85 761 4750

**CALL FOR PUBLIC PARTICIPATION**

**ENVIRONMENTAL IMPACT ASSESSMENT FOR THE PROPOSED ESTABLISHMENT OF LITHIUM MINE**


Minera-Xplore Consultancy CC hereby gives notice to all potentially Interested and Affected Parties (I&APs) that an application will be made to the Environmental Commissioner in terms of the Environmental Management Act (No.7 of 2007) and the Environmental Impact Assessment Regulations (GN 30 of 6 February 2012) for the proposed activity:

**Project description:** Environmental Impact Assessment (EIA) for the establishment of Lithium mine on EPL 7228.

**Location:** The project is situated approximately 45 km west-northwest (WNW) of the Town of Omaruru. Project area covers: farm Kohero 113, Goedehoop 157, Gross Okombahe 193, Okarundu Nord West 118, Kawab 117, Okombahe 112 and Däures constituency in Erongo Region.

**Proponent:** Xinfeng Investments (Pty) Ltd  
**Environmental Assessment Practitioner (EAP):** Minera-Xplore Consultancy CC

In accordance with Namibia's Environmental Management Act (No. 7 of 2007) and EIA regulations (GN 30 of 6 February 2012), all interested and affected parties (I&APs) are invited to register and submit comments, concerns or questions in writing via email: [info@minera-xplore.com](mailto:info@minera-xplore.com) or [frontdesk@minera-xplore.com](mailto:frontdesk@minera-xplore.com) on or before Friday 31<sup>st</sup> December 2021. A public meeting will be based on the interest expressed by the public and stakeholders. Should a public meeting be held all registered I&APs will be informed accordingly.



**Minera-Xplore Consultancy**  
Tel: +264 85 761 4750



**CLASSIFIEDS**



**NOTICE FOR PUBLIC PARTICIPATION ENVIRONMENTAL IMPACT ASSESSMENT**

Environam Consultants Trading cc (ECT) hereby gives notice to all potentially Interested and Affected Parties (I&APs) that an application will be made to the Environmental Commissioner in terms of the Environmental Management Act (No 7 of 2007) and the Environmental Impact Assessment Regulations (GN 30 of 6 February 2012) for the following:

**PROJECT NAME:** Construction and Operation of a Fuel Retail Service Station on Portion 158 of Portion 143 of Gobabis Town and Townlands No. 114, Nossobville, Gobabis

**PROJECT LOCATION:** Nossobville, Gobabis, Omaheke Region

**PROJECT DESCRIPTION:** The infrastructure will consist amongst other things of: underground tanks for ULP, Diesel 500 ppm and Diesel 50 ppm; underground tank for paraffin; dispenser pumps; compressor and generator room; store with fast food amenities; vents etc.

**PROPONENT:** Kanduu Designing and Construction

**ENVIRONMENTAL ASSESSMENT PRACTITIONER (EAP):** Environam Consultants Trading cc (ECT)

**REGISTRATION OF I&APs AND SUBMISSION OF COMMENTS:** In line with Namibia's Environmental Management Act (No. 7 of 2007) and EIA regulations (GN 30 of 6 February 2012), all I&APs are hereby invited to register and submit their comments, concerns or questions in writing. Kindly contact:

Colin P Namene  
 Email: colin@environam.com  
 Fax: 061 258 470 or  
 Tel: 061 258 394  
 Mobile: 0814 584 297 on or before **07 January 2022**.

**Owing to Interest, Registered Interested and Affected Parties Will be Informed in the Month of January 2022 of Any Public Meeting to be Held.**

**NOTICE OF ENVIRONMENTAL ASSESSMENT AND PUBLIC PARTICIPATION PROCESS**

Junior Baiano Industrial Consultants cc hereby gives notice to all potentially Interested and Affected Parties (I&APs) that an application will be made to Environmental Commissioner in terms of the Environmental Management Act (No 7 of 2007) and the Environmental Impact Assessment Regulations (GN 30 of 6 February 2012) for the following activity:

**Project Title:** Environmental assessment on the area covered on EPL 7986 and Mineral Exploration Activities, in Arandis

**Project Description:** Proposed prospecting of Base and Rare Metals, Industrial Minerals, Nuclear Fuel Minerals, Dimension stones, Precious Metals and Precious Stones Groups of minerals

**Project Location:** The EPL is located 6km East of Arandis town and 2km to the North of Rosing Uranium Mine, Erongo Region Namibia.

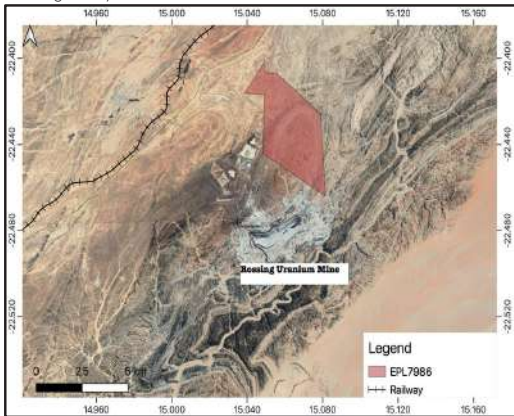
**Proponent:** Onaminda Investments cc

IAPs are invited to register with the consultant and give their comments and concerns in writing. Please note the public meeting details as follows:

**Date:** 17 December 2021  
**Venue:** Arandis Community Hall  
**Time:** 13H00 AM

To register or request for documents please submit your name, contact information and interest in the project, in writing to:

Mr. Fredrich Nghiyolwa  
 Tel: +264 (0) 81 147 2029  
 Email: [Junior8200581@gmail.com](mailto:Junior8200581@gmail.com)



**CALL FOR PUBLIC PARTICIPATION**

**ENVIRONMENTAL IMPACT ASSESSMENT FOR THE PROPOSED ESTABLISHMENT OF LITHIUM MINE**

Minera-Xplore Consultancy CC hereby gives notice to all potentially Interested and Affected Parties (I&APs) that an application will be made to the Environmental Commissioner in terms of the Environmental Management Act (No.7 of 2007) and the Environmental Impact Assessment Regulations (GN 30 of 6 February 2012) for the proposed activity:

**Project description:** Environmental Impact Assessment (EIA) for the establishment of Lithium mine on EPL 7228.

**Location:** The project is situated approximately 45 km west-northwest (WNW) of the Town of Omaruru. Project area covers: farm Kohero 113, Goedehoop 157, Gross Okombahe 193, Ehuiru 120, Okarundu Nord West 118, Okarundu North 121 in Erongo Region.

**Proponent:** Xinfeng Investments (Pty) Ltd

**Environmental Assessment Practitioner (EAP):** Minera-Xplore Consultancy CC

In accordance with Namibia's Environmental Management Act (No. 7 of 2007) and EIA regulations (GN 30 of 6 February 2012), all interested and affected parties (I&APs) are invited to register and submit comments, concerns or questions in writing via email: [info@minera-xplore.com](mailto:info@minera-xplore.com) or [frontdesk@minera-xplore.com](mailto:frontdesk@minera-xplore.com) on or before Friday 31<sup>st</sup> December 2021. A public meeting will be based on the interest expressed by the public and stakeholders. Should a public meeting be held all registered I&APs will be informed accordingly.



**Tel:** +264 85 761 4750

**CALL FOR PUBLIC PARTICIPATION**

**ENVIRONMENTAL IMPACT ASSESSMENT FOR THE PROPOSED ESTABLISHMENT OF LITHIUM MINE**

Minera-Xplore Consultancy CC hereby gives notice to all potentially Interested and Affected Parties (I&APs) that an application will be made to the Environmental Commissioner in terms of the Environmental Management Act (No.7 of 2007) and the Environmental Impact Assessment Regulations (GN 30 of 6 February 2012) for the proposed activity:

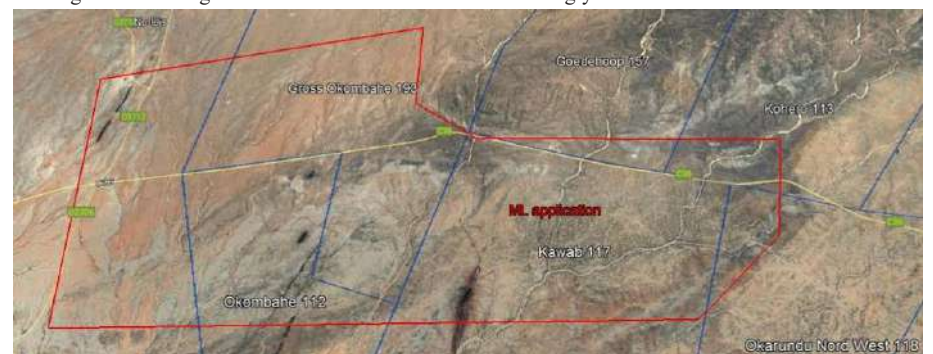
**Project description:** Environmental Impact Assessment (EIA) for the establishment of Lithium mine on EPL 7228.

**Location:** The project is situated approximately 45 km west-northwest (WNW) of the Town of Omaruru. Project area covers: farm Kohero 113, Goedehoop 157, Gross Okombahe 193, Okarundu Nord West 118, Kawab 117, Okombahe 112 and Dãures constituency in Erongo Region.

**Proponent:** Xinfeng Investments (Pty) Ltd

**Environmental Assessment Practitioner (EAP):** Minera-Xplore Consultancy CC

In accordance with Namibia's Environmental Management Act (No. 7 of 2007) and EIA regulations (GN 30 of 6 February 2012), all interested and affected parties (I&APs) are invited to register and submit comments, concerns or questions in writing via email: [info@minera-xplore.com](mailto:info@minera-xplore.com) or [frontdesk@minera-xplore.com](mailto:frontdesk@minera-xplore.com) on or before Friday 31<sup>st</sup> December 2021. A public meeting will be based on the interest expressed by the public and stakeholders. Should a public meeting be held all registered I&APs will be informed accordingly.



**Tel:** +264 85 761 4750

**NOTICE OF ENVIRONMENTAL ASSESSMENT AND PUBLIC PARTICIPATION PROCESS**

Junior Baiano Industrial Consultants cc hereby gives notice to all potentially Interested and Affected Parties (I&APs) that an application will be made to Environmental Commissioner in terms of the Environmental Management Act (No 7 of 2007) and the Environmental Impact Assessment Regulations (GN 30 of 6 February 2012) for the following activity:

**Project Title:** Proposed Chemical and Minerals Storage Warehouse

**Project Description:** The Upgrade and operation Of a Chemical and Minerals Storage Warehouse at Transnamb Storage Warehouse in Aus, Karas Region-Namibia

**Project Location:** The proposed project site is located in Aus at the Transnamb warehouse and storage facility sited about 2.5km South-East of Aus proper along the C13 road in Karas Region-Namibia.

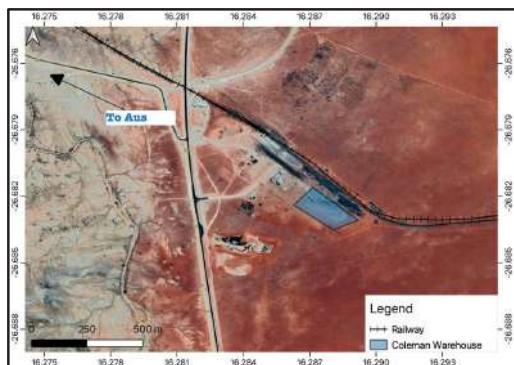
**Proponent:** Coleman Transport (PTY) Ltd

IAPs are invited to register with the consultant and give their comments and concerns in writing. Please take note of the following:

**PUBLIC MEETING**  
**Date:** 14 December 2021  
**Venue:** Aus Community Hall  
**Time:** 12h00

To register or request for documents please submit your name, contact information and interest in the project, in writing to:

Mr. Fredrich Nghiyolwa  
 Tel: +264 (0) 81 147 2029  
 Email: [Junior8200581@gmail.com](mailto:Junior8200581@gmail.com)





**CLASSIFIEDS**



**NOTICE FOR PUBLIC PARTICIPATION ENVIRONMENTAL IMPACT ASSESSMENT**

Environam Consultants Trading cc (ECT) hereby gives notice to all potentially Interested and Affected Parties (I&APs) that an application will be made to the Environmental Commissioner in terms of the Environmental Management Act (No 7 of 2007) and the Environmental Impact Assessment Regulations (GN 30 of 6 February 2012) for the following:

**PROJECT NAME:** Construction and Operation of a Fuel Retail Service Station on Portion 158 of Portion 143 of Gobabis Town and Townlands No. 114, Nossobville, Gobabis

**PROJECT LOCATION:** Nossobville, Gobabis, Omaheke Region

**PROJECT DESCRIPTION:** The infrastructure will consist amongst other things of: underground tanks for ULP, Diesel 500 ppm and Diesel 50 ppm; underground tank for paraffin; dispenser pumps; compressor and generator room; store with fast food amenities; vents etc.

**PROPONENT:** Kanduu Designing and Construction

**ENVIRONMENTAL ASSESSMENT PRACTITIONER (EAP):** Environam Consultants Trading cc (ECT)

**REGISTRATION OF I&APs AND SUBMISSION OF COMMENTS:** In line with Namibia's Environmental Management Act (No. 7 of 2007) and EIA regulations (GN 30 of 6 February 2012), all I&APs are hereby invited to register and submit their comments, concerns or questions in writing. Kindly contact:

Colin P Namene  
 Email: colin@environam.com  
 Fax: 061 258 470 or  
 Tel: 061 258 394  
 Mobile: 0814 584 297 on or before **07 January 2022**.

**Owing to Interest, Registered Interested and Affected Parties Will be Informed in the Month of January 2022 of Any Public Meeting to be Held.**

**NOTICE OF ENVIRONMENTAL ASSESSMENT AND PUBLIC PARTICIPATION PROCESS**

Junior Baiano Industrial Consultants cc hereby gives notice to all potentially Interested and Affected Parties (I&APs) that an application will be made to Environmental Commissioner in terms of the Environmental Management Act (No 7 of 2007) and the Environmental Impact Assessment Regulations (GN 30 of 6 February 2012) for the following activity:

**Project Title:** Environmental assessment on the area covered on EPL 7986 and Mineral Exploration Activities, in Arandis

**Project Description:** Proposed prospecting of Base and Rare Metals, Industrial Minerals, Nuclear Fuel Minerals, Dimension stones, Precious Metals and Precious Stones Groups of minerals

**Project Location:** The EPL is located 6km East of Arandis town and 2km to the North of Rosing Uranium Mine, Erongo Region Namibia.

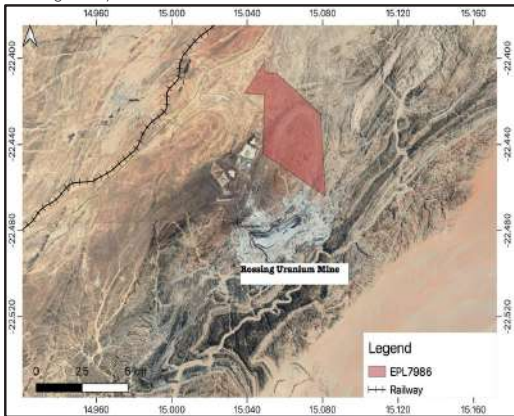
**Proponent:** Onaminda Investments cc

IAPs are invited to register with the consultant and give their comments and concerns in writing. Please note the public meeting details as follows:

**Date:** 17 December 2021  
**Venue:** Arandis Community Hall  
**Time:** 13H00 AM

To register or request for documents please submit your name, contact information and interest in the project, in writing to:

Mr. Fredrich Nghiyolwa  
 Tel: +264 (0) 81 147 2029  
 Email: Junior8200581@gmail.com



**CALL FOR PUBLIC PARTICIPATION**

**ENVIRONMENTAL IMPACT ASSESSMENT FOR THE PROPOSED ESTABLISHMENT OF LITHIUM MINE**

Minera-Xplore Consultancy CC hereby gives notice to all potentially Interested and Affected Parties (I&APs) that an application will be made to the Environmental Commissioner in terms of the Environmental Management Act (No.7 of 2007) and the Environmental Impact Assessment Regulations (GN 30 of 6 February 2012) for the proposed activity:

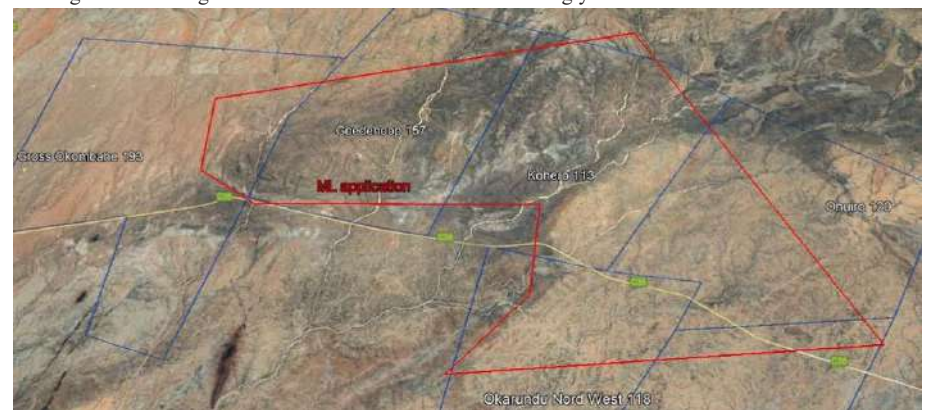
**Project description:** Environmental Impact Assessment (EIA) for the establishment of Lithium mine on EPL 7228.

**Location:** The project is situated approximately 45 km west-northwest (WNW) of the Town of Omaruru. Project area covers: farm Kohero 113, Goedehoop 157, Gross Okombahe 193, Ehuiru 120, Okarundu Nord West 118, Okarundu North 121 in Erongo Region.

**Proponent:** Xinfeng Investments (Pty) Ltd

**Environmental Assessment Practitioner (EAP):** Minera-Xplore Consultancy CC

In accordance with Namibia's Environmental Management Act (No. 7 of 2007) and EIA regulations (GN 30 of 6 February 2012), all interested and affected parties (I&APs) are invited to register and submit comments, concerns or questions in writing via email: [info@minera-xplore.com](mailto:info@minera-xplore.com) or [frontdesk@minera-xplore.com](mailto:frontdesk@minera-xplore.com) on or before Friday 31<sup>st</sup> December 2021. A public meeting will be based on the interest expressed by the public and stakeholders. Should a public meeting be held all registered I&APs will be informed accordingly.



Tel: +264 85 761 4750

**CALL FOR PUBLIC PARTICIPATION**

**ENVIRONMENTAL IMPACT ASSESSMENT FOR THE PROPOSED ESTABLISHMENT OF LITHIUM MINE**

Minera-Xplore Consultancy CC hereby gives notice to all potentially Interested and Affected Parties (I&APs) that an application will be made to the Environmental Commissioner in terms of the Environmental Management Act (No.7 of 2007) and the Environmental Impact Assessment Regulations (GN 30 of 6 February 2012) for the proposed activity:

**Project description:** Environmental Impact Assessment (EIA) for the establishment of Lithium mine on EPL 7228.

**Location:** The project is situated approximately 45 km west-northwest (WNW) of the Town of Omaruru. Project area covers: farm Kohero 113, Goedehoop 157, Gross Okombahe 193, Okarundu Nord West 118, Kawab 117, Okombahe 112 and Dãures constituency in Erongo Region.

**Proponent:** Xinfeng Investments (Pty) Ltd

**Environmental Assessment Practitioner (EAP):** Minera-Xplore Consultancy CC

In accordance with Namibia's Environmental Management Act (No. 7 of 2007) and EIA regulations (GN 30 of 6 February 2012), all interested and affected parties (I&APs) are invited to register and submit comments, concerns or questions in writing via email: [info@minera-xplore.com](mailto:info@minera-xplore.com) or [frontdesk@minera-xplore.com](mailto:frontdesk@minera-xplore.com) on or before Friday 31<sup>st</sup> December 2021. A public meeting will be based on the interest expressed by the public and stakeholders. Should a public meeting be held all registered I&APs will be informed accordingly.



Tel: +264 85 761 4750

**NOTICE OF ENVIRONMENTAL ASSESSMENT AND PUBLIC PARTICIPATION PROCESS**

Junior Baiano Industrial Consultants cc hereby gives notice to all potentially Interested and Affected Parties (I&APs) that an application will be made to Environmental Commissioner in terms of the Environmental Management Act (No 7 of 2007) and the Environmental Impact Assessment Regulations (GN 30 of 6 February 2012) for the following activity:

**Project Title:** Proposed Chemical and Minerals Storage Warehouse

**Project Description:** The Upgrade and operation Of a Chemical and Minerals Storage Warehouse at Transnamb Storage Warehouse in Aus, Karas Region-Namibia

**Project Location:** The proposed project site is located in Aus at the Transnamb warehouse and storage facility sited about 2.5km South-East of Aus proper along the C13 road in Karas Region-Namibia.

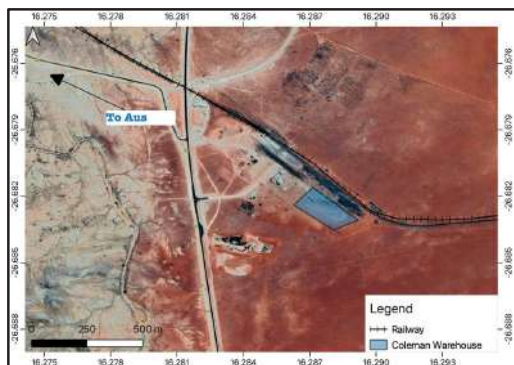
**Proponent:** Coleman Transport (PTY) Ltd

IAPs are invited to register with the consultant and give their comments and concerns in writing. Please take note of the following:

**PUBLIC MEETING**  
**Date:** 14 December 2021  
**Venue:** Aus Community Hall  
**Time:** 12h00

To register or request for documents please submit your name, contact information and interest in the project, in writing to:

Mr. Fredrich Nghiyolwa  
 Tel: +264 (0) 81 147 2029  
 Email: Junior8200581@gmail.com





**CLASSIFIEDS**



**NOTICE FOR PUBLIC PARTICIPATION ENVIRONMENTAL IMPACT ASSESSMENT**

Environam Consultants Trading cc (ECT) hereby gives notice to all potentially Interested and Affected Parties (I&APs) that an application will be made to the Environmental Commissioner in terms of the Environmental Management Act (No 7 of 2007) and the Environmental Impact Assessment Regulations (GN 30 of 6 February 2012) for the following:

**PROJECT NAME:** Construction and Operation of a Fuel Retail Service Station on Portion 158 of Portion 143 of Gobabis Town and Townlands No. 114, Nossobville, Gobabis

**PROJECT LOCATION:** Nossobville, Gobabis, Omaheke Region

**PROJECT DESCRIPTION:** The infrastructure will consist amongst other things of: underground tanks for ULP, Diesel 500 ppm and Diesel 50 ppm; underground tank for paraffin; dispenser pumps; compressor and generator room; store with fast food amenities; vents etc.

**PROPOSER:** Kanduu Designing and Construction

**ENVIRONMENTAL ASSESSMENT PRACTITIONER (EAP):** Environam Consultants Trading cc (ECT)

**REGISTRATION OF I&APs AND SUBMISSION OF COMMENTS:** In line with Namibia's Environmental Management Act (No. 7 of 2007) and EIA regulations (GN 30 of 6 February 2012), all I&APs are hereby invited to register and submit their comments, concerns or questions in writing. Kindly contact:

Colin P Namene  
Email: colin@environam.com  
Fax: 061 258 470 or  
Tel: 061 258 394  
Mobile: 0814 584 297 on or before **07 January 2022**.

**Owing to Interest, Registered Interested and Affected Parties Will be Informed in the Month of January 2022 of Any Public Meeting to be Held.**

**NOTICE OF ENVIRONMENTAL ASSESSMENT AND PUBLIC PARTICIPATION PROCESS**

Junior Baiano Industrial Consultants cc hereby gives notice to all potentially Interested and Affected Parties (I&APs) that an application will be made to Environmental Commissioner in terms of the Environmental Management Act (No 7 of 2007) and the Environmental Impact Assessment Regulations (GN 30 of 6 February 2012) for the following activity:

**Project Title:** Environmental assessment on the area covered on EPL 7986 and Mineral Exploration Activities, in Arandis

**Project Description:** Proposed prospecting of Base and Rare Metals, Industrial Minerals, Nuclear Fuel Minerals, Dimension stones, Precious Metals and Precious Stones Groups of minerals

**Project Location:** The EPL is located 6km East of Arandis town and 2km to the North of Rosing Uranium Mine, Erongo Region Namibia.

**Proponent:** Onaminda Investments cc

I&APs are invited to register with the consultant and give their comments and concerns in writing. Please note the public meeting details as follows:

**Date:** 17 December 2021  
**Venue:** Arandis Community Hall  
**Time:** 13:00 AM

To register or request for documents please submit your name, contact information and interest in the project, in writing to:

Mr. Fredrich Nghiyolwa  
Tel: +264 (0) 81 147 2029  
Email: [JuniorB200581@gmail.com](mailto:JuniorB200581@gmail.com)



**CALL FOR PUBLIC PARTICIPATION**

**ENVIRONMENTAL IMPACT ASSESSMENT FOR THE PROPOSED ESTABLISHMENT OF LITHIUM MINE**

Minera-Xplore Consultancy CC hereby gives notice to all potentially Interested and Affected Parties (I&APs) that an application will be made to the Environmental Commissioner in terms of the Environmental Management Act (No.7 of 2007) and the Environmental Impact Assessment Regulations (GN 30 of 6 February 2012) for the proposed activity:

**Project description:** Environmental Impact Assessment (EIA) for the establishment of Lithium mine on EPL 7228.

**Location:** The project is situated approximately 45 km west-northwest (WNW) of the Town of Omaruru. Project area covers: farm Kohero 113, Goedehoop 157, Gross Okombaba 193, Ehuuro 120, Okarundu Nord West 118, Okarundu North 121 in Erongo Region.

**Proponent:** Xinfeng Investments (Pty) Ltd

**Environmental Assessment Practitioner (EAP):** Minera-Xplore Consultancy CC

In accordance with Namibia's Environmental Management Act (No. 7 of 2007) and EIA regulations (GN 30 of 6 February 2012), all interested and affected parties (I&APs) are invited to register and submit comments, concerns or questions in writing via email: [info@minera-xplore.com](mailto:info@minera-xplore.com) or [frontdesk@minera-xplore.com](mailto:frontdesk@minera-xplore.com) on or before Friday **31<sup>st</sup> December 2021**. A public meeting will be based on the interest expressed by the public and stakeholders. Should a public meeting be held all registered I&APs will be informed accordingly.



Tel: +264 85 761 4750

**CALL FOR PUBLIC PARTICIPATION**

**ENVIRONMENTAL IMPACT ASSESSMENT FOR THE PROPOSED ESTABLISHMENT OF LITHIUM MINE**

Minera-Xplore Consultancy CC hereby gives notice to all potentially Interested and Affected Parties (I&APs) that an application will be made to the Environmental Commissioner in terms of the Environmental Management Act (No.7 of 2007) and the Environmental Impact Assessment Regulations (GN 30 of 6 February 2012) for the proposed activity:

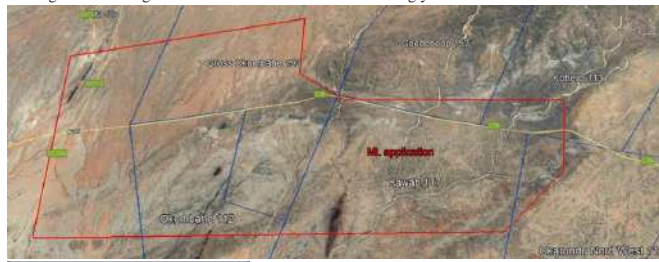
**Project description:** Environmental Impact Assessment (EIA) for the establishment of Lithium mine on EPL 7228.

**Location:** The project is situated approximately 45 km west-northwest (WNW) of the Town of Omaruru. Project area covers: farm Kohero 113, Goedehoop 157, Gross Okombaba 193, Okarundu Nord West 118, Kawab 117, Okombaba 112 and Däures constituency in Erongo Region.

**Proponent:** Xinfeng Investments (Pty) Ltd

**Environmental Assessment Practitioner (EAP):** Minera-Xplore Consultancy CC

In accordance with Namibia's Environmental Management Act (No. 7 of 2007) and EIA regulations (GN 30 of 6 February 2012), all interested and affected parties (I&APs) are invited to register and submit comments, concerns or questions in writing via email: [info@minera-xplore.com](mailto:info@minera-xplore.com) or [frontdesk@minera-xplore.com](mailto:frontdesk@minera-xplore.com) on or before Friday **31<sup>st</sup> December 2021**. A public meeting will be based on the interest expressed by the public and stakeholders. Should a public meeting be held all registered I&APs will be informed accordingly.



Tel: +264 85 761 4750

**CALL FOR REGISTRATION AS INTERESTED AND AFFECTED PARTIES**

**PROPOSED INSTALLATION AND OPERATION OF A DIESEL STORAGE FACILITY AT THE AUS TRANSNAMIB STATION, KARAS REGION**

**1. PROJECT SITE AND DESCRIPTION**

TradePort Namibia proposes to install an aboveground diesel (50 ppm) fuel storage (AST) within the TransNamib Station premises at Aus Settlement. The facility will consist of three (3) tanks with a cumulative storing capacity of 249 cubic meters. Subsequently, intend to apply and obtain an environmental clearance certificate from the Department of Environmental Affairs and Forestry, thus undertaking an environmental assessment process.

**2. PUBLIC PARTICIPATION PROCESS**

Enviro-Leap Consulting invites all Interested and Affected Party (I & AP) to register and receive Environmental Assessment (BID, Scoping and EMP) documents relating to the proposed project for their comments and input.

**3. COMMENTS AND QUERIES**

Interested and Affected Parties are herewith request to register by writing to us at the address below no later than **31 DECEMBER 2021**.

**3. COMMENTS AND QUERIES**

Please register and direct all comments, queries to:  
Mr. Vilho Mtuleni, Environmental Assessment Practitioner  
Email: [eap.trigen@gmail.com](mailto:eap.trigen@gmail.com) - Cell: +264 81 232 6843



**NOTICE FOR PUBLICATION**

**(THREE STOREY DWELLING APPLICATION)**

Take notice that the owner, Mr. Negonga of ERF 736 Terrace Street, Kleine Kuppe intends on applying to the Windhoek Municipal Council for the construction of a three-storey dwelling unit.

The proposed construction will allow the owner to erect the three-storey dwelling unit on ERF 736 Terrace Street, Kleine Kuppe.

The owner's current intentions are to erect and use the building for residential purpose.

Further take notice that the plan of the erf lies for inspection on the town planning notice board in the Customer Care Centre, Main Municipal Offices, Rev. Michael Scott Street, Windhoek.

Any person objecting to the proposed use of the land as set out above may lodge such objection together with the grounds thereof, with the city of Windhoek, fifth floor, office 524 and with the architect in writing within 14 days of the last publication of this notice.

The last date for any objection is **22 December 2021**.

Dated at Windhoek this  
8<sup>th</sup> day of December 2021.

**Owner Name:** Amupolo Negonga  
**Postal Address:** 24756, Windhoek  
**Contact Number:** 0816815722

**GOSSIP**

Manchester United are interested in a move for Chelsea's Germany defender Antonio Rudiger, 28, and are hopeful that Ralf Rangnick can help them beat Real Madrid, Paris St-Germain and Bayern Munich to his signing. (Bild, via Mail)

Rudiger, who is out of contract in the summer, is planning to quit Chelsea after he was offered less than the £140,000 a week that England midfielder Mason Mount, 22, has been offered to sign a new deal. (Football Insider)

With Rudiger and Denmark defender Andreas Christensen, 25, nearing the end of their contracts at Stamford Bridge, Chelsea could turn their attention to 26-year-old Germany and Bayern Munich defender Niklas Sule and Sevilla's 23-year-old French defender Jules Kounde as replacements. (Football London)

Neither Manchester United or Paris St-Germain have opened talks over Barcelona's Netherlands midfielder Frenkie de Jong and the situation around the 24-year-old remains "quiet". (Fabrizio Romano)

Borussia Dortmund and Norway striker Erling Braut Haaland, 21, has warned Barcelona that he won't consider a move to the Nou Camp unless the club are playing in the Champions League next year. (Sport, via Star)

Manchester United have a ready-made replacement if 26-year-old French forward Anthony Martial leaves as Swedish winger Anthony Elanga, 19, is set for a new deal after impressing new boss Ralf Rangnick. (Telegraph - subscription required)

Roma boss Jose Mourinho is set to approach his former club Chelsea with an offer for 25-year-old England midfielder Ruben Loftus-Cheek. (Il Romanista, via Sun)

Arsenal are interested in Juventus' Brazilian midfielder Arthur Melo, 25, as well as the Italian side's 21-year-old Swedish winger Dejan Kulusevski. (Calciomercato - in Italian)

Everton are interested in signing Dynamo Kyiv's Ukraine international left-back Vitaliy Mykolenko, 25, for £20m. (Liverpool Echo)

Manchester United have identified Leeds United's Illan Meslier as the best young goalkeeper in England - but when they sent goalkeeping scout Tony Coton to watch the 21-year-old Frenchman, he conceded seven at Manchester City on Tuesday. (Mail)

Everton are among a number of Premier League clubs chasing Metz's French right-back Fabien Centonze, 25. (Football Insider)

Former Arsenal midfielder Emmanuel Frimpong has urged the club to sell Pierre-Emerick Aubameyang after the Gabon striker, 32, was stripped of the captaincy. (Sun)

Monaco sporting director Paul Mitchell has warned Manchester United and Chelsea that 21-year-old France midfielder Aurelien Tchouameni will not come cheap. (Tuttosport, via Metro)



Compose

Mail

- Inbox
- Starred
- Snoozed
- Sent
- Drafts 1

Chat



No conversations  
Start a chat

Spaces



No spaces yet  
Create or find a space

Meet



7 of 17

## Background Information Document for Mining Licence(ML) 242 and 243, within EPL 7228, Omaruru, Erongo Region

External Inbox x



**Minera- Xplore Consultancy** <info@minera-xplore.com>

Mon, Dec 20, 2021, 3:39 PM

to vpetzel, alex.busch, nau, Saima.Angula, lumbue, bnangombe, renthiakaimbi, KamburonaJ, likandor, Vanessa.Stein

Dear Interested and Affected Party,

This communication serves to inform your office that Xinfeng Investments (Pty) Ltd. (hereafter referred to as the Proponent is of the intention to apply for an Environmental Clearance Certificate for the proposed establishment of Lithium mine on Mining Licence (ML) 242 and Mining Licence (ML) 243 within EPL 7228, Omaruru, Erongo Region.

In accordance with Namibia's Environmental Management Act (No. 7 of 2007) and EIA regulations (GN 30 of 6 February 2012), you/r office as a potentially Interested and/or Affected Party (I&AP), are hereby informed of the Proponent's intention to apply for an Environmental Clearance Certificate and is invited to register as an I&AP and to provide comments and/or feedback, should there be any.

Find attached a Background Information Documents (BID) For ML242 and ML 243 respectively, providing information relevant to the proposed development, short overview of the receiving environment, and an invitation to submit comments/questions/concerns is available from our office.

Comments and questions should be submitted **in writing** to Minera-Xplore Consultancy CC by way of:

- E-mail your comments/concerns or input to Minera-Xplore Consultancy CC ([info@minera-xplore.com](mailto:info@minera-xplore.com) / [frontdesk@minera-xplore.com](mailto:frontdesk@minera-xplore.com)) or
- Post your comments/concerns or input to Minera-Xplore Consultancy CC (PO Box 31671, Windhoek).

**DEADLINE FOR REGISTRATION AND SUBMISSION OF COMMENTS AS PART OF THE FIRST ROUND OF PUBLIC CONSULTATION IS 14 January 2022**

All registered I&AP will be kept informed throughout the process.

Should there be any questions, please contact us?

**Kind regards**

N. Ndakunda

**Environmental Impact Assessment for the proposed establishment of Lithium mine on Mining Licence (ML) 243, Omaruru, Erongo Region**

**Proponent:** Xinfeng Investments (Pty) Ltd

**Date:** 20 December 2021

**Project location:** 45 km WNW of Omaruru, Erongo Region.

**This document is aimed at:**

- Giving an overview of the project's proposed activities,
- Provision of information on the Environmental Scoping Assessment (ESA) process,
- Seeking input from interested and affected parties (I & APs) through public participation invitations.

The purpose of this Background Information Document (BID) is to notify all interested and affected parties (I&APs) about the Environmental Impact Assessment (EIA) being undertaken for the Mining Licence application on EPL 7228 situated approximately 45 km west-northwest (WNW) of the Town of Omaruru, Erongo Region. Project area covers: farm Kohero 113, Goedehoop 157, Gross Okombahe 193, Ehuuro 120, Okarundu Nord West 118, Okarundu North 121. The BID provides an opportunity for I&AP to register and submit any comments, questions or issues pertaining to the proposed project.

## **1. Introduction**

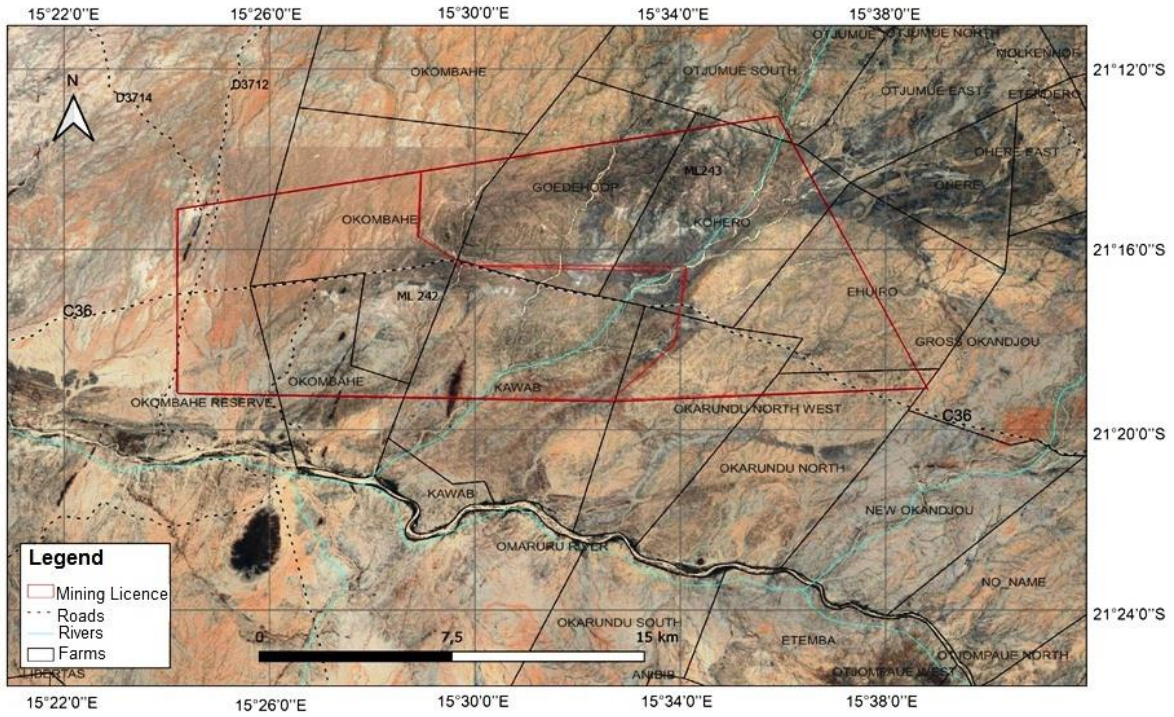
Xinfeng Investments (Pty) Ltd(the proponent) holds mineral rights under the Exclusive Prospecting License (EPL) 7228. The Mining Licence (ML) application area covers an area of 13680.3084 Ha.Coordinate from the centre of the ML is (-21.257208, 15.585606).Mineral rights valid under this EPL are Base & Rare metals, Industrial Minerals and Precious Metals. The applicant has launched a mining licence application with theMinistry of Mines and Energy (MME). The proponent intends to carry out Lithium mining operations on the Mining License (ML 243) within Exclusive Prospecting Licence (EPL 7228).The area falls under the Omaruru jurisdiction and covers the farms Kohero 113, Goedehoop 157, Gross Okombahe 193, Ehuuro 120, Okarundu Nord West 118 and Okarundu North 121.



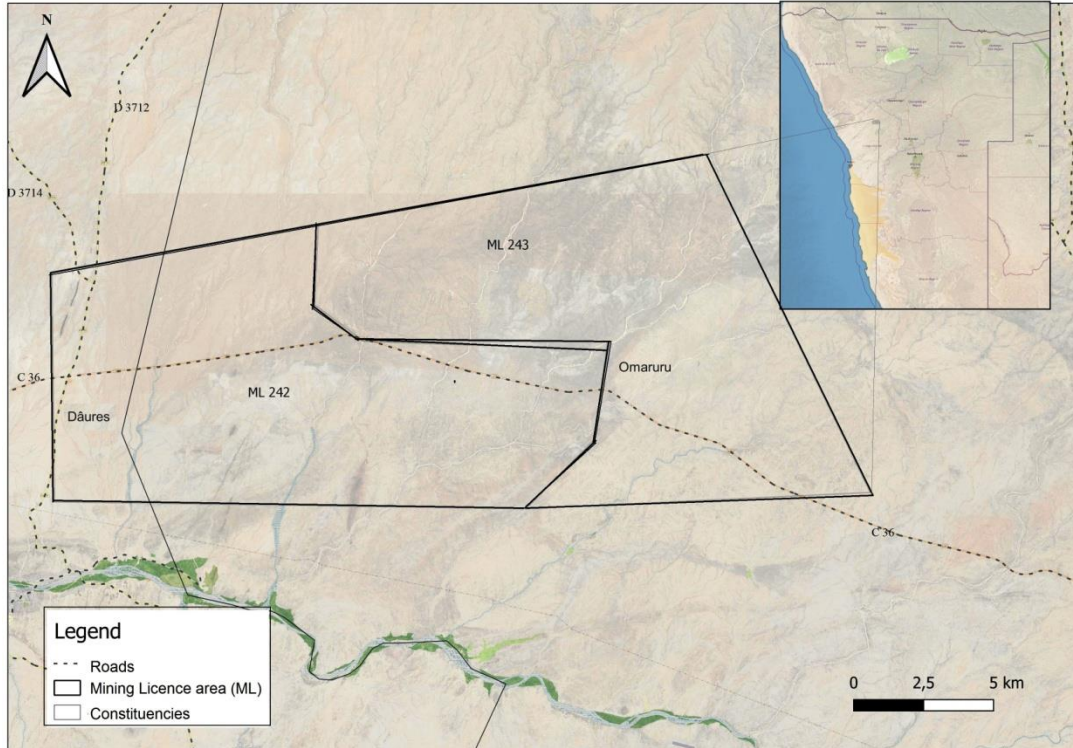
<b>Coordinates covered by Mining Licence area (ML 243)</b>								
Latitude				Longitude				
1	21°	19'	44.87"	S	015°	33'	09.36"	E
2	21°	18'	24.70"	S	015°	34'	34.22"	E
3	21°	16'	40.84"	S	015°	34'	50.28"	E
4	21°	16'	31.59"	S	015°	29'	48.24"	E
5	21°	15'	48.95"	S	015°	28'	46.45"	E
6	21°	14'	15.41"	S	015°	28'	51.37"	E
7	21°	12'	54.51"	S	015°	36'	52.42"	E
8	21°	19'	26.15"	S	015°	40'	16.57"	E

Environmental Assessment is needed in order to assess the potential environmental and socio-economic impacts as well as to achieve better developmental interventions through protecting human, physical, and biotic environments. The proposed mining activities falls under the activities that are listed in the Environmental Management Act, 2007 (Act No. 7 of 2007) and EIA Regulations (2012). These activities cannot be undertaken without an Environmental Clearance Certificate (ECC). The assessment covers the Lithium open pit mine and supporting infrastructures for the following developmental stages: Construction, operation, ongoing monitoring and rehabilitation, decommissioning, closure and aftercare.





**Fig. 1.** Google Earth image showing the locality of ML 243 within EPL 7228.



**Fig. 2.** Locality of ML243 application area in the western central Namibia



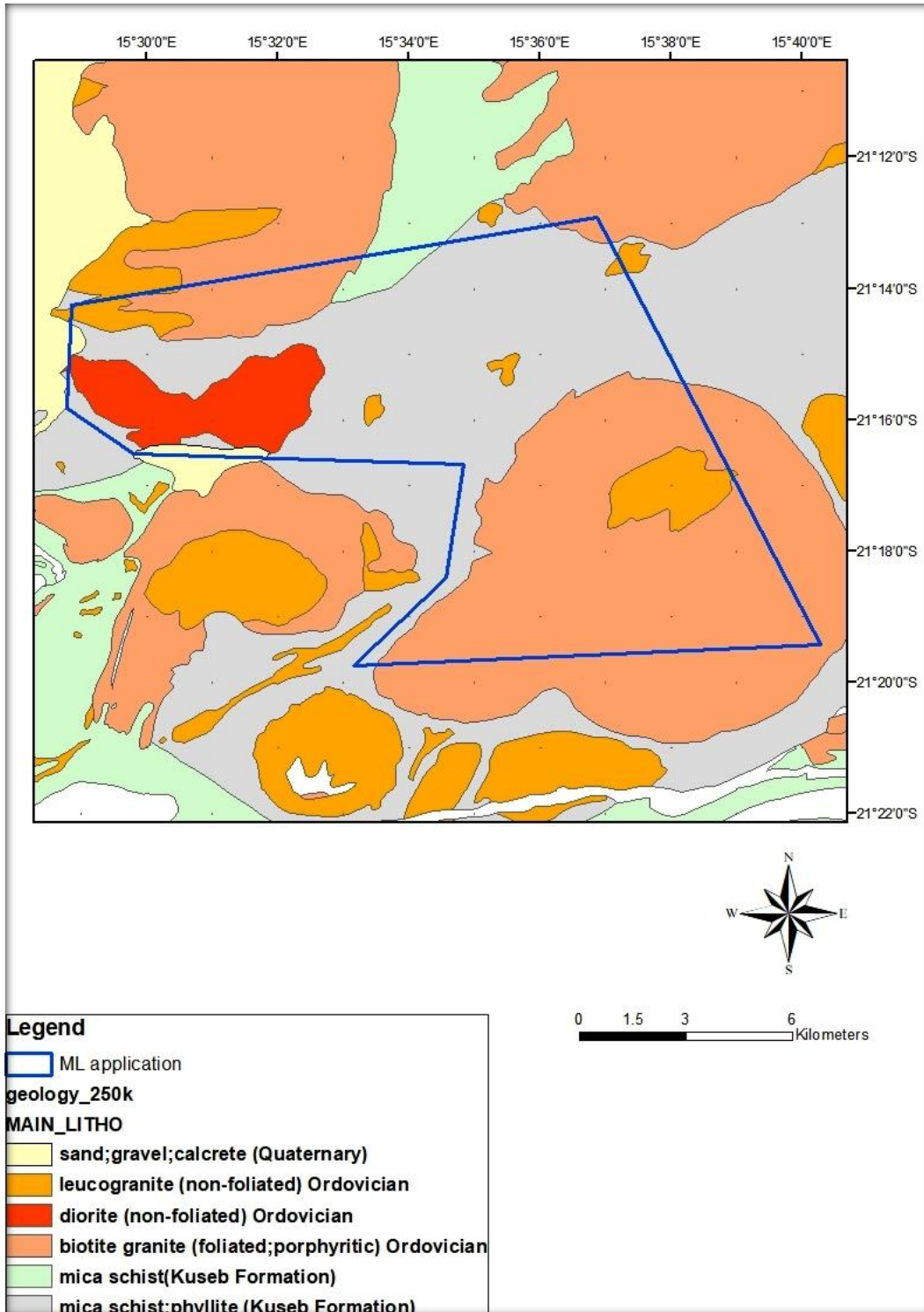
## 2. Project description

Lithium is one of the most critical metals in modern industry. It is the lightest metal on Earth and is used in batteries to power various electrical and electronic goods including mobile phones and electric cars. The demand for lithium (Li) is growing as a result of increasing production of various electrical and electronic products. In order to meet this demand, many new sources of Li need to be developed. In the proposed project, Lithium will be mined from pegmatites using conventional open pit mining technique. Lithium minerals are numerous and include spodumene, eucryptite, petalite, bikitaite, lepidolite, amblygonite and others. Currently, spodumene is by far, the most important Li-bearing mineral, and petalite along with lepidolite representing sources of minor economic importance. The operations will include mining and beneficiation processes which will involve extraction of ore, crushing, grinding, sorting, dense medium separation, gravity separation, magnetic separation, further purification and washing to refine the ore and prepare it for further mineral processing. Lithium chemicals, especially lithium carbonate and lithium hydroxide, are the raw materials needed to create cathodes because they have a high energy density, allowing more energy to be stored. Currently, the top four lithium-demanding markets are battery, glass, ceramics and lubricating greases. With battery industry, currently being the biggest lithium-demanding market.

## 3. Geology of the study area

The project area lies within the NE-trending, Damara orogenic belt which forms part of the Pan-African collisional belts in southern Africa. In the Damara Belt, the Kalahari Craton was subducted beneath the Congo/Angola Craton and continental collision is dated at ~542 Ma (Miller, 2008). Meta-sedimentary rocks within the ML application area are mica schist and phyllites of the Kuiseb Formation (Fig. 3). Extended portions of the ML application area are covered by Damara intrusives and these are the non-foliated leuco-granites of Ordovician age, non-foliated diorite of Ordovician age as well as foliated biotite granite of Ordovician age (Fig. 3). Sand, gravel and calcrete of quaternary age cover some portions of the western parts of the ML application area. Leuco-granites are associated with LCT pegmatites that are known to host tin, lithium, niobium and REE in the area.





**Fig 3.** Geology of the proposed project area (ML 243).



#### 4. Biodiversity

As with all developmental projects in pristine areas impacts on fauna and flora are inevitable as such identification of high-risk habitats prior to commencement of the proposed activities coupled with environmentally acceptable mitigations will lessen the severity of the overall impact. The project area falls under Semi-desert Savannah and Transition Zone (Giess 1971, Van der Merwe 1983) and is described as mainly comprised of shrubs such as *Leucosphaera bainesii*, *Monechma genistifolia* and *Blepharis pruinosa*. Large tree species such as *Acacia erioloba* are confined to the drainage lines. The grass cover is sparse and consists of the climax grasses *Stipagrostis obtusa* and *Stipagrostis uniplumis* (Giess 1971). Vertebrate fauna species that may likely be affected by the proposed activities will be mainly those with limited mobility such as some reptiles. The overall diversity and abundance of large herbivorous mammals is regarded as “moderate” (Mendelsohn *et al.* 2002).

#### 5. Infrastructure and Services

- The project area is located 45 km WNW of the town of Omaruru and is accessible via C36 gravel road. The two gravel roads are well-maintained. Extension of off-roadtracks to be constructed in consultation with landowners.
- Diesel and solar power will be used as backup while bulk power supply will be sourced via Erongo Red Regional Electricity distributor.
- Water is currently supplied through existing farm boreholes, once the project commences, bulk water will be supplied to by NamWater.

#### 6. Potential Impact Identified

- The main potential impacts and opportunities that has been identified for this proposed project are as follows:  
**Positive impacts**
  - contribution to National and regional economic development
  - Provision of raw materials
  - Creation of upstream investment opportunities (i.e. for suppliers).



- Job creation
- Negative Impacts**
- Air and noise pollution
  - Surface water and groundwater pollution
  - Loss of biodiversity
  - Landscape changes & visual impacts
  - Land use conflict

### **Environmental assessment process/ way forward**

Identifying risks, mitigation measures

Preparing the draft Environmental Scoping Report and Environmental management plan

Preparing the final Environmental Scoping Report and Submitting to MET for public review

Awaiting decision from Authorities

Communicate decision to interested and affected parties

### **7. All stakeholders/ Interested and affected parties (I&APs)**

Public participation process gives you the opportunity to obtain information about the proposed project as well as raise any environmental issues related to the project. The participant can respond to the newspaper adverts and register as an interested and affected party (I&AP) for their name to be added to the I&AP list in order to be involved in all steps of the EIA process.

**Registration of all interested and affected parties and submission of comments:**



In accordance with Namibia's Environmental Management Act (No. 7 of 2007) and EIA regulations (GN 30 of 6 February 2012), all interested and affected parties (I&APs) are invited to register and submit comments, concerns or questions in writing via **email:** [info@minera-xplore.com](mailto:info@minera-xplore.com) or [frontdesk@minera-xplore.com](mailto:frontdesk@minera-xplore.com) on or before Friday **14<sup>th</sup> January 2022**

### Registration and comments

#### **Environmental Impact Assessment for the proposed establishment of Lithium mine on Mining Licence (ML) 243, Omaruru, Erongo Region**

I hereby wish to register as an Interested and Affected Party (I&AP) in respect of the undergoing environmental scoping assessment on proposed Lithium mining project.

Participant name:	Organization/affiliation:
Position:	Email:
Contact number:	Postal Address:
My questions, comments, issues or concerns on this project are as follows:	

Kindly fill in your particulars and return completed document to be registered as an interested and affected party Party (I&AP).

Minera-Xplore Consultancy Contact Number: +264 85 761 4750 Email: <a href="mailto:info@minera-xplore.com">info@minera-xplore.com</a>
--

Signature: \_\_\_\_\_

Date: \_\_\_\_\_

Please return this completed document (with all requested details)