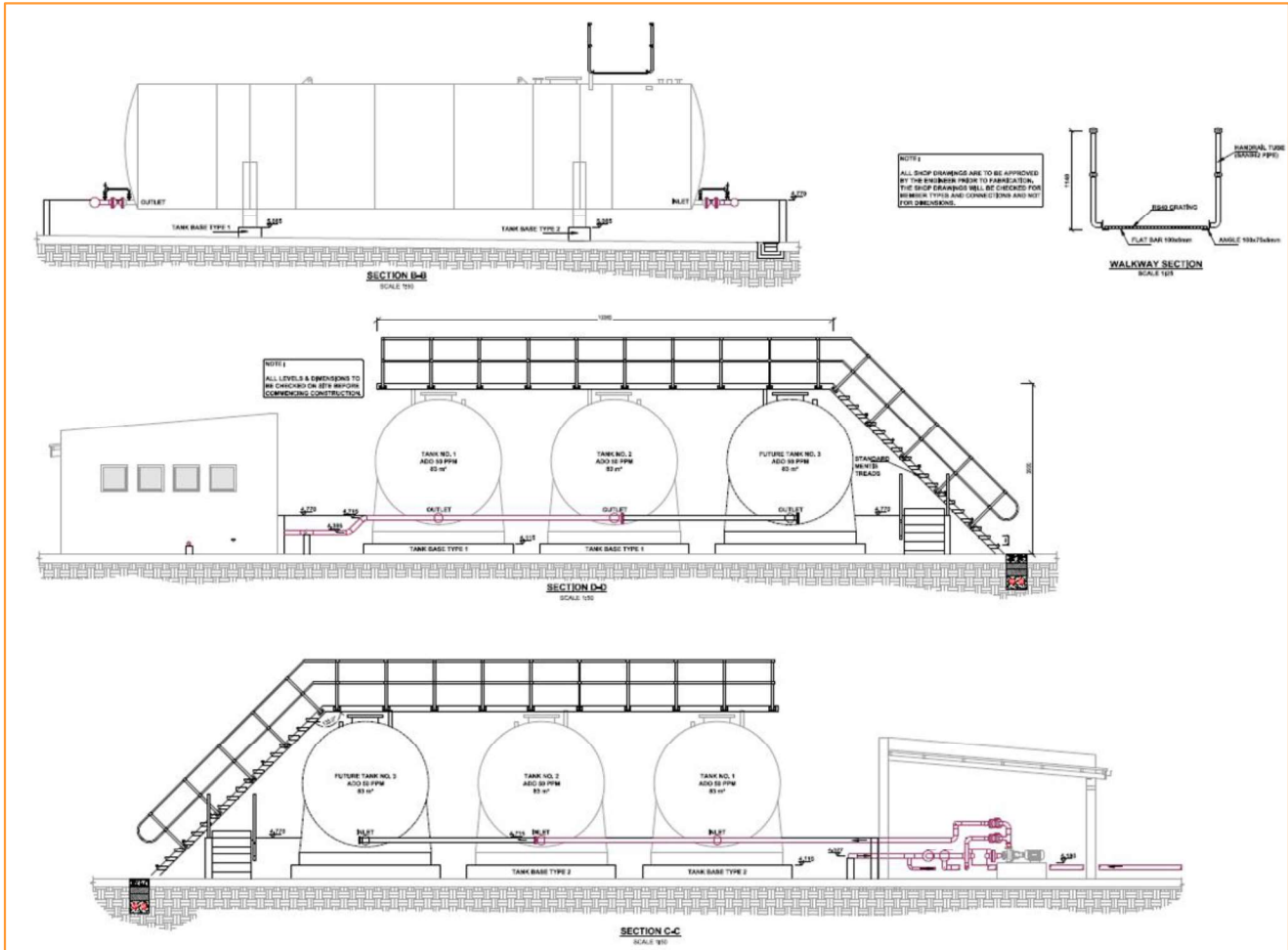


## 2. PROJECT DESCRIPTION

This section provides an overview of the conceptual operational design and an overview of the sites and technology selection process for the proposed installation and operation of the diesel fuel storage facility (**Figure 3**).



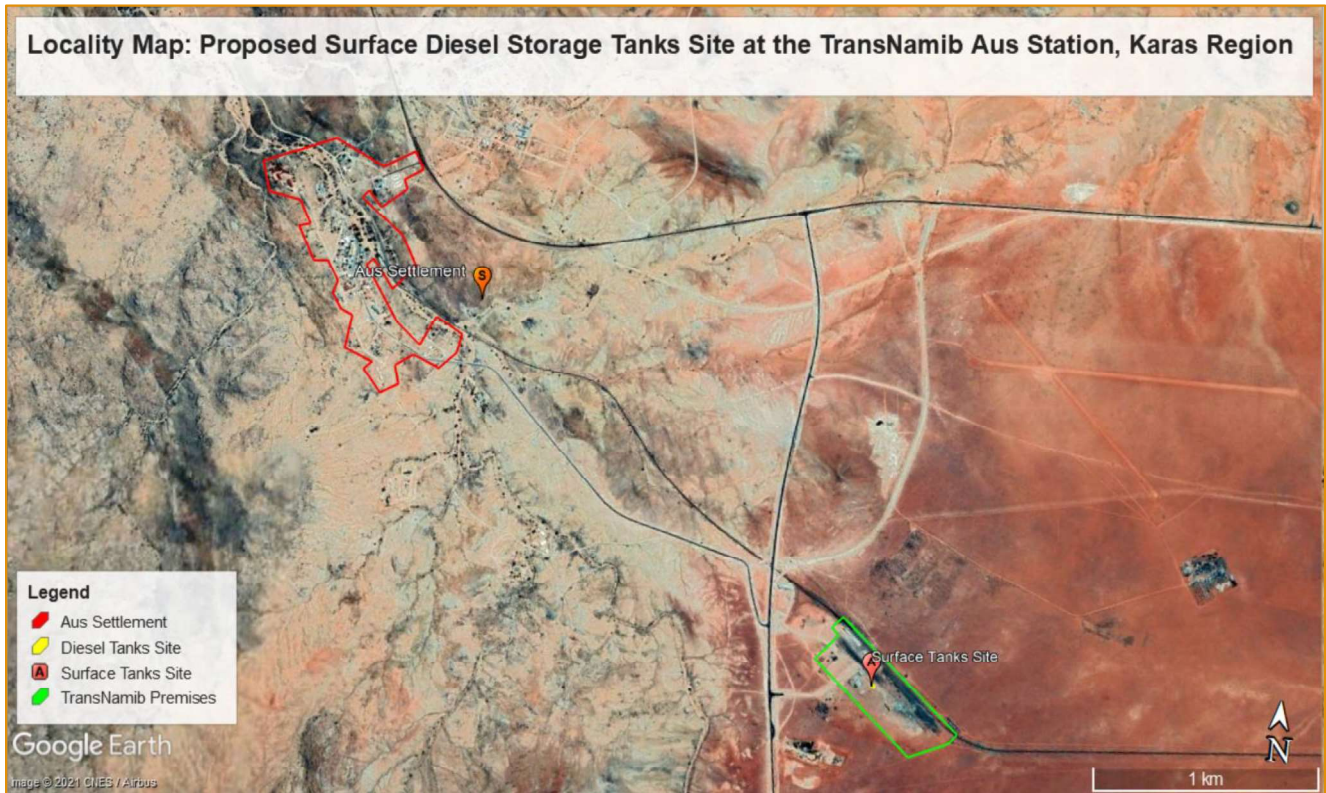
**Figure 3:** Illustration of the mechanical / tank stair and walkway layout of the proposed facility

### 2.1. SITE SELECTION

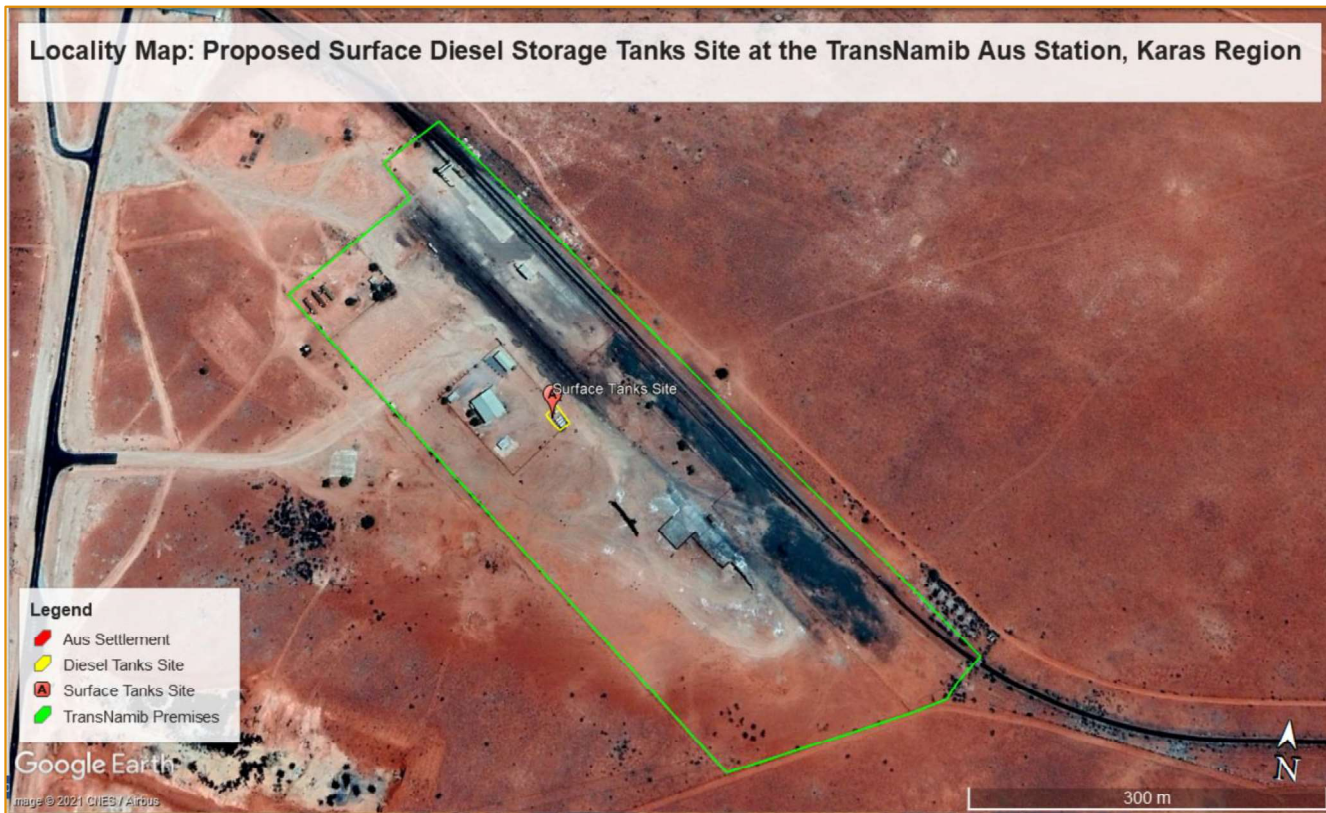
The site selection process took into consideration key site selection factors such as land availability, proximity to sensitive receptors, site accessibility, topography, risks, current land use. Hence, keeping the storage distant from the settlements and at the TransNamib Ausnek Depot offers the safest location (**Figure 4 and 5**, corner GPS coordinates presented in **Table 3**) in terms security and social safety.

**Table 3:** Corner coordinates of the proposed development site

Corner point	Latitude	Longitude
A – Ausnek Depot	-26.681479°	16.286336°
B – Ausnek Depot	-26.681570°	16.286261°
C – Ausnek Depot	-26.681445°	16.286103°
D – Ausnek Depot	-26.681361°	16.286195°



**Figure 4:** Haulage route along the existing railway line through different land uses in the Walvis Bay town



**Figure 5:** Haulage route along the existing railway line through different land uses in the Gobabis / Witvlei town