

Borrow Pit Coordination List

Suitable materials are needed for the construction of the selected layer, subbase, and base course. Fill material is also required to ensure a vertical alignment appropriate for the chosen design speed.

To achieve the abovementioned, suitable material is required from borrow pits. These pits are opened using various heavy-duty machines and the material is hauled from the pit to the required sections of the road where the material is needed. It is imperative that the material excavated complies with the engineering standards required for the construction of the road and is therefore tested on a regular basis.

Another important issue is hauling distance. The borrow pits cannot be situated too far from the section of the road where the material is needed, therefore borrow pits cannot be located too far apart (incurring costs due to hauling).

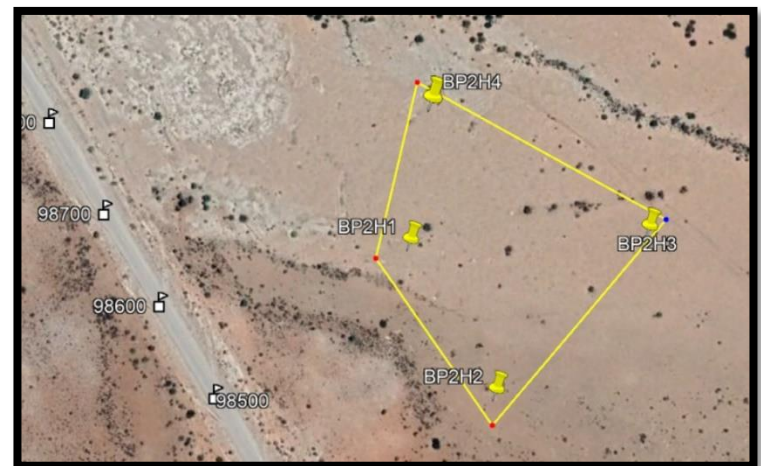
The following detail is applicable to the various borrow pits that will be used during the construction phase of the project:

D1953 (Karibib to Otjimbingwe)
CS/RFP/RA-02/2020
BORROW PIT INFORMATION

Borrow-pit ID	General Description	Approx. Chainage (km)	Co-Ordinate		Distance from the CL (m)	Approx. Area (ha)	Material Quality	Proposed Use
			Lat	Long				
1	New Borrow Pit	102.0	21°58'10.52"	15°50'26.32"	1660m	5.47 ha	G6-G5	FILL; SSG; SUBBASE



Borrow-pit ID	General Description	Approx. Chainage (km)	Co-Ordinate		Distance from the CL (m)	Approx. Area (ha)	Material Quality	Proposed Use
			Lat	Long				
2	Existing Borrow Pit	98.6	21°59'26.29"	15°52'36.35"	350m	4.44 ha	G8-G6	FILL; SSG



Borrow-pit ID	General Description	Approx. Chainage (km)	Co-Ordinate		Distance from the CL (m)	Approx. Area (ha)	Material Quality	Proposed Use
			Lat	Long				
3	New Borrow Pit	90.6	22°02'57.02"	15°55'07.52"	100m	3.23 ha	G6-G4	FILL; SSG; SUBBASE



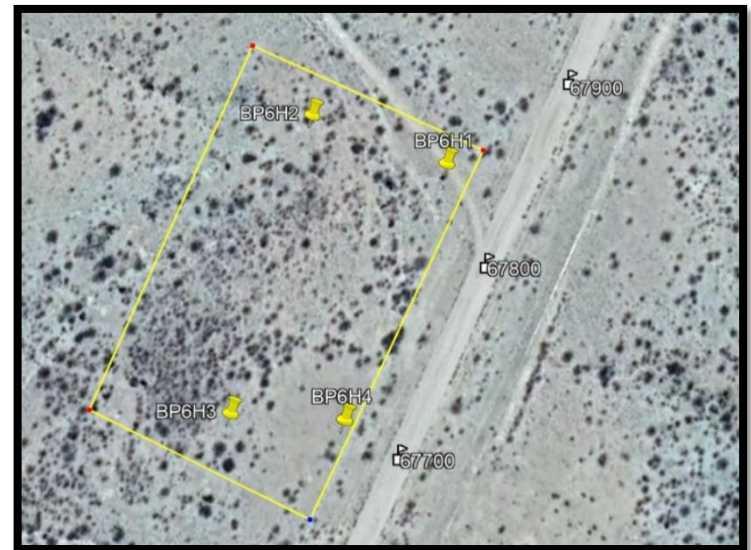
Borrow-pit ID	General Description	Approx. Chainage (km)	Co-Ordinate		Distance from the CL (m)	Approx. Area (ha)	Material Quality	Proposed Use
			Lat	Long				
4	New Borrow Pit	81.5	22°07'22.66"	15°57'14.91"	160m	3.12 ha	G5-G4	SSG; SUBBASE; BASE



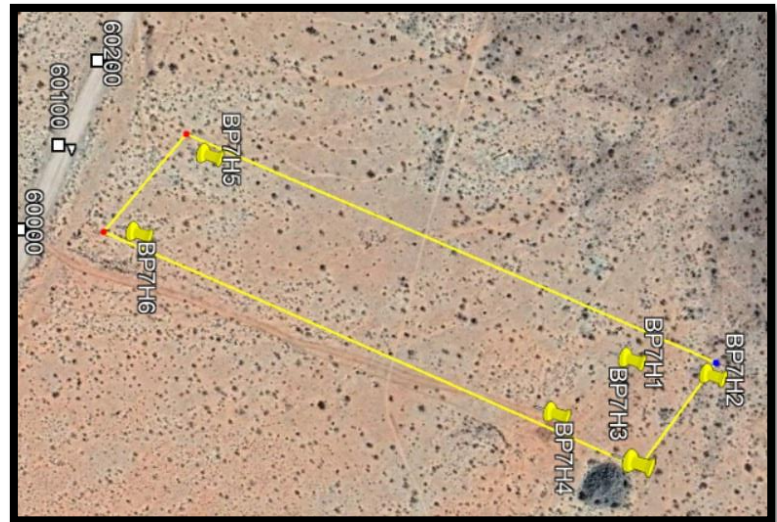
Borrow-pit ID	General Description	Approx. Chainage (km)	Co-Ordinate		Distance from the CL (m)	Approx. Area (ha)	Material Quality	Proposed Use
			Lat	Long				
5	Existing Borrow Pit	77.3	22°09'18.69"	15°58'38.45"	330m	3.87 ha	G5	SSG; SUBBASE



Borrow-pit ID	General Description	Approx. Chainage (km)	Co-Ordinate		Distance from the CL (m)	Approx. Area (ha)	Material Quality	Proposed Use
			Lat	Long				
6	New Borrow Pit	67.8	22°13'49.73"	16°00'27.69"	100m	2.37 ha	G5	SSG; SUBBASE



Borrow-pit ID	General Description	Approx. Chainage (km)	Co-Ordinate		Distance from the CL (m)	Approx. Area (ha)	Material Quality	Proposed Use
			Lat	Long				
7	New Borrow Pit	60.1	22°16'56.92"	16°02'22.83"	500m	8.34 ha	G5-G4	SUBBASE; BASE



Borrow-pit ID	General Description	Approx. Chainage (km)	Co-Ordinate		Distance from the CL (m)	Approx. Area (ha)	Material Quality	Proposed Use
			Lat	Long				
8	Existing Borrow Pit	54.6	22°18'27.07"	16°05'14.99"	500m	6.5 ha	G6-G5	SSG; SUBBASE

