

## PROJECT LOCATION

The mining claim 72121 is situated approximately 8 Km South of Karibib townland when using the D1953 which branches out from the C32 road South of Karibib in Erongo Region as shown in **Figure 1**. The mining claim covers an area of 10.032 Ha and there are active existing dimension stone mining operations taking place in the adjacent area.

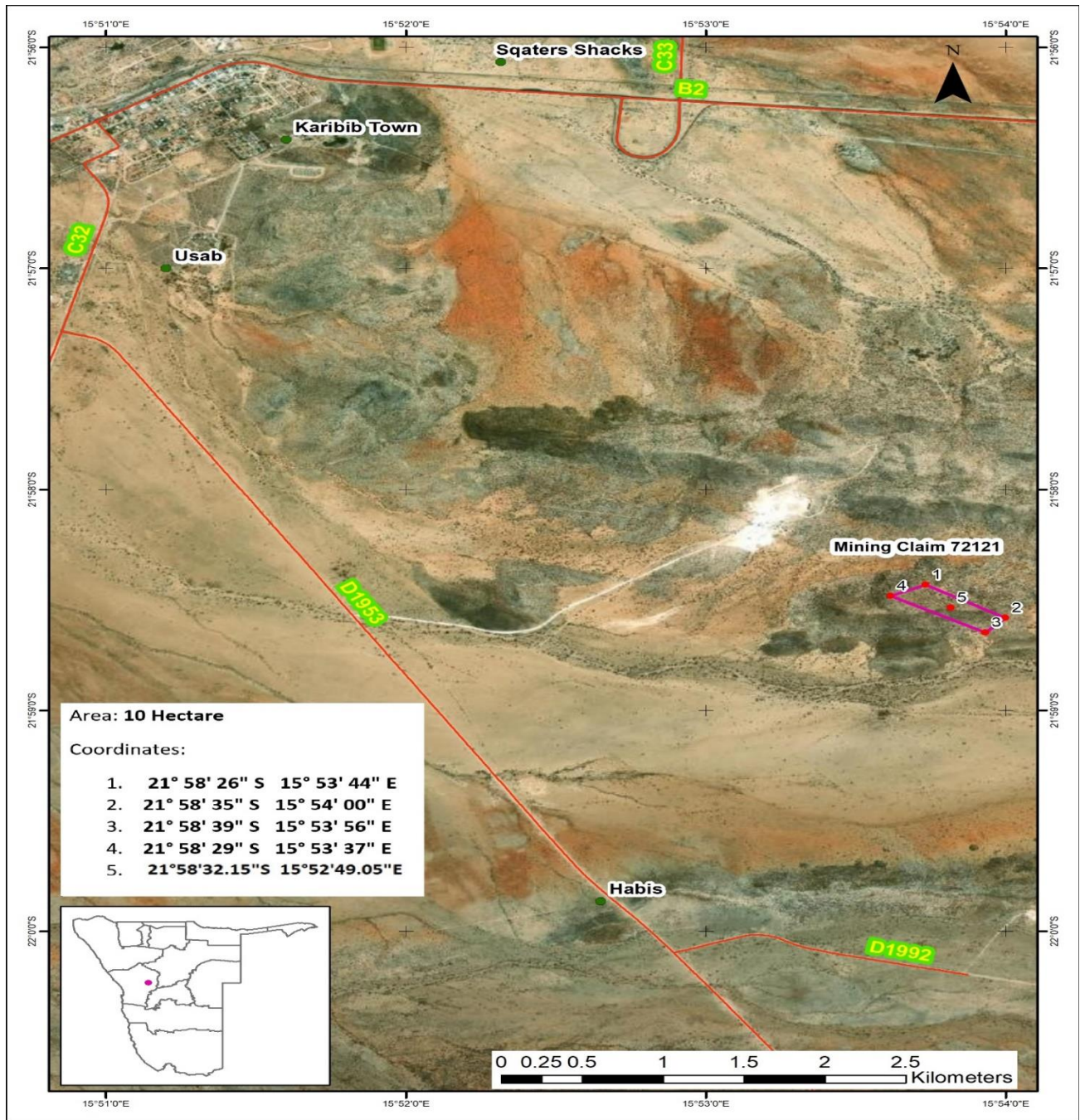


Figure 1: The mining claim proposed for dimension stones mining activities (Shown above by the purple quadrant Mining Claim 72121). (Google Earth, 2022).