

<p>Project Name:</p>	<p>BACKGROUND INFORMATION DOCUMENT FOR THE REZONING OF PORTIONS A AND 205 OF THE REMAINDER OF OKAHANDJA TOWNLANDS NO. 277, THE CONSOLIDATION OF PORTIONS A AND 205 AND THE OPERATION OF THE BEEFCOR ABATTOIR ON CONSOLIDATED PORTIONS A AND 205</p>
<p>The Proponent:</p>	<p>Beefcor Meat Suppliers (Pty) Ltd Plot 205 OKAHANDJA</p> 
<p>Prepared by:</p>	<div data-bbox="560 1104 1445 1346" style="border: 1px solid black; padding: 10px;">  <p>Green Earth ENVIRONMENTAL CONSULTANTS</p> </div> <p>1st floor Bridgeview Offices & Apartments, No. 4 Dr Kwame Nkrumah Avenue, Klein Windhoek, Namibia PO Box 6871, Ausspanplatz, Windhoek</p>
<p>Release Date:</p>	<p>December 2023</p>
<p>Consultant:</p>	<p>C. Du Toit C. Van Der Walt Cell: 081 127 3145 Email: charlie@greenearthnamibia.com</p>

Table of Contents

1. Introduction	3
2. Background Information on Project	3
2.1 Site details	3
3. Supporting Bulk Services and Infrastructure Provision	7
3.1. Access	7
3.2. Water supply / requirements	8
3.3. Electricity	9
3.4. Sewage disposal	9
3.5. Storm water and drainage	9
3.6. Solid waste	10
3.7. Fire protection	11
4. Listed activities triggered by the proposed project	11
5. Approach to the Environmental Assessment of the Project	12
5.1. Aims of the Assessment Process	12
5.2. Methodology	13
6. Expected Impacts on receiving environment	13
7. Public Involvement Program	14

List of Figures

<i>Figure 1: Location of Okahandja</i>	<i>4</i>
<i>Figure 2: Locality Plan of Portion A and Portio 205</i>	<i>5</i>
<i>Figure 3: Locality Pan of Portion A and Portion 205 with image</i>	<i>6</i>
<i>Figure 4: Offices on Beefcor on Project Site</i>	<i>7</i>
<i>Figure 5: Entrance Road to Project Site from southern side</i>	<i>8</i>
<i>Figure 6: Entrance to Project Site</i>	<i>8</i>
<i>Figure 7: Water connection to site and water storage tanks on site</i>	<i>9</i>
<i>Figure 8: Solar panels on site providing electricity</i>	<i>9</i>
<i>Figure 9: Waste storage site</i>	<i>10</i>
<i>Figure 10: Fire extinguisher on site</i>	<i>11</i>

THE FOLLOWING IS A BACKGROUND INFORMATION DOCUMENT FOR THE ENVIRONMENTAL IMPACT ASSESSMENT AND ENVIRONMENTAL MANAGEMENT PLAN TO OBTAIN AN ENVIRONMENTAL CLEARANCE FOR THE REZONING OF PORTIONS A AND 205 OF THE REMAINDER OF OKAHANDJA TOWNLANDS NO. 277, THE CONSOLIDATION OF PORTIONS A AND 205 AND THE OPERATION OF THE BEEFCOR ABATTOIR ON CONSOLIDATED PORTIONS A AND 205 OF THE REMAINDER OF OKAHANDJA TOWNLANDS NO. 277, OKAHANDJA

1. Introduction

Green Earth Environmental Consultants have been appointed by the proponent, Beefcor Meat Suppliers (Pty) Ltd, to attend to and complete an Environmental Impact Assessment (EIA) and Environmental Management Plan (EMP) in order to obtain an Environmental Clearance Certificate for the rezoning of Portions A and 205 of Okahandja Townlands No. 277 from 'undetermined' to 'special', the consolidation of Portions A and 205 and to operate an abattoir and its associated infrastructure on consolidated Portions A and 205 of the Remainder of Farm Okahandja Townlands No. 277, Okahandja as per the requirements of the Environmental Management Act (No. 7 of 2007) and the Environmental Impact Assessment Regulations (GN 30 in GG 4878 of 6 February 2012).

The Background Information Document (BID) serves to convey information regarding the proposed project to Interested and Affected Parties (I&APs) to allow them the opportunity to comment on the proposed project.

This document contains the following information:

- A brief background on the proposed project.
- The approach to the environmental assessment process.
- Environmental and planning issues identified.
- How to become involved.

2. Background Information on Project

2.1 Site details

Portions A and 205 of the Remainder of Farm Okahandja Townlands No. 277, Okahandja is located about 2km south from the Okahandja Central Business area south of the B1 main road. The Proponent is operating an abattoir and associated activities on Portion 205 of the Remainder of Farm Okahandja Townlands No. 277. The abattoir is in operation since 2015. The business has grown to the extent that it needs to increase its facilities to accommodate current as well as new activities, as follows: extension of solar system to supplement electricity obtained from the Cenored network; additional space for processing plants for bone meal and blood meal; staff housing for key personnel; parking and sheds for trucks; and offices to accommodate growing number of personnel and store facilities. They applied to Okahandja Town Council to purchase a portion of ±4ha (Portion A of Re/Farm Okahandja Townlands No. 277) located directly northwest of Portion 205 to extend the site for the accommodation of the additional facilities. Both Portions A and 205 is currently zoned 'undetermined' and must be

rezoned to 'special' as per the stipulations of the Okahandja Town Planning Scheme. It is the intension of Beefcor Meat Suppliers to continue with the operations of the abattoir on consolidated Portion A and 205 for which an Environmental Clearance is required. The locality of the site is shown on the plans below:



Figure 1: Location of Okahandja

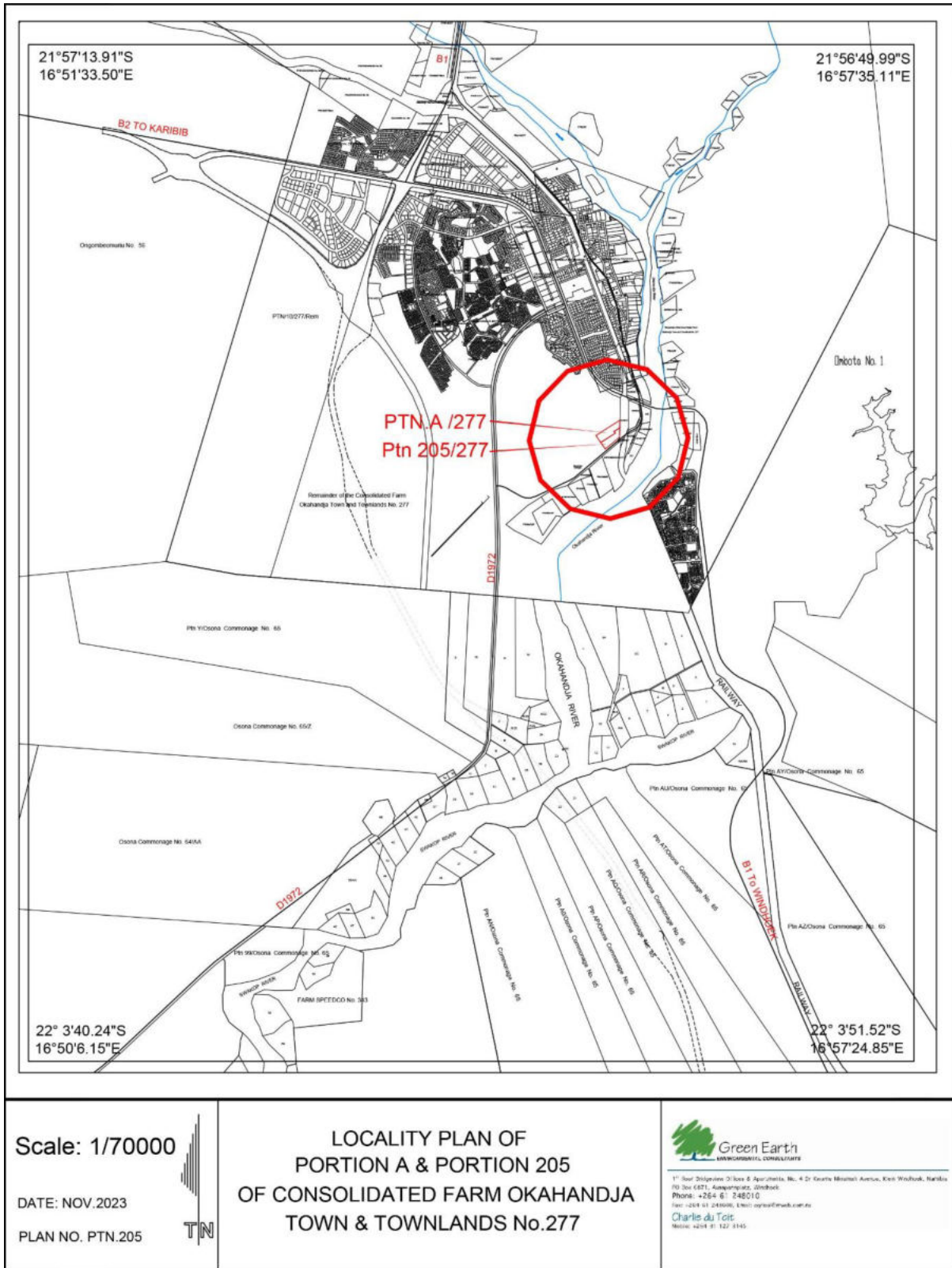


Figure 2: Locality Plan of Portion A and Portio 205

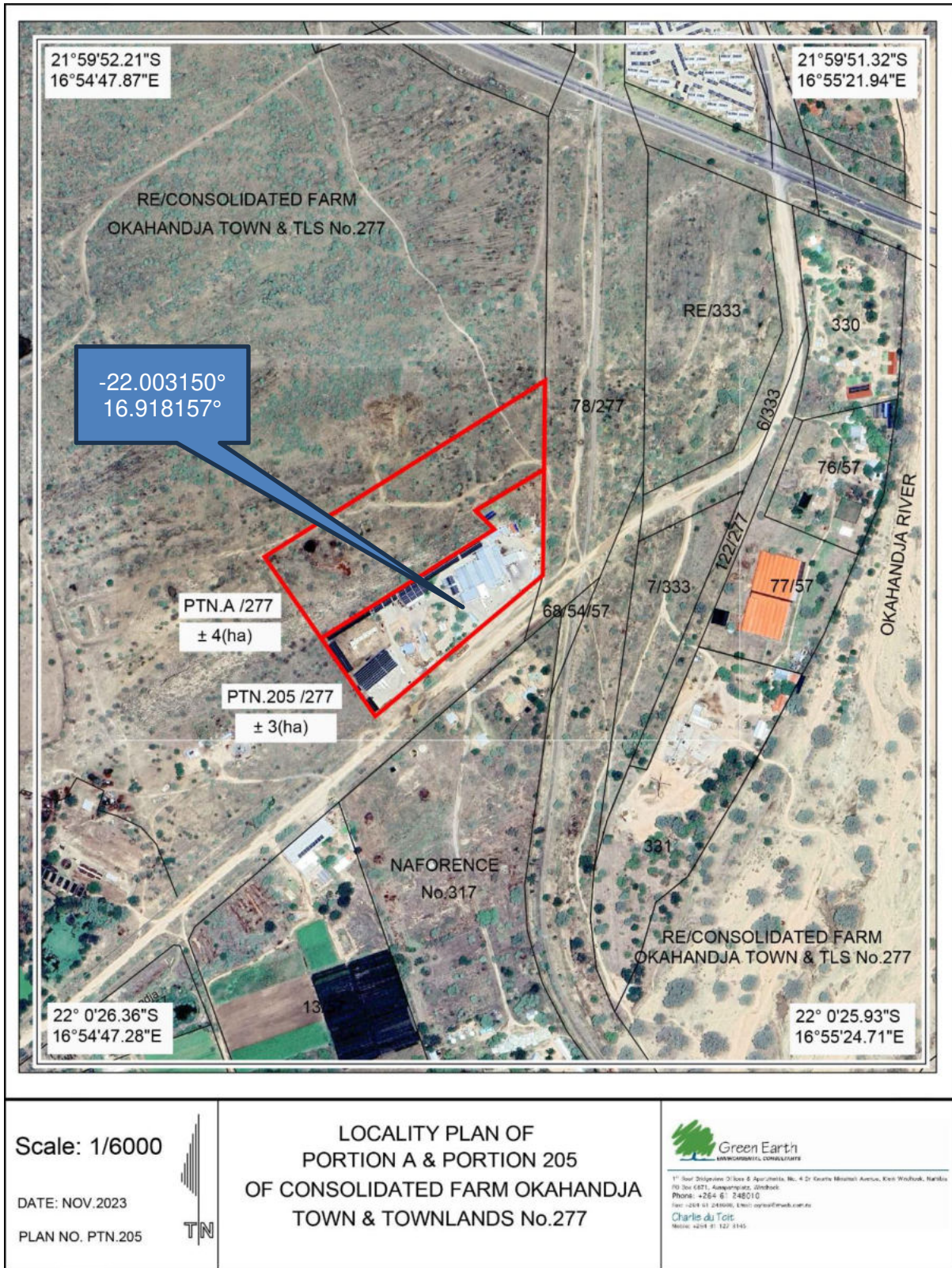


Figure 3: Locality Pan of Portion A and Portion 205 with image



Figure 4: Offices on Beefcor on Project Site

3. Supporting Bulk Services and Infrastructure Provision

The Portion is located within the Okahandja Municipal Area, therefore it is serviced by some municipal bulk services. The proposed facility will require the following services:

3.1. Access

Portion A and Portion 205 take access from the southern side from an existing gravel road which links the site with Trunk Road B1. This is a gravel road which is maintained by the Municipality. See below the entrance from the gravel road and the entrance gate to the Project Site:

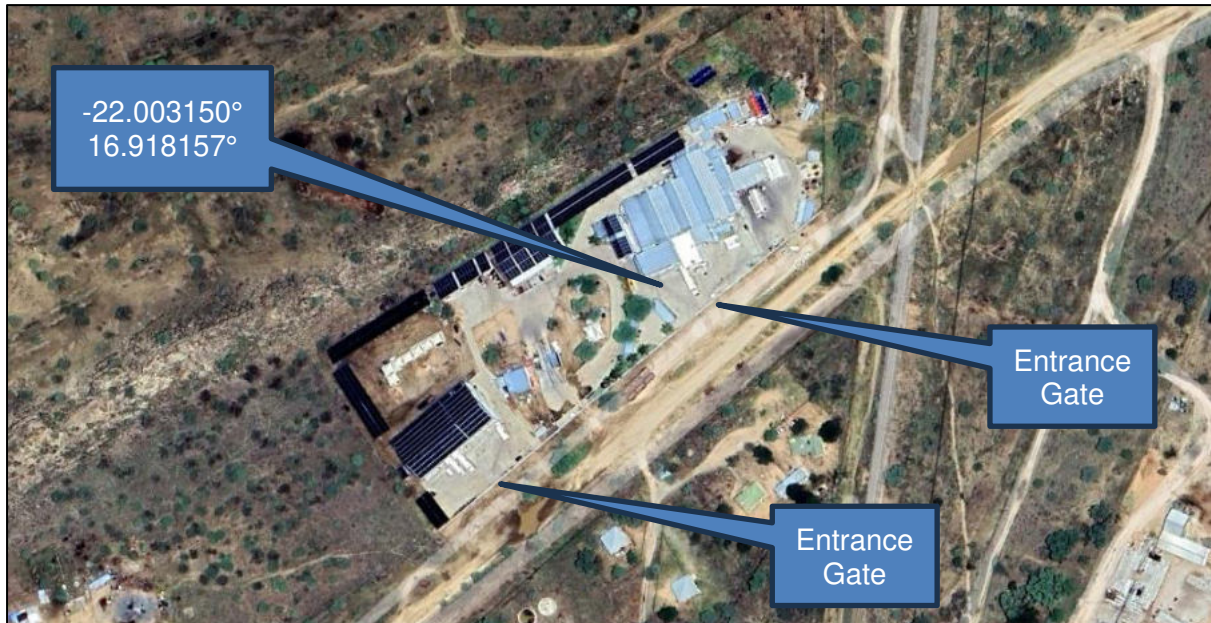


Figure 5: Entrance Road to Project Site from southern side



Figure 6: Entrance to Project Site

3.2. Water supply / requirements

Currently ± 160 cattle are slaughtered per day on a six day per week cycle. The water usage per head of cattle (including the supporting activities of the abattoir) is estimated on $1,2\text{m}^3/\text{Livestock unit}$. Once the proposed upgrades and extensions are completed, it is intended to slaughter ± 200 cattle per day.

Water is obtained from the following sources:

- Okahandja Municipality/NamWater
- Onsite boreholes

The site has onsite elevated bulk storage facilities which can accommodate at least 48 hours of backup water in case there is an interruption of supply from the current sources. See below the water connection to the site and the water storage tanks:



Figure 7: Water connection to site and water storage tanks on site

3.3. Electricity

The abattoir and supporting activities require $\pm 100\text{kWh}$ per livestock unit slaughtered. The electricity demand assumes that a maximum of ± 210 livestock units/day will be slaughtered in peak supply periods (average 200/day).

Electricity is obtained from Cenored and an onsite 1MWh Photovoltaic Plant. It is the intension to increase the power generated from solar to a total of ± 1.5 megawatt. See below some of the solar panels on site:



Figure 8: Solar panels on site providing electricity

3.4. Sewage disposal

The abattoir and supporting facilities are linked to the municipal sewer network. Both the household sewer as well as the abattoir sewer water (excluding blood, punch content and sludge) are thus disposed in the municipal sewer system for treatment by the Municipality of Okahandja.

3.5. Storm water and drainage

The general slope of the site is in a south westerly direction. The site has been leveled and landscaped to accommodate the existing abattoir and supporting infrastructure. Provision has been made for the accommodation of surface water/stormwater management to prevent stormwater damage to infrastructure.

3.6. Solid waste

The solid waste generated from the activities of the abattoir are the following:

- General household and office waste
- Paunch content and manure
- Special risk material (i.e. tonsils and intestines; brains, eyes, spinal cord, skull and vertebral column)
- Condemned material (parts of an animal inspected and judged, or otherwise determined, to be unacceptable for human and animal consumption and requiring sterilizing or destruction)
- Blood
- Sludge

This waste is managed/disposed of as follows:

General household waste – this waste is separated on site into recyclable and non-recyclable waste. The non-recyclable waste is collected by the Okahandja Municipality through their scheduled weekly waste collection and removal program and disposed of at the municipal landfill site. The recyclable waste is collected by a specialist waste recycler for recycling.



Figure 9: Waste storage site

Paunch content, manure and sludge – the paunch content and sludge are taken from the abattoir area via a separate pipeline / channels into settling tanks where it is allowed to settle. The excess water, after settling, is dumped into the municipal sewer system. The dewatered paunch content, sludge and manure collected from the lairage area is collected by a farmer and used for composting and fertiliser for crop farming.

Special risk and condemned material - the special risk and condemned materials are kept separately in a closed container and collected for feeding vultures (a vulture kitchen) for the project rehabilitating vultures.

Blood – the blood is collected separately and pumped into a tanker and transported to farms where it is disposed of as fertiliser.

3.7. Fire protection

The Proponent has the necessary fire protection infrastructure / extinguishers as per municipal requirements. A Fire Protection Specialist is contracted to introduce a proper fire protection plan with the required infrastructure and to oversee the annual auditing and maintenance of the infrastructure.



Figure 10: Fire extinguisher on site

4. Listed activities triggered by the proposed project

In terms of the Environmental Management Act (No. 7 of 2007) and the Environmental Impact Assessment Regulations (GN 30 in GG 4878 of 6 February 2012) an environmental impact assessment (EIA) report and management plan is required as the following listed activities are involved:

WASTE MANAGEMENT, TREATMENT, HANDLING AND DISPOSAL ACTIVITIES

- The construction of facilities for waste sites, treatment of waste and disposal of waste.
- Any activity entailing a scheduled process referred to in the Atmospheric Pollution Prevention Ordinance, 1976.
- The import, processing, use and recycling, temporary storage, transit or export of waste.

LAND USE AND DEVELOPMENT ACTIVITIES

- *The rezoning of land for industrial or commercial use;*

ENERGY GENERATION, TRANSMISSION AND STORAGE ACTIVITIES

The construction of facilities for –

- *The generation of electricity.*
- *The transmission and supply of electricity.*

WATER RESOURCE DEVELOPMENTS

- *The abstraction of ground or surface water for industrial or commercial purposes.*

HAZARDOUS SUBSTANCE TREATMENT, HANDLING AND STORAGE

- *The storage and handling of dangerous goods, including petrol, diesel, liquid petroleum gas or paraffin, in containers with a combined capacity of more than 30 cubic meters at any one location.*
- *Construction of filling stations or any other facility for the underground and aboveground storage of dangerous goods, including petrol, diesel, liquid, petroleum, gas or paraffin.*

The proposed project is thus subject to obtaining an Environmental Clearance.

5. Approach to the Environmental Assessment of the Project

The purpose of the Environmental Impact Assessment is to consider social, ecological, legal and institutional issues related to the intended use of the land, guided by the principles and stipulations of the Namibian Environmental Assessment Policy (1995) and Namibia's Environmental Management Act (2007), to determine the desirability of the proposed activities on the suggested area and to develop an Environmental Management Plan (EMP) to mitigate and manage environmental issues identified in the process.

To accomplish the above, the impact study will be undertaken and based on the outcome of the findings; further specialists' investigation might be required to fully assess all impacts.

5.1. Aims of the Assessment Process

- To ascertain existing environmental conditions on the site to determine its environmental sensitivity.
- To inform I&APs and relevant authorities of the details of the proposed activities and to provide them with an opportunity to raise issues and concerns.
- To assess the significance of issues and concerns raised.
- To compile an impact report detailing all identified issues and possible impacts, stipulating the way forward and identify specialist investigations required.
- To outline management guidelines in an Environmental Management Plan (EMP) to minimize and/or mitigate potentially negative impacts.
- To comply with Namibia's Environmental Management Act (2007) and its regulations (2012).

5.2. Methodology

a) Desktop sensitivity assessment

Literature available on the area will be reviewed to determine potential environmental issues and concerns.

b) Site assessment (site visit)

This involves investigating the environmental parameters on site in order to enable further understanding of the potential impacts on site.

c) Involvement of Interested and Affected Parties

Stakeholders will be given the opportunity to comment on the proposed activities and engage in the planning process. The findings of the assessment process will be incorporated in the environmental impact assessment report.

6. Expected Impacts on receiving environment

From previous experience with developments of this nature and comments received from Affected Parties, the following key impacts on the receiving environment can be expected:

6.1. Socio-economic environment

- Community health issues - transmission of diseases from the construction team and support staff to the local community.
- Increase in criminal activities during construction.
- Cultural/heritage impacts.
- Employment will be created during construction and operation.

6.2. Bio-physical environment

- Effect on natural and general ambiance of the area and surroundings.
- The clearing of some vegetation for the construction of structures.
- Animals and birds habituating on the site will be disturbed.
- Bad odours from a poorly managed site.
- The use of water during construction and operations.
- The generation of dust during construction and operations.
- Material wastage (packing, building waste) polluting the site and neighbouring environment.
- Health and safety of construction and operational staff if not attended to satisfactorily.
- Impact on surface and groundwater.
- Noise during construction of bulk services as well as from the operations once constructed and in operation.
- Surface drainage systems (flow of surface draining systems).

These impacts and others which will be identified during the environmental scoping procedures and the engagement of the interested and affected parties will be evaluated to determine the significance of impact and if and how these impacts can be mitigated.

The above-named aspects will be covered in the Environmental Management Plan to be mitigated.

7. Public Involvement Program

During the public consultation process, Green Earth Environmental Consultants do the following:

- Identify and inform key stakeholders, authorities, the local authority (municipality), and interested or affected members of the public (I&APs).
- Give notice of the proposed activity as per the requirement of the Regulations through national newspapers, site notices and letters.
- Provide I&APs with additional information on the proposed activity by sending them this Background Information Document (BID).
- Schedule a public meeting if there is enough public interest to which all registered and identified I&APs will be invited, facilitate stakeholder participation and engagement and provide details of issues raised during the public involvement program and scoping exercise.
- Record all comments of I&APs, supported by responses provided by Green Earth, in a report to be included in the EIA.
- Inform the Proponent of comments relevant to the project's planning, implementation and operations and for inclusion in the EMP and consideration.

As an important part of the Environmental Impact Assessment process, you as stakeholder or interested member of the public are invited to find out more about what is being proposed, the implications thereof on the environment and/or to raise any issues or concerns.

Should you have any questions regarding the project, please contact **GREEN EARTH Environmental Consultants** at the contact details (*Charlie du Toit: 081 127 3145 or carien@greenearthnamibia.com*) provided on *Page 1* of this document. **The closing date for any questions, comments, inputs or information is 26 January 2024.**

