

PROOF OF PUBLIC AND STAKEHOLDER CONSULTATIONS UNDERTAKEN

PUBLIC NOTICES PUBLISHED IN THE LOCAL NEWSPAPERS

NUUSREDAKTEUR

Paterson Graad: D1

NMH, 'n gelyke geleentheid werkgewer, het die volgende vakature vir 'n dinamiese en energieke persoon met Namibiese burgerskap.

Sluutprestasieareas

- Bereik teikens wat vir daaglikse aanlyn nuusdekking gestel is
- Bereik teikens wat vir daaglikse video inhoud gestel is
- Bereik teikens wat vir infografika gestel is
- Voldoen aan teikens wat vir algehele produksie gestel is
- Bestuur bydraes vir aanlynprogramme
- Hou toesig oor die bestuur van en monitor aanlyn kommentaar
- Bestuur inhoud van die gedrukte uitgawe
- Skep 'n omvattende nuusdagboek en ken stories aan verslaggewers toe deur met ander koerante en aanlynpublikasies te koördineer
- Bly op hoogte van nasionale en belangrike internasionale nuus
- Koördineer nuusinsameling
- Identifiseer en ontwikkel nuusberigte en -temas
- Gee opdragte aan verslaggewers en ontleed waar nodig

Kandidate op die kortlys moet 'n aanbieding van 20 minute voorberei oor hoe hulle van plan is om die sluitprestasieareas hierbo gelys te bereik wat hulle tydens die onderhoud moet aanbied.

Belangstellende kandidate wat vir hierdie pos kwalifiseer, kan hul CV met gewaarmerkte afskrifte van kwalifikasies en relevante dokumentasie stuur aan:

Die Menslike Hulpbronne Departement
E-pos: vacancies@nmh.com.na. Skryf asseblief "NUUSREDAKTEUR - Paterson Graad: D1" in die onderwerpreël. Vir verdere besonderhede oor posvereistes en bekwaamhede besoek <http://nmh.com.na/vacancies>

Slegs kandidate op die kortlys sal gekontak word.

Geen dokumente sal teruggestuur word nie.

Covid-19-inenting word vereis. Die mees geskikte kandidaat sal aangestel word.

SLUITINGSDATUM: 20 OKTOBER 2022
ONDERHOUDE: 25 OKTOBER 2022



VACANCIES



SENIOR ACCOUNTANT - NAMIBIA

PERMANENT POSITION BASED IN SWAKOPMUND

CORE RESPONSIBILITIES

- Perform tax validation on invoices
- Submit bank instruction form to banks / FSSC for processing
- Engage with FSSC regarding the following transactions: one time vendor payments, early payments, blocked invoices, blocked payments and reversal AP payments
- Obtain and ensure completion of customer credit application documents and submit for approval
- Inform Business Manager / customer of the credit application result
- Manage the submission of bank statements to FSSC where required
- Liaise with banks on any queries
- Manage petty cash process
- Prepare manual journal vouchers
- Assist with income statement and balance sheet preparation
- Review recons and engage with FSSC to communicate any queries
- Analyse fixed costs against budget per cost centre
- Ensure that invoices are submitted to customers in time
- Ensure the invoice contains the customer's order and reference attached
- Liaise with customers and document controllers to resolve any queries
- Prepare, coordinate external / internal audit requirements and assist with addressing audit queries
- Prepare monthly reports as required
- Perform tax calculations and submit for approval
- Submission of all tax returns and documentation
- Ensure compliance to all legislation in relation to accounting matters

QUALIFICATIONS, EXPERIENCE AND SKILLS REQUIREMENTS

The incumbent should have the following:

- BCom Financial Accounting or equivalent qualification, or
- CA / CIMA/ ACCA or equivalent qualification
- 3-5 years relevant financial experience
- SAP knowledge
- Intermediate MS Office skills
- English and Afrikaans Proficiency

AECI Namibia offers a competitive remuneration package with benefits associated with an established commercial explosives supplier.

Only candidates who meet the above requirements need apply enclosing a current curriculum vitae and certified copies of certificates to:

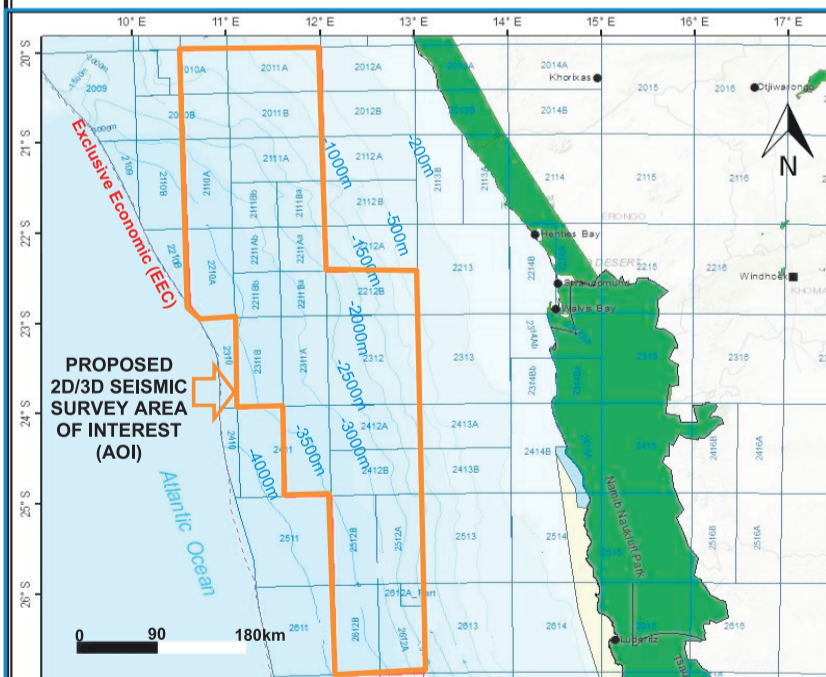
Kago.Mmolawa@aeciworld.com &
Christel.Stergiadis@aeciworld.com
Closing Date: 20 October 2022

NB: Only short listed candidates will be responded to.



PUBLIC NOTICE FOR APPLICATION FOR ENVIRONMENTAL CLEARANCE CERTIFICATE (ECC)

TGS Geophysical Company (UK) Limited (the Proponent) Proposed Multiclient 2/3D Seismic Survey Area of Interest (AOI) Over Blocks, 2010A, 2011A, 2010B, 2011B, 2111A, 2110A, 2111Bb, 2111Ba, 2210A, 2211Ab, 2211Aa, 2211Bb, 2211Ba, 2212B, 2311B, 2311A, 2312, 2411, 2412A, 2412B, 2512B, 2512A, 2612B, 2612A_Part, 2612A, 2612B, and 2612A Walvis and Lüderitz Basins Offshore Namibia



TGS Geophysical Company (UK) Limited (PROONENT) is proposing to conduct Multiclient (MC) 2D/3D Seismic Survey over the Area of Interest (AOI) covering Blocks 2010A, 2011A, 2010B, 2011B, 2111A, 2110A, 2111Bb, 2111Ba, 2210A, 2211Ab, 2211Aa, 2211Bb, 2211Ba, 2212B, 2311B, 2311A, 2312, 2411, 2412A, 2412B, 2512B, 2512A, 2612B, 2612A_Part, 2612A, 2612B, and 2612A Walvis and Lüderitz Basins Offshore Namibia with water depth of ~1000m to 4000m. The overall aim of the proposed MC 2D/3D seismic surveys is to map the subsurface of the key selected areas within the outlined AOI. Although offshore seismic surveys operations in Namibia began as far back as 1968, a lot more still need to be done to have a full understanding of the subsurface and petroleum systems of the deep-water offshore Namibia. The datasets from the proposed MC 3D/2D seismic surveys will provide critical insight into the regional and local subsurface geological evolution, deep-water offshore basin architecture, depositional, structural history and delineate potential drill-ready subsurface potential reservoirs likely to be situated kilometres below the seafloor. Seismic survey data sets to be generated is not only used for petroleum exploration but also highly useful for other marine / seafloor related studies and researches such as Deep-Sea Minerals (DSM) exploration and production and the search for natural suitable Carbon Capture and Storage (CCS) terrains as one of the possible options for Climate Change long-term global mitigation strategies.

Seismic survey data sets reduce the risk of drilling multiple dry wells, improve the chances for commercial discovery and reduces the environmental impacts of drilling more wells in the search for oil and gas. In offshore environment, the vessel towed airguns (energy source) release compressed air to generate seismic acoustic signals / waves at regular intervals. The controlled generated acoustic waves that travel deep into the earth is reflected by various rock formations of the subsurface below the seafloor, and returns to the surface where it is recorded and measured by receiving devices called hydrophones. By analysing the travel times of seismic waves through the various subsurface rock layers and the surface, geophysicists, geologists, and petroleum engineers use sophisticated software to create subsurface images / maps showing potential drill-ready subsurface geological structures called reservoirs that may contain potential commercial hydrocarbons resources. 2D seismic survey is a regional mapping / imaging methodology aimed at de-risking an exploration project by establishing a validated Sedimentary Basin Scale Model of an exploration Area of Interest. 3D Seismic survey on the other hand, is a detailed local mapping / imaging methodology aimed at de-risking an exploration project by establishing a local validated Prospect/s or Lead/s Scale Models of an exploration Area of Interest within a Sedimentary Basin. 3D and 2D Seismic Surveys are acquired on local to subregional dense and regional widely spaced survey grids / spacings, respectively.

The proposed multiclient 3D/2D seismic survey will be conducted using a MARPOL / Namibian Maritimes Laws compliant vessels and will adopt international best practices such as seasonality and survey implementation timing, establishment of buffer zones, use of Marine Mammal Observers (MMOs) & Fisheries Liaison Officers (FLOs), use of Passive Acoustic Monitoring (PAM) technology, soft starts' and 'pre-firing' observations, termination of firing in the 500m exclusion zone and use of turtle friendly tail buoys. The proposed 3D/2D seismic survey activities cannot be undertaken without an Environmental Clearance Certificate (ECC) as required by the Environmental Management Act, 2007, (Act No. 7 of 2007) and the Environmental Impact Assessment (EIA) Regulations 30 of 2012. In fulfilment of the environmental requirements, the Proponent has appointed Risk-Based Solutions (RBS) CC as the Environmental Consultant, led by Dr Sindila Mwiya and supported by Ms Emerita Ashipala and Mr Samison Mulonga as the Environmental Assessment Practitioners (EAPs) to prepare EIA and Environmental Management Plan (EMP) Reports to support the application for ECC. All Interested and Affected Parties (I&APs) are hereby invited to register and submit written comments / objections / inputs with respect to the proposed multiclient 3D/2D seismic surveys covering the deep-water Walvis and Lüderitz Basins, offshore Namibia. A Background Information Document (BID) and Project Reports are available for comments upon registration as a stakeholder / Interested and / Affected Party (I&AP). Note: In terms of the provisions of the EIA Regulation 23 (1), interested and / or affected party is required to disclose any direct business, financial, personal, or other interest which that party may have in the approval or refusal of the application.

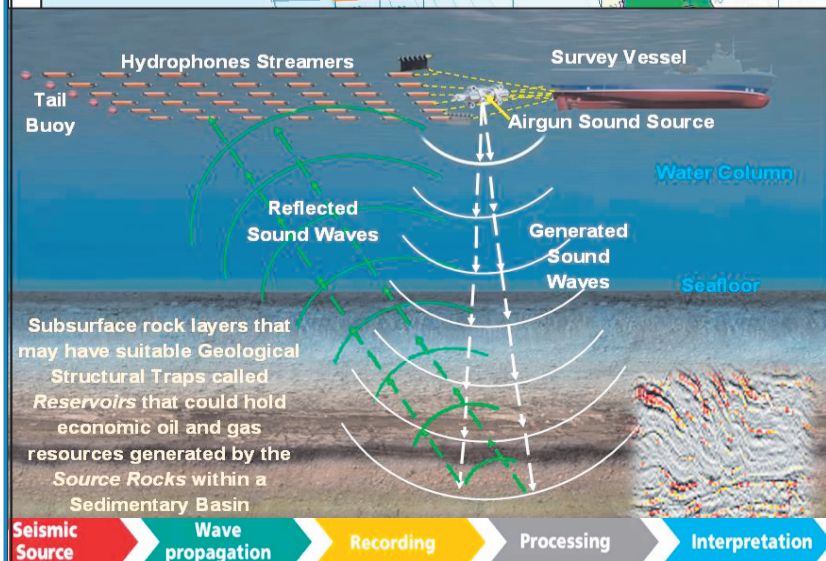
REGISTER BY EMAIL WITH: Ms Emerita Ashipala (EAP/ Risk-Based Solutions (RBS) Independent Senior Technical Consultant), Email: emerita.ashipala@gmail.com or Mr Samison Mulonga (EAP/ Risk-Based Solutions (RBS) Independent Senior Technical Consultant), Email: mulongas@gmail.com. For more technical clarifications on marine seismic survey and oil and gas exploration please contact Dr Sindila Mwiya EAP/Technical Permitting Advisor / International Resources Consultant, Email: frontdesk@rbs.com.na

REGISTRATION & WRITTEN SUBMISSIONS DEADLINE IS: FRIDAY, 28th OCTOBER 2022
A PUBLIC MEETING HAS BEEN ORGANISED IN SWAKOPMUND AS FOLLOWS:
DATE: Thursday 20th October 2022, PLACE: Namib Primary School Hall, TIME: From 14hrs00-17hrs00

Risk-Based Solutions (RBS) CC (URL: www.rbs.com.na)



Your Technical Specialist Consultants, Permitting & De-Risking Advisors in Natural Resources covering Petroleum Exploration & Production/ Minerals Exploration & Mining / Energy / Water / Environmental Assessments & Management (ESG, SEA, EIA, EMP, EMS)
Find Us @ 10 Schützen Street, Erf No. 7382, Siveda House-Home of RBS, Tel: +264-61-306058 / 224780 / 236598



NUUSREDAKTEUR

Paterson Graad: D1

NMH, 'n gelyke geleentheid werkgewer, het die volgende vakature vir 'n dinamiese en energieke persoon met Namibiese burgerskap.

Sluutprestasieareas

- Bereik teikens wat vir daaglikse aanlyn nuusdekking gestel is
- Bereik teikens wat vir daaglikse video inhoud gestel is
- Bereik teikens wat vir infografika gestel is
- Voldoen aan teikens wat vir algehele produksie gestel is
- Bestuur bydraes vir aanlynprogramme
- Hou toesig oor die bestuur van en monitor aanlyn kommentaar
- Bestuur inhoud van die gedrukte uitgawe
- Skep 'n omvattende nuusdagboek en ken stories aan verslaggewers toe deur met ander koerante en aanlynpublikasies te koördineer
- Bly op hoogte van nasionale en belangrike internasionale nuus
- Koördineer nuusinsameling
- Identifiseer en ontwikkel nuusberigte en -temas
- Gee opdragte aan verslaggewers en ontleed waar nodig

Kandidate op die kortlys moet 'n aanbieding van 20 minute voorberei oor hoe hulle van plan is om die sluitprestasieareas hierbo gelys te bereik wat hulle tydens die onderhoud moet aanbied.

Belangstellende kandidate wat vir hierdie pos kwalifiseer, kan hul CV met gewaarmerkte afskrifte van kwalifikasies en relevante dokumentasie stuur aan:

Die Menslike Hulpbronne Departement
E-pos: vacancies@nmh.com.na. Skryf asseblief "NUUSREDAKTEUR - Paterson Graad: D1" in die onderwerpreël. Vir verdere besonderhede oor posvereistes en bekwaamhede besoek <http://nmh.com.na/vacancies>

Slegs kandidate op die kortlys sal gekontak word.

Geen dokumente sal teruggestuur word nie.

Covid-19-inenting word vereis. Die mees geskikte kandidaat sal aangestel word.

SLUITINGSDATUM: 20 OKTOBER 2022
ONDERHOUDE: 25 OKTOBER 2022



VACANCIES



SENIOR ACCOUNTANT - NAMIBIA

PERMANENT POSITION BASED IN SWAKOPMUND

CORE RESPONSIBILITIES

- Perform tax validation on invoices
- Submit bank instruction form to banks / FSSC for processing
- Engage with FSSC regarding the following transactions: one time vendor payments, early payments, blocked invoices, blocked payments and reversal AP payments
- Obtain and ensure completion of customer credit application documents and submit for approval
- Inform Business Manager / customer of the credit application result
- Manage the submission of bank statements to FSSC where required
- Liaise with banks on any queries
- Manage petty cash process
- Prepare manual journal vouchers
- Assist with income statement and balance sheet preparation
- Review recons and engage with FSSC to communicate any queries
- Analyse fixed costs against budget per cost centre
- Ensure that invoices are submitted to customers in time
- Ensure the invoice contains the customer's order and reference attached
- Liaise with customers and document controllers to resolve any queries
- Prepare, coordinate external / internal audit requirements and assist with addressing audit queries
- Prepare monthly reports as required
- Perform tax calculations and submit for approval
- Submission of all tax returns and documentation
- Ensure compliance to all legislation in relation to accounting matters

QUALIFICATIONS, EXPERIENCE AND SKILLS REQUIREMENTS

The incumbent should have the following:

- BCom Financial Accounting or equivalent qualification, or
- CA / CIMA/ ACCA or equivalent qualification
- 3-5 years relevant financial experience
- SAP knowledge
- Intermediate MS Office skills
- English and Afrikaans Proficiency

AECI Namibia offers a competitive remuneration package with benefits associated with an established commercial explosives supplier.

Only candidates who meet the above requirements need apply enclosing a current curriculum vitae and certified copies of certificates to:

Kago.Mmolawa@aeciworld.com &

Christel.Stergiadis@aeciworld.com

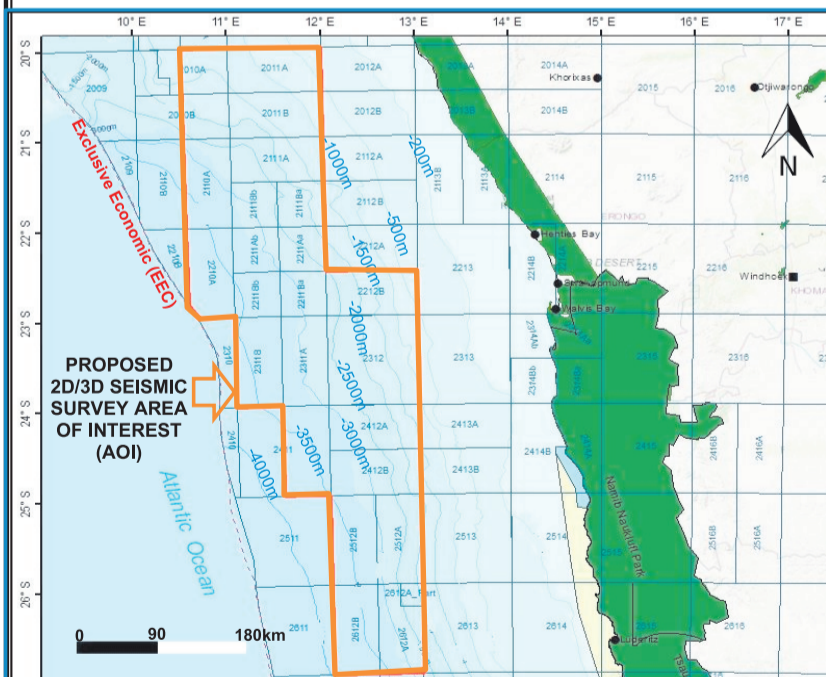
Closing Date: 20 October 2022

NB: Only short listed candidates will be responded to.



PUBLIC NOTICE FOR APPLICATION FOR ENVIRONMENTAL CLEARANCE CERTIFICATE (ECC)

TGS Geophysical Company (UK) Limited (the Proponent) Proposed Multiclient 2/3D Seismic Survey Area of Interest (AOI) Over Blocks, 2010A, 2011A, 2010B, 2011B, 2111A, 2110A, 2111Bb, 2111Ba, 2210A, 2211Ab, 2211Aa, 2211Bb, 2211Ba, 2212B, 2311B, 2311A, 2312, 2411, 2412A, 2412B, 2512B, 2512A, 2612B, 2612A_Part, 2612A, 2612B, and 2612A Walvis and Lüderitz Basins Offshore Namibia



TGS Geophysical Company (UK) Limited (PROPONENT) is proposing to conduct Multiclient (MC) 2D/3D Seismic Survey over the Area of Interest (AOI) covering Blocks 2010A, 2011A, 2010B, 2011B, 2111A, 2110A, 2111Bb, 2111Ba, 2210A, 2211Ab, 2211Aa, 2211Bb, 2211Ba, 2212B, 2311B, 2311A, 2312, 2411, 2412A, 2412B, 2512B, 2512A, 2612B, 2612A_Part, 2612A, 2612B, and 2612A Walvis and Lüderitz Basins Offshore Namibia with water depth of ~1000m to 4000m. The overall aim of the proposed MC 2D/3D seismic surveys is to map the subsurface of the key selected areas within the outlined AOI. Although offshore seismic surveys operations in Namibia began as far back as 1968, a lot more still need to be done to have a full understanding of the subsurface and petroleum systems of the deep-water offshore Namibia. The datasets from the proposed MC 3D/2D seismic surveys will provide critical insight into the regional and local subsurface geological evolution, deep-water offshore basin architecture, depositional, structural history and delineate potential drill-ready subsurface potential reservoirs likely to be situated kilometres below the seafloor. Seismic survey data sets to be generated is not only used for petroleum exploration but also highly useful for other marine / seafloor related studies and researches such as Deep-Sea Minerals (DSM) exploration and production and the search for natural suitable Carbon Capture and Storage (CCS) terrains as one of the possible options for Climate Change long-term global mitigation strategies.

Seismic survey data sets reduce the risk of drilling multiple dry wells, improve the chances for commercial discovery and reduces the environmental impacts of drilling more wells in the search for oil and gas. In offshore environment, the vessel towed airguns (energy source) release compressed air to generate seismic acoustic signals / waves at regular intervals. The controlled generated acoustic waves that travel deep into the earth is reflected by various rock formations of the subsurface below the seafloor, and returns to the surface where it is recorded and measured by receiving devices called hydrophones. By analysing the travel times of seismic waves through the various subsurface rock layers and the surface, geophysicists, geologists, and petroleum engineers use sophisticated software to create subsurface images / maps showing potential drill-ready subsurface geological structures called reservoirs that may contain potential commercial hydrocarbons resources. 2D seismic survey is a regional mapping / imaging methodology aimed at de-risking an exploration project by establishing a validated Sedimentary Basin Scale Model of an exploration Area of Interest. 3D Seismic survey on the other hand, is a detailed local mapping / imaging methodology aimed at de-risking an exploration project by establishing a local validated Prospect/s or Lead/s Scale Models of an exploration Area of Interest within a Sedimentary Basin. 3D and 2D Seismic Surveys are acquired on local to subregional dense and regional widely spaced survey grids / spacings, respectively.

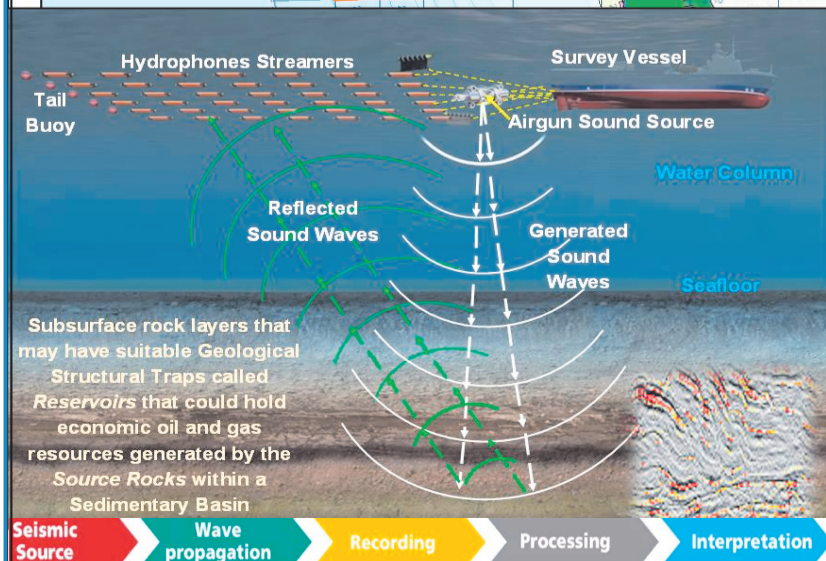
The proposed multiclient 3D/2D seismic survey will be conducted using a MARPOL / Namibian Maritimes Laws compliant vessels and will adopt international best practices such as seasonality and survey implementation timing, establishment of buffer zones, use of Marine Mammal Observers (MMOs) & Fisheries Liaison Officers (FLOs), use of Passive Acoustic Monitoring (PAM) technology, soft starts' and 'pre-firing' observations, termination of firing in the 500m exclusion zone and use of turtle friendly tail buoys. The proposed 3D/2D seismic survey activities cannot be undertaken without an Environmental Clearance Certificate (ECC) as required by the Environmental Management Act, 2007, (Act No. 7 of 2007) and the Environmental Impact Assessment (EIA) Regulations 30 of 2012. In fulfilment of the environmental requirements, the Proponent has appointed Risk-Based Solutions (RBS) CC as the Environmental Consultant, led by Dr Sindila Mwiya and supported by Ms Emerita Ashipala and Mr Samison Mulonga as the Environmental Assessment Practitioners (EAPs) to prepare EIA and Environmental Management Plan (EMP) Reports to support the application for ECC. All Interested and Affected Parties (I&APs) are hereby invited to register and submit written comments / objections / inputs with respect to the proposed multiclient 3D/2D seismic surveys covering the deep-water Walvis and Lüderitz Basins, offshore Namibia. A Background Information Document (BID) and Project Reports are available for comments upon registration as a stakeholder / Interested and / Affected Party (I&AP). Note: In terms of the provisions of the EIA Regulation 23 (1), interested and / or affected party is required to disclose any direct business, financial, personal, or other interest which that party may have in the approval or refusal of the application.

REGISTER BY EMAIL WITH: Ms Emerita Ashipala (EAP/ Risk-Based Solutions (RBS) Independent Senior Technical Consultant), Email: emerita.ashipala@gmail.com or Mr Samison Mulonga (EAP/ Risk-Based Solutions (RBS) Independent Senior Technical Consultant), Email: mulongas@gmail.com. For more technical clarifications on marine seismic survey and oil and gas exploration please contact Dr Sindila Mwiya EAP/Technical Permitting Advisor / International Resources Consultant, Email: frontdesk@rbs.com.na

REGISTRATION & WRITTEN SUBMISSIONS DEADLINE IS: FRIDAY, 28th OCTOBER 2022
A PUBLIC MEETING HAS BEEN ORGANISED IN SWAKOPMUND AS FOLLOWS:
DATE: Thursday 20th October 2022, PLACE: Namib Primary School Hall, TIME: From 14hrs00-17hrs00

Risk-Based Solutions (RBS) CC (URL: www.rbs.com.na)

Your Technical Specialist Consultants, Permitting & De-Risking Advisors in Natural Resources covering Petroleum Exploration & Production/ Minerals Exploration & Mining / Energy / Water / Environmental Assessments & Management (ESG, SEA, EIA, EMP, EMS)
Find Us @ 10 Schützen Street, Erf No. 7382, Siveda House-Home of RBS, Tel: +264-61-306058 / 224780 / 236598



NUUSREDAKTEUR

Paterson Graad: D1

NMH, 'n gelyke geleentheid werkgewer, het die volgende vakature vir 'n dinamiese en energieke persoon met Namibiese burgerskap.

Sluutprestasieareas

- Bereik teikens wat vir daaglikse aanlyn nuusdekking gestel is
- Bereik teikens wat vir daaglikse video inhoud gestel is
- Bereik teikens wat vir infografika gestel is
- Voldoen aan teikens wat vir algehele produksie gestel is
- Bestuur bydraes vir aanlynprogramme
- Hou toesig oor die bestuur van en monitor aanlyn kommentaar
- Bestuur inhoud van die gedrukte uitgawe
- Skep 'n omvattende nuusdagboek en ken stories aan verslaggewers toe deur met ander koerante en aanlynpublikasies te koördineer
- Bly op hoogte van nasionale en belangrike internasionale nuus
- Koördineer nuusinsameling
- Identifiseer en ontwikkel nuusberigte en -temas
- Gee opdragte aan verslaggewers en ontleed waar nodig

Kandidate op die kortlys moet 'n aanbieding van 20 minute voorberei oor hoe hulle van plan is om die sluitprestasieareas hierbo gelys te bereik wat hulle tydens die onderhoud moet aanbied.

Belangstellende kandidate wat vir hierdie pos kwalifiseer, kan hul CV met gewaarmerkte afskrifte van kwalifikasies en relevante dokumentasie stuur aan:

Die Menslike Hulpbronne Departement

E-pos: vacancies@nmh.com.na. Skryf asseblief "NUUSREDAKTEUR - Paterson Graad: D1" in die onderwerpreël. Vir verdere besonderhede oor posvereistes en bekwaamhede besoek <http://nmh.com.na/vacancies>

Slegs kandidate op die kortlys sal gekontak word.

Geen dokumente sal teruggestuur word nie.

Covid-19-inenting word vereis. Die mees geskikte kandidaat sal aangestel word.

SLUITINGSDATUM: 20 OKTOBER 2022
ONDERHOUDE: 25 OKTOBER 2022

NMH NAMIBIA
MEDIA
HOLDINGS

VACANCIES

AECI
MINING

SENIOR ACCOUNTANT - NAMIBIA

PERMANENT POSITION BASED IN SWAKOPMUND

CORE RESPONSIBILITIES

- Perform tax validation on invoices
- Submit bank instruction form to banks / FSSC for processing
- Engage with FSSC regarding the following transactions: one time vendor payments, early payments, blocked invoices, blocked payments and reversal AP payments
- Obtain and ensure completion of customer credit application documents and submit for approval
- Inform Business Manager / customer of the credit application result
- Manage the submission of bank statements to FSSC where required
- Liaise with banks on any queries
- Manage petty cash process
- Prepare manual journal vouchers
- Assist with income statement and balance sheet preparation
- Review recons and engage with FSSC to communicate any queries
- Analyse fixed costs against budget per cost centre
- Ensure that invoices are submitted to customers in time
- Ensure the invoice contains the customer's order and reference attached
- Liaise with customers and document controllers to resolve any queries
- Prepare, coordinate external / internal audit requirements and assist with addressing audit queries
- Prepare monthly reports as required
- Perform tax calculations and submit for approval
- Submission of all tax returns and documentation
- Ensure compliance to all legislation in relation to accounting matters

QUALIFICATIONS, EXPERIENCE AND SKILLS REQUIREMENTS

The incumbent should have the following:

- BCom Financial Accounting or equivalent qualification, or
- CA / CIMA/ ACCA or equivalent qualification
- 3-5 years relevant financial experience
- SAP knowledge
- Intermediate MS Office skills
- English and Afrikaans Proficiency

AECI Namibia offers a competitive remuneration package with benefits associated with an established commercial explosives supplier.

Only candidates who meet the above requirements need apply enclosing a current curriculum vitae and certified copies of certificates to:

Kago.Mmolawa@aeciworld.com &

Christel.Stergiadis@aeciworld.com

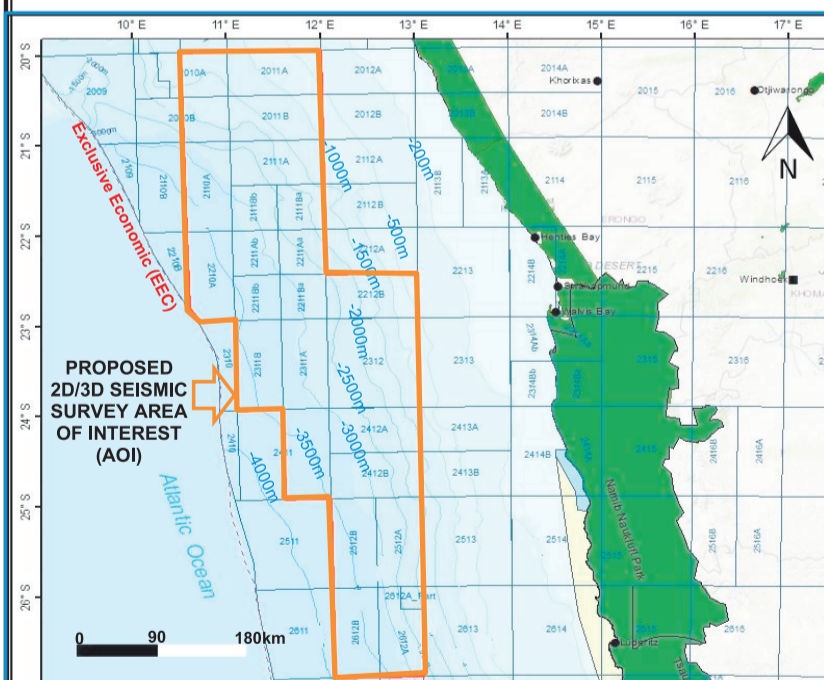
Closing Date: 20 October 2022

NB: Only short listed candidates will be responded to.



PUBLIC NOTICE FOR APPLICATION FOR ENVIRONMENTAL CLEARANCE CERTIFICATE (ECC)

TGS Geophysical Company (UK) Limited (the Proponent) Proposed Multiclient 2/3D Seismic Survey Area of Interest (AOI) Over Blocks, 2010A, 2011A, 2010B, 2011B, 2111A, 2110A, 2111Bb, 2111Ba, 2210A, 2211Ab, 2211Aa, 2211Bb, 2211Ba, 2212B, 2311B, 2311A, 2312, 2411, 2412A, 2412B, 2512B, 2512A, 2612B, 2612A_Part, 2612A, 2612B, and 2612A Walvis and Lüderitz Basins Offshore Namibia



TGS Geophysical Company (UK) Limited (PROONENT) is proposing to conduct Multiclient (MC) 2D/3D Seismic Survey over the Area of Interest (AOI) covering Blocks 2010A, 2011A, 2010B, 2011B, 2111A, 2110A, 2111Bb, 2111Ba, 2210A, 2211Ab, 2211Aa, 2211Bb, 2211Ba, 2212B, 2311B, 2311A, 2312, 2411, 2412A, 2412B, 2512B, 2512A, 2612B, 2612A_Part, 2612A, 2612B, and 2612A falling within the Walvis and Lüderitz Basins, Offshore Namibia with water depth of ~1000m to 4000m. The overall aim of the proposed MC 2D/3D seismic surveys is to map the subsurface of the key selected areas within the outlined AOI. Although offshore seismic surveys operations in Namibia began as far back as 1968, a lot more still need to be done to have a full understanding of the subsurface and petroleum systems of the deep-water offshore Namibia. The datasets from the proposed MC 3D/2D seismic surveys will provide critical insight into the regional and local subsurface geological evolution, deep-water offshore basin architecture, depositional, structural history and delineate potential drill-ready subsurface potential reservoirs likely to be situated kilometres below the seafloor. Seismic survey data sets to be generated is not only used for petroleum exploration but also highly useful for other marine / seafloor related studies and researches such as Deep-Sea Minerals (DSM) exploration and production and the search for natural suitable Carbon Capture and Storage (CCS) terrains as one of the possible options for Climate Change long-term global mitigation strategies.

Seismic survey data sets reduce the risk of drilling multiple dry wells, improve the chances for commercial discovery and reduces the environmental impacts of drilling more wells in the search for oil and gas. In offshore environment, the vessel towed airguns (energy source) release compressed air to generate seismic acoustic signals / waves at regular intervals. The controlled generated acoustic waves that travel deep into the earth is reflected by various rock formations of the subsurface below the seafloor, and returns to the surface where it is recorded and measured by receiving devices called hydrophones. By analysing the travel times of seismic waves through the various subsurface rock layers and the surface, geophysicists, geologists, and petroleum engineers use sophisticated software to create subsurface images / maps showing potential drill-ready subsurface geological structures called reservoirs that may contain potential commercial hydrocarbons resources. 2D seismic survey is a regional mapping / imaging methodology aimed at de-risking an exploration project by establishing a validated Sedimentary Basin Scale Model of an exploration Area of Interest. 3D Seismic survey on the other hand, is a detailed local mapping / imaging methodology aimed at de-risking an exploration project by establishing a local validated Prospect/s or Lead/s Scale Models of an exploration Area of Interest within a Sedimentary Basin. 3D and 2D Seismic Surveys are acquired on local to subregional dense and regional widely spaced survey grids / spacings, respectively.

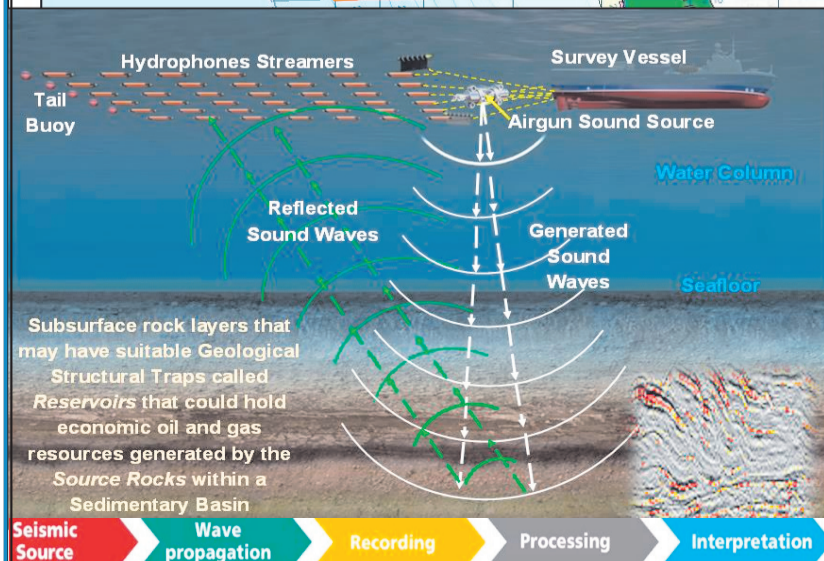
The proposed multiclient 3D/2D seismic survey will be conducted using a MARPOL / Namibian Maritimes Laws compliant vessels and will adopt international best practices such as seasonality and survey implementation timing, establishment of buffer zones, use of Marine Mammal Observers (MMOs) & Fisheries Liaison Officers (FLOs), use of Passive Acoustic Monitoring (PAM) technology, soft starts' and 'pre-firing' observations, termination of firing in the 500m exclusion zone and use of turtle friendly tail buoys. The proposed 3D/2D seismic survey activities cannot be undertaken without an Environmental Clearance Certificate (ECC) as required by the Environmental Management Act, 2007, (Act No. 7 of 2007) and the Environmental Impact Assessment (EIA) Regulations 30 of 2012. In fulfilment of the environmental requirements, the Proponent has appointed Risk-Based Solutions (RBS) CC as the Environmental Consultant, led by Dr Sindila Mwiya and supported by Ms Emerita Ashipala and Mr Samison Mulonga as the Environmental Assessment Practitioners (EAPs) to prepare EIA and Environmental Management Plan (EMP) Reports to support the application for ECC. All Interested and Affected Parties (I&APs) are hereby invited to register and submit written comments / objections / inputs with respect to the proposed multiclient 3D/2D seismic surveys covering the deep-water Walvis and Lüderitz Basins, offshore Namibia. A Background Information Document (BID) and Project Reports are available for comments upon registration as a stakeholder / Interested and / Affected Party (I&AP). Note: In terms of the provisions of the EIA Regulation 23 (1), interested and / or affected party is required to disclose any direct business, financial, personal, or other interest which that party may have in the approval or refusal of the application.

REGISTER BY EMAIL WITH: Ms Emerita Ashipala (EAP/ Risk-Based Solutions (RBS) Independent Senior Technical Consultant), Email: emerita.ashipala@gmail.com or Mr Samison Mulonga (EAP/ Risk-Based Solutions (RBS) Independent Senior Technical Consultant), Email: mulongas@gmail.com. For more technical clarifications on marine seismic survey and oil and gas exploration please contact Dr Sindila Mwiya EAP/Technical Permitting Advisor / International Resources Consultant, Email: frontdesk@rbs.com.na

REGISTRATION & WRITTEN SUBMISSIONS DEADLINE IS: FRIDAY, 28th OCTOBER 2022
A PUBLIC MEETING HAS BEEN ORGANISED IN SWAKOPMUND AS FOLLOWS:
DATE: Thursday 20th October 2022, PLACE: Namib Primary School Hall, TIME: From 14hrs00-17hrs00

Risk-Based Solutions (RBS) CC (URL: www.rbs.com.na)

Your Technical Specialist Consultants, Permitting & De-Risking Advisors in Natural Resources covering Petroleum Exploration & Production/ Minerals Exploration & Mining / Energy / Water / Environmental Assessments & Management (ESG, SEA, EIA, EMP, EMS)
Find Us @ 10 Schützen Street, Erf No. 7382, Siveda House-Home of RBS, Tel: +264-61-306058 / 224780 / 236598



NUUSREDAKTEUR

Paterson Graad: D1

NMH, 'n gelyke geleentheid werkgewer, het die volgende vakature vir 'n dinamiese en energieke persoon met Namibiese burgerskap.

Sluutprestasieareas

- Bereik teikens wat vir daaglikse aanlyn nuusdekking gestel is
- Bereik teikens wat vir daaglikse video inhoud gestel is
- Bereik teikens wat vir infografika gestel is
- Voldoen aan teikens wat vir algehele produksie gestel is
- Bestuur bydraes vir aanlynprogramme
- Hou toesig oor die bestuur van en monitor aanlyn kommentaar
- Bestuur inhoud van die gedrukte uitgawe
- Skep 'n omvattende nuusdagboek en ken stories aan verslaggewers toe deur met ander koerante en aanlynpublikasies te koördineer
- Bly op hoogte van nasionale en belangrike internasionale nuus
- Koördineer nuusinsameling
- Identifiseer en ontwikkel nuusberigte en -temas
- Gee opdragte aan verslaggewers en ontleed waar nodig

Kandidate op die kortlys moet 'n aanbieding van 20 minute voorberei oor hoe hulle van plan is om die sluitprestasieareas hierbo gelys te bereik wat hulle tydens die onderhoud moet aanbied.

Belangstellende kandidate wat vir hierdie pos kwalifiseer, kan hul CV met gewaarmerkte afskrifte van kwalifikasies en relevante dokumentasie stuur aan:

Die Menslike Hulpbronne Departement

E-pos: vacancies@nmh.com.na. Skryf asseblief "NUUSREDAKTEUR - Paterson Graad: D1" in die onderwerpreël. Vir verdere besonderhede oor posvereistes en bekwaamhede besoek <http://nmh.com.na/vacancies>

Slegs kandidate op die kortlys sal gekontak word.

Geen dokumente sal teruggestuur word nie.

Covid-19-inenting word vereis. Die mees geskikte kandidaat sal aangestel word.

SLUITINGSDATUM: 20 OKTOBER 2022
ONDERHOUDE: 25 OKTOBER 2022

NMH NAMIBIA
MEDIA
HOLDINGS

VACANCIES

AECI
MINING

SENIOR ACCOUNTANT - NAMIBIA

PERMANENT POSITION BASED IN SWAKOPMUND

CORE RESPONSIBILITIES

- Perform tax validation on invoices
- Submit bank instruction form to banks / FSSC for processing
- Engage with FSSC regarding the following transactions: one time vendor payments, early payments, blocked invoices, blocked payments and reversal AP payments
- Obtain and ensure completion of customer credit application documents and submit for approval
- Inform Business Manager / customer of the credit application result
- Manage the submission of bank statements to FSSC where required
- Liaise with banks on any queries
- Manage petty cash process
- Prepare manual journal vouchers
- Assist with income statement and balance sheet preparation
- Review recons and engage with FSSC to communicate any queries
- Analyse fixed costs against budget per cost centre
- Ensure that invoices are submitted to customers in time
- Ensure the invoice contains the customer's order and reference attached
- Liaise with customers and document controllers to resolve any queries
- Prepare, coordinate external / internal audit requirements and assist with addressing audit queries
- Prepare monthly reports as required
- Perform tax calculations and submit for approval
- Submission of all tax returns and documentation
- Ensure compliance to all legislation in relation to accounting matters

QUALIFICATIONS, EXPERIENCE AND SKILLS REQUIREMENTS

The incumbent should have the following:

- BCom Financial Accounting or equivalent qualification, or
- CA / CIMA/ ACCA or equivalent qualification
- 3-5 years relevant financial experience
- SAP knowledge
- Intermediate MS Office skills
- English and Afrikaans Proficiency

AECI Namibia offers a competitive remuneration package with benefits associated with an established commercial explosives supplier.

Only candidates who meet the above requirements need apply enclosing a current curriculum vitae and certified copies of certificates to:

Kago.Mmolawa@aeciworld.com &

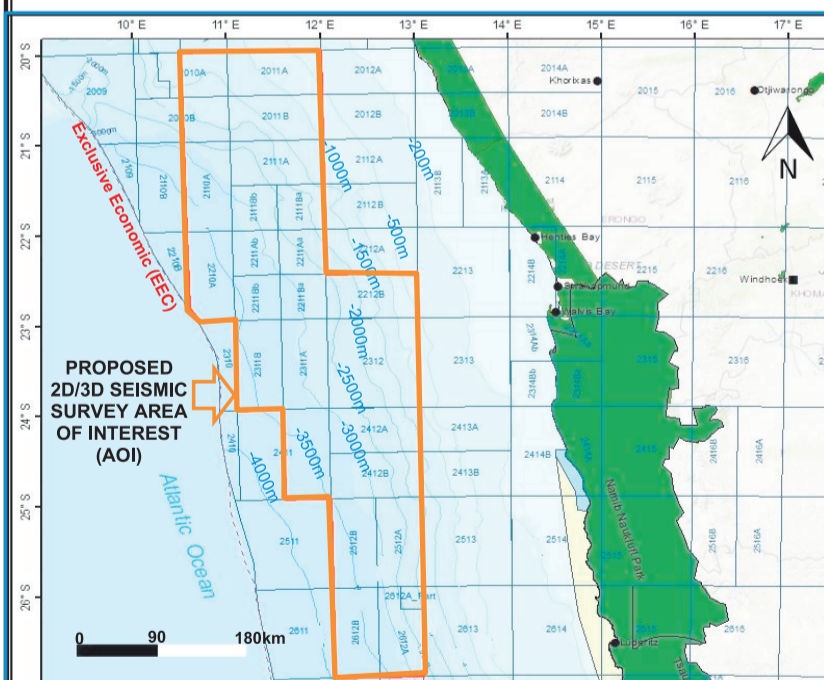
Christel.Stergiadis@aeciworld.com

Closing Date: 20 October 2022

NB: Only short listed candidates will be responded to.

**PUBLIC NOTICE FOR APPLICATION FOR ENVIRONMENTAL CLEARANCE CERTIFICATE (ECC)**

TGS Geophysical Company (UK) Limited (the Proponent) Proposed Multiclient 2/3D Seismic Survey Area of Interest (AOI) Over Blocks, 2010A, 2011A, 2010B, 2011B, 2111A, 2110A, 2111Bb, 2111Ba, 2210A, 2211Ab, 2211Aa, 2211Bb, 2211Ba, 2212B, 2311B, 2311A, 2312, 2411, 2412A, 2412B, 2512B, 2512A, 2612B, 2612A_Part, 2612A, 2612B, and 2612A Walvis and Lüderitz Basins Offshore Namibia



TGS Geophysical Company (UK) Limited (PROONENT) is proposing to conduct Multiclient (MC) 2D/3D Seismic Survey over the Area of Interest (AOI) covering Blocks 2010A, 2011A, 2010B, 2011B, 2111A, 2110A, 2111Bb, 2111Ba, 2210A, 2211Ab, 2211Aa, 2211Bb, 2211Ba, 2212B, 2311B, 2311A, 2312, 2411, 2412A, 2412B, 2512B, 2512A, 2612B, 2612A_Part, 2612A, 2612B, and 2612A Walvis and Lüderitz Basins Offshore Namibia with water depth of ~1000m to 4000m. The overall aim of the proposed MC 2D/3D seismic surveys is to map the subsurface of the key selected areas within the outlined AOI. Although offshore seismic surveys operations in Namibia began as far back as 1968, a lot more still need to be done to have a full understanding of the subsurface and petroleum systems of the deep-water offshore Namibia. The datasets from the proposed MC 3D/2D seismic surveys will provide critical insight into the regional and local subsurface geological evolution, deep-water offshore basin architecture, depositional, structural history and delineate potential drill-ready subsurface potential reservoirs likely to be situated kilometres below the seafloor. Seismic survey data sets to be generated is not only used for petroleum exploration but also highly useful for other marine / seafloor related studies and researches such as Deep-Sea Minerals (DSM) exploration and production and the search for natural suitable Carbon Capture and Storage (CCS) terrains as one of the possible options for Climate Change long-term global mitigation strategies.

Seismic survey data sets reduce the risk of drilling multiple dry wells, improve the chances for commercial discovery and reduces the environmental impacts of drilling more wells in the search for oil and gas. In offshore environment, the vessel towed airguns (energy source) release compressed air to generate seismic acoustic signals / waves at regular intervals. The controlled generated acoustic waves that travel deep into the earth is reflected by various rock formations of the subsurface below the seafloor, and returns to the surface where it is recorded and measured by receiving devices called hydrophones. By analysing the travel times of seismic waves through the various subsurface rock layers and the surface, geophysicists, geologists, and petroleum engineers use sophisticated software to create subsurface images / maps showing potential drill-ready subsurface geological structures called reservoirs that may contain potential commercial hydrocarbons resources. 2D seismic survey is a regional mapping / imaging methodology aimed at de-risking an exploration project by establishing a validated Sedimentary Basin Scale Model of an exploration Area of Interest. 3D Seismic survey on the other hand, is a detailed local mapping / imaging methodology aimed at de-risking an exploration project by establishing a local validated Prospect/s or Lead/s Scale Models of an exploration Area of Interest within a Sedimentary Basin. 3D and 2D Seismic Surveys are acquired on local to subregional dense and regional widely spaced survey grids / spacings, respectively.

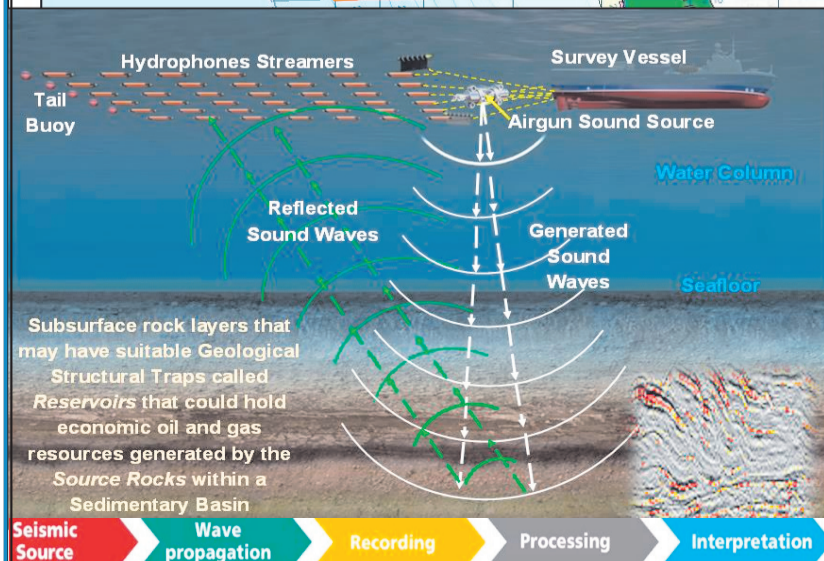
The proposed multiclient 3D/2D seismic survey will be conducted using a MARPOL / Namibian Maritimes Laws compliant vessels and will adopt international best practices such as seasonality and survey implementation timing, establishment of buffer zones, use of Marine Mammal Observers (MMOs) & Fisheries Liaison Officers (FLOs), use of Passive Acoustic Monitoring (PAM) technology, soft starts' and 'pre-firing' observations, termination of firing in the 500m exclusion zone and use of turtle friendly tail buoys. The proposed 3D/2D seismic survey activities cannot be undertaken without an Environmental Clearance Certificate (ECC) as required by the Environmental Management Act, 2007, (Act No. 7 of 2007) and the Environmental Impact Assessment (EIA) Regulations 30 of 2012. In fulfilment of the environmental requirements, the Proponent has appointed Risk-Based Solutions (RBS) CC as the Environmental Consultant, led by Dr Sindila Mwiya and supported by Ms Emerita Ashipala and Mr Samison Mulonga as the Environmental Assessment Practitioners (EAPs) to prepare EIA and Environmental Management Plan (EMP) Reports to support the application for ECC. All Interested and Affected Parties (I&APs) are hereby invited to register and submit written comments / objections / inputs with respect to the proposed multiclient 3D/2D seismic surveys covering the deep-water Walvis and Lüderitz Basins, offshore Namibia. A Background Information Document (BID) and Project Reports are available for comments upon registration as a stakeholder / Interested and / Affected Party (I&AP). Note: In terms of the provisions of the EIA Regulation 23 (1), interested and / or affected party is required to disclose any direct business, financial, personal, or other interest which that party may have in the approval or refusal of the application.

REGISTER BY EMAIL WITH: Ms Emerita Ashipala (EAP/ Risk-Based Solutions (RBS) Independent Senior Technical Consultant), Email: emerita.ashipala@gmail.com or Mr Samison Mulonga (EAP/ Risk-Based Solutions (RBS) Independent Senior Technical Consultant), Email: mulongas@gmail.com. For more technical clarifications on marine seismic survey and oil and gas exploration please contact Dr Sindila Mwiya EAP/Technical Permitting Advisor / International Resources Consultant, Email: frontdesk@rbs.com.na

REGISTRATION & WRITTEN SUBMISSIONS DEADLINE IS: FRIDAY, 28th OCTOBER 2022
A PUBLIC MEETING HAS BEEN ORGANISED IN SWAKOPMUND AS FOLLOWS:
DATE: Thursday 20th October 2022, PLACE: Namib Primary School Hall, TIME: From 14hrs00-17hrs00

Risk-Based Solutions (RBS) CC (URL: www.rbs.com.na)

Your Technical Specialist Consultants, Permitting & De-Risking Advisors in Natural Resources covering Petroleum Exploration & Production/ Minerals Exploration & Mining / Energy / Water / Environmental Assessments & Management (ESG, SEA, EIA, EMP, EMS)
Find Us @ 10 Schützen Street, Erf No. 7382, Siveda House-Home of RBS, Tel: +264-61-306058 / 224780 / 236598



It's been rough but I'm not giving up - Ewin

• BY MARTHA NANGOMBE

LOCAL model, Ewin Bailey say even though his journey has been a rough one, he is not willing to give up his dream of becoming a global model icon.



A Mechanical Engineering student at Kayec Namibia, Bailey modelling expedition will see him take to the runway in Johannesburg, South Africa from December 1 to 3 2022

“My dream is being hampered by lack of financial resources. I need money for my traveling but that is not stopping me from realising my dream. I need a sponsor to assist me financially, to only cover my transport, but also other expenses that

goes along with it,” he said. Bailey is expected to have a photo-shoot on October 28-29 as he prepares for another runway romp at the next Figure Showcase on November 12 in Johannesburg.

“Soon after that I will travel for another competition in Johannesburg South Africa and from there, I will have another event in Durban, South Africa for the Cruise between March 23 and 24 2023,” he said.

The 20- year old began modelling early this year and says he has always had a passion for modelling.

“Apart from doing Mechanical Engineering, I am also a student at Figures Model Finesse International. This is my first year at the agency and it is a whole different world. I was chosen to participate in various competitions within the agency,” he said.

Figures is one of the largest franchised modelling academies in South Africa and has over 20 franchises worldwide, including one in Namibia. The studios are fully equipped to train the students in 17 different courses. The franchises cater for various competitions which also includes meeting and performing in front of international agents and casting directors.



Ewin Bailey

PUBLIC NOTICE FOR APPLICATION FOR ENVIRONMENTAL CLEARANCE CERTIFICATE (ECC)

TGS Geophysical Company (UK) Limited (the Proponent) Proposed Multiclient 3D / 2D Seismic Survey Area of Interest (AOI) Over Blocks, 2010A, 2011A, 2010B, 2011B, 2011A, 2110A, 2111Bb, 2111Ba, 2210A, 2211Ab, 2211Aa, 2211Bb, 2211Ba, 2212B, 2311B, 2311A, 2312, 2411, 2412A, 2412B, 2512B, 2512A, 2612B, 2612A_Part, 2612A, 2612B, and 2612A Walvis and Lüderitz Basins Offshore Namibia

TGS Geophysical Company (UK) Limited (PROPOONENT) is proposing to conduct Multiclient (MC) 3D / 2D Seismic Surveys over the Area of Interest (AOI) covering Blocks 2010A, 2011A, 2010B, 2011B, 2111A, 2110A, 2111Bb, 2111Ba, 2210A, 2211Ab, 2211Aa, 2211Bb, 2211Ba, 2212B, 2311B, 2311A, 2312, 2411, 2412A, 2412B, 2512B, 2512A, 2612B, 2612A_Part, 2612A, 2612B, and 2612A Walvis and Lüderitz Basins Offshore Namibia with average water depth of ca-2000 m. The overall aim of the proposed MC 3D/2D seismic surveys is to map the subsurface of the key selected areas within the outlined AOI. Although offshore seismic surveys operations in Namibia began as far back as 1968, a lot more still need to be done to have a full understanding of the subsurface and petroleum systems of the deep-water offshore Namibia. The datasets from the proposed MC 3D/2D seismic surveys will provide critical insight into the regional and local subsurface geological evolution, deep-water offshore basin architecture, depositional, structural history and delineate potential drill-ready subsurface potential reservoirs likely to be situated kilometres below the seafloor. Seismic survey data sets to be generated is not only used for petroleum exploration but also highly useful for other marine / seafloor related studies and researches such as Deep-Sea Minerals (DSM) exploration and production and the search for natural suitable Carbon Capture and Storage (CCS) terrains as one of the possible options for Climate Change long-term global mitigation strategies.

Seismic survey data sets reduce the risk of drilling multiple dry wells, improve the chances for commercial discovery and reduces the environmental impacts of drilling more wells in the search for oil and gas. In offshore environment, the vessel towed airguns (energy source) release compressed air to generate seismic acoustic signals / waves at regular intervals. The controlled generated acoustic waves that travel deep into the earth is reflected by various rock formations of the subsurface below the seafloor, and returns to the surface where it is recorded and measured by receiving devices called hydrophones. By analysing the travel times of seismic waves through the various subsurface rock layers and the surface, geophysicists, geologists, and petroleum engineers use sophisticated software to create subsurface images /maps showing potential drill-ready subsurface geological structures called reservoirs that may contain potential commercial hydrocarbons resources. 2D seismic survey is a regional mapping / imaging methodology aimed at de-risking an exploration project by establishing a validated Sedimentary Basin Scale Model of an exploration Area of Interest. 3D Seismic survey on the other hand, is a detailed local mapping / imaging methodology aimed at de-risking an exploration project by establishing a local validated Prospect/s or Lead/s Scale Models of an exploration Area of Interest within a Sedimentary Basin. 3D and 2D Seismic Surveys are acquired on local to subregional dense and regional widely spaced survey grids / spacings, respectively.

The proposed multiclient 3D/ 2D seismic surveys will be conducted using a MARPOL / Namibian Maritimes Laws compliant vessels and will adopt international best practices such as seasonality and survey implementation timing, establishment of buffer zones, use of Marine Mammal Observers (MMOs) & Fisheries Liaison Officers (FLOs), use of Passive Acoustic Monitoring (PAM) technology, soft starts' and 'pre-firing' observations, termination of firing in the 500m exclusion zone and use of turtle friendly tail buoys. The proposed 3D/2D seismic survey activities cannot be undertaken without an Environmental Clearance Certificate (ECC) as required by the Environmental Management Act, 2007, (Act No. 7 of 2007) and the Environmental Impact Assessment (EIA) Regulations 30 of 2012. In fulfillment of the environmental requirements, the Proponent has appointed Risk-Based Solutions (RBS) CC as the Environmental Consultant, led by Dr Sindila Mwiya and supported by Ms Emerita Ashipala and Mr Samison Mulonga as the Environmental Assessment Practitioners (EAPs) to prepare EIA and Environmental Management Plan (EMP) Reports to support the application for ECC. All Interested and Affected Parties (I&APs) are hereby invited to register and submit written comments / objections / inputs with respect to the proposed multiclient 3D/2D seismic surveys covering the deep-water Walvis and Lüderitz Basins, offshore Namibia. A Background Information Document (BID) and Project Reports are available for comments upon registration as a stakeholder / Interested and / Affected Party (I&AP). Note: In terms of the provisions of the EIA Regulation 23 (1), interested and / or affected party is required to disclose any direct business, financial, personal, or other interest which that party may have in the approval or refusal of the application.

REGISTER BY EMAIL WITH: Ms Emerita Ashipala (EAP/ Risk-Based Solutions (RBS) Independent Senior Technical Consultant), Email: emerita.ashipala@gmail.com or Mr Samison Mulonga (EAP/ Risk-Based Solutions (RBS) Independent Senior Technical Consultant), Email: mulongas@gmail.com. For more technical clarifications on marine seismic survey and oil and gas exploration please contact Dr Sindila Mwiya EAP/Technical Permitting Advisor / International Resources Consultant, Email: frontdesk@rbs.com.na

REGISTRATION & WRITTEN SUBMISSIONS DEADLINE IS: FRIDAY, 28th OCTOBER 2022
Public meetings will be organised in Lüderitz and Walvis Bay / Swakopmund during the month of October 2022 depending on the public interest / number of registered stakeholders

Risk-Based Solutions (RBS) CC (URL: www.rbs.com.na)

Your Technical Specialist Consultants, Permitting & De-Risking Advisors in Natural Resources covering Petroleum Exploration & Production/ Minerals Exploration & Mining / Energy / Water / Environmental Assessments & Management (ESG, SEA, EIA, EMP, EMS)
Find Us @ 10 Schützen Street, Erf No. 7382, Siveda House-Home of RBS, Tel: +264-61-306058 / 224780 / 236598

Subsurface rock layers that may have suitable Geological Structural Traps called Reservoirs that could hold economic oil and gas resources generated by the Source Rocks within a Sedimentary Basin

Creative space for innovators and entrepreneurs

■ Paheja Siririka

The Namibia University of Science and Technology (NUST) vice-chancellor Eroid Naomab has implored the academic community to support the MTC Innovation Centre and Mobile Home, which are set to encourage rapid innovation and promote entrepreneurship.

He said this at the High-Tech Transfer Plaza Select (HTTPS) centre, where the grand opening of the MTC Innovation Centre and Mobile Home took place last week. The mobile home will be offering various MTC services, including the registration of sim cards, while the centre is a national hub for innovation designed to aid the public, academic community and industry at large to bring innovative ideas to life.

The ethos of the HTTPS concept is to improve competitiveness through trans-disciplinary research, and the transfer of specialised knowledge and technology.

Naomab stated: "We have made notable strides towards fulfilling the mandate of this ecosystem, which is to facilitate a functional, technologically-inspired space for the university, industries, development partners and entrepreneurs".

The partnerships are targeted at key areas such as professional development for staff, curriculum development, hosting of students



National hub... Namibia University of Science and Technology (NUST) vice-chancellor Eroid Naomab (left) and MTC managing director Licky Erastus (second from left) were some of the officials at last week's launch of the MTC Innovation Centre and Mobile Home at the university's High-Tech Transfer Plaza Select (HTTPS) centre. Photo: Emmency Nuukala

for work-integrated learning, and sharing of research facilities.

MTC managing director Licky Erastus said while the nation ought to celebrate

the milestone between the two institutions, industry needs to accelerate and set itself fit for the fourth industrial revolution.

"This is an innovation hub, where industry experts and academics will be appreciating and leveraging synergies to transform innovative ideas and concepts to life," he noted.

Erastus added that in the fast digital space, inclusive of both public and private sectors, innovation must be the order of business existence, intimating that a nonchalant approach to it must be discarded as it is injurious to the socio-welfare and national economic development.

Meanwhile, information minister Peya Mushelenga stated that in the long run, the perpetual search for new and better ways of doing things drives human learning and, ultimately, prosperity for all should be the aiming point.

"All things considered for technological innovations to excel – young people should be at the helm, supported by an array of interventions to grow the economy as well as to grow minds and cultivate ideas. This is especially as we recover from a catastrophic global pandemic, where we need to give expression to how the role of technology is advancing the growth of our young people, and how we as a government can contribute to this," he urged. – psiririka@nepc.com.na

Namib Mills to increase product prices

Namib Mills has announced an increase in prices on their various products with effect from 14 November 2022.

Namib Mills said in a media statement on Wednesday that the price increases are necessitated by the decline in the value of the Namibia Dollar compared to the US Dollar, shedding 17% of its value over the last couple of months.

The product range to increase includes maize meal at 13% ; instant maize porridge by 9%; and Pasta Polana and Pasta King at 3%. Wheat flour and complete mix will rise by 5%; bread at 4%; and sugar at 6.5%.

The company noted that there is a strong correlation between the maize price and the exchange rate because of maize being exported from South Africa.



Price increase... Namib Mills last week announced a price increase that will include maize meal at 13% ; instant maize porridge by 9%; and Pasta Polana and Pasta King at 3%. Wheat flour and complete mix will rise by 5%; bread at 4%; and sugar by 6.5%. Photo: Contributed

PUBLIC NOTICE FOR APPLICATION FOR ENVIRONMENTAL CLEARANCE CERTIFICATE (ECC)

TGS Geophysical Company (UK) Limited (the Proponent) Proposed Multiclient 2/3D Seismic Survey Area of Interest (AOI) Over Blocks, 2010A, 2011A, 2010B, 2011B, 2111Ba, 2111Bb, 2210A, 2211Ab, 2211Aa, 2211Bb, 2211Ba, 2212B, 2311B, 2311A, 2312, 2411, 2412A, 2412B, 2512B, 2612A, 2612B, 2612A_Part, 2612A, 2612B, and 2612A Walvis and Lüderitz Basins Offshore Namibia

TGS Geophysical Company (UK) Limited (PROONENT) is proposing to conduct Multiclient (MC) 2D/3D Seismic Survey over the Area of Interest (AOI) covering Blocks 2010A, 2011A, 2010B, 2011B, 2111A, 2110A, 2111Bb, 2111Ba, 2210A, 2211Ab, 2211Aa, 2211Bb, 2211Ba, 2212B, 2311B, 2311A, 2312, 2411, 2412A, 2412B, 2512B, 2612A, 2612B, 2612A_Part, 2612A, 2612B, and 2612A Walvis and Lüderitz Basins Offshore Namibia with water depth of -1000m to 4000m. The overall aim of the proposed MC 2D/3D seismic surveys is to map the subsurface of the key selected areas within the outlined AOI. Although offshore seismic surveys operations in Namibia began as far back as 1968, a lot more still need to be done to have a full understanding of the subsurface and petroleum systems of the deep-water offshore Namibia. The datasets from the proposed MC 3D/2D seismic surveys will provide critical insight into the regional and local subsurface geological evolution, deep-water offshore basin architecture, depositional, structural history and delineate potential drill-ready subsurface potential reservoirs likely to be situated kilometres below the seafloor. Seismic survey data sets to be generated is not only used for petroleum exploration but also highly useful for other marine / seafloor related studies and researches such as Deep-Sea Minerals (DSM) exploration and production and the search for natural suitable Carbon Capture and Storage (CCS) terrains as one of the possible options for Climate Change long-term global mitigation strategies.

Seismic survey data sets reduce the risk of drilling multiple dry wells, improve the chances for commercial discovery and reduces the environmental impacts of drilling more wells in the search for oil and gas. In offshore environment, the vessel towed airguns (energy source) release compressed air to generate seismic acoustic signals / waves at regular intervals. The controlled generated acoustic waves that travel deep into the earth is reflected by various rock formations of the subsurface below the seafloor, and returns to the surface where it is recorded and measured by receiving devices called hydrophones. By analysing the travel times of seismic waves through the various subsurface rock layers and the surface, geophysicists, geologists, and petroleum engineers use sophisticated software to create subsurface images /maps showing potential drill-ready subsurface geological structures called reservoirs that may contain potential commercial hydrocarbons resources. 2D seismic survey is a regional mapping / imaging methodology aimed at de-risking an exploration project by establishing a validated Sedimentary Basin Scale Model of an exploration Area of Interest. 3D Seismic survey on the other hand, is a detailed local mapping / imaging methodology aimed at de-risking an exploration project by establishing a local validated Prospect/s or Lead/s Scale Models of an exploration Area of Interest within a Sedimentary Basin. 3D and 2D Seismic Surveys are acquired on local to subregional dense and regional widely spaced survey grids / spacings, respectively.

The proposed multiclient 3D/2D seismic survey will be conducted using a MARPOL / Namibian Maritimes Laws compliant vessels and will adopt international best practices such as seasonality and survey implementation timing, establishment of buffer zones, use of Marine Mammal Observers (MMOs) & Fisheries Liaison Officers (FLOs), use of Passive Acoustic Monitoring (PAM) technology, soft starts' and 'pre-firing' observations, termination of firing in the 500m exclusion zone and use of turtle friendly tail buoys. The proposed 3D/2D seismic survey activities cannot be undertaken without an Environmental Clearance Certificate (ECC) as required by the Environmental Management Act, 2007, (Act No. 7 of 2007) and the Environmental Impact Assessment (EIA) Regulations 30 of 2012. In fulfillment of the environmental requirements, the Proponent has appointed Risk-Based Solutions (RBS) CC as the Environmental Consultant, led by Dr Sindila Mwiya and supported by Ms Emerita Ashipala and Mr Samison Mulonga as the Environmental Assessment Practitioners (EAPs) to prepare EIA and Environmental Management Plan (EMP) Reports to support the application for ECC. All Interested and Affected Parties (I&APs) are hereby invited to register and submit written comments / objections / inputs with respect to the proposed multiclient 3D/2D seismic surveys covering the deep-water Walvis and Lüderitz Basins, offshore Namibia. A Background Information Document (BID) and Project Reports are available for comments upon registration as a stakeholder / Interested and / Affected Party (I&AP). Note: In terms of the provisions of the EIA Regulation 23 (1), interested and / or affected party is required to disclose any direct business, financial, personal, or other interest which that party may have in the approval or refusal of the application.

REGISTER BY EMAIL WITH: Ms Emerita Ashipala (EAP/ Risk-Based Solutions (RBS) Independent Senior Technical Consultant), Email: emerita.ashipala@gmail.com or Mr Samison Mulonga (EAP/ Risk-Based Solutions (RBS) Independent Senior Technical Consultant), Email: mulongas@gmail.com. For more technical clarifications on marine seismic survey and oil and gas exploration please contact Dr Sindila Mwiya EAP/Technical Permitting Advisor / International Resources Consultant, Email: frontdesk@rbs.com.na

REGISTRATION & WRITTEN SUBMISSIONS DEADLINE IS: FRIDAY, 28th OCTOBER 2022
A PUBLIC MEETING HAS BEEN ORGANISED IN SWAKOPMUND AS FOLLOWS:
DATE: Thursday 20th October 2022, PLACE: Namib Primary School Hall, TIME: From 14hrs00-17hrs00

Risk-Based Solutions (RBS) CC (URL: www.rbs.com.na)

Your Technical Specialist Consultants, Permitting & De-Risking Advisors in Natural Resources covering Petroleum Exploration & Production/ Minerals Exploration & Mining / Energy / Water / Environmental Assessments & Management (ESG, SEA, EIA, EMP, EMS)

Find Us @ 10 Schützen Street, Erf No. 7382, Sivedia House-Home of RBS, Tel: +264-61-306058 / 224780 / 236598

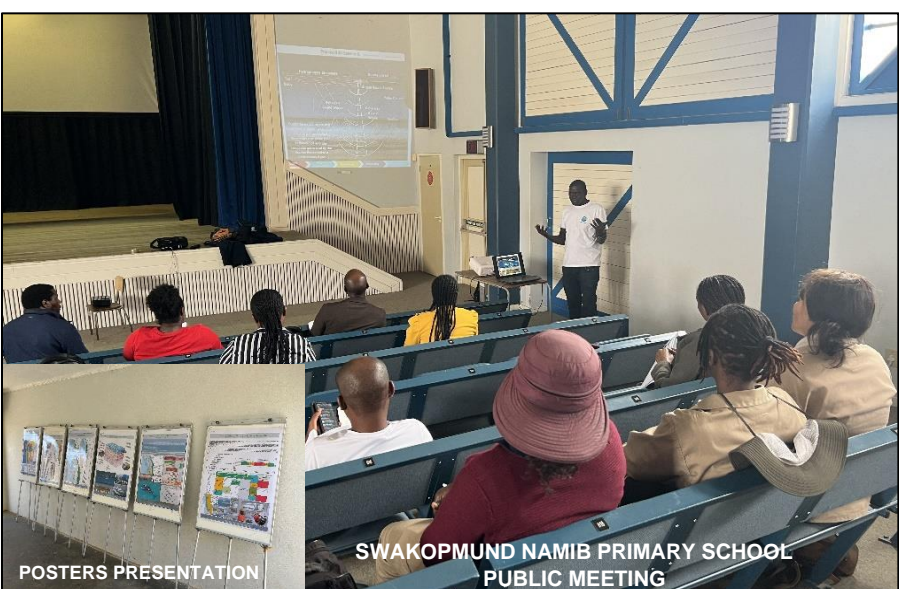
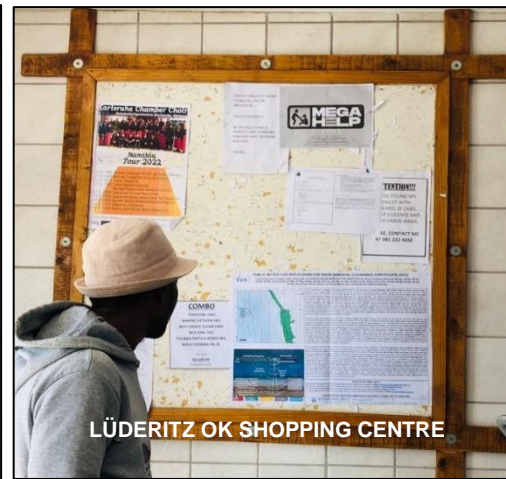
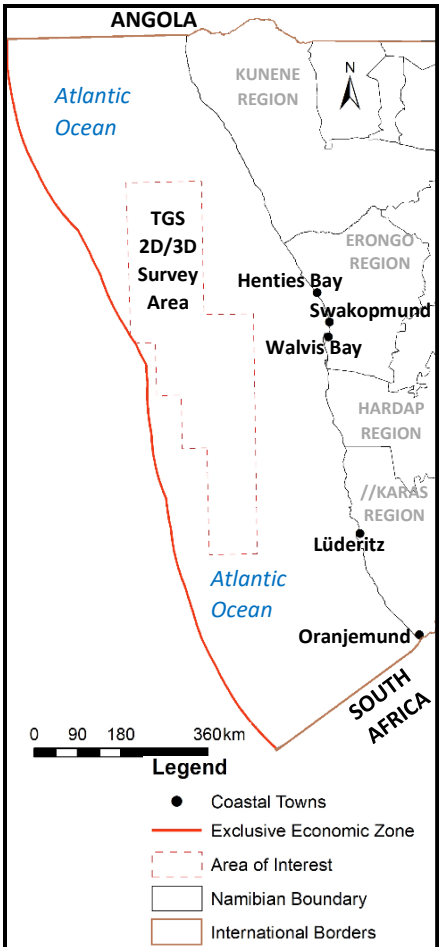
It also said the Russian conflict with Ukraine continues to disrupt both energy, food and financial markets, noting that Ukraine grows enough food to feed an estimated 400 million people worldwide. This includes 50% of the world's sunflower oil supply, 10% of the worldwide grain supply, and 13% of global maize supply.

"Due to the war, crop areas in Ukraine will either not be planted or not be harvested this year, and the supply chains from Ukraine have been disrupted because of the closure of the Black Sea ports and limited ability to transport commodities through the Western border.

These factors all continue to increase the risk of grain availability and hence pricing remains high," the statement added.

- Nampa/AFP

**PUBLIC NOTICES PLACED AT STRATEGIC PLACES IN LUDERITZ, WALVIS BAY,
SWAKOPMUND AND HENTIES BAY INCLUDING A PUBLIC MEETING HELD IN
SWAKOPMUND**





TGS GEOPHYSICAL COMPANY (UK) LIMITED CONSULTATION MEETING FOR PROPOSED MULTICLIENT 2/3D SEISMIC SURVEY IN THE AREA OF INTEREST (AOI) IN WALVIS AND LÜDERITZ BASINS OFFSHORE NAMIBIA

Date: 20 October 2022
Time: 14:00
Venue: Namib Primary School Hall, Erongo Region, Swakopmund

MEETING DETAILS	
COMMENCING TIME:	14:47
ATTENDANCE:	Appendix A
PURPOSE:	To inform stakeholders on the application for Environmental Clearance Certificate for the Proposed Multiclient 2/3D Seismic Survey Area of Interest (AOI) Over Blocks, 2010A, 2011A, 2010B, 2011B, 2111A, 2110A, 2111Bb, 2111Ba, 2210A, 2211Ab, 2211Aa, 2211Bb, 2211Ba, 2212B, 2311B, 2311A, 2312, 2411, 2412A, 2412B, 2512B, 2512A, 2612B, 2612A_Part, 2612A, 2612B, and 2612A Walvis and Lüderitz Basins Offshore Namibia by TGS Geophysical Company (UK) Limited (the Proponent).
PRESENTATION	<p><i>Presented by Dr Sindila Mwiya</i></p> <p>The following are pointers for the presentation:</p> <ul style="list-style-type: none"> - Hydrocarbons Map of Namibia Showing Tenants of Subsurface Resources - Sedimentary Basins of the World - Sedimentary Basins Namibia - Background to Petroleum (Oil and Gas) Formation and Exploration - Historical Perspective on Marine Seismic Survey in Namibia <ul style="list-style-type: none"> o Seismic survey has been undertaken offshore and onshore in Namibia since 1968. A number of wells have been drilled offshore and onshore in Namibia. - PEL, Block, AOI, Seismic Survey, Well Drilling & Oil /Gas Field - Key AOI for Proposed Offshore 2D/3D Seismic Survey - Offshore 2D/3D Seismic Survey and Compliance Requirements - Environmental Assessment Process, EMA, 2007 and EIA Regulations 2012 - Overview of Marine 3D Seismic Survey <ul style="list-style-type: none"> o Seismic, wave propagation, recording, processing, and interpretation. o Use of geophones

	<ul style="list-style-type: none"> ○ Seismic airguns generate low-frequency sound pulses below 250 Hz with the strongest energy (which is focused downwards) in the range of 10-120 Hz and peak energy between 30 to 50Hz. - Proposed 3D Seismic Survey - Living Marine Resources Receiving Environment - Fish Spawning Areas Receiving Environment - Likely Sources of Negative Marine Receiving Environment - Understanding Destructive Interference, Seismic Survey, and Earthquake Created Seismic Waves - Sensitivity of the Receiving Environment - Potential Negative Impacts Assessment - Potential Positive Impacts Assessment - Opportunity for Coexistence depending on: <ul style="list-style-type: none"> ○ Key Fishing Season (Key Species), ○ Main Spawning Activities (Key Species) ○ Key Cetaceous Presences /Migratory Times ○ Other Key Users Such as Minerals and Petroleum Operations ○ Weather Window ○ Marine Seismic Survey ○ Opportunity Window - Marine Seismic Survey Mitigation Measures - Illustration of Offshore Seismic Survey Mitigation Measures <p>The PowerPoint and Poster presentations are provided in Appendix B</p>
<p>QUESTIONS/ CONCERNS</p>	<p><u>Can potential clients know if the data presented to them is not legitimate?</u> They hire a specialist company to validate the data before it is purchased, and some companies only go for big specialist companies.</p> <p><u>What does TGS stand for?</u> I am not very sure; I will find out.</p> <p><u>How accurate is the 2D survey?</u> Not so accurate, the lines are far apart, leaving gaps in the data presented herewith reducing the confidence in the data. Normally, 3D is more accurate but more expensive.</p> <p><u>Do vessels spill oil?</u> The only fuel that can potentially spill is that which is carried/used by the vessel itself, therefore a spill can only occur in an event of a collision accident.</p>

	<p><u>Would vessels be bunkering offshore?</u> No, these activities happen seasonally and for short periods of time, this can be due to for example the weather not being appropriate, and in consideration of other key uses of the sea such as fishing seasons, etc. such that all activities can coexist.</p> <p><u>What is the deepest part the Ministry of Fisheries and Marine Resources monitors species?</u> The deepest is hake which goes up to 600m, however, monitoring can go up to 1000m, however still not overlapping with the proposed survey area.</p> <p><u>Are there any Namibian companies partnered with the multicient companies to acquire seismic data?</u> Most of the time no, the activities are very expensive only big international companies can afford them. The seismic is highly speculative and the chances of finding a company to buy the data are low.</p> <p><u>What happens if clearance is rejected?</u> It normally depends on the reason (s) for rejection. There are different stages of appealing the decision to the Environmental Commissioner. Otherwise, companies move to other locations or countries if the local environment is very sensitive for the seismic and other marine activities to coexist.</p> <p><u>Are there any jobs for the local people?</u> Not many job opportunities are available for this project; the activities are highly specialised and are normally acquired on international contracts. There are limited opportunities local Namibian to work as Marine Mammal or Fisheries Observers, etc, however, even these jobs require well trained and certified workers who can work offshore or in marine environment.</p> <p>End!</p>
<p>CLOSING REMARKS</p>	<p>The following is a summary of the key assessments that have been undertaken as part of the EIA and EMP Processes:</p> <ol style="list-style-type: none"> 1. Assessment of the fishing industry activities including fish, fishing seasons and socioeconomic associated activities found in and around the proposed survey area, and. 2. Assessment of the marine environment covering marine birds, mammals, and related ecosystem variability. 3. Underwater acoustic modelling with respect to the receiving living marine resources. <p>❖ As part of the ongoing environmental assessment process leading to the</p>

	<p>preparation of the EIA and EMP Report in support of the application for the ECC, all Interested, and Affected Parties (I&Aps) are invited to register and submit written comments/objections/inputs with respect to the proposed 2D/3D seismic survey operations on or before the Friday, 28th October 2022.</p> <ul style="list-style-type: none"> ❖ The Proponent intends to submit the application for ECC from the week Starting 31st October 2022. <p>If you have any questions, recommendations, or input, do not hesitate to reach out. All the reports will be shared with all those that registered with us.</p>
MEETING ADJOURNED	16:48

**TGS INTEGRATED STAKEHOLDER REGISTER FOR 2D/3D
SEISMIC SURVEY IN LUDERITZ AND WALVIS BASINS**

TGS Stakeholder Register for the Proposed Regional Deepwater 2D/3D Seismic Survey in the Walvis and Lüderitz Basins, Offshore Namibia

Name	Organisation	Email/Contact Details	Date
In response to the Advert			
1. Mr Andreas Sheehama	Ministry of Mines and Energy Petroleum Affairs	andreas.sheehama@mme.gov.na	Fri, Oct 14, 8:32 AM
2. David Russel	David Russel Fishing Consultancy	davelin@iway.na	Sat, Oct 15, 7:11 AM
3. Jakobina N Aukongo	Maritime Security in Namibian Navy	jacobinaii08@gmail.com	Wed, Oct 19, 9:52 AM
4. Beatha Amadhila	Maritime Security in Namibian Navy		Wed, Oct 19, 9:52 AM
5. Bruno Coetzee	Keetmanshoop community member	brunocoetzee910624@gmail.com	Tue, Oct 25, 5:21 PM
6. Dene' Kisting	Namdeb Diamond Corporation (Pty) Ltd	Julien.Vumazonke@namdeb.com	Tue, Oct 26,
7. Environmental Officer (Assessments)		Dene.Kisting@namdeb.com	Wed,9:42:00 AM
8. Kirk Bassingthwaighte	Kirk Bassingthwaighte, Mariental	kirk@bassaroot.com	Thu, Oct 27, 17:05
9. Heike Stegmann	Mariental	heike.stegmann@gmail.com	Thu, Oct 27, 2022, 5:16 PM
10. Winfred Henok	Lüderitz	wnihenok@icloud.com	Fri, Oct 28, 2022, at 10:14 AM
Consultation by Visit			
11. Kennedy Mbanga	Tunacor	kmbanga@tunacor.com	18/10/22
12. Mekondjo Johannes	Blue Sea Fishing	johannes@blueseas.com	18/10/22
13. John Kobas	Seawork	john@seawork.com.na	18/10/22
14. N. Samlowitz	Freddie Fisit	noel@freddiefishpro.com	19/10/22
15. R. Mupefami	MFMR Inspectorate	rmupefami@mfmr.gov.na	19/10/22

Name	Organisation	Email/Contact Details	Date
16. W. Buckle	Merlus Group	willem@merlus.com.na	19/10/22
17. K. Quita	Gendev Fishing	reception@gendev.com.na	19/10/22
18. B. Claassen	NovaNam	bradleyc@novanam.com.na	19/10/22
19. J. Theron	Hangana	johntheron@ol.na	19/10/22
20. R. Shanjengange	Embunda	rshan@cadilu.com	19/10/22
21. M. Munoz	Cato Fishing	mario@cato.com.na	19/10/22
22. PA. Shikoggo	D.M.A	pshikoggo@mintc.com.na	20/10/22
23. D.S. Swangpoel	Namcrab	noordburg.kakpuse@gmail.com	25/10/22
Public Meeting Attendance registry			
24. Beatha Amadhila	Nam Navy	amadhilbetty@gmail.com	20/10/22
25. Jacobina Aukonga	Nam Navy	jacobinaii08@gmail.com	20/10/22
26. Victor Libuku	MFMR	victor.libuku@mfmr.gov.na	20/10/22
27. La-Toya Shivute	MFMR	latoya.shivute@mfmr.gov.na	20/10/22
28. Petrus Niipale	Bluebox	pniipale@gmail.com	20/10/22
29. Kenny Links	Municipality	kennykatjiruru@gmail.com	20/10/22
30. Uhanika Ndjovera	Municipality	uhanikandjavera@icloud.com	20/10/22
31. Leska Blockstaan	Municipality	817788174	20/10/22
32. Magano K Nekwaya	Community Member	818639507	20/10/22
Consultation Via Email			
33. Orandjemund Town Council		info@ormdtc.com.na. ceo@ormdtc.com.na	Fri 10/14/2022 7:53 AM
34. Erongo Regional Council		farita@erongorc.gov.na; cro@erongorc.gov.na; farita@erongorc.gov.na	Fri 10/14/2022 7:53 AM
35. Ministry of Environment, Forestry and Tourism		tnghitila@yahoo.com; Teofilus.nghitila@meft.gov.na saima.angula@met.gov.na; damian.nchindo@met.gov.na	Fri 10/14/2022 7:53 AM

Name	Organisation	Email/Contact Details	Date
36. Ministry of Fisheries and Marine Resources		Anja.Kreiner@mfmr.gov.na; AnnaMarie.Amunyela@mfmr.gov.na; 'Victor.Libuku@mfmr.gov.na; ferdinand.hamukwaya@mfrm.gov.na; LaToya.Shivute@mfmr.gov.na	Fri 10/14/2022 7:53 AM
37. Lüderitz Town Council		ceo@ltc.com.na	Fri 10/14/2022 7:53 AM
38. Ministry of Mines and Energy (Department of Petroleum Affairs)		simeon.negumbo@mme.gov.na; Maggy.Shino@mme.gov.na; carlo.mcleod@mme.gov.na; andreas.sheehama@mme.gov.na; Frans.Kalenga@mme.gov.na; Louise.Hangero@mme.gov.na; Hendrina.Simon@mme.gov.na; Jonas.Amukende@mme.gov.na; Aune.Amutenya@mme.gov.na; Secilie.Hainana@mme.gov.na; Joseph.Amakali1@mme.gov.na; Petrus.Robert@mme.gov.na	Fri 10/14/2022 7:53 AM
39. Namcor		vsibeya@namcor.com.na; MNegonga@namcor.com.na; LKandowa@namcor.com.na; jmbundu@namcor.com.na; HNashilundo@namcor.com.na; leiseb@namcor.com.na; pshigwedha@namcor.com.na; ETapalo@namcor.com.na	Fri 10/14/2022 7:53 AM
40. Ministry of Works and Transport		Shapua.Kalomo@mwt.gov.na; Selma.Naanda@mwt.gov.na; Candida.Ngola@mwt.gov.na; Johannes.Muzanima@mwt.gov.na;	Fri 10/14/2022 7:53 AM

Name	Organisation	Email/Contact Details	Date
		Theo.Shipopyeni@mwt.gov.na; Joseph.Diwanga@mwt.gov.na	
41. Swakopmund Municipality		swkmun@swkmun.com.na	Fri 10/14/2022 7:53 AM
42. Walvis Bay Municipality		pr@walvisbaycc.org.na; namutenya@walvisbaycc.org.na; duushona@walvisbaycc.org.na	Fri 10/14/2022 7:53 AM
43. Karas Regional Council		jileka@karasrc.gov.na;	Fri 10/14/2022 7:53 AM
44. Kunene Regional Council		info@kunenerc.gov.na;	Fri 10/14/2022 7:53 AM
45. Other Institutions		michael.viljoen@ol.na; info.largepelagicnamibia@gmail.com; Davelin@iway.na; matthew.possessions@gmail.com; ahamulo@gmail.com; linekela@etoshafishing.com.na; maurice.h@ebhnamibia.com; rozelda.maree@ol.na; miguel.calaca@ol.na; adnaanboois09@gmail.com; Registry.Clerk@hbaymun.com.na; Council.Administrator@hbaymun.com.na'; gpkamseb@yahoo.com; gaobaebh@gmail.com; tireawises@gmail.com ecutscc@gmail.com	Fri 10/14/2022 7:53 AM