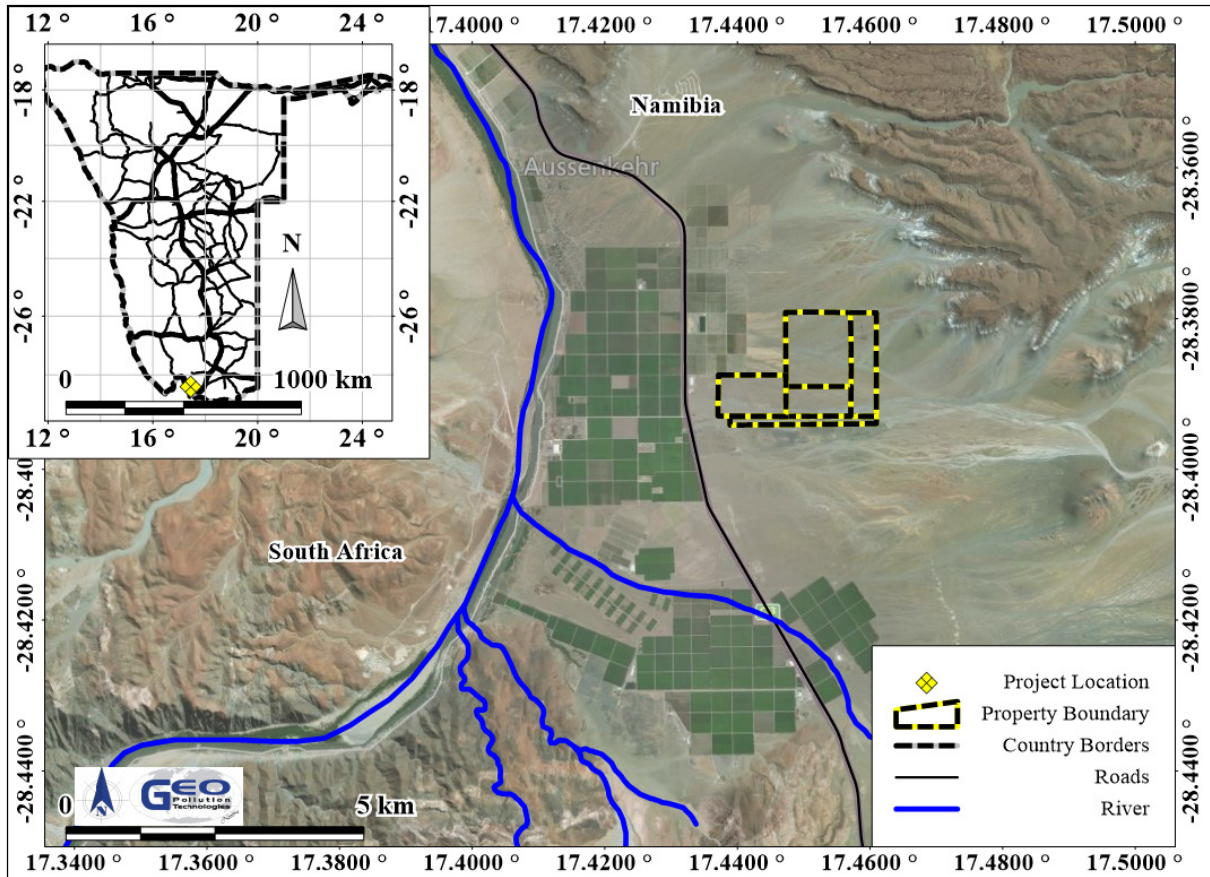


**ENVIRONMENTAL ASSESSMENT FOR KAREE INVESTMENTS 127,  
//KARAS REGION NAMIBIA**

**PROJECT LOCATION**



For any additional information regarding the project, kindly contact the project team as per the contact details below.

**Project Contact Details**

Project Team: Pierre Botha; Quzette Bosman  
Phone: +264 (0)61 257 411  
Fax: +264 886 26 368  
Email: [gpt@thenamib.com](mailto:gpt@thenamib.com)