

1.1 PROJECT LOCATION

The proponent intends to mine dimension stone as natural slates on mining claims 72740, 72741 & 72742 covering a total area of 50.080 hectares on Farm Berghoek 506 located about 10 km from the C 24 road from Bullsport to Maltahohe, in the vast rocky areas of the Naukluft Mountains in the south western part of Namibia where the mining and processing (tile cutting) takes place. Refer to the locality map of Farm Berghoek 506 in **Figure 1, Figure 2, Figure 3 & Figure 4** for the locality maps of the 3 subject sites.

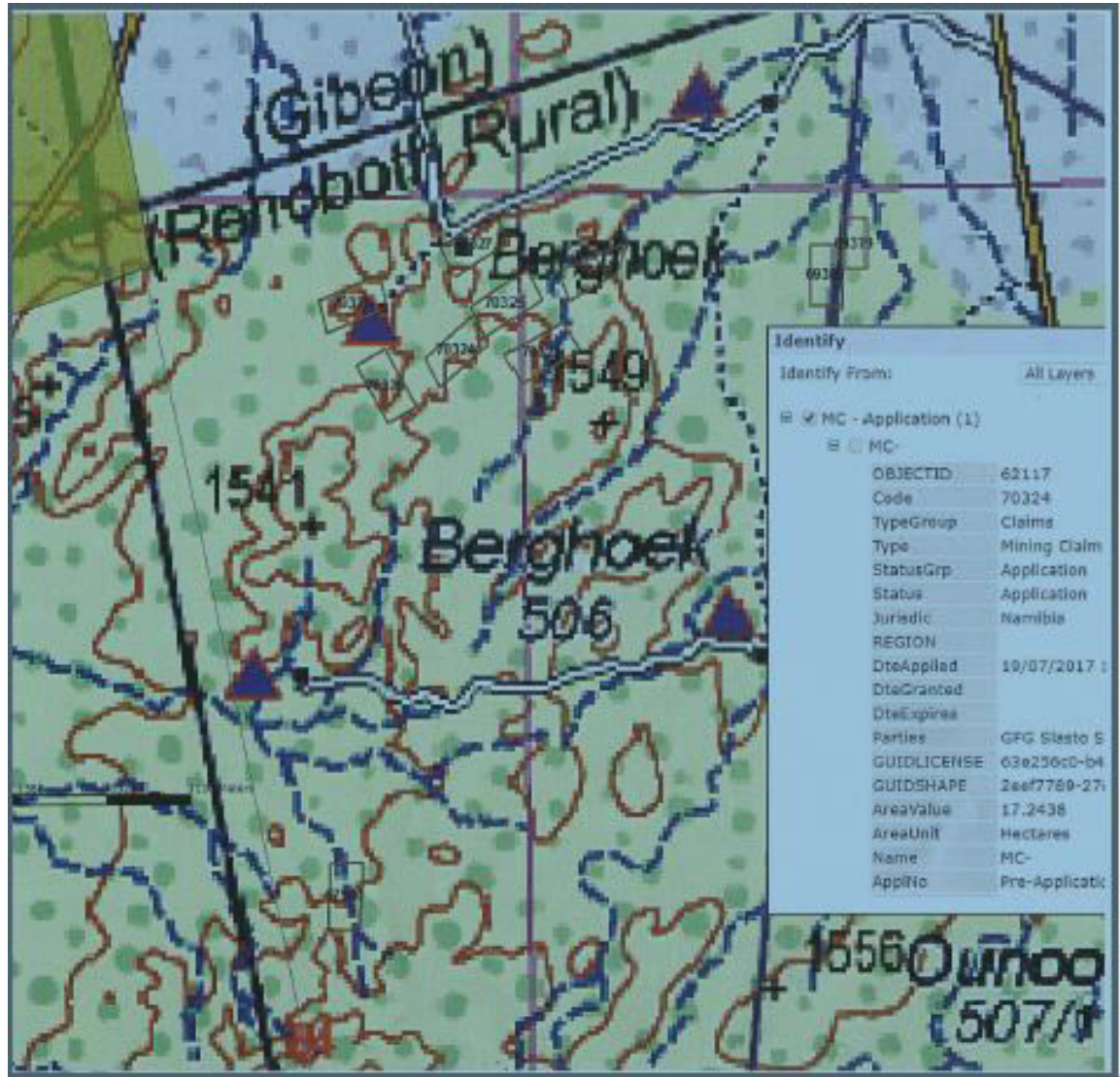


Figure 1: Locality map of showing the existing mining claims 72740 to 72742 (purple triangles) at Farm Bergshoek 506.

Project location for the dimension/slate stone mining & tile making activities, Hardap Region

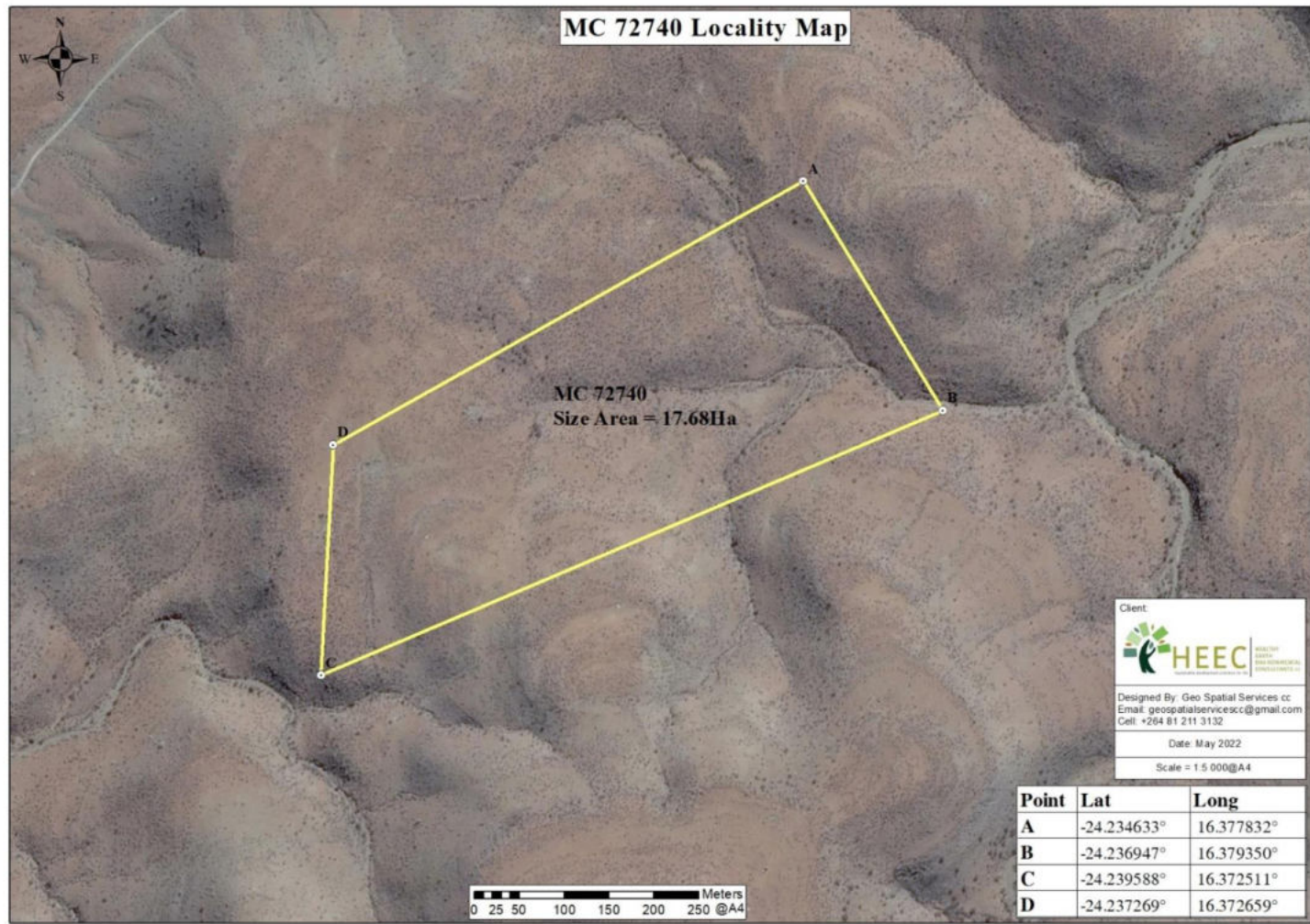


Figure 2: Mining claim 72740 at Farm Berghoek 506 (HEEC, 2022)

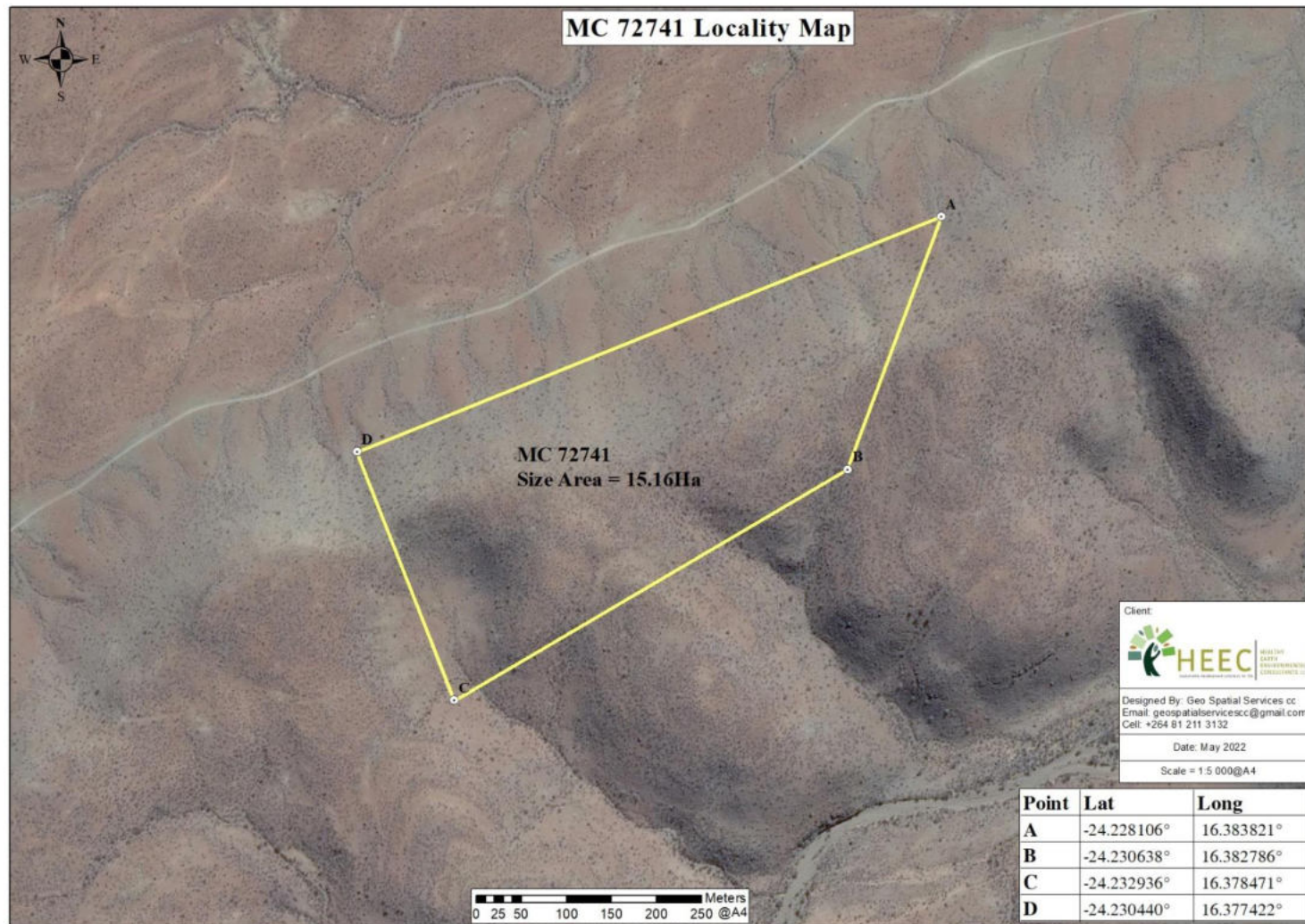


Figure 3: Mining claim 72741 at Farm Berghoek 506 (HEEC, 2022)

Project location for the dimension/slate stone mining & tile making activities, Hardap Region

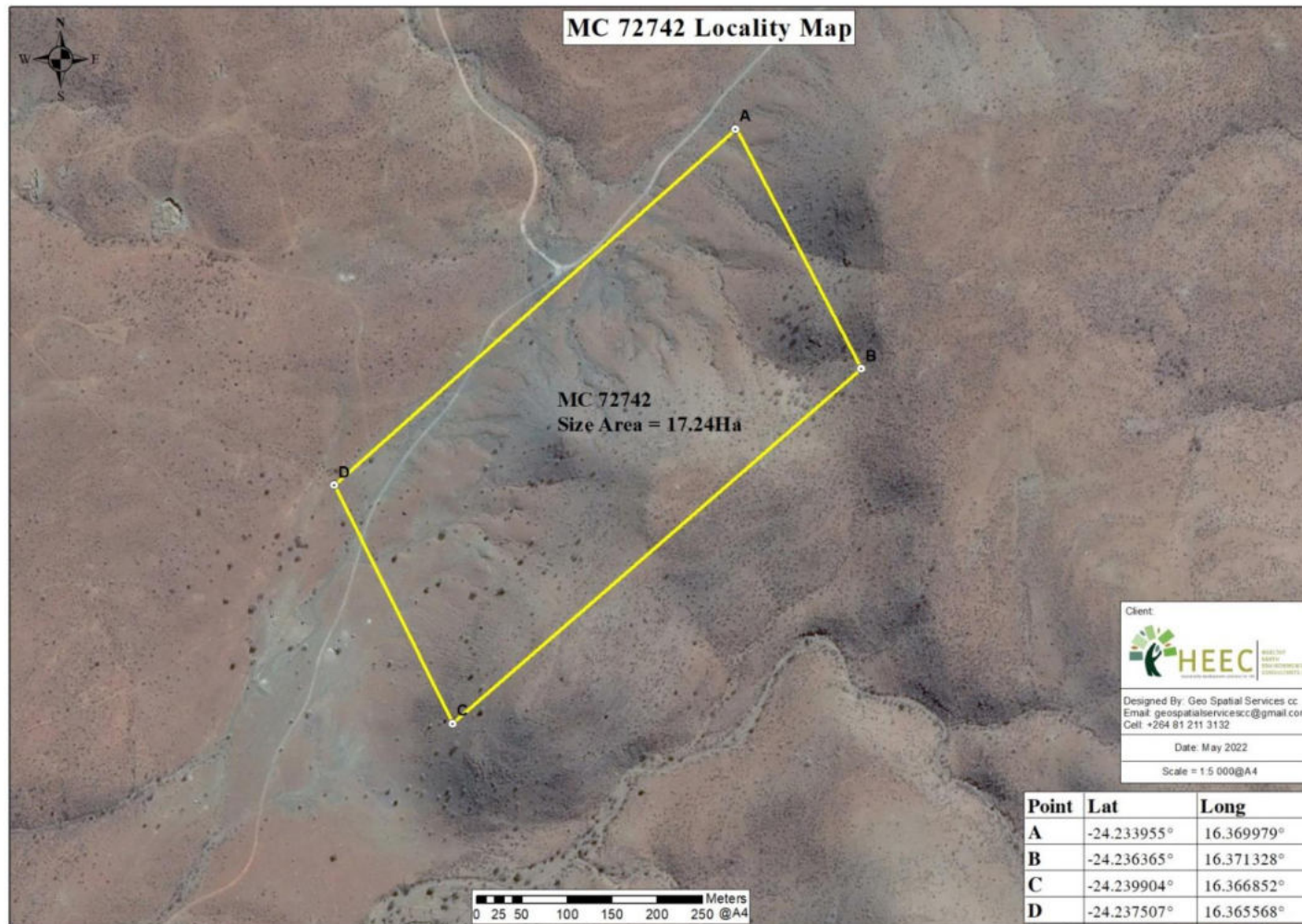


Figure 1: Mining claim 72742 at Farm Berghoek 506 (HEEC, 2022)