

2.3. PROJECT LOCATION

The envisaged Beuna Mining (Pty) Ltd Hydrometallurgy Copper Plant’s site is located near Sesfontein Settlement (about 6km to the east, **Figure 3, Map; Table 3, Corner point coordinates, and Figure 4, Site Layout**). The proposed project site is situated within the communal land area under the jurisdiction of the Nami-Daman Traditional Authority and is relatively flat with elevations ranging between 590 and 611 meters above sea level.

The company has identified a land area of ~ 100 (Ha) hectares for which it wishes to obtain a leasehold and therefore the need for, in addition to other legislative requirements they seek to obtain an environmental clearance certificate for the proposed processing plant.

The proposed project site is accessible, directly accessible thorough the C43 and then the D3707 district (gravel) road connecting Sesfontein via Kamanjab, Palmwag and Warmquelle. As far as is practical, the site shall be accessed through existing tracks, therefore no new roads or tracks will be created. Overall, all access by vehicles must be limited to existing access track.

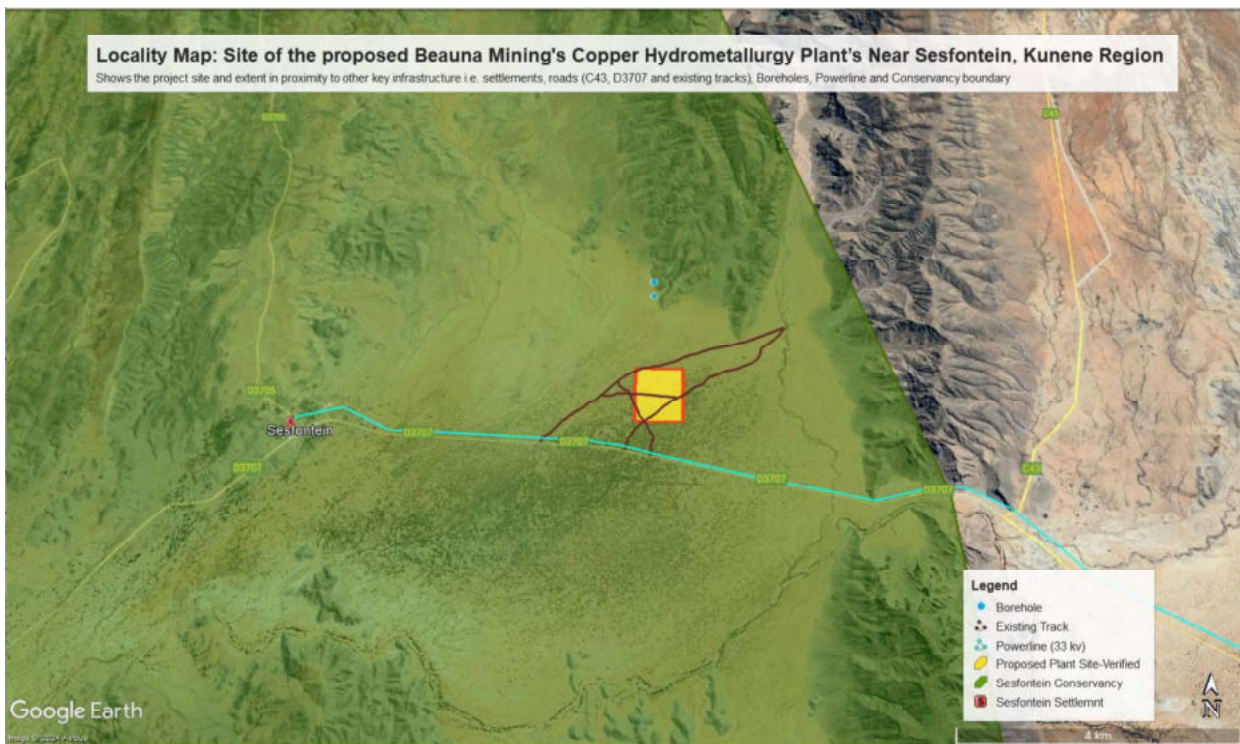
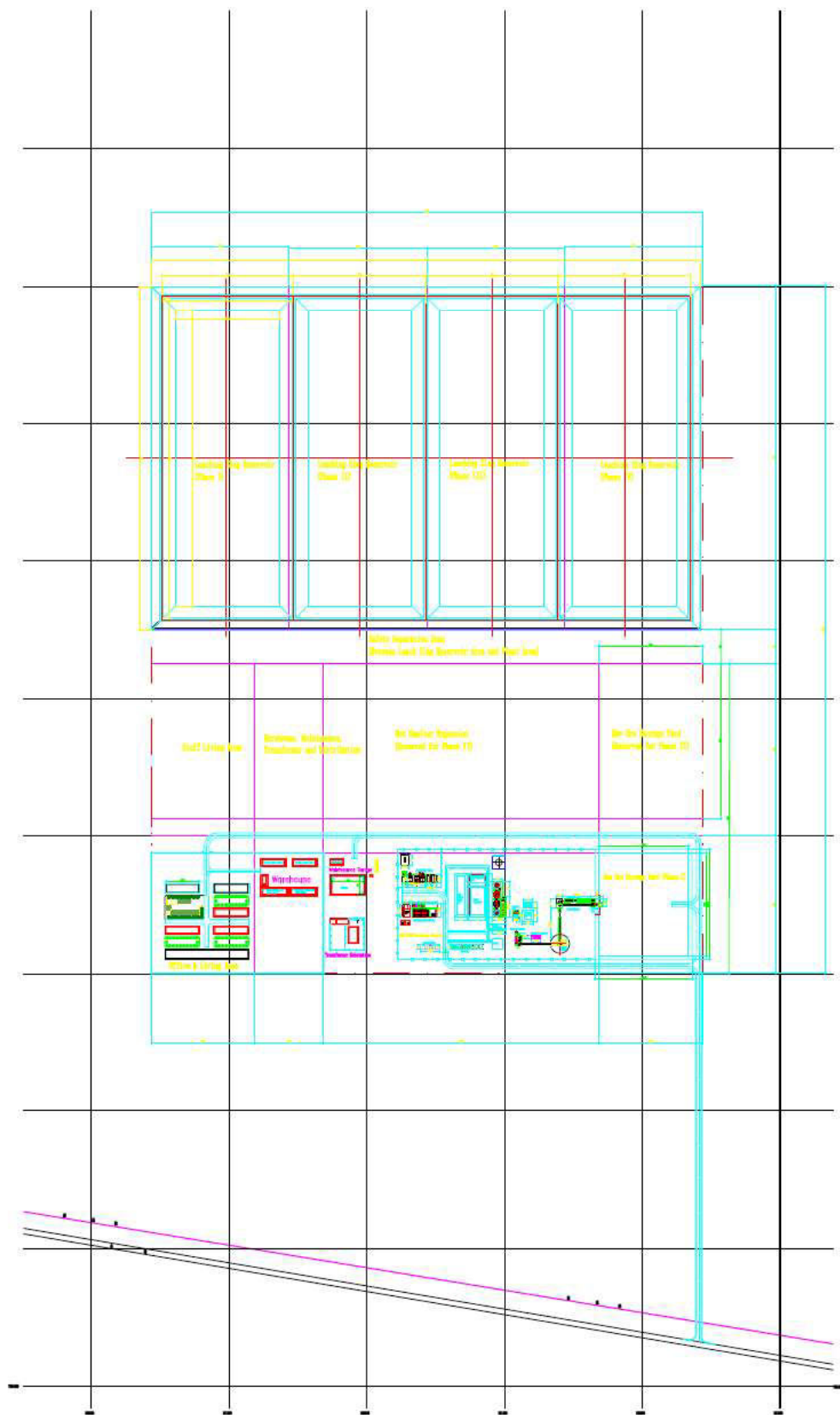


Figure 3: Show the location and area extent (~100 Ha) of the proposed Mining License 190 in the Erongo Region

Table 3: Corner coordinates of the proposed development site

Corner point	Latitude	Longitude
A – Site Corner Point 1	-19.122429°	13.677128°
B – Site Corner Point 2	-19.113441°	13.677239°
C – Site Corner Point 3	-19.113405°	13.669649°
D – Site Corner Point 4	-19.122381°	13.669579°



Dennis Mining (Pty) Ltd	
MOT/18 Dennis Hydrometallurgical Copper Plant	
General Arrangement Plan	
Scale:	1:2000

Figure 4: Show the site layout of the proposed hydrometallurgical copper plant