

# PROJECT BACKGROUND INFORMATION DOCUMENT

---

Renewal of BBA Dimension Stone Mining's Environmental Clearance Certificate in Respect to Dimension Stone (Marble Quarrying and continued exploration) on Mining Claims (MC 75066, 75067 and 75068) within EPL 7950, Northeast of Karibib, Erongo Region

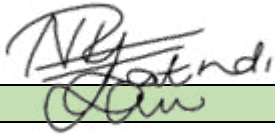
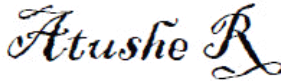
**APRIL 22**

---

Compiled for: BBA Dimension Stone Mining cc  
ERF 3136, Camelthorn Estate, Okahandja  
P. O. Box 686  
Windhoek, Namibia

Authored by: Mr. Lawrence Tjatindi

**DOCUMENT INFORMATION AND APPROVAL**

<b>Title</b>	Background Information Document for the Proposed Renewal of BBA Dimension Stone Mining’s Environmental Clearance Certificate in Respect to Dimension Stone (Marble Quarrying and continued exploration)	
<b>ECC Application Reference number</b>	APP- 003111	
<b>Location</b>	Mining Claims (MC 75066, 75067 and 75068) within EPL 7950, Northeast of Karibib, Erongo Region	
<b>Proponent</b>	BBA Dimension Stone Mining cc ERF 3136, Camelthorn Estate, Okahandja P. O. Box 686 Windhoek, Namibia	
<b>Author:</b>	<b>Signature</b>	<b>Date</b>
<b>Mr. Lawrence Tjatindi (EAP) 1</b>		19 April 2024
<b>Approval – Client 2</b>		
<b>Ms Atushe Mubonenwa</b>		22 April 2024
<p>Copy Right:</p> <p><i>“This document is the intellectual property of ELC and may only be used for the intended purpose. Unauthorized use, duplication, plagiarism or copying without referencing is prohibited”</i></p>		

ECC - 00782

DZIKAMBA, T. NYAMTOKO  
Serial: KRBasx782  
05/08/2020  
*[Signature]*



**REPUBLIC OF NAMIBIA**  
**MINISTRY OF ENVIRONMENT, FORESTRY AND TOURISM**

OFFICE OF THE ENVIRONMENTAL COMMISSIONER

**ENVIRONMENTAL CLEARANCE CERTIFICATE**

ISSUED

In accordance with Section 37(2) of the Environmental  
Management Act (Act No. 7 of 2007)

TO

**BBA Dimension Stone Mining CC**  
**P. O Box 868, Okahandja**

TO UNDERTAKE THE FOLLOWING LISTED ACTIVITY

**Establishment and mining of dimension stones on mining claims 70627,  
70628 & 70629 in the Karibib Constituency, Erongo Region.**

Issued on the date: **2020-07-21**

Expires on this date: **2023-07-21**

(See conditions printed over leaf)



Reduce  
Reuse  
Recycle



This certificate is printed without erasures or alterations

## 1. INTRODUCTION

BBA Dimension Stone Mining cc (herein referred to as the proponent), is a fully Namibian registered entity that ventures in minerals exploration and mining. Their aim is to take advantage of the opportunity for self-employment and job creation that exist in the mining sector of Namibia.

BBA Dimension Stone Mining cc seeks to operate their business activities within their proposed Mining Claims (**MC 75066, 75067 and 75068**) within EPL 7950 in the Erongo Region, in respect to Dimension Stone (Marble Mining and continued exploration). Principally, BBA Dimension Stone Mining cc had obtained Mineral Rights as **Mining Claims 70627, 70628 and 70629 (Ref No. 14/2/2/1/2/8126, on 28<sup>th</sup> May 2019)** from the Ministry of Mines and Energy, and a complementary Environmental Clearance Certificate (**ECC 782, 21<sup>st</sup> July 2020**) from the Ministry of Environment, Forestry and Tourism.

The proponent now, wishes to renew the Environmental Clearance Certificate on the revised Mining Claims (**MC 75066, 75067 and 75068**) at the same location and area extent in order to continue their dimension stone quarrying and continued exploration and to be undertaken on a small-scale mining activities.

To ensure that development activities are undertaken in an economic, social and environmental sound / sustainable manner, the Namibian Constitution and Environmental Management Act No. 7 of 2007 provides for an environmental assessment process.

In line with the environmental assessment process, an environmental scoping and environmental management plan encompassing environmental obligations associated with the proposed operations shall be submitted to the Department of Environmental Affairs in order to apply for Environmental Clearance Certificate (ECC).

The need for the assessment is triggered by the activities of the proposed operations falling under the following category of listed activities (**Table 1**):

Table 1: List of activities identified in the EIA Regulations which apply to the proposed project

EMA 2007 Legislation	Description of activity	Relevance to BBA Dimension Stone Mining cc Exploration Activities
<b>Activities 2</b>	<p>2.1 The construction of facilities for waste sites, treatment of waste and disposal of waste. 4 Government Gazette 6 February 2012 No. 4878 2.2 Any activity entailing a scheduled process referred to in the Atmospheric Pollution Prevention Ordinance, 1976.</p> <p>2.3 The import, processing, use and recycling, temporary storage, transit or export of waste.</p>	<p>The operation has a component of generation, waste management, handling and disposal</p>
<b>Activity 3</b>	<p>3.1 The construction of facilities for any process or activities which requires a license, right or other form of authorization, and the renewal of a license, right or other form of authorization, in terms of the Minerals (Prospecting and Quarrying Act), 1992.</p> <p>3.2 Other forms of quarrying or extraction of any natural resources whether regulated by law or not.</p>	<p>The construction of facilities for the purpose of carrying out a listed activities</p> <p>The quarrying or extraction of any natural resources whether regulated by law or not.</p>
<b>Activity 4</b>	<p>4. The clearance of forest areas, deforestation, afforestation, timber harvesting or any other related activity that requires authorization in term of the Forest Act, 2001 (Act No. 12 of 2001) or any other law.</p>	<p>The clearance of vegetation areas to allow the quarrying activity to take place</p>
<b>Activity 9</b>	<p>9.1 Manufacturing, storage, handling or processing of a hazardous substance defined in the Hazardous Substances Ordinance, 1974.</p>	<p>The operation has a component of storage and handling of a dangerous goods, including petrol, diesel, and liquid petroleum gas or paraffin onsite.</p>



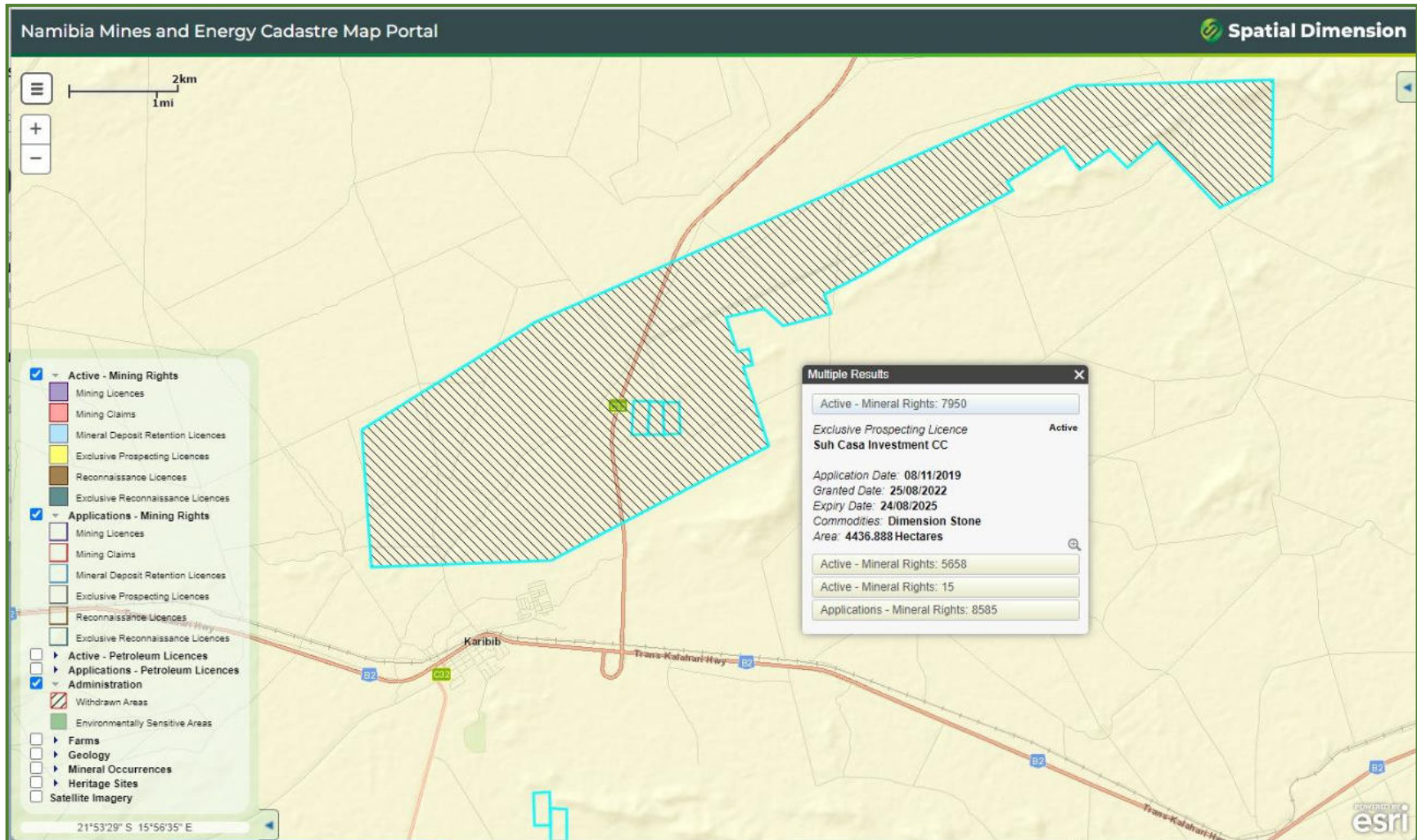


Figure 1: Show the location and area extent (53 Ha) of the proposed Mining Claims within EPL 7950 in the Erongo Region

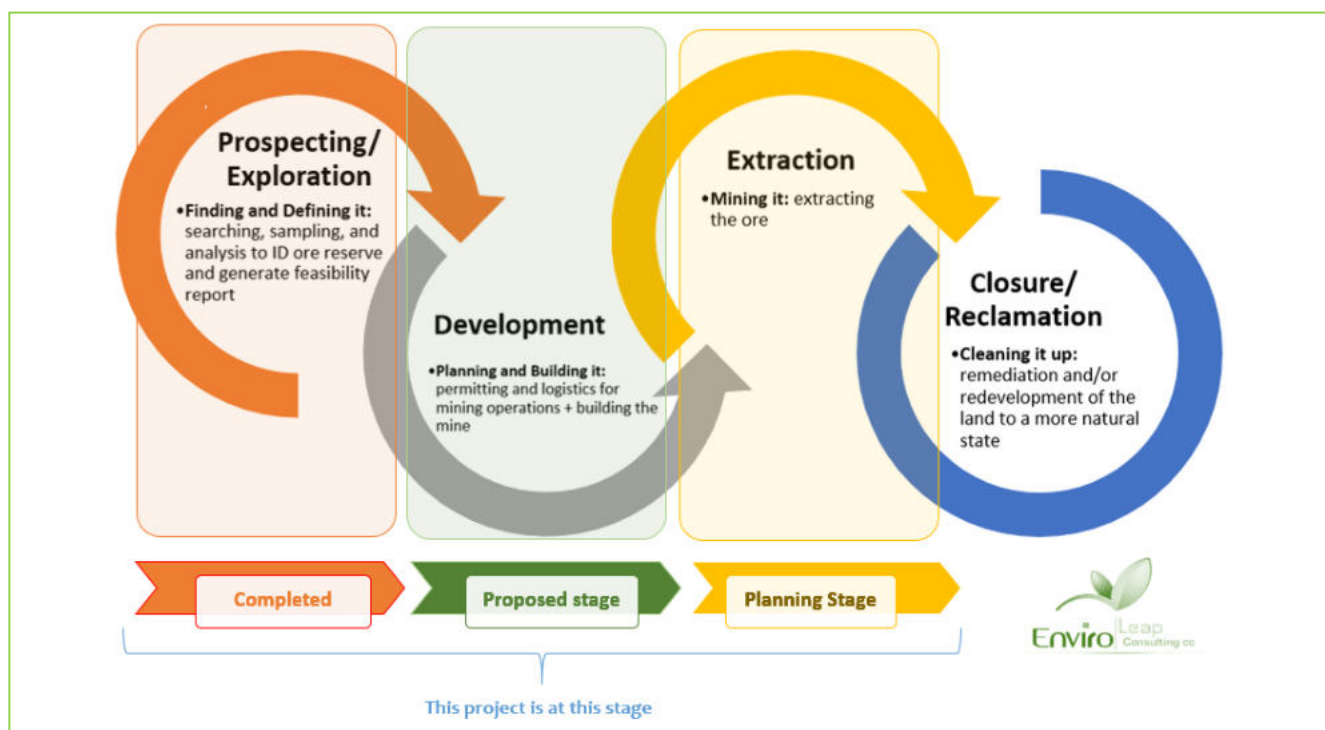
## 2. PURPOSE OF THE UPDATE EMP

- To comply with national legislation and standards for the protection of the environment.
- To limit potential impacts on biodiversity through the minimization of the footprint (as far as practically possible) and the conservation of residual habitat within the mine area.
- To keep surrounding communities informed of mining activities through the implementation of forums for communication and constructive dialogue.
- To develop, implement and manage monitoring systems to ensure good environmental performance in respect of the following: ground and surface water, air quality, noise and vibration, biodiversity and rehabilitation.

## 3. PROJECT DESCRIPTION

### 3.1. PROPOSED PROJECT ACTIVITIES

The immediate focus of planned exploration focused on interpreting the pending rock and soil samples as well as the historical data. A section of the broader Mining Claims, already host an operational quarry, and now the company proposes to continue its current operations within the existing footprint (as illustrated in **Figure 3**).



**Figure 3:** Shows a mineral discovery development life cycle, highlighting the current stage of mining

The following is the summary of the key components of the proposed project:

- Commodity Group: Dimension stone with special focus marble and other economic rocks. Size of Deposit: In excess of 100 million cubic meters and will continuous ongoing exploration activities, this amount will increase by fourfold.
- Estimated mine life: 25 years and beyond.
- Mining Technique: Quarry, with a diamond wire saws and stone cutting machines used for cutting out the 5 m<sup>3</sup> and 7 m<sup>3</sup> rectangular blocks.

- (iv) Processing: Further processing of the mined-out marble blocks will take place either in Karibib or Walvis Bay. At the processing plant, a giant saw is used to cut up the marble into more manageable pieces.
- (v) Sources of water supply: Groundwater from a local borehole to be drilled.
- (vi) Sources of electricity supply: Diesel generator and solar.
- (vii) Mining and operational equipment: Multiple excavators, wheel-loaders, forklift loaders, diesel generator sets, four-cylinder mining machines, wire saw machines, semi-automatic drilling machines, containers, trucks, 4 by 4 cars and air-compressors, and.
- (viii) Waste Rock: Waste rock will be used for mine rehabilitation. The effective capacity of the waste rock facility will vary but is likely to be in range of 120 × 90 m<sup>3</sup>, calculated with 0.85 as capacity utilisation coefficient of waste rock.

### 3.1.1 Mine Design and Construction

The mining techniques to be employed for the proposed project will be an open pit mining method using conventional diesel-powered equipment and a drill and blast, load and haul operation:

- Transportation facilities, including access roads to the site and on-site roads.
- Waste rock and mine blocks stockpiles.
- Linear infrastructure, including water supply systems, power infrastructure, including powerline and distribution systems (Generator and Solar).
- Containerised administration blocks and warehouses.
- Fuel supply and storage, workshop and equipment maintenance facilities.
- Wastewater treatment systems, domestic solid waste disposal storage / transfer facility, and storm water management in the pit and supporting infrastructure.

### 3.1.2 Mine Operations (Extracting the Marble)

The mine operational phase will involve the extraction of the marble blocks from the quarry using special cutting saws. The cut-out blocks will be pulled from the quarry to the stockpiling and sorting area (Plates 2.1 and 2.2). A basic shape of a large rectangle is aimed for, so that it is easier to shape the marble into useful objects during further processing. The following is the overall summary of the activities to be undertaken during the mining stage:

- Mining operations (actual mining operations as may be required).
- Transportation of the mined marble blocks from pit to the sorting areas, and then to Karibib or Walvis Bay for further processing.
- Waste rock management / reprocessing / recovery.
- Ongoing exploration support.
- Ongoing rehabilitation and maintenance.
- Waste management, Municipal waste water / solid waste management / transfer to Usakos / Karibib, and.
- Environmental performance monitoring.



The following is the indicative summary of the key equipment to be used for the proposed marble mining operations to be developed:

- Excavators, wheel-loaders, forklift loaders, diesel generator sets, four-cylinder mining machines, wire saw machines, semi-automatic drilling machines, containers, trucks, 4 by 4 vehicles, and air-compressors.

### **3.1.3 Transporting the Marble**

Once the marble is removed from the quarry, the blocks will be examined for quality (Plates 2.3 and 2.4). All the marble of a particular colour will be placed together. Cracks and impurities will be eliminated from the marble (Plates 2.3 and 2.4). The marble blocks will then be transported to the processing plant in Karibib or Walvis Bay by truck.

### **3.1.4 Processing the Marble**

During the processing stage, the marble will be cut into more usable shapes. This may involve running through epoxy and other treatment processes followed by polishing processes to make it usable. The marble is cut into different shapes for different tasks. Some of the most common types of marble products include: sculpture marble, marble tiles, countertop marbles and others. Finally, the marble is shipped to different places where it can be sold locally and internationally (export).

## **3.2. SUPPORTING INFRASTRUCTURE AND SERVICES**

### **3.2.1 Supporting Infrastructure and Services**

The following supporting infrastructures and services will be required:

- (i) External and internal roads network: The Proponent will upgrade the already existing external and internal road networks and created additional new access road linking the quarries (mine) sites to the main access;
- (ii) Water supply: Raw water will be sourced from local groundwater resources. The Proponent will utilise the existing boreholes and will also drill additional boreholes as may be require;
- (iii) Staff transport arrangements from Karibib to the mine sites will be provided by the Proponent, and;
- (iv) Karibib based staff accommodation services: Will use the already existing properties in the town of Karibib.

### **3.2.2 Access roads / tracks**

The MCs 75066, 75067 and 75068 are situated in the Karibib District, about Five (5) km Northeast of the Karibib Town in the Erongo Region. The EPL is accessible directly via the B2 (Trans-Kalahari) and the C33 connecting the Karibib to Omaruru then branching onto a farm road at about 6.6 km from the B2 / C33 turn-off. Other section of the claims will only be accessed by foot to ensure minimum impacts on the receiving environment.

As far as is practicable, all site particularly the base-camp and sampling sites shall be accessed through existing tracks, therefore no new roads or tracks will be created. Overall, all access by vehicles must be limited to existing access or controlled mine tracks.

Consequently the mining license area is accessible by 2x4 / 4x4 pick-up vehicle by the existing tracks and otherwise, the sensitive section of the area will only be accessed by foot to ensure minimum impacts on the receiving environment

### **3.2.3 Waste (Domestic / Hazardous) Management**

In terms of waste generation and management, the predominant type of waste that will be generated during the operations, in small volumes, is domestic waste i.e. packaging material (paper, wooden box and plastic sampling bags), waste rock and potentially hydrocarbons from storage and handling of fuels and lubricants onsite. Domestic waste must be stored in heavy duty garbage bags in specifically designated bins and disposed of correctly at the Karibib waste disposal site.

Domestic Waste: Different waste containers will be provided onsite for waste sorting and safe disposal of waste generated onsite. These will be collected on a monthly basis and sent to nearest approved waste management facility in the area such as Karibib.

Sanitation: Portable ablution facilities with septic tanks will be put up for sanitation purposes for the exploration and mining teams and will be emptied in good time according to manufacturers' instructions.

### **3.3. MINE CLOSURE, DECOMMISSIONING, REHABILITATION AND AFTERCARE**

In line with the new regulatory requirements by the Ministry of Mines and Energy (MME), a Mine Closure Plan will be required to be submitted to the regulators. The Mine Closure will provide a detailed plan of actions and commitments including financial and human resources for effective management of the likely environmental liabilities at mine closure and aftercare stages of the proposed mining and ongoing activities in the ML No. 195. Regular assessments and evaluation of the environmental liabilities during the mining stage shall be undertaken to ensure that adequate provision of the necessary resources towards good environmental management at mine closure and aftercare stages. The following is the summary of the activities to be associated with the mine closure and aftercare stages:

- Implementation of sustainable socioeconomic plan.
- Closure of open pits.
- Closure of solid waste transfer station.
- Backfill all excavated areas.
- Closure of the mined blocks storage area.
- Decommissioning of water and electricity infrastructure.
- Overall land reclamation and restoration of internal roads, and.
- Revegetation and aftercare as may be required.

The Mine Closure Plan activities consist of following five (5) steps that will be implemented by Proponent and where applicable in consultation with the key stakeholders:

(i) Ongoing rehabilitation: This will be implemented during the exploration phase and from day one (1) of the mine starting to produce coupled with the recruitment of a new workforce. Unwanted exploration and mine sites excavated or disturbed during the mine operation phase will not wait the final mine closure rehabilitation but will be attended to as ongoing activities and financed within an ongoing annual mine operational budget allocation to be detailed in the Mine Closure Plan Report.

(ii) Mine closure: Once production stops, the number of workers will be reduced and a small labour force will be retained to permanently shut down the mine. The mining company may have to provide re-training or early retirement options to their workers before the mine is closed. The cost of the re-skilling, early retirement and retrenchments will be funded from the final Mine Closure Plan budget allocations to be detailed in the Mine Closure Plan Report.

(iii) Decommissioning: Will be undertaken by a small crews or contractors who will be responsible for decommissioning or taking apart the mining supporting infrastructure and equipment. Pipelines will be drained, equipment and valuable parts will be cleaned and may be sold, buildings will be repurposed or demolished, warehouse materials will be recovered, and waste will be disposed of. The cost of the decommissioning will be funded from the final Mine Closure Plan budget allocations to be detailed in the Mine Closure Plan Report.

(iv) Final rehabilitation\Remediation\reclamation: The objective of reclamation will be to return the Mining Claim (MC) area to an acceptable standard of socioeconomic use, ensuring that any landforms and structures are stable, and any watercourses are of acceptable water quality. Reclamation will involve a number of activities such as removal of any hazardous materials, reshaping the land, restoring topsoil, and planting native grasses, trees, or ground cover as may be applicable. The cost of the remediation/reclamation will be funded from the final Mine Closure Plan budget allocations to be detailed in the Mine Closure Plan Report, and.

(v) Post-closure and aftercare including monitoring: Monitoring programmes will be used to assess the effectiveness of the reclamation measures and to identify any corrective action that may be needed during the post closure and aftercare stage. In addition, the project area will also require long-term care and maintenance after mine closure such as periodic monitoring and maintenance of waste rock containment structures and secured hazardous areas, and monitoring any ongoing remediation technologies that have been implemented.

The aftercare period will run for period of between two (2) to five (5) years or as may be agreed with the stakeholders especially the land owners and relevant Government regulators such as MME, MEFT and MAWLR. The cost for post-closure and aftercare will be funded from the final Mine Closure Plan budget allocations to be detailed in the Mine Closure Plan Report

## 4. REGULATORY FRAMEWORK

### 4.1. Environmental Requirements under the Environmental Management Act

#### 4.1.1. Environmental Management Act (No.7 of 2007)

The Environmental Management Act (also referred to as the EMA), stipulates that for each developmental project, which is listed under the EIA regulations, an Environmental Impact Assessment (EIA) should be conducted.

The aim of the EIA is to identify, assess and ascertain potential environmental impacts that may arise from the proposed activity. According to the EMA, an EIA is a process of identifying, predicting, interpreting and communicating potential impacts to interested and affected parties (I&APs).

The proposed prospecting activity triggers some listed activities in terms of the Environmental Management Act no. 7 of 2007 and the Environmental Impact Assessment Regulations of 6 February 2012 that may not be undertaken without an environmental clearance certificate (ECC). The triggered activities are shown in table 1.

#### The Environmental Impact Assessment Process

An EIA is a process that evaluates the likely environmental and social effects of a proposed project or development, which identifies suitable mitigation for to avoid or minimize the potential Impacts.

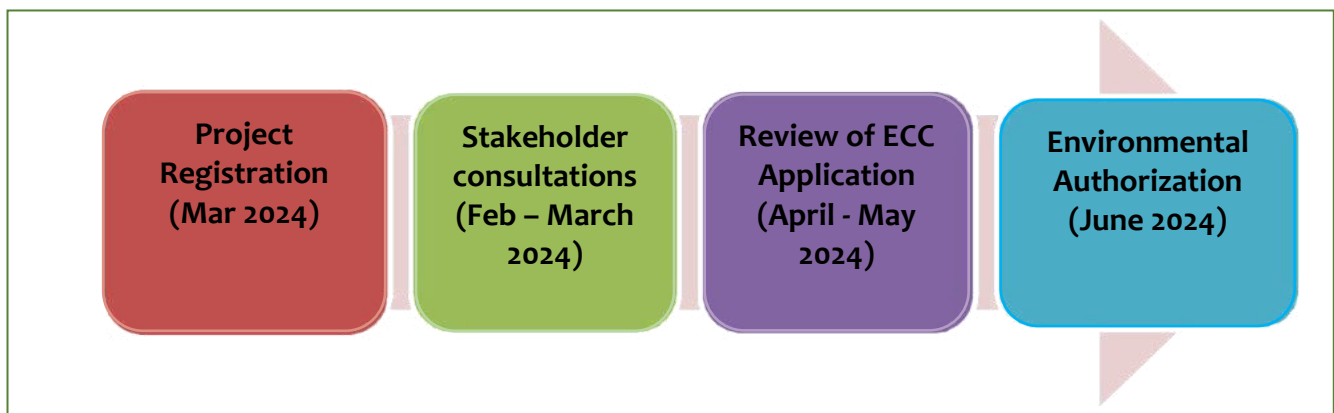


Figure 3: Anticipated Environmental Assessment Timeline

## 5. POTENTIAL ENVIRONMENTAL IMPACT ASSOCIATED WITH THE PROPOSED PROSPECTING ACTIVITIES

While the proposed exploration activities stimulate economic development and diversification in order to further create employment opportunities and thus trickling benefits to the larger Namibian population, it also create opportunity for unprecedented negative impacts.

Potential impacts may vary in terms of scale (locality), magnitude and duration e.g. minor negative impacts in the form of visual intrusion, dust and noise pollution especially during the exploration phase and process. Below is a summary of the likely positive impacts that will be assessed for the different phases of the proposed exploration activities.

The following is a summary of the likely negative impacts that have been assessed for the different phases of the proposed exploration activities:

- i. Land use (Likely impacts are negligible; the M area and sites are isolated from the distant settlements, and conservation zones).
- ii. Noise (Likely impacts are low as the site is far from residential areas).
- iii. Ecological and biodiversity loss (Likely impacts are localized and low).
- iv. Health and safety (Overall likely impacts are low with correct PPE).
- v. Solid and hazardous waste management (Likely impacts are low with a solid waste management plan and minimal hydrocarbon fuel use).
- vi. Socioeconomic (Likely negative impacts are low)

## 5. STAKEHOLDERS CONSULTATION

As stipulated in the EIA Regulations (paragraphs 7 and 21), public consultation is a pre-requisite and forms an integral component of the EIA. Comments made during the consultation should be properly captured and addressed in both the EIA Scoping Report and EMP respectively.

Engaging and consulting with the public (residents, authorities etc.) and organizations that may be affected by, or interested in the proposed development allows for all parties to be informed of the proposals and provides an opportunity for views, opinions and concerns to be registered.

This process benefits the EIA and design development process as the public may provide information that may not be available otherwise, e.g. past experience and local knowledge, and local concerns and can be taken into consideration in the EIA. Engaging and consulting early on in the EIA process minimizes potential complaints and objections, and assists the ECC application process.

The objectives of the environmental scoping assessment are noted in Section 1 of this Report. Section 6 of this Scoping Report includes a summary of the findings, the overall conclusions and the recommendations. The Scoping Report was made available for a 30-day I&AP and authority review period, as outlined in the EMA Regulations of 2012. Although adverts were put in local newspapers **Confidente** newspaper on **26<sup>th</sup> Jan – 02<sup>nd</sup> Feb 2024**, **Windhoek Observer** newspaper on **19<sup>th</sup> Jan and 01<sup>st</sup> Feb 2024**, and then in **The Villager** newspaper on the **19<sup>th</sup> January 2024** in order to notify and inform the public of the proposed projects and invite I&APs to register.



## APPENDIX A: ENVIRONMENTAL MANAGEMENT PLAN

### OVERALL OBJECTIVES OF THE EMP

The following overall environmental objectives have been set for the BBA Dimension Stone Mining cc exploration and mining development project:

- To comply with national legislation and standards for the protection of the environment.
- To limit potential impacts on biodiversity through the minimization of the footprint (as far as practically possible) and the conservation of residual habitat within the mine area.
- To keep surrounding communities informed of mining activities through the implementation of forums for communication and constructive dialogue.
- To develop, implement and manage monitoring systems to ensure good environmental performance in respect of the following: ground and surface water, air quality, noise and vibration, biodiversity and rehabilitation.

### KEEPING EMPS UP TO DATE

This Environmental Management Plan (EMP) document is designed to meet legal requirements and avoid or minimize the impacts associated with the implementation of BBA Dimension Stone Mining cc exploration and mining development. It is the intention that this EMP should be seen as a “living document” which will be amended during the operation, as the activities might change or new ones be introduced.

Should a listed activity(s) as defined in the Environmental Impact Assessment Regulations: Environmental Management Act, 2007 (Government Gazette No. 4878) be triggered (as a result of future modifications/changes at the mine), this EMP will be updated as a result of another EIA process as stipulated in the regulations.

### IMPACTS MANAGEMENT / MITIGATION MEASURES

**Table 16.** Impact on the Biophysical Environment – mining license site Access and use of vehicles

Issue	Management commitment	Phase
Understanding who the stakeholders are	<ul style="list-style-type: none"> <li>• Maintain and update the stakeholder register, including stakeholders’ needs and expectations.</li> <li>• A representative database would include all relevant local government, service providers, indigenous populations, Traditional Authorities (TAs), NGOs or community-based organizations</li> <li>• Ensure that marginalized and vulnerable groups are also considered in the stakeholder communication process.</li> <li>• Record partnerships as well as their roles, responsibilities, capacity and contribution to development.</li> </ul>	All
Liaising with interested and affected parties at all phases in the mine life	Devise and implement a stakeholder communication and engagement strategy.	All
Responsibility	BBA Dimension Stone Mining cc and Enviro-Leap Consulting (On contract basis)	

**Table 17.** Impact on the Biophysical Environment – mining license site Access and use of vehicles

<b>Impact Event</b>	<b>Disturbances on Biodiversity in respect to access tracks</b>	
<b>Desired mitigation outcome</b>	The objective of the mitigation in respect to impacts on biodiversity is to ensure that as much as possible, disturbance on biodiversity is avoided and prevented while the proposed prospecting activities is undertaken.	
<b>Proposed Mitigation Measures</b>	<ul style="list-style-type: none"> <li>• Strict compliance with the Relevant authorities guidelines and EMP is recommended in respect to managing incidental events;</li> <li>• Exploration activity must be limited to the pre-identified pegmatites belts within the mining license area</li> <li>• Unless necessary and agreed with the relevant authorities, no new access tracks shall be created and no lodging shall be allowed in sensitive zones</li> </ul>	All
<b>Responsibility</b>	BBA Dimension Stone Mining cc and Enviro-Leap Consulting (On contract basis)	

**Table 18.** Impact on the Biophysical Environment – Bulk sampling and ore extraction

<b>Impact Event</b>	<b>Disturbances on Biodiversity in respect to sampling and trenching activities</b>	
<b>Desired mitigation outcome</b>	The objective of the mitigation in respect to impacts on biodiversity is to ensure that as much as possible, disturbance particularly on wildlife (poaching) and flora (clearing / damage) species is reduced and or prevented.	
<b>Proposed Mitigation Measures</b>	<ul style="list-style-type: none"> <li>• Strict compliance with the Forestry Act and Regulations in respect to vegetation clearing, Relevant authorities guidelines and EMP is recommended in respect to managing incidental events;</li> <li>• Should the proponent require clearing, removal and transplantation of any protected plant species – services of an appropriately qualified botanist / ecologists must be sought and relevant permissions obtained prior to any such activity being undertaken</li> <li>• A plant survey must be conducted and all protected species clearly marked and protected prior to setting-up any sampling site and or digging any trench for geological sampling</li> <li>• Exploration activity must be limited to the pre-identified pegmatites belts within the mining license area thus reducing the spatial impacts to key areas of the EPL</li> <li>• Unless necessary and agreed with the relevant authorities, no new access tracks shall be created and no lodging shall be allowed in sensitive zones</li> <li>• Temporary bins and spill kits must be provided to ensure that all waste material including hydrocarbons are well contained prior to final disposal at approved sites in either Omaruru or Usakos</li> <li>• Unless in an emergency, no equipment (vehicles and drill rigs) should be serviced in the field thus preventing unnecessary spillage of hydrocarbons</li> </ul>	All
<b>Responsibility</b>	BBA Dimension Stone Mining cc and Enviro-Leap Consulting (On contract basis)	

## 5.2.2 IMPACTS ON THE SOCIO-ECONOMIC ENVIRONMENT

**Table 19.** Impact on the Biophysical Environment – Waste Management (Effluent, Solid and Hydrocarbons)

Impact Event	Waste generation and disposal	Phase
<b>Desired mitigation outcome</b>	The objective of the mitigation in respect to waste generation is to ensure that the best scenic value and integrity of the affected environment maintained and or enhanced by reducing chances of littering through proper use of waste management facilities.	
<b>Proposed Mitigation Measures</b>	<ul style="list-style-type: none"> <li>Environmental awareness is an important aspect of environmental management, therefore all project staff and service providers must be educated of the environmental compliance requirements and urged to comply accordingly on induction with the project site.</li> <li>Given that lodging is recommended to be at existing camp-sites and or lodges, this aspect shall be managed as part of the current property owners compliance requirements</li> <li>In the field, hydrocarbon waste shall be contained (in spill kits) and stored in appropriate heavy-duty plastic cabbage , transported to the nearest waste-oil recycling / solid waste disposal facility in Omaruru or Usakos Towns</li> <li>A sufficient number of spill kits shall be acquired and strategically placed, particularly near every sampling site to ensure that timely response to any potential fuel and lubricant spills is conducted (should the project require any sampling activities to be undertaken). These shall include an on-site used oil disposal bin(s)</li> <li>Equally, effluent waste shall be managed in compliance with the lodging host’s requirements, although during any sampling activities – temporary dry-pit toilet facility must be provided at every site.</li> </ul>	All
<b>Responsibility</b>	BBA Dimension Stone Mining cc and Enviro-Leap Consulting (On contract basis)	

**Table 20.** Environmental Impact: Human Health and Safety

Impact Event	Prevention and mitigation of any health and safety hazards / risks	Phase
<b>Desired mitigation outcome</b>	The objective of the mitigation in respect to health and safety hazards is to ensure that the health, safety and protection of both the project staff and community receive priority in terms of budgetary provision and compliance	
<b>Proposed Mitigation Measures</b>	<ul style="list-style-type: none"> <li>Strict compliance with the EMP is recommended in respect to managing incidental events;</li> <li>Carry sufficient First Aid equipment to ensure that minor injuries reduces need to access local health facility and therefore minimizing potential strain on local services</li> <li>Strict compliance with national health protocols as and when directive are issued in respect to any disease outbreak and or recurring pandemics such as HIV / AIDS and Corvid-19</li> <li>Strict ban on use of any toxic substances within and during the working environment must be prohibited</li> </ul>	All
<b>Responsibility</b>	BBA Dimension Stone Mining cc and Enviro-Leap Consulting (On contract basis)	

**Table 21: Impact on the Social Environment – Air and Noise Pollution**

<b>Impact Event</b>	<b>Disturbances to the social environment</b>	<b>Phase</b>
<b>Desired mitigation outcome</b>	The objective of the mitigation in respect to ambient air quality and sense of place / noise and chance is to ensure that all possible receptors are identified and practical measures are put in place to reduce these impacts and or respond with appropriate mitigation to complaints	
<b>Proposed Mitigation Measures</b>	<ul style="list-style-type: none"> <li>• Strict compliance with the EMP is recommended in respect to managing incidental events;</li> <li>• Noise complaint register must be kept and maintained regularly with mitigation measures adopted accordingly.</li> <li>• All excessive noise generating activities must be strictly carried out during the day between 08h00 (am) and 17h00 (pm) week days only.</li> <li>• Conditions of the Environmental Clearance Certificate and Surface-use Agreement (with the relevant Traditional Authority and Town) must be accordingly adhere to.</li> <li>• As much as possible, it is recommended that vehicles with the most minimum footprint are used such as smallest excavator and or portable drill rig (drawn on a trailer).</li> </ul>	
<b>Responsibility</b>	BBA Dimension Stone Mining cc and Enviro-Leap Consulting (On contract basis)	

**Table 22: Impact on the Social Environment – Culture, Heritage and Scenic values**

<b>Impact Event</b>	<b>Disturbances to the heritage and scenic value of the environment</b>	<b>Phase</b>
<b>Desired mitigation outcome</b>	The objective of the mitigation in respect to impacts on cultural and archaeological heritage integrity is to ensure that at all times, project staff are vigilant of the potential to intrude, disturb and or damage important artifacts and therefore must avoid wandering onto any protected and or sensitive known or identified site.	
<b>Proposed Mitigation Measures</b>	<ul style="list-style-type: none"> <li>• Strict compliance with the EMP is recommended in respect to managing incidental events</li> <li>• Contractors working on the site should be made aware that under the National Heritage Act, 2004 (Act No. 27 of 2004) any items protected under the definition of heritage found in the course of development should be reported to the National Heritage Council <ul style="list-style-type: none"> <li>• The chance finds procedure as outlined in the EMP must be implemented at all times, and.</li> <li>• Detailed field survey should be carried out if suspected archaeological resources or major natural cavities / shelters have been unearthed during the proposed exploration and test mining operations.</li> </ul> </li> </ul>	
<b>Responsibility</b>	BBA Dimension Stone Mining cc and Enviro-Leap Consulting (On contract basis)	

**Table 23:** Impact on the Economic Aspect

Impact Event	Disturbances on social and economic aspects	Phase
Desired mitigation outcome	The objective of the mitigation in respect to economic impacts relating to the proposed activity, is to ensure that potential negative economic impacts on other and existing land-use are prevented, reduced and or mitigated and the positive ones enhanced.	
Proposed Mitigation Measures	<ul style="list-style-type: none"> <li>It is critical that timely and continuous communication and dissemination of information with the local community is ensured to alleviate potential sense of social marginalization, drive gender equality and enhance the understanding and perception of the benefits associated with BBA Dimension Stone Mining cc 's activities</li> <li>To enhance the positive impacts relating to marginal net benefits for the micro-economy (local residence of Omaruru or Usakos Towns Settlement and the region at large) and national economy at larger, legislative provisions to Affirmative Action and Labour Welfare must be observed</li> <li>It is strictly recommended that BBA Dimension Stone Mining cc negotiates and signs a Surface Use Agreement detailing aspects of conduct and benefit distribution with all key stakeholder i.e. Traditional Authority, Park and other Operators or support institutions e.g. NGOs / CSOs)</li> </ul>	All
Responsibility	BBA Dimension Stone Mining cc and Enviro-Leap Consulting (On contract basis)	

**Table 24:** Site Closure and Rehabilitation

Impact Event	Disturbances on social and economic aspects	Phase
Desired mitigation outcome	The Proponent will commit to establishing a rehabilitation plan as part of the mine closure plan. A conceptual mine closure plan with costing is under development must be compiled by InterContinental Mining in association with Enviro-Leap and forms part of the environmental compliance and monitoring programme.	
Proposed Mitigation Measures	<ul style="list-style-type: none"> <li>BBA Dimension's shall submit regular (bi-annual or annual Environmental Reports) to the relevant Ministry stating the exploration activities and environmental performance of the project.</li> <li>Staff of the MET or Ministry of Mines and Energy may at any time inspect the exploration area. Internal and external monitoring should involve InterContinental Mining's safety and environmental officer and members of the MEFT.</li> <li>Should the decision be taken that the project is not economically viable the area will be rehabilitated. The rehabilitation measures that are set out in the Rehabilitation Plan (to be compiled and approved by MEFT) are binding to all personnel on site including the crew and contractors.</li> </ul>	Closure
Responsibility	BBA Dimension Stone Mining cc and Enviro-Leap Consulting (On contract basis)	



# CLASSIFIEDS

To place a classifieds advert with us, please contact Ms. Fransina Fredericks  
T: +264 (61) 246 136 C: 264 81 231 7332 E: fransina@confidentenamibia.com



**BU BUTCHERY**  
Affordable Quality Meat

**NAMIBIA GOAT MEAT SPECIALIST**

- Goat Chilli Bites
- Goat Droewors
- Goat Smokey Bites
- Goat Carcasses

**PRODUCTS**

- Beef
- Boerewors
- Goat Meat
- Mince
- Lamb
- Game
- Matangara & Smileys



**CONTACT US**  
+264 81 606 7686  
@bufarming

**WE ARE LOCATED AT**  
Dorado Valley Shopping Complex  
c/o Ars & Dr. Kusima Rirusko Street



**ONDANGWA CAR HIRE**

GET GOING IN ONE OF OUR RENTAL CARS



<b>OND</b> Ondangwa +264 81 155 40212 Ondangwa Airport Lodge	<b>NDU</b> Rundu +264 85 148 0956 Hotel Rundu	<b>WDH</b> Windhoek +264 85 148 0858 Mobile Office
---	--	---

info@ondangwa-carhire.com

[www.ondangwa-carhire.com](http://www.ondangwa-carhire.com)

**We Are HIRING**

**ADMIN & PARTS SALESPERSON**

**Requirements :**

- Diploma/MQF 16 in Office Administration
- Marketing skills
- Strong understanding of automotive car parts
- Proficiency in MS word and Excel
- Excellent communication and interpersonal skills

**SUBMIT YOUR CV**

mercmanmotors@gmail.com



**PROFESSIONAL LAUNDRY AND DRY CLEANING SERVICES**

**DRESSED IN TIM LAUNDRY & DRY CLEANERS**

**SUMMER SPECIALS**



Washing of **DUVETS BLANKETS COMFORTERS**

Wedding Dresses - NS350  
Blankets - 2 for NS180

Washing | Ironing | Folding  
We also Clean Curtains

All items to be prepaid!!!

Call us on: +2648 1659225  
Visit us, we are located in Dorado Valley Shopping Mall

CALL FOR REGISTRATION AS INTERESTED AND AFFECTED PARTIES  
**ENVIRONMENTAL ASSESSMENT IN RESPECT TO EXPLORATION ACTIVITIES ON EPL 9032, KUNENE & OMUSATI REGIONS**

**1. PROJECT SITE AND DESCRIPTION**  
Jacmo Investment cc (the Proponent), intends to apply to obtain an Environmental Clearance Certificate for its proposed **Base and Rare Metals, Dimension Stone, Industrial Minerals & Precious Metals on EPL 9032** totalling an area of 28763 Ha. The EPL overlays three communal conservancies i.e. Ombombo-Masitu, Uukwauludhi and Uukolonkadi-Ruacana Conservancies. The key component of the proposed activity entails mining of Marble and continued exploration activities.

**2. PUBLIC PARTICIPATION PROCESS**  
Enviro-Leap Consulting invites all Interested and Affected Party (I & AP) to register and receive Environmental Assessment (EIA, Scoping and EMP) documents relating to the proposed project for their comments and input.

**3. COMMENTS AND QUERIES**  
Interested and Affected Parties are herewith request to register by writing to us at the address below no later than **29 February 2024**.

Please register and direct all comments, queries to:  
Mr. Shadrack Tjiramba, Environmental Assessment Practitioner  
Email: [eap.trigen@gmail.com](mailto:eap.trigen@gmail.com)

CALL FOR REGISTRATION AS INTERESTED AND AFFECTED PARTIES  
**ENVIRONMENTAL ASSESSMENT FOR THE PROPOSED BOHALE INVESTMENT CC APPLICATION FOR ENVIRONMENTAL CLEARANCE IN RESPECT TO DIMENSION STONE EXPLORATION AND MINING ON MINING LICENSE (ML) No. 190, ERONGO REGION**

**1. PROJECT SITE AND DESCRIPTION**  
Best Cheer Investment (Pty) Ltd (the Proponent), in collaboration with Bohale Investment cc (License Holder) intends to apply to obtain an Environmental Clearance Certificate for its proposed Dimension Stone mineral right on ML No. 190 totalling an area of 3986 Ha. The ML covers parts of the Karibib Town and Townlands, Farm Katjimukju No. 55 and Farm Okongava Ost No. 72 situated in the Karibib District of the Erongo Region. The key component of the proposed activity entails mining of Marble and continued exploration activities.

**2. PUBLIC PARTICIPATION PROCESS**  
Enviro-Leap Consulting invites all Interested and Affected Party (I & AP) to register and receive Environmental Assessment (EIA, Scoping and EMP) documents relating to the proposed project for their comments and input.

**3. COMMENTS AND QUERIES**  
Interested and Affected Parties are herewith request to register by writing to us at the address below no later than **16 February 2024**.

Please register and direct all comments, queries to:  
Mr. Shadrack Tjiramba, Environmental Assessment Practitioner  
Email: [eap.trigen@gmail.com](mailto:eap.trigen@gmail.com)

**ENVIROLEAP CONSULTING cc**  
P.O. Box 20784, Windhoek | +264 81 133 1844 | [eap.trigen@gmail.com](mailto:eap.trigen@gmail.com)

**CONFIDENTE**

**ENVIROLEAP CONSULTING cc**

P.O. Box 20784, Windhoek | +264 81 133 1844 | [eap.trigen@gmail.com](mailto:eap.trigen@gmail.com)

**ENVIRONMENTAL IMPACT ASSESSMENT (EIA) FOR THE PROPOSED SUBDIVISION, CLOSURE AND REZONING OF PUBLIC OPEN SPACES IN OKAHAO, OMUSATI REGION**

Notice is hereby given to all potential Interested and Affected Parties (I&APs) that an application for the Environmental Clearance Certificate will be submitted to the Environmental Commissioner in terms of the Environmental Management Act (Act No. 07 of 2007) for the following proposed activities.

- Permanent Closure of Erf 1336, Okahao Proper, as a "Public Open Space" and Rezoning to "Business"
- Subdivision of Erf 884, Okahao Extension 3, into Portion A, B & Remainder, Closure & Rezoning of Portion A & B from "Public Open Space" to "Business"
- Subdivision of Erf 1535, Okahao Extension 5 into Portion A, B, C & Remainder, Closure and Rezoning of Portion A & B from "Public Open Space" to "Business" and Portion C to "Street".

Location: Okahao, Omusati region  
Proponent: PH Builders cc  
EAP: Green Gain Environmental Consultants cc

In terms of the Environmental Management Act, 07 of 2007, the rezoning of the land zoned "Public Open Space" to any other land use may not be undertaken without an EIA being carried out. I&APs are hereby invited to register, request for Background Information Document (BID), and send their comments to [gia@greengain.com.na](mailto:gia@greengain.com.na) before **08 February 2024**.

The need for a public meeting will be communicated to all registered I&APs.

**For more information**  
+264811422927 or [jkondja@gmail.com](mailto:jkondja@gmail.com)

**Green Gain Consultants**

CALL FOR REGISTRATION AS INTERESTED AND AFFECTED PARTIES  
**ENVIRONMENTAL ASSESSMENT FOR THE PROPOSED BBA DIMENSION STONE MINING CC APPLICATION FOR ENVIRONMENTAL CLEARANCE IN RESPECT TO DIMENSION STONE MINING IN THE ERONGO REGION**

**1. PROJECT SITE AND DESCRIPTION**  
BBA Dimension Stone Mining cc (the Proponent), intends to apply to obtain an Environmental Clearance Certificate proposed Dimension Stone mineral right on **Mining Gains 75066, 75067, 75068, 75163 and 75164** totalling an area of 89.4 Ha. The Mining claims are situated in the Karibib District of the Erongo Region. The key component of the proposed activity entails mining of Marble and continued exploration activities.

**2. PUBLIC PARTICIPATION PROCESS**  
Enviro-Leap Consulting invites all Interested and Affected Party (I & AP) to register in order to be included in the on-coming stakeholder engagement process. The due process will be communicated as soon as the I&APs database has been updated.

**3. COMMENTS AND QUERIES**  
Interested and Affected Parties are herewith request to register by writing to us at the address below no later than **20<sup>th</sup> February 2024**.

Please register and direct all comments, queries to:  
Mr. Shadrack Tjiramba, Environmental Assessment Practitioner  
Email: [eap.trigen@gmail.com](mailto:eap.trigen@gmail.com)

**ENVIROLEAP CONSULTING cc**  
P.O. Box 20784, Windhoek | +264 81 133 1844 | [eap.trigen@gmail.com](mailto:eap.trigen@gmail.com)





## Farmers Told to Keep Livestock Out of Town at Opuwo

 **Uakutura Kambaekua**

The Opuwo Town Council has issued a pressing warning to livestock owners, urging them to maintain proper fences and prevent animals from straying beyond the town's boundaries.

Opuwo continues to face challenges with an expanding animal population, posing unique challenges.

Recently, the Town Council discovered a significant number of animals, including goats, sheep, cattle, and pigs, being kept or farmed within the town's limits, with some brought in from neighbouring areas.

In an interview with The Villager, Opuwo Town Council's technical director, Karui Rikambura emphasised that the problem is becoming increasingly burdensome, hindering the town's development and restricting its expansion beyond the village level.

Rikambura attributed this dilemma to the ten-year drought affecting the region, compelling farmers to migrate to towns in search of greener pastures and water for their remaining cattle.

"Farmers sometimes bring their livestock for auction, and if they fail to find a buyer, they start keeping these animals in town instead of returning them to the villages. I must also add that drought is one of the factors contributing to this increase," he explained.

He emphasised that the Town Council would not be accountable for any missing, dead, ailing, or injured animals, nor for any damage to gardens or crops caused by these animals while detained by the council.

Rikambura said the town has also observed a recent surge in domesticated animals such as cats and dogs, along with a growing number of pigs, prompting Rikambura to caution farmers against constructing kraals within the town's boundaries.

He stressed that all livestock should be raised outside the town's borders.

Despite concerted efforts by the council, Rikambura acknowledged the practical challenges of keeping animals out of town, particularly in Opuwo and other Northern towns, which are located in common areas without proper fencing.

"Unlike other towns surrounded by commercial farms, most of our towns North of the border are in commercial areas, and it's very difficult to keep these animals away as they can roam freely," he said.

Rikambura expressed dissatisfaction with the town's substantial costs for detaining these animals, claiming that the penalty for confiscation is insufficient to cover the expenses incurred for their care.

He revealed that the council often loses thousands of dollars in keeping these animals, citing instances where the council spends at least N\$2000 per head of the animal for a set duration, only for the owner to pay less than N\$200 in detention costs.

According to the Pound Regulations under the Local Authorities Act, 1992, annex B, the violator's fee is N\$1.00 per animal per day or part of a day, except for sheep and goats, which are charged at N\$5.00 per sheep or goat per day or part of a day.

Grazing expenses for all animals except sheep and goats are N\$4.50 per animal per day or part of a day, and N\$2.30 per sheep or goat per day or part of a day.

Feeding charges for all animals except sheep and goats are N\$8.25 per animal per day or part of a day, while goats and sheep are charged at N\$2.50.

Rikambura urged farmers to brand their animals with traceable identity numbers and obtain movement clearance from veterinary authorities in the event of impoundment for identification purposes.

### CALL FOR REGISTRATION AS INTERESTED AND AFFECTED PARTIES ENVIRONMENTAL ASSESSMENT FOR THE PROPOSED BBA DIMENSION STONE MINING CC APPLICATION FOR ENVIRONMENTAL CLEARANCE IN RESPECT TO DIMENSION STONE MINING IN THE ERONGO REGION

#### 1. PROJECT SITE AND DESCRIPTION

BBA Dimension Stone Mining cc (the Proponent), intends to apply to obtain an Environmental Clearance Certificate proposed Dimension Stone mineral right on Mining Claims 75066, 75067, 75068, 75163 and 75164 totalling an area of 89.4 Ha. The Mining claims are situated in the Karibib District of the Erongo Region. The key component of the proposed activity entails mining of Marble and continued exploration activities.

#### 2. PUBLIC PARTICIPATION PROCESS

Enviro-Leap Consulting invites all Interested and Affected Party (I & AP) to register in order to be included in the on-coming stakeholder engagement process. The due process will be communicated as soon as the I&APs database has been updated.

#### 3. COMMENTS AND QUERIES

Interested and Affected Parties are herewith request to register by writing to us at the address below no later than **20<sup>th</sup> February 2024**.

Please register and direct all comments, queries to:  
Mr. Shadrack Tjiramba, Environmental Assessment Practitioner  
Email: [eap.trigen@gmail.com](mailto:eap.trigen@gmail.com)

 **ENVIROLEAP CONSULTING CC**  
...it leap towards better environmental compliance.  
Enviro Leap Consulting cc P. O. Box 15874, Windhoek +264 81 232 6843 [eap.trigen@gmail.com](mailto:eap.trigen@gmail.com)

CLASSIFIEDS

**ENVIRONMENTAL IMPACT ASSESSMENT (EIA) FOR THE PROPOSED SUBDIVISION, CLOSURE AND REZONING OF PUBLIC OPEN SPACES IN OKAHAO, OMUSATI REGION**

Notice is hereby given to all potential Interested and Affected Parties (I&APs) that an application for the Environmental Clearance Certificate will be submitted to the Environmental Commissioner in terms of the Environmental Management Act (Act No. 07 of 2007) for the following proposed activities.

- Permanent Closure of Erf 1336, Okahao Proper, as a "Public Open Space" and Rezoning to "Business"
- Subdivision of Erf 884, Okahao Extension 3, into Portion A, B & Remainder, Closure & Rezoning of Portion A & B from "Public Open Space" to "Business"
- Subdivision of Erf 1535, Okahao Extension 5 into Portion A, B, C & Remainder, Closure and Rezoning of Portion A & B from "Public Open Space" to "Business" and Portion C to "Street".

Location: Okahao, Omusati region  
 Proponent: PH Builders cc  
 EAP: Green Gain Environmental Consultants cc

In terms of the Environmental Management Act, 07 of 2007, the rezoning of the land zoned "Public Open Space" to any other land use may not be undertaken without an EIA being carried out. I&APs are hereby invited to register, request for Background Information Document (BID), and send their comments to [gia@greengain.com.na](mailto:gia@greengain.com.na) before 08 February 2024.

The need for a public meeting will be communicated to all registered I&APs.

**For more information**  
 +264811422927 or [jikondja@gmail.com](mailto:jikondja@gmail.com)



**ENVIRONMENTAL IMPACT ASSESSMENT (EIA) FOR THE PROPOSED SUBDIVISION OF ERF 7881 AND CREATION OF A PORTION OF A STREET, KUSEBMOND EXTENSION 10, WALVIS BAY, ERONGO REGION.**

Notice is hereby given to all potential Interested and Affected Parties (I&APs) that an application for the Environmental Clearance Certificate will be submitted to the Environmental Commissioner in terms of the Environmental Management Act (Act No.07 of 2007) for the following activities.

Proposed Activities: Subdivision of the Erf 7881, Kusebmond Extension 10 into 10 portions and Rezoning of 9 resulting portions from "General Residential" to "Single Residential" and Remainder as a "Street".

Location: Kusebmond Extension 10, Walvis Bay, Erongo Region  
 Proponent: Eco Engineering Services cc  
 EAP: Green Gain Environmental Consultants cc

I&APs are hereby invited to register, request for Background Information Document (BID), and send their comments to [gia@greengain.com.na](mailto:gia@greengain.com.na) on or before 13 February 2024.

The need for a public meeting will be communicated to all registered I&APs.

**For more information**  
 +264811422927 or [jikondja@gmail.com](mailto:jikondja@gmail.com)

**EnviroPlan Consulting cc**  
 ...innovative planning for sustainability

**Notice of Scoping and Environmental and Social Impact Assessment (ESIA) Process**

EnviroPlan Consulting cc hereby gives notice to all potential Interested and Affected Parties (I&APs), that an application for Environmental Clearance certificate will be made to the Environmental Commissioner in terms of the Environmental Management Act (No. 7 of 2007) as follows:

**Project:** Environmental and Social Impact Assessment (ESIA) for proposed Sacred Heart Mother and Child Hospital, Khomas Region, Namibia.  
**Proponent:** Sacred Heart Mother and Child Hospital (PVT) LTD  
**Environmental Assessment Practitioner:** EnviroPlan Consulting cc.  
**Project Location and Description:** -22°32'33.6" S 17°05'16.5" E

A proposal to establish a new private hospital for women and children on ERF 6225 and ERF 6226 in Eros, Windhoek. The development is proposed on a consolidated vacant site which is flanked on the Eastern side by Heliodor Street (The main Road linking both Omuramba and Eros road to the Eros Mediclinic and a quieter road side Nossob Street.

**Public participation process:** Interested and Affected Parties (I&APs) are hereby notified of the on-going public participation process. Public meeting will be conducted as follows:  
**Date:** 03/02/24 **Venue:** ERF 6226 Eros, Windhoek.

The participation and commenting period extend until 14 February 2024.  
 To register or request for documents submit your details in writing to the Environmental Consultant and contact details given:

**EnviroPlan Consulting cc**  
**EAP: Mr T.E Kasinganeti**  
**Phone: +264813634904/ +264814087482**  
**Email: [tental@enviroplanconsult.com](mailto:tental@enviroplanconsult.com)**  
**[talent@enviroplanconsult.com](mailto:talent@enviroplanconsult.com)**

**EnviroPlan Consulting cc**  
 ...innovative planning for sustainability

**Notice of Scoping and Environmental and Social Impact Assessment (ESIA) Process**

EnviroPlan Consulting cc hereby gives notice to all potential Interested and Affected Parties (I&APs), that an application for Environmental Clearance certificate will be made to the Environmental Commissioner in terms of the Environmental Management Act (No. 7 of 2007) as follows;

**Project:** Environmental Impact Assessment (EIA) for Mining Claims (MCs) number 74555, 74556, 74557, 74558, 74559, 74560, 74561, 74562, 74563 and 74564 Usakos, Erongo Region, Namibia.  
**Proponent:** Pepezone Investment  
**Environmental Assessment Practitioner:** EnviroPlan Consulting cc.  
**Project Location and Description:** -22°06'22.5, 15°32'51"E

The MCs are located approximately 10 km South west of Usakos. They are registered as Pepezone Mining Claims with the Ministry of Mines and Energy.

**Public participation process:** Interested and Affected Parties (I&APs) are hereby notified of the on-going public participation process. Public meeting will be conducted as follows:  
**Date:** 02/02/24 **Venue:** Proposed site

The participation and commenting period extend until 7 February 2024.  
 To register or request for documents submit your details in writing to the Environmental Consultant and contact details given:

**EnviroPlan Consulting cc**  
**EAP: Mr T.E. Kasinganeti**  
**Phone: +264813634904/ +264814087482**  
**Email: [tental@enviroplanconsult.com](mailto:tental@enviroplanconsult.com)**  
**[talent@enviroplanconsult.com](mailto:talent@enviroplanconsult.com)**

**CALL FOR REGISTRATION AS INTERESTED AND AFFECTED PARTIES ENVIRONMENTAL ASSESSMENT FOR THE PROPOSED BBA DIMENSION STONE MINING CC APPLICATION FOR ENVIRONMENTAL CLEARANCE IN RESPECT TO DIMENSION STONE MINING IN THE ERONGO REGION**

**1. PROJECT SITE AND DESCRIPTION**

BBA Dimension Stone Mining cc (the Proponent), intends to apply to obtain an Environmental Clearance Certificate proposed Dimension Stone mineral right on Mining Claims 75066, 75067, 75068, 75163 and 75164 totalling an area of 89.4 Ha. The Mining claims are situated in the Karibib District of the Erongo Region. The key component of the proposed activity entails mining of Marble and continued exploration activities.

**2. PUBLIC PARTICIPATION PROCESS**

Enviro-Leap Consulting invites all Interested and Affected Party (I & AP) to register in order to be included in the on-coming stakeholder engagement process. The due process will be communicated as soon as the I&APs database has been updated.

**3. COMMENTS AND QUERIES**

Interested and Affected Parties are herewith request to register by writing to us at the address below no later than 20<sup>th</sup> February 2024.

Please register and direct all comments, queries to:  
 Mr. Shadrack Tjiramba, Environmental Assessment Practitioner  
 Email: [e.ap.trigen@gmail.com](mailto:e.ap.trigen@gmail.com)



**ENVIROLEAP CONSULTING cc**  
 ...innovative planning for sustainability  
 P.O. Box 9576, Windhoek | +264 81 292 9843 | [esp.trigen@gmail.com](mailto:esp.trigen@gmail.com)

**NAMIB CONSULTING**

**NOTICE OF ENVIRONMENTAL IMPACT ASSESSMENT**

Namib Consulting Services CC hereby give notice to all Interested and Affected Parties (I&APs) that an application will be submitted to the Environmental Commissioner in terms of the Environmental Management Act (No. 7 of 2007) and Regulations (GN 29 of 2012) for the following proposed project:

**Project Name:** The proposed anchorage and camping site development at Kanywanzenzi Island.  
**Project Location:** Kasika, Kabbe South Constituency, Zambezi Region.

**Project Descriptions:** The proponent intends to utilise the island shore for mooring of houseboats and erect structures on the land for limited camping during the dry season of the year.

**Proponent:** Mr. Ernest Sikanda  
**Environmental Assessment Practitioner:** Namib Consulting Services CC.

**Public Meeting:** Date: 08 February 2024  
 Time: 09h00  
 Venue: Kasika Conservancy Office

**Registration as I&APs:** To obtain a prepared background information document (BID), submit comments or concerns, or register as I&APs, please send details to the following details.

**Contact:** 085 694 9740 or 081 291 0649  
**Email:** [namibconsulting@gmail.com](mailto:namibconsulting@gmail.com)

**Closing Date for submission of comments:** before or on the 9<sup>th</sup> of February 2024



## LIFESTYLE

# Practical advice to help prevent mental health struggles in the workspace

VUYILE MADWANTSI

**I**magine nearly four in 10 people around you facing a mental health challenge.

That's the reality in South Africa, according to "The Mental State of the World in 2022" report.

With a new year ahead of us Dr Marion Borcherds from AfroCentric (part of the Sanlam family) reminds us that being mentally healthy is just as important as being physically fit, especially at work.

"We've got to get comfortable talking about mental health in our jobs," said Borcherds.

She has noticed that young people especially kept quiet about how they were feeling because they were scared of being judged or being seen as not good enough.

And with two-thirds of young South Africans not seeking help for mental health issues, as a Unicef U-Report poll highlights, something needs to change.

In a concerning revelation from the American Psychological Association's (APA) 2023 Work in America Survey, it has been reported that over one-fifth of workers suffer mental health harm due to toxic work environments.

The survey says 22% of employees find themselves in harmful conditions at work that directly affect their mental well-being. This issue appears to be more prominent in certain job roles, with customer service workers facing the brunt of the problem.

Customer service employees are seeing verbal abuse rates at 31%, which is notably higher compared to the 23% and 22% reported by manual labourers and office workers, respectively, the APA survey highlighted.

Physical violence is also a worrying occurrence, with manual labourers experiencing higher instances at 12%. This is in stark contrast to the 5% of office workers and 6% of customer service staff who face similar situations.

Discrimination and derogatory actions pose another serious concern. The findings show that 22% of workers observe discriminatory behaviours in their workplace, and 15% are victims themselves.

Furthermore, 28% have seen unpleasant remarks or jokes made about someone's identity, and 19% have been subjected to such behaviour.

Alarmingly, those stuck in toxic workplaces are three times more likely to experience mental health damage when compared to their counterparts in positive work environments.

With 19% of workers labelling their workplace as toxic, the urgency for change is clear.

Since many of us spend a lot of our day at work, Borcherds says companies must let people talk about their mental health and support them.

The shift towards a supportive work environment is not just a fleeting trend; it's a clear demand from the workforce.

The average employee spends a substantial portion of their life at work. It's no surprise that the work environment plays a pivotal role in employee mental and emotional well-being.

According to The Mental State of the World in 2022 report, 35.8% of the South African population is facing mental health issues.

A Wellable article reports that the APA's recent findings underscore



the gravity of the issue, revealing alarming statistics that shed light on the prevalence and consequences of workplace toxicity.

From interpersonal dynamics to managerial practices, a toxic workplace can erode organisational culture, hamper employee satisfaction, and contribute to higher turnover rates. Borcherds offers pointers on how to change the work environment:

#### Make it normal to talk about mental health

Just like you'd talk about a project at work, we should be able to talk about mental well-being too. With more people feeling stressed or anxious after the pandemic, Borcherds believes workplace wellness programmes are key. "Employees should have a say in what these programmes offer."

#### Teach and learn together

There's a lot of things most people don't know about mental health. Borcherds encourages businesses to learn and then teach their teams about mental health issues, treatments and ways to cope. Knowing more can take away some of the fear and help everyone feel safe.

#### Mind your words

The words we use can affect how people feel. "Think before you speak to avoid hurting someone who's already struggling," Borcherds added.

#### It's brave to ask for help

If you're going through a tough time, it's more than okay to get support, and workplaces should offer help like counselling or someone to talk to. "Reaching out shows strength."

#### Get the full support package

The Sanlam Umbrella Fund has started giving free sessions with psychologists to help members deal with stress and other mental health issues.

This step, as Nzwananani Shoniwa from Sanlam Corporate puts it, helps the workers and the company by reducing the number of days people take off because of stress.

#### Share your story

If you're okay with it, open up to your co-workers about your mental health experience. Doing this can make everyone feel more connected and remind them they're not alone.

"To really tackle mental health stigma in the workplace, we all need to chip in and support one another. Let's break down these barriers together," said Borcherds.

#### CALL FOR REGISTRATION AS INTERESTED AND AFFECTED PARTIES

#### ENVIRONMENTAL ASSESSMENT FOR THE PROPOSED BBA DIMENSION STONE MINING CC APPLICATION FOR ENVIRONMENTAL CLEARANCE IN RESPECT TO DIMENSION STONE MINING IN THE ERONGO REGION

##### 1. PROJECT SITE AND DESCRIPTION

BBA Dimension Stone Mining cc (the Proponent), intends to apply to obtain an Environmental Clearance Certificate proposed Dimension Stone mineral right on Mining Claims 75066, 75067, 75068, 75163 and 75164 totalling an area of 89.4 Ha. The Mining claims are situated in the Karibib District of the Erongo Region. The key component of the proposed activity entails mining of Marble and continued exploration activities.

##### 2. PUBLIC PARTICIPATION PROCESS

Enviro-Leap Consulting invites all interested and Affected Party (I & AP) to register in order to be included in the on-going stakeholder engagement process. The due process will be communicated as soon as the I&APs database has been updated.

##### 3. COMMENTS AND QUERIES

Interested and Affected Parties are herewith request to register by writing to us at the address below no later than **20<sup>th</sup> February 2024**.

Please register and direct all comments, queries to:  
Mr. Shadrack Tjiramba, Environmental Assessment Practitioner  
Email: [exp.trigen@gmail.com](mailto:exp.trigen@gmail.com)

**ENVIROLEAP CONSULTING cc**  
...a leap towards better environmental justice.  
Enviro Leap Consulting cc, P. O. Box 25824, Windhoek, +264 (0) 23 16443, [exp.trigen@gmail.com](mailto:exp.trigen@gmail.com)





REPUBLIC OF NAMIBIA

**MINISTRY OF MINES AND ENERGY**  
**Office of the Mining Commissioner**

Tel: +264 61 284-8276/77  
Fax: +264 61 284-8299  
E-mail: [info@mme.gov.na](mailto:info@mme.gov.na)  
Website: [www.mme.gov.na](http://www.mme.gov.na)

1 Aviation Road  
Private Bag 13297  
WINDHOEK

**CERTIFICATE OF REGISTRATION OF MINING CLAIMS**

(Registered and issued in terms of Section 36(1)(a) and (c) of the Minerals  
(Prospecting and Mining) Act 1992, (Act 33 of 1992) ("the Act"))

Reference N70o.	14/2/2/1/2/8126
Registered holder	BBA DIMENSION STONE MINING CLOSE CORPORATION
Address	ERF 3136, CAMELTHORN ESTATES, OKAHANDJA
Postal Address	PO BOX 868, OKAHANDJA
Cell Number	081 358 8650
Email Address	bf788864@gmail.com

**PARTICULARS OF MINING CLAIMS:**

Ordinal No.	Registered No.	Date Pegged	Group of Minerals
1	70627	16 MARCH 2018	SEMI PRECIOUS STONES
2	70628	16 MARCH 2018	SEMI PRECIOUS STONES
3	70629	16 MARCH 2018	SEMI PRECIOUS STONES

The mining claims are valid from **14 MAY 2019** until **13 MAY 2022**

An application for the renewal of the registration of the above mining claims is, in terms of section 38(2) of the Act, required to be made not less than 90 days before the expiry date.

**PARTICULARS OF FARM:**

Name	No.	Owner	Magisterial District	Region
STATELAND	-	GOVERNMENT OF THE REPUBLIC OF NAMIBIA	KARIBIB	ERONGO



Registered and issued at Windhoek this 14<sup>th</sup> day of MAY 2019



**MR EI SHIVOLO**  
**MINING COMMISSIONER**



**General terms and conditions of the registration of mining claims:**

The holder of a mining claim shall –

- Exercise his rights under the mining claim reasonably and in such manner that the rights and interests of the land owner are not adversely affected, except to the extent to which such owner is compensated (Section 41(1)(a));
  - Submit to the Mining Commissioner a copy of the written compensation agreement entered into with the land owner (Section 52(1)(a)(i));
  - Not exercise his rights under the mining claim until a written compensation agreement is in place or such mining claim holder has been granted an ancillary right to exercise such rights on such land (Section 52(1)(a)(i));
  - Carry on prospecting or mining operations in the claim area in accordance with good prospecting- or mining practices (Section 41(1)(b));
  - Maintain all beacons in a decent and legible condition at all times (Section 41(1)(c));
  - Take all reasonable steps to secure the safety, welfare and health of all employees and prevent or minimize any pollution to the environment (Section 41(1)(e));
  - Apply to the Mining Commissioner for an accessory works permit before any such accessory works are erected (Section 31(3)(a));
  - Maintain in good condition and repair all accessory works in such claim area (if any) (Section 41(1)(f));
  - Remove from the claim area all structures, equipment and other goods not used or intended to be used (Section 41(1)(g));
  - Take reasonable steps to warn persons who may be in the vicinity of any accessory works of possible hazards (Section 41(1)(h));
  - In the case of company –
    - Give written notice to the Mining Commissioner of any change of such company (e.g. name, address, directors, share holding, etc.) within 30 days as from such change (Section 41(1)(j));
  - In the case of a natural person –
    - Give written notice to the Mining Commissioner of any change of such natural person (e.g. name, surname, address, etc.) within 30 days as from such change (Section 41(1)(k));
  - Keep at an address in Namibia, and such address shall be registered with the Mining Commissioner, a proper record in relation to any –
    - Prospecting operations (Section 45(1)(a)(ii)), and
    - Mining operations (Section 45(1)(a)(i)),
- For a period of not less than 3 years.
- Submit monthly returns/reports within 15 days after the end of each month to the Mining Commissioner (Section 45(1)(d));
  - Submit annual returns/reports within 60 days after 31 December of each year to the Mining Commissioner (Section 45(1)(e));
  - Pay annual mining claim fees before or on the anniversary date of the date of registration of the mining claim (Section 123(1)).

**It shall be generally accepted that the holder of a mining claim is acquainted with the provisions of the Minerals (Prospecting and Mining) Act, No. 33 of 1992.**

# RESUME OF EAP

...a Leap towards better environmental compliance.

## PROFESSIONAL PROFILE

**Mr. SHADRACK TJIRAMBA**  
Research and Environmental Management Specialist

ID Number : 80011910445      EMAIL: [eap.trigen@gmail.com](mailto:eap.trigen@gmail.com)  
Country of Residence : Namibia      Cell: +264-816229933  
Nationality: Namibian

## PROFESSIONAL OVERVIEW

Experience Internationally:  
Countries worked: Namibia, South Africa.

Languages: English (*fluently written, spoken and read*);  
Otjiherero (*fluently spoken, written and read*)  
Afrikaans (*well spoken, fairly written and read*),

## ACADEMIC QUALIFICATIONS:

2009	The University of Cape	Western Cape	Post-Graduate Diploma Sustainable Land Management (NQA Level 8) Sustainable Development, Resource Economics, 2009), South Africa
2007	University of South Africa (UNISA)		Bachelor of Laws (LLB)
2005	Polytechnic of Namibia		B-Tech Land Management, 2005

## EMPLOYMENT RECORD:

May 2020-Current: Enviro-Leap Consulting Cc  
Position: Lead Consultant Environmental Management

- Compile and review environmental assessment reports (environmental scoping and management plans (EMP)) for our clients in accordance with the requirements of the Environmental Management Act, No.7 of 2007 and its regulations of 2012
- Compile and review environmental policies and audits
- Reviewed and updated the Solid Waste Management Policy for Dundee Metals Mining
- Conduct environmental compliance inspections and audits
- Facilitate stakeholder engagement
- Coordinate closure and rehabilitation of development projects, such as mining sites, hazardous substance spill sites
- Prepared training manuals and facilitated workshops for Communal Land Boards

August 2015 – July 2018 (fixed-term 3 years)

Position: Project Coordinator-Basket Fund, GIZ (Deutsche Gesellschaft Fur Internationale) Responsibilities:

- Coordinate project activities in the Omaheke and Otjozondjupa Region's
- Provide technical expertise/advise to various regional councils, land boards, traditional authorities, local level planning committees
- Coordinate the processes of revising and developing the Namibian environmental legislations (plans, strategies, regulations and Act amendments), as well as dissemination of information on these tools
- Prepare tender documents
- Coordinate project procurement needs in line with GIZ procurement policies.
- Financial reporting in line with financial guidelines for grant agreement GIZ
- Coordinate, manage the planning and implementation of project consultants' key performance areas.
- Supervise project staff and resource allocation
- Reporting in line with donor requirements

 O. Box 25874, Windhoek     +264 81 622 9933     [eap.trigen@gmail.com](mailto:eap.trigen@gmail.com)



January 2019 – June 2019

Position: Social Policy Consultant – Gender Mainstreaming: Benguela Convention Commission. Responsibilities:

- Conducted and compiled a draft Situation Analysis Report, summarizing the findings of desk review, gender survey through the field mission and interviews
- Compiled a draft Action Plan for BCLME III Project and Gender Policy for BCC
- Hosted and facilitated a situation analysis findings validation workshop
- Produced final Situation Analysis Report, Gender Action Plan for BCLME III Project, including a proposed gender-responsive Project Results Framework with gender-responsible outputs, sex- disaggregated indicators, baseline and targets. Gender Policy for BCC

August 2011 to Dec 2012

Project Coordinator-MCA Agriculture & Environment:

- Managed the Millennium Challenge Accounts Namibia Agriculture and Environment project's activities.
- Co-Developed, implemented and monitored local-level integrated activities and annual work plans for the CBNRM.
- Undertook and provided training and technical support to the targeted conservancies as per the objectives of the CBNRM
- Ensured project compliance with donor requirements through production of and submission of technical reports according to Donor procedures trainings for land management for farmers

February 2004 – March 2009

Researcher: Land, Environment and Development Project-Legal Assistance Centre. June 2006 – November 2009

- Assist with desktop and field research on land, environmental and urban housing (informal settlements).
- Assist in the compilation of research questionnaires
- Conduct interviews
- Assist with project administration
- Liaise with stakeholders NGO's, Government Agencies, Farmer's Associations, Ministry of Environment
- Draft research reports

#### CERTIFICATION

I, the undersigned, Shadrack Tjiramba, hereby certify to the best of my knowledge that the information provided herein correctly describe me, my qualifications and experience.

Date: 26 September 2022

Signature: 



P. O. Box 25874, Windhoek



+264 81 6229933:



Email [eap.trigen@gmail.com](mailto:eap.trigen@gmail.com)