

1.1 PROJECT LOCATION

The proponent intends to mine industrial minerals (aggreagte) as a construction raw material on the mining claims 70108, 70109 & 70110 situated at Uundundu waNandjila Village near Omakange, Omusati Region, Namibia. The mining claims are situated at Uundundu waNandjila Village about 30 km north-east of Omakange, Omusati Region. The mining claims are accessible via a track which branch out for about 3 km toward the north when using the C41 main road from Omakange to litananga Village. Refer to the locality maps in **Figure 1, Figure 2, Figure 3 and Figure 4** for the locality of the 3 mining claims for the industrial minerals. (GPS Coordinates: -18.061111, 14.407222)



MINING CLAIM AREAS

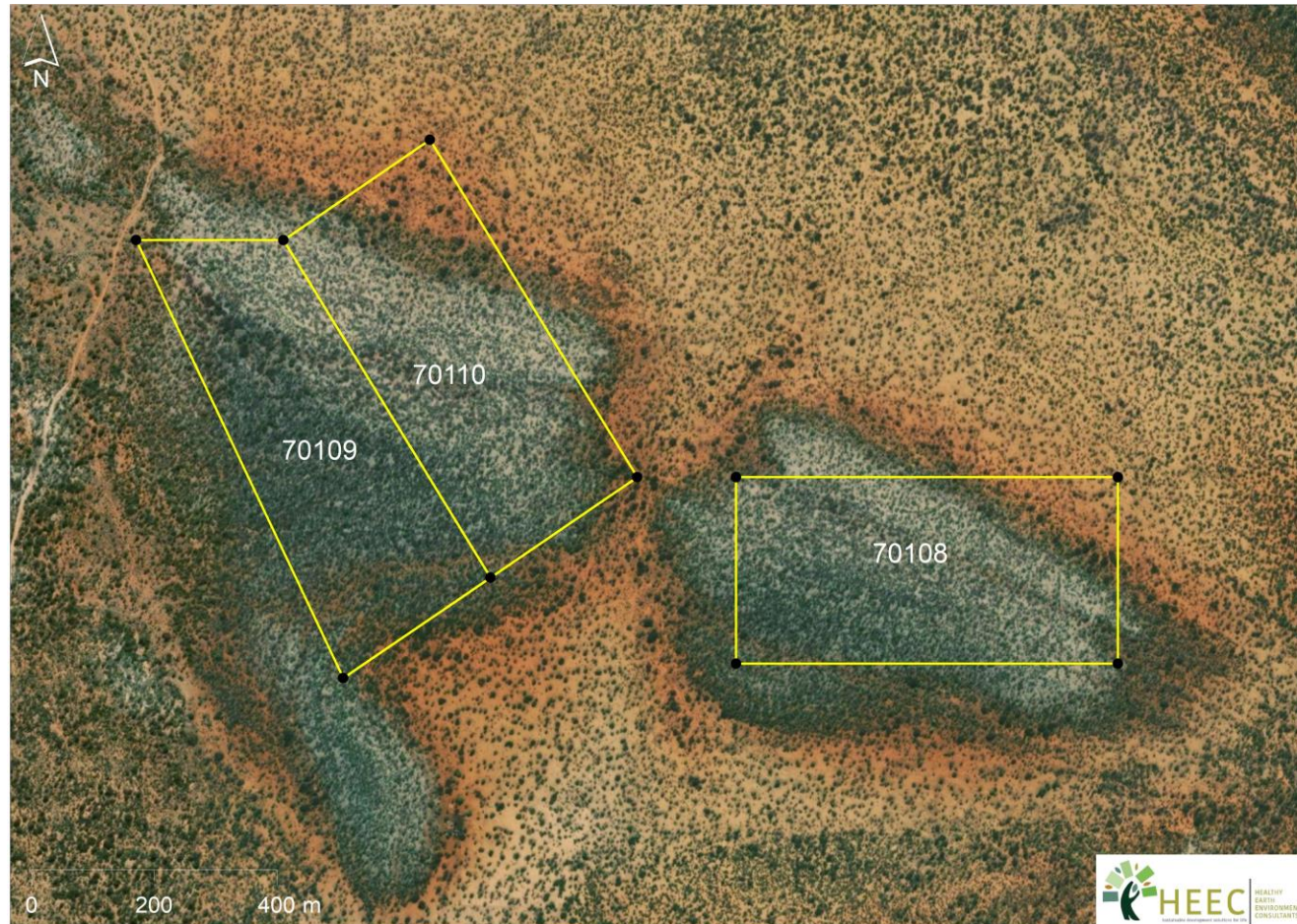


Figure 1: Locality map of the 3 mining claims 70108, 70109, 70110 at Uundundu waNandjila Village, Omusati Region (HEEC, 2021).



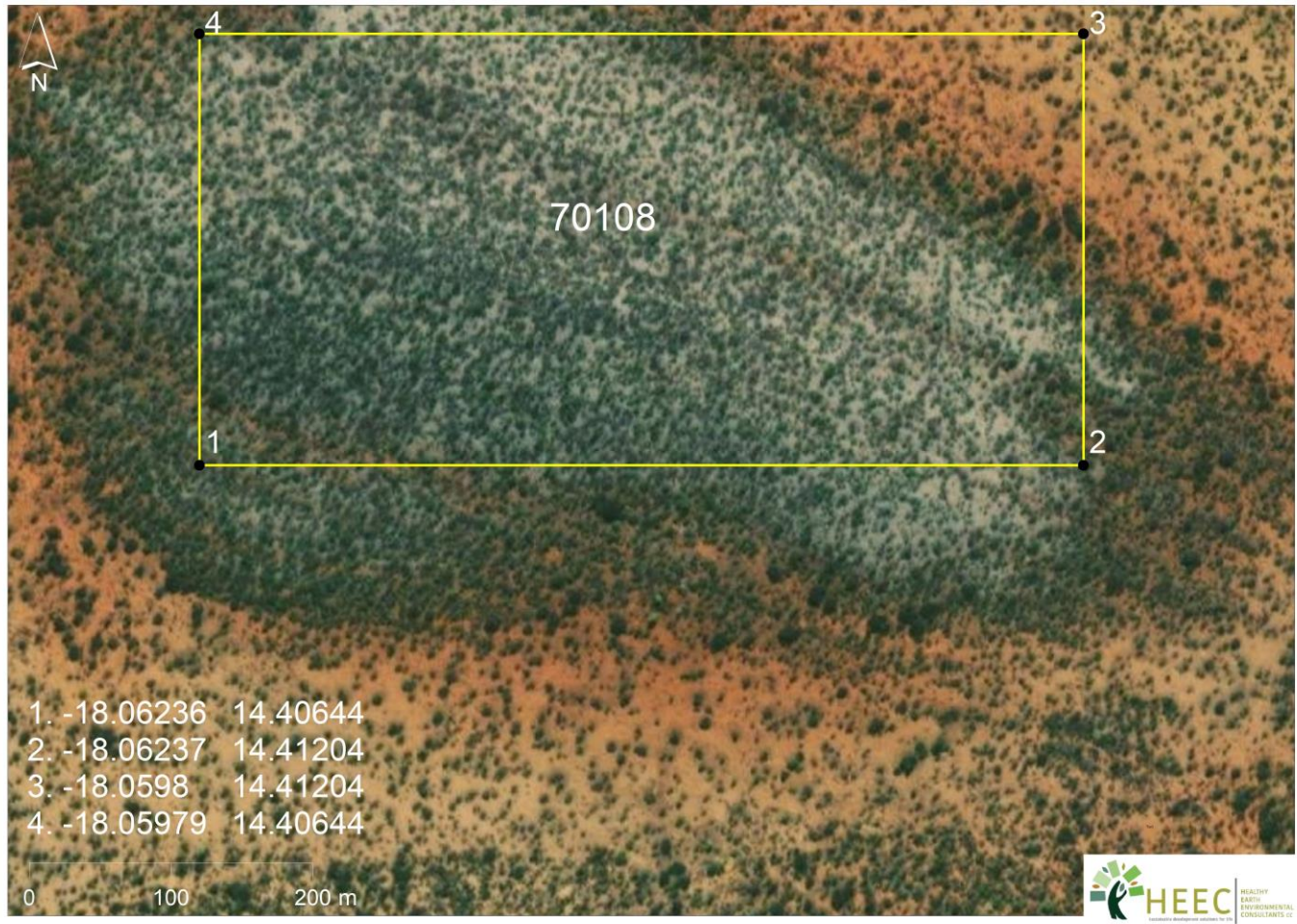


Figure 2: Locality map of mining claim 70108 at Uundundu waNandjila Village, Omusati Region (HEEC, 2021).

Location of the mining claims at Uundundu waNandjila Village near Omakange, Omusati Region, Namibia



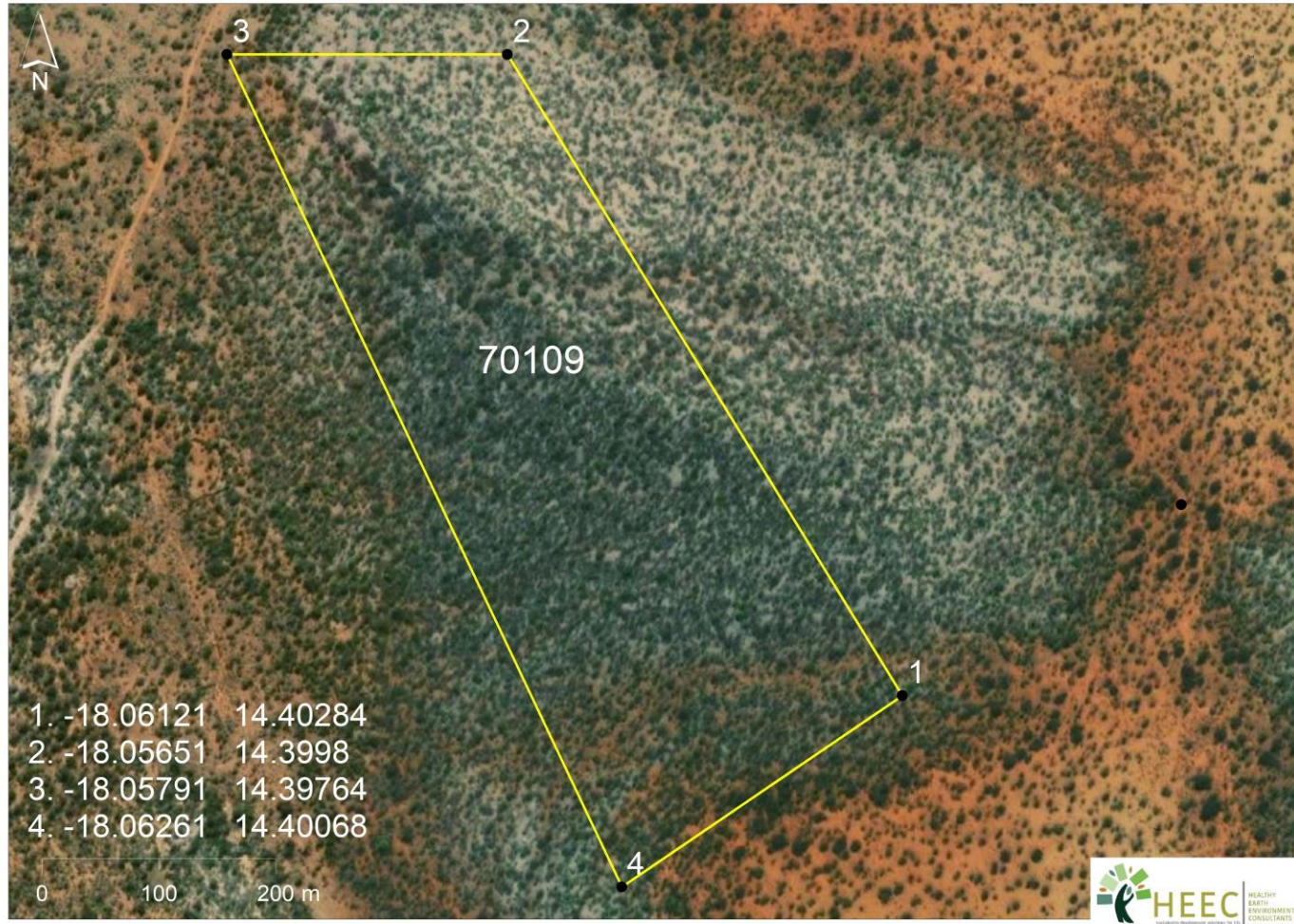


Figure 3: Locality map of mining claim 70109 at Uundundu waNandjila Village, Omusati Region (HEEC, 2021).



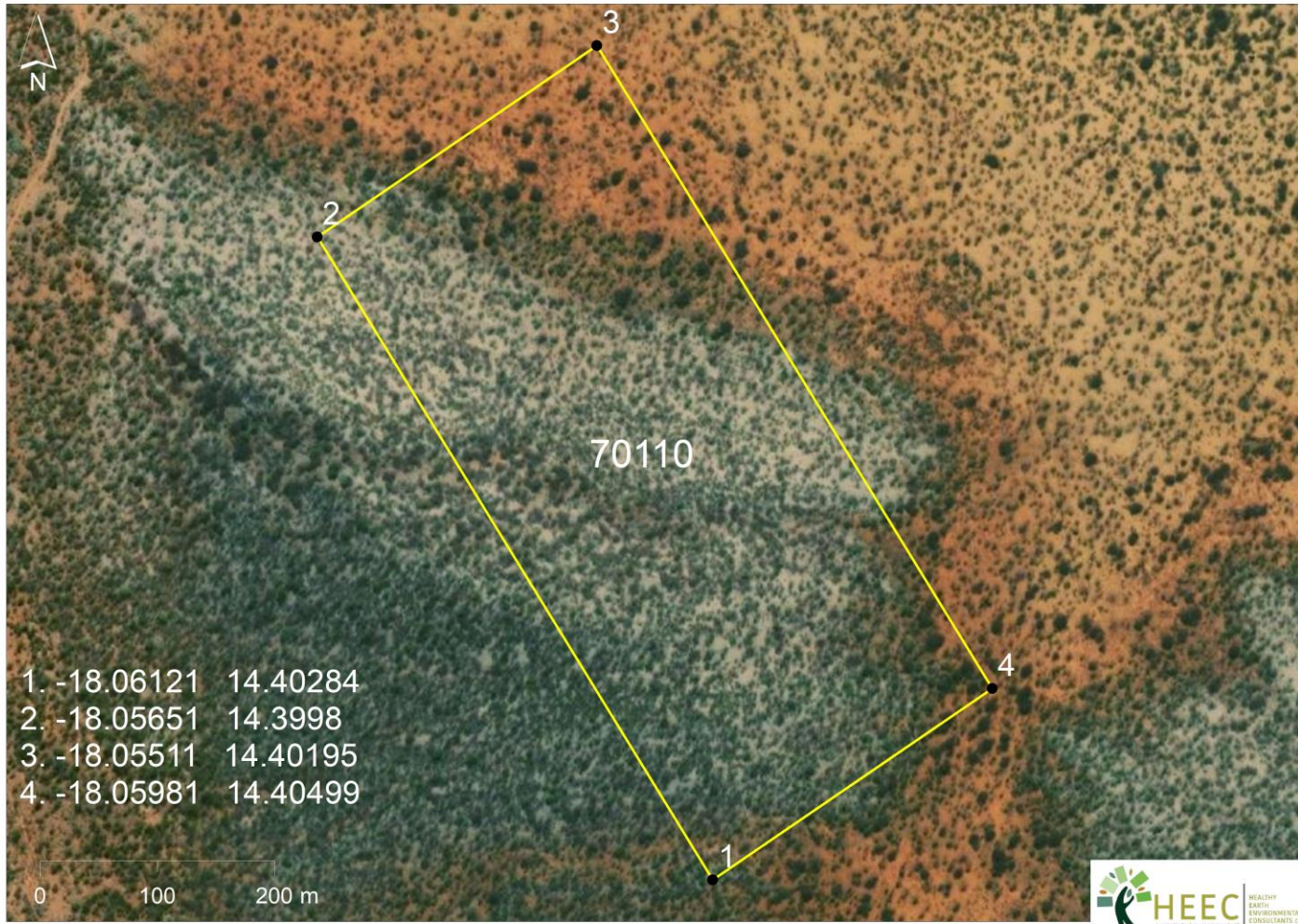


Figure 4: Locality map of mining claim 70110 at Uundundu waNandjila Village, Omusati Region (HEEC, 2021).



